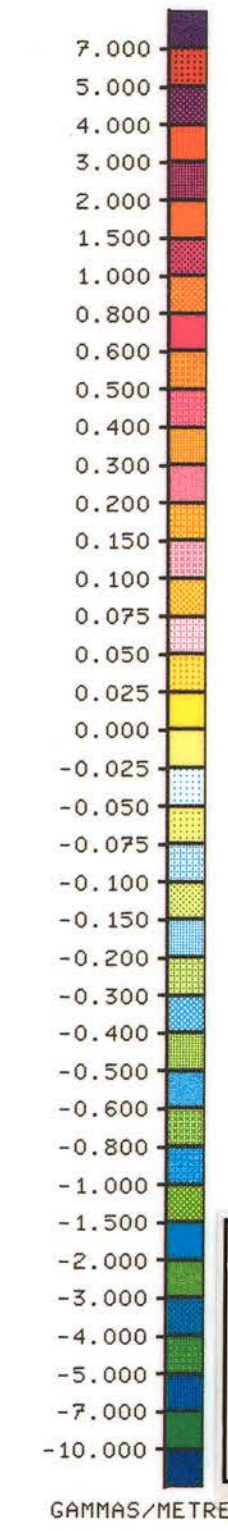


LYNN LAKE MAN.
VERTICAL GRADIENT
SCALE 1:50000

COMPILED BY:
GEOPHYSICAL DATA PROCESSING SECTION
REGIONAL GEOPHYSICS SUBDIVISION
RESOURCE GEOPHYSICS AND GEOCHEMISTRY DIVISION
GEOLOGICAL SURVEY OF CANADA
DEPARTMENT OF ENERGY, MINES AND RESOURCES



OPEN FILE
DOSSIER PUBLIC
936
1983
GEOLOGICAL SURVEY
COMMISSION GÉOLOGIQUE
OTTAWA

LYNN LAKE MAN.
VERTICAL GRADIENT
SCALE 1:50000

COMPILED BY:
GEOPHYSICAL DATA PROCESSING SECTION
REGIONAL GEOPHYSICS SUBDIVISION
RESOURCE GEOPHYSICS AND GEOCHEMISTRY DIVISION
GEOLOGICAL SURVEY OF CANADA
DEPARTMENT OF ENERGY, MINES AND RESOURCES