

LEGEND

- CENOZOIC**
- TERTIARY**
- PASKAPOO FORMATION: light grey sandstone, grey, in part carbonaceous, shale; small amounts of siliceous limestone and volcanic dust; coal seams
- CRETACEOUS**
- UPPER CRETACEOUS**
- EDMONTON FORMATION: grey bentonitic sand and sandstone, grey and greenish shale; coal seams
- BEARPAW FORMATION: grey shale in part bentonitic, brown and green sand
- PALE AND VARIEGATED BEDS: light grey, bentonitic sand, grey, yellowish and dark carbonaceous shale; thin coal seams
- MESOZOIC**
- BIRCH LAKE FORMATION: brownish and yellowish weathering sand and sandstone, thin-bedded sand and shale; discontinuous oyster bed at base
- GRIZZLY BEAR FORMATION: dark grey shale, thin sand beds; lower part bentonitic
- RIBSTONE CREEK FORMATION: grey and greenish sand and sandstone, shale and sandy shale; thin coal seams and carbonaceous shale
- LEA PARK FORMATION: dark grey shale; one thick sand bed in Ribstone area

NOTE: Only those formations that occur in this map-area are patterned in the legend. The other formations occur elsewhere in east-central Alberta.

- Geological boundary (approximate) .....- - - - -
- Rock outcrop .....x
- Bore-hole for oil and gas .....o
- Coal mine .....o

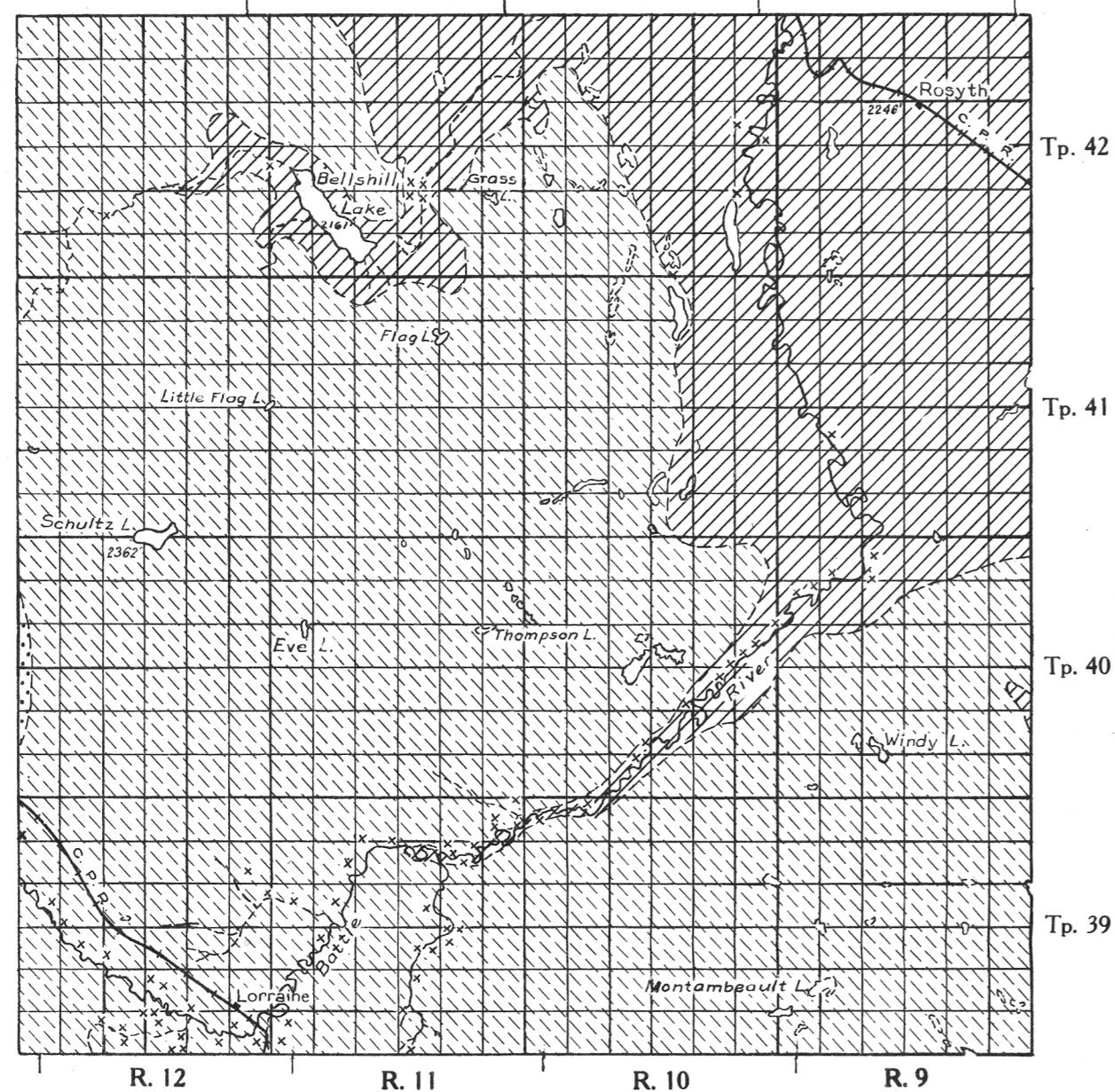


FIGURE 1. MAP SHOWING BEDROCK GEOLOGY

LEGEND

- In Drift
- In Bedrock
- WELL, CLASS 1: Flowing wells
- In Drift
- In Bedrock
- WELL, CLASS 2: Wells in which the water is under pressure but does not rise to the surface
- In Drift
- In Bedrock
- WELL, CLASS 3: Wells in which the water does not rise above the water-table
- In Drift
- In Bedrock
- DRY HOLES
- In Drift
- In Bedrock
- SPRING

NOTE: The above symbols apply to a larger region in east-central Alberta, and may not all appear within the limits of this area

- Forest Reserve boundary .....- - - - -
- Indian Reserve boundary .....- - - - -
- Height in feet above mean sea level .....2000'
- Contours, interval 50 feet .....2000'

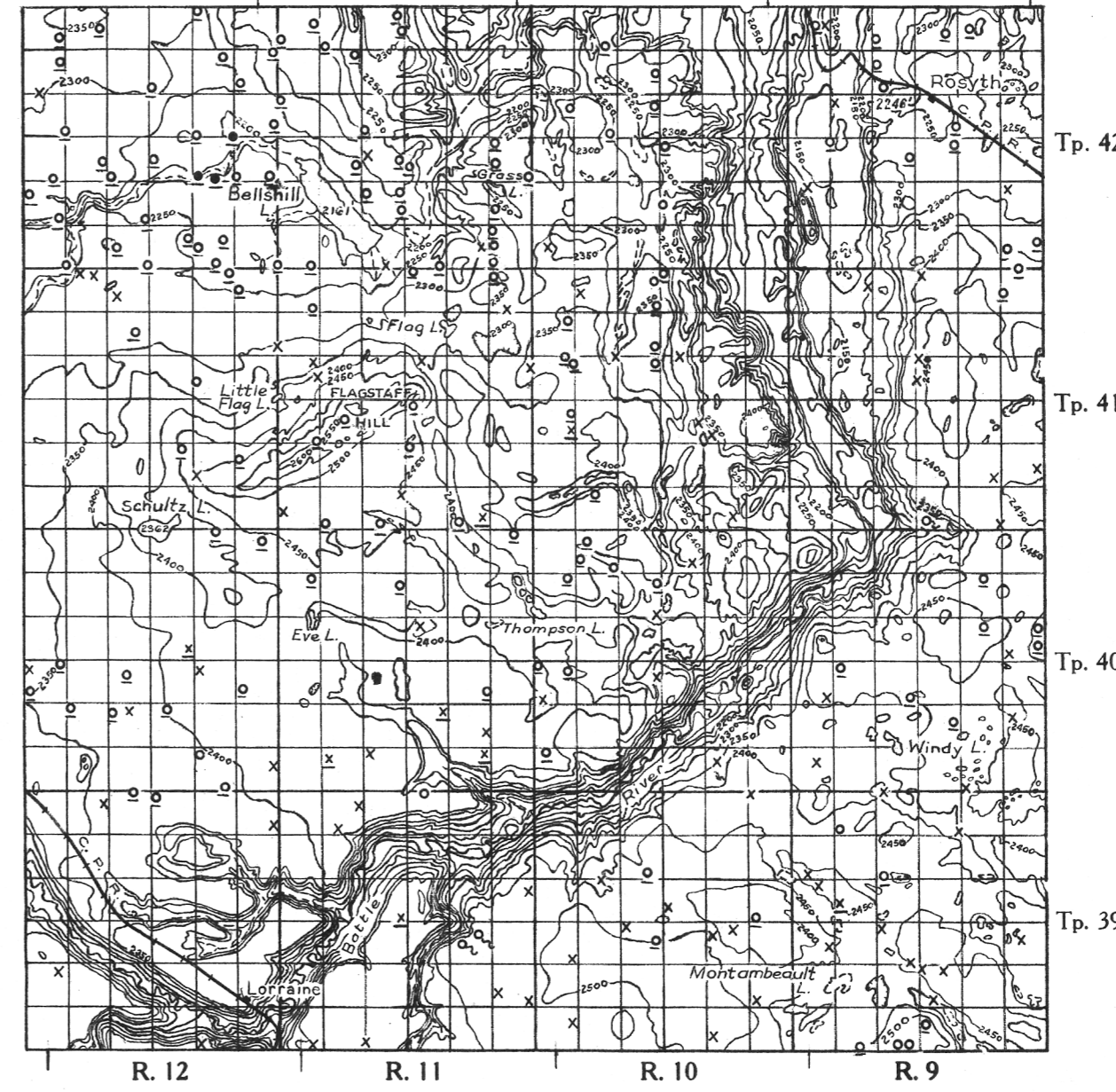


FIGURE 2. MAP SHOWING TOPOGRAPHY AND THE LOCATION AND TYPES OF WELLS

TO ACCOMPANY WATER SUPPLY PAPER 270

**TOWNSHIPS 39-42, RANGES 9-12**  
**WEST OF FOURTH MERIDIAN**  
**ALBERTA**

Scale:- 1 inch to 4 miles

