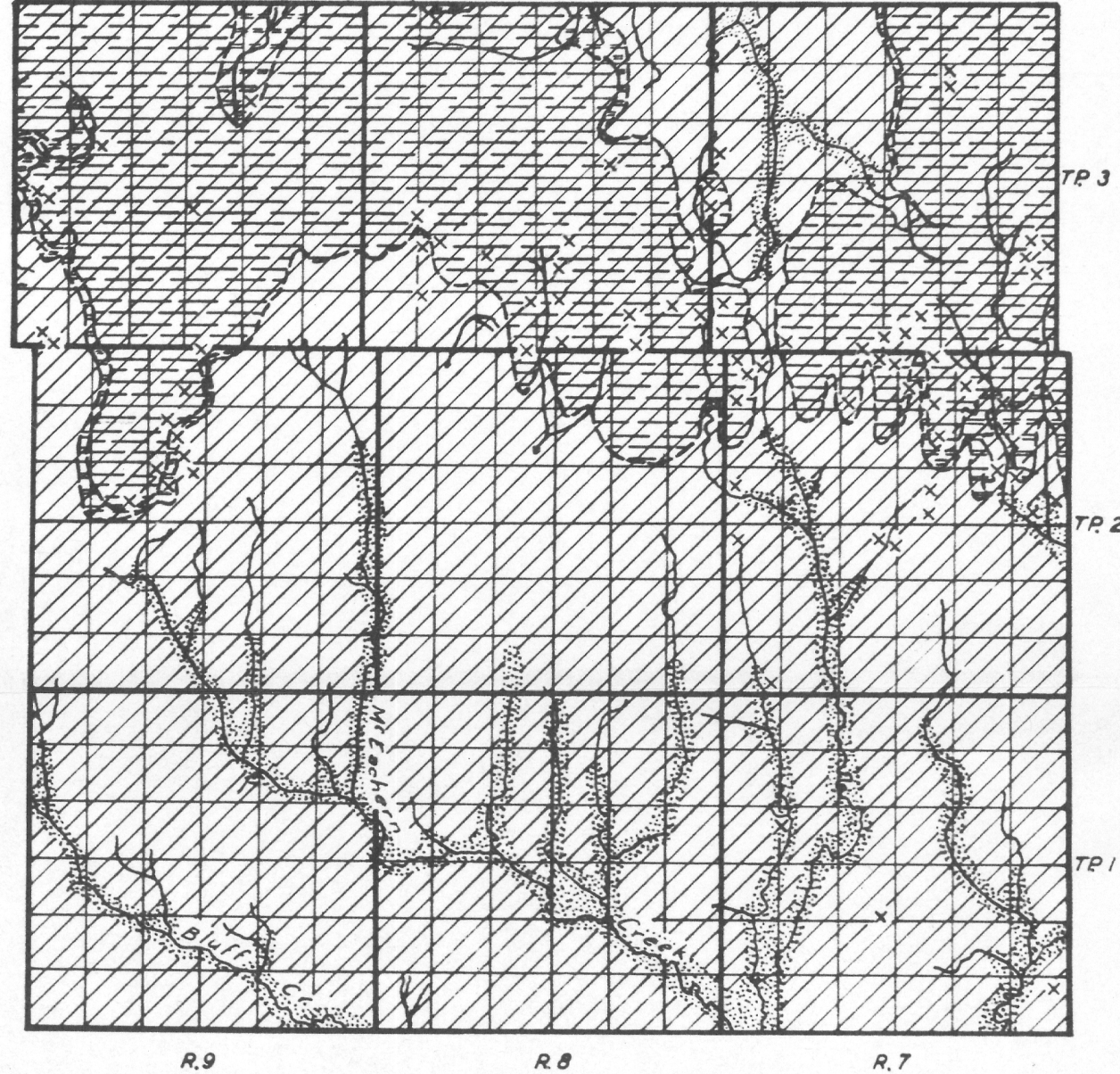


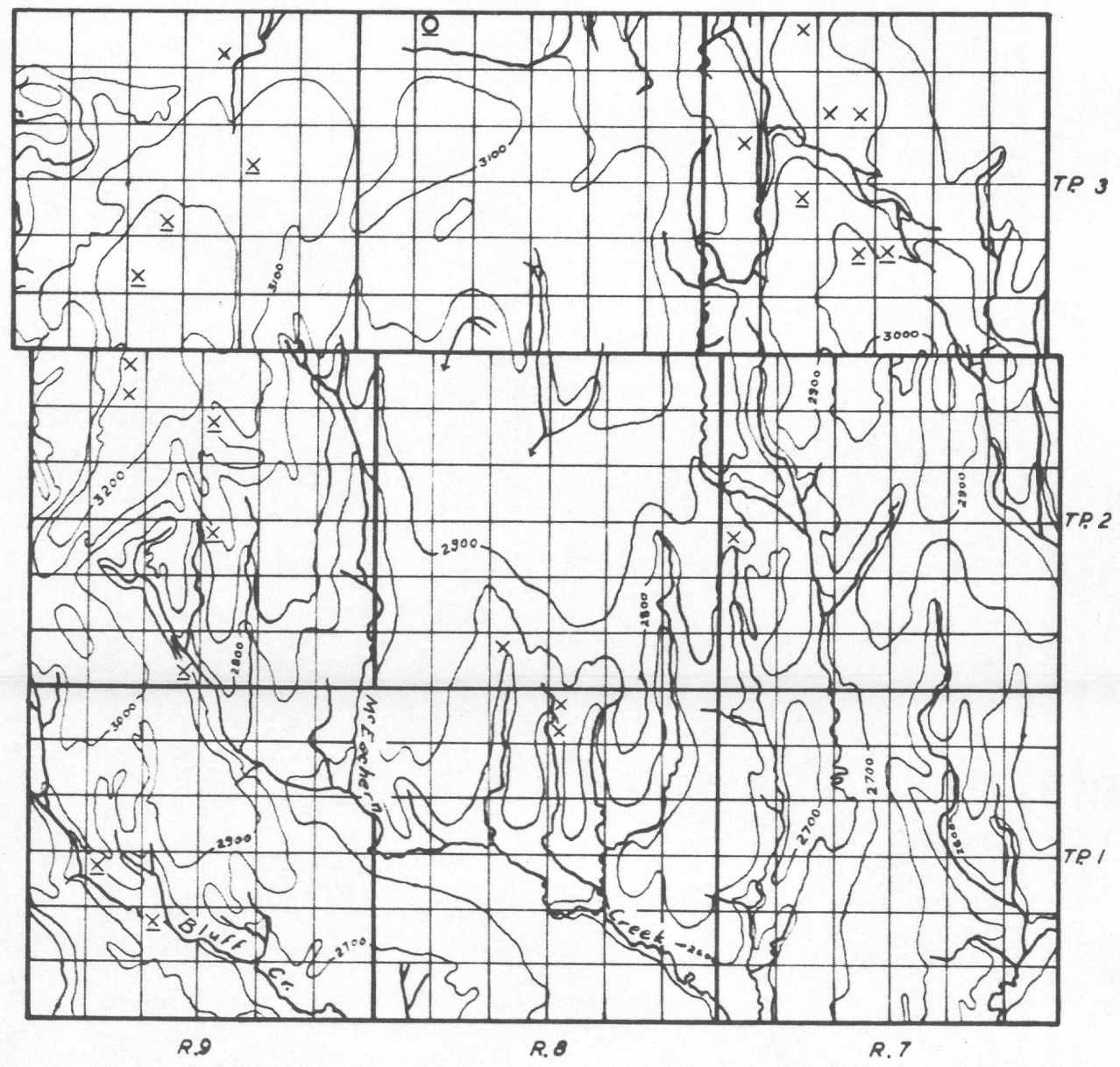
RURAL MUNICIPALITY OF.....NO-15, SASKATCHEWAN

FIGURE 1



Map showing the surface and bedrock geology as it affects the supply of ground water, and areas in which the ground water occurs

FIGURE 2



Map showing the drainage and relief, and the location and types of wells with source of ground water supply

- Well class 1  
In drift In bedrock
- Flowing wells (These are usually designated as Flowing Artesian wells)
- Well class 2  
In drift In bedrock
- Wells in which the water is under pressure but does not rise to the surface (These are usually designated as Non-flowing Artesian wells)
- Well class 3  
In drift In bedrock
- Wells in which the water does not rise above the water table (These are usually designated as Non-Artesian wells)
- Dry holes  
In drift In bedrock
- Contours (interval 100 feet)

