

# RURAL MUNICIPALITY OF WAVERLEY NO-44, SASKATCHEWAN

Recent stream deposits in which small supplies of ground water are obtained within 15 feet of the surface

Glacial lake clays. Ground water is obtained within 55 feet of the surface from sand and gravel beds lying at or near the contact between the overlying lake clays and the lower boulder clay

Area of knolls and depressions in glacial drift (moraine). The drift is thin in this area and contains only small supplies of water

Area of boulder clay or till. The drift is too thin in the eastern townships of this municipality to carry water but elsewhere in it fair supplies of water are obtained from isolated sand and gravel pockets within 65 feet of the surface

Ravenscrag formation

Eastend formation

**NOTE:**  
Area where only drift symbols are shown is underlain by the Bearpaw formation

Area in which ample supplies of water of good quality are obtained from the glacial drift within 20 feet of the surface

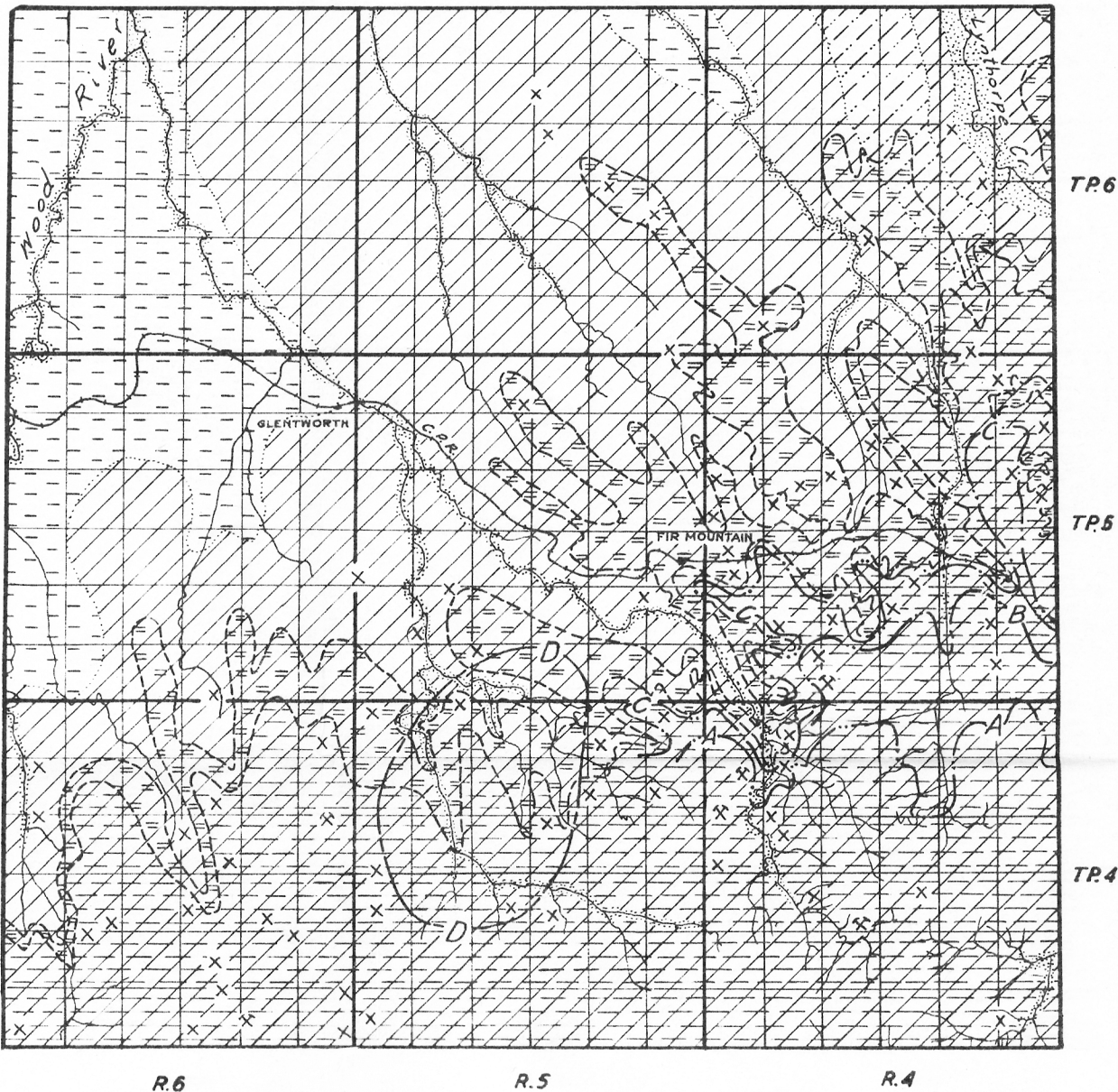
Boundary of "A" water-bearing horizon ranging in elevation from 2875 to 2940 feet above sea-level

Boundary of "B" water-bearing horizon ranging in elevation from 2775 to 2825 feet above sea-level

Boundary of "C" water-bearing horizon ranging in elevation from 2700 to 2740 feet above sea-level

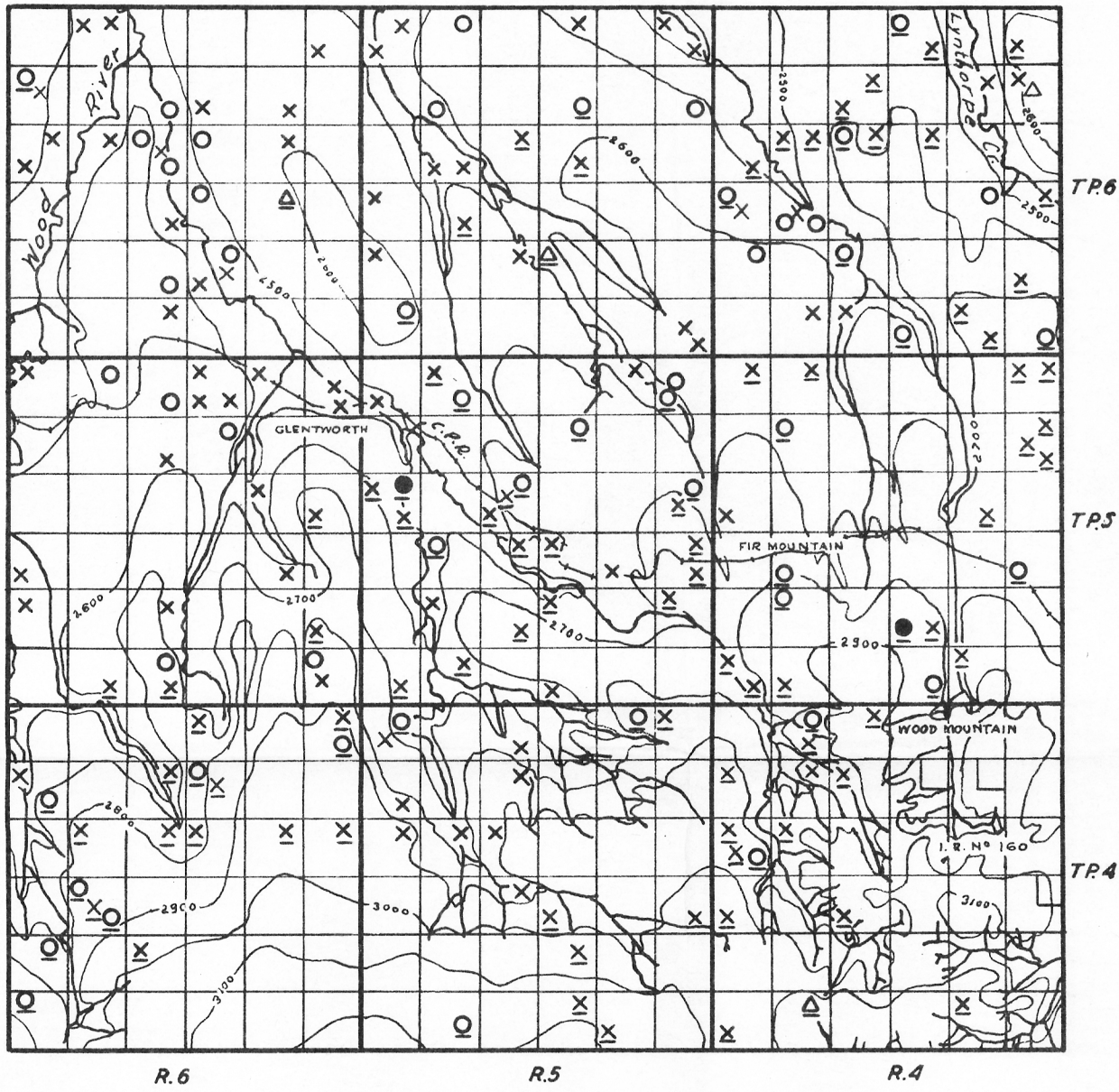
Outcrop of bedrock

FIGURE 1



Map showing the surface and bedrock geology as it affects the supply of ground water, and areas in which the ground water occurs

FIGURE 2



Map showing the drainage and relief, and the location and types of wells with source of ground water supply

Well class 1  
In drift In bedrock

Flowing wells (These are usually designated as Flowing Artesian wells)

Well class 2  
In drift In bedrock

Wells in which the water is under pressure but does not rise to the surface (These are usually designated as Non-flowing Artesian wells)

Well class 3  
In drift In bedrock

Wells in which the water does not rise above the water table (These are usually designated as Non-Artesian wells)

Dry holes  
In drift In bedrock

Contours (interval 100 feet)

Scale of miles