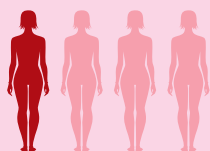


CANCER BY STAGE

Breast and Prostate

Among women in Canada, 2015



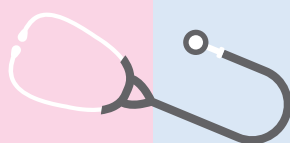
1 in 4 new cancer cases

14% of cancer-related deaths

Early detection, 2011–2015

More than **80%** of female breast cancer was detected at stages 1 and 2.

Over **50%** of these cases were diagnosed in women aged 60 to 79.



Stage at diagnosis, 2011–2015

STAGE 1

47%

STAGE 2

35%

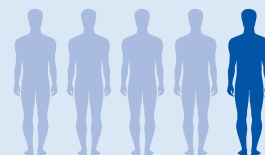
STAGE 3

12%

STAGE 4

5%

Among men in Canada, 2015



1 in 5 new cancer cases

Less than **10%** of cancer-related deaths

Early detection, 2011–2015

74% of prostate cancer cases were diagnosed at stages 1 and 2.

Almost **78%** of these cases were diagnosed in men aged 60 to 79.

Stage at diagnosis, 2011–2015

STAGE 1

23%

STAGE 2

52%

STAGE 3

14%

STAGE 4

9%

Stages of cancer

STAGE 1

Tumour is small and contained within the organ in which it started.

STAGE 2

Tumour is larger and may have begun to spread.

STAGE 3

Tumour is large and has spread into nearby tissues and lymph nodes.

STAGE 4

Cancer has spread through the blood or lymphatic system to distant sites in the body.

Notes:

- Cancer incidence and stage data exclude Quebec, as data for Quebec are not available in the Canadian Cancer Registry for 2011 to 2015.
- Cancer stage data are restricted to people diagnosed at ages 18 to 79.
- Stage data do not add to 100% as a small proportion of cases could not be assigned a specific stage ('Unknown' stage).

Sources: Statistics Canada, Canadian Cancer Registry and Canadian Vital Statistics Death Database. Canadian Cancer Statistics Advisory Committee. Canadian Cancer Statistics 2018: A special report on cancer incidence by stage. Toronto, ON: Canadian Cancer Society; 2018. Available at: cancer.ca/statistics

ISBN: 978-0-660-27092-0
Catalogue number: 11-627-M



Statistics
Canada Statistique
Canada

www.statcan.gc.ca

Canada