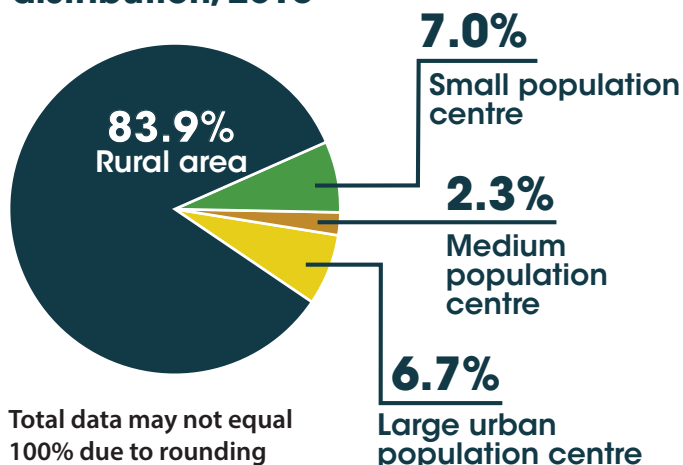
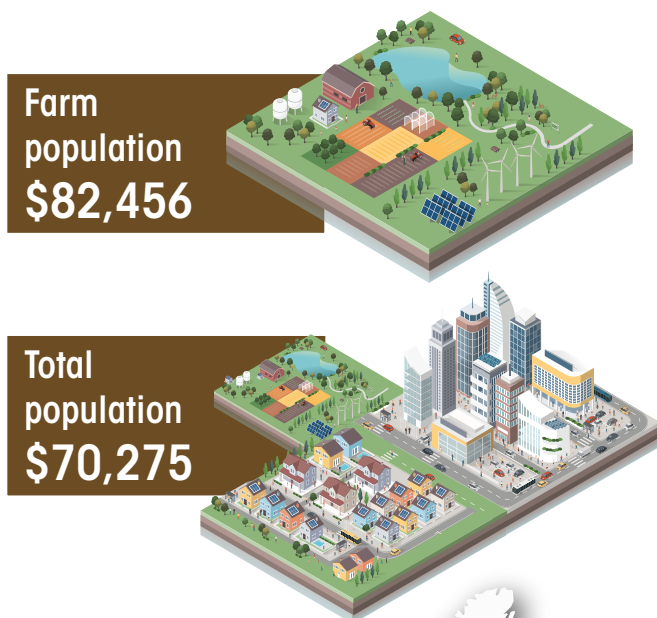


The socioeconomic portrait of Canada's evolving farm population

Rural vs urban farm population distribution, 2016



Median household income for the farm vs total population, 2016



In 1931,

1 in 3

Canadians was a member of the farm population.

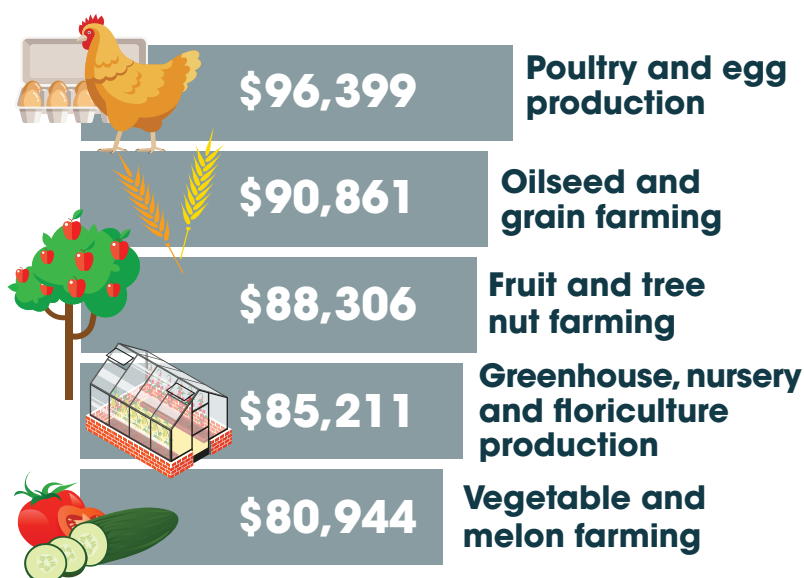
In 2016,

1 in 58

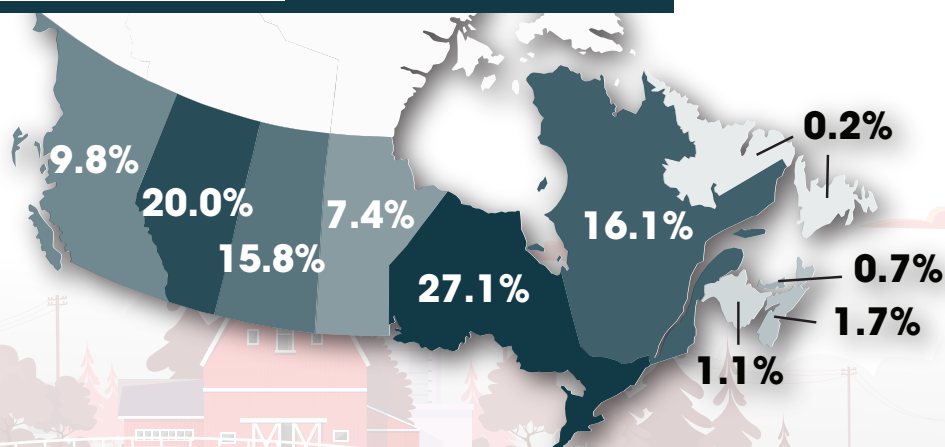
Canadians was a member of the farm population.



Median household income by select farm type, 2016



Distribution of the Canadian farm population by province, 2016



Distribution of Canadian population by province, 2016

1.5%	Newfoundland and Labrador
0.4%	Prince Edward Island
2.6%	Nova Scotia
2.1%	New Brunswick
23.2%	Quebec
38.6%	Ontario
3.6%	Manitoba
3.1%	Saskatchewan
11.6%	Alberta
13.3%	British Columbia