

DOMINION BUREAU OF STATISTICS - CANADA  
AGRICULTURAL BRANCH

Dominion Statistician:  
Chief, Agricultural Branch:  
Statistician, Agricultural Branch:

S.A. Cudmore, M.A. (Oxon.), F.S.S., F.R.S.C.  
C.F. Wilson, Ph.D.  
Ian McArthur, M.Sc.

10 cents per copy

CASH INCOME FROM THE SALE OF FARM PRODUCTS JANUARY TO JUNE, 1940 TO 1942

Ottawa, September 11, 1942 - The Dominion Bureau of Statistics issues to-day estimates of the cash income from the sale of farm products in Canada for the period January to June, 1940 to 1942. Income by months in 1942 from the Prairie Provinces is presented in Tables 5 to 8. These estimates are based on reports of marketings and prices received by farmers for the principal farm products. The estimates are subject to revision as more complete data on production and marketings become available.

SUMMARY

Cash income from the sale of farm products in Canada during the first six months of 1942 totalled \$399.2 million as compared with \$343.3 million in the corresponding period of 1941 and \$259.3 million in 1940. The most important feature of the 1942 cash income was the substantial increase which occurred in the returns from livestock and livestock products. Income from wheat was sharply lower in the first half of 1942 as compared with the same period of 1941. This reduction was due to the abnormally large proportion of the 1940 crop which was marketed during the early months of 1941. Income from cattle and calves increased from \$53.8 million in the first half of 1941 to \$76.0 million in 1942. Income from hogs increased from \$62.8 million to \$89.3 million and in the case of dairy products the increase was from \$70.2 million to \$97.4 million. Greater output combined with higher prices were responsible for these increases.

Cash income in the first half of 1942 was greater than in the same months of 1941 in all provinces except Saskatchewan. The greatest increase occurred in Ontario where livestock and livestock products predominate as sources of farm income. Substantial gains were also recorded in Quebec, the Maritime Provinces and British Columbia.

The greatest percentage of farm cash income is usually received during the last six months of the year when marketings of grain and livestock are at a high level. In 1941 total cash income for the year was \$876.5 million, of which 39.2 per cent had been received up to the end of June. In 1940, when there was a more normal distribution of income from wheat, only 35.1 per cent of the total income for the year was received during the first six months.

Record yields of grains and a further expansion in livestock production should result in a high level of income to farmers during the last half of 1942. Income from wheat, however, will depend largely on the volume of deliveries which will be possible in the light of the crowded storage situation. The minimum price of wheat is, however, 20 cents per bushel higher than a year ago.

Income received by farmers in the form of government subsidies and bonus payments are not included in these calculations, except in those cases where the assistance has resulted in higher prices to the producers.

Cash Income from the Sale of Farm Products  
January to June, 1940, 1941 and 1942

Thousand Dollars

Province	1940	1941	1942
Prince Edward Island .....	3,686	2,892	4,606
Nova Scotia .....	6,246	7,011	8,821
New Brunswick .....	5,973	6,039	8,905
Quebec .....	48,459	54,104	67,024
Ontario .....	97,415	106,510	148,144
Manitoba .....	16,745	26,516	32,288
Saskatchewan .....	32,553	63,501	48,525
Alberta .....	37,789	65,331	65,961
British Columbia .....	10,480	11,407	14,914
Canada .....	259,346	343,311	399,188

1905  
THE PASSENGER

THE PASSENGER  
THE PASSENGER  
THE PASSENGER

THE PASSENGER  
THE PASSENGER  
THE PASSENGER

THE PASSENGER  
THE PASSENGER  
THE PASSENGER

THE PASSENGER  
THE PASSENGER  
THE PASSENGER

THE PASSENGER  
THE PASSENGER  
THE PASSENGER

THE PASSENGER  
THE PASSENGER  
THE PASSENGER

THE PASSENGER  
THE PASSENGER  
THE PASSENGER

THE PASSENGER  
THE PASSENGER  
THE PASSENGER

THE PASSENGER  
THE PASSENGER  
THE PASSENGER



Table 2.

Cash Income by Provinces and Items, January to June, 1940.

Thousand Dollars

	Prince Edward Island	Nova Scotia	New Brunswick	Quebec	Ontario
Wheat	-	-	-	-	-
Oats	138	109	171	1,007	1,651
Barley	-	-	-	415	1,610
Rye	-	-	-	-	-
Flax	-	-	-	-	-
Other Field Crops <u>1/</u>	1,549	335	2,002	4,208	8,406
Total Field Crops	1,687	444	2,173	5,630	11,667
Cattle & Calves	261	351	224	5,989	22,004
Sheep & Lambs	2	19	21	147	337
Hogs	584	483	627	8,962	22,759
Dairy Products	241	1,592	981	15,053	23,205
Poultry & Eggs	334	448	382	2,802	7,852
Other Livestock Products <u>2/</u>	514	509	634	2,174	3,298
Total Livestock Products	1,936	3,402	2,869	35,127	79,455
Miscellaneous <u>3/</u>	63	2,400	931	7,702	6,293
Total Cash Income	3,686	6,246	5,973	48,459	97,415
	Manitoba	Saskat- chewan	Alberta	British Columbia	Canada
Wheat	1,914	15,130	9,890	246	27,180
Oats	265	2,104	1,786	27	7,258
Barley	754	896	585	-	4,260
Rye	74	497	132	-	703
Flax	58	324	37	-	419
Other Field Crops <u>1/</u>	262	68	194	608	17,632
Total Field Crops	3,327	19,019	12,624	881	57,452
Cattle & Calves	4,033	3,664	7,516	636	44,678
Sheep & Lambs	58	58	671	57	1,370
Hogs	3,401	4,011	10,982	609	52,418
Dairy Products	3,666	3,127	3,502	2,594	53,961
Poultry & Eggs	1,230	1,615	1,162	2,167	17,992
Other Livestock Products <u>2/</u>	646	848	1,160	473	10,256
Total Livestock Products	13,034	13,323	24,993	6,536	180,675
Miscellaneous <u>3/</u>	384	211	172	3,063	21,219
Total Cash Income	16,745	32,553	37,789	10,480	259,346

1/ Includes - Corn, Hay & Clover, Potatoes, Sugar Beets, Seeds & Tobacco.

2/ Includes - Wool, Horses, Honey & Fur Farming.

3/ Includes - Fruits, Vegetables, Forest Products & Maple Products.



Table 3.

Cash Income by Provinces and Items, January to June, 1941.

Thousand Dollars

	Prince Edward Island	Nova Scotia	New Brunswick	Quebec	Ontario
Wheat	-	-	-	-	-
Oats	66	62	135	977	1,297
Barley	-	-	-	423	1,379
Rye	-	-	-	-	-
Flax	-	-	-	-	-
Other Field Crops <u>1/</u>	812	292	1,752	3,148	5,014
Total Field Crops	878	354	1,887	4,548	7,690
Cattle & Calves	321	509	307	8,094	24,759
Sheep & Lambs	1	18	18	259	402
Hogs	370	413	463	8,746	26,143
Dairy Products	355	2,157	1,217	19,374	28,027
Poultry & Eggs	364	509	398	2,827	8,084
Other Livestock Products <u>2/</u>	532	577	681	2,074	3,117
Total Livestock Products	1,943	4,183	3,084	41,374	90,532
Miscellaneous <u>3/</u>	71	2,474	1,068	8,182	8,288
Total Cash Income	2,892	7,011	6,039	54,104	106,510
	Manitoba	Saskat- chewan	Alberta	British Columbia	Canada
Wheat	8,797	41,131	27,778	258	77,964
Oats	172	976	2,128	45	5,858
Barley	886	501	874	-	4,063
Rye	78	583	127	-	788
Flax	110	485	172	-	767
Other Field Crops <u>1/</u>	435	91	394	635	12,573
Total Field Crops	10,478	43,767	31,473	938	102,013
Cattle & Calves	4,434	4,862	9,792	758	53,836
Sheep & Lambs	54	60	762	58	1,632
Hogs	3,987	6,553	15,392	694	62,761
Dairy Products	5,238	5,485	5,465	2,924	70,242
Poultry & Eggs	1,326	1,841	1,335	2,334	19,018
Other Livestock Products <u>2/</u>	593	708	929	457	9,668
Total Livestock Products	15,632	19,509	33,675	7,225	217,157
Miscellaneous <u>3/</u>	406	225	183	3,244	24,141
Total Cash Income	26,516	63,501	65,331	11,407	343,311

1/ Includes - Corn, Hay & Clover, Potatoes, Sugar Beets, Seeds & Tobacco.

2/ Includes - Wool, Horses, Honey & Fur Farming.

3/ Includes - Fruits, Vegetables, Forest Products & Maple Products.



# Table 1

Table 1. The following table shows the results of the survey conducted in 1998.

## Table 1. Results of the survey

Year	1998	1999	2000	2001	2002
1. Total number of respondents	100	100	100	100	100
2. Number of respondents who are male	50	50	50	50	50
3. Number of respondents who are female	50	50	50	50	50
4. Number of respondents who are aged 18-24	20	20	20	20	20
5. Number of respondents who are aged 25-34	30	30	30	30	30
6. Number of respondents who are aged 35-44	20	20	20	20	20
7. Number of respondents who are aged 45-54	10	10	10	10	10
8. Number of respondents who are aged 55-64	10	10	10	10	10
9. Number of respondents who are aged 65 and over	10	10	10	10	10
10. Number of respondents who are married	40	40	40	40	40
11. Number of respondents who are single	60	60	60	60	60
12. Number of respondents who are divorced	10	10	10	10	10
13. Number of respondents who are widowed	10	10	10	10	10
14. Number of respondents who are employed	80	80	80	80	80
15. Number of respondents who are unemployed	20	20	20	20	20
16. Number of respondents who are self-employed	10	10	10	10	10
17. Number of respondents who are retired	10	10	10	10	10
18. Number of respondents who are students	10	10	10	10	10
19. Number of respondents who are housewives	10	10	10	10	10
20. Number of respondents who are other	10	10	10	10	10

1. The number of respondents who are aged 18-24 is 20.
2. The number of respondents who are aged 25-34 is 30.
3. The number of respondents who are aged 35-44 is 20.

Table 4.

Cash Income by Provinces and Items, January to June, 1942.

Thousand Dollars

	Prince Edward Island	Nova Scotia	New Brunswick	Quebec	Ontario
Wheat	-	-	-	-	-
Oats	66	94	108	899	850
Barley	-	-	-	498	1,593
Rye	-	-	-	-	-
Flax	-	-	-	-	-
Other Field Crops <u>1/</u>	1,789	483	3,409	4,424	13,175
Total Field Crops	1,855	577	3,517	5,821	15,618
Cattle & Calves	357	707	385	10,461	34,270
Sheep & Lambs	1	20	24	334	399
Hogs	599	611	513	9,092	32,206
Dairy Products	548	2,789	2,042	26,074	40,854
Poultry & Eggs	608	740	655	3,951	11,872
Other Livestock Products <u>2/</u>	563	616	642	2,322	3,270
Total Livestock Products	2,676	5,483	4,261	52,234	122,871
Miscellaneous <u>3/</u>	75	2,761	1,127	8,969	9,650
Total Cash Income	4,606	8,821	8,905	67,024	148,144

	Manitoba	Saskat- chewan	Alberta	British Columbia	Canada
Wheat	5,894	13,135	8,628	357	28,014
Oats	832	1,263	1,517	63	5,692
Barley	1,072	630	463	-	4,256
Rye	64	256	48	-	368
Flax	175	750	212	-	1,137
Other Field Crops <u>1/</u>	921	624	446	538	25,809
Total Field Crops	8,958	16,658	11,314	958	65,276
Cattle & Calves	6,921	7,893	13,823	1,195	76,012
Sheep & Lambs	96	72	936	59	1,941
Hogs	6,278	11,544	27,312	1,112	89,267
Dairy Products	6,240	6,952	7,633	4,294	97,426
Poultry & Eggs	2,586	4,149	3,401	3,043	31,005
Other Livestock Products <u>2/</u>	775	1,020	1,347	510	11,065
Total Livestock Products	22,896	31,630	54,452	10,213	306,716
Miscellaneous <u>3/</u>	434	237	195	3,743	27,190
Total Cash Income	32,288	48,525	65,961	14,914	399,188

1/ Includes - Corn, Hay & Clover, Potatoes, Sugar Beets, Seeds & Tobacco.

2/ Includes - Wool, Horses, Honey & Fur Farming.

3/ Includes - Fruits, Vegetables, Forest Products & Maple Products.





Table 5.

Cash Income from the Sale of Farm Products in the Prairie Provinces, by months,

PRAIRIE PROVINCES

January to June, 1942

	Jan.	Feb.	Mar.	Apr.	May	June	Total 6 Mos. 1942
( thousand dollars )							
Wheat	5,504	3,509	4,745	3,527	4,027	6,345	27,657
Oats	1,183	810	479	300	322	518	3,612
Barley	642	475	358	152	187	351	2,165
Rye	138	93	59	26	25	27	368
Flax	464	295	149	62	51	116	1,137
Other Field Crops <u>1/</u>	249	383	196	878	156	129	1,991
Total Field Crops	8,180	5,565	5,986	4,945	4,768	7,486	36,930
Cattle & Calves	5,398	3,386	4,511	5,505	4,264	5,573	28,637
Sheep & Lambs	199	226	294	180	101	104	1,104
Hogs	8,875	7,308	7,115	8,659	7,038	6,139	45,134
Dairy Products	2,522	2,423	2,856	3,075	4,298	5,651	20,825
Poultry & Eggs	836	501	945	1,785	3,718	2,351	10,136
Other Livestock Products <u>2/</u>	572	371	473	354	152	1,220	3,142
Total Livestock Products	18,402	14,215	16,194	19,558	19,571	21,038	108,978
Miscellaneous <u>3/</u>	241	160	80	80	80	225	866
Total Cash Income	26,823	19,940	22,260	24,583	24,419	28,749	146,774

Table 6.

MANITOBA

	Jan.	Feb.	Mar.	Apr.	May	June	Total 6 Mos. 1942
( thousand dollars )							
Wheat	1,195	828	1,029	444	718	1,680	5,894
Oats	186	159	122	58	81	226	832
Barley	286	227	170	70	98	221	1,072
Rye	21	15	12	4	4	8	64
Flax	63	46	27	8	11	20	175
Other Field Crops <u>1/</u>	204	251	133	120	107	106	921
Total Field Crops	1,955	1,526	1,493	704	1,019	2,261	8,958
Cattle & Calves	1,115	783	1,120	1,158	1,074	1,671	6,921
Sheep & Lambs	22	16	17	8	3	30	96
Hogs	1,264	1,032	975	1,168	1,012	827	6,278
Dairy Products	755	733	858	921	1,314	1,659	6,240
Poultry & Eggs	185	129	245	455	974	598	2,586
Other Livestock Products <u>2/</u>	224	125	133	69	7	217	775
Total Livestock Products	3,565	2,818	3,348	3,779	4,384	5,002	22,896
Miscellaneous <u>3/</u>	124	82	41	41	41	105	434
Total Cash Income	5,644	4,426	4,882	4,524	5,444	7,368	32,288

1/ Includes - Corn, Hay & Clover, Potatoes, Sugar Beets, Seeds & Tobacco.

2/ Includes - Wool, Horses, Honey & Fur Farming.

3/ Includes - Fruits, Vegetables, Forest Products & Maple Products.

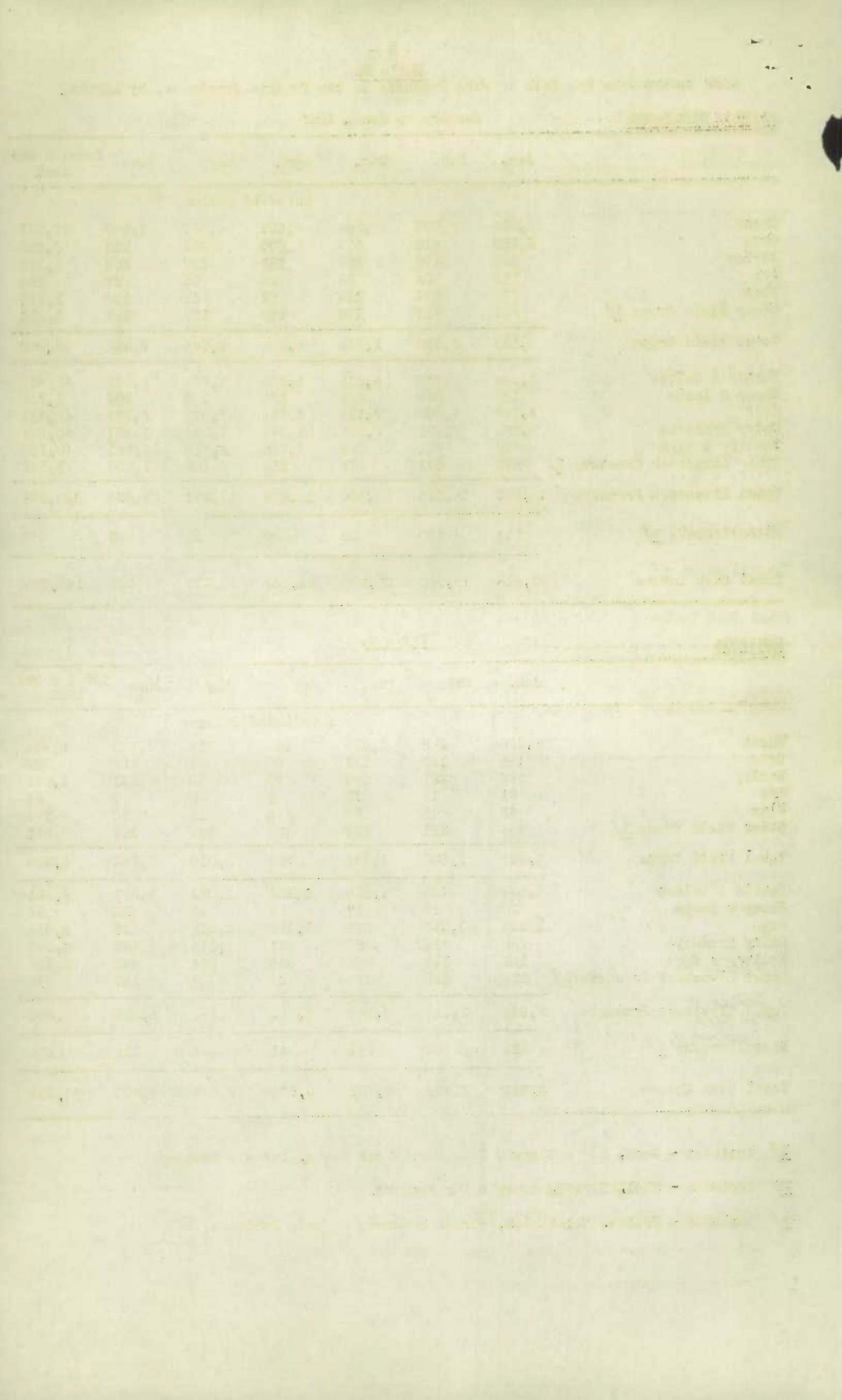


Table 7.

Cash Income from the Sale of Farm Products, by provinces,

SASKATCHEWAN

January to June, 1942

	Jan.	Feb.	Mar.	Apr.	May	June	Total 6 Mos. 1942
( thousand dollars )							
Wheat	2,236	1,486	2,113	1,757	2,310	3,233	13,135
Oats	363	249	164	127	151	209	1,263
Barley	192	131	98	47	61	101	630
Rye	100	65	38	18	19	16	256
Flax	315	181	89	47	35	83	750
Other Field Crops <u>1/</u>	11	17	29	529	23	15	624
Total Field Crops	3,217	2,129	2,531	2,525	2,599	3,657	16,658
Cattle & Calves	1,606	994	1,182	1,371	1,067	1,673	7,893
Sheep & Lambs	23	11	11	5	3	19	72
Hogs	2,628	1,890	1,774	2,073	1,741	1,438	11,544
Dairy Products	799	795	933	969	1,479	1,977	6,952
Poultry & Eggs	332	203	386	746	1,503	979	4,149
Other Livestock Products <u>2/</u>	126	103	123	156	89	423	1,020
Total Livestock Products	5,514	3,996	4,409	5,320	5,882	6,509	31,630
Miscellaneous <u>3/</u>	73	49	24	24	24	43	237
Total Cash Income	8,804	6,174	6,964	7,869	8,505	10,209	48,525

Table 8.

ALBERTA

	Jan.	Feb.	Mar.	Apr.	May	June	Total 6 Mos. 1942
( thousand dollars )							
Wheat	2,073	1,195	1,603	1,326	999	1,432	8,628
Oats	634	402	193	115	90	83	1,517
Barley	164	117	90	35	28	29	463
Rye	17	13	9	4	2	3	48
Flax	86	68	33	7	5	13	212
Other Field Crops <u>1/</u>	34	115	34	229	26	8	446
Total Field Crops	3,008	1,910	1,962	1,716	1,150	1,568	11,314
Cattle & Calves	2,677	1,609	2,209	2,976	2,123	2,229	13,823
Sheep & Lambs	154	199	266	167	95	55	936
Hogs	4,983	4,386	4,366	5,418	4,285	3,874	27,312
Dairy Products	968	895	1,065	1,185	1,505	2,015	7,633
Poultry & Eggs	319	169	314	584	1,241	774	3,401
Other Livestock Products <u>2/</u>	222	143	217	129	56	580	1,347
Total Livestock Products	9,323	7,401	8,437	10,459	9,305	9,527	54,452
Miscellaneous <u>3/</u>	44	29	15	15	15	77	195
Total Cash Income	12,375	9,340	10,414	12,190	10,470	11,172	65,961

1/ Includes - Corn, Hay & Clover, Potatoes, Sugar Beets, Seeds & Tobacco.

2/ Includes - Wool, Horses, Honey & Fur Farming.

3/ Includes - Fruits, Vegetables, Forest Products & Maple Products.



STATISTICS CANADA LIBRARY  
BIBLIOTHÈQUE STATISTIQUE CANADA



1010756440