

22
22-002
no. 8
1940
c. 1

Authority of the Hon. James A. MacKinnon, M.P.
Minister of Trade and Commerce
DOMINION BUREAU OF STATISTICS - CANADA
AGRICULTURAL BRANCH

DOES NOT CIRCULATE
NE PAS PRÊTER
\$2.00 per year

Dominion Sta
Acting Chief, Agricultural Branch:

R. H. Coats, LL.D., F.R.S.C.
C. F. Wilson, Ph.D.

Ottawa, January 21, 1941, 3 p.m. - The Dominion Bureau of Statistics issues today the third estimate of the area, production and value of field crops in Canada in 1940. In accordance with previous practice, the estimates of wheat, rye and flaxseed may be subjected to further revision when full marketing statistics for the western provinces are available after the end of the crop year. The average prices used in crop valuation are based on monthly and special compilations up to the end of December, 1940, so these may also require revision due to price changes during the last seven months of the crop season.

SUMMARY

The third estimate of the 1940 Canadian wheat crop is placed at 551,390,000 bushels, representing an upward revision of 4,211,000 bushels from the second estimate issued last November. The 1940 wheat crop is 30,767,000 bushels above the final estimate of the 1939 crop of 520,623,000 bushels, and supersedes that crop as the second largest in Canadian wheat history. The production of fall wheat in 1940 amounted to 22,099,000 bushels, and that of spring wheat to 529,291,000 bushels. The spring wheat estimate in Canada includes the total spring wheat production in the Prairie Provinces, which according to the third estimate is placed at 525,000,000 bushels. This is an increase of 5,000,000 bushels over the second estimate issued last November, and is 31,000,000 bushels above the final estimate of the 1939 Prairie wheat production at 494,000,000 bushels. The Manitoba wheat estimate for 1940 has been reduced 4,000,000 bushels to 66,000,000, compared with a final 1939 figure of 61,300,000 bushels. The 1940 Saskatchewan estimate has been raised by 12,000,000 to 272,000,000 bushels, almost unchanged from the final 1939 estimate of 271,300,000 bushels. Alberta's present estimate has been reduced by 3,000,000 to 187,000,000 bushels, compared with the 1939 production of 161,400,000 bushels. In each of the Prairie Provinces the third estimate of the 1940 wheat production has been revised in light of reported stocks of wheat remaining on farms, in addition to the reported yields per acre.

The third estimate of the 1940 oat crop in Canada amounts to 380,526,000 bushels, representing a small decrease from the 384,407,000 bushels produced in 1939. Reductions in each of the Prairie Provinces and in Ontario have been made from the second estimates of the 1940 oat crop. Barley production in 1940, estimated at 104,256,000 bushels, is about one million bushels larger than that of last year. The rye crop of 13,994,000 bushels is less than that of 1939 by 1,313,000 bushels, while the 1940 flaxseed production, estimated at 3,189,000 bushels, is substantially larger than the 1939 crop of 2,044,000 bushels.

The production of potatoes in Canada in 1940 amounted to 42,300,000 cwt., an increase of about 6 million cwt. as compared with the 1939 crop. Hay and clover production at 14,070,000 tons is slightly larger than the crop of 1939, while the alfalfa crop at 2,588,000 tons is up 421,000 tons. The 1940 commercial production of sugar beets, estimated at 830,100 tons, shows a large increase of 244,100 tons as compared with last year's crop, due partly to the introduction of this crop into Manitoba.

Increases in production are recorded for peas, turnips, etc. and grain hay, while reductions are indicated for beans, buckwheat, mixed grains and both corn for husking and fodder corn.

The gross farm value of field crops produced in Canada in 1940 is now estimated at \$651,228,000, a decrease of \$34,611,000 or 5 per cent as compared with the finally revised value of 1939 crops; viz., \$685,839,000. The 1940 value of field crops is, however, the highest in any year since 1930, with the exception of 1939. Lowered prices were responsible for most of the declines in this year's total values. Increased production of wheat offset a small decline in price, with the value of the 1940 crop amounting to \$283,269,000 as compared with \$282,151,000, the value of the 1939 crop. The value of the oat crop was down \$16,043,000 and that of the barley crop \$4,472,000. The 1940 potato crop, valued at \$33,555,000, shows a reduction of \$7,510,000.

The total area of the principal field crops in Canada in 1940 is estimated at 60,907,500 acres as compared with 59,224,600 acres in 1939, an increase of 1,682,900 acres.

12/15/1914

Published by the
Government of the United States
Department of the Interior
Bureau of Land Management



The following is a list of the names of the persons who have been appointed to the various positions in the Bureau of Land Management, Department of the Interior, for the year ending June 30, 1915.

The following is a list of the names of the persons who have been appointed to the various positions in the Bureau of Land Management, Department of the Interior, for the year ending June 30, 1915.

The following is a list of the names of the persons who have been appointed to the various positions in the Bureau of Land Management, Department of the Interior, for the year ending June 30, 1915.

The following is a list of the names of the persons who have been appointed to the various positions in the Bureau of Land Management, Department of the Interior, for the year ending June 30, 1915.

The following is a list of the names of the persons who have been appointed to the various positions in the Bureau of Land Management, Department of the Interior, for the year ending June 30, 1915.

AGRICULTURAL SEASON OF 1940

The crop season of 1940 was generally favourable throughout Canada and no areas of any large extent suffered from crop failure. For the second year in succession, grain yields in the Prairie Provinces were very good and the second largest wheat crop in its history was harvested. In eastern Canada, crop production was not quite as satisfactory as in the previous year. A backward spring delayed seeding but good progress was made by crops in the middle of the summer and fodder crops yielded particularly well. An early spring in British Columbia and favourable growing conditions resulted in excellent yields of early crops. Drier conditions later in the summer, however, lowered yields of later crops but on the whole the season was fairly satisfactory.

In the Maritime Provinces unsettled weather during the first twenty days of May delayed field work. In the latter part of May and early in June the weather cleared and seeding proceeded rapidly. Hay and clover meadows wintered well and during the first part of the summer were very promising. In the last half of June rains delayed seeding in heavy soils and acreages of grain crops were not as great as had been expected earlier in the season. Up to the first week of July, cool weather and lack of sun resulted in slow growth but about the middle of July the weather cleared and crops made better progress. The weather in August was particularly favourable and a good hay crop was harvested. Insect damage was relatively light. Root and fodder crop harvests were above those of 1939, while yields of grain were about the same as those of the previous year.

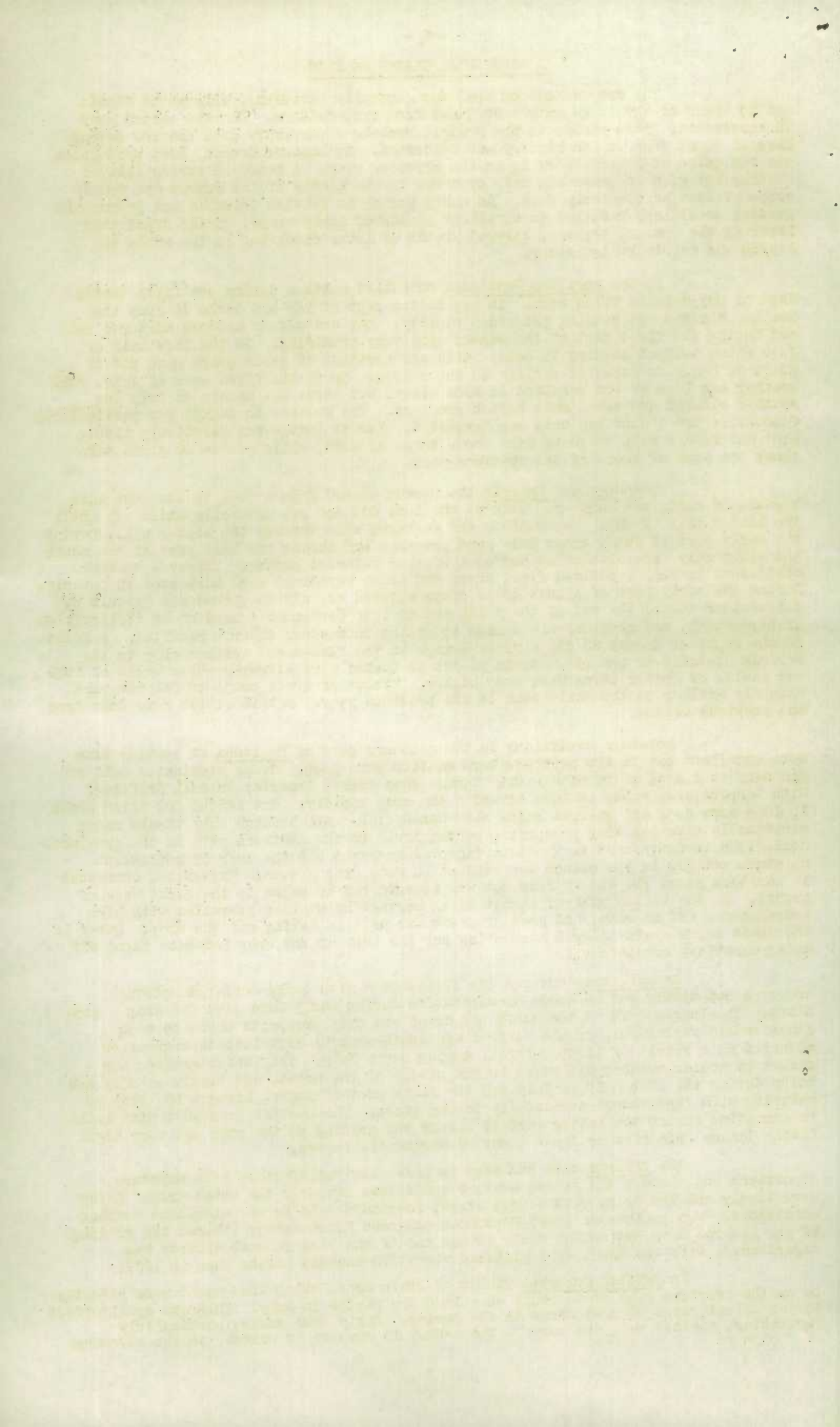
In Quebec and Ontario the season opened from a week to ten days late because of cold, wet weather. Work on the land did not get generally under way until the latter part of May. Hay meadows and pastures came through the winter well. During the early part of June, crops made good progress but during the last part of the month and early July excessive rains and cool weather retarded growth. Improved weather conditions in July benefited field crops and heavy hay crops were harvested in Ontario. During the early part of August grain crops matured rapidly in Quebec and Ontario but wet weather toward the end of the month and on into September caused great difficulties in harvesting, and considerable damage to grains in western Ontario resulted. A frost on the night of August 23 did serious damage to the flue-cured tobacco crop in the Norfolk district of Ontario. Grain yields in Quebec were slightly above those of 1939 and yields of fodder crops were also higher. Yields of grain crops in Ontario were slightly smaller on the whole than in the previous year. Potato yields were down from the previous season.

Moisture conditions in the southern part of Manitoba at seeding time were excellent but in the north-western section were poor. Crops germinated well and got away to a good start with little damage from frost, insects, or soil drifting. High temperatures early in June advanced the crop rapidly. The second and third weeks in June were cool and general rains were beneficial. All through July timely rains continually advanced crop prospects, particularly in the southern part of the province. Conditions in north-western Manitoba improved somewhat but the lack of sufficient moisture earlier in the season was evident in poor crop stands. Harvesting commenced in Manitoba about the end of July but was interrupted by rains in the first week of August. In the second week of August ideal harvesting weather prevailed with high temperatures and no rain, and good progress was made in taking off the crop. Later in the month rains again delayed harvesting but the bulk of the crop had been taken off under excellent conditions.

Saskatchewan entered the 1940 season with badly depleted moisture reserves but timely and adequate precipitation during early June gave the crop a good start. The latter part of the month was drier and crop prospects began to show considerable variation. In the central and south-central districts deterioration occurred as a result of light rainfall during early July. This deterioration was offset by cooler weather and rains in the middle of the month, and timely showers and rains during the last half of July and the first part of August brought the crop to maturity with improvement continually taking place. The harvest proceeded with little interruption during the latter part of August and grading of the crop was very high. Little damage from rust or frost occurred during the season.

The Alberta crop was sown in generally satisfactory soil moisture conditions and through the season weather conditions favoured the wheat crop. Rains were timely and the crop, with a good start, responded well to the excellent weather conditions. Wet weather in early September and some frost damage lowered the grading of the Alberta crop but on the whole it was one of the best seasons Alberta has experienced, with the wheat crop yielding about 2.3 bushels higher than in 1939.

In British Columbia yields of grain crops other than wheat were slightly below the previous year as a result of a long dry period in July. This dry spell offset the excellent start of most crops in the spring. Early sown crops, particularly vegetables, yielded well and were on the market in advance of normal, to the advantage of producers.



WHEAT PRODUCTION IN THE PRAIRIE PROVINCES, 1940

The following table lists the three estimates of the 1940 wheat crop in the Prairie Provinces, together with the final estimate for 1939:-

Province	1940			1939
	September	November	January	Final
	bu.	bu.	bu.	bu.
Manitoba	71,000,000	70,000,000	66,000,000	61,300,000
Saskatchewan	260,000,000	260,000,000	272,000,000	271,300,000
Alberta	203,000,000	190,000,000	187,000,000	161,400,000
Prairie Provinces	534,000,000	520,000,000	525,000,000	494,000,000

The third estimate of the 1940 Prairie wheat crop is 5,000,000 bushels higher than the second estimate published last November. The increase is wholly in the Saskatchewan estimate which has been raised from 260,000,000 to 272,000,000 bushels. Decreases of 4,000,000 bushels in the Manitoba estimate, and 3,000,000 bushels in that for Alberta have reduced the effect of the increase in Saskatchewan on the total estimate for the Prairie Provinces. Compared with the final figure of the 1939 crop, the 1940 crop shows an increase of 31 million bushels. The 1940 production in the Prairie Provinces is second only to that of 1928 when 544,598,000 bushels were produced.

In arriving at the present estimate of the 1940 wheat crop, little use could be made of the marketing records in comparison with the marketings to date in previous crop years. Actually the primary movement of wheat in the Prairie Provinces totalled 290,857,953 bushels in the period from August 1, 1940 to January 10, 1941, in comparison with 365,041,063 bushels delivered from farms in the same period of the previous crop year. The necessary limitation upon the rate of deliveries from the 1940 crop, however, has destroyed their comparability with previous years as a means of providing a check on the yields reported by crop correspondents. On the other hand, the Bureau's farm crop correspondents have reported at the end of November, and again at the end of December, 1940, their remaining stocks of wheat on farms. These two estimates of stocks on farms have been used in conjunction with the yields reported by all groups of the Bureau's crop correspondents in arriving at the January estimates of the 1940 production.

On the basis of the January estimate, the amount of wheat still to be delivered from farms may be approximately determined. According to the best available information, wheat feeding to live stock and poultry in the Prairie Provinces is likely to show an increase of as much as 10 million bushels during the present crop year, as compared with the amount fed in the 1939-40 season. On the other hand the amount of wheat to be used for seed for the 1941 crop is likely to be less than that used in 1940, and will partially offset the increase in the feed item. The combined seed and feed estimates, representing the use of wheat on farms, are not likely to exceed the 57,000,000 bushels indicated in the following tabulation:-

	Bushels
Carry-over on farms, July 31, 1940	14,250,000
1940 crop	525,000,000
Deduct:- Total Farm Supplies	539,250,000
Seed and feed requirements	57,000,000
Deliveries from farms, August 1, 1940-January 10, 1941 ..	290,900,000
Balance for delivery or carry-over on farms	347,900,000
January 10-July 31, 1941	191,350,000

Durum Wheat Production, 1937-1940

Durum wheat is included in the above estimates of wheat production in the Prairie Provinces. Concerning the Durum estimates themselves, a downward revision of 2,000,000 bushels (500,000 in Manitoba and 1,500,000 in Saskatchewan) has been made in the 1940 estimate, which now stands at 8,500,000 bushels. Of this amount, 6,000,000 bushels are in Manitoba and 2,500,000 bushels in Saskatchewan.

The 1939 Durum estimates have been finally revised in the light of disposition data to 10,800,000 bushels, of which 8,500,000 bushels were produced in Manitoba and 2,300,000 in Saskatchewan. The reduction of 500,000 bushels from the third estimate published in January 1940 was entirely in Manitoba.

WHEAT PRODUCTION IN THE PRAIRIE PROVINCES, 1940

The following table lists the three estimates of the 1940 wheat crop in the Prairie Provinces, together with the final estimate for 1939:-

Province	1 9 4 0			1 9 3 9
	September	November	January	Final
	bu.	bu.	bu.	bu.
Manitoba	71,000,000	70,000,000	66,000,000	61,300,000
Saskatchewan	260,000,000	260,000,000	272,000,000	271,300,000
Alberta	203,000,000	190,000,000	187,000,000	161,400,000
Prairie Provinces	534,000,000	520,000,000	525,000,000	494,000,000

The third estimate of the 1940 Prairie wheat crop is 5,000,000 bushels higher than the second estimate published last November. The increase is wholly in the Saskatchewan estimate which has been raised from 260,000,000 to 272,000,000 bushels. Decreases of 4,000,000 bushels in the Manitoba estimate, and 3,000,000 bushels in that for Alberta have reduced the effect of the increase in Saskatchewan on the total estimate for the Prairie Provinces. Compared with the final figure of the 1939 crop, the 1940 crop shows an increase of 31 million bushels. The 1940 production in the Prairie Provinces is second only to that of 1928 when 544,598,000 bushels were produced.

In arriving at the present estimate of the 1940 wheat crop, little use could be made of the marketing records in comparison with the marketings to date in previous crop years. Actually the primary movement of wheat in the Prairie Provinces totalled 290,857,953 bushels in the period from August 1, 1940 to January 10, 1941, in comparison with 365,041,063 bushels delivered from farms in the same period of the previous crop year. The necessary limitation upon the rate of deliveries from the 1940 crop, however, has destroyed their comparability with previous years as a means of providing a check on the yields reported by crop correspondents. On the other hand, the Bureau's farm crop correspondents have reported at the end of November, and again at the end of December, 1940, their remaining stocks of wheat on farms. These two estimates of stocks on farms have been used in conjunction with the yields reported by all groups of the Bureau's crop correspondents in arriving at the January estimates of the 1940 production.

On the basis of the January estimate, the amount of wheat still to be delivered from farms may be approximately determined. According to the best available information, wheat feeding to live stock and poultry in the Prairie Provinces is likely to show an increase of as much as 10 million bushels during the present crop year, as compared with the amount fed in the 1939-40 season. On the other hand the amount of wheat to be used for seed for the 1941 crop is likely to be less than that used in 1940, and will partially offset the increase in the feed item. The combined seed and feed estimates, representing the use of wheat on farms, are not likely to exceed the 57,000,000 bushels indicated in the following tabulation:-

	Bushels
Carry-over on farms, July 31, 1940	14,250,000
1940 crop	525,000,000
Deduct:- Total Farm Supplies	539,250,000
Seed and feed requirements	57,000,000
Deliveries from farms, August 1, 1940-January 10, 1941 ..	290,900,000
Balance for delivery or carry-over on farms	347,900,000
January 10-July 31, 1941	191,350,000

Durum Wheat Production, 1937-1940

Durum wheat is included in the above estimates of wheat production in the Prairie Provinces. Concerning the Durum estimates themselves, a downward revision of 2,000,000 bushels (500,000 in Manitoba and 1,500,000 in Saskatchewan) has been made in the 1940 estimate, which now stands at 8,500,000 bushels. Of this amount, 6,000,000 bushels are in Manitoba and 2,500,000 bushels in Saskatchewan.

The 1939 Durum estimates have been finally revised in the light of disposition data to 10,800,000 bushels, of which 8,500,000 bushels were produced in Manitoba and 2,300,000 in Saskatchewan. The reduction of 500,000 bushels from the third estimate published in January 1940 was entirely in Manitoba.

Comparative production figures for the years 1937 to 1940 are as below:

Year	Manitoba	Saskatchewan	Total
	bu.	bu.	bu.
1937	23,000,000	2,000,000	25,000,000
1938	15,000,000	2,500,000	17,500,000
1939	8,500,000	2,300,000	10,800,000
1940	6,000,000	2,500,000	8,500,000

PRODUCTION OF OTHER GRAINS IN THE PRAIRIE PROVINCES, 1940.

The 1940 oat crop in the Prairie Provinces is estimated at 229,000,000 bushels, which is 2,500,000 bushels less than was produced in 1939. Saskatchewan's 1940 oat crop was less than in 1939, with a smaller acreage sown. Manitoba's oat crop was slightly less than in the previous year. The yield of oats in Alberta was very good in 1940, resulting in a substantial increase in the production for that province.

Barley production in 1940 at 83,000,000 bushels represented a 2,000,000 bushel increase over the 1939 barley crop in the Prairie Provinces. Slight declines in barley production in Manitoba and Saskatchewan were more than offset by an increase in the yield of barley in Alberta. The total rye crop in the Prairie Provinces at 12,250,000 bushels was 1,450,000 bushels less than in 1939. Flaxseed production on the other hand registered a substantial increase from 1,950,000 bushels in 1939 to 2,875,000 bushels in 1940.

1939 CROP ESTIMATES

Final revisions of the 1939 wheat crop estimates have been made for the Prairie Provinces on the basis of disposition data that are now complete. The final 1939 wheat estimates are as follows: Manitoba 61,300,000, Saskatchewan 271,300,000, Alberta 161,400,000, Prairie Provinces 494,000,000 bushels. These estimates and their supporting disposition data are given in the following table:-

Description	Manitoba	Saskatchewan	Alberta	Prairie Provinces
	000 bu.	000 bu.	000 bu.	000 bu.
Supplies:-				
Carry-over on farms, July 31, 1939 ..	561	528	1,716	2,805
Final estimate, 1939 crop	61,300	271,300	161,400	494,000
Total Supplies	61,861	271,828	163,116	496,805
Disposition:-				
Marketings ..				
Primary receipts at country elevators	46,355	237,894	131,732	415,981
Primary receipts at interior private and mill elevators	617	756	1,316	2,689
Platform loadings	5,237	724	3,339	9,300
Total Marketings	52,209	239,374	136,387	427,970
Seed	5,163	18,062	11,094	34,319
Feed	3,024	7,499	7,988	18,511
Country Millings	465	643	647	1,755
Carry-over on farms, July 31, 1940	1,000	6,250	7,000	14,250
Total Disposition	61,861	271,828	163,116	496,805

In previous years the marketings shown in the above table included only the primary receipts at country elevators and the platform loadings. In addition to these deliveries from farms, there is also a certain amount of wheat delivered each year from farms direct to interior private and mill elevators. These latter primary receipts are accounted for and included for the first time in the disposition data, as shown above. On the other hand, the "unmerchantable" item included in this table in earlier years has been amalgamated with the "feed" item and is no longer compiled separately.

The final estimate of the 1939 flaxseed production in the Prairie Provinces is placed at 1,950,000 bushels, in light of the marketing and seed data associated with the disposition of the 1939 crop. This final figure is 125,000 bushels lower than the third estimate issued last January. Reductions in the estimates for Manitoba and Alberta, and an increase in the Saskatchewan estimate place the final figures by provinces as follows: Manitoba 425,000, Saskatchewan 1,250,000, and Alberta 275,000 bushels. Because of the reduction in the Alberta production figure, the acreage estimate was also revised downward from 40,000 to 31,000 acres.

No revisions have been made in the January 1940 estimates of the remaining crops in the Prairie Provinces.

GRADING AND QUALITY OF THE 1940 WHEAT CROP

The 1940 wheat crop in the Prairie Provinces is another exceptionally high grading crop, following the record set by the crop of the previous year. This year's grades are just a shade under those of 1939. Over 57 per cent of the wheat graded in the August-December period of 1940 has been designated No. 1 Northern or No. 1 Hard. During the same period of 1939, 60 per cent of the inspections made the two top grades. The 1940 inspections have included 27 per cent grading No. 2 Northern and over 7 per cent grading No. 3 Northern, so that the total volume of the 1940 crop grading No. 3 Northern or higher amounted to 91.6 per cent, as compared with 91.9 per cent in 1939. The mean protein content of the 1940 crop, as reported by the Grain Research Laboratory of the Board of Grain Commissioners for Canada on November 12, was 14.1 per cent, which was identical with that of the 1939 crop, and comparable to the average protein content of the past twelve crops. The similarity between the 1939 and the 1940 crops is striking, with respect to both grade and protein content.

The dearth of wheat below milling quality delivered from both the 1939 and 1940 crops has made very little wheat of the feed grades available to the live-stock industry. As in 1939, an appreciable quantity of tough wheat due to wet harvesting conditions has been delivered in Alberta, with 5.3 per cent of the total western inspections grading tough in 1940, compared with 4.8 per cent in 1939. Much of the wheat in the tough category would grade No. 2 Northern except for moisture content, and is priced above the feed range.

The 1940 Amber Durum wheat crop is grading similar to that of 1939. The 1940 inspections during August-December show 70.6 per cent in the two top grades, compared with 70.5 per cent in these grades in the same period of 1939. Twenty-four per cent of the inspections in 1940 graded No. 3 Amber Durum, as compared with 20.4 per cent in the No. 3 grade in 1939. The small percentage of Durums entering the tough and rejected grades in 1939 was reduced to negligible proportions in 1940.

DISTRICT YIELD CHARTS IN THE PRAIRIE PROVINCES BY CROP DISTRICTS 1939 AND 1940.

Accompanying this report are two charts showing the average yields per acre of wheat by crop districts for the Prairie Provinces in 1939 and 1940.

Distribution of Crop Districts According to Yield of Wheat per Acre, 1939 and 1940.

Yield per Acre Bushels	Number of Districts							
	Manitoba		Saskatchewan		Alberta		Prairie Provinces	
	1939	1940	1939	1940	1939	1940	1939	1940
9 - 4.0	0	0	0	0	0	0	0	0
4.1 - 8.0	0	0	2	0	0	0	0	0
8.1 - 12.0	0	0	1	1	0	0	2	0
12.1 - 16.0	2	2	6	7	0	0	1	1
16.1 - 20.0	4	6	3	8	3	1	11	10
20.1 - 24.0	5	4	4	2	6	1	13	15
24.1 - 28.0	2	2	1	1	3	9	12	15
28.1 - 32.0	0	0	2	1	5	5	8	8
32.1 - 36.0	1	0	0	0	0	1	2	2
36.1 - 40.0	0	0	1	0	0	0	1	0
Totals	14	14	20	20	17	17	51	51

Of the 51 crop districts in 1940, only one district reported an average yield per acre as low as 12 bushels, 25 districts reported yields ranging from 12.1 to 20 bushels, and 25 districts reported yields higher than 20 bushels. In 1939, 3 districts were below 12 bushels, 24 between 12.1 and 20 bushels, and 24 above 20 bushels. The three low-yielding districts in 1939 were concentrated in south-eastern Saskatchewan. The one district at 12 bushels in 1940 was in the south-western corner of the same province.

Manitoba

Districts 1 and 2 in the south-west and south-centre reported better yields in 1940 than in 1939. Similarly districts 4, 5 and 6 around and east of Winnipeg had better yields in 1940. Crop districts 3, 7, and 8 in the centre and west-centre harvested slightly lower yields this year, while all the northern and north-western districts suffered lower yields than in 1939.

Saskatchewan

All south-eastern and south-central districts, including Districts 1A, 1B, 2A, 2B, 3AS and 3AN, fared better in 1940 than in 1939. Elsewhere in the province improvements in yields over those of 1939 were exceptional with only three Districts 4B, 7A and 9B having better yields in 1940 than in the previous year. These latter districts are along the Alberta boundary. The central, north-central and north-eastern districts all experienced poorer yields per acre in 1940. Notwithstanding, there were no areas of general crop failure such as have occurred in previous years. The poorest district in the province was 4A where there was heavy loss of stubble crops due to grasshopper damage.

Alberta

The Alberta district yields per acre were almost uniformly better in 1940 than in 1939. Only District 8 in the centre and Districts 13 and 14 in the north and north-east failed to register gains over the 1939 yields. Even in these districts the yields were quite good. The 1940 season stands out as being generally favourable for the province.

GRAIN PRODUCTION IN CANADA

The third estimate of the production of grain crops in Canada is, in bushels, as follows, with the 1939 production within brackets: Wheat 551,390,000 (520,623,000); oats 380,526,000 (384,407,000); barley 104,256,000 (103,147,000); rye 13,994,000 (15,307,000); flaxseed 3,189,000 (2,044,000); peas 1,355,000 (1,307,000); beans 1,477,000 (1,527,000); buckwheat 6,692,000 (6,848,000); mixed grains 43,133,000 (44,072,000); corn for husking 6,956,000 (8,097,000).

Corresponding yields per acre, in bushels, are as follows: Wheat 19.2 (19.5); oats 30.9 (30.1); barley 24.0 (23.7); rye 13.5 (13.9); flaxseed 8.0 (6.9); peas 16.6 (17.2); beans 15.3 (20.9); buckwheat 20.5 (20.4); mixed grains 35.4 (36.2); corn for husking 37.4 (44.2).

GRAIN PRODUCTION IN THE PRAIRIE PROVINCES

The production of grain in the Prairie Provinces in 1940 is now estimated, in bushels, as follows, with the 1939 figures within brackets: Three provinces - Wheat 525,000,000 (494,000,000); oats 229,000,000 (231,500,000); barley 83,000,000 (81,000,000); rye 12,250,000 (13,700,000); flaxseed 2,875,000 (1,950,000). Manitoba - Wheat 66,000,000 (61,300,000); oats 33,000,000 (34,500,000); barley 27,500,000 (28,000,000); rye 2,250,000 (2,000,000); flaxseed 800,000 (425,000). Saskatchewan - Wheat 272,000,000 (271,300,000); oats 93,000,000 (112,000,000); barley 23,500,000 (26,000,000); rye 7,000,000 (9,300,000); flaxseed 1,650,000 (1,250,000). Alberta - Wheat 187,000,000 (161,400,000); oats 103,000,000 (85,000,000); barley 32,000,000 (27,000,000); rye 3,000,000 (2,400,000); flaxseed 425,000 (275,000).

PRODUCTION OF ROOT AND FODDER CROPS

Root and fodder crop production in Canada in 1940 is now estimated as follows, with the 1939 figures within brackets: Potatoes 42,300,000 cwt. (36,390,000 cwt.); turnips, etc. 39,016,000 cwt. (37,636,000 cwt.); hay and clover 14,070,000 tons (13,377,000 tons); alfalfa 2,588,000 tons (2,167,000 tons); fodder corn 4,155,000 tons (4,514,000 tons); grain hay 1,916,000 tons (1,538,000 tons); sugar beets 830,100 tons (586,000 tons).

VALUE OF FIELD CROPS

The average prices up to December 31 received by growers at the point of production for the 1940 crops are estimated as follows, with the revised prices for 1939 crops within brackets: Cents per bushel - Wheat 51 (54); oats 26 (30); barley 30 (34); rye 30 (42); peas 196 (180); beans 184 (206); buckwheat 54 (60); mixed grains 39 (43); flaxseed 111 (141); corn for husking 55 (55). Cents per cwt. - Potatoes 79 (113); turnips, etc. 32 (38). Dollars per ton - Hay and clover 7.84 (8.40); alfalfa 7.54 (8.70); fodder corn 2.94 (3.03); grain hay 4.27 (4.37); sugar beets 5.56 initial payment (7.54).

The total values of field crops in 1940 are estimated as follows, with the revised figures for 1939 within brackets: Wheat \$283,269,000 (\$282,151,000); oats \$98,800,000 (\$114,843,000); barley \$30,952,000 (\$35,424,000); rye \$4,184,000 (\$6,423,000); peas \$2,652,000 (\$2,350,000); beans \$2,721,000 (\$3,138,000); buckwheat \$3,586,000 (\$4,103,000); mixed grains \$16,919,000 (\$18,917,000); flaxseed \$3,525,000 (\$2,886,000); corn for husking \$3,826,000 (\$4,453,000); potatoes \$33,555,000 (\$41,065,000); turnips, etc. \$12,388,000 (\$14,127,000); hay and clover \$110,287,000 (\$112,305,000); alfalfa \$19,524,000 (\$18,854,000); fodder corn \$12,235,000 (\$13,666,000); grain hay \$3,186,000 (\$6,717,000); sugar beets \$4,619,000 (\$4,417,000).

By provinces the total values are, in order of magnitude, as follows, with revised values for 1939 crops within brackets: Saskatchewan \$172,979,900 (\$190,827,000); Ontario \$140,680,000 (\$156,115,000); Alberta \$133,734,000 (\$126,947,000); Quebec \$89,531,000 (\$92,740,000); Manitoba \$59,800,000 (\$60,283,000); New Brunswick \$18,446,000 (\$20,641,000); British Columbia \$14,421,000 (\$14,343,000); Nova Scotia \$13,347,000 (\$13,145,000); Prince Edward Island \$8,290,000 (\$10,798,000).

The aggregate value of all field crops in Canada in 1940 is now estimated at \$651,228,000 as compared with \$625,839,000 the revised value for 1939.

Table I. - Area, Production and Value of Principal Field Crops in Canada, 1940.

Crops	Area	Yield per acre	Production	Average farm price	Gross Farm Value
	acres	bush.	bush.	\$ per bush.	\$
<u>CANADA</u>					
Fall wheat	775,400	28.5	22,099,000	0.63	13,922,000
Spring wheat	27,950,800	18.9	529,291,000	0.51	269,347,000
All wheat	28,726,200	19.2	551,390,000	0.51	283,269,000
Oats	12,297,600	30.9	380,526,000	0.26	98,800,000
Barley	4,341,500	24.0	104,256,000	0.30	30,952,000
Fall rye	785,600	13.2	10,357,000	0.30	3,143,000
Spring rye	249,300	14.6	3,637,000	0.29	1,041,000
All rye	1,034,900	13.5	13,994,000	0.30	4,184,000
Peas	81,500	16.6	1,355,000	1.96	2,652,000
Beans	96,800	15.3	1,477,000	1.84	2,721,000
Buckwheat	325,700	20.5	6,692,000	0.54	3,586,000
Mixed grains	1,219,900	35.4	43,133,000	0.39	16,919,000
Flaxseed	397,400	8.0	3,189,000	1.11	3,525,000
Corn for husking	186,000	37.4	6,956,000	0.55	3,826,000
		cwt.	cwt.	per cwt.	
Potatoes	545,000	78.0	42,300,000	0.79	33,555,000
Turnips, etc.	186,400	209.0	39,016,000	0.32	12,388,000
		tons	tons	per ton	
Hay and clover	8,811,200	1.60	14,070,000	7.84	110,287,000
Alfalfa	1,031,700	2.51	2,588,000	7.54	19,524,000
Fodder corn	496,200	8.37	4,155,000	2.94	12,235,000
Grain hay	1,051,600	1.82	1,916,000	4.27	8,186,000
Sugar beets	77,900	10.66	830,100	5.56 1/	4,619,000
<u>PRINCE EDWARD ISLAND</u>					
		bush.	bush.	per bush.	
Spring wheat	12,500	19.0	238,000	0.88	209,000
Oats	142,800	35.0	4,998,000	0.30	1,499,000
Barley	13,000	30.5	397,000	0.60	238,000
Buckwheat	3,700	20.0	74,000	0.61	45,000
Mixed grains	43,000	35.0	1,505,000	0.40	602,000
		cwt.	cwt.	per cwt.	
Potatoes	42,400	108.0	4,579,000	0.42	1,923,000
Turnips, etc.	10,800	236.0	2,549,000	0.26	663,000
		tons	tons	per ton	
Hay and clover	236,900	1.45	344,000	9.00	3,096,000
Fodder corn	400	7.50	3,000	5.00	15,000
<u>NOVA SCOTIA</u>					
		bush.	bush.	per bush.	
Spring wheat	2,900	19.0	55,000	1.00	55,000
Oats	90,700	36.0	3,265,000	0.56	1,828,000
Barley	12,100	29.0	351,000	0.75	263,000
Buckwheat	3,800	22.0	84,000	0.80	67,000
Mixed grains	6,000	34.0	204,000	0.65	133,000
		cwt.	cwt.	per cwt.	
Potatoes	22,900	101.0	2,313,000	0.90	2,082,000
Turnips, etc.	11,900	295.0	3,511,000	0.50	1,756,000
		tons	tons	per ton	
Hay and clover	405,600	1.60	649,000	11.00	7,139,000
Fodder corn	800	7.85	6,000	4.00	24,000
<u>NEW BRUNSWICK</u>					
		bush.	bush.	per bush.	
Spring wheat	8,000	22.0	176,000	1.05	185,000
Oats	209,900	31.0	6,507,000	0.50	3,254,000
Barley	18,600	28.0	521,000	0.72	375,000
Beans	1,100	19.0	21,000	2.80	59,000
Buckwheat	26,200	20.5	537,000	0.78	419,000
Mixed grains	4,000	32.0	128,000	0.60	77,000
		cwt.	cwt.	per cwt.	
Potatoes	54,300	127.0	6,896,000	0.50	3,448,000
Turnips, etc.	12,700	263.0	3,340,000	0.35	1,169,000
		tons	tons	per ton	
Hay and clover	572,400	1.65	944,000	10.00	9,440,000
Fodder corn	800	6.00	5,000	4.00	20,000

1/ Initial payment including delivery to factory.

QUEBEC	acres	bush.	bush.	\$ per bush.	\$
Spring wheat	30,100	17.4	522,000	0.91	473,000
Oats	1,664,200	26.6	44,290,000	0.43	19,254,000
Barley	159,500	24.4	3,888,000	0.57	2,219,000
Spring rye	6,200	16.6	103,000	0.82	84,000
Peas	19,700	16.1	318,000	2.50	794,000
Beans	9,200	16.6	153,000	2.45	375,000
Buckwheat	104,500	21.0	2,144,000	0.60	1,278,000
Mixed grains	163,300	27.6	4,502,000	0.53	2,373,000
Flaxseed	15,900	8.8	140,000	2.48	347,000
Potatoes	149,800	cwt.	cwt.	per cwt.	
Turnips, etc.	36,600	87.6	13,125,000	0.79	10,416,000
		163.0	5,975,000	0.41	2,455,000
Hay and clover	3,661,300	tons	tons	per ton	
Alfalfa	22,400	1.43	5,223,000	8.88	46,373,000
Fodder corn	61,300	2.55	57,000	10.84	618,000
		9.00	552,000	4.48	2,472,000
ONTARIO		bush.	bush.	per bush.	
Fall wheat	775,400	28.5	22,099,000	0.63	13,922,000
Spring wheat	69,200	18.8	1,301,000	0.65	846,000
All wheat	844,600	27.7	23,400,000	0.63	14,768,000
Oats	2,254,000	38.4	86,554,000	0.32	27,697,000
Barley	499,000	31.1	15,519,000	0.44	6,828,000
Fall rye	81,500	19.1	1,557,000	0.50	779,000
Peas	55,200	16.2	894,000	1.87	1,672,000
Beans	84,800	14.9	1,264,000	1.75	2,212,000
Buckwheat	182,500	20.8	3,796,000	0.46	1,746,000
Mixed grains	915,000	38.0	34,770,000	0.38	13,213,000
Flaxseed	17,500	9.7	170,000	1.33	226,000
Corn for husking	186,000	37.4	6,956,000	0.55	3,826,000
Potatoes	146,800	cwt.	cwt.	per cwt.	
Turnips, etc.	98,300	46.0	6,753,000	1.11	7,496,000
		219.0	21,528,000	0.24	5,167,000
Hay and clover	2,699,400	tons	tons	per ton	
Alfalfa	715,000	1.86	5,021,000	6.32	31,733,000
Fodder corn	339,000	2.65	1,895,000	7.13	13,511,000
Sugar beets	38,200	9.18	3,112,000	2.41	7,500,000
		10.50	401,000	5.75 1/	2,306,000
MANITOBA		bush.	bush.	per bush.	
Spring wheat	3,512,000	18.8	66,000,000	0.53	34,980,000
Oats	1,293,000	25.5	33,000,000	0.21	6,930,000
Barley	1,256,000	21.9	27,500,000	0.27	7,425,000
Fall rye	132,600	14.3	1,900,000	0.30	570,000
Spring rye	26,700	13.1	350,000	0.30	105,000
All rye	159,300	14.1	2,250,000	0.30	675,000
Peas	1,700	13.8	23,000	1.23	28,000
Buckwheat	5,000	11.3	57,000	0.55	31,000
Mixed grains	25,700	19.5	501,000	0.25	125,000
Flaxseed	89,500	8.9	800,000	1.05	840,000
Potatoes	34,300	cwt.	cwt.	per cwt.	
Turnips, etc.	5,600	52.0	1,784,000	0.90	1,606,000
		78.0	437,000	0.52	227,000
Hay and clover	420,900	tons	tons	per ton	
Alfalfa	104,600	1.38	581,000	6.00	3,486,000
Fodder corn	74,200	1.63	170,000	8.00	1,360,000
Sugar beets	15,800	4.82	358,000	4.50	1,611,000
		6.02	95,100	5.90 1/	476,000
SASKATCHEWAN		bush.	bush.	per bush.	
Spring wheat	15,571,000	17.5	272,000,000	0.52	141,440,000
Oats	3,880,000	24.0	93,000,000	0.19	17,670,000
Barley	1,251,000	18.8	23,500,000	0.24	5,640,000
Fall rye	471,300	11.2	5,300,000	0.26	1,378,000
Spring rye	135,400	12.6	1,700,000	0.26	442,000
All rye	606,700	11.5	7,000,000	0.26	1,820,000
Mixed grains	29,100	18.6	540,000	0.23	124,000
Flaxseed	232,200	7.1	1,650,000	1.02	1,683,000
Potatoes	49,000	cwt.	cwt.	per cwt.	
Turnips, etc.	2,200	52.0	2,548,000	0.85	2,166,000
		81.0	178,000	0.55	98,000
Hay and clover	257,300	tons	tons	per ton	
Alfalfa	30,000	1.31	337,000	5.35	1,803,000
Fodder corn	11,200	1.61	48,000	7.30	350,000
		3.26	37,000	5.00	185,000

1/ Initial payment including delivery to factory.

ALBERTA	acres	bush.	bush.	\$ per bush.	\$
Spring wheat	8,667,000	21.6	187,000,000	0.48	89,760,000
Oats	2,645,000	38.9	103,000,000	0.18	18,540,000
Barley	1,115,000	28.7	32,000,000	0.24	7,680,000
Fall rye	100,200	16.0	1,600,000	0.26	416,000
Spring rye	76,800	18.2	1,400,000	0.26	364,000
All rye	177,000	16.9	3,000,000	0.26	780,000
Peas	1,200	19.2	23,000	1.40	32,000
Beans	600	16.7	10,000	2.00	20,000
Mixed grains	28,900	27.7	800,000	0.23	184,000
Flaxseed	42,000 ^{2/}	10.1	425,000	1.00	425,000
Potatoes	25,500	cwt. 73.0	cwt. 1,862,000	per cwt. 0.80	1,490,000
Turnips, etc.	2,800	95.0	266,000	0.52	138,000
Hay and clover	398,700	tons 1.60	tons 638,000	per ton 5.70	3,637,000
Alfalfa	108,700	2.40	261,000	7.50	1,958,000
Fodder corn	2,400	4.60	11,000	4.80	53,000
Grain hay	1,000,000	1.80	1,800,000	4.00	7,200,000
Sugar beets	23,900	14.00	334,000	5.50 ^{1/}	1,837,000
BRITISH COLUMBIA		bush.	bush.	per bush.	
Spring wheat	78,100	25.6	1,999,000	0.70	1,399,000
Oats	118,000	50.1	5,912,000	0.36	2,128,000
Barley	17,300	33.5	580,000	0.49	284,000
Spring rye	4,200	20.0	84,000	0.55	46,000
Peas	3,700	26.1	97,000	1.30	126,000
Beans	1,100	26.5	29,000	1.90	55,000
Mixed grains	4,900	37.3	183,000	0.48	88,000
Flaxseed	300	12.7	4,000	1.05	4,000
Potatoes	20,000	cwt. 122.0	cwt. 2,440,000	per cwt. 1.20	2,928,000
Turnips, etc.	5,500	224.0	1,232,000	0.58	715,000
Hay and clover	158,700	tons 2.10	tons 333,000	per ton 10.75	3,580,000
Alfalfa	51,000	3.07	157,000	11.00	1,727,000
Fodder corn	6,100	11.66	71,000	5.00	355,000
Grain hay	51,600	2.25	116,000	8.50	986,000

Table II.- Area and Production of Wheat, Oats, Barley, Rye and Flaxseed in the Prairie Provinces, 1938-1940.

	1938	1939	1940	1938	1939	1940
Prairie Provinces	acres	acres	acres	bush.	bush.	bush.
Wheat	24,946,000	25,813,000	27,750,000	336,000,000	494,000,000	525,000,000
Oats	8,518,000	8,227,000	7,818,000	232,000,000	231,500,000	229,000,000
Barley	3,687,000	3,607,000	3,622,000	80,200,000	81,000,000	83,000,000
Rye	655,000	1,014,100	943,000	9,340,000	13,700,000	12,250,000
Flaxseed	201,700	288,500	363,700 ^{2/}	1,185,000	1,950,000	2,875,000
Manitoba						
Wheat	3,184,000	3,201,000	3,512,000	50,000,000	61,300,000	66,000,000
Oats	1,462,000	1,377,000	1,293,000	41,000,000	34,500,000	33,000,000
Barley	1,355,000	1,344,000	1,256,000	31,000,000	28,000,000	27,500,000
Rye	205,000	178,200	159,300	3,240,000	2,000,000	2,250,000
Flaxseed	42,700	70,300	89,500	300,000	425,000	800,000
Saskatchewan						
Wheat	13,793,000	14,233,000	15,571,000	137,800,000	271,300,000	272,000,000
Oats	4,171,000	4,144,000	3,880,000	90,000,000	112,000,000	93,000,000
Barley	1,207,000	1,149,000	1,251,000	20,000,000	26,000,000	23,500,000
Rye	292,000	647,000	606,700	3,400,000	9,300,000	7,000,000
Flaxseed	139,000	187,200	232,200	725,000	1,250,000	1,650,000
Alberta						
Wheat	7,969,000	8,379,000	8,667,000	148,200,000	161,400,000	187,000,000
Oats	2,885,000	2,706,000	2,645,000	101,000,000	85,000,000	103,000,000
Barley	1,125,000	1,114,000	1,115,000	29,200,000	27,000,000	32,000,000
Rye	158,000	188,900	177,000	2,700,000	2,400,000	3,000,000
Flaxseed	20,000	31,000	42,000 ^{2/}	160,000	275,000	425,000

^{1/} Initial payment including delivery to factory.

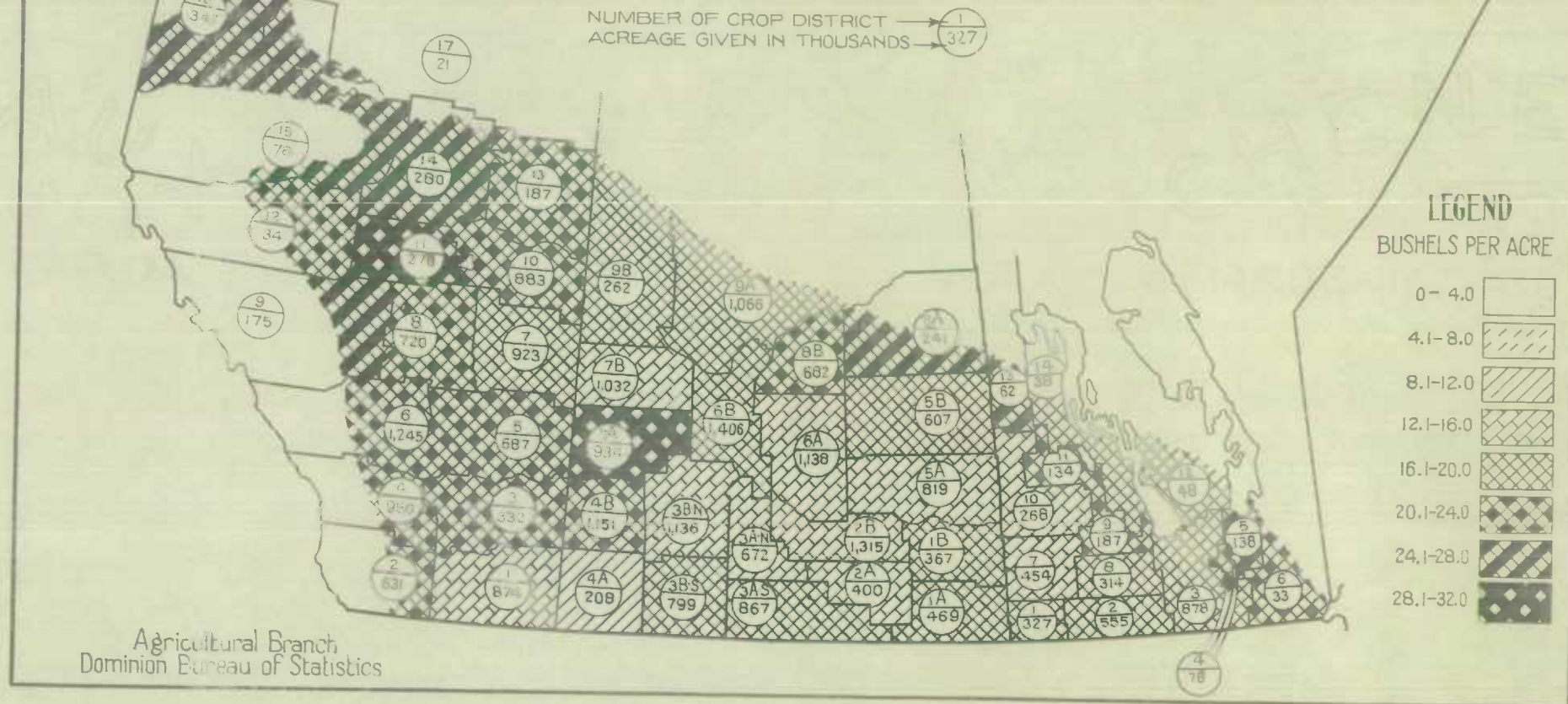
^{2/} Revised.

Table III. - Total Areas and Values of Field Crops, 1938-1940.

Province	1938	1939	1940	1938	1939	1940
	acres	acres	acres	\$	\$	\$
Prince Edward Is.	484,400	479,300	505,500	9,113,000	10,798,000	8,290,000
Nova Scotia	549,200	551,900	556,700	11,129,000	13,145,000	13,347,000
New Brunswick	903,600	901,600	908,000	17,064,000	20,641,000	18,446,000
Quebec	6,103,300	6,142,100	6,104,000	86,477,000	92,740,000	89,531,000
Ontario	9,077,300	9,084,500	9,156,800	131,569,000	156,115,000	140,680,000
Manitoba	6,897,500	6,863,300	6,997,600	54,208,000	60,283,000	59,800,000
Saskatchewan	19,960,300	20,749,200	21,919,700	104,752,000	190,827,000	172,979,000
Alberta	13,582,500	13,942,600	14,233,700	122,148,000	126,947,000	133,734,000
Br. Columbia	501,400	510,100	520,500	13,609,000	14,343,000	14,421,000
CANADA	58,059,500	59,224,600	60,907,500	550,069,000	685,239,000	651,228,000

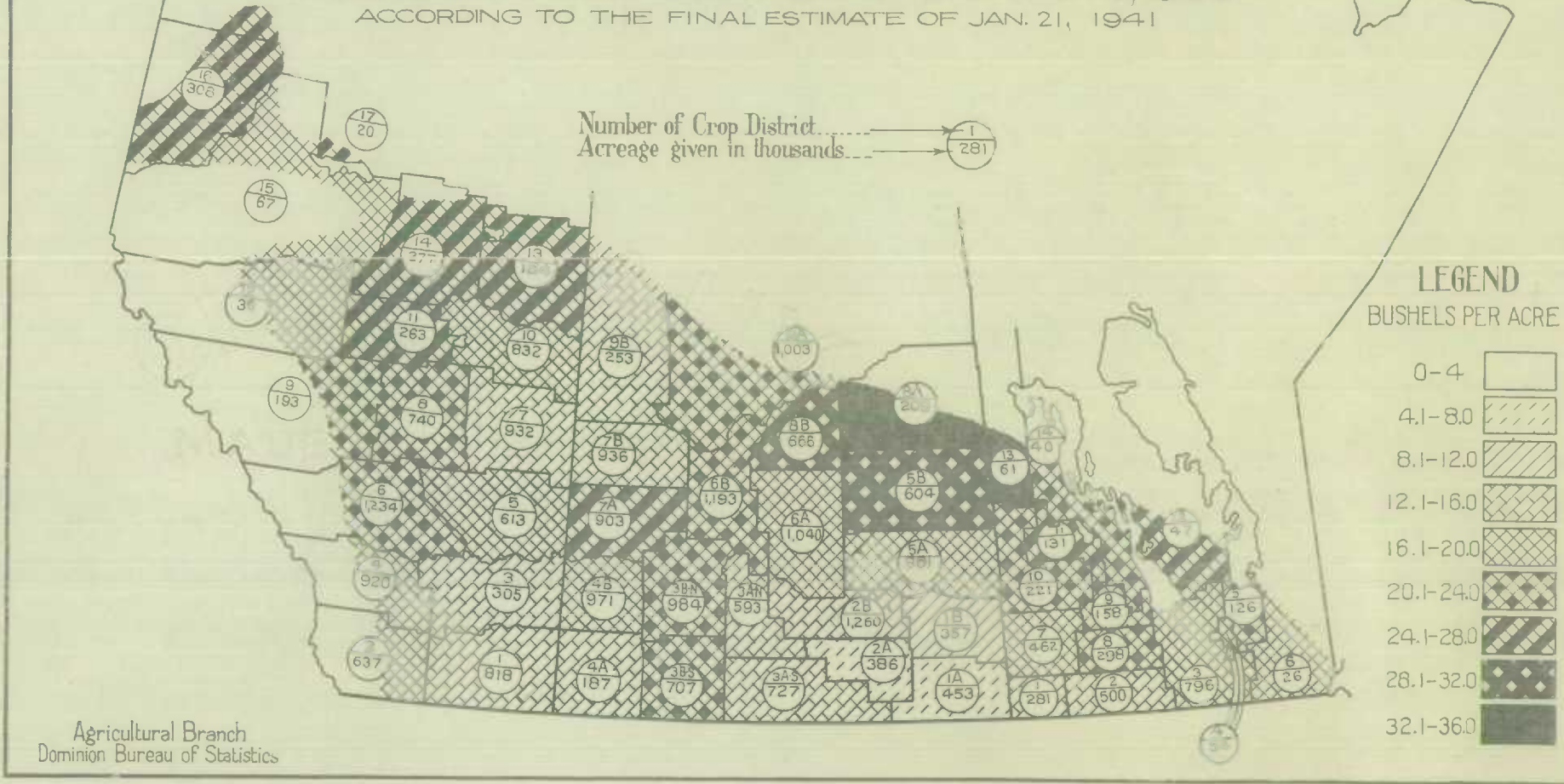
AVERAGE YIELDS PER ACRE OF WHEAT IN THE PRAIRIE PROVINCES BY CROP DISTRICTS, 1940

ACCORDING TO THE THIRD ESTIMATE OF JAN. 21, 1941



AVERAGE YIELDS PER ACRE OF WHEAT IN THE PRAIRIE PROVINCES BY CROP DISTRICTS, 1939

ACCORDING TO THE FINAL ESTIMATE OF JAN. 21, 1941



STATISTICS CANADA / BIBLIOTHÈQUE STATISTIQUE CANADA



1010519787