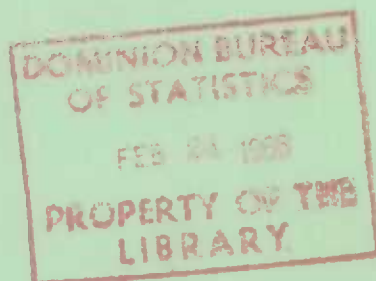


C12



SHIPMENTS OF
FRUIT AND ORNAMENTAL NURSERY STOCK
1964



DOMINION BUREAU OF STATISTICS

Agriculture Division

Crops Section

1900

DOMINION BUREAU OF STATISTICS

Agriculture Division

Crops Section

SHIPMENTS OF
FRUIT AND ORNAMENTAL NURSERY STOCK
1964

Published by Authority of
The Minister of Trade and Commerce

February 1966
5502-571

Price: 75 cents

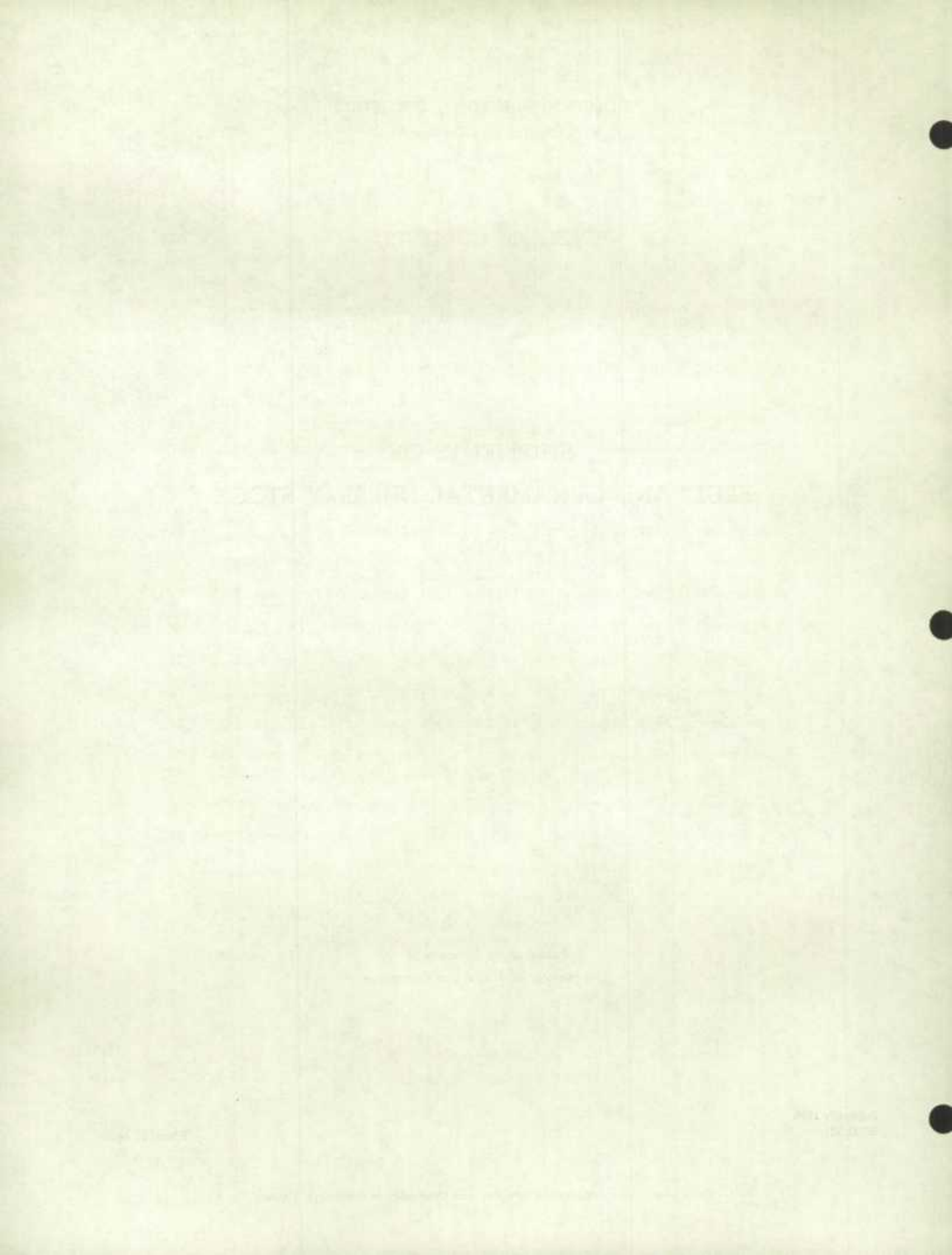
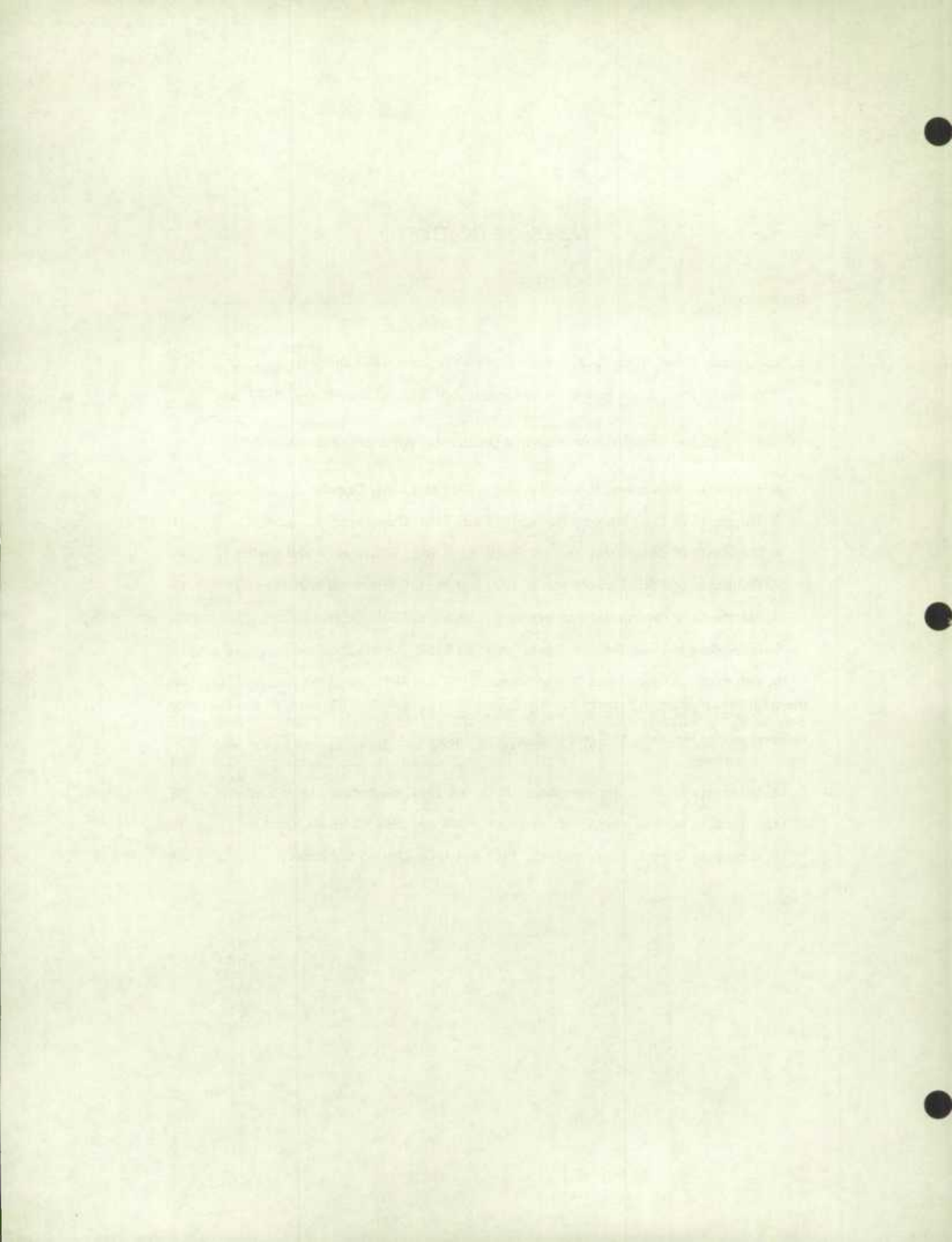


TABLE OF CONTENTS

	Page
Introduction	5
Table	
1. Summary Classification of Nursery Stock Shipments, 1963 and 1964	6
2. Acres of Fruit Stock and Acres of Ornamental Stock, by Provinces, 1963 and 1964	6
3. Proportion of Shipments of Fruit and Ornamental Stock in the Spring and Fall, 1963 and 1964	6
4. Shipments of Ornamental Nursery Stock, 1963 and 1964, Canada	7
5. Shipments of Fruit Nursery Stock, 1963 and 1964, Canada	11
6. Shipments of Ornamental Nursery Stock, 1963 and 1964, Quebec and Maritimes	14
7. Shipments of Fruit Nursery Stock, 1963 and 1964, Quebec and Maritimes	17
8. Shipments of Ornamental Nursery Stock, 1963 and 1964, Ontario	19
9. Shipments of Fruit Nursery Stock, 1963 and 1964, Ontario	23
10. Shipments of Ornamental Nursery Stock, 1963 and 1964, Manitoba	26
11. Shipments of Fruit Nursery Stock, 1963 and 1964, Manitoba	28
12. Shipments of Ornamental Nursery Stock, 1963 and 1964, Saskatchewan and Alberta	30
13. Shipments of Fruit Nursery Stock, 1963 and 1964, Saskatchewan and Alberta	32
14. Shipments of Ornamental Nursery Stock, 1963 and 1964, British Columbia	33
15. Shipments of Fruit Nursery Stock, 1963 and 1964, British Columbia	37



INTRODUCTION

Statistics concerning the nursery stock industry in Canada for the year 1964 are presented in the accompanying tables. This material was compiled from the results of the survey undertaken in 1965 in which questionnaires were sent to all nurseries in Canada asking for a report on the quantities of nursery stock sold during 1964 which the reporting nurseries had propagated themselves, or which they had grown on for 12 months or more. Nursery stock imported for immediate sale, that is for sale without further cultural treatment was also excluded to prevent duplication in reporting. In addition to statistics on quantities sold, information was obtained on the total value of sales at wholesale of ornamental and fruit stock, acreages and the proportion of shipments made in the spring and the fall.

A total of 234 nurseries reported sales of nursery stock in the categories described above for 1964 while for 1963, only 217 had reported. The number of nurseries reporting sales by provinces in 1964 were as follows: Ontario 136, Quebec 30, British Columbia 29, Manitoba 9, Maritime provinces 13, Alberta and Saskatchewan 17. In 1963, there were 123 nurseries reporting in Ontario, 28 in Quebec, 33 in British Columbia, 12 in Manitoba, 8 in the Maritimes and 13 in Saskatchewan and Alberta. As a result of this variation in the number reporting, statistics for 1964 are not entirely comparable with those of 1963.

A summary of the total sales of nursery stock is shown in Table 1 and in Table 11 the total area planted to nursery stock reported by firms submitting reports to the Dominion Bureau of Statistics is indicated. A total of 183 nurseries reported sales of ornamental nursery stock, but only 157 included a report on the value of products sold. Similarly, there were 118 firms with sales of fruit stock items but only 101 of them reported value figures. Table I shows the total figures reported in all cases; thus the value data do not cover all sales of nursery stock reported in the different classes in this table.

TABLE 1. Summary Classification of Nursery Stock Shipments, 1963 and 1964

Classification	One year		Two years and up		Total	
	1963	1964	1963	1964	1963	1964
	number					
Fruit trees, shrubs, plants:						
Apple species	76,929	92,203	182,807	211,424	259,736	303,627
Tender tree fruit species	123,047	83,471	181,833	159,074	304,880	242,545
Small fruit species	—	—	—	—	4,801,390	5,188,499
Other species	—	—	—	—	239,237	218,030
Total value¹					581,059	683,619
	Liners		Other sizes		Other	
	number					
Ornamental species:						
Rose bushes	—	—	—	—	1,566,679	1,416,481
Other ornamental shrubs	101,541	35,196	488,747	2,231,359	590,288	2,266,555
Deciduous trees	483,092	181,566	2,925,037	5,953,848	3,408,129	6,135,414
Evergreen trees	594,979	462,450	893,832	1,065,274	1,488,811	1,527,724
Ornamental climbers	3,283	497	57,006	69,074	50,289	69,571
Hybrid teas on standards (Roses)	—	—	—	—	25,394	8,063
Total value²					4,225,891	4,886,103

¹ Represents value of sales at wholesale reported by 101 firms out of 118 reporting sales of fruit nursery stock.

² Represents value of sales at wholesale reported by 157 firms out of 183 reporting sales of ornamental nursery stock.

TABLE 2. Acres of Fruit Stock and Acres of Ornamental Stock, by Provinces, 1963 and 1964

	Fruit species		Ornamental species	
	1963	1964	1963	1964
	acres			
Quebec ¹	23.7	2,306.7	322.5	308.3
Ontario	2,311.0	457.3	2,526.2	2,949.0
Manitoba	39.8	35.1	182.8	168.0
Saskatchewan and Alberta	37.5	33.2	362.2	590.8
British Columbia	70.2	63.0	1,531.0	210.5
Canada	2,482.2	2,895.3	4,924.7	4,226.6

¹ Includes Maritimes.

TABLE 3. Proportion of Shipments of Fruit and Ornamental Stock in the Spring and Fall, 1963 and 1964

Province of origin	Fruit stock				Ornamental stock			
	Fall		Spring		Fall		Spring	
	1963	1964	1963	1964	1963	1964	1963	1964
	percentage							
Quebec ¹	17.4	12.2	82.6	87.8	24.1	28.0	75.9	72.0
Ontario	17.6	20.5	82.4	79.5	29.2	28.7	70.8	71.3
Manitoba	17.6	18.3	82.4	81.7	29.0	23.0	71.0	77.0
Saskatchewan and Alberta	11.1	8.8	88.9	91.2	10.0	10.7	90.0	89.3
British Columbia	21.9	20.7	78.1	79.3	30.4	28.8	69.6	71.2
Canada	17.5	17.5	82.5	82.5	27.2	26.8	72.8	73.2

¹ Includes Maritimes.

TABLE 4. Shipments of Ornamental Nursery Stock, 1963 and 1964
CANADA

Description	Liners		Other sizes	
	1963	1964	1963	1964
	number			
Coniferous evergreens				
Abies	729	1,905	1,568	824
Cedrus Atlantica	—	25	126	318
Cedrus Deodora	400	510	641	529
Cedrus (other)	340	—	475	450
Chamaecyparis (Cypress)	—	—	—	—
Chamaecyparis Lawsoniana (upright varieties)	6,115	9,872	12,302	12,301
Chamaecyparis Lawsoniana (dwarf or low varieties)	271	1,150	1,727	685
Chamaecyparis Obtusa (upright varieties)	100	56	749	433
Chamaecyparis Obtusa (dwarf or low varieties)	—	1	562	689
Chamaecyparis Pisifera (upright varieties)	525	500	2,970	2,796
Chamaecyparis Pisifera (dwarf or low varieties)	—	2,500	817	3,199
Chamaecyparis (other)	—	3	280	279
Juniperus Pfitzeriana	14,306	8,534	40,482	37,428
Juniperus Pfitzeriana Aurea	11,625	9,923	23,216	25,412
Juniperus Suecica	405	610	11,269	6,581
Juniperus Excelsa Stricta	3,445	3,600	13,539	9,697
Juniperus Hetzi	6,954	5,901	28,455	24,166
Juniperus Mountbatten	3,010	8,980	13,297	12,268
Juniperus Obelisk	150	255	1,971	2,558
Juniperus Keteleeri	200	130	1,831	2,251
Juniperus Sabina	7,981	7,407	45,553	41,378
Juniperus Tamariscifolia	4,600	5,155	13,217	12,208
Juniperus Andorra	5,447	4,095	16,512	15,378
Juniperus Squamata Meyerl	1,870	2,079	7,791	8,850
Juniperus Virginiana	1,190	64	2,931	2,231
Juniperus Virginiana Cannaerti	955	2,415	6,016	6,991
Juniperus Virginiana Glauca	570	980	4,779	4,799
Juniperus Hill's Dundee	760	905	4,032	3,473
Juniperus Pseudocupressus	—	—	530	356
Juniperus Burki	1,600	957	4,658	2,778
Juniperus (other)	8,260	4,924	27,692	37,869
Picea (Norway Spruce)	5,300	2,780	16,709	13,578
Picea (White Spruce)	154,025	97,470	8,707	8,250
Picea (Colorado Blue)	25,860	22,501	15,523	86,816
Picea (Dwarf variety)	1,281	475	8,169	7,615
Picea Kosteri	170	87	7,028	6,187
Picea (other)	75	2,325	7,327	37,321
Pinus Mugho	75,629	93,446	26,421	27,664
Pinus (other)	142,224	12,979	14,504	20,220
Pseudotsuga	1,025	946	1,657	2,352
Taxus Cuspidata (upright)	40,021	81,660	38,152	46,743
Taxus (yew) Cusp. (spreading)	430	255	17,897	19,252
Taxus Media, Hicksi	4,171	4,852	18,501	25,832
Taxus (other)	796	600	16,767	25,704
Thuja Elegantissima	15	100	666	1,242
Thuja Little Gem	300	415	5,250	1,768
Thuja Pyramidalis	10,946	24,340	54,482	57,006
Thuja Pyr. Rosenthali	1,425	175	11,117	12,800
Thuja Umbraculifera	100	—	724	1,968
Thuja Wareana	1,080	550	5,776	4,775
Thuja Woodwardi	965	1,710	13,683	11,310
Thuja (other)	6,560	9,263	45,425	23,630
Tsuga (Hemlock)	—	150	1,643	2,003
Others	696	94	2,925	73,906
Totals	554,902	440,609	629,041	797,117
Grand totals			1,183,943	1,237,726

TABLE 4. Shipments of Ornamental Nursery Stock, 1963 and 1964
CANADA - Continued

Description	Liners		Other sizes	
	1963	1964	1963	1964
	number			
Deciduous shrubs				
Abelia	-	-	52	235
Aithea (Hibiscus)	-	-	4,675	668
Althea (Rose of Sharon)	-	-	5,190	7,999
Amorpha	-	-	125	223
Amygdalus	-	-	2,776	8,899
Azaleas	-	1,200	4,031	4,564
Berberis Thumbergi	14,311	2,002	71,154	65,862
Berberis T. Atrop.	32,365	1,400	206,906	165,893
Berberis (other)	1,580	200	67,912	19,541
Buddleia	-	-	12,654	10,134
Calycanthus	-	-	5	81
Calycarpa	-	-	-	135
Caragana	27,310	58,580	82,795	3,131,424
Caryopteris	16,617	-	4,629	3,943
Chaenomeles (Cydonia)	4,160	1	11,652	13,590
Cornus Elegantissima	460	35	30,373	29,565
Cornus (other)	2,740	100	12,363	14,764
Corylus	-	-	5,406	861
Cotoneaster	13,945	29,437	174,923	195,511
Deutzia	70	-	6,613	7,613
Erica (Heather)	600	813	31,449	27,402
Forsythia	2,655	50	39,276	33,807
Halesia	-	3,288	119	54
Hydrangea Arb. Ster.	50	40	25,363	17,230
Hydrangea P.G.	365	185	34,821	39,020
Hydrangea (other)	50	-	4,125	5,847
Hypericum	8,000	2,000	1,920	4,277
Kalmia	-	-	348	355
Kerria	1,000	-	4,094	2,651
Kolkwitzia	90	-	6,641	7,852
Laburnum	-	-	1,024	779
Lavendula (Lavender)	-	-	2,540	6,306
Ligustrum Amurense	13,827	-	415,649	367,033
Ligustrum (other)	2,805	1,225	158,899	116,685
Lonicera	21,479	14,623	262,995	300,198
Philadelphus Cor. Aurea	6,110	20	42,366	48,955
Philadelphus Virg.	3,795	-	36,542	30,401
Philadelphus (other)	1,130	27	35,922	33,709
Physocarpus	20	215	23,814	9,182
Potentilla	4,140	416	34,969	35,220
Prunus (variety)	25,900	5,400	54,294	46,509
Rhodotypos	-	-	612	678
Rhus	-	300	17,794	23,864
Ribes	8,950	2,730	75,033	104,945
Robinia	-	260	440	698
Sambucus	150	5,135	23,726	23,555
Spirea Anthony Waterer	625	-	18,960	16,308
Spirea Froebeli	2,200	-	20,996	21,045
Spirea Van Houttei	4,170	2,500	97,614	103,389
Spirea (other)	580	-	28,616	28,361
Syringa	10,125	6,588	63,820	68,291
Tamarix	2,350	-	14,485	12,008
Ulmus (Chinese Elm)	235,727	40,545	436,071	521,286
Viburnum	4,695	200	22,572	28,292
Weigelia	831	51	32,272	28,605
Others	7,115	2,000	150,622	157,546
Totals	483,092	181,566	2,925,037	5,953,848
Grand totals			3,408,129	6,135,414

TABLE 4. Shipments of Ornamental Nursery Stock, 1963 and 1964
CANADA— Continued

Description	Seedlings and liners		Other sizes	
	1963	1964	1963	1964
	number			
Ornamental trees				
Acer Platanoides	1,090	—	23,143	20,256
Acer Schwedleri	80	—	6,440	6,727
Acer Crimson King	25	—	12,094	14,333
Acer Palmatum (variety)	6,388	—	1,194	4,457
Acer (Silver Maple)	55	92	28,981	24,720
Acer (Sugar Maple)	500	—	4,772	6,283
Acer Weirii	—	—	337	313
Acer Negundo	—	42	2,866	178,483
Acer (other)	100	700	4,896	7,897
Betula (White Birch)	9,585	—	35,003	37,044
Betula Laciniata (C.L.W.B.)	15	—	13,032	19,477
Betula (other)	—	—	3,134	4,506
Catalpa Speciosa	20	—	3,516	4,094
Catalpa Bungei	121	—	2,467	2,887
Cercidiphyllum (Katsura T)	—	—	289	659
Cercis (Judas Tree)	—	—	169	321
Crataegus	900	600	5,231	5,683
Fagus (Beech)	1	—	1,124	2,650
Fraxinus (Ash)	4,036	4,225	22,078	541,763
Ginkgo Biloba	15	—	1,016	881
Gleditsia (Honey Locust)	3,575	—	11,456	7,315
Juglans	—	—	187	269
Liriodendron (Tulip Tree)	—	—	617	385
Magnolia	17	—	1,258	1,813
Malus	30,520	1,500	51,865	49,987
Morus (Mulberry)	500	—	1,078	1,264
Platanus	745	—	3,265	2,314
Populus (Carolina)	2,095	—	14,141	10,004
Populus (Lombardy)	2,525	—	61,816	70,170
Populus (other)	4,263	8,000	24,133	170,165
Prunus	4,225	—	21,476	16,186
Quercus (Oak)	770	103	2,163	2,347
Salix (Golden W. Willow)	7,136	7,034	28,836	210,870
Sorbus (Mountain Ash)	4,990	700	33,082	34,825
Tilia Basswood	5,674	—	10,522	13,485
Ulmus (Chinese Elm)	11,025	12,200	7,532	19,123
Ulmus (Elm)	—	—	9,563	318,611
Others	550	—	33,975	418,792
Totals	101,541	35,196	488,747	2,231,359
Grand totals			590,288	2,266,555
Broad-leaved evergreens				
Andromeda (Pieris)	—	—	1,639	1,494
Azaleas	4,100	—	4,387	8,608
Berberis	—	32	2,152	3,298
Buxus	14,238	9,615	27,667	27,581
Cotoneaster	—	1,500	13,500	2,603
Daphne	50	66	2,720	2,547
Euonymus	4,060	45	20,020	27,950
Hedera	—	4,000	2,759	4,687

**TABLE 4. Shipments Ornamental Nursery Stock, 1963 and 1964
CANADA - Concluded**

Description	Seedlings and liners		Other sizes	
	1963	1964	1963	1964
	number			
Broad-leaved evergreens - Concluded				
Ilex	500	—	814	1,099
Mahonia	1,150	—	3,368	3,841
Pachistima	70	281	3,445	9,271
Pachysandra	5,600	2,000	41,964	51,588
Pieris	—	—	283	267
Pyracantha	101	4	1,442	2,002
Rhododendron	2,003	2	4,870	4,262
Viburnum	—	—	1,207	1,056
Vinca	7,550	3,500	63,652	104,373
Yucca	—	1	6,157	10,257
Others	655	795	62,745	1,373
Totals	40,077	21,841	264,791	268,157
Grand totals			304,868	289,998
Vines and creepers				
Ampelopsis	200	—	15,404	27,017
Aristolochia	—	—	1,227	1,222
Bignonia	—	—	463	275
Celastrus	3,080	100	3,650	12,053
Clematis	3	—	15,308	14,196
Hedera	—	—	6,127	1,755
Lonicera	—	141	6,256	6,313
Polygonum	—	—	3,025	2,750
Wistaria	—	1	974	1,136
Others	—	255	4,572	2,357
Totals	3,283	497	57,006	69,074
Grand totals			60,289	69,571
Roses (shrub or bush)				
Climbers			241,898	191,222
Hybrid Teas			706,844	652,204
Multifloras			141,314	123,868
Perpetuals			9,687	7,892
Polyanthas and Floribundas			370,777	346,190
Rugosas and Briars			71,051	67,341
Others			25,108	27,764
Totals			1,566,679	1,416,481
Roses (on standards)				
Hybrid Teas			25,394	8,093
Totals			25,394	8,093

TABLE 5. Shipments of Fruit Nursery Stock, 1963 and 1964
CANADA

Description	One year		Two years and up	
	1963	1964	1963	1964
	number			
Apple trees on seedling rootstocks				
Delicious Red	2,655	1,207	8,368	6,469
Delicious Golden	242	339	945	1,301
Melba and Red Sport	—	10	5,304	5,530
McIntosh Red	5,525	7,082	24,615	25,536
Spartan	2,000	1,550	185	1,500
Spy	—	116	3,510	3,201
Winesap	—	—	204	53
Yellow Transparent	445	685	4,856	3,526
Others	9,135	5,288	20,421	24,708
Totals	20,002	16,277	68,408	71,824
Grand totals			88,410	88,101
Apple trees on rootstock East Malling I and East Malling II				
Delicious Red	3,114	1,504	1,722	3,174
Delicious Golden	1,731	300	261	2,345
McIntosh Red	5,623	1,619	2,287	5,790
Melba and Red Sport	—	—	1,360	300
Spartan	4,700	390	190	3,200
Spy	250	—	600	1,916
Winesap	75	—	5	178
Yellow Transparent	—	—	445	808
Others	1,909	214	3,905	2,334
Totals	17,402	4,027	10,765	20,045
Grand totals			28,167	24,072
Apple trees on rootstock East Malling VII				
Delicious Red	1,115	2,670	5,342	4,403
Delicious Golden	4,354	3,659	1,341	782
McIntosh Red	2,292	3,514	4,657	8,388
Melba and Red Sport	500	—	1,010	1,311
Spartan	7,800	200	185	2,210
Spy	—	664	3,861	1,368
Winesap	—	—	15	23
Yellow Transparent	195	—	1,645	1,164
Others	6,453	6,100	57,185	6,209
Totals	22,709	16,807	75,241	25,498
Grand totals			97,950	42,305
Apple trees on rootstock East Malling IX				
Delicious Red	368	575	2,075	2,243
Delicious Golden	390	400	2,545	910
McIntosh Red	342	2,072	7,549	10,262
Melba and Red Sport	15	—	1,439	1,385
Spartan	283	20	50	865
Spy	—	300	2,299	1,812
Winesap	—	—	—	55
Yellow Transparent	90	53	2,025	1,982
Others	—	—	1,687	801
Totals	1,488	3,420	19,669	20,315
Grand totals			21,157	23,735

TABLE 5. Shipments of Fruit Nursery Stock, 1963 and 1964
CANADA - Continued

Description	One year		Two years and up	
	1963	1964	1963	1964
	number			
Apple trees on Malus Robusta No. 5				
McIntosh Red.....	—	43	2,975	1,824
Others.....	—	1,793	800	50
Totals.....	—	1,836	3,775	1,874
Grand totals.....			3,775	3,710
Apple trees on other rootstock				
Totals.....	15,478	49,836	5,071	71,868
Grand totals.....			20,549	121,704
Pear trees				
Bartlett.....	8,237	3,904	13,260	15,490
Anjou.....	2,867	638	1,783	1,682
Others.....	4,542	4,044	13,942	13,037
Totals.....	15,646	8,586	28,985	30,209
Grand totals.....			44,631	38,795
Plum trees				
Early Golden.....	1,838	1,595	2,623	4,011
Early Italian.....	1,580	290	309	2,267
Italian Prune.....	2,460	1,904	3,835	4,530
Stanley Prune.....	1,666	941	3,117	3,343
Others.....	5,904	5,161	9,841	10,504
Totals.....	13,448	9,891	19,725	24,655
Grand totals.....			33,173	34,546
Peach trees				
Elberta.....	8,063	7,028	1,524	6,899
Golden Jubilee.....	11,030	8,838	2,797	11,787
Red Haven.....	10,042	4,247	2,878	12,247
Veteran and other var.....	38,698	27,276	93,171	28,724
Totals.....	67,833	47,389	100,370	59,657
Grand totals.....			168,203	107,046
Cherry trees				
Bing.....	2,765	1,473	3,088	3,780
Black Tartarian.....	345	20	1,612	2,766
Lambert.....	1,451	450	928	672
Montmorency.....	10,491	6,545	7,745	11,087
Sam.....	615	86	300	361
Van.....	1,209	474	836	1,863
Others.....	6,533	5,534	10,823	15,078
Totals.....	23,409	14,582	25,332	35,607
Grand totals.....			48,741	50,189

TABLE 5. Shipments of Fruit Nursery Stock, 1963 and 1964
CANADA - Concluded

Description	One year		Two years and up	
	1963	1964	1963	1964
	number			
Nectarine trees	700	540	2	549
Apricot trees	1,626	2,063	3,852	3,602
Quince trees	-	-	57	47
Dwarf pear trees	385	420	3,510	4,748
Nut trees				
Chestnut	-	50	329	74
Filbert	140	-	1,169	380
Walnut (English)	16	5	179	325
Others	472	40	300	341
Totals	628	95	1,977	1,120
Grand totals			2,605	1,215
Red raspberries				
Latham			242,632	278,916
Newburg			336,063	150,255
Viking			154,746	112,750
Others			227,148	365,383
Totals			960,589	907,304
Grand totals			960,589	907,304
Other small fruit species and miscellaneous				
Black raspberries			32,276	18,420
Purple raspberries			29,996	26,315
Blackberry bushes			17,408	11,090
Gooseberry bushes			13,843	16,307
Black currant bushes			20,332	18,729
Red currant bushes			14,818	15,546
Boysenberry bushes			950	531
Loganberry bushes			5	40
Other berry bushes			8,255	157,464
Strawberry plants			3,314,358	4,356,382
Asparagus roots			231,760	212,565
Horseradish roots			4,872	4,250
Rhubarb roots			144,493	132,162
Grape vines				
Concord			40,526	63,719
Niagara			47,139	43,713
Agawam			18,797	34,896
Elvira			27,326	45,240
Delaware			5,255	17,215
Dutchess			8,000	12,700
Catawba			2,000	12,200
Fredonia			16,483	10,376
Van Buren			5,010	6,334
Buffalo			1,065	1,467
Seibel 10878			20,040	42,400
Seibel 9110			5,000	11,205
Other French Hybrids			15,405	60,256
Others			32,020	73,792
Totals			244,066	435,513
Grand totals			244,066	435,513

**TABLE 6. Shipments of Ornamental Nursery Stock, 1963 and 1964
QUEBEC and MARITIMES**

Description	Liners		Other sizes	
	1963	1964	1963	1964
	number			
Coniferous evergreens				
Abies	—	—	14	28
Cedrus Atlantica	340	—	420	95
Chamaecyparis Lawsoniana (upright varieties)	—	—	5	5
Chamaecyparis Lawsoniana (dwarf or low varieties)	—	—	—	50
Chamaecyparis Obtusa (upright varieties)	—	—	—	—
Chamaecyparis Pisifera (upright varieties)	—	—	64	124
Chamaecyparis Pisifera (dwarf or low varieties)	—	—	60	22
Chamaecyparis (others)	—	—	—	—
Juniperus Pfitzeriana	250	269	1, 293	1, 239
Juniperus Pfitzeriana Aurea	100	225	1, 082	1, 120
Juniperus Suecica	100	400	1, 341	953
Juniperus Excelsa Stricta	100	—	235	229
Juniperus Hetzi	275	50	450	530
Juniperus Keteleeri	—	—	—	10
Juniperus Mountbatten	—	—	267	86
Juniperus Sabina	915	1, 271	5, 991	4, 902
Juniperus Tamariscifolia	100	15	705	787
Juniperus Andorra	475	200	3, 447	1, 238
Juniperus Squamata Meyeri	225	20	597	626
Juniperus Virginiana	150	—	60	45
Juniperus Hill's Dundee	—	—	13	95
Juniperus Obelisk	—	—	—	18
Juniperus Virginiana Canaerti	—	28	45	105
Juniperus Virginiana Glauca	115	—	37	137
Juniperus Burki	50	20	21	31
Juniperus (other)	200	1, 000	2, 613	5, 305
Picea (Norway Spruce)	100	410	7, 195	5, 100
Picea (White spruce)	136, 675	89, 200	894	415
Picea (Colorado Blue)	—	45	1, 770	873
Picea (dwarf variety)	70	—	359	519
Picea Kosteri	—	10	1, 107	647
Picea (other)	75	—	1, 679	729
Pinus Mugho	70, 434	25, 150	6, 723	2, 989
Pinus (other)	18, 174	6, 673	2, 754	1, 795
Pseudotsuga	—	—	6	1, 025
Taxus Cuspidata (upright)	275	14	1, 402	1, 116
Taxus (Yew) Cusp. (spreading)	100	5	1, 510	778
Taxus Cusp. Hicksi	—	—	460	466
Taxus (other)	100	—	626	314
Thuja Elegantissima	—	—	150	177
Thuja Little Gem	—	—	458	144
Thuja Pyramidalis	385	1, 725	5, 401	5, 958
Thuja Pyr. Rosenthali	250	25	3, 490	3, 470
Thuja Umbraculifera	—	—	—	20
Thuja Warreana	100	70	874	195
Thuja Woodwardi	100	225	2, 982	2, 848
Thuja (other)	200	3, 635	2, 066	1, 320
Tsuga (Hemlock)	—	—	110	21
Others	496	4	—	1, 390
Totals	230, 929	130, 689	60, 776	50, 089
Grand totals			291, 705	180, 778
Roses (shrub or bush)				
Climbers			950	3, 810
Hybrid Teas			5, 390	5, 000
Multifloras			1, 100	1, 750
Perpetuals			650	1, 525
Polyanthas and Floribundas			14, 625	14, 334
Rugosas and Briars			2, 928	2, 560
Others			1, 500	606
Totals			27, 143	29, 585
Roses (on standards)				
Hybrid Teas			—	30
Total			—	30

TABLE 6. Shipments of Ornamental Nursery Stock, 1963 and 1964
 QUEBEC and MARITIMES - Continued

Description	Liners		Other sizes	
	1963	1964	1963	1964
	number			
Deciduous shrubs				
Althea	-	-	10	-
Azaleas	-	-	64	36
Berberis Thumbergi	5,321	2,000	7,165	5,514
Berberis T. Atrop.	2,300	1,400	32,385	8,890
Berberis (other)	-	-	1,284	200
Buddleia	-	-	13	150
Calycanthus	-	-	-	-
Caragana	1,000	10,000	8,070	7,056
Carypteris	16,617	-	1,200	1,600
Chaenomeles (Cydonia)	-	-	267	1,291
Cornus Elegantissima	65	35	2,804	1,197
Cornus (other)	-	-	913	554
Corylus	-	-	5,025	10
Cotoneaster	70	-	7,055	11,126
Deutzia	-	-	239	317
Erica (Heather)	-	-	56	362
Forsythia	-	50	1,061	515
Halesia	-	-	-	-
Hydrangea Arb. Ster.	-	40	2,450	2,800
Hydrangea P.G.	110	135	5,149	4,650
Hydrangea (other)	-	-	1,840	348
Kalmia	-	-	24	13
Kerria	-	-	70	25
Kolkwitzia	-	-	111	162
Laburnum	-	-	38	81
Lavendula (Lavender)	-	-	-	-
Ligustrum Amurense	2,000	-	5,470	3,375
Ligustrum (other)	-	1,225	8,074	2,510
Lonicera	7,854	12,000	60,520	45,467
Philadelphus Cor. Aurea	50	20	3,796	6,388
Philadelphus Virg.	35	-	6,864	4,527
Philadelphus (other)	-	25	1,855	619
Physocarpus	20	215	426	2,507
Potentilla	20	20	4,136	2,434
Prunus (variety)	-	-	2,665	1,512
Rhodotypos	-	-	10	50
Rhus	-	-	15,111	19,988
Ribes	1,500	2,000	21,564	32,017
Robinia	-	10	133	111
Sambucus	-	35	457	625
Spiraea Anthony Waterer	-	-	1,484	1,134
Spiraea Froebeli	-	-	373	844
Spiraea Van Houttei	1,560	2,500	13,820	24,494
Spiraea (other)	-	-	1,661	1,552
Syringa	-	-	5,001	2,074
Tamarix	-	-	2,648	247
Ulmus (Chinese Elm)	36,000	13,000	25,160	36,500
Viburnum	-	-	1,386	1,195
Weigelia	-	50	1,865	1,981
Others	-	-	1,027	10,189
Totals	74,522	44,760	262,799	249,237
Grand totals			337,321	293,997
Vines and creepers				
Ampelopsis	200	-	1,260	4,167
Aristolochia	-	-	26	83
Celastrus	-	-	42	46
Clematis	-	-	366	679
Hedera	-	-	106	115
Lonicera	-	-	343	280
Polygonum	-	-	-	21
Wistaria	-	-	26	25
Others	-	-	100	72
Totals	200	-	2,269	5,488
Grand totals			2,469	5,488

**TABLE 6. Shipments of Ornamental Nursery Stock, 1963 and 1964
QUEBEC and MARITIMES - Concluded**

Description	Seedlings and liners		Other sizes	
	1963	1964	1963	1964
	number			
Ornamental trees				
Acer Platanoides	270	—	2,968	2,367
Acer Schwedleri	25	—	268	583
Acer Crimson King	—	—	863	1,187
Palmatum (variety)	6,388	—	170	3,087
Acer (Silver Maple)	—	92	11,142	5,039
Acer (Sugar Maple)	—	—	803	682
Acer Weirii	—	—	26	11
Acer Negundo	—	—	40	50
Acer (other)	—	—	1,141	493
Betula (White Birch)	—	—	598	496
Betula Laciniata (C.L.W.B.)	—	—	670	625
Betula (other)	—	—	306	416
Catalpa Speciosa	20	—	357	310
Catalpa Bungei	—	—	15	120
Cercidiphyllum (Katsura T.)	—	—	—	300
Crataegus	—	—	333	244
Fagus (Beech)	—	—	33	29
Fraxinus (Ash)	736	—	51	220
Ginkgo Biloba	—	—	2	4
Gleditsia (Honey Locust)	—	—	251	373
Cercis (Judas Trees)	—	—	—	5
Juglans	—	—	25	—
Liriodendron (Tulip Tree)	—	—	10	10
Magnolia	—	—	17	55
Malus	20	—	1,813	2,518
Morus (Mulberry)	—	—	5	1
Platanus	—	—	10	—
Populus (Carolina)	—	—	1,912	863
Populus (Lombardy)	—	—	7,644	4,693
Populus (other)	63	—	681	200
Prunus	—	—	550	303
Quercus (Oak)	—	—	251	354
Salix (Golden W. Willow)	66	34	3,804	3,064
Sorbus (Mountain Ash)	50	—	1,612	1,852
Tilia (Basswood)	—	—	730	646
Ulmus (Chinese Elm)	—	4,000	215	7,820
Ulmus (Elm)	—	—	185	113
Others	—	—	700	7,061
Totals	7,638	4,126	40,201	46,194
Grand totals			47,839	50,320
Broad-leaved evergreens				
Andromeda (Pieris)	—	—	—	8
Azaleas	—	—	55	10
Berberis	—	—	—	100
Buxus	—	—	32	218
Cotoneaster	—	—	30	15
Daphne	—	—	19	6
Euonymus	—	—	36	255
Hedera	—	—	6	20
Ilex	—	—	88	—
Mahonia	—	—	118	203
Pachistima	—	—	25	15
Pachysandra	—	—	120	—
Pieris	—	—	12	20
Rhododendron	—	—	158	22
Viburnum	—	—	31	225
Vinca	—	—	5,325	5,150
Yucca	—	—	—	25
Others	—	—	—	108
Totals	—	—	6,055	6,400
Grand totals			6,055	6,400
Area in ornamental nursery stock to the nearest acre			322.5	308.3
Value of sales at wholesale of ornamental stock for year ending December 31			292,302	261,560

TABLE 7. Shipments of Fruit Nursery Stock, 1963 and 1964
QUEBEC and MARITIMES

Description	One year		Two years and up	
	1963	1964	1963	1964
	number			
Apple trees on seedling rootstocks				
Delicious Red	-	-	3,821	1,929
Delicious Golden	-	-	-	7
Melba and Red Sport	-	-	2,279	2,660
McIntosh Red	-	177	13,731	10,685
Spartan	-	-	-	160
Spy	-	-	13	206
Winesap	-	-	4	8
Yellow transparent	-	-	1,533	1,661
Others	-	-	5,827	9,630
Totals	-	177	27,208	26,946
Grand totals			27,208	27,123
Apple trees on rootstock East Malling I and East Malling II				
Delicious Red	-	-	10	6
Delicious Golden	-	-	20	2
Melba and Red Sport	-	-	10	-
McIntosh Red	-	-	30	107
Winesap	-	-	-	26
Others	-	-	170	174
Totals	-	-	240	315
Grand totals			240	315
Apple trees on rootstock East Malling VII				
Delicious Red	-	-	6	-
Delicious Golden	-	-	5	-
McIntosh Red	-	-	175	1
Melba and Red Sport	-	-	-	-
Spartan	-	-	-	-
Spy	-	-	44	2
Winesap	-	-	-	-
Others	-	-	107	13
Totals	-	-	337	16
Grand totals			337	16
Apple trees on rootstock East Malling IX				
Delicious Red	-	-	32	36
Delicious Golden	-	-	-	4
Melba and Red Sport	-	-	56	4
McIntosh Red	-	-	72	53
Spy	-	-	5	23
Winesap	-	-	-	5
Yellow transparent	-	-	32	10
Others	-	-	43	78
Totals	-	-	240	213
Grand totals			240	213
Apple trees on Malus Robusta No. 5				
McIntosh Red	-	43	2,725	1,824
Others	-	1,793	550	50
Totals	-	1,836	3,275	1,874
Grand totals			3,275	3,710
Apple trees on other rootstock	-	-	-	1,060

TABLE 7. Shipments of Fruit Nursery Stock, 1963 and 1964
 QUEBEC and MARITIMES - Continued

Description	One year		Two years and up	
	1963	1964	1963	1964
	number			
Pear trees				
Anjou	-	-	13	57
Bartlett	-	-	142	143
Others	-	-	34	179
Totals	-	-	189	379
Grand totals			189	379
Cherry trees				
Bing	-	-	10	20
Black Tartarian	-	-	10	2
Montmorency	100	-	489	663
Others	-	-	103	87
Totals	100	-	612	772
Grand totals			712	772
Peach trees				
Golden Jubilee	-	-	-	1
Red Haven	-	-	-	13
Others	-	-	3	4
Totals	-	-	3	18
Grand totals			3	18
Plum trees				
Early Golden	-	-	86	160
Early Italian	-	-	50	110
Italian Prune	-	-	119	2
Stanley Prune	-	-	51	125
Others	-	-	449	321
Totals	-	-	755	718
Grand totals			755	718
Nut trees				
Chestnut	-	-	14	-
Walnut (English)	-	-	-	-
Others	-	-	-	-
Total	-	-	14	-
Grand total			14	-
Apricot trees	-	-	6	5
Quince trees	-	-	-	2
Dwarf pear trees	-	-	-	22
Red raspberries				
Latham	-	-	-	1,092
Newburg	-	-	181,500	55,200
Viking	-	-	29,200	28,500
Others	-	-	9,200	90,400
Totals	-	-	219,900	175,192
Grand totals			219,900	175,192
Other small fruit species and miscellaneous				
Black raspberries	-	-	-	-
Purple raspberries	-	-	25	100
Gooseberry bushes	-	-	215	270
Black currant bushes	-	-	176	235
Red currant bushes	-	-	191	340
Strawberry plants	-	-	1,215,325	2,273,000
Asparagus roots	-	-	150	-
Horseradish roots	-	-	-	50
Rhubarb roots	-	-	285	159
Other berry bushes	-	-	3,094	151,099

TABLE 7. Shipment of Fruit Nursery Stock, 1963 and 1964
QUEBEC and MARITIMES - Concluded

Description	One year		Two years and up	
	1963	1964	1963	1964
	number			
Grapes vines				
Concord			87	206
Niagara			44	104
Agawam			72	102
Fredonia			113	211
Van Buren			—	4
Others			304	158
Totals			620	785
Grand totals			620	785
Area in fruit nursery stock to the nearest acre			23.7	2,306.7
Value of sales at wholesale of fruit nursery stock for year ending December 31			\$ 53,201	77,810

TABLE 8. Shipments of Ornamental Nursery Stock, 1963 and 1964
ONTARIO

Description	Liners		Other sizes	
	1963	1964	1963	1964
	number			
Coniferous evergreens				
Abies	629	705	920	446
Cedrus Atlantica	—	—	—	40
Cedrus Deodora	—	—	—	70
Cedrus other	—	—	5	312
Chamaecyparis Lawsoniana (upright varieties)	—	—	57	517
Chamaecyparis (dwarf or low varieties)	—	—	80	8
Chamaecyparis Obtusa (upright varieties)	—	—	5	26
Chamaecyparis Obtusa (dwarf or low varieties)	—	—	6	10
Chamaecyparis Pisifera (upright varieties)	—	—	213	1,366
Chamaecyparis Pisifera (dwarf or low varieties)	—	—	53	113
Chamaecyparis (others)	—	—	88	279
Juniperus Pfitzeriana	8,706	4,665	36,290	33,956
Juniperus Pfitzeriana Aurea	6,575	6,198	17,982	20,926
Juniperus Suecica	305	110	9,190	5,142
Juniperus Excelsa Stricta	3,345	3,550	13,096	9,443
Juniperus Hetzi	4,414	4,626	26,845	21,849
Juniperus Mounbatten	3,010	8,980	12,480	12,182
Juniperus Obelisk	150	255	1,971	2,525
Juniperus Keteleeri	200	130	1,788	2,240
Juniperus Sabina	6,666	5,186	32,707	28,178
Juniperus Tamariscifolia	2,475	3,640	11,525	10,779
Juniperus Andorra	3,922	3,895	12,552	13,562
Juniperus Squamata Meyerl	1,145	728	5,967	6,223
Juniperus Virginiana	1,040	64	2,668	1,986
Juniperus Virginiana Canaerti	785	2,387	5,851	6,833
Juniperus Virginiana Glauca	455	980	4,708	4,633
Juniperus Hill's Dundee	760	905	3,953	3,378
Juniperus Pseudocupressus	—	—	530	356
Juniperus Burki	1,450	867	3,816	2,666
Juniperus (other)	8,060	3,024	21,806	25,846
Picea (Norway Spruce)	5,200	520	6,459	6,291
Picea (White Spruce)	13,300	5,770	4,326	3,455
Picea (Colorado Blue)	25,860	19,456	8,261	9,903
Picea (dwarf variety)	1,161	475	7,036	6,307
Picea Kosteri	125	77	4,250	4,170
Picea (other)	—	125	3,527	2,758

TABLE 8. Shipments of Ornamental Nursery Stock, 1963 and 1964
ONTARIO - Continued

Description	Liners		Other sizes	
	1963	1964	1963	1964
	number			
Coniferous evergreens - Concluded				
Pinus Mugho	5,045	68,010	14,005	16,490
Pinus (other).....	124,040	6,106	10,553	14,457
Taxus Cuspidata (upright)	39,746	81,646	35,423	44,520
Taxus (Yew) Cusp. (spreading)	330	250	16,379	18,412
Taxus Cusp. Hicksi	4,171	4,822	17,893	24,655
Pseudotsuga	1,025	946	1,396	1,217
Taxus (other)	696	600	15,984	24,848
Thuja Elegantissima	15	-	180	697
Thuja Little Gem.....	300	150	4,604	1,276
Thuja Pyramidalis	8,711	20,690	44,122	46,917
Thuja Pyr. Rosenthali	100	25	5,348	5,980
Thuja Umbraculifera	100	-	724	1,548
Thuja Warreana	430	480	1,966	2,678
Thuja Woodwardi	865	1,360	8,880	7,759
Thuja (other)	5,360	4,173	40,671	19,736
Tsuga (Hemlock)	-	-	1,333	1,282
Others	200	90	365	24,614
Totals	290,872	266,666	480,837	505,860
Grand totals			771,709	772,526
Deciduous shrubs				
Abelia	-	-	-	56
Althea (Hibiscus).....	-	-	4,615	333
Althea (Rose of Sharon)	-	-	5,182	7,990
Amorpha	-	-	10	50
Amygdalus	-	-	2,766	8,673
Azaleas	-	-	613	1,378
Berberis Thumbergi	8,990	-	62,987	57,073
Berberis T. Atrop.	27,965	-	171,108	152,122
Berberis (other)	1,480	-	64,144	18,155
Buddleia	-	-	12,533	9,633
Calycanthus	-	-	5	30
Calycarpa	-	-	-	135
Carypteris	-	-	3,406	2,316
Caragana	510	-	22,241	15,844
Chaenomeles (Cydonia).....	4,160	-	11,223	11,789
Cornus Elegantissima	395	-	24,106	24,070
Cornus (other).....	290	-	8,166	11,329
Corylus	-	-	366	534
Cotoneaster	200	-	50,402	34,206
Deutzia	70	-	6,231	6,311
Erica (Heather).....	-	-	1,694	15,705
Forsythia	2,655	-	37,526	31,574
Hydrangea Arb. Ster.	50	-	21,799	13,641
Hydrangea P.G.	255	-	28,646	32,484
Hydrangea (other).....	50	-	2,162	3,718
Halesia	-	-	105	49
Hypericum	-	-	375	1,172
Kalmia	-	-	16	155
Kerria	1,000	-	3,982	2,595
Kolkwitzia	90	-	6,453	7,544
Laburnum	-	-	507	535
Lavendula (Lavender)	-	-	313	4,042
Ligustrum Amurense	11,827	-	408,970	362,667
Ligustrum (other)	2,805	-	147,775	110,348
Lonicera	8,825	-	192,737	245,504
Philadelphus Cor. Aurea.....	6,060	-	38,538	41,590
Philadelphus Virg.	1,760	-	27,907	23,547
Philadelphus (other)	1,130	-	29,682	28,193
Physocarpus	-	-	22,413	5,590
Potentilla	1,120	-	20,368	21,093
Prunus	15,300	-	40,194	34,917

TABLE 8. Shipments of Ornamental Nursery Stock, 1963 and 1964
ONTARIO - Continued

Description	Liners		Other sizes	
	1963	1964	1963	1964
number				
Deciduous shrubs - Concluded				
Rhodotypos	—	—	600	628
Rhus	—	—	2,399	3,595
Ribes	2,910	—	49,170	68,015
Robinia	—	—	305	335
Sambucus	150	—	11,053	10,839
Spirea Anthony Waterer	525	—	16,953	14,655
Spirea Froebeli	200	—	13,991	9,399
Spirea Van Houttei	510	—	74,647	71,188
Spirea (other)	80	—	17,069	17,548
Syringa	425	—	33,464	37,250
Tamarix	350	—	4,335	10,214
Ulmus (Chinese Elm)	155,127	—	395,970	464,475
Viburnum	4,695	—	18,739	23,213
Weigelia	831	—	29,811	26,032
Others	5,565	—	64,626	54,317
Totals	268,355	—	2,215,398	2,160,407
Grand totals			2,483,753	2,160,407
number				
Seedlings and liners		Other sizes		
Ornamental trees				
Acer Platanoides	820	—	19,935	17,421
Acer Schwedleri	55	—	6,147	6,048
Acer Crimson King	25	—	10,701	12,440
Acer Palmatum (variety)	—	—	850	867
Acer (Silver Maple)	55	—	16,771	19,178
Acer (Sugar Maple)	500	—	3,879	5,424
Acer Weirii	—	—	296	197
Acer Negundo	—	—	79	55
Acer (other)	100	—	2,314	6,448
Betula (White Birch)	9,585	—	28,495	31,452
Betula Laciniata (C.L.W.B.)	15	—	5,768	8,827
Betula (other)	—	—	2,721	3,751
Catalpa Speciosa	—	—	3,087	3,669
Catalpa Bungei	121	—	2,452	2,767
Cercidiphyllum (Katsura T)	—	—	288	359
Cercis (Judas tree)	—	—	168	289
Crataegus	—	—	3,366	3,185
Fagus (Beech)	1	—	1,030	826
Fraxinus (Ash)	2,700	—	8,732	8,606
Ginkgo Biloba	—	—	1,001	773
Gleditsia (Honey locust)	3,575	—	11,205	6,766
Juglans	—	—	127	199
Liriodendron (Tulip tree)	—	—	564	201
Magnolia	17	—	1,128	1,468
Malus	500	—	41,053	35,879
Morus (Mulberry)	500	—	1,063	1,237
Platanus	745	—	3,240	2,050
Populus (Carolina)	2,095	—	11,578	8,380
Populus (Lombardy)	2,525	—	53,338	63,965
Populus (other)	—	—	3,140	3,256
Prunus	10	—	5,857	7,975
Quercus (Oak)	210	—	1,706	1,684
Salix (Golden W. Willow)	270	—	20,088	14,930
Sorbus (Mountain Ash)	3,940	—	20,979	24,331
Tilia (Basswood)	5,674	—	9,338	12,424
Ulmus (Chinese Elm)	1,000	—	4,965	4,720
Ulmus (Elm)	—	—	793	1,338
Others	550	—	29,280	44,763
Totals	35,588	—	337,522	368,148
Grand totals			373,110	368,148

**TABLE 8. Shipments of Ornamental Nursery Stock, 1963 and 1964
ONTARIO - Concluded**

Description	Seedlings and liners		Other sizes	
	1963	1964	1963	1964
	number			
Broad-leaved evergreens				
Andromeda (Pieris)	-	-	55	305
Azaleas	-	-	713	1,580
Berberis	-	32	1,251	2,354
Buxus	14,238	9,615	26,031	25,997
Cotoneaster	-	-	616	960
Daphne	-	64	1,731	1,573
Euonymus	3,955	45	19,065	27,182
Hedera	-	-	2,684	3,882
Ilex	-	-	160	443
Mahonia	1,150	-	2,581	3,068
Pachistima	70	281	3,400	8,516
Pachysandra	5,300	-	40,087	50,978
Pieris	-	-	136	175
Pyracantha	1	-	540	1,672
Rhododendron	3	-	1,134	1,226
Viburnum	-	-	955	396
Vinca	5,050	-	51,197	97,479
Yucca	-	-	5,450	9,622
Others	85	792	2,564	573
Totals	29,852	10,829	160,350	237,981
Grand totals			190,202	248,810
Vines and creepers				
Ampelopsis	-	-	12,509	21,575
Aristolochia	-	-	1,185	1,093
Bignonia	-	-	460	238
Celastrus	3,080	100	3,406	11,841
Clematis	3	-	13,200	10,210
Hedera	-	-	4,768	1,412
Lonicera	-	-	5,105	5,268
Polygonum	-	140	2,997	2,690
Wistaria	-	-	708	869
Others	-	-	2,984	1,621
Totals	3,083	240	47,322	56,817
Grand totals			50,405	57,057
Roses (shrub or bush)				
Climbers			232,836	164,604
Hybrid Teas			642,577	536,792
Multifloras			139,314	122,018
Perpetuals			1,637	3,306
Polyanthas and Floribundas			346,122	293,242
Rugosas and Briars			51,398	51,021
Others			17,894	21,914
Totals			1,431,778	1,192,897
Roses (on standards)				
Hybrid Teas			6,118	7,736
Totals			6,118	7,736
Area in ornamental nursery stock to the nearest acre			2,526.2	2,949.0
Value of sales at wholesale of ornamental stock for year ending December 31			\$ 3,396,153	\$ 4,022,319

TABLE 9. Shipments of Fruit Nursery Stock, 1963 and 1964
ONTARIO

Description	One year		Two years and up	
	1963	1964	1963	1964
	number			
Apple trees on seedling rootstocks				
Delicious Red	15	67	4,374	4,284
Delicious Golden	-	21	833	947
McIntosh Red	-	1,285	10,517	13,139
Melba and Red Sport	-	-	2,823	2,808
Spartan	-	-	-	415
Spy	-	116	2,945	2,935
Winesap	-	-	-	45
Yellow Transparent	-	-	2,591	1,578
Others	-	-	8,682	5,429
Totals	15	1,489	32,765	31,590
Grand totals			32,780	33,069
Apple trees on rootstock East Malling I and East Malling II				
Delicious Red	1,009	1,406	1,640	1,078
Delicious Golden	261	300	238	998
McIntosh Red	-	1,284	2,200	2,657
Melba and Red Sport	-	-	1,350	300
Spartan	-	100	-	-
Spy	250	-	600	1,890
Winesap	-	-	-	-
Yellow Transparent	-	-	425	774
Others	495	214	2,606	910
Totals	2,015	3,304	9,059	8,607
Grand totals			11,074	11,911
Apple trees on rootstock East Malling IX				
Delicious Red	30	540	2,011	1,736
Delicious Golden	-	400	2,530	266
McIntosh Red	-	2,054	5,807	9,732
Melba and Red Sport	15	-	1,373	1,381
Spartan	15	-	25	215
Spy	-	300	2,284	1,779
Winesap	-	-	-	50
Yellow Transparent	-	-	1,945	1,800
Others	-	-	1,575	163
Totals	60	3,294	17,550	17,122
Grand totals			17,610	20,416
Apple trees on rootstock East Malling VII				
Delicious Red	15	2,670	5,286	3,532
Delicious Golden	3,854	3,659	1,165	400
McIntosh Red	692	3,514	4,122	7,187
Melba and Red Sport	500	-	895	1,276
Spartan	6,000	200	5	200
Spy	-	664	2,517	1,326
Winesap	-	-	10	20
Yellow Transparent	-	-	1,315	931
Others	1,751	2,100	3,788	2,295
Totals	12,812	12,807	19,103	17,167
Grand totals			31,915	29,974

**TABLE 9. Shipments of Fruit Nursery Stock, 1963 and 1964
ONTARIO - Continued**

Description	One year		Two years and up	
	1963	1964	1963	1964
	number			
Apple trees on other rootstock				
Totals	3,278	42,376	2,702	4,200
Grand totals			5,980	46,576
Apple trees on Malus Robusta No. 5				
McIntosh Red	-	-	-	-
Others	-	-	-	-
Total	-	-	-	-
Grand total			-	-
Pear trees				
Anjou	128	375	1,232	1,126
Bartlett	3,615	3,284	11,989	13,544
Others	497	344	11,099	8,752
Totals	4,240	4,003	24,320	23,422
Grand totals			28,560	27,425
Peach trees				
Elberta	8,063	7,028	1,514	6,898
Golden Jubilee	10,790	8,838	2,656	11,650
Red Haven.....	9,022	4,237	2,852	10,966
Veteran and other varieties	34,848	24,266	91,862	28,313
Totals	62,723	44,369	98,884	57,827
Grand totals			161,607	102,196
Plum trees				
Early Golden.....	1,838	1,595	2,537	3,281
Early Italian.....	330	10	75	1,470
Italian Prune.....	2,310	1,884	2,860	4,023
Stanley Prune.....	1,666	941	2,560	2,589
Others	2,520	2,485	7,412	5,210
Totals	8,664	6,915	15,444	16,573
Grand totals			24,108	23,488

TABLE 9. Shipments of Fruit Nursery Stock, 1963 and 1964
ONTARIO - Continued

Description	One year		Two years and up	
	1963	1964	1963	1964
	number			
Nut trees				
Chestnut	-	-	297	15
Filbert.....	140	-	1,055	170
Walnut (English)	16	-	-	245
Others	272	-	-	175
Totals	428	-	1,352	605
Grand totals			1,780	605
Cherry trees				
Bing.....	1,520	1,265	1,594	2,843
Black Tartarian	315	20	1,587	2,764
Lambert.....	-	-	70	45
Montmorency	10,009	6,412	7,026	10,341
Sam	-	-	-	-
Van	500	280	310	1,085
Others	4,182	2,829	6,854	10,149
Totals	16,526	10,806	17,441	27,227
Grand totals			33,967	38,033
Nectarine trees	-	340	2	512
Apricot trees	1,368	1,013	3,558	3,328
Quince trees.....	-	-	57	45
Dwarf pear trees	-	400	3,480	4,280
Red raspberries				
Latham			218,132	271,274
Newburg			94,213	83,055
Viking			105,496	83,350
Others			130,236	166,741
Totals			548,077	604,420
Grand totals			548,077	604,420
Other small fruit species and miscellaneous				
Black raspberries			24,939	16,900
Purple raspberries.....			29,971	20,335
Blackberry bushes.....			17,408	11,090
Gooseberry bushes			9,813	11,879
Black currant bushes			16,129	14,602
Red currant bushes			11,517	12,447
Boysenberry bushes			945	500
Loganberry bushes			-	-
Other berry bushes			4,261	4,640
Strawberry plants.....			1,031,488	1,234,725
Asparagus roots.....			223,014	206,462
Horseradish roots			4,817	4,025
Rhubarb roots.....			136,192	121,992

**TABLE 9. Shipments of Fruit Nursery Stock, 1963 and 1964
ONTARIO - Concluded**

Description	One year		Two years and up	
	1963	1964	1963	1964
	number			
Grape vines				
Concord			40,389	63,486
Niagara			47,075	43,577
Agawam			18,725	34,794
Elvira			27,326	45,240
Delaware			5,100	17,215
Dutchess			8,000	12,700
Catawba			2,000	12,200
Fredonia			16,312	9,957
Van Buren			5,000	6,260
Buffalo			1,000	1,450
Seibel 10878			20,040	40,900
Seibel 9110			5,000	11,200
Other French Hybrids			15,400	48,905
Others			30,421	73,029
Total			241,788	420,913
Grand totals			241,788	420,913
Area in fruit nursery stock to the nearest acre			2,311.0	457.3
Value of sales at wholesale of fruit nursery stock for year ending December 31			362,517	437,959

**TABLE 10. Shipments of Ornamental Nursery Stock, 1963 and 1964
MANITOBA**

Description	Liners		Other sizes	
	1963	1964	1963	1964
	number			
Coniferous evergreens				
Abies	-	-	220	83
Cedrus	-	-	-	20
Juniperus Pfitzeriana	-	-	58	-
Juniperus Pfitzeriana Aurea	-	-	14	10
Juniperus Hetzi	-	-	-	-
Juniperus Sabina	-	-	1,390	1,875
Juniperus Andorra	-	-	40	-
Juniperus (other)	-	-	220	136
Picea (Norway spruce)	-	-	-	6
Picea (White spruce)	4,000	2,500	1,839	3,419
Picea (Colorado Blue)	-	3,000	1,217	3,190
Picea (Dwarf var.)	-	-	293	100
Picea Kosteri	-	-	290	195
Picea (other)	-	800	1,137	930
Pinus Mugho	-	-	882	475
Pinus (other)	10	-	525	1,095
Thuya Little Gem	-	-	84	140
Thuya Pyramidalis	-	-	285	810
Thuya Pyr. Rosenthali	-	-	150	360
Thuya Warreana	-	-	428	190
Thuya Woodwardi	-	-	25	102
Thuya (other)	-	-	470	275
Others	-	-	60	80
Totals	4,010	6,300	9,627	13,481
Grand totals			13,637	19,781

**TABLE 10. Shipments of Ornamental Nursery Stock, 1963 and 1964
MANITOBA - Continued**

Description	Liners		Other sizes	
	1963	1964	1963	1964
number				
Deciduous shrubs				
Amorpha	—	—	15	75
Berberis Thumbergi	—	—	297	450
Berberis T. Atrop.....	—	—	42	90
Berberis (other)	100	—	140	205
Buddleia	—	—	—	100
Caragana	25,300	43,600	825	320
Cornus Elegantissima	—	—	432	420
Cornus (other).....	350	100	1,200	902
Cotoneaster.....	13,025	23,800	6,698	10,216
Erica Heather.....	—	—	—	50
Forsythia.....	—	—	215	120
Hydrangea Arb. Ster.....	—	—	70	45
Hydrangea P.G.	—	—	420	131
Hydrangea (other)	—	—	—	300
Lavendula	—	—	50	—
Lonicera	2,000	1,800	1,489	1,371
Philadelphus Cor. Aurea	—	—	—	25
Philadelphus Virg.	—	—	899	716
Philadelphus (other)	—	—	842	880
Physocarpus	—	—	450	935
Potentilla	—	—	2,948	2,695
Prunus Varieties	10,500	2,400	2,050	1,225
Rhus.....	—	300	130	140
Ribes	840	400	930	2,050
Robinia	—	250	—	250
Sambucus.....	—	5,100	625	635
Spiraea Anthony Waterer	100	—	456	145
Spiraea Froebeli.....	—	—	1,590	2,064
Spiraea Van Houttei.....	—	—	1,445	1,402
Spiraea (other)	—	—	2,055	1,983
Syringa.....	8,200	5,600	2,993	1,625
Tamarix	—	—	95	65
Ulmus (Chinese Elm).....	44,100	24,325	1,073	1,573
Viburnum.....	—	200	975	1,015
Others	1,350	—	1,025	50
Totals	105,865	107,875	32,474	34,271
Grand totals			138,339	142,146
Ornamental trees				
Acer Crimson King	—	—	25	—
Acer schwedleri	—	—	25	—
Acer (Silver Maple)	—	—	445	321
Acer (Sugar Maple)	—	—	—	50
Acer Negundo	—	—	306	3
Acer Weirii	—	—	—	50
Acer (other).....	—	700	600	510
Betula (White Birch)	—	—	1,852	1,249
Betula Laciniata (C.L.W.B.)	—	—	1,157	1,441
Betula (other)	—	—	35	50
Crataegus	300	600	700	290
Fagus (Beech)	—	—	—	550
Fraximus (Ash)	500	3,700	3,423	1,485
Malus	30,000	1,500	1,900	2,304
Populus (Lombardy)	—	—	40	60
Populus (other)	2,200	1,000	2,092	2,536
Prunus	115	—	283	240
Quercus (Oak)	500	—	50	—
Salix (Golden W. Willow)	5,300	4,600	681	950
Sorbus (Mountain Ash).....	1,000	—	2,527	1,588
Tilia (Basswood).....	—	—	415	365
Ulmus (Chinese Elm)	25	200	967	815
Ulmus (Elm)	—	—	7,400	1,625
Totals	39,940	12,300	24,923	16,482
Grand totals			64,863	28,782
Broad-leaved evergreens				
Daphne.....	—	—	110	350
Euonymus	105	—	530	85
Mahonia	—	—	60	—
Pachistima	—	—	20	57
Pachysandra	—	—	—	10

**TABLE 10. Shipments of Ornamental Nursery Stock 1963 and 1964
MANITOBA - Concluded**

Description	Liners		Other sizes	
	1963	1964	1963	1964
number				
Broad-leaved evergreens - Concluded				
Vinca	-	-	100	100
Yucca	-	-	156	100
Others	-	-	-	-
Totals	105	-	976	702
Grand totals			1,081	702
number				
Seedling and liners		Other sizes		
Vines and creepers				
Ampelopsis	-	-	-	25
Celastrus	-	-	150	95
Clematis	-	-	660	375
Lonicera	-	-	555	385
Others	-	250	315	305
Totals	-	250	1,680	1,185
Grand totals			1,680	1,435
Roses (shrub or bush)				
Climbers			85	125
Hybrid Teas			900	1,120
Multifloras			200	-
Perpetuals			300	60
Polyanthas and Floribundas			180	260
Rugosas and Briars			2,292	2,466
Others			1,450	40
Totals			5,407	4,071
Roses (on standards)				
Hybrid Teas			-	-
Total			-	-
Area in ornamental nursery stock to the nearest acre			182.8	168.0
Value of sales at wholesale of ornamental stock for year ending December 31..... \$			79,222	72,257

**TABLE 11. Shipments of Fruits Nursery Stock, 1963 and 1964
MANITOBA**

Description	One year		Two years and up	
	1963	1964	1963	1964
number				
Apple trees on seedling rootstocks				
Delicious Red	300	-	-	-
Winesap	-	-	-	-
Yellow Transparent	-	-	-	-
Others	7,715	3,230	3,350	2,045
Totals	8,015	3,230	3,350	2,045
Grand totals			11,365	5,275
Apple trees on rootstock East Malling IX				
Others	-	-	-	-
Total	-	-	-	-
Grand total			-	-

TABLE 11. Shipments of Fruit Nursery Stock, 1963 and 1964
MANITOBA - Concluded

Description	One year		Two years and up	
	1963	1964	1963	1964
	number			
Apple trees on other rootstock				
Totals	—	—	114	62
Grand totals			114	62
Plum trees				
Early Golden	—	—	—	300
Others	710	475	702	487
Totals	710	475	702	787
Grand totals			1,412	1,262
Nut trees				
Chestnut	—	50	—	30
Others	200	40	300	25
Totals	200	90	300	55
Grand totals			500	145
Cherry trees				
Bing	—	—	—	—
Black Tartarian	—	—	—	—
Lambert	—	—	—	—
Montmorency	—	—	—	—
Others	130	700	1,218	1,610
Totals	130	700	1,218	1,610
Grand totals			1,348	2,310
Pear trees				
Others	425	210	166	196
Totals	425	210	166	196
Grand totals			591	406
Apricot trees	—	150	35	—
Other small fruit species and miscellaneous				
Black raspberries			1,000	500
Gooseberry bushes			735	795
Black currant bushes			846	555
Red currant bushes			595	670
Other berry bushes			—	50
Strawberry plants			23,300	19,700
Asparagus roots			2,375	1,400
Horseradish roots			40	65
Rhubarb roots			1,377	4,385
Red raspberries				
Latham			1,500	3,700
Viking			—	—
Others			27,300	23,600
Totals			28,800	27,300
Grape vines				
Others			750	560
Totals			750	560
Area in fruit nursery stock to the nearest acre			39.8	35.1
Value of sales at wholesale of fruit nursery stock for year ending December 31			15,206	9,447

**TABLE 12. Shipments of Ornamental Nursery Stock, 1963 and 1964
SASKATCHEWAN and ALBERTA**

Description	Liners		Other sizes	
	1963	1964	1963	1964
number				
Coniferous evergreens				
Abies	-	-	-	-
Juniperus Andorra	-	-	130	141
Juniperus Pfitzeriana	-	-	100	130
Juniperus Pfitzeriana Aurea.....	-	-	300	205
Juniperus Mountbatten.....	-	-	500	-
Juniperus Sabina	-	-	-	3,511
Juniperus Tamariscifolia	-	-	2,900	125
Juniperus Virginiana	-	-	-	-
Juniperus (other)	-	-	128	4,739
Picea (Norway Spruce)	-	-	30	-
Picea (White Spruce)	50	-	1,648	935
Picea (Colorado Blue).....	-	-	1,504	72,221
Picea (Dwarf varieties).....	-	-	115	15
Picea Kosteri	-	-	787	845
Picea (other).....	-	-	945	32,679
Pinus Muhgo	-	-	2,117	4,250
Pinus (other).....	-	-	309	718
Taxus Cuspidata (upright)	-	-	100	95
Taxus Cuspidata (spreading).....	-	-	-	-
Thuja Little Gem	-	-	100	-
Thuja Pyramidalis.....	-	-	360	98
Thuja Pyr. Rosenthali	-	-	100	-
Thuja Warreana	-	-	377	445
Thuja Woodwardi	-	-	150	-
Others	-	-	-	45,110
Totals	50	-	12,700	166,262
Grand totals			12,750	166,262
Deciduous shrubs				
Abelia	-	-	-	79
Berberis Thumbergi	-	-	-	93
Althea	-	-	-	180
Amorpha.....	-	-	100	52
Berberis T. Atrop.....	-	-	100	2,435
Berberis (other)	-	-	1,903	245
Buddleia	-	-	-	25
Caragana	500	4,980	48,659	3,105,529
Cornus Elegantissima.....	-	-	2,343	2,015
Cornus (other).....	100	-	1,389	1,342
Corylus	-	-	-	224
Cotoneaster.....	500	5,434	88,002	127,963
Forsythia.....	-	-	40	28
Deutzia	-	-	-	223
Hydrangea P.G.	-	-	-	62
Hydrangea Arb. Ster.	-	-	210	53
Hydrangea (other).....	-	-	17	154
Kolkwitzia	-	-	-	25
Ligustrum (other).....	-	-	250	1,200
Lonicera	800	823	8,149	6,877
Philadelphus cor. Aurea	-	-	-	525
Philadelphus Virg.	-	-	40	-
Philadelphus (other)	-	-	2,690	3,329
Physocarpus	-	-	525	125
Potentilla	1,000	396	6,735	7,187
Prunus Varieties	-	3,000	5,882	6,005
Ribes	3,700	330	1,508	2,503
Sambucus.....	-	-	9,943	9,415
Spiraea Anthony Waterer.....	-	-	22	95
Spiraea Froebeli.....	-	-	4,586	7,112
Spiraea Van Houttei	100	-	4,034	3,378
Spiraea (other)	500	-	7,170	6,354
Syringa.....	500	988	21,386	25,606
Tamarix	-	-	7,278	202
Ulmus (Chinese Elm).....	-	3,220	9,278	13,838
Viburnum	-	-	941	1,850
Weigelia.....	-	-	25	-
Other	200	2,000	400	1,133
Totals	7,900	21,171	233,605	3,337,461
Grand totals			241,505	3,358,632

TABLE 12. Shipments of Ornamental Nursery Stock, 1963 and 1964
SASKATCHEWAN and ALBERTA - Concluded

Description	Seedlings and liners		Other sizes	
	1963	1964	1963	1964
	number			
Ornamental trees				
Acer (Silver Maple)	-	-	15	50
Acer Negundo	-	42	1,881	178,194
Acer (other)	-	-	553	187
Betula (White Birch)	-	-	985	1,783
Betula Laciniata (C.L.W.B.)	-	-	3,018	4,741
Betula (other)	-	-	25	42
Crataegus	-	-	147	470
Fagus (Beech)	-	-	-	1,000
Fraxinus (Ash)	100	500	9,483	529,533
Malus	-	-	3,596	4,036
Populus (other)	2,000	7,000	17,755	163,367
Prunus	3,500	-	11,438	4,709
Quercus (Oak)	60	100	53	29
Salix (Golden, W. Willow)	1,500	2,400	3,801	190,847
Sorbus	-	700	5,707	6,014
Tilia	-	-	-	10
Ulmus (Chinese Elm)	10,000	8,000	845	1,688
Ulmus (Elm)	-	-	1,070	315,180
Others	-	-	1,966	365,466
Totals	17,160	18,742	62,338	1,767,346
Grand totals			79,498	1,786,088
Vines and creepers				
Ampelopsis	-	-	963	669
Celastrus	-	-	20	5
Clematis	-	-	278	891
Hedera	-	-	250	-
Lonicera	-	-	36	140
Others	-	-	1,163	353
Totals	-	-	2,710	2,058
Grand totals			2,710	2,058
Broad-leaved evergreens				
Cotoneaster	-	1,500	11,600	110
Daphne	-	-	-	100
Euonymus	-	-	6	65
Mahonia	-	-	-	120
Pachistima	-	-	-	183
Vinca	-	-	-	10
Yucca	-	-	-	10
Totals	-	1,500	11,606	598
Grand total			11,606	2,098
Roses (shrub or bush)				
Climbers	-	-	75	498
Hybrid Teas	-	-	300	3,192
Polyanthas and Floribundas	-	-	-	1,103
Rugosas and Briars	-	-	11,433	9,388
Others	-	-	4,264	5,204
Totals	-	-	16,072	19,385
Roses (on standards)				
Hybrid Teas	-	-	15,090	-
Total	-	-	15,090	-
Area in ornamental nursery stock to the nearest acre			362.2	590.8
Value of sales at wholesale of ornamental stock for year ending December 31			180,625	195,972

**TABLE 13. Shipments of Fruit Nursery Stock, 1963 and 1964
SASKATCHEWAN and ALBERTA**

Description	One year		Two years and up	
	1963	1964	1963	1964
	number			
Apple trees on seedling rootstocks				
McIntosh Red	-	-	75	50
Spy	-	-	40	-
Yellow Transparent	-	-	481	50
Others	70	350	2,380	2,374
Totals	70	350	2,976	2,474
Grand totals			3,046	2,824
Apple trees on rootstock East Malling IX				
McIntosh Red	-	-	50	-
Total	-	-	50	-
Grand total			50	-
Apple trees on other rootstock				
Totals	1,100	-	-	6,218
Grand totals			1,100	6,218
Plum trees				
Early Italian	-	-	75	75
Stanley Prunes	-	-	-	629
Others	574	70	763	831
Totals	574	70	838	1,535
Grand totals			1,412	1,605
Cherry trees				
Others	181	-	499	801
Totals	181	-	499	801
Grand totals			680	801
Pear trees				
Others	-	-	-	310
Total	-	-	-	310
Grand total			-	310
Red raspberries				
Latham			2,700	200
Newburg			-	200
Viking			-	600
Others			58,700	58,532
Totals			61,400	59,532
Grand totals			61,400	59,532
Other small fruit species and miscellaneous				
Black raspberries			6,302	1,000
Purple raspberries			-	5,740
Gooseberry bushes			2,704	2,818
Black currant bushes			2,786	2,075
Red currant bushes			2,143	1,529
Other berry bushes			900	1,650
Strawberry plants			22,925	24,245
Asparagus roots			6,203	4,670
Rhubarb roots			6,408	5,369
Horseradish roots			-	110
Grape vines				
Others			450	-
Total			450	-
Grand total			450	-
Area in fruit nursery stock to the nearest acre			37.5	33.2
Value of sales at wholesale of fruit nursery stock for year ending December 31			29,057	23,291

TABLE 14. Shipments of Ornamental Nursery Stock, 1963 and 1964
BRITISH COLUMBIA

Description	Liners		Other sizes	
	1963	1964	1963	1964
	number			
Coniferous evergreens				
Abies	100	1,200	414	267
Cedrus Atlantica	—	25	126	183
Cedrus Deodora	400	510	641	459
Cedrus (other).....	—	—	50	118
Chamaecyparis Lawsoniana (upright varieties).....	6,115	9,872	12,240	11,779
Chamaecyparis Lawsoniana (dwarf or low varieties)	271	1,150	1,647	627
Chamaecyparis Obtusa (upright varieties)	100	56	744	407
Chamaecyparis Obtusa (dwarf or low varieties).....	—	1	556	679
Chamaecyparis Pisifera (upright varieties).....	525	500	2,693	1,306
Chamaecyparis Pisifera (dwarf or low varieties).....	—	2,500	704	3,064
Chamaecyparis (other).....	—	3	192	—
Juniperus Pfitzeriana	5,350	3,600	2,741	2,103
Juniperus Pfitzeriana Aurea.....	4,950	3,500	3,838	3,151
Juniperus Suecica	—	100	738	486
Juniperus Excelsa Stricta.....	—	50	208	25
Juniperus Hetzi	2,265	1,225	1,160	1,787
Juniperus Mounbatten	—	—	50	—
Juniperus Obelisk	—	—	—	15
Juniperus Keteleeri	—	—	43	1
Juniperus Sabina	400	950	2,565	2,912
Juniperus Tamariscifolia	2,025	1,500	857	517
Juniperus Andorra	1,050	—	473	437
Juniperus Squamata Meyeri	500	1,331	1,227	2,001
Juniperus Virginiana	—	—	203	200
Juniperus Virginiana Cannaerti	170	—	120	53
Juniperus Virginiana Glauca	—	—	34	29
Juniperus Hill's Dundee	—	—	66	—
Juniperus Burki	100	70	821	81
Juniperus Pseudocupressus	—	—	—	—
Juniperus (other)	—	900	2,925	1,843
Picea (Norway Spruce).....	—	1,850	3,025	2,181
Picea (Colorado Blue)	—	—	2,771	629
Picea (Dwarf Varieties)	50	—	366	674
Picea Kosteri	45	—	594	330
Picea (White Spruce)	—	—	—	26
Picea (other)	—	1,400	39	225
Pseudotsuga	—	—	255	110
Pinus Mugho	150	286	2,694	3,460
Pinus (other)	—	200	363	2,155
Taxus Cuspidata (upright).....	—	—	1,227	1,012
Taxus Cuspidata (spreading)	—	—	8	62
Taxus Media Hicksi	—	30	148	711
Taxus (other)	—	—	157	542
Thuya Elegantissima	—	100	336	368
Thuya Little Gem	—	265	4	208
Thuya Pyramidalis	1,850	1,925	4,314	3,223
Thuya Pyr. Rosenthali.....	1,075	125	2,029	3,000
Thuya Umbraculifera	—	—	—	400
Thuya Warreana.....	550	—	2,131	1,267
Thuya Woodwardi	—	125	1,646	601
Thuya (other).....	—	1,455	2,218	2,299
Tsuga (Hemlock).....	—	150	200	700
Other	1,000	—	2,500	2,712
Totals.....	29,041	36,954	65,101	61,425
Grand totals.....			94,142	98,379

TABLE 14. Shipments of Ornamental Nursery Stock, 1963 and 1964
BRITISH COLUMBIA - Continued

Description	Liners		Other sizes	
	1963	1964	1963	1964
number				
Deciduous shrubs				
Abelia	-	-	52	100
Althea (Hibiscus).....	-	-	50	150
Althea (Rose of Sharon)	-	-	8	-
Amygdalus	-	-	10	226
Amorpha	-	-	-	46
Azaleas	-	1,200	3,354	3,150
Berberis Thumbergi	-	2	705	2,732
Berberis T. Atrop.....	2,100	-	3,271	2,356
Berberis (other)	-	200	441	736
Buddleia	-	-	108	226
Caryopteris	-	-	23	27
Calycanthus	-	-	-	51
Caragana	-	-	3,000	2,675
Chaenomeles (Cydonia).....	-	1	162	510
Cornus Elegantissima	-	-	688	1,863
Cornus (other).....	2,000	-	695	637
Corylus	-	-	15	93
Cotoneaster.....	150	203	22,766	12,000
Deutzia	-	-	143	762
Erica (Heather).....	600	813	29,699	11,285
Forsythia	-	-	434	1,570
Halesia	-	3,288	14	5
Hydrangea Arb. Ster.....	-	-	834	691
Hydrangea P.G.	-	50	606	1,693
Hydrangea (other).....	-	-	106	1,327
Hypericum	8,000	2,000	1,545	3,105
Kalmia	-	-	308	187
Kerria	-	-	42	31
Kolkwitzia.....	-	-	77	121
Laburnum	-	-	479	163
Lavendula (Lavender).....	-	-	2,177	2,264
Ligustrum Amurense	-	-	1,209	991
Ligustrum (other)	-	-	2,800	2,627
Lonicera	2,000	-	100	979
Philadelphus Cor. Aurea	-	-	32	427
Philadelphus Virg.....	2,000	-	832	1,611
Philadelphus (other)	-	2	853	688
Physocarpus	-	-	-	25
Potentilla	2,000	-	782	1,811
Prunus Varieties	100	-	3,503	2,850
Rhodotypos	-	-	2	-
Rhus	-	-	154	141
Ribes	-	-	1,861	360
Robinia	-	-	2	2
Sambucus	-	-	1,648	2,041
Spirea Anthony Waterer	-	-	45	279
Spirea Froebeli.....	2,000	-	456	1,626
Spirea Van Houttei.....	2,000	-	3,668	2,927
Spirea (other)	-	-	661	924
Syringa.....	1,000	-	976	1,736
Tamarix	2,000	-	129	1,280
Ulmus (Chinese Elm).....	500	-	4,590	4,897
Viburnum	-	-	531	1,019
Weigelia.....	-	1	571	592
Others	-	-	83,544	91,857
Totals	26,450	7,760	180,761	172,472
Grand totals			207,211	180,232

TABLE 14. Shipments of Ornamental Nursery Stock, 1963 and 1964
BRITISH COLUMBIA - Continued

Description	Seedlings and liners		Other sizes	
	1963	1964	1963	1964
Ornamental trees				
Acer Platanoides	—	—	240	468
Acer Schwedleri	—	—	—	96
Acer Crimson King	—	—	505	706
Acer Palmatum Var.	—	—	174	503
Acer (Silver Maple)	—	—	608	132
Acer (Sugar Maple)	—	—	90	127
Acer Weirli	—	—	15	55
Acer Negundo	—	—	560	181
Acer (other)	—	—	288	259
Betula (White Birch)	—	—	3,073	2,064
Betula Laciniata (C.L.W.B.)	—	—	2,419	3,843
Betula (other)	—	—	47	247
Catalpa Bungei	—	—	—	—
Catalpa Speciosa	—	—	72	115
Cercidiphyllum (Katsura T.)	—	—	1	—
Cercis (Judas Tree)	—	—	1	27
Crataegus	600	—	685	1,494
Fagus (Beech)	—	—	61	245
Fraxinus (Ash)	—	25	389	1,919
Ginkgo Biloba	15	—	13	104
Gleditsia (Honey Locust)	—	—	—	176
Juglans	—	—	35	70
Liriodendron (Tulip Tree)	—	—	43	174
Magnolia	—	—	113	290
Malus	—	—	3,503	5,250
Morus (Mulberry)	—	—	10	26
Platanus	—	—	15	264
Populus (Carolina)	—	—	651	761
Populus (Lombardy)	—	—	794	1,452
Populus (other)	—	—	465	806
Prunus	600	—	3,348	2,959
Quercus (Oak)	—	3	103	280
Salix (Golden W. Willow)	—	—	462	1,079
Sorbus (Mountain Ash)	—	—	2,257	1,040
Tilia (Basswood)	—	—	39	40
Ulmus (Chinese Elm)	—	—	540	4,080
Ulmus (Elm)	—	—	115	355
Others	—	—	2,029	1,502
Totals	1,215	28	23,763	33,189
Grand totals			24,978	33,217
Broad-leaved evergreens				
Andromeda (Pieris)	—	—	1,584	1,181
Azaleas	4,100	—	3,619	7,018
Berberis	—	—	901	844
Buxus	—	—	1,604	1,366
Cotoneaster	—	—	1,254	1,518
Daphne	50	2	860	518
Euonymus	—	—	383	363
Hedera	—	4,000	69	785
Ilex	500	—	566	656
Mahonia	—	—	609	450
Pachistima	—	—	—	500
Pachysandra	300	2,000	1,757	600
Pieris	—	—	135	72
Pyracantha	100	4	902	330

**TABLE 14. Shipments of Ornamental Nursery Stock, 1963 and 1964
BRITISH COLUMBIA - Concluded**

Description	Seedlings and liners		Other sizes	
	1963	1964	1963	1964
	number			
Broad-leaved evergreens - Continued				
Rhododendron.....	2,000	2	3,578	3,014
Viburnum.....	—	—	221	435
Vinca.....	2,500	3,500	7,030	1,634
Yucca.....	—	1	551	500
Others.....	570	3	60,181	692
Totals.....	10,120	9,512	85,804	22,476
Grand totals.....			95,924	31,988
Vines and creepers				
Ampelopsis.....	—	—	672	581
Aristolochia.....	—	—	16	46
Bignonia.....	—	—	3	37
Celastrus.....	—	—	32	66
Clematis.....	—	—	804	2,041
Hedera.....	—	—	1,003	228
Lonicera.....	—	1	217	240
Polygonum.....	—	—	28	39
Wistaria.....	—	1	240	242
Others.....	—	5	10	6
Totals.....	—	7	3,025	3,526
Grand totals.....			3,025	3,533
Roses (shrub or bush)				
Climbers.....			7,952	22,185
Hybrid Teas.....			57,677	106,100
Multifloras.....			700	100
Perpetuals.....			7,100	3,001
Polyanthas and Floribundas.....			9,850	37,251
Rugosas and Briars.....			3,000	1,906
Others.....			—	—
Totals.....			86,279	170,543
Roses (on standards)				
Hybrid Teas.....			4,186	327
Totals.....			4,186	327
Area in ornamental nursery stock to the nearest acre			153.0	210.5
Value of sales at wholesale of ornamental stock for year ending December 31..... \$			277,589	333,995

TABLE 15. Shipments of Fruit Nursery Stock, 1963 and 1964
BRITISH COLUMBIA

Description	One year		Two years and up	
	1963	1964	1963	1964
	number			
Apple trees on seedlings rootstocks				
Delicious Red.....	2,340	1,140	173	256
Delicious Golden.....	242	318	112	347
McIntosh Red.....	5,525	5,620	292	1,662
Spartan.....	2,000	1,550	185	925
Spy.....	—	—	512	60
Winesap.....	—	—	200	—
Yellow Transparent.....	445	685	251	237
Melba and Red Sport.....	—	10	202	62
Others.....	1,200	1,708	60	5,230
Totals.....	11,752	11,031	1,987	8,779
Grand totals.....			13,739	19,810
Apple trees on rootstock East Malling I and East Malling II				
Delicious Red.....	2,105	98	72	2,090
Delicious Golden.....	1,470	—	3	1,345
McIntosh Red.....	5,623	335	57	3,026
Melba and Red Sport.....	—	—	—	—
Spartan.....	4,700	290	180	3,200
Spy.....	—	—	—	26
Winesap.....	75	—	5	152
Yellow Transparent.....	—	—	20	34
Others.....	1,414	—	15	1,050
Totals.....	15,387	723	352	10,923
Grand totals.....			15,739	11,646
Apple trees on rootstock East Malling VII				
Delicious Red.....	1,100	—	50	511
Delicious Golden.....	500	—	171	382
McIntosh Red.....	1,600	—	360	1,200
Melba and Red Sport.....	—	—	115	35
Spartan.....	1,800	—	180	2,010
Spy.....	—	—	1,300	40
Winesap.....	—	—	5	3
Yellow Transparent.....	195	—	330	233
Others.....	4,702	4,000	53,290	3,901
Totals.....	9,897	4,000	55,801	8,315
Grand totals.....			65,698	12,315
Apple trees on rootstock East Malling IX				
Delicious Red.....	338	35	32	471
Delicious Golden.....	390	—	15	640
McIntosh Red.....	342	18	1,620	477
Melba and Red Sport.....	—	—	10	—
Spartan.....	268	20	25	650
Spy.....	—	—	10	10
Winesap.....	—	—	—	—
Yellow Transparent.....	90	53	48	172
Others.....	—	—	69	560
Totals.....	1,428	126	1,829	2,980
Grand totals.....			3,257	3,106

TABLE 15. Shipments of Fruit Nursery Stock, 1963 and 1964
BRITISH COLUMBIA - Continued

Description	One year		Two years and up	
	1963	1964	1963	1964
	number			
Apple trees on Malus Robusta No. 5				
McIntosh Red	—	—	250	—
Others	—	—	250	—
Total	—	—	500	—
Apple trees on other rootstock				
Totals	11,100	7,460	2,255	60,328
Grand totals			13,355	67,788
Peach trees				
Elberta	—	—	10	1
Golden Jubilee	240	—	141	136
Red Haven	1,020	10	26	1,268
Veteran and other varieties	3,850	3,010	1,306	407
Totals	5,110	3,020	1,483	1,812
Grand totals			6,593	4,832
Pear trees				
Anjou	2,739	263	538	499
Bartlett	4,622	620	1,129	1,803
Others	3,620	3,490	2,643	3,600
Totals	10,981	4,373	4,310	5,902
Grand totals			15,291	10,275
Plum trees				
Early Golden	—	—	—	270
Early Italian	1,250	280	109	612
Italian Prune	150	20	856	505
Stanley Prunes	—	—	506	—
Others	2,100	2,131	515	3,655
Totals	3,500	2,431	1,986	5,042
Grand totals			5,486	7,473
Nut trees				
Chestnut	—	—	18	29
Filbert	—	—	114	210
Walnut (English)	—	5	179	80
Others	—	—	—	141
Totals	—	5	311	460
Grand totals			311	465
Red raspberries				
Latham			20,300	2,650
Newburg			60,350	11,800
Viking			20,050	300
Others			1,712	26,110
Totals			102,412	40,860
Grand totals			102,412	40,860

TABLE 15. Shipments of Fruits Nursery Stock, 1963 and 1964
BRITISH COLUMBIA - Concluded

Description	One year		Two years and up	
	1963	1964	1963	1964
	number			
Cherry trees				
Bing	1,245	208	1,484	917
Black Tartarian	30	-	15	-
Lambert	1,451	450	858	627
Montmorency	482	133	230	83
Sam	615	86	300	361
Van	709	194	526	778
Others	2,040	2,005	2,149	2,431
Totals	6,572	3,076	5,562	5,197
Grand totals			12,134	8,273
Quince trees				
	-	-	-	-
Dwarf pear trees				
	385	20	30	446
Nectarine trees				
	700	200	-	37
Apricot trees				
	258	900	253	269
Other small fruit species and miscellaneous				
Black raspberries			35	20
Blackberry bushes			-	-
Gooseberry bushes			376	545
Black currant bushes			396	1,262
Red currant bushes			372	560
Boysenberry bushes			5	31
Loganberry bushes			5	40
Other berry bushes			-	25
Purple raspberries			-	140
Strawberries plants			1,021,320	804,712
Asparagus roots			18	33
Horseradish roots			15	-
Rhubarb roots			231	257
Grape vines				
Catawba			-	-
Delaware			155	-
Elvira			-	-
Concord			50	27
Niagara			20	32
Seibel 10878			-	1,500
Fredonia			58	208
Van Buren			10	70
Buffalo			65	17
Seibel 9110			-	5
Other French Hybrids			5	11,351
Others			95	45
Totals			458	13,255
Grand totals			458	13,255
Area in fruit nursery stock to the nearest acre			70.2	63.0
Value of sales wholesale of fruit nursery stock for year ending December 31			121,078	135,112





STATISTICS CANADA LIBRARY
BIBLIOTHÈQUE STATISTIQUE CANADA



1010518625