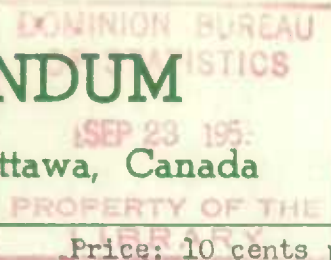


23-004

D.B.S. MEMORANDUM

Dominion Bureau of Statistics, Ottawa, Canada

1953 No. 4



REPORT ON THE LIVE STOCK SURVEY OF JUNE 1, 1953

CATTLE - SHEEP - HORSES

Estimates of the number of cattle, sheep and horses on farms in Canada^{1/} at June 1, 1953 are based on farmers' replies to the annual June sample survey conducted by mail in cooperation with Provincial Departments of Agriculture.

Cattle: The upward trend in numbers of cattle on farms continued during the past year in all provinces but Manitoba and the estimated 9,713,600 head at June 1, 1953 was about 6 per cent above the total at June 1, 1952. Increases in Eastern Provinces amounted to 7 per cent compared with 5 per cent in the West. Cows kept for milking purposes were also up 6 per cent, decreases having occurred only in Manitoba and Saskatchewan. Thus, for the immediate outlook, these estimates should signify a sustained high level of beef, veal and milk production.

Sheep: Sheep and lamb numbers also continued to increase and the estimate of 1,721,300 is about 9 per cent above the total of 1,588,200 at June 1, 1952. Only in Manitoba did the sample fail to indicate an increase.

Horses: Numbers of horses on farms continue to decline. Estimated at 1,096,200, the total for Canada was about 7 per cent below that at June 1, 1952.

^{1/} Not including Newfoundland for which the latest official data are those of the 1951 Census of Agriculture which showed, to the nearest hundred, 4,100 milk cows and heifers, 3,900 other cattle, 17,500 sheep and 2,900 horses on farms and 3,300 milk cows and heifers, 2,600 other cattle, 56,100 sheep, 10,500 horses and 1,300 hogs kept elsewhere than on farms.

Live Stock on Farms in Canada at June 1, 1952 and 1953

Cattle and Calves

Province	1952			1953			Total 1953 as % of 1952
	Milk Cows <u>1/</u>	Other Cattle	Total	Milk Cows <u>1/</u>	Other Cattle	Total	
- thousand head -							
Prince Edward Island	41.0	63.9	104.9	44.0	70.0	114.0	109
Nova Scotia	83.0	102.7	185.7	88.0	114.0	202.0	109
New Brunswick	86.0	91.9	177.9	95.0	98.4	193.4	109
Quebec	937.0	871.0	1,808.0	1,016.2	903.6	1,919.8	106
Ontario	959.0	1,778.0	2,737.0	1,040.0	1,893.4	2,933.4	107
Total East	2,106.0	2,907.5	5,013.5	2,283.2	3,079.4	5,362.6	107
Manitoba	209.0	476.0	685.0	195.0	459.0	654.0	95
Saskatchewan	289.0	1,093.0	1,382.0	285.0	1,150.0	1,435.0	104
Alberta	280.0	1,474.0	1,754.0	289.0	1,621.0	1,910.0	109
British Columbia	84.0	254.2	338.2	94.0	258.0	352.0	104
Total West	862.0	3,297.2	4,159.2	863.0	3,488.0	4,351.0	105
Total Canada	2,968.0	6,204.7	9,172.7	3,146.2	6,567.4	9,713.6	106

1/ Cows and heifers 2 years old and over kept for milk purposes.

Live Stock on Farms in Canada at June 1, 1952 and 1953

Sheep and Lambs

Province	1952			1953			Total 1953 as % of 1952
	Sheep over 1 year old	Lambs	Total	Sheep over 1 year old	Lambs	Total	
- thousand head -							
P.E.I.	18.7	17.5	36.2	18.7	20.0	38.7	107
N.S.	44.1	39.6	83.7	50.3	44.7	95.0	114
N.B.	29.1	25.9	55.0	33.1	31.2	64.3	117
Que.	171.8	165.3	337.1	177.1	183.7	360.8	107
Ont.	194.5	195.2	389.7	204.5	210.0	414.5	106
Total East	458.2	443.5	901.7	483.7	489.6	973.3	108
Man.	34.9	33.1	68.0	32.4	32.6	65.0	96
Sask.	84.0	71.0	155.0	91.0	79.0	170.0	110
Alta.	212.0	175.0	387.0	240.4	191.6	432.0	112
B.C.	39.5	37.0	76.5	41.6	39.4	81.0	106
Total West	370.4	316.1	686.5	405.4	342.6	748.0	109
Total Canada	828.6	759.6	1,588.2	889.1	832.2	1,721.3	109

Horses

Province	1952	1953	1953 as % of 1952
P.E.I.	19,700	19,000	96
N.S.	24,400	23,400	96
N.B.	29,800	29,000	97
Que.	221,000	218,000	99
Ont.	218,700	202,200	92
Man.	113,500	96,800	85
Sask.	279,500	255,500	91
Alta.	239,700	222,000	93
B.C.	34,100	30,300	89
Canada	1,180,400	1,096,200	93

STATISTICS CANADA LIBRARY
BIBLIOTHÈQUE STATISTIQUE CANADA



1010769945