

Issued January 24th 1933.

Published by Authority of the Hon. H. H. Stevens, M.P.,  
Minister of Trade and CommerceDOMINION BUREAU OF STATISTICS, OTTAWA, CANADA  
Dairy Factory Statistics SectionDominion Statistician: R. H. Coats, B.A., F.S.S. (Hon.), F.R.S.C.  
Chief, Dairy Factory Statistics Section: Florence A. Brown.CONCENTRATED MILK PRODUCTION, CANADA, DECEMBER, 1932.

Statistics of the production of concentrated milk in Canada in December, 1932, are based on returns furnished by the 26 firms whose factories manufactured during the month any of the various items listed under the general classification of "concentrated milk", i. e., condensed milk, evaporated milk, milk powder, etc.

Production.- The total output of concentrated milk in December, 1932, covering all items, was 5,265,566 pounds, an increase over the preceding month of 82,173 pounds, or 1½ per cent, and an increase over December, 1931, of 1,773,362 pounds, or 51 per cent. The most noticeable increases over 1931 were in the quantities of condensed milk and evaporated milk.

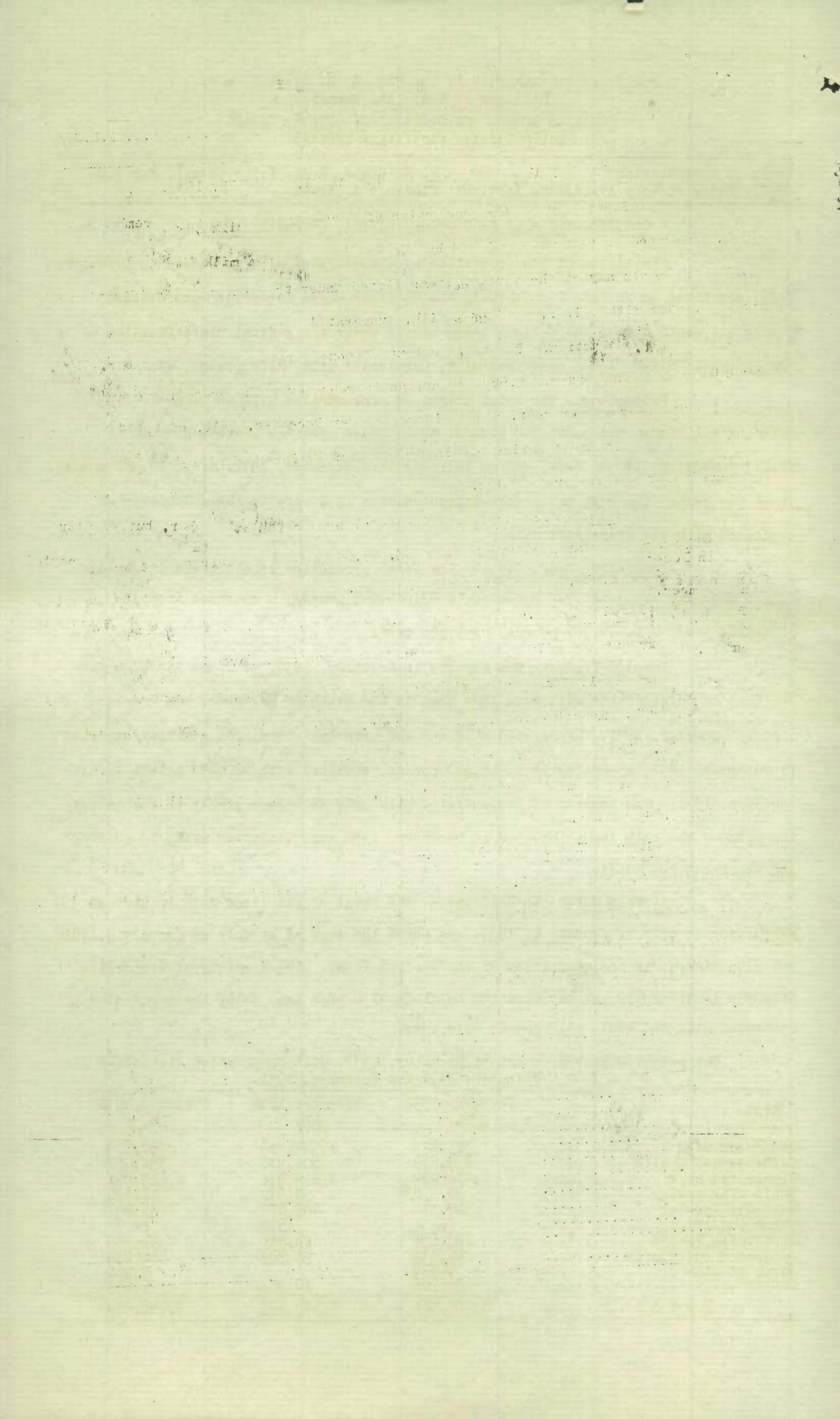
Cumulative Production.- The total production of all items of concentrated milk for the year 1932 amounted to 83,689,045 pounds, a decrease from the preceding year of 1,004,367 pounds, or 1 per cent.

Foreign Trade.- The exports in December, 1932, of items listed under the head of concentrated milk were less than in the month of November, but greater than in December, 1931. Evaporated milk was the principal item, the quantity exported in December, 1932, amounting to 1,516,300 pounds, compared with 422,800 pounds in December, 1931. The imports of concentrated milk have decreased almost to the vanishing point - the only items imported in December, 1932 were condensed milk, 12 pounds, and casein, 3,249 pounds.

Storage Warehouse Holdings.- The total of all items held in Storage Warehouses at date of January 1, 1933, was about the same as at date of January 1, 1932, but with changes in the quantities of the various items. The quantity of evaporated milk was considerably greater than the holdings of a year ago, while the quantities of condensed milk and whole milk powder were less.

## 1. Concentrated Milk Production, December, 1932, with Comparative Statistics for November, 1932 and December, 1931.

Kind	: December, 1932	: November, 1932	: December, 1931
	: Lb.	: Lb.	: Lb.
Condensed milk .....	1,385,473	1,347,764	780,604
Condensed skim milk .....	265,679	304,470	394,010
Evaporated milk .....	2,872,464	2,619,471	1,519,201
Whole milk powder .....	20,270	38,670	12,870
Skim milk powder .....	517,332	745,072	634,407
Cream powder .....	-	970	-
Buttermilk Powder .....	120,635	76,926	94,585
Condensed buttermilk .....	46,033	39,577	41,498
Sugar of milk .....	4,974	-	5,396
Casein .....	32,706	10,473	9,633
T O T A L .....	5,265,566	5,183,393	3,492,204



2. Cumulative Production of Concentrated Milk for the twelve months ended December 31, 1932, with Comparative Statistics for the twelve months ended December 31, 1931.

Kind	1 9 3 2 Lbs.	1 9 3 1 Lbs.
Condensed milk .....	14,292,544	14,806,406
Condensed skim milk .....	4,914,352	4,209,357
Evaporated milk .....	48,778,531	45,183,293
Evaporated skim milk .....	17,620	265,109
Whole milk powder .....	1,034,318	2,535,448
Skim milk powder .....	11,894,662	13,253,088
Cream powder .....	26,206	39,058
Buttermilk powder .....	1,862,408	2,029,933
Condensed buttermilk .....	519,167	1,528,884
Sugar of milk .....	92,985	124,122
Casein .....	256,252	718,714
<b>T O T A L</b> .....	<b>83,689,045</b>	<b>84,693,412</b>

3. Production by Months of the Three Principal Items, viz., Condensed Milk, Evaporated Milk, and Skim Milk Powder, for the period January to December, 1932.

	Condensed Milk Lb.	Evaporated Milk Lb.	Skim Milk Powder Lb.
January .....	736,106	1,853,568	665,603
February .....	852,613	2,199,603	687,060
March .....	1,045,080	3,713,340	792,209
April .....	1,101,776	4,872,139	1,075,301
May .....	913,244	6,270,856	1,174,483
June .....	979,208	6,947,417	1,686,509
July .....	1,495,157	5,307,451	1,239,482
August .....	1,666,489	5,173,411	1,281,641
September .....	1,418,787	3,958,799	1,175,688
October .....	1,350,847	2,990,012	854,282
November .....	1,347,764	2,619,471	745,072
December .....	1,385,473	2,872,464	517,332

4. Imports and Exports of Concentrated Milk Products, December, 1932 with Comparative Statistics for November, 1932 and December, 1931. X

	Quantity Imported			Quantity Exported		
	December 1932 Lb.	November 1932 Lb.	December 1931 Lb.	December 1932 Lb.	November 1932 Lb.	December 1931 Lb.
Condensed Milk .....	12	1,575	2,331	424,300	602,700	408,400
Evaporated milk .....	-	-	-	1,516,300	1,675,100	422,800
Milk powder .....	-	6,018	15,909	281,300	401,400	528,300
Casein .....	3,249	838	28,164	-	-	-

5. Concentrated Milk Products in Cold Storage Warehouses, January 1, 1933, with Comparative Statistics for December 1, 1932 and January 1, 1932. XX

	January 1, 1933 Lb.	December 1, 1932 Lb.	January 1, 1932 Lb.
Condensed milk .....	816,878	763,878	1,072,807
Condensed skim milk .....	326,718	385,633	209,707
Evaporated milk .....	9,017,231	8,345,031	7,901,991
Whole milk powder .....	706,876	781,422	1,538,965
Skim milk powder .....	1,988,432	2,193,137	2,099,547
Cream powder .....	-	12,335	122,783
Casein .....	223,976	308,905	383,382

X External Trade Report - "Imports and Exports of Milk and Its Products and Eggs."

XX Agricultural Branch - "Cold Storage Holdings in Canada."

STATISTICS CANADA LIBRARY  
BIBLIOTHÈQUE STATISTIQUE CANADA



1010739738