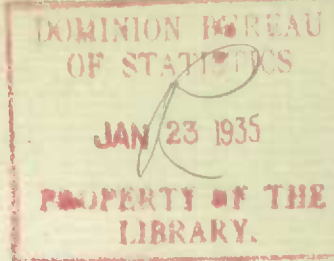


Issued January 22nd, 1936

Published by Authority of the HON. W. D. Euler, M.P.
Minister of Trade and Commerce

DOMINION BUREAU OF STATISTICS, OTTAWA, CANADA
Dairy Factory Statistics Branch



Dominion Statistician: R.H. Coats, LL.D., F.R.S.C., F.S.S. (Hon.)
Chief, Dairy Factory Statistics Branch: Florence A. Brown

PRODUCTION OF CONCENTRATED MILK, CANADA, DECEMBER, 1935.

Statistics of the production of concentrated milk in Canada in December, 1935, are based on returns from the 32 companies whose factories manufactured during the month any of the various items classified as "concentrated milk", i.e., condensed milk, evaporated milk, milk powder, etc.

Production.- The total production in December of all items combined was 5,182,377 pounds, a decrease from the preceding month of 613,225 pounds, or 11 per cent, but an increase over December, 1934, of 582,063 pounds, or 13 per cent. The principal item contributing to the increase over December, 1934, is evaporated milk. Skim milk powder records a decrease, as does also condensed milk. In every month of the present year, excepting January and October, total production has exceeded that of the corresponding month in 1934.

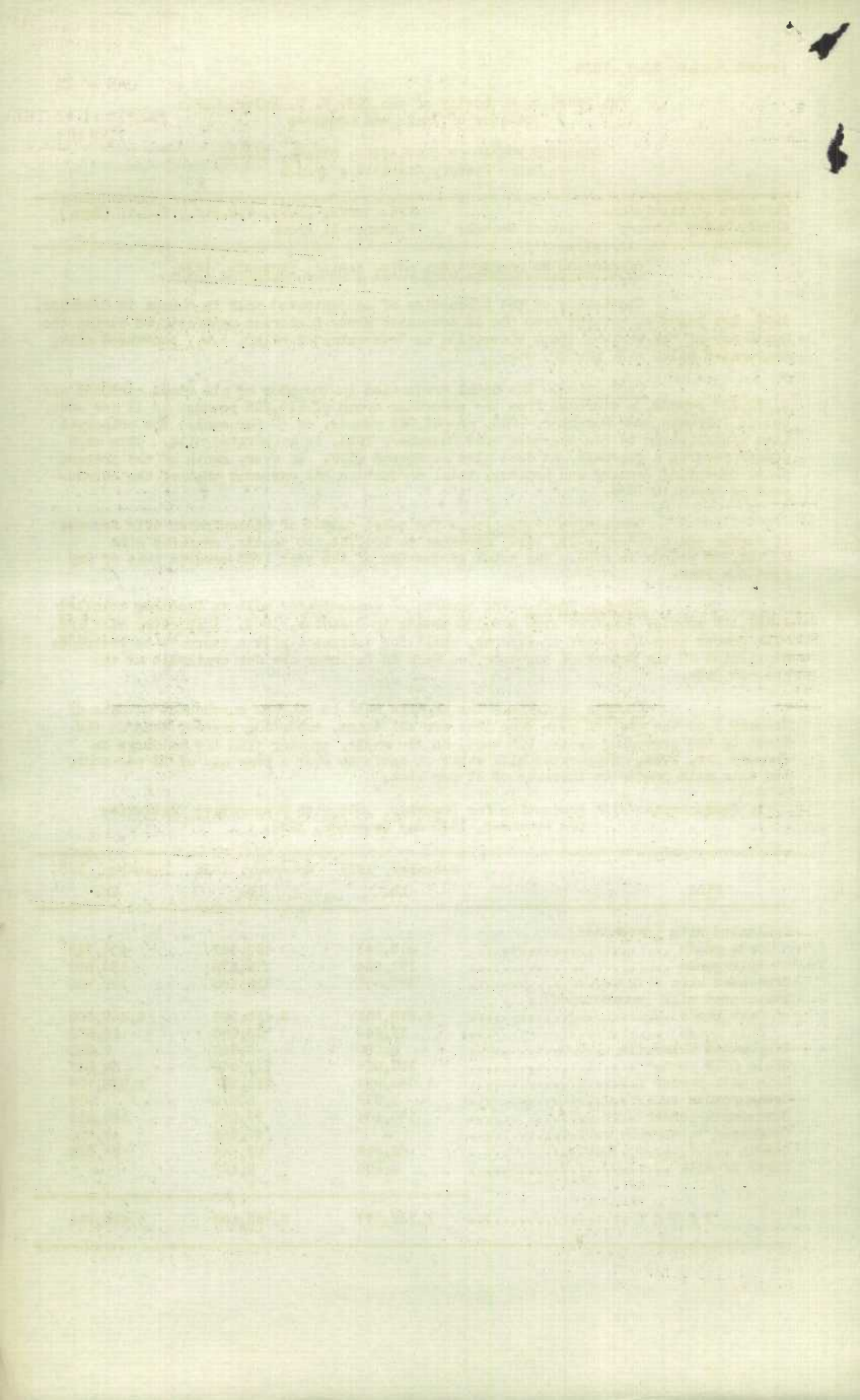
Cumulative Production.- The total output of concentrated milk for the 12 months ended December 31, 1935, amounted to 104,752,550 pounds, compared with 93,592,856 pounds in 1934. The total production of the year 1935 exceeds that of any previous year.

Foreign Trade.- The exports of concentrated milk in December totalled 1,131,100 pounds, compared with 888,100 pounds in December, 1934. Evaporated milk and milk powder show increases in exports, while for condensed milk a decrease is recorded. Statistics of the import of concentrated milk in December are not available at the present date.

Storage Holdings.- The amounts held in storage warehouses at date of January 1 of the present year were less for all items, excepting casein, than at the first of the preceding month, but were, on the whole, greater than the holdings on January 1st, 1935. Evaporated milk shows an increase over a year ago of 23 per cent, and skim milk powder an increase of 19 per cent.

1. Concentrated Milk Production for December, 1935, with Comparative Statistics for November, 1935 and December, 1934.

Kind	December, 1935 Lb.	November, 1935 Lb.	December, 1934 Lb.
Condensed milk (sweetened) :			
Case goods	310,143	497,547	470,745
Bulk goods	191,664	275,272	130,506
Condensed skim milk	367,891	322,186	169,704
Evaporated milk (unsweetened) :			
Case goods	2,912,531	3,453,587	2,469,000
Bulk goods	17,644	15,080	13,076
Evaporated skim milk	8,000	6,940	7,300
Whole milk powder	109,959	117,648	59,347
Skim milk powder	1,044,954	933,287	1,056,709
Cream powder	1,979	1,210	917
Buttermilk powder	150,104	93,001	140,629
Condensed buttermilk	-	47,852	47,015
Casein	62,618	22,865	35,366
Sugar of milk	4,890	9,127	-
T O T A L	5,182,377	5,795,602	4,600,314



2. Cumulative Production of Concentrated Milk for the Twelve Months Ended December 31, 1935, with Comparative Statistics for the Twelve Months ended December 31, 1934.

Kind	Twelve Months ended December 31:	
	1935	1934
	Lb.	Lb.
Condensed milk:		
Case goods	5,683,466	6,331,107
Bulk goods	3,227,778	2,585,006
Condensed skim milk	3,981,593	4,752,473
Evaporated milk:		
Case goods	66,220,181	56,597,108
Bulk goods	212,570	181,092
Evaporated skim milk	139,622	52,000
Whole milk powder	2,421,093	2,111,182
Skim milk powder	18,671,798	16,576,452
Cream powder	24,109	37,333
Buttermilk powder	2,602,791	2,418,756
Condensed buttermilk	356,424	286,107
Casein	1,067,055	1,512,637
Sugar of milk	144,070	151,603
T O T A L	104,752,550	93,592,856

3. Production by Months of Condensed Milk, Evaporated Milk and Skim Milk Powder for the period January to December, 1935.

	Condensed Milk		Evaporated Milk		Skim Milk Powder
	Case goods	Bulk goods	Case goods	Bulk goods	
	Lb.	Lb.	Lb.	Lb.	
January	378,048	202,647	2,629,541	24,750	969,405
February	437,172	237,741	2,674,280	11,845	844,414
March	531,810	290,911	4,803,300	9,140	1,129,728
April	607,554	228,986	7,357,331	22,017	1,596,597
May	448,040	296,937	7,903,565	9,464	1,944,473
June	612,786	271,556	8,953,862	31,280	2,620,483
July	565,473	268,789	7,217,530	12,730	2,290,847
August	382,251	273,147	6,801,884	17,768	2,123,544
September	442,029	313,283	6,261,264	25,272	1,833,853
October	470,613	376,845	5,251,506	15,580	1,340,213
November	497,547	275,272	3,453,587	15,080	933,287
December	310,143	181,664	2,912,531	17,644	1,044,954

4. Imports and Exports of Concentrated Milk Products, December, 1935 with Comparative Statistics for November, 1935 and December, 1934 (a).

	Quantity Imported			Quantity Exported		
	December 1935	November 1935	December 1934	December 1935	November 1935	December 1934
	Lb.	Lb.	Lb.	Lb.	Lb.	Lb.
Condensed milk	(b)	1,470	550	102,600	242,600	142,900
Evaporated milk	-	-	-	538,600	1,660,100	498,000
Milk powder	(b)	1,668	317	489,900	591,100	247,200
Casein	(b)	25,831	16,663	-	-	-

5. Concentrated Milk Products in Cold Storage Warehouses, January 1, 1936 with Comparative Statistics for December 1, 1935 and January 1, 1935 (c)

Kind	January 1, 1936	December 1, 1935	January 1, 1935
	Lb.	Lb.	Lb.
Condensed milk	457,701	494,401	525,161
Condensed skim milk	452,904	505,628	460,137
Evaporated milk	9,356,829	9,598,354	7,608,139
Whole milk powder	591,614	945,360	608,330
Skim milk powder	1,814,661	2,936,438	1,527,071
Cream powder	8,202	8,231	17,076
Casein	276,525	267,480	272,504

(a) External Trade Report - "Imports and Exports of Milk and Its Products and Eggs".

(b) Not yet available.

(c) Agricultural Branch - "Cold Storage Holdings in Canada".

STATISTICS CANADA LIBRARY
BIBLIOTHEQUE STATISTIQUE CANADA



1010739773