

Issued May 20th, 1936.

Published by Authority of the Hon. W. D. Euler, M.P.,  
Minister of Trade and CommerceDOMINION BUREAU OF STATISTICS, OTTAWA, CANADA  
Dairy Factory Statistics Branch

Dominion Statistician:	R. H. Coats, LL.D., F.R.S.C., F.S.S. (Hon.)
Chief, Dairy Factory Statistics Branch:	Florence A. Brown

PRODUCTION OF CONCENTRATED MILK, CANADA, APRIL, 1936

Statistics of the production of concentrated milk in April, 1936, are based on returns from the 34 firms whose factories manufactured during the month any of the various items included in the classification "concentrated milk", i.e., condensed milk, evaporated milk, milk powder, or other.

Production.- The combined production of all items of concentrated milk in April totalled 8,877,281 pounds, an increase over the preceding month of 2,041,611 pounds, or 30 per cent, but a decrease from April, 1935, of 1,765,788 pounds, or 17 per cent. The principal items show reductions from April of last year, as follows: evaporated milk, a decrease of 20 per cent; skim milk powder, of 18 per cent; and condensed milk, of 31 per cent.

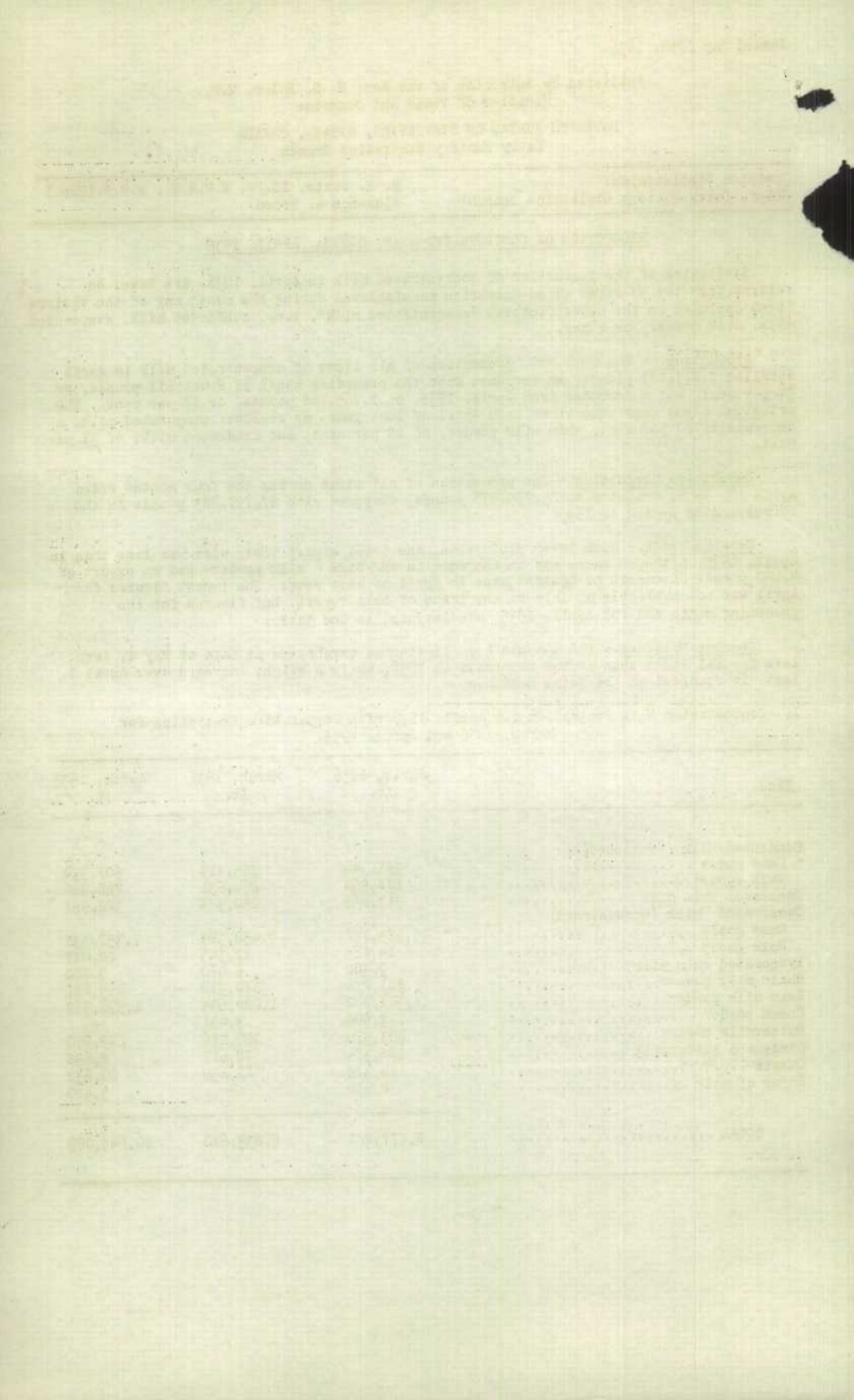
Cumulative Production.- The production of all items during the four months ended April 30, 1936, amounted to 25,755,956 pounds, compared with 27,797,883 pounds in the corresponding period of 1935.

Foreign Trade.- With lower production, the total export trade also was less than in April, 1935, although there was an increase in one item - milk powder- and an export of 4,000 pounds of casein as against none in April of last year. The import figures for April are not available at date of the issue of this report, but figures for the preceding month and for April, 1935, are included in the table.

Storage Holdings.- The amounts held in storage warehouses at date of May 1, were less for all items than at the same date in 1935, while a slight increase over April 1, last, is recorded in the total holdings.

## 1. Concentrated Milk Production for April, 1936 with Comparative Statistics for March, 1936 and April, 1935.

Kind	April, 1936 Lb.	March, 1936 Lb.	April, 1935 Lb.
<b>Condensed Milk (sweetened):</b>			
Case goods .....	391,344	395,418	607,554
Bulk goods .....	188,564	264,631	228,986
Condensed skim milk .....	313,639	250,328	322,957
<b>Evaporated milk (unsweetened)</b>			
Case goods .....	5,923,752	4,452,383	7,357,331
Bulk goods .....	14,865	17,343	22,017
Evaporated skim milk .....	9,300	6,460	9,700
Whole milk powder .....	301,274	170,310	155,287
Skim milk powder .....	1,301,842	1,024,604	1,596,597
Cream powder .....	3,599	3,491	-
Buttermilk powder .....	203,370	129,226	249,900
Condensed buttermilk .....	108,374	78,617	8,698
Casein .....	114,378	42,859	80,632
Sugar of milk .....	2,980	-	3,410
<b>TOTAL .....</b>	<b>8,877,281</b>	<b>6,835,670</b>	<b>10,643,069</b>



2. Cumulative Production of Concentrated Milk for the Four Months Ended April 30, 1936, with Comparative Statistics for the Four Months Ended April 30, 1935.

Kind	Four Months Ended April, 30.	
	1936 Lb.	1935 Lb.
Condensed Milk: (sweetened)		
Case goods .....	1,536,422	1,954,584
Bulk goods .....	823,190	960,285
Condensed skim milk .....	1,261,322	1,292,231
Evaporated milk: (unsweetened)		
Case goods .....	16,110,967	17,464,452
Bulk goods .....	70,369	67,752
Evaporated skim milk .....	27,808	31,282
Whole milk powder .....	603,893	481,420
Skim milk powder .....	4,219,213	4,540,144
Cream powder .....	15,905	3,817
Buttermilk powder .....	586,403	659,154
Condensed buttermilk .....	277,834	151,868
Casein .....	215,365	183,984
Sugar of milk .....	7,265	6,910
TOTAL .....	25,755,956	27,797,883

3. Production by Months of Condensed Milk, Evaporated Milk and Skim Milk Powder for the period January to April, 1936.

	Condensed Milk		Evaporated Milk		Skim Milk Powder Lb.
	Case goods Lb.	Bulk goods Lb.	Case goods Lb.	Bulk goods Lb.	
January	410,957	177,354	2,696,802	12,391	1,058,806
February	338,703	192,641	3,038,030	25,770	833,961
March	395,418	264,631	4,452,383	17,343	1,024,604
April	391,344	188,564	5,923,752	14,865	1,301,842

4. Imports and Exports of Concentrated Milk Products, April, 1936, with Comparative Statistics for March, 1936, and April, 1935 (a)

Kind	Quantity Imported			Quantity Exported		
	April 1936 Lb.	March 1936 Lb.	April 1935 Lb.	April 1936 Lb.	March 1936 Lb.	April 1935 Lb.
Condensed milk	(b)	8,570	1,120	61,100	170,500	148,500
Evaporated milk	-	-	-	458,200	833,000	1,041,800
Milk powder	(b)	9,814	4,205	335,900	577,900	280,000
Casein	(b)	2,494	126	4,000	-	-

5. Concentrated Milk Products in Cold Storage Warehouses, May 1, 1936 with Comparative Statistics for April, 1, 1936 and May 1, 1935 (c)

Kind	May 1, 1936 Lb.	April 1, 1936 Lb.	May 1, 1935 Lb.
Condensed milk	502,051	580,379	640,735
Condensed skim milk	148,033	194,828	424,275
Evaporated milk	4,880,599	4,445,773	5,666,521
Whole milk powder	486,500	454,722	489,542
Skim milk powder	880,428	941,639	1,022,736
Cream powder	5,547	7,351	12,640
Casein	112,185	134,505	197,512

- (a) External Trade Report - "Imports and Exports of Milk and Its Products and Eggs".
- (b) Not yet available.
- (c) Agricultural Branch - "Cold Storage Holdings in Canada".

STATISTICS CANADA LIBRARY  
BIBLIOTHEQUE STATISTIQUE CANADA



1010739777