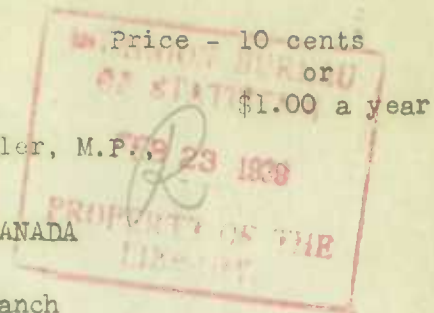


Issued February 22, 1939

Published by Authority of the Hon. W. D. Buler, M.P.,  
Minister of Trade and Commerce

DOMINION BUREAU OF STATISTICS, OTTAWA, CANADA  
Census of Industry  
Fisheries, Furs and Dairy Statistics Branch



Dominion Statistician: R. H. Coats, LL.D., F.R.S.C., F.S.S. (Hon.)  
Chief, Fisheries, Furs and Dairy Statistics Branch: F. A. Brown

PRODUCTION OF CONCENTRATED MILK, CANADA, JANUARY, 1939

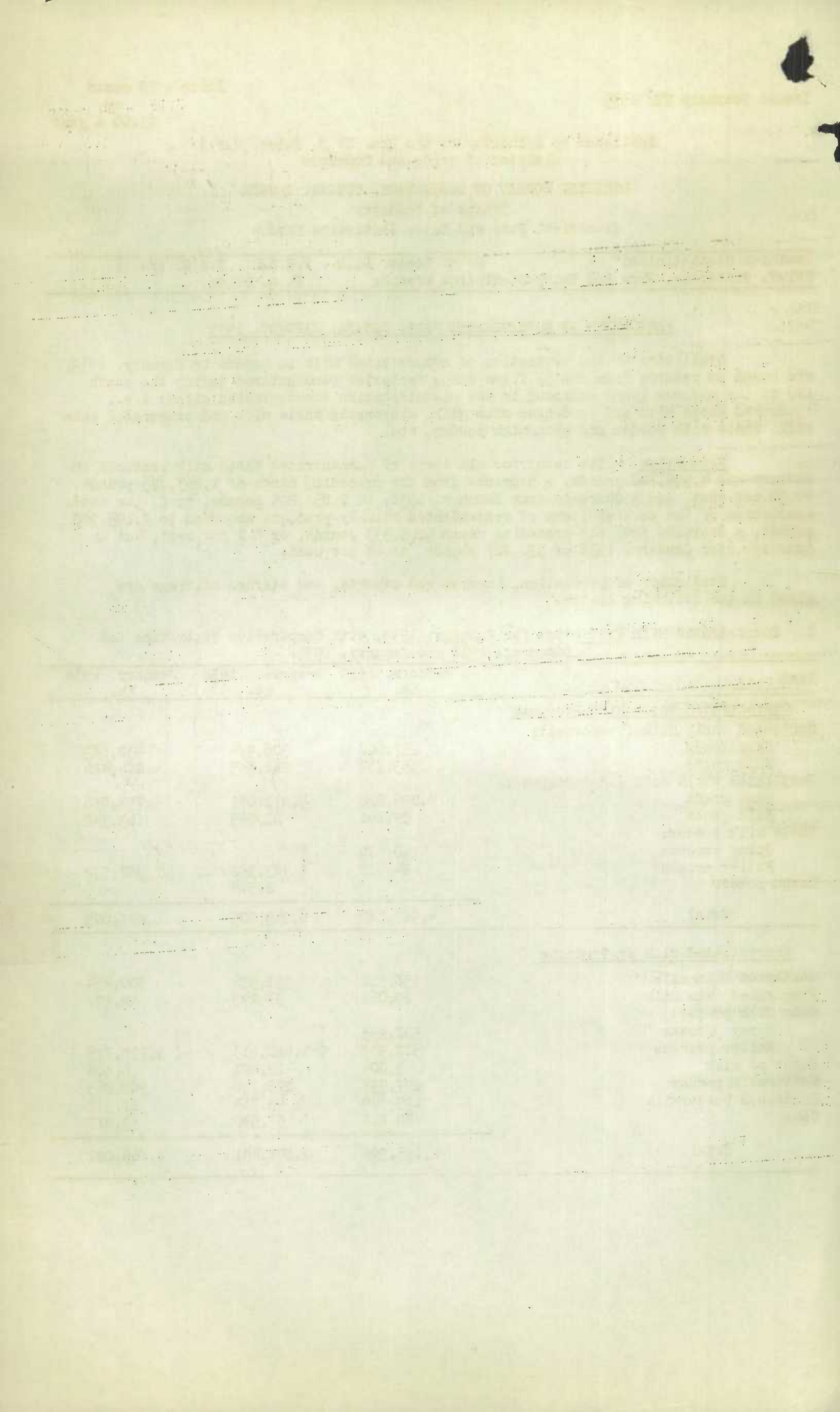
Statistics of the production of concentrated milk in Canada in January, 1939, are based on returns from the 53 firms whose factories manufactured during the month any of the various items embraced in the classification "concentrated milk", i.e., condensed whole milk and condensed skim milk, evaporated whole milk and evaporated skim milk, whole milk powder and skim milk powder, etc.

Production. - The total for all items of concentrated whole milk products in January was 4,985,780 pounds, a decrease from the preceding month of 1,263,225 pounds, or 20 per cent, and a decrease from January, 1938, of 1,859,225 pounds, or 27 per cent. Production of the several items of concentrated milk by-products amounted to 2,195,908 pounds, a decrease from the preceding month of 5,533 pounds, or 0.2 per cent, but an increase over January, 1938 of 330,887 pounds, or 18 per cent.

Statistics of production, imports and exports, and storage holdings are given in the following tables.

1. Concentrated Milk Production for January, 1939, with Comparative Statistics for December, 1938 and January, 1938.

Kind	January, 1939 Lb.	December, 1938 Lb.	January, 1938 Lb.
<u>Concentrated Whole Milk Products</u>			
Condensed whole milk (sweetened):			
Case goods	237,600	306,974	432,689
Bulk goods	353,739	211,945	204,426
Evaporated whole milk (unsweetened):			
Case goods	4,095,020	5,272,071	5,756,016
Bulk goods	34,161	22,089	63,342
Whole milk powder:			
Spray process	180,630	(	(
Roller process	84,630	( 433,352	( 388,532
Cream powder	-	2,574	-
<b>Total</b>	<b>4,985,780</b>	<b>6,249,005</b>	<b>6,845,005</b>
<u>Concentrated Milk By-Products</u>			
Condensed skim milk	158,511	358,526	300,454
Evaporated skim milk	29,061	33,249	49,107
Skim milk powder:			
Spray process	908,233	(	(
Roller process	507,937	( 1,420,613	( 1,079,773
Sugar of milk	9,004	12,401	6,568
Buttermilk powder	297,995	275,798	302,265
Condensed buttermilk	195,349	43,314	87,577
Casein	89,818	57,540	39,277
<b>Total</b>	<b>2,195,908</b>	<b>2,201,441</b>	<b>1,865,021</b>



2. Imports and Exports of Concentrated Milk Products, January, 1939, with Comparative Statistics for December, 1938 and January, 1938. (a)

Kind	Quantity Imported			Quantity Exported		
	January 1939	December 1938	January 1938	January 1939	December 1938	January 1938
	Lb.	Lb.	Lb.	Lb.	Lb.	Lb.
Condensed milk	(b)	125	1,109	92,700	113,200	306,600
Evaporated milk	-	-	-	385,200	781,500	1,381,500
Whole milk powder	(b)	-	44,789	381,600	314,900	478,300
Skim milk powder	(b)	-	-	204,900	-	-
Casein	(b)	1,755	16,877	-	-	-

3. Stocks of Concentrated Milk in Cold Storages, Warehouses, and Dairy Factories February 1, 1939 with Comparative Statistics for January 1, 1939 and February 1, 1938. (c)

Kind	February 1, 1939	January 1, 1939	February 1, 1938
	Lb. (d)	Lb. (d)	Lb. (d)
<u>Concentrated Whole Milk Products</u>			
Condensed whole milk	1,020,390	1,227,394	469,351
Evaporated whole milk	13,270,507	15,079,004	8,790,643
Whole milk powder:			
Spray process	1,082,877	1,357,472	(
Roller process	176,097	27,959	( 416,123
Cream powder	7,224	7,860	4,180
<b>Total</b>	<b>15,557,095</b>	<b>17,699,689</b>	<b>9,680,297</b>
<u>Concentrated Milk By-Products</u>			
Condensed skim milk	472,699	449,789	141,178
Evaporated skim milk	7,200	8,797	7,876
Skim milk powder:			
Spray process	3,238,187	3,959,237	(
Roller process in bags	1,243,996	1,297,236	( 1,181,168
" " " bbl.	1,196,089	974,579	(
Buttermilk powder	1,239,519	1,242,844	309,161
Casein	329,426	428,134	118,601
<b>Total</b>	<b>7,727,116</b>	<b>8,360,616</b>	<b>1,757,984</b>

(a) External Trade Report - "Imports and Exports of Milk and Its Products and Eggs".

(b) Not yet available.

(c) Agricultural Branch - "Stocks of Dairy and Poultry Products".

(d) Owned and held by and/or for manufacturers.



1010739810

Faint, illegible text at the top of the page, possibly a header or title area.

Section of faint, illegible text in the middle of the page, possibly a list or table.

Section of faint, illegible text in the lower middle of the page.

Large section of faint, illegible text at the bottom of the page, possibly a body of text or a long list.