

Issued April 25, 1939.

Price - 10 cents
or
\$1.00 a year

Published by Authority of the Hon. W. D. Euler, M.P.,
Minister of Trade and Commerce
DOMINION BUREAU OF STATISTICS, OTTAWA, CANADA
Census of Industry
Fisheries, Furs and Dairy Statistics Branch

Dominion Statistician: R. H. Coats, LL.D., F.R.S.C., F.S.S. (Hon.)
Chief, Fisheries, Furs and Dairy Statistics Branch: F. A. Brown.

PRODUCTION OF CONCENTRATED MILK, CANADA, MARCH, 1939.

Statistics of the production of concentrated milk in Canada in March, 1939, are based on returns from the 53 firms whose factories manufactured during the month any of the various items embraced in the classification "Concentrated milk", i.e., condensed whole milk and condensed skim milk, evaporated whole milk and evaporated skim milk, whole milk powder, skim milk powder, etc.

Production. - The concentrated whole milk products in March had a total poundage of 7,299,672, compared with 9,814,924 in the corresponding month of 1938, while the poundage of the by-products was 2,336,558, compared with 2,212,987.

Statistics of production, imports and exports and storage holdings are given in the following tables.

1. Concentrated Milk Production for March, 1939, with Comparative Statistics for February, 1939 and March, 1938.

Kind	March, 1939 Lb.	February, 1939 Lb.	March, 1938 Lb.
<u>Concentrated Whole Milk Products</u>			
Condensed whole milk (sweetened) :			
Case goods	114,962	265,386	430,053
Bulk goods	371,474	315,186	484,978
Evaporated whole milk (unsweetened) :			
Case goods	6,284,799	3,129,506	8,245,340
Bulk goods	41,395	14,793	65,190
Whole milk powder :			
Spray process	359,246	257,945)	582,449
Roller process	127,796	112,571)	
Cream powder	-	-	6,914
Total	7,299,672	4,095,387	9,814,924
<u>Concentrated Milk By-Products</u>			
Condensed skim milk	180,877	138,329	434,868
Evaporated skim milk	27,240	32,439	65,548
Skim milk powder :			
Spray process	983,792	758,157)	1,354,536
Roller process	602,607	466,521)	
Sugar of milk	10,969	8,219	10,394
Buttermilk powder	213,465	235,177	231,368
Condensed buttermilk	200,047	67,242	67,363
Casein	117,561	108,670	48,910
Total	2,336,558	1,814,754	2,212,987

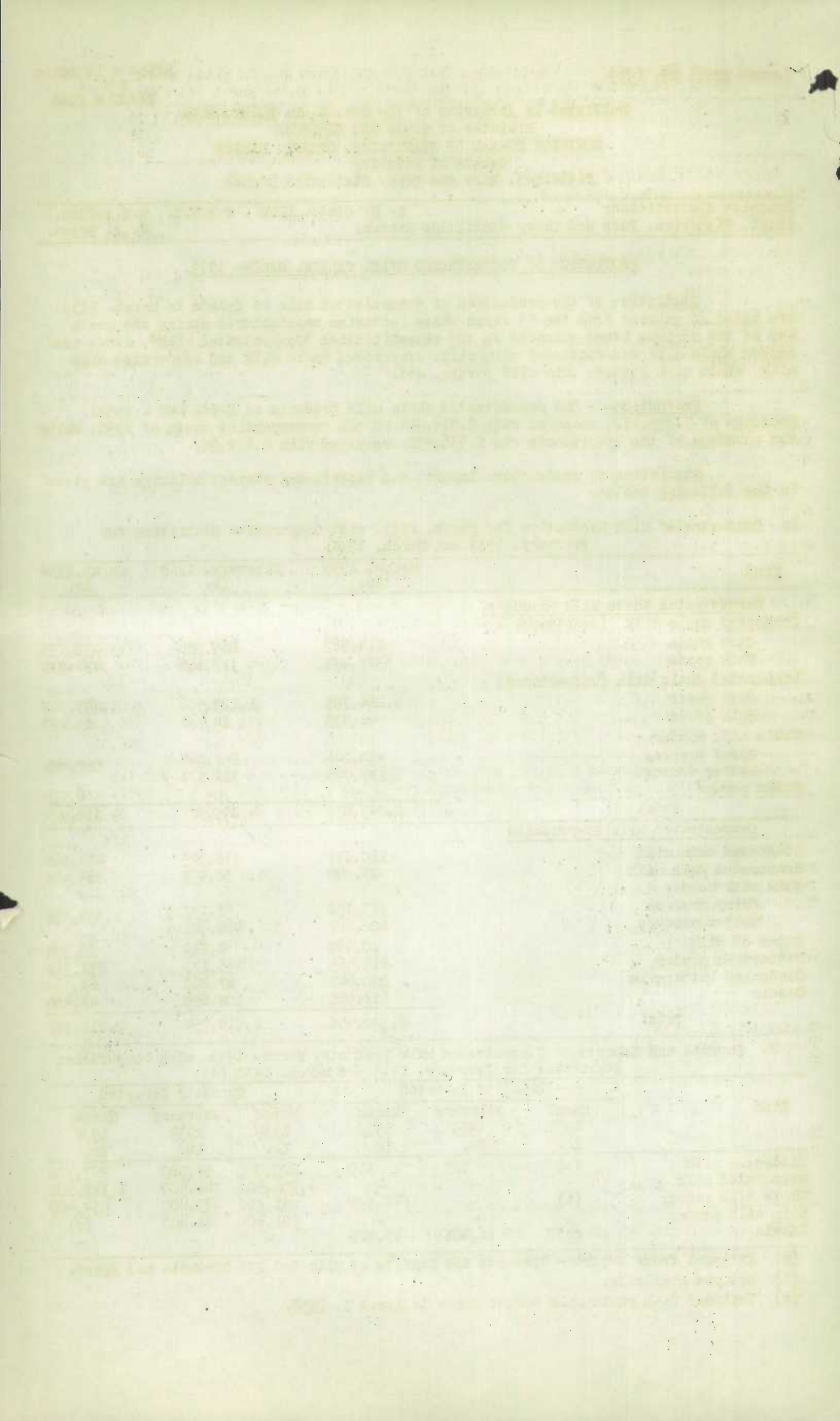
2. Imports and Exports of Concentrated Milk Products, March, 1939, with comparative Statistics for February, 1939 and March, 1938 (a)

Kind	Quantity Imported			Quantity Exported		
	March 1939 Lb.	February 1939 Lb.	March 1938 Lb.	March 1939 Lb.	February 1939 Lb.	March 1938 Lb.
Condensed milk	(b)	125	310	220,000	96,900	267,300
Evaporated milk	-	-	-	1,906,500	746,500	1,388,800
Whole milk powder	(b)	-	147,391	491,800	433,400	434,400
Skim milk powder	-	-	-	301,600	341,400	(c)
Casein	(b)	16,461	41,926	-	-	-

(a) External Trade Report - "Imports and Exports of Milk and Its Products and Eggs".

(b) Not yet available.

(c) Included with whole milk powder prior to April 1, 1938.



3. Cumulative Production of Concentrated Milk for the Three Months Ended March 31, 1939 with Comparative Statistics for the Three Months Ended March 31, 1938.

Kind	Three Months Ended March 31 -	
	1939 Lb.	1938 Lb.
<u>Concentrated Whole Milk Products</u>		
Condensed whole milk (sweetened) :		
Case goods	617,948	1,207,341
Bulk goods	1,040,399	942,841
Evaporated whole milk (unsweetened) :		
Case goods	13,509,325	19,321,732
Bulk goods	90,349	159,685
Whole milk powder :		
Spray process	797,821)	1,413,864
Roller process	324,997)	
Cream powder	-	6,914
Total	16,380,839	23,052,377
<u>Concentrated Milk By-Products</u>		
Condensed skim milk	477,717	1,049,528
Evaporated skim milk	88,740	128,648
Skim milk powder :		
Spray process	2,650,182)	3,399,091
Roller process	1,577,065)	
Sugar of milk	28,192	23,180
Buttermilk powder	746,637	756,755
Condensed buttermilk	462,638	184,340
Casein	316,049	121,807
Total	6,347,220	5,663,349

4. Production by Months of Condensed Milk, Evaporated Milk and Skim Milk Powder for the period January to March, 1939.

Months	Condensed Milk		Evaporated Milk		Skim Milk Powder	
	Case goods Lb.	Bulk goods Lb.	Case goods Lb.	Bulk goods Lb.	Spray process Lb.	Roller process Lb.
January	237,600	353,739	4,095,020	34,161	908,233	507,937
February	265,386	315,186	3,129,506	14,793	758,157	466,521
March	114,962	371,474	6,284,799	41,395	983,792	602,607

5. Stocks of Concentrated Milk in Cold Storages, Warehouses, and Dairy Factories April 1, 1939 with Comparative Statistics for March 1, 1939 and April 1, 1938. (a)

Kind	April 1, 1939	March 1, 1939	April 1, 1938.
	Lb. (b)	Lb. (b)	Lb. (b)
<u>Concentrated Whole Milk Products</u>			
Condensed whole milk	620,834	772,209	352,083
Evaporated whole milk	5,111,464	8,059,973	7,817,148
Whole milk powder :			
Spray process	712,652	847,372)	426,085
Roller process	43,139	134,863)	
Cream powder	5,560	6,680	6,086
Total	6,493,649	9,821,097	8,601,402
<u>Concentrated Milk By-Products</u>			
Condensed skim milk	411,300	480,095	102,258
Evaporated skim milk	3,271	8,187	1,760
Skim milk powder :			
Spray process	2,006,838	3,183,507)	1,035,580
Roller process in bags	816,053	1,285,993)	
" " " bbl.	895,165	1,055,722)	
Buttermilk powder	1,128,402	1,433,743	337,025
Casein	137,432	304,312	95,482
Total	5,398,511	7,751,559	1,572,105

(a) Agricultural Branch - "Stocks of Dairy and Poultry Products".

(b) Owned and held by and/or for manufacturers.



1010739812

1970-1971

1972-1973

1974-1975

1976-1977

1978-1979

1980-1981

1982-1983

1984-1985

1986-1987

1988-1989

1990-1991

1992-1993

1994-1995

1996-1997

1998-1999

2000-2001

2002-2003

2004-2005

2006-2007

2008-2009

2010-2011

1970-1971

1972-1973

1974-1975

1976-1977

1978-1979

1980-1981

1982-1983

1984-1985

1986-1987

1988-1989

1990-1991

1992-1993

1994-1995

1996-1997

1998-1999

2000-2001

2002-2003

2004-2005

2006-2007

2008-2009

2010-2011