

3-D-03

Issued July 22nd, 1941.

Price 10 cents  
or  
\$1.00 a year

DOMINION BUREAU OF STATISTICS  
PROPERTY OF THE LIBRARY

Published by Authority of the Hon. James A. MacKinnon, M.P.,  
Minister of Trade and Commerce

DOMINION BUREAU OF STATISTICS, OTTAWA, CANADA  
Census of Industry  
Fisheries and Animal Products Branch

Dominion Statistician: R. H. Coats, LL.D., R.R.S.C., F.S.S. (Hon.)  
Chief, Fisheries and Animal Products Branch: F. A. Brown

PRODUCTION OF CONCENTRATED MILK, CANADA, JUNE, 1941.

Statistics of the production of concentrated milk in Canada in June, 1941, are based on returns from the 58 firms whose factories manufactured during the month any of the various items embraced in the classification of "concentrated milk", i.e., condensed whole milk and condensed skim milk, evaporated whole milk and evaporated skim milk, whole milk powder and skim milk powder, etc.

Production. - The output of concentrated milk continues to advance and during the month of June shows a total for all items of 30,343,608 pounds, an increase over the preceding month of 2,178,744 pounds, or 8 per cent, and an increase over June, 1940 of 4,297,142 pounds, or 16 per cent. Evaporated whole milk is the principal item with a production of 21,852,189 pounds, or 72 per cent of the total for all items.

Cumulative Production. - The combined output of all items in the six months ended June 30, was 121,134,728 pounds, compared with 95,758,414 pounds in the corresponding period of 1940.

Foreign Trade. - The exports of concentrated milk totalled 3,653,500 pounds, compared with 5,689,000 pounds in the preceding month and 2,581,100 pounds in June, 1940. The import figures for June of this year are not yet available.

Stocks. - The total for all items of concentrated milk held in storage at date of July 1 was 22,520,375 pounds, compared with 14,685,977 pounds at the beginning of the preceding month and 25,969,703 pounds at date of July 1, 1940.

1. Concentrated Milk Production for June 1941, with Comparative Statistics for May, 1941 and June, 1940.

Kind	June, 1941 Lb.	May, 1941 Lb.	June 1940 Lb.
<u>Concentrated Whole Milk Products</u>			
Condensed whole milk (sweetened):			
Case goods .....	1,766,000	1,837,130	715,277
Bulk goods .....	567,827	459,454	607,683
Evaporated whole milk (unsweetened):			
Case goods .....	21,445,486	19,865,245	18,583,762
Bulk goods .....	406,703	96,537	81,034
Whole milk powder:			
Spray process .....	657,383	713,570	729,402
Roller process .....	241,943	244,558	156,904
<b>TOTAL .....</b>	<b>25,085,342</b>	<b>23,216,494</b>	<b>20,874,062</b>
<u>Concentrated Milk By-Products</u>			
Condensed skim milk .....	467,753	492,937	405,247
Evaporated skim milk .....	64,090	166,690	108,812
Skim milk powder:			
Spray process .....	1,951,497	1,804,133	2,234,693
Roller process .....	1,801,776	1,526,424	1,353,325
Sugar of milk .....	28,000	28,320	46,240
Buttermilk powder .....	651,937	592,636	578,432
Condensed buttermilk .....	100,380	142,402	187,085
Casein .....	192,833	194,828	258,570
<b>TOTAL .....</b>	<b>5,258,266</b>	<b>4,948,370</b>	<b>5,172,404</b>



2. Quantitative Production of Concentrated Milk for the Six Months Ended June 30, 1941, with Comparative Statistics for the Six Months Ended June 30, 1940.

Kind	Six Months Ended June 30	
	1941 Lb.	1940 Lb.
<u>Concentrated Whole Milk Products</u>		
Condensed whole milk (sweetened):		
Case goods .....	6,547,438	2,702,112
Bulk goods .....	2,784,094	2,276,807
Evaporated whole milk (unsweetened):		
Case goods .....	85,829,492	67,131,418
Bulk goods .....	822,168	340,214
Whole milk powder:		
Spray process .....	2,885,251	2,912,210
Roller process .....	1,325,794	759,386
Cream powder .....	6,709	7,120
<b>TOTAL .....</b>	<b>100,200,946</b>	<b>76,129,267</b>
<u>Concentrated Milk By-Products</u>		
Condensed skim milk .....	2,357,457	2,047,401
Evaporated skim milk .....	692,019	385,207
Skim milk powder:		
Spray process .....	7,738,441	8,423,621
Roller process .....	6,324,912	4,938,629
Sugar of milk .....	112,233	125,191
Buttermilk powder .....	2,272,991	2,106,331
Condensed buttermilk .....	751,719	863,710
Casein .....	684,010	739,057
<b>TOTAL .....</b>	<b>20,933,782</b>	<b>19,629,147</b>

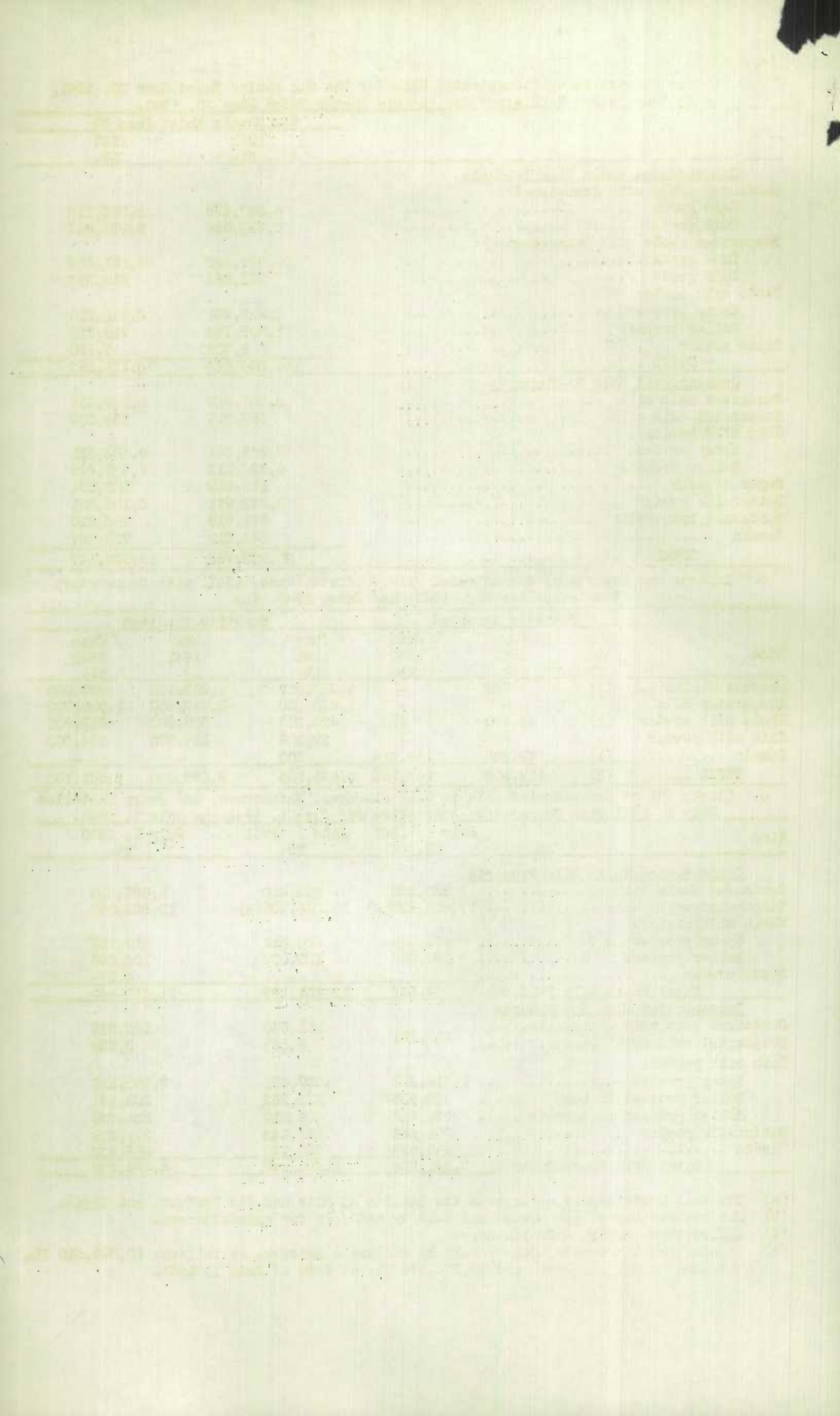
3. Imports and Exports of Concentrated Milk Products, June, 1941, with Comparative Statistics for May, 1941, and June, 1940. (a)

Kind	Quantity Imported			Quantity Exported		
	June 1941	May 1941	June 1940	June 1941	May 1941	June 1940
	Lb.	Lb.	Lb.	Lb.	Lb.	Lb.
Condensed milk ..	(b)	325	-	1,362,000	1,209,100	455,300
Evaporated milk .	-	-	-	1,848,900	3,713,600	1,058,700
Whole milk powder	(b)	45,670	689	420,200	598,500	912,900
Skim milk powder.	-	-	-	22,100	167,800	154,200
Casein .....	(b)	73,308	166,516	300	-	-
<b>TOTAL .....</b>	<b>(b)</b>	<b>119,303</b>	<b>167,205</b>	<b>3,653,500</b>	<b>5,689,000</b>	<b>2,581,100</b>

4. Stocks (c) of Concentrated Milk in Cold Storages, Warehouses, and Dairy Factories July 1, 1941 with Comparative Statistics for June 1, 1941 and July 1, 1940.

Kind	July 1, 1941 Lb. (d)	June 1, 1941 Lb.	July 1, 1940 Lb.
<u>Concentrated Whole Milk Products</u>			
Condensed whole milk .....	936,222	792,410	1,055,924
Evaporated whole milk .....	17,404,633(a)	10,548,401(e)	19,536,067
Whole milk powder:			
Spray process .....	773,284	580,311	810,197
Roller process .....	154,982	180,077	104,683
Cream powder .....	-	-	4,574
<b>Total Whole Milk Products .....</b>	<b>18,269,121</b>	<b>12,101,199</b>	<b>21,511,445</b>
<u>Concentrated Milk By-Products</u>			
Condensed skim milk .....	(	161,640	282,847
Evaporated skim milk .....	191,871	6,561	3,822
Skim milk powder:			
Spray process .....	1,314,357	1,027,421	2,265,119
Roller process in bags .....	362,536	232,282	393,181
Roller process in barrels .....	774,828	689,012	854,738
Buttermilk powder .....	306,686	187,142	271,919
Casein .....	300,976	280,720	386,632
<b>Total Milk By-Products ...</b>	<b>3,251,254</b>	<b>2,584,778</b>	<b>4,458,258</b>

- (a) External Trade Report - "Imports and Exports of Milk and Its Products and Eggs".
- (b) Not yet available. (c) Owned and held by and / or for manufacturers.
- (d) Agricultural Branch - Preliminary.
- (e) In addition there were amounts held by wholesale grocers, as follows: 10,590,510 lb. at date of July 1, 1941, and 10,324,572 lb. at date of June 1, 1941.



23-D-03

Issued July 22, 1941.

Published by Authority of the Hon. James A. MacKinnon, M.P.,  
 Minister of Trade and Commerce  
 DOMINION BUREAU OF STATISTICS, OTTAWA, CANADA  
 Fisheries and Animal Products Branch



Dominion Statistician: R. H. Coats, LL.D., F.R.S.C., F.S.S. (Hon.)  
 Chief, Fisheries and Animal Products Branch: F. A. Brown

REPORT ON THE FACTORY SALES OF MILK POWDERS, CANADA, JUNE, 1941

The statistics of the present report are based on returns from the 45 manufacturers whose plants sold during the month any of the various kinds of milk powder or casein.

1. Sales of Milk Powder, June, 1941.

Kind	Quantity sold	Total value	Average price per lb.
	lb.	\$	cents
Whole milk powder (bulk goods) spray process .....	83,557	24,935	29.84
Whole milk powder (bulk goods) roller process .....	88,531	16,409	18.53
Buttermilk powder - roller process .....	517,032	36,818	7.12
Skimmilk powder (bulk goods) spray process .....	1,412,196	145,667	10.31
Skimmilk powder (bulk goods) - roller process for human consumption .....	987,249	75,192	7.62
Skimmilk powder - roller process for animal consumption .....	554,738	40,641	7.33
Casein (commercial acid) .....	181,916	25,153	13.83
Total value .....	-	364,815	-

2. Cumulative Sales of Milk Powder, February to June, 1941, inclusive.

Kind	February 1 to June 30.		
	Quantity sold	Total Value	Average price per lb.
	lb.	\$	cents
Whole milk powder (bulk goods) spray process .....	393,911	112,845	28.65
Whole milk powder (bulk goods) roller process .....	631,530	122,560	19.41
Buttermilk powder - roller process .....	1,909,071	135,922	7.12
Skimmilk powder (bulk goods) spray process .....	6,612,268	673,508	10.19
Skimmilk powder (bulk goods) - roller process for human consumption .....	3,762,540	294,496	7.83
Skimmilk powder - roller process for animal consumption .....	2,209,932	163,100	7.38
Casein (commercial acid) .....	823,221	107,080	13.01
Total value .....	-	1,609,511	-



1010739840

Year	Value	Value	Value
1960	100.0	100.0	100.0
1961	101.2	101.2	101.2
1962	102.5	102.5	102.5
1963	103.8	103.8	103.8
1964	105.1	105.1	105.1
1965	106.4	106.4	106.4
1966	107.7	107.7	107.7
1967	109.0	109.0	109.0
1968	110.3	110.3	110.3
1969	111.6	111.6	111.6
1970	112.9	112.9	112.9
1971	114.2	114.2	114.2
1972	115.5	115.5	115.5
1973	116.8	116.8	116.8
1974	118.1	118.1	118.1
1975	119.4	119.4	119.4
1976	120.7	120.7	120.7
1977	122.0	122.0	122.0
1978	123.3	123.3	123.3
1979	124.6	124.6	124.6
1980	125.9	125.9	125.9
1981	127.2	127.2	127.2
1982	128.5	128.5	128.5
1983	129.8	129.8	129.8
1984	131.1	131.1	131.1
1985	132.4	132.4	132.4
1986	133.7	133.7	133.7
1987	135.0	135.0	135.0
1988	136.3	136.3	136.3
1989	137.6	137.6	137.6
1990	138.9	138.9	138.9
1991	140.2	140.2	140.2
1992	141.5	141.5	141.5
1993	142.8	142.8	142.8
1994	144.1	144.1	144.1
1995	145.4	145.4	145.4
1996	146.7	146.7	146.7
1997	148.0	148.0	148.0
1998	149.3	149.3	149.3
1999	150.6	150.6	150.6
2000	151.9	151.9	151.9
2001	153.2	153.2	153.2
2002	154.5	154.5	154.5
2003	155.8	155.8	155.8
2004	157.1	157.1	157.1
2005	158.4	158.4	158.4
2006	159.7	159.7	159.7
2007	161.0	161.0	161.0
2008	162.3	162.3	162.3
2009	163.6	163.6	163.6
2010	164.9	164.9	164.9
2011	166.2	166.2	166.2
2012	167.5	167.5	167.5
2013	168.8	168.8	168.8
2014	170.1	170.1	170.1
2015	171.4	171.4	171.4
2016	172.7	172.7	172.7
2017	174.0	174.0	174.0
2018	175.3	175.3	175.3
2019	176.6	176.6	176.6
2020	177.9	177.9	177.9
2021	179.2	179.2	179.2
2022	180.5	180.5	180.5
2023	181.8	181.8	181.8
2024	183.1	183.1	183.1
2025	184.4	184.4	184.4
2026	185.7	185.7	185.7
2027	187.0	187.0	187.0
2028	188.3	188.3	188.3
2029	189.6	189.6	189.6
2030	190.9	190.9	190.9