



DAIRY FACTORY PRODUCTION

MARCH, 1959

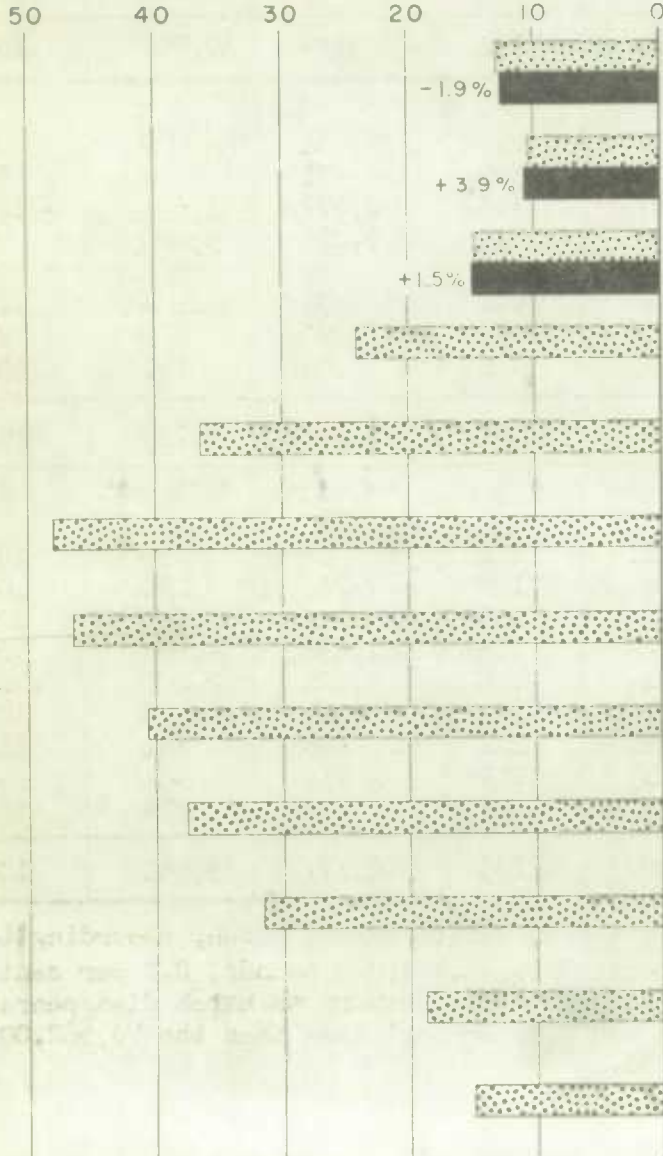
Series No. XXVIII, Report No. 3

Price: \$1.00 per year



CREAMERY BUTTER

MILLION POUNDS



CHEDDAR CHEESE

MILLION POUNDS

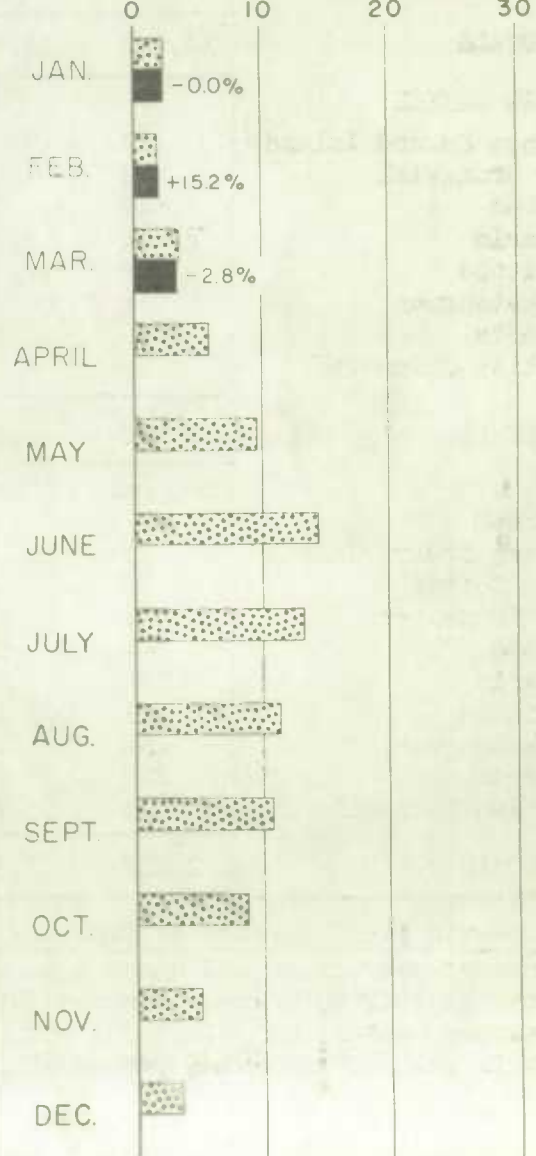


TABLE 1. - Creamery Butter, Cheddar Cheese and Ice Cream Production, in Canada, by Provinces, March, January to March, 1958 and 1959

Product and Province	March			January - March		
	1959	1958	% of 1958	1959	1958	% of 1958
CREAMERY BUTTER	'000 lb.	'000 lb.	%	'000 lb.	'000 lb.	%
Prince Edward Island	187	160	117	597	554	108
Nova Scotia	248	248	100	772	768	101
New Brunswick	239	252	95	758	726	104
Quebec	2,738	3,195	86	6,165	7,673	80
Ontario	5,535	5,218	106	14,801	13,564	109
Manitoba	1,779	1,640	108	4,417	4,128	107
Saskatchewan	1,782	1,737	103	4,533	4,429	102
Alberta	2,112	2,044	103	5,509	5,362	103
British Columbia	252	156	162	607	584	104
TOTALS	14,872	14,650	102	38,159	37,788	101
CHEDDAR CHEESE						
Prince Edward Island	17	2	...	64	9	...
New Brunswick	30	29	103	71	72	99
Quebec	847	749	113	2,177	1,694	129
Ontario	2,244	2,396	94	5,015	5,263	95
Manitoba	23	82	28	50	166	30
Saskatchewan	11	-	...	30	-	...
Alberta	113	129	88	280	322	87
British Columbia	75	71	106	205	193	106
TOTALS	3,360	3,458	97	7,892	7,719	102
ICE CREAM	'000 gal.	'000 gal.	%	'000 gal.	'000 gal.	%
Prince Edward Island	13	11	118	31	30	103
Nova Scotia	96	89	108	242	235	103
New Brunswick	52	52	100	141	129	109
Quebec	530	508	104	1,436	1,395	103
Ontario	896	894	100	2,220	2,206	101
Manitoba	121	119	102	323	296	109
Saskatchewan	180	148	122	426	381	112
Alberta	262	221	119	614	561	109
British Columbia	298	288	103	738	719	103
TOTALS	2,448	2,330	105	6,171	5,952	104

The Domestic Disappearance of Creamery Butter in Canada during March, according to preliminary production and stock data amounted to 24,125,000 pounds, 0.3 per cent less than the 24,194,000 pounds in March 1958. Cumulative January to March disappearance of creamery butter, at 70,202,000 pounds was 0.5 per cent less than the 70,562,000 pounds in the corresponding period of 1958.

TABLE 2. - Concentrated Milk Products: Production in Canada, March and January to March, 1958 and 1959

Products	March			January - March		
	1959	1958	% of 1958	1959	1958	% of 1958
	'000 lb.	'000 lb.	%	'000 lb.	'000 lb.	%
WHOLE MILK PRODUCTS						
Condensed Milk	1,289	1,870	69	3,416	3,947	87
Case	350	457	77	917	896	102
Bulk	939	1,413	66	2,499	3,051	82
Evaporated Milk	20,242	20,886	97	49,408	48,393	102
Case	19,627	20,351	96	47,745	46,889	102
Bulk	615	535	115	1,663	1,504	111
Whole Milk Powder	1,506	1,181	128	3,910	2,798	140
Spray	1,470	1,143	129	3,780	2,633	144
Roller	36	38	95	130	165	79
Partly Skim. Evap. Milk	1,649	1,352	122	4,344	3,760	116
Other Whole Milk Products <u>1/</u>	197	236	83	389	554	70
MILK BY-PRODUCTS						
Condensed Skim Milk	340	257	132	905	698	130
Evap. Skim Milk	599	619	97	1,892	1,759	108
Skim Milk Powder	8,660	7,811	111	22,156	19,649	113
Spray	6,381	5,531	115	16,035	13,704	117
Roller	2,279	2,280	100	6,121	5,945	103
Powdered Buttermilk	431	448	96	1,131	1,141	99
Whey Powder	194	304	64	584	561	104
Casein	43	79	54	139	215	65
Other Milk By-Products <u>2/</u>	-	7	...	93	99	94

1/ Includes malted milk, cream powder, sub-standard whole milk powder and sterilized cream.

2/ Includes sugar of milk (lactose) and condensed buttermilk.



1010633432

- 4 -

TABLE 3. - Whey Butter: Production, by Province, March, January to March, 1958 and 1959

Month and Year		P.E.I.	Quebec	Ontario	Alberta	Total
pounds						
March	1958	-	7,000	59,000	400	66,400
	1959	-	7,000	59,400	-	66,400
Jan. to Mar.	1958	-	16,000	160,000	1,100	177,100
	1959	-	17,000	141,000	-	158,000

TABLE 4. - Whole Milk Equivalent of Dairy Factory Products, Canada, March 1958 and 1959

Year	Creamery Butter	Cheddar Cheese	Concentrated Products	Ice Cream	Total
thousand pounds					
1958	342,810	38,038	64,717	39,610	485,175
1959	348,005	36,960	64,337	41,616	490,918

TABLE 5. - Average Wholesale Prices, F.O.B. Montreal, of Certain Dairy Products, January to March, 1958 and 1959

Product	1958			1959		
	Jan.	Feb.	Mar.	Jan.	Feb.	Mar.
cents per pound						
Creamery Butter (Solids) <u>1/</u>	62½	62½	62¾	64	64	64
Cheddar Cheese(Ont. Coloured)	35½	35¼	35½	36	36	36
Evaporated Whole Milk(cases) <u>2/</u>	\$6.20	\$6.20	\$6.20	\$6.22	\$6.25	\$6.35
Whole Milk Powder (Bags)						
(Spray - 26 per cent)	41	41	41	40	40	40
(Roller- 26 per cent)	35	35	35	34	34	34
Skim Milk Powder (Bags)						
(Spray) <u>2/</u>	17¼	17¼	17¼	15	15	15
(Roller) <u>2/</u>	14	14	14	12	12	12
Feed (Skm. & Bm.Pdr.)-Bags	8½	8½	8½	8½	9	9
Whey Powder	6¼	6¼	6¼	6½	6½	6½
Acid Casein	25½	25	25	24	24	24

1/ Current receipts of first grade solids.

2/ Car lot shipments.

Source: Canada Dept. of Agr. and dealer quotations averaged by Prices Section, D.B.S.

Prepared in the Livestock & Animal Products Section, Agriculture Division.
 Issued Tuesday, April 14, 1959