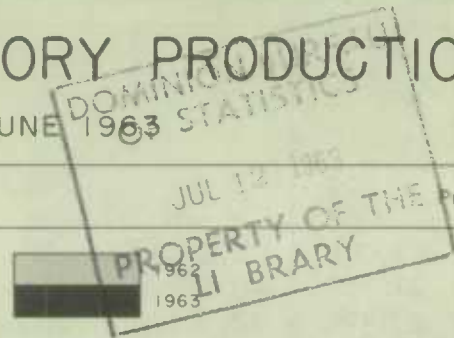


DAIRY FACTORY PRODUCTION

JUNE 1963

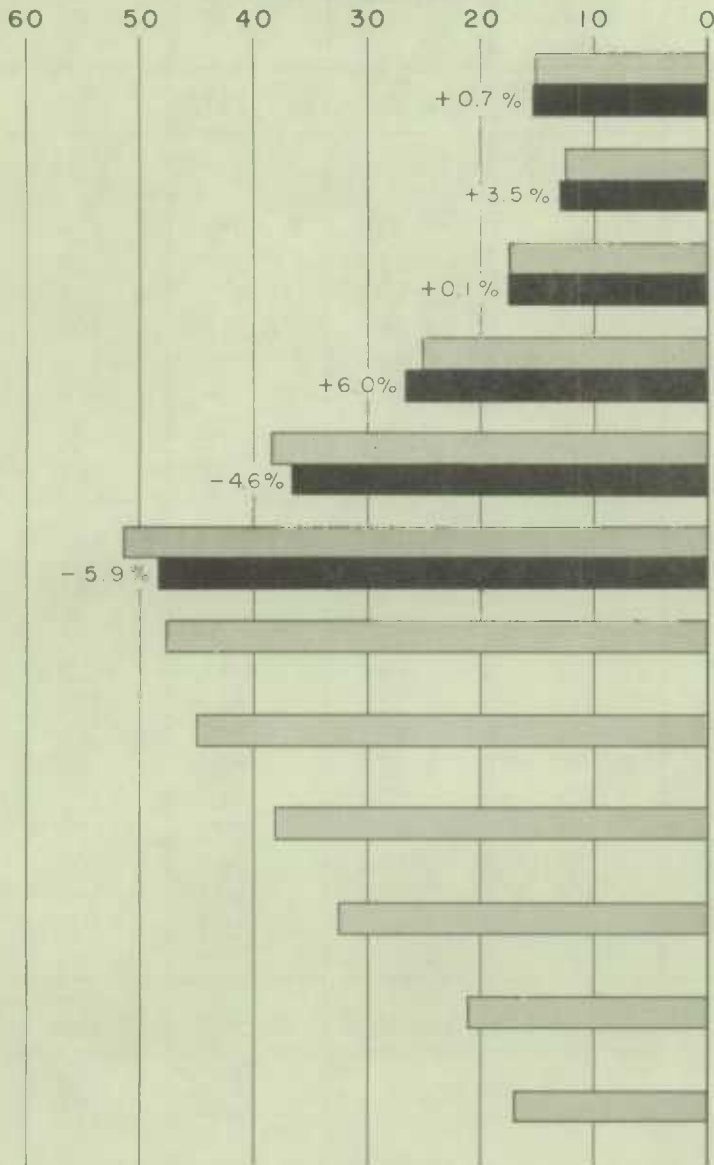
Vol. 32, No. 6

Price \$1.00 per year



CREAMERY BUTTER

MILLION POUNDS



CHEDDAR CHEESE

MILLION POUNDS

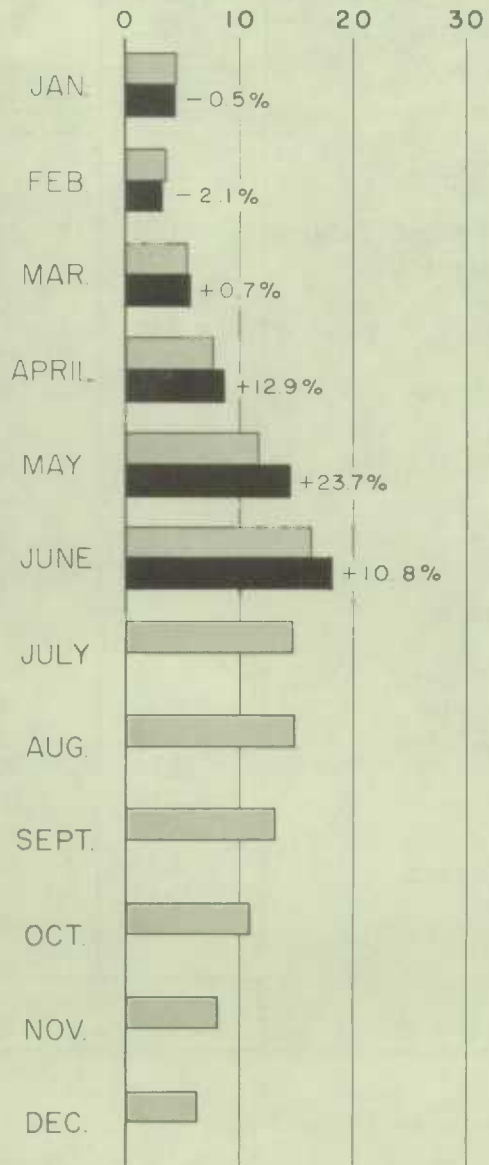


TABLE 1. - Creamery Butter, Cheddar Cheese and Ice Cream Mix Production in Canada, by Province, June and Cumulative January to June, 1962 and 1963

| Product and Province   | June          |               |            | January - June |                |            |
|------------------------|---------------|---------------|------------|----------------|----------------|------------|
|                        | 1963          | 1962          | % of 1962  | 1963           | 1962           | % of 1962  |
| <b>CREAMERY BUTTER</b> | '000 lb.      | '000 lb.      | %          | '000 lb.       | '000 lb.       | %          |
| Prince Edward Island   | 729           | 803           | 91         | 1,897          | 2,244          | 85         |
| Nova Scotia            | 462           | 548           | 84         | 1,453          | 1,814          | 80         |
| New Brunswick          | 1,074         | 1,104         | 97         | 2,564          | 2,896          | 89         |
| Quebec                 | 21,550        | 23,120        | 93         | 53,304         | 54,522         | 98         |
| Ontario                | 12,396        | 12,404        | 100        | 51,656         | 49,609         | 104        |
| Manitoba               | 3,293         | 3,613         | 91         | 12,585         | 12,757         | 99         |
| Saskatchewan           | 3,645         | 3,966         | 92         | 13,337         | 13,452         | 99         |
| Alberta                | 4,667         | 4,977         | 94         | 18,021         | 19,601         | 92         |
| British Columbia       | 411           | 739           | 56         | 2,574          | 3,236          | 80         |
| <b>Totals</b>          | <b>48,227</b> | <b>51,274</b> | <b>94</b>  | <b>157,391</b> | <b>160,131</b> | <b>98</b>  |
| <b>CHEDDAR CHEESE</b>  |               |               |            |                |                |            |
| Prince Edward Island   | 158           | 136           | 116        | 301            | 239            | 126        |
| New Brunswick          | 94            | 85            | 111        | 210            | 237            | 89         |
| Quebec                 | 6,555         | 5,639         | 116        | 22,120         | 18,321         | 121        |
| Ontario                | 10,843        | 10,025        | 108        | 29,857         | 28,115         | 106        |
| Manitoba               | 122           | 100           | 122        | 403            | 355            | 114        |
| Saskatchewan           | -             | -             | -          | -              | -              | -          |
| Alberta                | 209           | 211           | 99         | 760            | 834            | 91         |
| British Columbia       | 93            | 117           | 79         | 546            | 647            | 84         |
| <b>Totals</b>          | <b>18,074</b> | <b>16,313</b> | <b>111</b> | <b>54,197</b>  | <b>48,748</b>  | <b>111</b> |
| <b>ICE CREAM MIX</b>   | '000 gal.     | '000 gal.     | %          | '000 gal.      | '000 gal.      | %          |
| Prince Edward Island   | 16            | 17            | 94         | 68             | 58             | 117        |
| Nova Scotia            | 113           | 105           | 108        | 446            | 421            | 106        |
| New Brunswick          | 74            | 70            | 106        | 283            | 259            | 109        |
| Quebec                 | 710           | 722           | 98         | 2,511          | 2,564          | 98         |
| Ontario                | 1,039         | 1,001         | 104        | 4,048          | 3,940          | 103        |
| Manitoba               | 154           | 153           | 101        | 611            | 571            | 107        |
| Saskatchewan           | 139           | 146           | 95         | 596            | 553            | 108        |
| Alberta                | 253           | 243           | 104        | 1,051          | 1,009          | 104        |
| British Columbia       | 293           | 286           | 102        | 1,226          | 1,153          | 106        |
| <b>Totals</b>          | <b>2,791</b>  | <b>2,743</b>  | <b>102</b> | <b>10,840</b>  | <b>10,528</b>  | <b>103</b> |

TABLE 2. - Concentrated Milk Products: Production in Canada, June and Cumulative January to June, 1962 and 1963

| Product                             | June     |          |           | January - June |          |           |
|-------------------------------------|----------|----------|-----------|----------------|----------|-----------|
|                                     | 1963     | 1962     | % of 1962 | 1963           | 1962     | % of 1962 |
|                                     | '000 lb. | '000 lb. | %         | '000 lb.       | '000 lb. | %         |
| <b>WHOLE MILK PRODUCTS</b>          |          |          |           |                |          |           |
| Condensed Milk                      | 1,390    | 1,309    | 106       | 8,843          | 8,086    | 109       |
| Case                                | 58       | 51       | 114       | 1,200          | 1,353    | 89        |
| Bulk                                | 1,332    | 1,258    | 106       | 7,643          | 6,733    | 114       |
| Evaporated Milk                     | 40,177   | 40,781   | 99        | 151,974        | 145,628  | 104       |
| Case                                | 39,567   | 40,348   | 98        | 148,605        | 143,221  | 104       |
| Bulk                                | 610      | 433      | 141       | 3,369          | 2,407    | 140       |
| Whole Milk Powder                   | 2,419    | 2,474    | 98        | 12,118         | 12,219   | 99        |
| Spray                               | 2,409    | 2,459    | 98        | 11,994         | 12,055   | 99        |
| Roller                              | 10       | 15       | 67        | 124            | 164      | 76        |
| Partly Skim. Evap. Milk             | 3,149    | 2,419    | 130       | 12,779         | 10,123   | 126       |
| Other Whole Milk Products <u>1/</u> | 1,084    | 974      | 111       | 6,869          | 6,262    | 110       |
| <b>MILK BY-PRODUCTS</b>             |          |          |           |                |          |           |
| Condensed Skim Milk                 | 135      | 177      | 76        | 714            | 926      | 77        |
| Evap. Skim Milk                     | 977      | 912      | 107       | 3,187          | 2,312    | 138       |
| Skim Milk Powder                    | 25,398   | 27,243   | 93        | 84,546         | 88,753   | 95        |
| Spray                               | 20,006   | 21,358   | 94        | 68,484         | 71,456   | 96        |
| Roller                              | 5,392    | 5,885    | 92        | 16,062         | 17,297   | 93        |
| Powdered Buttermilk                 | 1,353    | 1,335    | 101       | 4,991          | 4,908    | 102       |
| Whey Powder                         | 3,146    | 2,383    | 132       | 10,859         | 6,302    | 172       |
| Casein                              | 3,631    | 3,325    | 109       | 9,196          | 8,450    | 109       |
| Other Milk By-Products <u>2/</u>    | 996      | 731      | 136       | 4,676          | 3,260    | 143       |

1/ Includes malted milk, cream powder, formula milks, whole milk powder of less than 26% fat, evaporated milk of 2% fat and concentrated liquid milk.

2/ Includes sugar of milk (lactose), condensed buttermilk, special formula skim milk products and concentrated liquid skim milk.

Production of evaporated whole milk and skim milk powder in Quebec and Ontario during June with the corresponding figure for the last June in brackets was as follows: Evaporated whole milk - Quebec, 11,245,000 lb. (14,715,000 lb.); Ontario, 14,656,000 lb. (15,067,000 lb.); skim milk powder - Quebec, 11,594,000 lb. (12,570,000 lb.); Ontario, 12,289,000 lb. (12,960,000 lb.).





TABLE 3. - Whey Butter: Production, by Province, June and Cumulative January to June, 1962 and 1963

| Month and Year  |      | P.E.I. | Quebec  | Ontario   | Alberta | Total     |
|-----------------|------|--------|---------|-----------|---------|-----------|
| pounds          |      |        |         |           |         |           |
| June            | 1962 | 4,000  | 144,000 | 341,000   | 400     | 489,400   |
|                 | 1963 | 700    | 160,000 | 311,600   | 500     | 472,800   |
| January to June | 1962 | 5,000  | 482,000 | 1,108,000 | 3,100   | 1,598,100 |
|                 | 1963 | 5,100  | 646,000 | 1,013,700 | 2,200   | 1,667,000 |

TABLE 4. - Whole Milk Equivalent of Dairy Factory Products, Canada, June, 1962 and 1963

| Year            | Creamery Butter | Cheddar Cheese | Concentrated Products | Ice Cream Mix <sup>1/</sup> | Total     |
|-----------------|-----------------|----------------|-----------------------|-----------------------------|-----------|
| thousand pounds |                 |                |                       |                             |           |
| 1962            | 1,199,812       | 179,443        | 121,869               | 93,262                      | 1,594,386 |
| 1963            | 1,128,512       | 198,814        | 121,422               | 94,894                      | 1,543,642 |

<sup>1/</sup> Not corrected for milk equivalent of butter used in mix production.

TABLE 5. - Average Wholesale Prices, F.O.B. Montreal, of Certain Dairy Products, April to June, 1962 and 1963

(Source: Canada Department of Agriculture and dealers quotations averaged by Prices Section, D.B.S.)

| Product                                      | 1962   |        |        | 1963   |        |        |
|--|--------|--------|--------|--------|--------|--------|
|  | Apr.   | May    | June   | Apr.   | May    | June   |
| cents per pound                              |        |        |        |        |        |        |
| Creamery Butter (Solids) <sup>1/</sup>       | 62 1/2 | 50 1/2 | 50 1/2 | 51     | 50 1/4 | 50 1/4 |
| Cheddar Cheese (Ont. Coloured) <sup>2/</sup> | 32 1/2 | 32 3/4 | 33 3/4 | 35 3/4 | 35 1/2 | 36 1/4 |
| Evaporated Whole Milk (Cases) <sup>3/</sup>  | \$6.40 | \$6.40 | \$6.40 | \$6.40 | \$6.40 | \$6.70 |
| Whole Milk Powder                            |        |        |        |        |        |        |
| (Spray - 26 per cent)                        | 37     | 37     | 37     | 37     | 37     | 37     |
| (Roller - 26 per cent)                       | 32     | 32     | 32     | 32     | 32     | 32     |
| Skim Milk Powder (Bags) <sup>3/</sup>        |        |        |        |        |        |        |
| (Spray)                                      | 7 1/2  | 8 1/4  | 8 1/4  | 8 1/2  | 11 1/2 | 11 1/2 |
| (Roller)                                     | 6      | 6 3/4  | 6 3/4  | 8      | 10 1/2 | 10 1/2 |
| Feed (Skm. & Bm. Pdr.) Bags                  | 5 1/4  | 6      | 6      | 7 1/4  | 8 1/2  | 9      |
| Whey Powder                                  | 4      | 4      | 4      | 4 1/2  | 4 1/2  | 4 1/2  |
| Acid Casein                                  | 21     | 20     | 20     | 20     | 21     | 21     |

<sup>1/</sup> Current receipts of first grade solids.

<sup>2/</sup> At Belleville.

<sup>3/</sup> Car lot shipments.

Prepared in the Livestock & Animal Products Section, Agriculture Division.  
Issued Friday, July 12, 1963.