

Published by Authority of the HON. W.D. EULER, M.P.,
Minister of Trade and Commerce

DOMINION BUREAU OF STATISTICS - CANADA
AGRICULTURAL BRANCH

Dominion Statistician: R. H. Coats, LL.D., F.R.S.C., F.S.S. (Hon.)
Chief, Agricultural Branch: T. W. Grindley, Ph.D.

CANADIAN MILLING STATISTICS

October, 1935.

Ottawa, Canada, December 6, 1935.- The Dominion Bureau of Statistics publishes, herewith, preliminary statistics of grains ground and products for October, 1935, with comparisons for the previous year, inventory for the month and wheat flour exports.

The daily capacity reporting for October, 1935 amounted to 94,122 barrels.

SUMMARY

During the month of October, 1935, 8,261,087 bushels of wheat were ground in Canadian mills compared with 7,426,566 bushels for the corresponding month of the previous year. Oats, corn, barley and mixed grain were higher than for October, 1934, while buckwheat was slightly lower.

Grains ground for the month of October, 1935 are shown in bushels with comparative figures for the same month of the previous year in brackets: Wheat 8,261,087 (7,426,566); Oats 1,543,665 (1,260,471); Corn 218,229 (152,965); Barley 99,278 (75,673); Buckwheat 30,417 (42,114); and Mixed Grain 1,627,948 (1,330,138).

Mill stocks of wheat on October 31, 1935 amounted to 11,525,038 bushels, while for the same month in 1934 the amount was 11,157,102 bushels.

Flour production in October, 1935 amounted to 1,824,754 barrels compared with 1,654,189 barrels for the same month last year. Exports of flour in October, 1935 amounted to 501,442 barrels compared with 485,549 barrels in October, 1934.

MILL GRINDINGS

The following table shows the amount of wheat, oats, corn, barley, buckwheat and mixed grain milled for the month of October, 1935, by merchant and custom mills in Canada according to divisions, with comparative totals for the same month last year and stocks on hand at October 31, 1935 (in bushels):-

Grain	Quantities Ground				Stocks on hand, October 31, 1935		
	Merchant Mills	Custom Mills	Total October, 1935	Total October, 1934	Merchant Mills	Custom Mills	Total October 31, 1935
<u>EASTERN DIVISION</u>							
Wheat	3,346,734	171,969	3,518,703	3,211,382	5,246,261	105,822	5,352,083
Oats	634,821	164,956	799,777	571,642	390,256	131,686	521,942
Corn	97,699	117,411	215,110	150,892	263,549	16,191	279,740
Barley	23,597	29,595	53,192	43,007	37,596	20,545	58,141
Buckwheat	-	30,417	30,417	42,114	1,379	5,666	7,045
Mixed Grain	42,815	1,524,293	1,567,108	1,269,794	2,306	13,857	16,163
<u>WESTERN DIVISION</u>							
Wheat	4,584,160	158,224	4,742,384	4,215,184	6,046,366	126,589	6,172,955
Oats	711,624	32,264	743,888	688,829	1,075,711	13,002	1,088,713
Corn	3,093	26	3,119	2,073	10,586	250	10,836
Barley	29,120	16,966	46,086	32,666	52,535	2,672	55,207
Buckwheat	-	-	-	-	-	-	-
Mixed Grain	18	60,822	60,840	60,344	150	15	165
<u>DOMINION OF CANADA</u>							
Wheat	7,930,894	330,193	8,261,087	7,426,566	11,292,627	232,411	11,525,038
Oats	1,346,445	197,220	1,543,665	1,260,471	1,465,967	144,688	1,610,655
Corn	100,792	117,437	218,229	152,965	274,135	16,441	290,576
Barley	52,717	46,561	99,278	75,673	90,131	23,217	113,348
Buckwheat	-	30,417	30,417	42,114	1,379	5,666	7,045
Mixed Grain	42,833	1,585,115	1,627,948	1,330,138	2,456	13,872	16,328

MILLINGS

The following table shows the production from wheat and coarse grains ground in merchant and custom mills in Canada for the month of October, 1935, according to divisions, with comparative totals for the same month last year and stocks on hand at October 31, 1935:-

Products	Unit of Measure	Production from Grindings				Stocks on hand Oct. 31
		Eastern Division	Western Division	Total Oct., 1935	Total Oct., 1934	
<u>Wheat Flour</u>						
Manitoba Sp. P. No. 1	Barrels	299,920	327,655	627,575	519,290	308,968
Manitoba Sp. P. No. 2	"	226,341	306,651	532,992	514,892	141,434
Ontario Winter Straight	"	89,197	-	89,197	49,806	18,107
All Other	"	137,553	360,163	497,716	493,698	607,440
Total Flour	"	753,011	994,469	1,747,480	1,577,686	1,075,949
<u>Sundry Cereals</u>						
Low Grade or Feed Flour	Barrels	32,913	44,361	77,274	76,503	36,385
Bran	Tons	12,185	16,431	28,616	25,374	10,170
Shorts	"	11,100	18,762	29,862	25,632	10,836
Middlings	"	3,751	3,566	7,317	6,576	5,551
All Other Offal	"	5,332	5,117	10,449	8,580	2,833
Oatmeal	Pounds	1,044,876	655,844	1,700,720	1,065,990	663,484
Rolled Oats	"	8,898,480	10,590,001	19,488,481	16,697,250	7,016,556
Corn Flour and Meal	"	2,842,570	-	2,842,570	1,725,600	432,112
Barley, Pot and Pearl	"	204,607	184,485	389,092	282,420	119,098
Buckwheat Flour	"	561,549	-	561,549	694,011	885
<u>Ground Feed</u>						
Ground Oats	Pounds	6,277,074	2,208,034	8,485,108	7,642,898	1,481,503
Cracked Corn	"	6,170,637	174,664	6,345,301	4,269,639	497,268
Ground Barley	"	1,615,747	1,798,139	3,413,886	3,047,473	299,995
Mixed Grain	"	69,698,121	2,693,866	72,391,987	59,213,397	141,926

† Including Coarse Grain Offal.

Flour output for the month of October, 1935, amounting to 1,824,754 barrels, showed an improvement over the same month last year when 1,654,189 barrels were manufactured. Wheat offal increased accordingly with bran 28,616 (25,374) tons, shorts 29,862 (25,632) tons and middlings 7,317 (6,576) tons.

Cereal production for the month of October, 1935 was as follows with the figures for the same month last year in brackets and the quantities in pounds: Oatmeal, 1,700,720 (1,065,990); Rolled Oats, 19,488,481 (16,697,250); Corn Flour and Meal, 2,842,570 (1,725,600); Pot and Pearl Barley, 389,092 (282,420); and Buckwheat Flour, 561,549 (694,011).

Animal feed products compared as follows: Ground Oats, 8,485,108 (7,642,898) pounds; Cracked Corn, 6,345,301 (4,269,639) pounds; Ground Barley, 3,413,886 (3,047,473) pounds; and Mixed Grain, 72,391,987 (59,213,397) pounds.

Total flour stocks in October, 1935 amounted to 1,112,334 barrels compared with 1,039,622 barrels for the same month last year and 982,721 barrels for the previous month.

SUMMARY OF MILL GRINDINGS

The following table summarizes the mill grind of wheat, oats, corn, barley and mixed grain for the first three months of the crop year 1935-36, with comparative figures for 1934-35:-

Months	Wheat	Oats	Corn	Barley	Mixed Grain
(Bushels)					
August, 1935	5,230,795	733,282	229,976	59,523	913,719
September	6,932,568	1,151,068	218,914	68,880	1,134,815
October	8,261,087	1,543,665	218,229	99,278	1,627,948
T O T A L	20,424,450	3,428,015	667,119	227,681	3,676,482
TOTAL LAST YEAR	19,378,639	3,068,524	544,684	198,111	3,079,248

SUMMARY OF MILL PRODUCTION

The following table summarizes the production of wheat flour, oatmeal, rolled oats and corn flour and meal for the first three months of the crop year 1935-36, including percentage of operation and wheat flour exports, with comparative figures for 1934-35:-

Months	Wheat Flour		Oatmeal Pounds	Rolled Oats Pounds	Corn Flour and Meal Pounds	Wheat Flour Exports Barrels
	Percentage of operation	Quantity Barrels				
August, 1935	48.9	1,161,389	493,528	7,977,920	2,321,082	376,562
September	68.3	1,535,189	902,388	13,911,445	2,312,180	395,640
October	75.0	1,824,754	1,700,720	19,488,481	2,842,570	501,442
T O T A L		4,521,332	3,096,636	41,377,846	7,475,832	1,273,644
TOTAL LAST YEAR		4,319,608	2,200,337	40,863,900	5,835,938	1,266,958

The following table shows the manufacture of oatmeal in Canada for the calendar years 1929 to 1934:-

Months	1929	1930	1931	1932	1933	*1934
(Pounds)						
January	1,276,141	1,193,198	2,449,163	1,799,728	401,299	803,504
February	1,247,855	734,504	1,461,180	1,884,694	527,676	558,853
March	1,351,637	1,210,472	1,568,252	1,557,766	559,858	569,533
April	1,166,157	820,475	2,925,422	1,551,310	587,631	629,032
May	1,646,196	1,044,472	2,861,316	888,497	556,907	614,693
June	787,185	1,066,270	1,569,155	880,560	367,386	319,089
July	859,854	754,645	690,259	402,937	378,005	553,201
August	860,672	917,275	719,023	658,480	648,373	416,383
September	680,306	1,017,130	1,439,682	777,966	598,044	717,964
October	1,197,486	1,192,532	2,686,145	1,428,696	751,566	1,065,990
November	929,545	1,246,622	3,423,342	1,193,036	937,171	1,119,776
December	650,723	3,636,850	3,659,093	499,733	441,557	458,890
T O T A L	12,653,757	14,834,445	25,452,032	13,523,403	6,755,473	7,826,908

* Preliminary figures from August to December 1934.

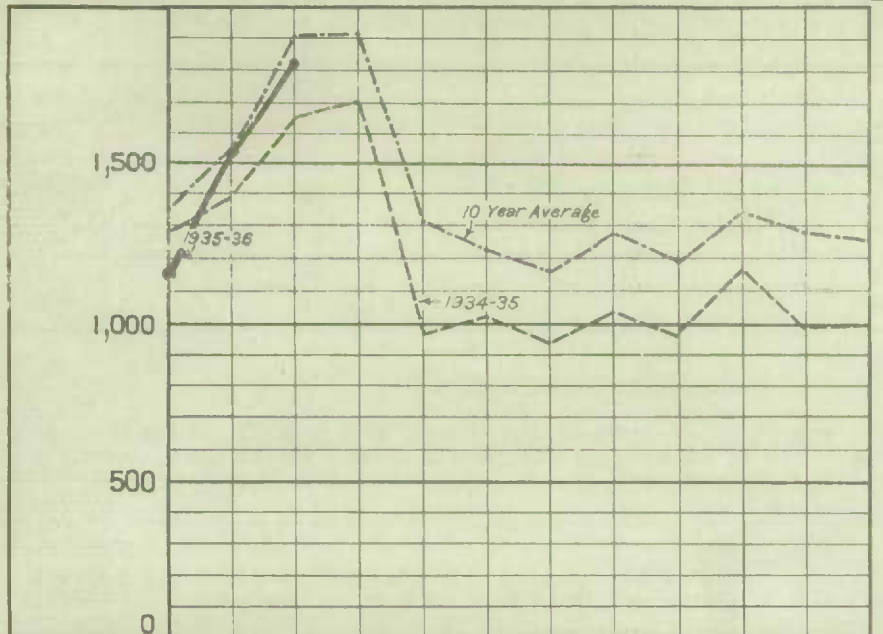


1010633818

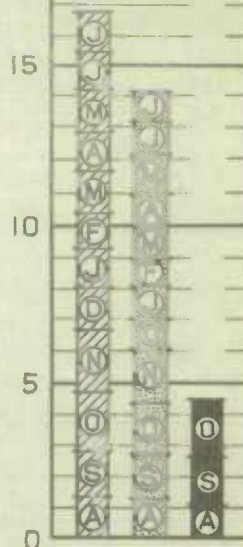
WHEAT FLOUR PRODUCTION

THOUSAND
BARRELS

MILLION
BARRELS



CUMULATIVE
COMPARISON

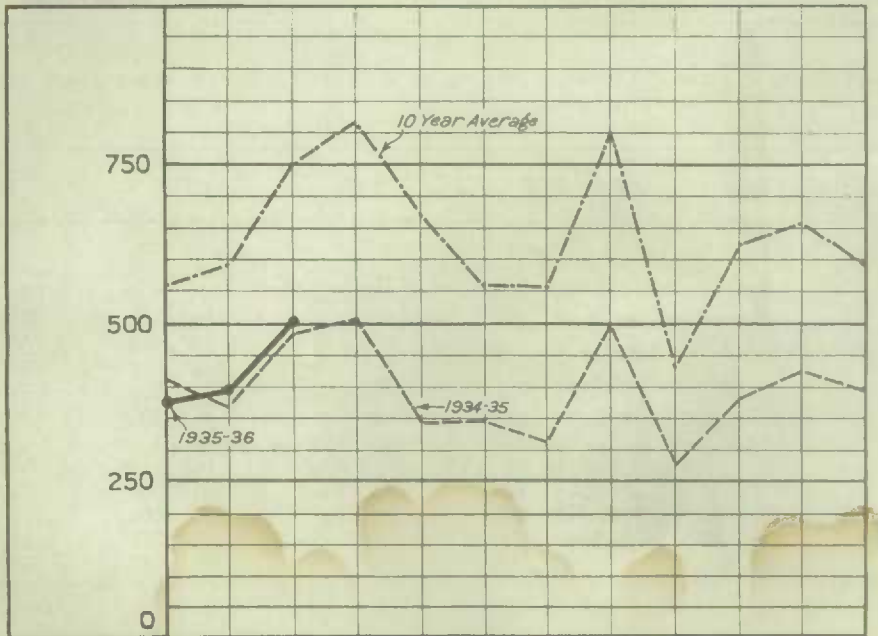


A. S. O. N. D. J. F. M. A. M. J. J.

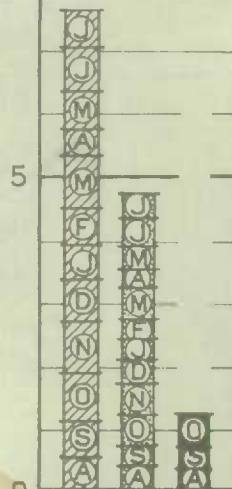
WHEAT FLOUR EXPORT

THOUSAND
BARRELS

MILLION
BARRELS



CUMULATIVE
COMPARISON



A. S. O. N. D. J. F. M. A. M. J. J.

----- 10 YEAR AVERAGE 1925-26 TO 1934-35
 ----- 1934-1935
 —●— 1935-1936

