

Published by Authority of the Hon. W. D. Euler, M.P.,
Minister of Trade and Commerce

DOMINION BUREAU OF STATISTICS - CANADA
AGRICULTURAL BRANCH

Dominion Statistician:
Chief, Agricultural Branch:

R. H. Coats, LL.D., F.R.S.C., F.S.S. (Hon.)
T. W. Grindley, Ph.D.

CANADIAN MILLING STATISTICS
December, 1935.

Ottawa, Canada, January 31, 1936.- The Dominion Bureau of Statistics publishes, herewith, preliminary statistics of grains ground and products for December, 1935, with comparisons for the previous year, inventory for the month and wheat flour exports.

The daily capacity reporting for December, 1935 amounted to 93,882 barrels.

SUMMARY

During the month of December, 1935, 4,358,625 bushels of wheat were ground in Canadian mills compared with 4,360,882 bushels for the corresponding month of the previous year. With the exception of buckwheat, coarse grains were higher than for December, 1934.

Grains ground for the month of December, 1935 are shown in bushels with comparative figures for the same month of the previous year in brackets: Wheat 4,358,625 (4,360,882); Oats 1,026,706 (715,529); Corn 174,963 (111,141); Barley 98,350 (62,243); Buckwheat 20,187 (24,258); and Mixed Grain 1,969,230 (1,636,179).

Mill stocks of wheat on December 31, 1935 amounted to 12,424,120 bushels, while for the same month in 1934 the amount was 11,401,315 bushels.

Flour production in December, 1935 amounted to 957,219 barrels compared with 969,482 barrels for the same month last year. Exports of flour in December, 1935 amounted to 443,828 barrels compared with 340,751 barrels in December, 1934.

MILL GRINDINGS

The following table shows the amount of wheat, oats, corn, barley, buckwheat and mixed grain milled for the month of December, 1935 by merchant and custom mills in Canada according to divisions, with comparative totals for the same month last year and stocks on hand at December 31, 1935 (in bushels):-

Grain	Quantities Ground				Stocks on hand, December 31, 1935		
	Merchant Mills	Custom Mills	Total December, 1935	Total December, 1934	Merchant Mills	Custom Mills	Total December 31, 1935
<u>EASTERN DIVISION</u>							
Wheat	2,141,802	111,613	2,253,415	2,218,330	5,949,814	99,646	6,049,460
Oats	423,367	162,935	586,302	496,533	339,013	72,030	411,043
Corn	65,724	107,920	173,644	109,115	299,507	21,831	321,338
Barley	18,574	41,515	60,089	37,886	82,593	22,085	104,678
Buckwheat	264	19,923	20,187	24,258	1,372	6,811	8,183
Mixed Grain	28,844	1,890,830	1,919,674	1,577,025	3,809	20,008	23,817
<u>WESTERN DIVISION</u>							
Wheat	2,016,296	88,914	2,105,210	2,142,552	6,323,877	50,783	6,374,660
Oats	400,978	39,426	440,404	218,996	814,508	11,339	825,847
Corn	1,319	-	1,319	2,026	26,405	40	26,445
Barley	20,536	17,725	38,261	24,357	38,156	4,873	43,029
Buckwheat	-	-	-	-	-	-	-
Mixed Grain	-	49,556	49,556	59,154	-	1,126	1,126
<u>DOMINION OF CANADA</u>							
Wheat	4,158,098	200,527	4,358,625	4,360,882	12,273,691	150,429	12,424,120
Oats	824,345	202,361	1,026,706	715,529	1,153,521	83,369	1,236,890
Corn	67,043	107,920	174,963	111,141	325,912	21,871	347,783
Barley	39,110	59,240	98,350	62,243	120,749	26,958	147,707
Buckwheat	264	19,923	20,187	24,258	1,372	6,811	8,183
Mixed Grain	28,844	1,940,386	1,969,230	1,636,179	3,809	21,134	24,943

- 2 - WILLINGS

The following table shows the production from wheat and coarse grains ground in merchant and custom mills in Canada for the month of December, 1935, according to divisions, with comparative totals for the same month last year and stocks on hand at December 31, 1935:-

Products	Unit of Measure	Production from Grindings				Stocks on hand Dec. 31
		Eastern Division	Western Division	Total Dec. 1935	Total Dec. 1934	
<u>Wheat Flour</u>						
Manitoba Sp. P. No. 1	Barrels	168,129	118,089	286,218	289,434	306,346
Manitoba Sp. P. No. 2	"	161,616	130,232	291,848	294,203	172,815
Ontario Winter Straight	"	62,129	-	62,129	36,480	21,616
All other	"	88,905	190,796	279,701	311,390	588,582
Total Flour	"	480,779	439,117	919,896	931,507	1,089,359
<u>Sundry Cereals</u>						
Low Grade of Feed Flour	Barrels	20,364	16,959	37,323	37,975	29,439
Bran	Tons	8,050	7,171	15,221	14,032	9,102
Shorts	"	7,470	7,835	15,305	16,025	11,157
Middlings	"	2,306	2,152	4,458	3,938	5,871
All Other Offal	"	3,746	2,846	6,592	3,768	3,376
Oatmeal	Pounds	475,888	217,098	692,986	458,890	807,364
Rolled Oats	"	5,595,300	5,780,344	11,375,644	7,587,664	8,108,649
Corn Flour and Meal	"	1,543,590	-	1,543,590	1,036,210	498,904
Barley, Pot and Pearl	"	59,630	153,860	213,490	140,994	109,740
Buckwheat Flour	"	362,437	-	362,437	393,896	14,276
<u>Ground Feed</u>						
Ground Oats	Pounds	6,078,011	2,418,252	8,496,263	7,838,877	704,270
Cracked Corn	"	5,776,398	73,878	5,850,276	4,146,429	848,686
Ground Barley	"	2,157,701	1,508,998	3,666,699	2,638,779	374,410
Mixed Grain	"	85,558,429	2,208,983	87,767,412	73,686,590	112,692

/ Including Coarse Grain Offal.

Canada's flour production for the month of December, 1935 though greatly reduced in volume from the previous month, amounted to 957,219 barrels and compared favourably with 969,482 barrels for the same month in 1934. Wheat offal was firm with bran 15,221 (14,032) tons, shorts 15,305 (16,025) tons, and middlings 4,458 (3,938) tons.

Cereal production for December, 1935 was as follows with figures for the same month last year in brackets and quantities in pounds: Oatmeal, 692,986 (458,890); Rolled Oats, 11,375,644 (7,587,664); Corn Flour and Meal, 1,543,590 (1,036,210); Pot and Pearl Barley, 213,490 (140,994), and Buckwheat flour, 362,437 (393,896).

Animal feed products compared as follows: Ground Oats, 8,496,263 (7,838,877) pounds; Cracked Corn, 5,850,276 (4,146,429) pounds; Ground Barley, 3,666,699 (2,638,779) pounds; and Mixed Grain, 87,767,412 (73,686,590) pounds.

Total flour stocks for the month of December, 1935 amounted to 1,118,798 barrels compared with 1,250,707 barrels for the same month in 1934 and 1,200,150 barrels for the previous month.

SUMMARY OF MILL GRINDINGS

The following table summarizes the mill grind of wheat, oats, corn, barley and mixed grain for the first five months of the crop year 1935-36, with comparative figures for 1934-35:-

Months	Wheat	Oats	Corn	Barley	Mixed Grain
(Bushels)					
August, 1935	5,230,795	733,282	229,976	59,523	913,719
September	6,932,568	1,151,068	218,914	68,880	1,134,815
October	8,261,087	1,543,665	218,229	99,278	1,627,948
November	7,262,558	1,513,259	166,813	128,150	1,778,718
December	4,358,625	1,026,706	174,963	98,350	1,969,230
T O T A L	32,045,633	5,967,980	1,008,895	454,181	7,424,430
TOTAL LAST YEAR	31,399,326	4,946,325	805,378	320,433	6,189,305

SUMMARY OF MILL PRODUCTION

The following table summarizes the production of wheat flour, oatmeal, rolled oats and corn flour and meal for the first five months of the crop year 1935-36, including percentage of operation and wheat flour exports, with comparative figures for 1934-35:-

Months	Wheat Flour		Oatmeal	Rolled Oats	Corn Flour and Meal	Wheat Flour Exported
	Percentage of operation	Quantity Barrels	Pounds	Pounds	Pounds	Barrels
August, 1935	48.9	1,161,389	493,528	7,977,920	2,321,082	376,562
September	68.3	1,535,189	902,388	13,911,445	2,312,180	395,640
October	75.0	1,824,754	1,700,720	19,483,481	2,842,570	501,442
November	68.3	1,603,803	1,549,038	17,448,402	1,944,746	525,368
December	41.6	957,219	692,986	11,375,644	1,543,590	443,828
T O T A L		7,082,354	5,338,660	70,201,892	10,964,168	2,242,840
TOTAL LAST YEAR		6,992,921	3,779,003	62,797,561	8,442,958	2,112,093

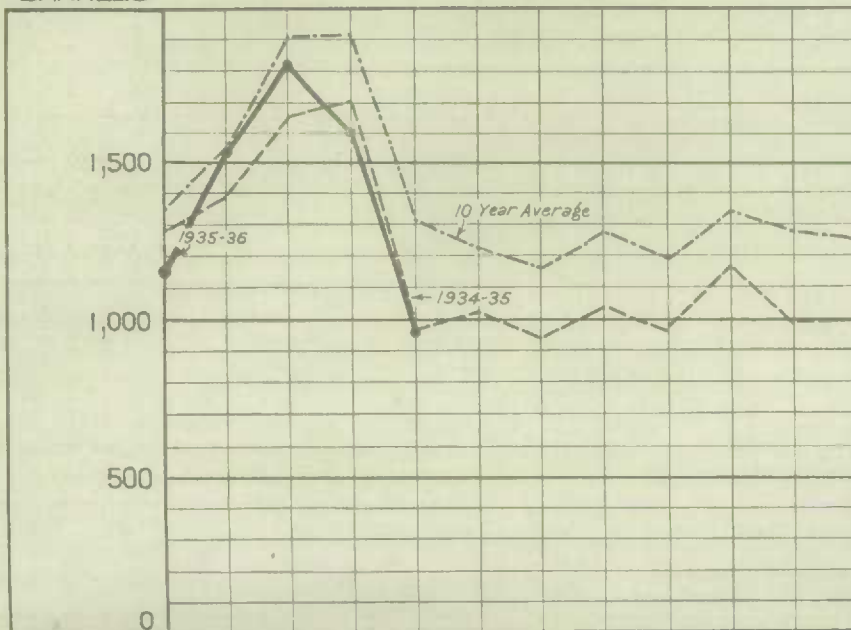
The following table gives the quantity of wheat ground and wheat flour produced, by divisions, and total flour exports for the calendar year 1935 (Preliminary):-

Months	Wheat Ground			Wheat Flour Production			Export
	Eastern Division	Western Division	Total Canada	Eastern Division	Western Division	Total Canada	Total Canada
(Bushels)				(Barrels)			(Barrels)
January	2,318,268	2,304,494	4,622,762	521,527	503,431	1,024,958	346,099
February	2,216,919	2,003,998	4,220,917	499,554	441,863	941,417	309,729
March	2,403,125	2,271,897	4,675,022	541,682	504,405	1,046,087	497,468
April	2,203,926	2,109,674	4,313,600	495,263	470,502	965,765	276,907
May	2,563,802	2,624,494	5,188,296	579,987	584,335	1,164,322	383,221
June	2,141,063	2,290,760	4,431,823	480,751	510,808	991,559	429,561
July	2,312,027	2,148,581	4,460,608	518,516	473,824	992,340	395,232
August	2,466,444	2,764,351	5,230,795	553,347	608,042	1,161,389	376,562
September	3,045,343	3,887,225	6,932,568	681,938	853,251	1,535,189	395,640
October	3,518,703	4,742,384	8,261,087	785,924	1,038,830	1,824,754	501,442
November	3,262,247	4,000,311	7,262,558	728,904	874,899	1,603,803	525,368
December	2,253,415	2,105,210	4,358,625	501,143	456,076	957,219	443,828
TOTAL, 1935	30,705,282	33,253,379	63,958,661	6,888,536	7,320,266	14,208,802	4,881,057
TOTAL, 1934	31,827,768	33,817,382	65,645,150	7,185,998	7,469,064	14,655,062	5,053,732

WHEAT FLOUR PRODUCTION

THOUSAND
BARRELS

MILLION
BARRELS



CUMULATIVE
COMPARISON

15

10

5

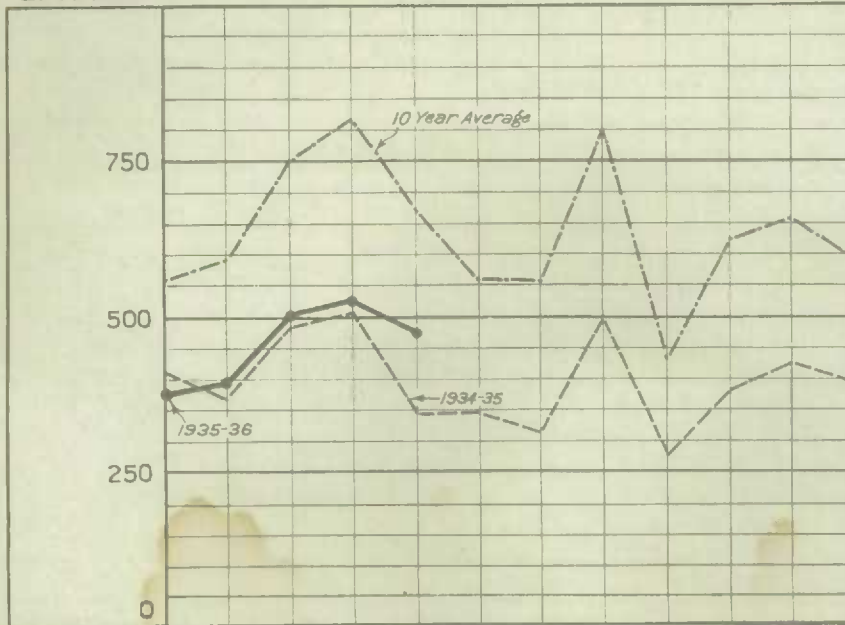
0

A. S. O. N. D. J. F. M. A. M. J. J.

WHEAT FLOUR EXPORT

THOUSAND
BARRELS

MILLION
BARRELS



CUMULATIVE
COMPARISON

5

0

A. S. O. N. D. J. F. M. A. M. J. J.

----- 10 YEAR AVERAGE 1925-26 TO 1934-35
 ----- 1934-1935
 ———— 1935-1936

///

■