

Published by Authority of the Hon. W. D. Baler, M. P.,  
Minister of Trade and Commerce

DOMINION BUREAU OF STATISTICS - CANADA  
AGRICULTURAL BRANCH

Dominion Statistician:  
Chief, Agricultural Branch:

R. H. Coats, LL.D., F.R.S.C., F.S.S. (Hon.)  
T. W. Grindley, Ph.D.

CANADIAN MILLING STATISTICS

January, 1936.

Ottawa, Canada, March 6, 1936.- The Dominion Bureau of Statistics publishes, herewith, preliminary statistics of grains ground and products for January, 1936, with comparisons for the previous year, inventory for the month and wheat flour exports.

The daily capacity reporting for January, 1936 amounted to 95,016 barrels.

SUMMARY

During the month of January, 1936, 4,460,277 bushels of wheat were ground in Canadian mills compared with 4,622,762 bushels for the corresponding month of the previous year. Buckwheat was lower than for January, 1935, while oats, corn, barley and mixed grains were higher.

Grains ground for the month of January, 1936 are shown in bushels with comparative figures for the same month of the previous year in brackets: Wheat 4,460,277 (4,622,762); Oats 924,352 (954,909); Corn 175,800 (120,984); Barley 104,313 (73,467); Buckwheat 7,555 (16,000); and Mixed Grain 1,837,890 (1,512,919).

Mill stocks of wheat on January 31, 1936 amounted to 11,895,175 bushels, while for the same month in 1935 the amount was 10,337,195 bushels.

Flour production in January, 1936 amounted to 981,988 barrels compared with 1,024,958 barrels for the same month last year. Exports of flour in January, 1936 amounted to 314,311 barrels compared with 346,099 barrels in January, 1935.

MILL GRINDINGS

The following table shows the amount of wheat, oats, corn, barley, buckwheat and mixed grain milled for the month of January, 1936, by merchant and custom mills in Canada according to divisions, with comparative totals for the same month last year and stocks on hand at January 31, 1936 (in bushels):-

Grain	Quantities Ground				Stocks on hand, January 31, 1936		
	Merchant Mills	Custom Mills	Total January, 1936	Total January, 1935	Merchant Mills	Custom Mills	Total January 31, 1936
<u>EASTERN DIVISION</u>							
Wheat	2,275,491	124,548	2,400,039	2,318,268	5,358,241	91,741	5,449,982
Oats	439,565	150,926	590,491	427,452	198,282	63,369	261,651
Corn	66,037	107,861	173,898	119,310	304,006	18,243	322,249
Barley	13,709	39,833	53,542	40,312	83,209	17,736	100,945
Buckwheat	95	7,460	7,555	16,000	1,403	5,361	6,764
Mixed Grain	31,144	1,726,235	1,757,379	1,465,355	3,363	14,614	17,977
<u>WESTERN DIVISION</u>							
Wheat	1,969,110	91,128	2,060,238	2,304,494	6,382,844	62,349	6,445,193
Oats	258,768	75,093	333,861	327,457	845,021	11,990	857,011
Corn	1,902	-	1,902	1,674	13,517	504	14,021
Barley	22,421	28,350	50,771	33,155	29,674	6,510	36,184
Buckwheat	-	-	-	-	-	-	-
Mixed Grain	9	80,502	80,511	47,564	652	1,125	1,777
<u>DOMINION OF CANADA</u>							
Wheat	4,244,601	215,676	4,460,277	4,622,762	11,741,085	154,090	11,895,175
Oats	698,333	226,019	924,352	754,909	1,043,303	75,359	1,118,662
Corn	67,939	107,861	175,800	120,984	317,523	18,747	336,270
Barley	36,130	68,183	104,313	73,467	112,883	24,246	137,129
Buckwheat	95	7,460	7,555	16,000	1,403	5,361	6,764
Mixed Grain	31,153	1,806,737	1,837,890	1,512,919	4,015	15,739	19,754

# MILLINGS

The following table shows the production from wheat and coarse grains ground in merchant and custom mills in Canada for the month of January, 1936, according to divisions, with comparative totals for the same month last year and stocks on hand at January 31, 1935:-

Products	Unit of Measure	Production from Grindings				Stocks
		Eastern Division	Western Division	Total Jan., 1936	Total Jan., 1935	on hand Jan. 31
<u>Wheat Flour</u>						
Manitoba Sp. P. No. 1	Barrels	181,942	114,291	296,233	313,969	294,005
Manitoba Sp. P. No. 2	"	168,754	133,402	302,156	307,375	186,547
Ontario Winter Straight	"	56,801	-	56,801	39,444	23,094
All Other	"	104,765	181,476	286,241	313,916	534,970
Total Flour	"	512,262	429,169	941,431	979,704	1,038,616
<u>Sundry Cereals</u>						
Low Grade of Feed Flour	Barrels	23,327	17,230	40,557	45,254	31,633
Bran	Tons	8,860	7,021	15,881	15,406	9,405
Shorts	"	7,373	7,638	15,011	15,581	12,348
Middlings	"	2,299	1,646	3,945	5,123	4,915
All Other Offal	"	3,328	1,752	5,080	4,710	2,357
Oatmeal	Pounds	411,404	241,461	652,865	649,896	824,193
Rolled Oats	"	5,837,220	3,261,416	9,098,636	8,379,451	6,321,918
Corn Flour and Meal	"	1,772,118	-	1,772,118	894,306	485,092
Barley, Pot and Pearl	"	127,606	138,091	265,697	226,986	107,241
Buckwheat Flour	"	122,070	-	122,070	284,220	900
<u>Ground Feed</u>						
Ground Oats	Pounds	5,487,182	3,849,940	9,337,122	7,646,918	1,340,250
Cracked Corn	"	5,637,080	106,492	5,743,572	4,253,919	429,566
Ground Barley	"	2,159,500	2,147,112	4,306,612	2,898,199	400,050
Mixed Grain	"	78,440,683	3,525,660	81,966,343	67,782,597	217,795

\* Including Coarse Grain Offal.

Flour production for the month of January, 1936 amounted to 981,988 barrels compared with 1,024,958 barrels for the same month last year. Wheat offal was consistent, with bran 15,881 (15,406) tons, shorts 15,011 (15,581) tons and middlings 3,945 (5,123) tons.

Cereal production for January, 1936 was as follows with figures for the same month last year in brackets and the quantities in pounds: Oatmeal, 652,865 (649,896); Rolled Oats, 9,098,636 (8,379,451); Corn Flour and Meal, 1,772,118 (894,306); Pot and Pearl Barley, 265,697 (226,986); and Buckwheat Flour, 122,070 (284,220).

Animal feed products were higher than for the previous year with Ground Oats 9,337,122 (7,646,918) pounds, Cracked Corn 5,743,572 (4,253,919) pounds, Ground Barley 4,306,612 (2,898,199) pounds and Mixed Grain 81,966,343 (67,782,597) pounds.

Total flour stocks for the month of January, 1936 amounted to 1,070,249 barrels compared with 1,304,668 barrels for the same month in 1935 and 1,118,798 barrels for the previous month.

# SUMMARY OF MILL GRINDINGS

The following table summarizes the mill grind of wheat, oats, corn, barley and mixed grain for the first six months of the crop year 1935-36, with comparative figures for 1934-35:-

Months	Wheat	Oats	Corn	Barley	Mixed Grain
	(Bushels)				
August, 1935	5,230,795	733,282	229,976	55,523	913,719
September	6,932,568	1,151,068	213,914	68,820	1,134,815
October	8,261,087	1,543,665	218,229	95,278	1,627,948
November	7,262,558	1,513,259	166,813	128,150	1,778,718
December	4,358,625	1,026,706	174,963	98,350	1,969,230
January, 1936	4,460,277	924,352	175,800	104,313	1,837,890
T O T A L	36,505,910	6,892,332	1,184,695	553,494	9,262,320
TOTAL LAST YEAR	36,022,088	5,701,234	926,362	393,900	7,702,224

# SUMMARY OF MILL PRODUCTION

The following table summarizes the production of wheat flour, oatmeal, rolled oats and corn flour and meal for the first six months of the crop year 1935-36, including percentage of operation and wheat flour exports, with comparative figures for 1934-35:-

Months	Wheat Flour		Oatmeal	Rolled Oats	Corn Flour and Meal	Wheat Flour Exported
	Percentage of operation	Quantity Barrels	Pounds	Pounds	Pounds	Barrels
August, 1935	48.9	1,161,389	493,528	7,977,920	2,321,082	376,562
September	68.3	1,535,189	902,388	13,911,445	2,312,180	395,640
October	75.0	1,824,754	1,700,720	19,488,481	2,842,570	501,442
November	68.3	1,603,803	1,549,038	17,448,402	1,944,746	525,368
December	41.5	957,219	692,986	11,375,644	1,543,590	443,828
January, 1936	40.3	981,988	652,865	9,098,636	1,772,118	314,311
T O T A L		8,064,342	5,991,525	79,300,528	12,736,286	2,557,151
TOTAL LAST YEAR		8,017,879	4,428,899	71,177,012	9,337,264	2,458,192

The following table shows the manufacture of corn flour and meal in Canada, crop years 1929-30 to 1934-35:-

Months	1929-30	1930-31	1931-32	1932-33	1933-34	* 1934-35
	(Pounds)					
August	2,087,474	2,195,274	2,277,749	1,611,076	1,514,590	2,215,458
September	2,398,689	1,777,638	2,039,254	1,325,254	1,320,404	1,894,880
October	2,615,639	1,926,086	2,288,754	1,294,032	2,153,041	1,725,600
November	1,720,774	1,495,621	2,588,950	1,887,653	2,109,060	1,570,810
December	948,387	1,070,225	1,714,434	1,520,080	1,347,928	1,036,210
January	1,315,234	1,155,518	1,802,005	759,972	1,428,968	894,306
February	1,475,302	1,894,492	2,309,160	1,042,878	1,447,127	1,491,528
March	1,014,958	1,947,760	2,233,622	2,196,044	1,181,990	1,560,504
April	1,241,786	1,822,836	2,591,116	1,983,520	1,141,966	1,448,836
May	2,367,464	2,130,887	1,908,770	2,248,758	1,398,166	2,013,518
June	1,772,632	2,072,918	2,099,028	1,266,352	1,726,506	1,914,815
July	2,302,054	2,612,240	2,628,909	1,633,596	1,748,106	2,182,370
T O T A L	21,260,393	22,105,495	26,481,751	18,769,215	18,517,852	19,948,835

x Preliminary figures.





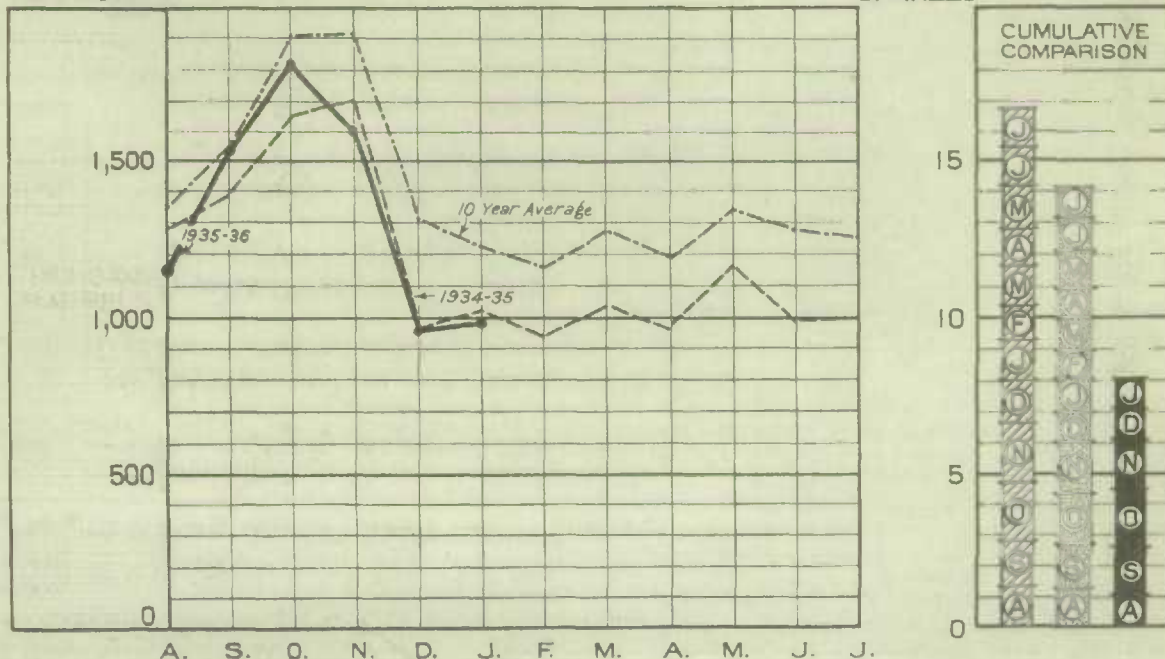
1010633797

4

## WHEAT FLOUR PRODUCTION

THOUSAND  
BARRELS

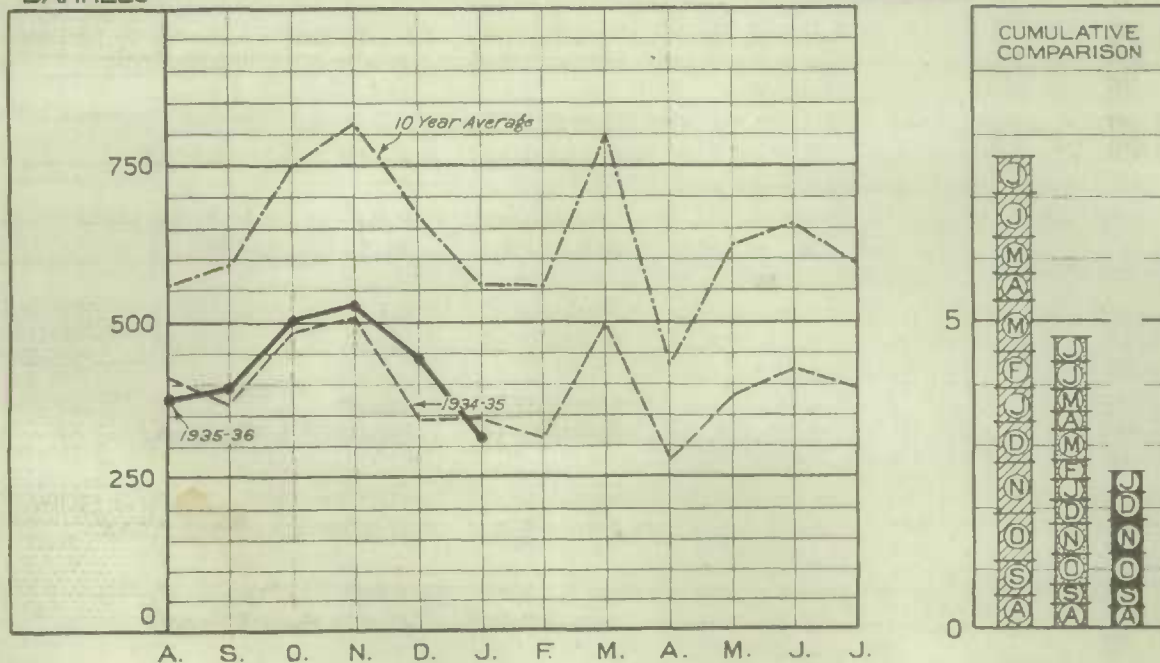
MILLION  
BARRELS



## WHEAT FLOUR EXPORT

THOUSAND  
BARRELS

MILLION  
BARRELS



----- 10 YEAR AVERAGE 1925-26 TO 1934-35  
----- 1934-1935  
----- 1935-1936

