

Published by Authority of the HON. W. D. Buler, M.P.,
Minister of Trade and Commerce

DOMINION BUREAU OF STATISTICS - CANADA
AGRICULTURAL BRANCH

Dominion Statistician:
Chief, Agricultural Branch:

R. H. Coats, LL.D., F.R.S.C., F.S.S. (Hon.)
T. W. Grindley, Ph.D.

CANADIAN MILLING STATISTICS

November, 1936.

Ottawa, Canada, January 7, 1936.- The Dominion Bureau of Statistics publishes, herewith, preliminary statistics of grains ground and products for November, 1936, with comparisons for the previous year, inventory for the month and wheat flour exports.

The daily capacity reporting for November, 1936 amounted to 94,508 barrels.

SUMMARY

During the month of November, 1936, 6,594,206 bushels of wheat were ground in Canadian mills compared with 7,262,558 bushels for the corresponding month of the previous year. Coarse grains, with the exception of corn, were lower than for November, 1935.

Grains ground for the month of November, 1936 are shown in bushels with comparative figures for the same month of the previous year in brackets: Wheat 6,594,206 (7,262,558); Oats 1,241,218 (1,513,259); Corn 247,246 (166,813); Barley 120,751 (128,150); Buckwheat 28,912 (29,413); and Mixed Grain 1,691,600 (1,778,718).

Mill Stocks of wheat on November 30, 1936 amounted to 10,258,857 bushels, while for the same month in 1935 the amount was 12,491,739 bushels.

Flour production in November, 1936 amounted to 1,459,388 barrels compared with 1,603,803 barrels for the same month last year. Exports of flour in November, 1936 amounted to 408,653 barrels compared with 525,368 barrels in November, 1935.

MILL GRINDINGS

The following table shows the amount of wheat, oats, corn, barley, buckwheat and mixed grain milled for the month of November, 1936, by merchant and custom mills in Canada according to divisions, with comparative totals for the same month last year and stocks on hand at November 30, 1936 (in bushels):-

Grain	Quantities Ground				Stocks on hand, November, 30, 1936		
	Merchant Mills	Custom Mills	Total November, 1936	Total November, 1935	Merchant Mills	Custom Mills	Total November 30, 1936
<u>EASTERN DIVISION</u>							
Wheat	2,662,972	137,907	2,800,879	3,262,247	4,547,207	102,897	4,650,104
Oats	473,324	197,022	670,346	776,760	403,398	42,965	446,363
Corn	103,512	141,186	244,698	165,303	156,478	37,029	193,507
Barley	22,414	32,368	54,782	66,315	94,341	10,990	105,331
Buckwheat	-	28,912	28,912	29,413	2,937	5,075	8,012
Mixed Grain	25,313	1,575,038	1,600,351	1,699,110	37	32,293	32,330
<u>WESTERN DIVISION</u>							
Wheat	3,596,331	196,996	3,793,327	4,000,311	5,403,008	205,745	5,608,753
Oats	484,322	86,550	570,872	736,499	1,516,023	8,791	1,524,814
Corn	2,473	75	2,548	1,510	22,412	704	23,116
Barley	27,471	38,498	65,969	61,835	25,439	5,517	30,956
Buckwheat	-	-	-	-	-	-	-
Mixed Grain	50	91,199	91,249	79,608	30	1,191	1,221
<u>DOMINION OF CANADA</u>							
Wheat	6,259,303	334,903	6,594,206	7,262,558	9,950,215	308,642	10,258,857
Oats	957,646	283,572	1,241,218	1,513,259	1,919,421	51,756	1,971,177
Corn	105,985	141,261	247,246	166,813	178,890	37,733	216,623
Barley	49,885	70,866	120,751	128,150	119,780	16,507	136,287
Buckwheat	-	28,912	28,912	29,413	2,937	5,075	8,012
Mixed Grain	25,363	1,666,237	1,691,600	1,778,718	67	33,484	33,551

MILLINGS

The following table shows the production from wheat and coarse grains ground in merchant and custom mills in Canada for the month of November, 1936, according to divisions, with comparative totals for the same month last year and stocks on hand at November 30, 1936:-

Products	Unit of Measure	Production from Grindings				Stocks on hand Nov. 30, 1936
		Eastern Division	Western Division	Total Nov., 1936	Total Nov., 1935	
<u>Wheat Flour</u>						
Manitoba Sp. P. No. 1	Barrels	244,291	225,710	470,001	505,303	323,883
Manitoba Sp. P. No. 2	"	178,884	256,193	435,037	492,359	197,305
Ontario Winter Straight	"	48,768	-	48,768	78,516	15,629
All Other	"	121,164	331,556	452,720	459,501	646,172
Total Flour	"	593,067	813,459	1,406,526	1,535,679	1,182,989
<u>Sundry Cereals</u>						
Low Grade or Feed Flour	Barrels	27,759	25,103	52,862	68,124	16,329
Bran	Tons	9,901	12,306	22,207	26,125	5,586
Shorts	"	11,481	14,930	26,411	25,835	6,699
Middlings	"	3,550	3,200	6,750	6,749	2,811
All Other Offal	"	4,043	3,128	7,171	9,121	2,373
Oatmeal	Pounds	374,948	507,532	882,480	1,549,038	607,991
Rolled Oats	"	7,088,040	6,900,975	13,989,015	17,448,402	7,470,031
Corn Flour and Meal	"	2,230,422	-	2,230,422	1,944,746	381,986
Barley, Pot and Pearl	"	159,460	142,247	301,707	363,638	103,330
Buckwheat Flour	"	475,380	-	475,380	529,644	10,000
<u>Ground Feed</u>						
Ground Oats	Pounds	7,608,945	4,270,460	8,879,405	9,896,778	1,458,100
Cracked Corn	"	8,273,249	142,638	8,415,937	5,571,943	451,974
Ground Barley	"	1,989,322	2,868,307	4,857,629	4,535,626	272,260
Mixed Grain	"	71,388,981	3,995,552	75,384,533	79,374,452	36,300

/ Including Coarse Grain Offal.

Flour production, amounting to 1,459,388 barrels, was the lowest November production recorded since 1920, when 1,081,115 barrels were manufactured, and was lower than the previous month's production which consisted of 1,603,803 barrels. Wheat offal output declined in the aggregate, with bran 22,207 (26,125) tons, shorts 26,411 (25,835) tons, and middlings 6,750 (6,749) tons.

Cereal production for the month of November, 1936 was as follows with the figures for the same month last year in brackets and the quantities in pounds: Oatmeal, 882,480 (1,549,038); Rolled Oats, 13,989,015 (17,448,402); Corn Flour and Meal, 2,230,422 (1,944,746); Pot and Pearl Barley, 301,707 (363,638); and Buckwheat Flour, 475,380 (529,644).

Animal feed products compared as follows: Ground Oats, 8,879,405 (9,896,778) pounds; Cracked Corn, 8,415,937 (5,571,943) pounds; Ground Barley, 4,857,629 (4,535,626) pounds; and Mixed Grain, 75,384,533 (79,374,452) pounds.

Total flour stocks for the month of November amounted to 1,199,318 barrels compared with 1,200,160 barrels for the same month last year and 1,133,032 barrels for the previous month.

SUMMARY OF MILL GRINDINGS

The following table summarizes the mill grind of wheat, oats, corn, barley and mixed grain for the first four months of the crop year 1936-37, with comparative figures for 1935-36:-

Months	Wheat	Oats	Corn	Barley	Mixed Grain
			(Bushels)		
August, 1936	6,226,419	1,076,262	305,902	82,099	976,864
September	6,866,306	1,107,886	273,700	104,696	1,269,421
October	7,681,108	1,334,687	306,503	129,864	1,597,656
November	6,594,206	1,241,218	247,246	120,751	1,691,600
T O T A L	27,368,539	4,760,053	1,133,351	437,410	5,535,541
TOTAL LAST YEAR	27,687,008	4,941,274	833,932	355,831	5,455,200

SUMMARY OF MILL PRODUCTION

The following table summarizes the production of wheat flour, oatmeal, rolled oats and corn flour and meal for the first four months of the crop year 1936-37, including percentage of operation and wheat flour exports, with comparative figures for 1935-36:-

Months	Wheat Flour		Oatmeal Pounds	Rolled Oats Pounds	Corn Flour and Meal Pounds	Wheat Flour Exported Barrels
	Percentage of operation	Quantity Barrels				
August, 1936	57.0	1,362,679	561,324	13,725,254	3,018,322	387,728
September	64.7	1,516,123	669,032	13,431,935	3,100,740	378,318
October	69.7	1,701,267	828,039	15,644,707	2,641,308	464,013
November	65.3	1,459,388	882,480	13,989,015	2,230,422	408,653
T O T A L		6,039,457	2,940,875	56,790,911	10,990,792	1,638,712
TOTAL LAST YEAR		6,125,135	4,645,674	58,826,248	9,420,578	1,799,012

The following table shows the manufacture of rolled oats in Canada for the calendar years 1930 to 1935:-

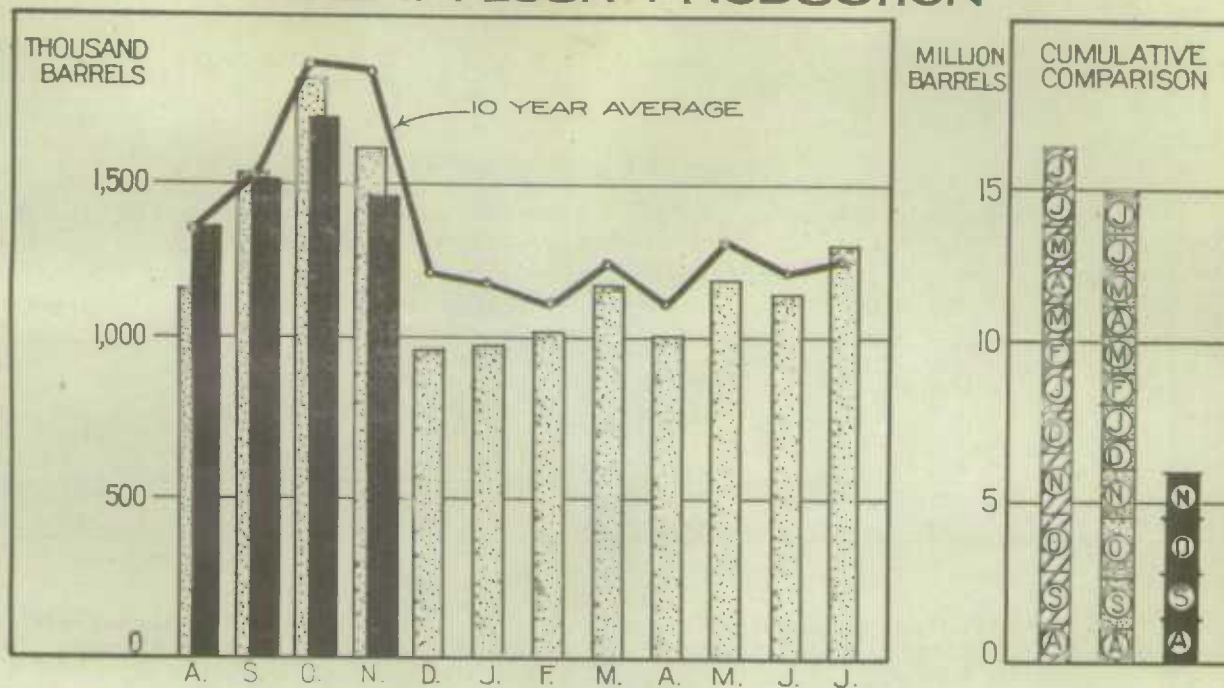
Months	1930	1931	1932	1933	1934	x 1935
	(Pounds)					
January	6,124,696	10,905,497	9,566,907	9,015,444	10,261,459	8,379,451
February	9,528,470	10,399,104	9,216,882	7,613,656	9,338,950	8,739,753
March	8,439,370	8,693,573	8,408,031	8,588,777	7,866,835	6,424,542
April	7,335,362	6,941,276	6,619,264	5,585,475	6,397,869	6,513,572
May	6,906,250	7,724,670	6,315,048	6,464,036	6,132,154	7,538,950
June	8,593,230	9,567,277	8,002,390	7,634,723	9,556,820	9,223,425
July	10,145,257	12,201,352	8,940,843	10,030,017	10,292,971	7,650,617
August	10,167,012	9,703,392	12,301,642	11,258,685	10,644,925	7,977,920
September	13,825,936	14,549,397	14,124,180	12,093,243	13,521,725	13,911,445
October	13,588,271	17,603,960	16,765,969	15,676,287	16,697,250	19,488,481
November	13,326,255	20,796,084	17,871,610	16,416,025	14,345,997	17,448,402
December	10,723,499	11,513,316	10,532,277	7,468,493	7,587,664	11,375,644
T O T A L	118,703,608	140,598,898	128,665,043	117,844,461	122,644,619	124,672,202

x Preliminary figures from August to December 1935.



1010633807

WHEAT FLOUR PRODUCTION



WHEAT FLOUR EXPORT

