

Published by Authority of the Hon. W. D. Baler, M.P.,  
Minister of Trade and Commerce

DOMINION BUREAU OF STATISTICS - CANADA  
AGRICULTURAL BRANCH

Dominion Statistician:  
Chief, Agricultural Branch:

R. H. Coats, LL.D., F.R.S.C., F.S.S. (Hon.)  
T. W. Grindley, Ph.D.

CANADIAN MILLING STATISTICS

December, 1936

Ottawa, Canada, February 4, 1937. - The Dominion Bureau of Statistics publishes, herewith preliminary statistics of grains ground and products for December, 1936, with comparisons for the previous year, inventory for the month and wheat flour exports.

The daily capacity reporting for December, 1936 amounted to 95,726 barrels.

SUMMARY

During the month of December, 1936, 4,921,327 bushels of wheat were ground in Canadian mills compared with 4,358,625 bushels for the corresponding month of the previous year. With the exceptions of buckwheat and mixed grains, coarse grains were higher than for December, 1935.

Grains ground for the month of December, 1936 are shown in bushels with comparative figures for the same month of the previous year in brackets: Wheat 4,921,327 (4,358,625); Oats 1,131,106 (1,026,706); Corn 230,583 (174,963); Barley 100,179 (98,350); Buckwheat 19,387 (20,187); and Mixed Grain 1,673,473 (1,969,230).

Mill stocks of wheat on December 31, 1936 amounted to 10,117,822 bushels, while for the same month in 1935 the amount was 12,424,120 bushels.

Flour production in December, 1936 amounted to 1,090,392 barrels compared with 957,219 barrels for the same month last year. Exports of flour in December 1936 amounted to 475,262 barrels compared with 443,828 barrels in December, 1935.

MILL GRINDINGS

The following table shows the amount of wheat, oats, corn, barley, buckwheat and mixed grain milled for the month of December, 1936 by merchant and custom mills in Canada according to divisions, with comparative totals for the same month last year and stocks on hand at December 31, 1936 (in bushels): -

Grain	Quantities Ground				Stocks on hand, December 31, 1936		
	Merchant Mills	Custom Mills	Total December, 1936	Total December, 1935	Merchant Mills	Custom Mills	Total December 31, 1936
<u>EASTERN DIVISION</u>							
Wheat	2,574,906	133,831	2,708,737	2,253,415	5,148,563	89,721	5,238,284
Oats	518,504	185,549	704,053	586,302	214,071	36,494	250,565
Corn	95,507	182,882	278,389	173,644	185,088	110,028	295,116
Barley	25,445	37,110	62,555	60,089	51,885	9,226	61,111
Buckwheat	-	19,387	19,387	20,187	1,409	4,450	5,859
Mixed Grain	35,281	1,570,736	1,606,017	1,919,674	4,880	19,236	24,116
<u>WESTERN DIVISION</u>							
Wheat	2,102,529	110,061	2,212,590	2,105,210	4,794,728	84,810	4,879,538
Oats	369,063	57,990	427,053	440,404	1,520,220	10,941	1,531,161
Corn	2,074	120	2,194	1,319	26,109	504	26,613
Barley	14,503	23,121	37,624	38,261	22,002	6,497	28,499
Buckwheat	-	-	-	-	-	-	-
Mixed Grain	36	67,420	67,456	49,556	448	682	1,130
<u>DOMINION OF CANADA</u>							
Wheat	4,677,435	243,892	4,921,327	4,358,625	9,943,291	174,531	10,117,822
Oats	887,567	243,539	1,131,106	1,026,706	1,734,291	47,435	1,781,726
Corn	97,581	183,002	280,583	174,963	211,197	110,532	321,729
Barley	39,948	60,231	100,179	98,350	73,887	15,723	89,610
Buckwheat	-	19,387	19,387	20,187	1,409	4,450	5,859
Mixed Grain	35,317	1,638,156	1,673,473	1,969,230	5,328	19,918	25,246

MILLINGS

The following table shows the production from wheat and coarse grains ground in merchant and custom mills in Canada for the month of December, 1936, according to divisions, with comparative totals for the same month last year and stocks on hand at December 31, 1936: -

Products	Unit of Measure	Production from Grindings				Stocks on hand
		Eastern Division	Western Division	Total Dec. 1936	Total Dec. 1935	Dec. 31, 1936
<u>Wheat Flour</u>						
Manitoba Sp. P. No. 1	Barrels	228,336	129,506	357,842	286,218	327,725
Manitoba Sp. P. No. 2	"	174,768	129,496	304,264	291,848	207,250
Ontario Winter Straight	"	74,104	-	74,104	62,129	17,348
All other	"	103,510	215,023	318,533	279,701	571,660
Total Flour	"	580,718	474,025	1,054,743	919,896	1,123,983
<u>Sundry Cereals</u>						
Low Grade of Feed Flour	Barrels	20,585	15,064	35,649	37,323	25,974
Bran	Tons	9,915	7,358	17,273	15,221	5,095
Shorts	"	8,988	8,428	17,416	15,305	6,113
Middlings	"	3,233	2,054	5,287	4,458	3,257
† All Other Offal	"	3,436	2,459	5,895	6,592	1,935
Oatmeal	Pounds	415,324	313,348	728,672	692,986	479,425
Rolled Oats	"	7,627,320	5,181,614	12,808,934	11,375,644	7,123,556
Corn Flour and Meal	"	1,973,524	-	1,973,524	1,543,590	561,574
Barley, Pot and Pearl	"	177,558	117,208	294,766	213,490	137,820
Buckwheat Flour	"	311,476	-	311,476	362,437	2,000
<u>Ground Feed</u>						
Ground Oats	Pounds	7,724,573	3,135,434	10,860,007	8,496,263	1,260,840
Cracked Corn	"	11,180,232	122,948	11,303,180	5,850,276	450,234
Ground Barley	"	2,755,443	1,586,423	4,341,866	3,666,699	473,800
Mixed Grain	"	71,124,745	3,011,518	74,136,263	87,767,412	231,496
† Including Coarse Grain Offal.						

† Including Coarse Grain Offal.

Flour production for the month of December, 1936 amounted to 1,090,392 barrels compared with 957,219 barrels for the same month in 1935. This higher trend was shown in wheat offal with bran 17,273 (15,221) tons, shorts 17,416 (15,305) tons, and middlings 5,287 (4,458) tons.

Cereal production for December, 1936 was as follows with figures for the same month last year in brackets and the quantities in pounds: Oatmeal, 728,672 (692,986); Rolled Oats, 12,808,934 (11,375,644); Corn Flour and Meal, 1,973,524 (1,543,590); Pot and Pearl Barley, 294,766 (213,490); and Buckwheat Flour, 311,476 (362,437).

Animal feed products compared as follows: Ground Oats, 10,860,007 (8,496,263) pounds; Cracked Corn, 11,303,180 (5,850,276) pounds; Ground Barley, 4,341,866 (3,666,699) pounds; and Mixed Grain, 74,136,263 (87,767,412) pounds.

Total flour stocks for the month of December, 1936 amounted to 1,149,957 barrels compared with 1,118,798 barrels for the same month in 1935 and 1,199,318 barrels for the previous month.

# SUMMARY OF MILL GRINDINGS

The following table summarizes the mill grind of wheat, oats, corn, barley and mixed grain for the first five months of the crop year 1936-37, with comparative figures for 1935-36: -

Months	Wheat	Oats	Corn	Barley	Mixed Grain
			(Bushels)		
August, 1936	6,226,419	1,076,262	305,902	82,099	976,864
September	6,866,806	1,107,886	273,700	104,696	1,269,421
October	7,681,108	1,334,687	306,503	129,864	1,597,656
November	6,594,206	1,241,218	247,246	120,751	1,691,600
December	4,921,327	1,131,106	280,583	100,179	1,673,473
T O T A L	32,289,866	5,891,159	1,413,934	537,589	7,209,014
TOTAL LAST YEAR	32,045,633	5,967,980	1,008,895	454,181	7,424,430

# SUMMARY OF MILL PRODUCTION

The following table summarizes the production of wheat flour, oatmeal, rolled oats and corn flour and meal for the first five months of the crop year 1936-37, including percentage of operation and wheat flour exports, with comparative figures for 1935-36: -

Months	Wheat Flour		Oatmeal Pounds	Rolled Oats Pounds	Corn Flour and Meal Pounds	Wheat Flour Exported Barrels
	Percentage of operation	Quantity Barrels				
August, 1936	57.0	1,362,679	561,324	13,725,254	3,018,322	387,728
September	64.7	1,516,123	669,032	13,431,935	3,100,740	378,318
October	69.7	1,701,267	828,039	15,644,707	2,641,308	464,013
November	65.3	1,459,388	882,480	13,989,015	2,230,422	408,653
December	44.8	1,090,392	728,672	12,808,934	1,973,524	475,282
T O T A L		7,129,849	3,669,547	69,599,845	12,964,316	2,113,994
TOTAL LAST YEAR		7,082,354	5,338,660	70,201,892	10,964,168	2,242,840

The following table gives the quantity of wheat ground and wheat flour produced, by divisions, and total flour exports for the calendar year 1936 (Preliminary): -

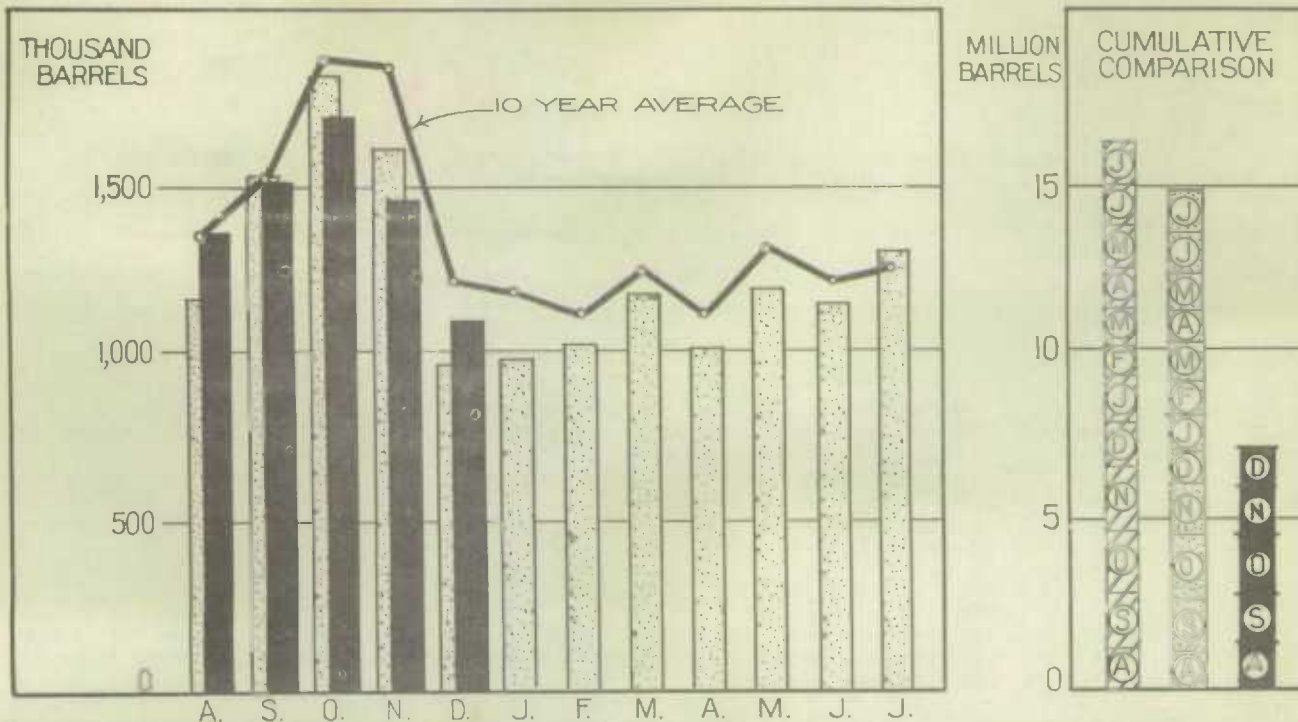
Months	Wheat Ground			Wheat Flour Production			Export
	Eastern Division	Western Division	Total Canada	Eastern Division	Western Division	Total Canada	Total Canada
		(Bushels)			(Barrels)		(Barrels)
January	2,400,039	2,060,238	4,460,277	535,589	446,399	981,988	314,311
February	2,335,200	2,279,369	4,614,569	520,666	498,351	1,019,017	340,102
March	2,613,048	2,709,107	5,322,155	583,577	588,164	1,171,741	476,773
April	2,270,499	2,311,943	4,582,442	502,141	507,323	1,009,464	281,162
May	2,695,332	2,778,201	5,473,533	592,190	604,149	1,196,339	448,653
June	2,503,207	2,778,449	5,281,656	547,773	601,037	1,148,810	430,171
July	2,866,997	3,072,554	5,939,551	634,901	665,766	1,300,667	444,905
August	2,892,691	3,333,728	6,226,419	638,830	723,849	1,362,679	387,728
September	2,818,060	4,048,746	6,866,806	623,345	892,778	1,516,123	378,318
October	3,369,844	4,311,264	7,681,108	746,304	954,963	1,701,267	464,013
November	2,800,879	3,793,327	6,594,206	620,826	838,562	1,459,388	408,653
December	2,708,737	2,212,590	4,921,327	601,303	489,089	1,090,392	475,282
TOTAL, 1936	32,274,533	35,689,516	67,964,049	7,147,445	7,810,430	14,957,875	4,850,071
TOTAL, 1935	30,758,096	33,213,784	63,971,880	6,900,667	7,312,441	14,213,108	4,881,057





1010633808

## WHEAT FLOUR PRODUCTION



## WHEAT FLOUR EXPORT

