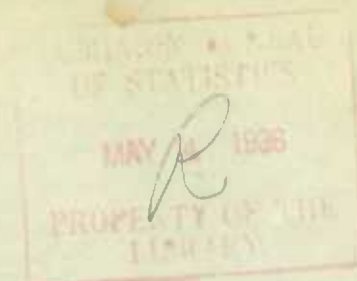


Published by Authority of the Hon. W. D. Euler, M.P.,
Minister of Trade and Commerce

DOMINION BUREAU OF STATISTICS - CANADA
AGRICULTURAL BRANCH



Dominion Statistician:
Chief, Agricultural Branch:

R. H. Coats, LL.D., F.R.S.C., F.S.S. (Hon.)
T. W. Grindley, Ph.D.

CANADIAN MILLING STATISTICS

March, 1936

Ottawa, Canada, May 1, 1936.- The Dominion Bureau of Statistics publishes, herewith, preliminary statistics of grains ground and products for March, 1936, with comparisons for the previous year, inventory for the month and wheat flour exports.

The daily capacity reporting for March, 1936 amounted to 92,904 barrels.

SUMMARY

During the month of March, 1936, 5,322,155 bushels of wheat were ground in Canadian mills compared with 4,675,022 bushels for the corresponding month of the previous year. With the exception of buckwheat, coarse grains were higher than for March, 1935.

Grains ground for the month of March, 1936 are shown in bushels with comparative figures for the same month of the previous year in brackets: Wheat 5,322,155 (4,675,022); Oats 906,013 (618,422); Corn 232,960 (166,872); Barley 83,649 (55,325); Buckwheat 1,911 (14,659); and Mixed Grain 1,666,692 (1,355,148).

Mill stocks of wheat on March 31, 1936 amounted to 9,174,405 bushels, while for the same month in 1935 the amount was 9,098,902 bushels.

Flour production in March, 1936 amounted to 1,171,741 barrels compared with 1,046,087 barrels for the same month last year. Exports of flour in March, 1936 amounted to 476,773 barrels compared with 497,468 barrels in March, 1935.

MILL GRINDINGS

The following table shows the amount of wheat, oats, corn, barley, buckwheat and mixed grain milled for the month of March, 1936, by merchant and custom mills in Canada according to divisions, with comparative totals for the same month last year and stocks on hand at March 31, 1936 (in bushels):-

Grain	Quantities Ground				Stocks on hand, March 31, 1936		
	Merchant Mills	Custom Mills	Total March, 1936	Total March, 1935	Merchant Mills	Custom Mills	Total March 31, 1936
<u>EASTERN DIVISION</u>							
Wheat	2,506,137	106,911	2,613,048	2,403,125	3,246,946	89,466	3,336,412
Oats	307,506	136,048	443,554	284,745	418,053	41,342	459,395
Corn	108,741	122,479	231,220	164,899	266,257	15,512	281,769
Barley	20,489	31,052	51,541	35,105	49,338	23,806	73,144
Buckwheat	-	1,911	1,911	14,659	1,263	3,638	4,901
Mixed Grain	32,547	1,570,590	1,603,137	1,304,690	3,859	12,814	16,673
<u>WESTERN DIVISION</u>							
Wheat	2,616,854	92,253	2,709,107	2,271,897	5,772,952	65,041	5,837,993
Oats	420,411	42,048	462,459	333,677	1,013,248	9,886	1,023,134
Corn	1,740	-	1,740	1,973	16,974	200	17,174
Barley	15,004	17,104	32,108	20,220	43,043	5,128	48,171
Buckwheat	-	-	-	-	-	-	-
Mixed Grain	-	63,555	63,555	50,458	-	1,200	1,200
<u>DOMINION OF CANADA</u>							
Wheat	5,122,991	199,164	5,322,155	4,675,022	9,019,898	154,507	9,174,405
Oats	727,917	178,096	906,013	618,422	1,431,301	51,228	1,482,529
Corn	110,481	122,479	232,960	166,872	283,231	15,712	298,943
Barley	35,493	48,156	83,649	55,325	92,381	28,934	121,315
Buckwheat	-	1,911	1,911	14,659	1,263	3,638	4,901
Mixed Grain	32,547	1,634,145	1,666,692	1,355,148	3,859	14,014	17,873

MILLINGS

The following table shows the production from wheat and coarse grains ground in merchant and custom mills in Canada for the month of March, 1936, according to divisions, with comparative totals for the same month last year and stocks on hand at March 31, 1936:-

Products	Unit of Measure	Production from Grindings			Total March, 1936	Total March, 1935	Stocks
		Eastern Division	Western Division	on hand March 31, 1936			
<u>Wheat Flour</u>							
Manitoba Sp. P. No. 1	Barrels	224,969	158,401	383,370	340,236	294,313	
Manitoba Sp. P. No. 2	"	176,109	183,937	360,046	346,129	207,738	
Ontario Winter Straight	"	56,010	-	56,010	40,219	22,371	
All other	"	103,758	221,805	325,563	270,230	534,543	
Total Flour	"	560,846	564,143	1,124,989	996,814	1,058,965	
<u>Sundry Cereals</u>							
Low Grade or Feed Flour	Barrels	22,731	24,021	46,752	49,273	33,480	
Bran	Tons	9,539	9,268	18,807	17,073	5,308	
Shorts	"	8,250	10,086	18,336	14,765	7,928	
Middlings	"	2,783	2,528	5,311	3,862	6,227	
/ All Other Offal	"	3,341	2,615	5,956	4,320	2,249	
Oatmeal	Pounds	383,964	285,360	669,324	533,056	599,379	
Rolled Oats	"	4,444,740	5,966,750	10,411,490	6,424,542	5,656,682	
Corn Flour and Meal	"	2,304,980	-	2,304,980	1,560,504	586,325	
Barley, Pot and Pearl	"	109,204	135,044	244,248	170,270	134,096	
Buckwheat Flour	"	31,298	-	31,298	240,660	-	
<u>Ground Feed</u>							
Ground Oats	Pounds	5,432,185	2,675,955	8,107,540	7,093,265	943,648	
Cracked Corn	"	6,213,807	97,468	6,311,275	5,310,285	446,935	
Ground Barley	"	2,283,909	1,255,084	3,538,993	2,219,045	414,873	
Mixed Grain	"	71,744,999	2,797,320	74,542,319	60,909,937	199,897	

/ Including Coarse Grain Offal.

Flour production amounting to 1,171,741 barrels, for the month of March, 1936 was well up to average, exceeding the output for the same month in 1935 when 1,046,087 barrels were produced. Wheat offal was well maintained with bran 18,807 (17,073) tons, shorts 18,336 (14,765) tons, and middlings 5,311 (3,862) tons.

Cereal production increased over last year except in the case of buckwheat flour which indicated a decided falling off in production. The production for cereals was as follows with figures for the same month last year in brackets and the quantities in pounds: Oatmeal, 669,324 (532,056); Rolled Oats, 10,411,490 (6,424,542); Corn Flour and Meal, 2,304,980 (1,560,504); Pot and Pearl Barley, 244,248 (170,270); and Buckwheat Flour, 31,298 (240,660).

Animal feed products increased as follows: Ground Oats, 8,107,540 (7,093,265) pounds; Cracked Corn, 6,311,275 (5,310,285) pounds; Ground Barley, 3,538,993 (2,219,045) pounds; and Mixed Grain 74,542,319 (60,909,937) pounds.

Total flour stocks for the month of March, 1936 amounted to 1,092,445 barrels compared with 1,167,386 barrels for the same month last year and 1,066,783 barrels for the previous month.

SUMMARY OF MILL GRINDINGS

The following table summarizes the mill grind of wheat, oats, corn, barley and mixed grain for the first eight months of the crop year 1935-36, with comparative figures for 1934-35:-

Months	Wheat	Oats	Corn (Bushels)	Barley	Mixed Grain
August, 1935	5,230,795	733,282	229,976	59,523	913,719
September	6,932,568	1,151,068	218,914	68,880	1,134,815
October	8,261,087	1,543,665	218,229	99,278	1,627,948
November	7,262,558	1,513,259	166,813	128,150	1,778,718
December	4,358,625	1,026,706	174,963	98,350	1,969,230
January, 1936	4,460,277	924,352	175,800	104,313	1,837,890
February	4,614,569	933,981	214,960	87,505	1,668,912
March	5,322,155	906,013	232,960	83,649	1,666,692
T O T A L	46,442,634	8,732,326	1,632,615	729,648	12,597,924
TOTAL LAST YEAR	44,918,027	7,094,277	1,266,109	523,421	10,995,036

SUMMARY OF MILL PRODUCTION

The following table summarizes the production of wheat flour, oatmeal, rolled oats and corn flour and meal for the first eight months of the crop year 1935-36, including percentage of operation and wheat flour exports, with comparative figures for 1934-35:-

Months	Wheat Flour		Oatmeal	Rollled Oats	Corn Flour and Meal	Wheat Flour Exported
	Percentage of operation	Quantity Barrels	Pounds	Pounds	Pounds	Barrels
August, 1935	48.9	1,161,389	493,528	7,977,920	2,321,082	376,562
September	68.3	1,535,189	902,388	13,911,445	2,312,180	395,640
October	75.0	1,824,754	1,700,720	19,488,481	2,842,570	501,442
November	68.3	1,603,803	1,549,038	17,448,402	1,944,746	525,368
December	41.6	957,219	692,986	11,375,644	1,543,590	443,828
January, 1936	40.8	981,988	652,865	9,098,636	1,772,118	314,311
February	44.5	1,019,017	495,282	10,642,544	1,607,494	340,102
March	49.6	1,171,741	669,324	10,411,490	2,304,980	476,773
T O T A L		10,255,100	7,156,131	100,354,562	16,648,760	3,374,026
TOTAL LAST YEAR		10,005,383	5,598,267	86,341,307	12,389,296	3,265,389

The following table shows the production of mixed grain feed for the calendar years 1930 - 1935:

Months	1930	1931	1932	1933	1934	*1935
	(Pounds)					
January	58,175,936	82,931,918	79,900,991	69,927,317	59,059,082	67,978,754
February	51,417,206	76,763,017	75,604,830	61,880,472	54,323,344	63,144,493
March	54,390,293	77,961,857	77,276,545	66,094,109	56,402,138	64,289,632
April	44,985,561	70,003,841	65,339,521	57,966,341	46,798,899	61,904,803
May	31,284,910	50,782,858	47,205,512	43,379,872	33,266,941	49,511,622
June	22,681,671	39,235,911	34,394,075	29,732,188	23,964,527	35,098,461
July	20,865,670	38,795,013	31,636,332	25,620,167	21,287,295	30,740,782
August	29,770,358	46,046,284	39,240,440	37,530,786	33,150,561	40,771,449
September	47,120,757	56,520,059	55,642,854	50,935,256	46,936,030	50,683,356
October	75,797,848	78,344,899	69,346,574	61,727,024	59,338,377	72,391,907
November	83,384,163	83,919,911	87,604,619	71,626,598	69,969,546	79,374,452
December	85,088,077	90,024,311	80,422,034	62,712,646	72,700,946	87,767,412
T O T A L	604,962,450	791,329,815	743,614,327	639,132,776	577,189,686	703,637,617

x Preliminary from August to December, 1935.



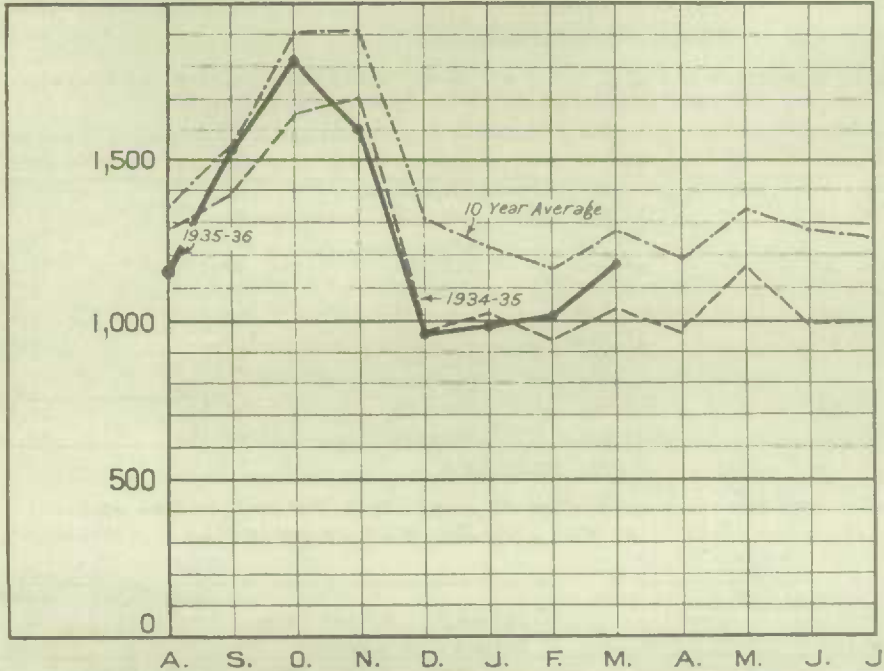
1010633799

4

WHEAT FLOUR PRODUCTION

THOUSAND
BARRELS

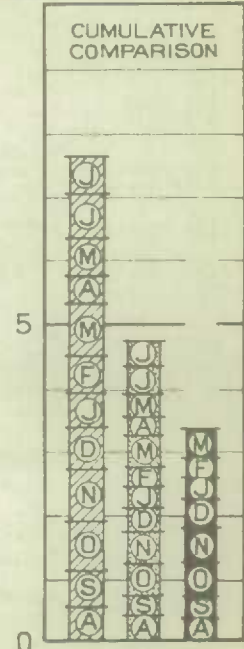
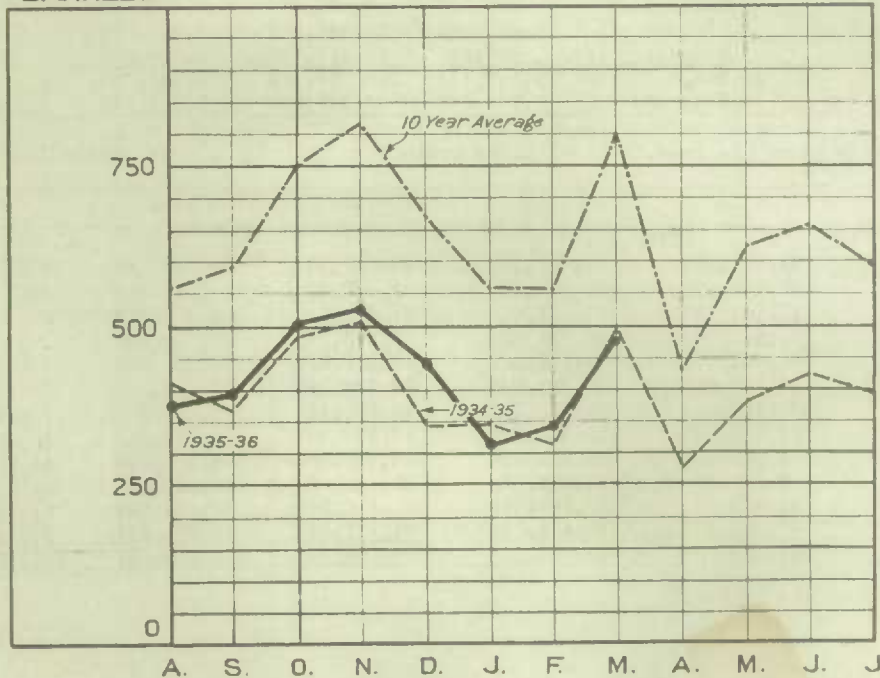
MILLION
BARRELS



WHEAT FLOUR EXPORT

THOUSAND
BARRELS

MILLION
BARRELS



----- 10 YEAR AVERAGE 1925-26 TO 1934-35
 - - - - - 1934-1935
 —●— 1935-1936

