

Published by Authority of the HON. W. D. Euler, M. P.,  
Minister of Trade and Commerce

DOMINION BUREAU OF STATISTICS - CANADA  
AGRICULTURAL BRANCH

Dominion Statistician:  
Chief, Agricultural Branch:

R. H. Coats, LL.D., F.R.S.C., F.S.S.(Hon.)  
T. W. Grindley, Ph.D.

CANADIAN MILLING STATISTICS

April, 1936.

Ottawa, Canada, June 4, 1936. - The Dominion Bureau of Statistics publishes, herewith, preliminary statistics of grains ground and products for April, 1936, with comparisons for the previous year, inventory for the month and wheat flour exports.

The daily capacity reporting for April, 1936 amounted to 92,557 barrels.

SUMMARY

During the month of April, 1936, 4,582,442 bushels of wheat were ground in Canadian mills compared with 4,313,600 bushels for the corresponding month of the previous year. Coarse grains were higher than for April, 1935.

Grains ground for the month of April, 1936 are shown in bushels with comparative figures for the same month of the previous year in brackets: Wheat, 4,582,442 (4,313,600); Oats, 694,603 (621,952); Corn, 248,909 (148,932); Barley 84,408 (57,588); Buckwheat, 8,236 (7,386); and Mixed Grain, 1,625,671 (1,401,247).

Mill stocks of wheat on April 30, 1936 amounted to 8,352,836 bushels, while for the same month in 1935 the amount was 9,124,152 bushels.

Flour production in April, 1936 amounted to 1,009,464 barrels compared with 965,765 barrels for the same month last year. Exports of flour in April, 1936 amounted to 281,162 barrels compared with 276,907 barrels in April 1935.

MILL GRINDINGS

The following table shows the amount of wheat, oats, corn, barley, buckwheat and mixed grain milled for the month of April, 1936, by merchant and custom mills in Canada according to divisions, with comparative totals for the same month last year and stocks on hand at April 30, 1936 (in bushels):-

Grain	Quantities Ground				Stocks on hand, April 30, 1936		
	Merchant Mills	Custom Mills	Total April, 1936	Total April, 1935	Merchant Mills	Custom Mills	Total April 30, 1936
<u>EASTERN DIVISION</u>							
Wheat	2,141,265	129,234	2,270,499	2,203,926	2,591,581	82,352	2,673,933
Oats	221,633	141,160	362,793	291,940	475,106	46,450	521,556
Corn	97,434	149,198	246,632	146,784	224,861	12,855	237,716
Barley	22,082	37,249	59,331	33,748	32,242	18,705	50,947
Buckwheat	-	8,236	8,236	7,386	937	5,955	6,892
Mixed Grain	29,676	1,548,457	1,578,133	1,340,519	4,038	18,175	22,213
<u>WESTERN DIVISION</u>							
Wheat	2,260,038	51,905	2,311,943	2,109,674	5,617,994	60,909	5,678,903
Oats	294,792	37,018	331,810	330,012	946,438	9,129	955,567
Corn	2,227	50	2,277	2,148	10,030	800	10,830
Barley	13,817	11,260	25,077	23,840	37,411	4,247	41,658
Buckwheat	-	-	-	-	-	-	-
Mixed Grain	18	47,520	47,538	60,728	543	863	1,406
<u>DOMINION OF CANADA</u>							
Wheat	4,401,303	181,139	4,582,442	4,313,600	8,209,575	143,261	8,352,836
Oats	516,425	178,178	694,603	621,952	1,421,544	55,579	1,477,123
Corn	99,661	149,248	248,909	148,932	234,891	13,655	248,546
Barley	35,899	48,509	84,408	57,588	69,653	22,952	92,605
Buckwheat	-	8,236	8,236	7,386	937	5,955	6,892
Mixed Grain	29,694	1,595,977	1,625,671	1,401,247	4,581	19,038	23,619

MILLINGS

The following table shows the production from wheat and coarse grains ground in merchant and custom mills in Canada for the month of April, 1936, according to divisions, with comparative totals for the same month last year and stocks on hand at April 30, 1936:-

Products	Unit of Measure	Production from Grindings			Total April, 1935	Stocks on hand April 30, 1936
		Eastern Division	Western Division	Total April, 1936		
<u>Wheat Flour</u>						
Manitoba Sp. P. No. 1	Barrels	191,778	131,092	322,870	295,912	284,572
Manitoba Sp. P. No. 2	"	142,184	158,212	300,396	339,910	200,608
Ontario Winter Straight	"	60,009	-	60,009	37,215	23,607
All other	"	91,394	196,797	288,191	253,935	535,291
Total Flour	"	485,365	486,101	971,466	926,972	1,044,078
<u>Sundry Cereals</u>						
Low Grade or Feed Flour	Barrels	16,776	21,222	37,998	38,793	37,794
Bran	Tons	8,555	7,856	16,411	15,871	4,196
Shorts	"	6,906	9,102	16,008	13,712	7,487
Middlings	"	2,447	2,148	4,595	3,284	5,215
All Other Offal	"	3,737	1,782	5,519	4,335	1,971
Oatmeal	Pounds	254,016	195,301	449,317	531,438	486,524
Rolled Oats	"	3,032,820	4,153,702	7,186,522	6,513,572	4,895,824
Corn Flour and Meal	"	2,119,274	-	2,119,274	1,448,836	591,485
Barley, Pot and Pearl	"	124,641	68,992	193,633	110,691	152,242
Buckwheat Flour	"	134,634	-	134,634	120,370	490
<u>Ground Feed</u>						
Ground Oats	Pounds	5,609,986	2,404,149	8,014,135	7,282,695	1,155,875
Cracked Corn	"	6,878,306	127,556	7,005,862	4,143,717	462,798
Ground Barley	"	2,213,012	1,031,708	3,244,720	2,550,383	520,520
Mixed Grain	"	70,782,707	2,100,089	72,882,796	62,489,151	86,424

/ Including Coarse Grain Offal.

Flour production for the month of April, 1936 amounted to 1,009,464 barrels compared with 965,765 barrels for the same month last year. Wheat offal was higher with bran 16,411 (15,871) tons, shorts 16,008 (13,712) tons, and middlings 4,595 (3,284) tons.

Cereal production for April, 1936 was as follows with figures for the same month last year in brackets and the quantities in pounds: Oatmeal, 449,317 (531,438); Rolled Oats, 7,186,522 (6,513,572); Corn Flour and Meal, 2,119,274 (1,448,836); Pot and Pearl Barley, 193,633 (110,691); and Buckwheat Flour, 134,634 (120,370).

Animal feed products compared as follows: Ground Oats, 8,014,135 (7,282,695) pounds; Cracked Corn, 7,005,862 (4,143,717) pounds; Ground Barley, 3,244,720 (2,550,383) pounds; and Mixed Grain, 72,882,796 (62,489,151).

Total flour stocks for the month of April, 1936 amounted to 1,081,872 barrels compared with 1,164,874 barrels for the same month last year and 1,092,445 barrels for the previous month.

SUMMARY OF MILL GRINDINGS

The following table summarizes the mill grind of wheat, oats, corn, barley and mixed grain for nine months of the crop year 1935-36, with comparative figures for 1934-35:-

Months	Wheat	Oats	Corn	Barley	Mixed Grain
		(Bushels)			
August, 1935	5,230,795	733,282	229,976	59,523	913,719
September	6,932,568	1,151,068	218,914	68,880	1,134,815
October	8,261,087	1,543,665	218,229	99,278	1,627,948
November	7,262,558	1,513,259	166,813	128,150	1,778,718
December	4,358,625	1,026,706	174,963	98,350	1,969,230
January, 1936	4,460,277	924,352	175,800	104,313	1,837,890
February	4,614,569	933,981	214,960	87,505	1,668,912
March	5,322,155	906,013	232,960	83,649	1,666,692
April	4,582,442	694,603	248,909	84,408	1,625,671
T O T A L	51,025,076	9,426,929	1,881,524	814,056	14,223,595
TOTAL LAST YEAR	49,231,627	7,716,229	1,415,041	581,009	12,396,283

SUMMARY OF MILL PRODUCTION

The following table summarizes the production of wheat flour, oatmeal, rolled oats and corn flour and meal for nine months of the crop year 1935-36, including percentage of operation and wheat flour exports, with comparative figures for 1934-35:-

Months	Wheat Flour		Oatmeal	Rolled Oats	Corn Flour and Meal	Wheat Flour Exported
	Percentage of operation	Quantity Barrels	Pounds	Pounds	Pounds	Barrels
August, 1935	48.9	1,161,389	493,528	7,977,920	2,321,082	376,562
September	68.3	1,535,189	902,388	13,911,445	2,312,180	395,640
October	75.0	1,824,754	1,700,720	19,488,481	2,842,570	501,442
November	68.3	1,603,803	1,549,038	17,448,402	1,944,746	525,368
December	41.6	957,219	692,986	11,375,644	1,543,590	443,828
January, 1936	40.8	981,988	652,865	9,098,636	1,772,118	314,311
February	44.5	1,019,017	495,282	10,642,544	1,607,494	340,102
March	49.6	1,171,741	669,324	10,411,490	2,304,980	476,773
April	44.7	1,009,464	449,317	7,186,522	2,119,274	281,162
T O T A L		11,264,564	7,605,448	107,541,084	18,768,034	3,655,188
TOTAL LAST YEAR		10,971,148	6,129,705	92,854,879	13,838,132	3,542,296

The following table shows the manufacture of barley, pot and pearl, and meal for the calendar years 1929 - 1934:-

Months	1929	1930	1931	1932	1933	1934
				( Pounds )		
January	301,658	257,955	394,412	300,112	228,858	288,703
February	351,351	323,569	331,940	281,801	251,615	363,630
March	283,650	321,730	395,710	401,274	332,808	141,738
April	302,263	214,941	275,029	244,311	242,228	91,728
May	224,643	184,048	158,479	125,467	191,100	104,860
June	181,187	185,580	234,397	86,182	126,028	40,084
July	265,842	230,550	135,316	133,460	54,537	145,129
August	357,621	258,673	333,416	350,896	119,920	150,381
September	329,246	458,572	287,838	329,123	229,744	206,306
October	420,680	598,443	479,055	404,710	371,841	282,420
November	558,891	450,959	459,768	451,146	328,831	247,165
December	424,623	357,359	325,012	254,357	189,123	140,994
T O T A L	4,001,655	3,842,379	3,810,372	3,362,839	2,666,633	2,203,138





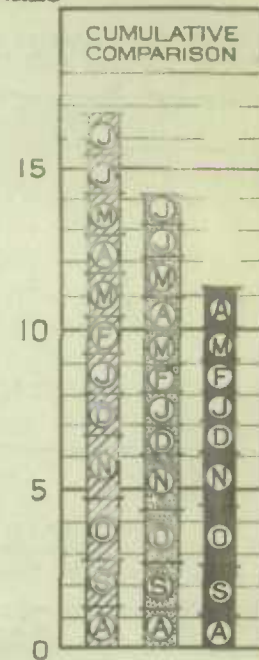
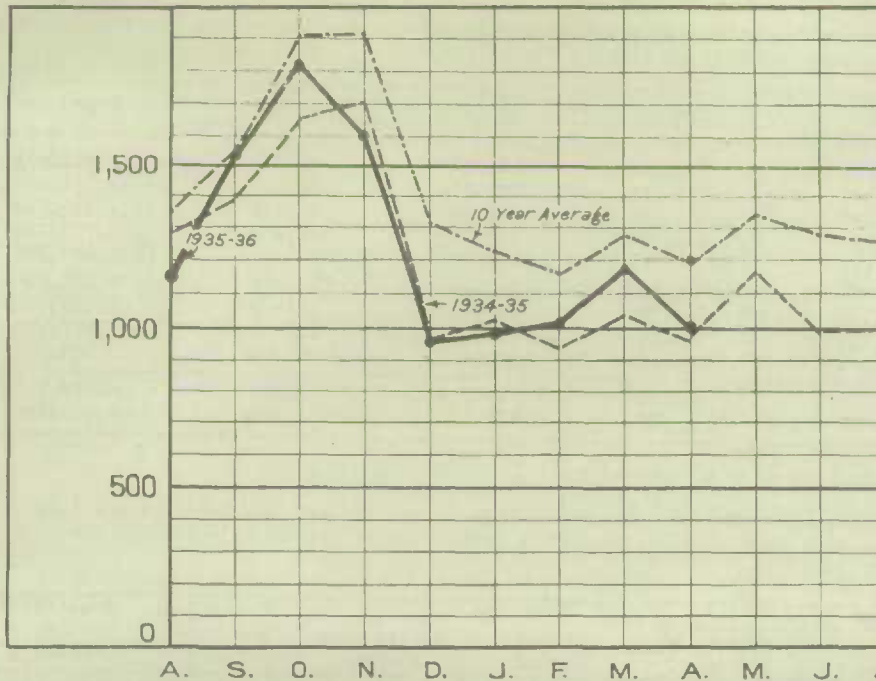
1010633800

4

## WHEAT FLOUR PRODUCTION

THOUSAND  
BARRELS

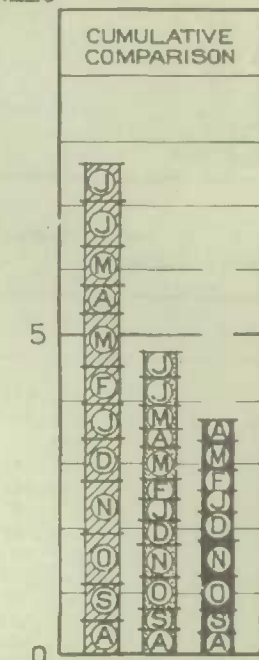
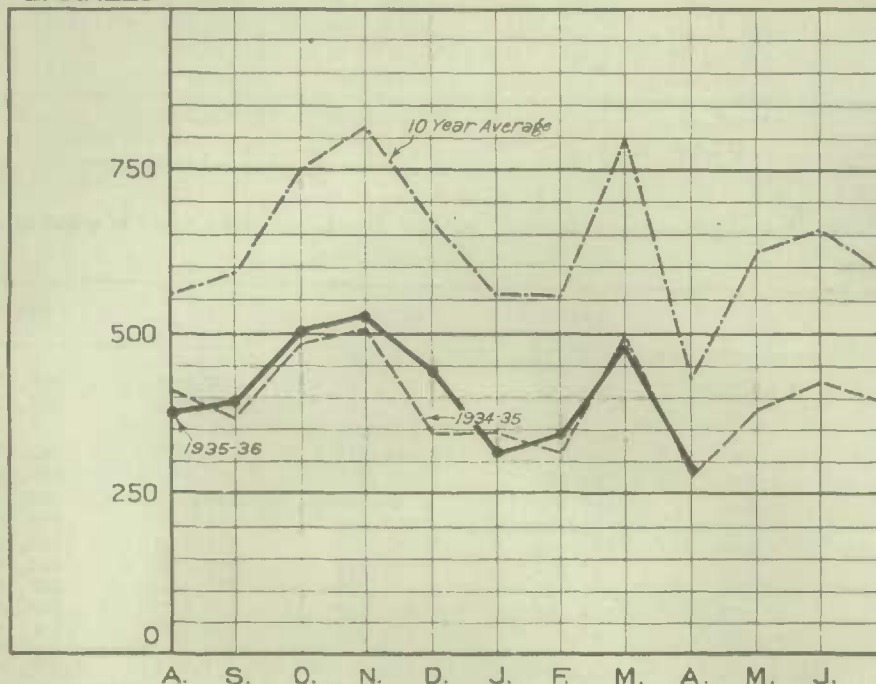
MILLION  
BARRELS



## WHEAT FLOUR EXPORT

THOUSAND  
BARRELS

MILLION  
BARRELS



----- 10 YEAR AVERAGE 1925-26 TO 1934-35  
 - - - - - 1934-1935  
 ———— 1935-1936

