

Published by Authority of the HON. W. D. EULER, M.P.,
Minister of Trade and Commerce

DOMINION BUREAU OF STATISTICS - CANADA
AGRICULTURAL BRANCH

Dominion Statistician:
Chief, Agricultural Branch:

R. H. Coats, LL.D., F.R.S.C., F.S.S. (Hon.)
T. W. Grindley, Ph.D.

CANADIAN MILLING STATISTICS

November, 1937.

Ottawa, Canada, January 6, 1938.- The Dominion Bureau of Statistics publishes, herewith, preliminary statistics of grains ground and products for November, 1937, with comparisons for the previous year, inventory for the month and wheat flour exports.

The daily capacity reporting for November, 1937 amounted to 95,294 barrels.

SUMMARY

During the month of November, 1937, 6,473,672 bushels of wheat were ground in Canadian mills compared with 6,594,206 bushels for the corresponding month of the previous year. Coarse grains, with the exception of buckwheat were higher than for November, 1936.

Grains ground for the month of November, 1937 are shown in bushels with comparative figures for the same month of the previous year in brackets: Wheat 6,473,672 (6,594,206); Oats 1,522,321 (1,241,218); Corn 247,907 (247,246); Barley 139,232 (120,751); Buckwheat 23,353 (28,912); and Mixed Grain 1,711,986 (1,691,600).

Mill stocks of wheat on November 30, 1937 amounted to 5,979,935 bushels, while for the same month in 1936 the amount was 10,258,857 bushels.

Flour production in November, 1937 amounted to 1,449,419 barrels compared with 1,459,388 barrels for the same month last year. Exports of flour in November, 1937 amounted to 405,921 barrels compared with 408,653 barrels in November, 1936.

MILL GRINDINGS

The following table shows the amount of wheat, oats, corn, barley, buckwheat and mixed grain milled for the month of November, 1937, by merchant and custom mills in Canada according to divisions, with comparative totals for the same month last year and stocks on hand at November 30, 1937 (in bushels):-

Grain	Quantities Ground				Stocks on hand, November 30, 1937		
	Merchant Mills	Custom Mills	Total November, 1937	Total November, 1936	Merchant Mills	Custom Mills	Total November 30, 1937
<u>EASTERN DIVISION</u>							
Wheat	2,747,563	152,036	2,899,599	2,800,879	2,880,732	115,619	2,996,351
Oats	687,967	170,623	858,590	670,346	427,488	44,288	471,776
Corn	117,306	127,110	244,416	244,698	425,598	69,200	494,798
Barley	44,154	31,697	75,851	54,782	85,890	31,480	117,370
Buckwheat	-	23,353	23,353	28,912	11,094	10,045	21,139
Mixed Grain	43,627	1,569,159	1,612,786	1,600,351	2,260	10,289	12,549
<u>WESTERN DIVISION</u>							
Wheat	3,391,232	182,841	3,574,073	3,793,327	2,778,553	205,031	2,983,584
Oats	563,675	100,056	663,731	570,872	611,832	11,795	623,627
Corn	2,752	739	3,491	2,548	17,188	203	17,391
Barley	21,038	42,343	63,381	65,969	29,611	18,089	47,700
Buckwheat	-	-	-	-	-	-	-
Mixed Grain	18	99,182	99,200	91,249	-	879	979
<u>DOMINION OF CANADA</u>							
Wheat	6,138,795	334,877	6,473,672	6,594,206	5,659,285	320,650	5,979,935
Oats	1,251,642	270,679	1,522,321	1,241,218	1,039,320	56,083	1,095,403
Corn	120,058	127,849	247,907	247,246	442,786	69,403	512,189
Barley	65,192	74,040	139,232	120,751	115,501	49,569	165,070
Buckwheat	-	23,353	23,353	28,912	11,094	10,045	21,139
Mixed Grain	43,645	1,668,341	1,711,986	1,691,600	2,260	11,168	13,428

MILLINGS

The following table shows the production from wheat and coarse grains ground in merchant and custom mills in Canada for the month of November, 1937, according to divisions, with comparative totals for the same month last year and stocks on hand at November 30, 1937:-

Products	Unit of Measure	Production from Grindings				Stocks on hand November 30, 1937
		Eastern Division	Western Division	Total November, 1937	Total November, 1936	
<u>Wheat Flour</u>						
Manitoba Sp. P. No. 1	Barrels	223,945	224,059	448,004	470,001	322,309
Manitoba Sp. P. No. 2	"	203,277	236,539	439,816	435,037	207,188
Ontario Winter Straight	"	74,643	-	74,643	48,768	24,860
All Other	"	132,661	306,828	439,489	452,720	627,370
Total Flour	"	634,526	767,426	1,401,952	1,406,526	1,181,727
<u>Sundry Cereals</u>						
Low Grade or Feed Flour	Barrels	20,606	26,861	47,467	52,862	18,189
Bran	Tons	9,540	9,504	19,044	22,207	3,528
Shorts	"	9,416	13,369	22,785	26,411	4,064
Middlings	"	3,299	3,490	6,789	6,750	3,941
All Other Offal*	"	4,587	3,753	8,340	7,171	3,225
Oatmeal	Pounds	446,880	592,694	1,039,574	882,480	934,509
Rolled Oats	"	9,420,660	8,031,246	17,451,906	13,989,015	6,364,202
Corn Flour and Meal	"	2,292,148	-	2,292,148	2,230,422	335,842
Barley, Pot and Pearl	"	308,798	215,061	523,859	301,707	242,938
Buckwheat Flour	"	380,122	-	380,122	475,380	16,550
<u>Ground Feed</u>						
Ground Oats	Pounds	7,258,531	4,728,896	11,987,427	8,879,405	969,318
Cracked Corn	"	8,520,000	195,552	8,715,552	8,415,937	640,811
Ground Barley	"	2,936,274	2,604,321	5,540,595	4,857,629	606,353
Mixed Grain	"	72,269,560	4,419,583	76,689,143	75,384,533	86,886

* Including Coarse Grain Offal

Flour production for the month of November, 1937 amounted to 1,449,419 barrels compared with 1,459,388 barrels in the same month a year ago. Bran and shorts were down in volume too, but middlings were slightly higher, with bran 19,044 (22,207) tons, shorts 22,785 (26,411) tons and middlings 6,789 (6,750) tons.

Cereal production showed improvement over November of last year in all items except buckwheat flour. The production for 1937 was as follows with the figures for the same month last year in brackets and the quantities in pounds: Oatmeal, 1,039,574 (882,480); Rolled Oats, 17,451,906 (13,989,015); Corn Flour and Meal, 2,292,148 (2,230,422); Pot and Pearl Barley, 523,859 (301,707) and Buckwheat Flour, 380,122 (475,380).

Animal feed products were higher and compared as follows: Ground Oats, 11,987,427 (8,879,405) pounds; Cracked Corn, 8,715,552 (8,415,937) pounds; Ground Barley, 5,540,595 (4,857,629) pounds; and Mixed Grain, 76,689,143 (75,384,533) pounds.

Total flour stocks for the month of November, 1937 amounted to 1,199,916 barrels compared with 1,199,318 barrels for the same month last year and 1,203,984 barrels for the previous month.

SUMMARY OF MILL GRINDINGS

The following table summarizes the mill grind of wheat, oats, corn, barley and mixed grain for the first four months of the crop year 1937-38, with comparative figures for 1936-37:-

Months	Wheat	Oats	Corn	Barley	Mixed Grain
			(Bushels)		
August, 1937	4,712,746	837,433	231,643	85,601	714,113
September	6,418,235	1,128,172	219,842	130,936	1,241,096
October	6,626,888	1,291,496	306,272	135,337	1,460,519
November	6,473,672	1,522,321	247,907	139,232	1,711,986
TOTAL	24,231,541	4,779,422	1,005,664	491,106	5,127,714
TOTAL LAST YEAR	27,368,539	4,760,053	1,133,351	437,410	5,535,541

SUMMARY OF MILL PRODUCTION

The following table summarizes the production of wheat flour, oatmeal, rolled oats and corn flour and meal for the first four months of the crop year 1937-38, including percentage of operation and wheat flour exports, with comparative figures for 1936-37:-

Months	Wheat Flour		Oatmeal	Rolled Oats	Corn Flour and Meal	Wheat Flour Exported
	Percentage of Operation	Quantity Barrels	Pounds	Pounds	Pounds	Barrels
August, 1937	44.0	1,042,949	473,546	10,219,290	1,993,480	288,608
September	61.5	1,437,586	838,850	13,546,438	2,128,854	306,655
October	63.9	1,489,185	688,108	15,747,667	2,476,304	336,478
November	62.2	1,449,419	1,039,574	17,451,906	2,292,148	405,921
TOTAL		5,419,139	3,040,078	56,965,301	8,890,786	1,337,662
TOTAL LAST YEAR		6,039,457	2,940,875	56,790,911	10,990,792	1,638,712

The following table shows the manufacture of rolled oats in Canada for the calendar years 1931 to 1936:-

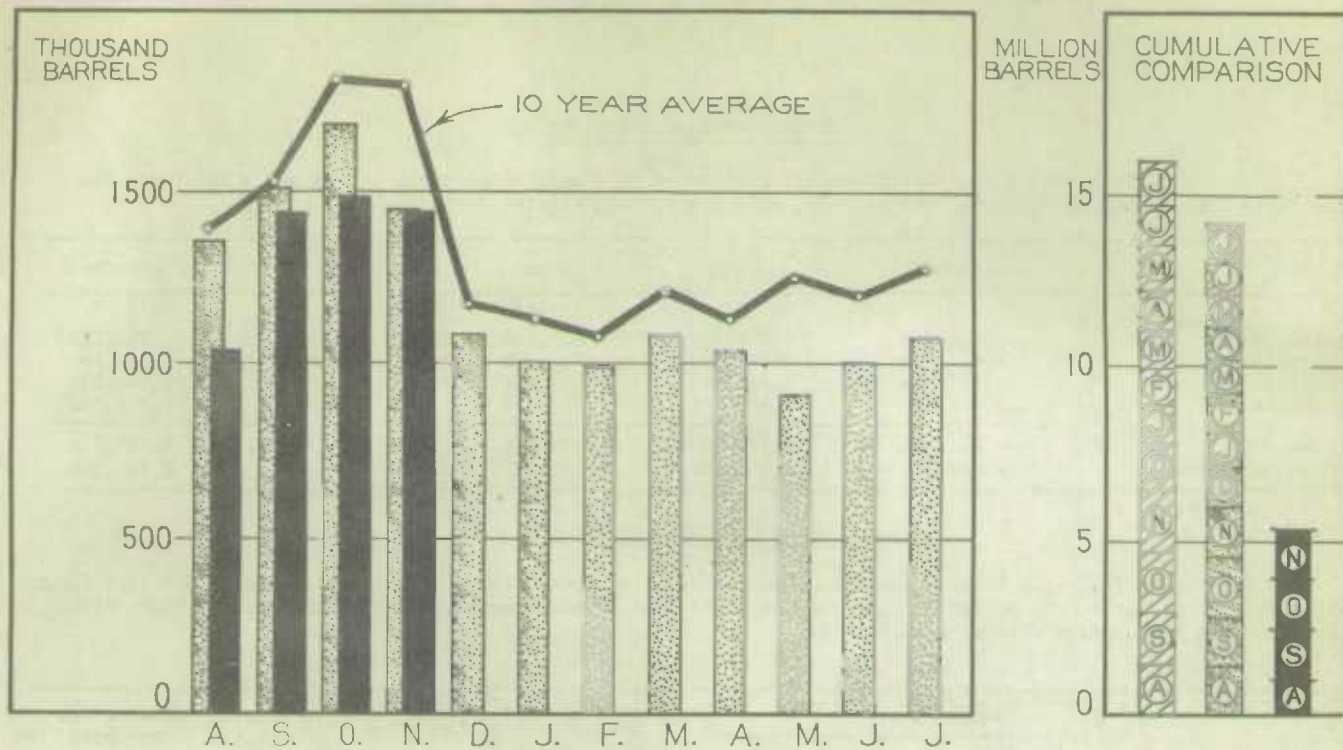
Months	1931	1932	1933	1934	1935	1936*
				(Pounds)		
January	10,905,497	9,566,907	9,015,444	10,261,459	8,379,451	9,098,636
February	10,399,104	9,216,882	7,613,656	9,338,950	8,739,753	10,642,544
March	8,693,573	8,408,031	8,588,777	7,866,835	6,424,542	10,411,490
April	6,941,276	6,619,264	5,585,475	6,397,869	6,513,572	7,186,522
May	7,724,670	6,315,048	6,464,036	6,132,154	7,538,950	8,451,646
June	9,567,277	8,002,390	7,634,723	9,556,820	9,223,425	10,342,912
July	12,201,352	8,940,843	10,030,017	10,292,971	7,650,617	11,614,639
August	9,703,392	12,301,642	11,258,685	10,644,925	7,977,920	13,725,254
September	14,549,397	14,124,180	12,093,243	13,521,725	13,911,445	13,431,935
October	17,603,960	16,765,969	15,676,287	16,697,250	19,488,481	15,644,707
November	20,796,084	17,871,610	16,416,025	14,345,997	17,448,402	13,989,015
December	11,513,316	10,532,277	7,468,493	7,587,664	11,375,644	12,808,934
T O T A L	140,598,898	128,665,043	117,844,461	122,644,619	124,672,202	137,348,234

* Preliminary figures from August to December 1936.

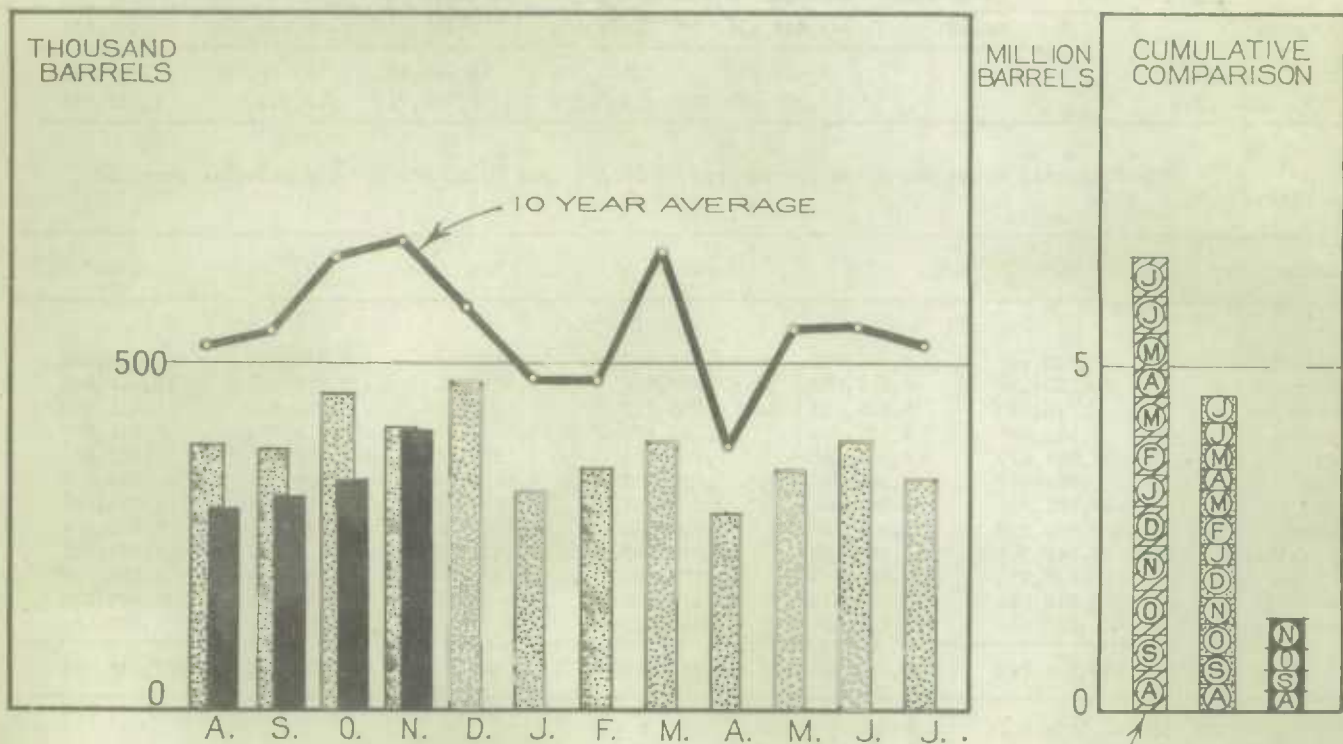


1010633795

WHEAT FLOUR PRODUCTION



WHEAT FLOUR EXPORT



LEGEND

