

Published by Authority of the Hon. W. D. Euler, M.P.,  
Minister of Trade and Commerce

DOMINION BUREAU OF STATISTICS - CANADA  
AGRICULTURAL BRANCH

Dominion Statistician:  
Chief, Agricultural Branch;

R. H. Coats, LL.D., F.R.S.C., F.S.S.(Hon.)  
T. W. Grindley, Ph.D.

CANADIAN MILLING STATISTICS

February, 1937.

Ottawa, Canada, April 1, 1937. - The Dominion Bureau of Statistics publishes, herewith, preliminary statistics of grains ground and products for February, 1937, with comparisons for the previous year, inventory for the month and wheat flour exports.

The daily capacity reporting for February, 1937 amounted to 95,884 barrels.

SUMMARY

During the month of February, 1937, 4,515,114 bushels of wheat were ground in Canadian mills compared with 4,614,569 bushels for the corresponding month of the previous year. In the coarse grain group, oats, barley and mixed grain were lower than for February, 1936.

Grains ground for the month of February, 1937 are shown in bushels with comparative figures for the same month of the previous year in brackets; Wheat 4,515,114 (4,614,569); Oats 800,126 (933,981); Corn 245,463 (214,960); Barley 71,114 (87,505); Buckwheat 8,100 (7,186); and Mixed Grain 1,329,683 (1,668,912).

Mill stocks of wheat on February 28, 1937 amounted to 7,973,911 bushels, while for the same month in 1936 the amount was 8,102,862 bushels.

Flour production in February, 1937 amounted to 999,694 barrels compared with 1,019,017 barrels for the same month last year. Exports of flour in February, 1937 amounted to 347,884 barrels compared with 340,102 barrels in February, 1936.

MILL GRINDINGS

The following table shows the amount of wheat, oats, corn, barley, buckwheat and mixed grain milled for the month of February, 1937, by merchant and custom mills in Canada according to divisions, with comparative totals for the same month last year and stocks on hand at February 28, 1937 (in bushels):-

| Grain                     | Quantities Ground |              |                      |                      | Stocks on hand, February 28, 1937 |              |                         |
|---------------------------|-------------------|--------------|----------------------|----------------------|-----------------------------------|--------------|-------------------------|
|                           | Merchant Mills    | Custom Mills | Total February, 1937 | Total February, 1936 | Merchant Mills                    | Custom Mills | Total February 28, 1937 |
| <u>EASTERN DIVISION</u>   |                   |              |                      |                      |                                   |              |                         |
| Wheat                     | 2,122,953         | 103,975      | 2,226,928            | 2,335,200            | 3,399,542                         | 84,370       | 3,483,912               |
| Oats                      | 268,995           | 118,846      | 387,841              | 604,926              | 512,576                           | 38,189       | 550,765                 |
| Corn                      | 102,952           | 140,321      | 243,273              | 213,705              | 251,766                           | 120,684      | 372,450                 |
| Barley                    | 15,707            | 20,008       | 35,715               | 54,301               | 37,091                            | 4,478        | 41,569                  |
| Buckwheat                 | -                 | 8,100        | 8,100                | 7,186                | 1,142                             | 3,430        | 4,572                   |
| Mixed Grain               | 38,772            | 1,222,305    | 1,261,077            | 1,606,671            | 1,500                             | 9,938        | 11,438                  |
| <u>WESTERN DIVISION</u>   |                   |              |                      |                      |                                   |              |                         |
| Wheat                     | 2,205,669         | 82,517       | 2,288,186            | 2,279,369            | 4,372,122                         | 117,877      | 4,489,999               |
| Oats                      | 346,128           | 66,157       | 412,285              | 329,055              | 1,193,797                         | 5,388        | 1,199,185               |
| Corn                      | 2,190             | -            | 2,190                | 1,255                | 18,681                            | 200          | 18,881                  |
| Barley                    | 11,702            | 23,697       | 35,399               | 33,204               | 16,122                            | 4,000        | 20,122                  |
| Buckwheat                 | -                 | -            | -                    | -                    | -                                 | -            | -                       |
| Mixed Grain               | 9                 | 68,597       | 68,606               | 62,241               | 393                               | 1,058        | 1,451                   |
| <u>DOMINION OF CANADA</u> |                   |              |                      |                      |                                   |              |                         |
| Wheat                     | 4,328,622         | 186,492      | 4,515,114            | 4,614,569            | 7,771,664                         | 202,247      | 7,973,911               |
| Oats                      | 615,123           | 185,003      | 800,126              | 933,981              | 1,706,373                         | 43,577       | 1,749,950               |
| Corn                      | 105,142           | 140,321      | 245,463              | 214,960              | 270,447                           | 120,884      | 391,331                 |
| Barley                    | 27,409            | 43,705       | 71,114               | 87,505               | 53,213                            | 8,478        | 61,691                  |
| Buckwheat                 | -                 | 8,100        | 8,100                | 7,186                | 1,142                             | 3,430        | 4,572                   |
| Mixed Grain               | 38,781            | 1,290,902    | 1,329,683            | 1,668,912            | 1,893                             | 10,996       | 12,889                  |

MILLINGS

The following table shows the production from wheat and coarse grains ground in merchant and custom mills in Canada for the month of February, 1937, according to divisions, with comparative totals for the same month last year and stocks on hand at February 28, 1937:-

| Products                | Unit of Measure | Production from Grindings |                  |                  |                  | Stocks on hand Feb. 28, 1937 |
|-------------------------|-----------------|---------------------------|------------------|------------------|------------------|------------------------------|
|                         |                 | Eastern Division          | Western Division | Total Feb., 1937 | Total Feb., 1936 |                              |
| <u>Wheat Flour</u>      |                 |                           |                  |                  |                  |                              |
| Manitoba Sp. P. No. 1   | Barrels         | 180,943                   | 136,932          | 317,875          | 316,863          | 320,881                      |
| Manitoba Sp. P. No. 2   | "               | 136,125                   | 136,689          | 272,814          | 330,499          | 218,076                      |
| Ontario Winter Straight | "               | 61,506                    | -                | 61,506           | 59,201           | 18,307                       |
| All Other               | "               | 94,349                    | 216,615          | 310,964          | 276,294          | 513,454                      |
| Total Flour             | "               | 472,923                   | 490,236          | 963,159          | 982,857          | 1,070,718                    |
| <u>Sundry Cereals</u>   |                 |                           |                  |                  |                  |                              |
| Low Grade of Feed Flour | Barrels         | 20,499                    | 16,036           | 36,535           | 36,160           | 26,584                       |
| Bran                    | Tons            | 8,354                     | 7,385            | 15,739           | 16,828           | 4,483                        |
| Shorts                  | "               | 7,506                     | 8,677            | 16,183           | 15,499           | 5,465                        |
| Middlings               | "               | 2,358                     | 1,740            | 4,098            | 4,481            | 4,006                        |
| + All Other Offal       | "               | 3,140                     | 2,267            | 5,407            | 5,835            | 865                          |
| Oatmeal                 | Pounds          | 139,356                   | 280,676          | 420,032          | 495,282          | 237,887                      |
| Rolled Oats             | "               | 3,729,060                 | 4,922,748        | 8,651,808        | 10,642,544       | 4,759,841                    |
| Corn Flour and Meal     | "               | 2,093,048                 | -                | 2,093,048        | 1,607,494        | 642,304                      |
| Barley, Pot and Pearl   | "               | 140,638                   | 139,650          | 280,288          | 266,167          | 52,443                       |
| Buckwheat Flour         | "               | 131,764                   | -                | 131,764          | 134,029          | 9,957                        |
| <u>Ground Feed</u>      |                 |                           |                  |                  |                  |                              |
| Ground Oats             | Pounds          | 5,496,956                 | 3,377,265        | 8,874,221        | 7,621,538        | 1,112,730                    |
| Cracked Corn            | "               | 7,870,944                 | 122,680          | 7,993,624        | 7,223,395        | 463,955                      |
| Ground Barley           | "               | 1,201,498                 | 1,403,754        | 2,605,252        | 3,391,394        | 778,917                      |
| Mixed Grain             | "               | 56,403,310                | 3,015,838        | 59,419,148       | 74,671,357       | 251,865                      |

\*Including Coarse Grain Offal.

Flour production for the month of February, 1937 amounted to 999,694 barrels compared with 1,019,017 barrels for the same month last year. Wheat offal was lower, with bran 15,739 (16,828) tons, shorts 16,183 (15,499) tons and middlings 4,098 (4,481) tons.

Cereal production for February, 1937 was as follows with figures for the same month last year in brackets and the quantities in pounds: Oatmeal, 420,032 (495,282); Rolled Oats, 8,651,808 (10,642,544); Corn Flour and Meal, 2,093,048 (1,607,494); Pot and Pearl Barley, 280,288 (266,167); and Buckwheat Flour, 131,764 (134,029).

Animal feed products were weaker in volume than for February of last year, comparing as follows: Ground Oats, 8,874,221 (7,621,538) pounds; Cracked Corn, 7,993,624 (7,223,395) pounds; Ground Barley, 2,605,252 (3,391,394) pounds; and Mixed Grain, 59,419,148 (74,671,357) pounds.

Total flour stocks for the month of February, 1937 amounted to 1,097,302 barrels compared with 1,066,783 barrels for the same month last year and 1,091,723 barrels for the previous month.

# SUMMARY OF MILL GRINDINGS

The following table summarizes the mill grind of wheat, oats, corn, barley and mixed grain for the first seven months of the crop year 1936-37, with comparative figures for 1935-36:-

| Months          | Wheat      | Oats      | Corn<br>(Bushels) | Barley  | Mixed Grain |
|-----------------|------------|-----------|-------------------|---------|-------------|
| August, 1936    | 6,226,419  | 1,076,262 | 305,902           | 82,099  | 976,864     |
| September       | 6,866,806  | 1,107,886 | 273,700           | 104,696 | 1,269,421   |
| October         | 7,681,108  | 1,334,687 | 306,503           | 129,864 | 1,597,656   |
| November        | 6,594,206  | 1,241,218 | 247,246           | 120,751 | 1,691,600   |
| December        | 4,921,327  | 1,131,106 | 280,583           | 100,179 | 1,673,473   |
| January, 1937   | 4,559,838  | 1,038,842 | 232,776           | 87,463  | 1,399,984   |
| February        | 4,515,114  | 800,126   | 245,463           | 71,114  | 1,329,683   |
| T O T A L       | 41,364,818 | 7,730,127 | 1,892,173         | 696,166 | 9,938,681   |
| TOTAL LAST YEAR | 41,120,473 | 7,826,313 | 1,399,655         | 645,999 | 10,931,232  |

# SUMMARY OF MILL PRODUCTION

The following table summarizes the production of wheat flour, oatmeal, rolled oats and corn flour and meal for the first seven months of the crop year 1936-37, including percentage of operation and wheat flour exports, with comparative figures for 1935-36:-

| Months          | Wheat Flour                |                     | Oatmeal<br>Pounds | Rolled<br>Oats<br>Pounds | Corn Flour<br>and Meal<br>Pounds | Wheat Flour<br>Exported<br>Barrels |
|-----------------|----------------------------|---------------------|-------------------|--------------------------|----------------------------------|------------------------------------|
|                 | Percentage<br>of operation | Quantity<br>Barrels |                   |                          |                                  |                                    |
| August, 1936    | 57.0                       | 1,362,679           | 561,324           | 13,725,254               | 3,018,322                        | 387,728                            |
| September       | 64.7                       | 1,516,123           | 669,032           | 13,431,935               | 3,100,740                        | 378,318                            |
| October         | 69.7                       | 1,701,267           | 828,039           | 15,644,707               | 2,641,308                        | 464,013                            |
| November        | 65.3                       | 1,459,388           | 882,480           | 13,989,015               | 2,230,422                        | 408,653                            |
| December        | 44.8                       | 1,090,392           | 728,672           | 12,808,934               | 1,973,524                        | 475,282                            |
| January, 1937   | 43.9                       | 1,008,630           | 1,026,104         | 11,271,533               | 1,620,204                        | 313,923                            |
| February        | 44.6                       | 999,694             | 420,032           | 8,651,808                | 2,093,048                        | 347,884                            |
| T O T A L       |                            | 9,138,173           | 5,115,683         | 89,523,186               | 16,677,568                       | 2,775,801                          |
| TOTAL LAST YEAR |                            | 9,083,359           | 6,486,807         | 89,943,072               | 14,343,780                       | 2,897,253                          |

The following table shows the manufacture of buckwheat flour for the calendar years 1930 to 1936:

| Months    | 1930      | 1931      | 1932      | 1933      | 1934      | <sup>x</sup> 1935 | <sup>x</sup> 1936 |
|-----------|-----------|-----------|-----------|-----------|-----------|-------------------|-------------------|
|           |           |           |           | (Pounds)  |           |                   |                   |
| January   | 185,282   | 192,665   | 148,353   | 158,456   | 219,177   | 211,380           | 122,070           |
| February  | 187,696   | 191,552   | 102,828   | 180,580   | 119,225   | 178,554           | 134,029           |
| March     | 144,674   | 190,296   | 83,916    | 140,044   | 152,710   | 187,540           | 31,298            |
| April     | 88,540    | 95,336    | 70,177    | 118,197   | 75,791    | 114,290           | 134,634           |
| May       | 48,728    | 99,996    | 27,724    | 40,704    | 54,949    | 55,856            | 26,560            |
| June      | 88,944    | 101,528   | 43,764    | 68,353    | 70,584    | 75,894            | 86,754            |
| July      | 55,632    | 90,486    | 31,413    | 52,464    | 68,304    | 76,114            | 47,396            |
| August    | 79,904    | 88,160    | 36,784    | 73,328    | 55,372    | 76,230            | 69,594            |
| September | 313,934   | 207,840   | 407,390   | 382,014   | 314,622   | 161,334           | 157,308           |
| October   | 694,285   | 800,614   | 897,668   | 923,520   | 675,771   | 580,221           | 548,058           |
| November  | 583,558   | 574,344   | 674,730   | 822,473   | 644,508   | 558,900           | 475,380           |
| December  | 326,608   | 307,526   | 422,901   | 357,924   | 296,456   | 318,893           | 311,476           |
| T O T A L | 2,797,845 | 2,940,343 | 2,947,648 | 3,318,057 | 2,747,469 | 2,595,206         | 2,144,557         |

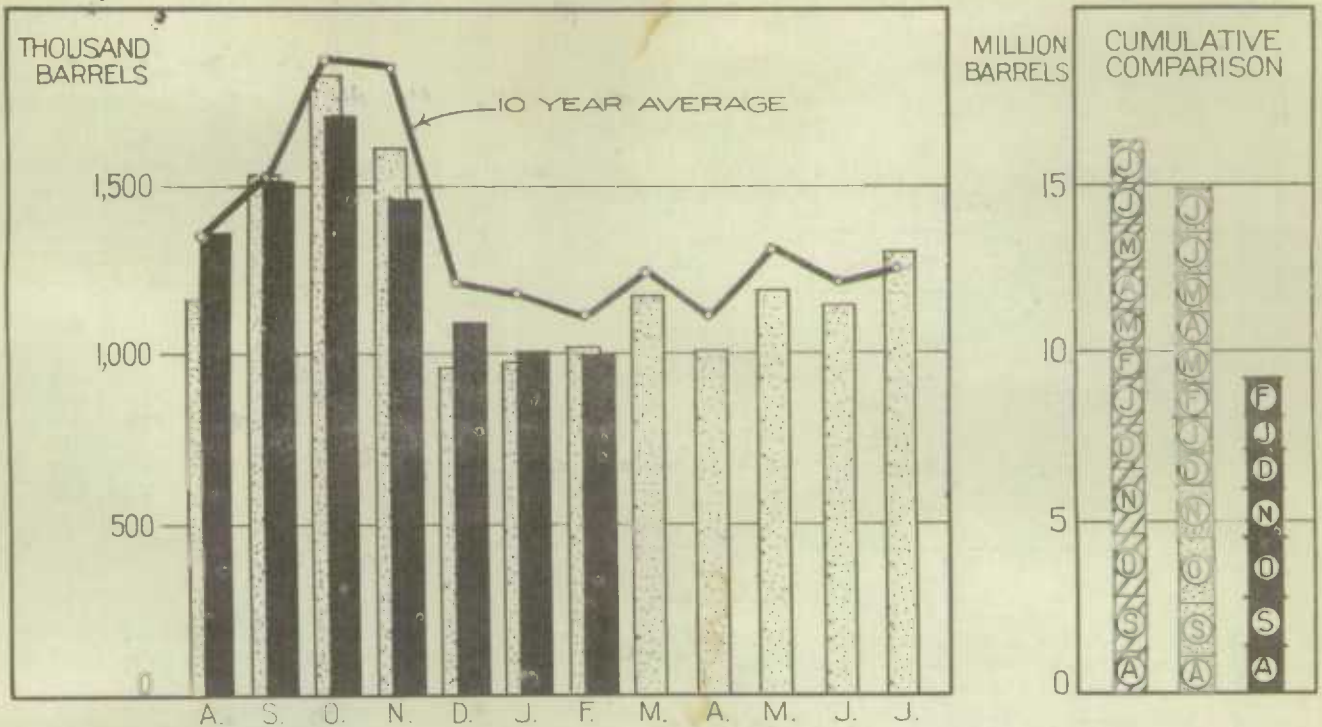
<sup>x</sup> Preliminary figures.



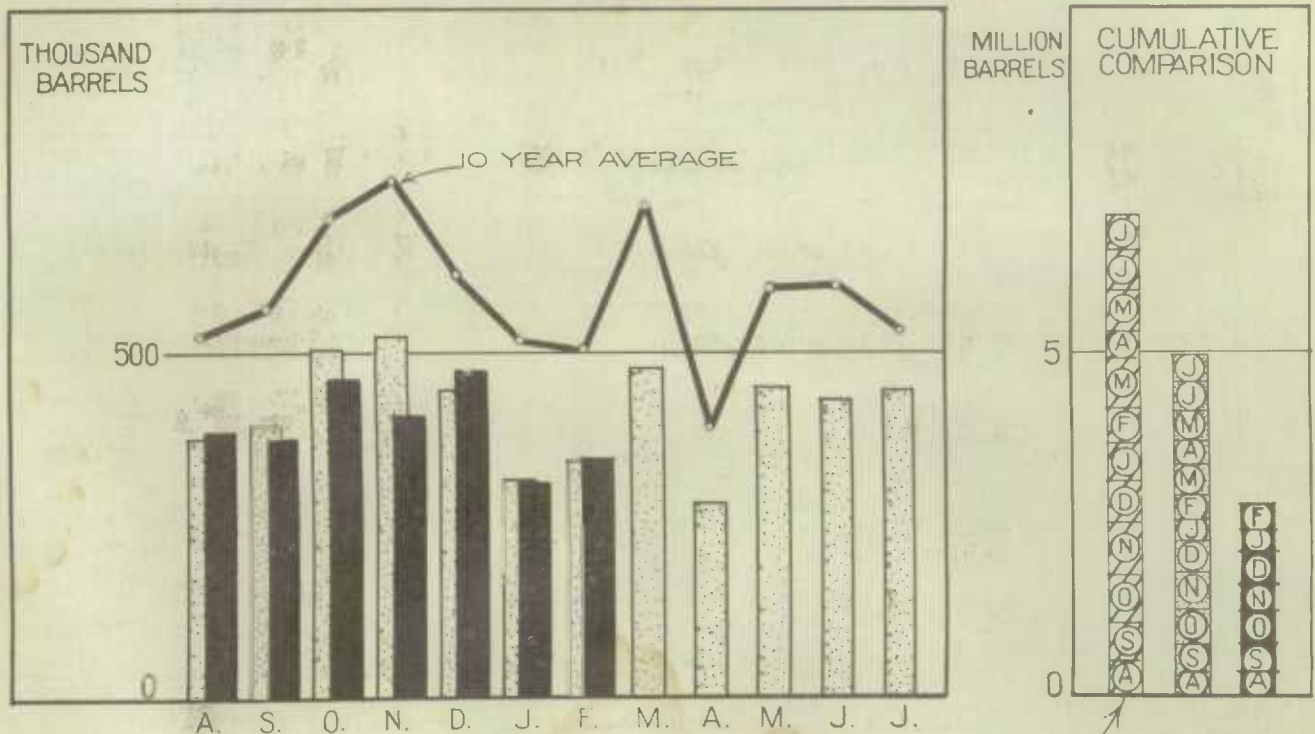


1010633786

## WHEAT FLOUR PRODUCTION



## WHEAT FLOUR EXPORT



### LEGEND

