

Published by Authority of the HON. W. D. EULER, M.P.,
Minister of Trade and Commerce

DOMINION BUREAU OF STATISTICS - CANADA
AGRICULTURAL BRANCH

Dominion Statistician: R. H. Coats, LL.D., F.R.S.C., F.S.S. (Hon.)
Chief, Agricultural Branch: T. W. Grindley, Ph.D.

CANADIAN MILLING STATISTICS

January, 1938.

Ottawa, Canada, March 3, 1938.- The Dominion Bureau of Statistics publishes, herewith, preliminary statistics of grains ground and products for January, 1938, with comparison for the previous year, inventory for the month and wheat flour exports.

The daily capacity reporting for January, 1938 amounted to 95,365 barrels.

SUMMARY

During the month of January, 1938, 4,137,413 bushels of wheat were ground in Canadian mills compared with 4,559,838 bushels for the corresponding month of the previous year. Oats, barley, buckwheat and mixed grain were higher than for January, 1937, while corn was slightly lower.

Grains ground for the month of January, 1938 are shown in bushels with comparative figures for the same month of the previous year in brackets: Wheat 4,137,413 (4,559,838); Oats 1,088,788 (1,038,842); Corn 222,147 (232,776); Barley 108,179 (87,463); Buckwheat 13,413 (11,720); and Mixed Grain 1,578,220 (1,399,984).

Mill stocks of wheat on January 31, 1938 amounted to 4,662,271 bushels, while for the same month in 1937 the amount was 9,145,309 bushels.

Flour production in January, 1938 amounted to 921,285 barrels compared with 1,008,630 barrels for the same month last year. Exports of flour in January, 1938 amounted to 295,776 barrels compared with 313,923 barrels in January, 1937.

MILL GRINDINGS

The following table shows the amount of wheat, oats, corn, barley, buckwheat and mixed grain milled for the month of January, 1938, by merchant and custom mills in Canada according to divisions, with comparative totals for the same month last year and stocks on hand at January 31, 1938 (in bushels):-

Grain	Quantities Ground				Stocks on hand, January 31, 1938		
	Merchant Mills	Custom Mills	Total January, 1938	Total January, 1937	Merchant Mills	Custom Mills	Total January 31, 1938
<u>EASTERN DIVISION</u>							
Wheat	2,118,582	87,571	2,206,153	2,497,478	1,750,595	92,153	1,842,748
Oats	566,172	96,389	662,561	590,769	314,758	41,427	356,185
Corn	107,354	111,914	219,268	228,934	360,380	24,031	384,411
Barley	31,465	29,602	61,067	36,760	60,871	21,110	81,981
Buckwheat	-	13,413	13,413	11,720	10,177	6,248	16,425
Mixed Grain	41,952	1,465,239	1,507,191	1,338,132	1,625	9,349	10,974
<u>WESTERN DIVISION</u>							
Wheat	1,869,502	61,758	1,931,260	2,062,360	2,738,464	81,059	2,819,523
Oats	350,083	76,144	426,227	448,073	671,750	10,048	681,798
Corn	2,370	509	2,879	3,842	19,069	2	19,071
Barley	20,673	25,439	47,112	50,703	23,689	5,008	28,697
Buckwheat	-	-	-	-	-	-	-
Mixed Grain	36	70,993	71,029	61,852	182	277	459
<u>DOMINION OF CANADA</u>							
Wheat	3,988,084	149,329	4,137,413	4,559,838	4,489,059	173,212	4,662,271
Oats	916,255	172,533	1,088,788	1,038,842	986,508	51,475	1,037,983
Corn	109,724	112,423	222,147	232,776	379,449	24,033	403,482
Barley	52,138	56,041	108,179	87,463	84,560	26,118	110,678
Buckwheat	-	13,413	13,413	11,720	10,177	6,248	16,425
Mixed Grain	41,988	1,536,232	1,578,220	1,399,984	1,807	9,626	11,433

MILLINGS

The following table shows the production from wheat and coarse grains ground in merchant and custom mills in Canada for the month of January, 1938, according to divisions, with comparative totals for the same month last year and stocks on hand at January 31, 1938:-

Products	Unit of Measure	Production from Grindings				Stocks on hand January 31, 1938
		Eastern Division	Western Division	Total January, 1938	Total January, 1937	
<u>Wheat Flour</u>						
Manitoba Sp. P. No. 1	Barrels	177,681	126,461	304,142	334,737	302,745
Manitoba Sp. P. No. 2	"	146,111	112,635	258,746	290,370	233,021
Ontario Winter Straight	"	56,800	-	56,800	62,069	24,614
All Other	"	103,187	171,607	274,794	285,326	583,741
Total Flour	"	483,779	410,703	894,482	972,502	1,144,121
<u>Sundry Cereals</u>						
Low Grade of Feed Flour	Barrels	13,010	13,793	26,803	36,128	30,893
Bran	Tons	7,299	6,020	13,319	16,693	2,661
Shorts	"	7,283	6,491	13,774	15,510	3,545
Middlings	"	2,341	1,701	4,042	4,799	2,749
All Other Offal*	"	3,861	2,267	6,128	5,601	2,327
Oatmeal	Pounds	564,676	265,826	830,502	1,026,104	1,408,299
Rolled Oats	"	7,090,920	4,679,914	11,770,834	11,271,533	6,853,236
Corn Flour and Meal	"	2,214,502	-	2,214,502	1,620,204	544,366
Barley, Pot and Pearl	"	117,636	50,764	168,400	251,218	253,758
Buckwheat Flour	"	218,730	-	218,730	220,415	22,618
<u>Ground Feed</u>						
Ground Oats	Pounds	4,672,038	3,814,454	8,486,492	10,498,205	1,709,146
Cracked Corn	"	6,982,601	161,320	7,143,921	9,591,240	940,992
Ground Barley	"	2,682,360	2,114,648	4,797,008	3,472,470	719,795
Mixed Grain	"	67,550,946	3,181,148	70,732,094	62,133,643	293,102
* Including Coarse Grain Offal.						

* Including Coarse Grain Offal.

Flour production for the month of January, 1938 amounted to 921,285 barrels, a decrease of 87,345 barrels from the same month of the previous year when 1,008,630 barrels were manufactured. Wheat offal followed the lower flour trend with bran 13,319 (16,693) tons, shorts 13,774 (15,510) tons, and middlings 4,042 (4,799) tons.

Cereal production for January, 1938 was as follows with figures for the same month last year in brackets and the quantities in pounds: Oatmeal, 830,502 (1,026,104); Rolled Oats, 11,770,834 (11,271,533); Corn Flour and Meal, 2,214,502 (1,620,204); Pot and Pearl Barley, 168,400 (251,218); and Buckwheat Flour, 218,730 (220,415).

In the millfeed group, ground barley and mixed grain were greater in volume than for the same month last year. The four items compared as follows: Ground Oats, 8,486,492 (10,498,205) pounds; Cracked Corn, 7,143,921 (9,591,240) pounds; Ground Barley, 4,797,008 (3,472,470) pounds; and Mixed Grain, 70,732,094 (62,133,643) pounds.

Total flour stocks for the month of January, 1938 amounted to 1,175,014 barrels compared with 1,091,723 barrels for the same month in 1937 and 1,186,481 barrels for the previous month.

SUMMARY OF MILL GRINDINGS

The following table summarizes the mill grind of wheat, oats, corn, barley and mixed grain for the first six months of the crop year 1937-38, with comparative figures for 1936-37:-

Months	Wheat	Oats	Corn	Barley	Mixed Grain
(Bushels)					
August, 1937	4,712,746	837,433	231,643	85,601	714,113
September	6,418,235	1,128,172	219,842	130,936	1,241,096
October	6,626,888	1,291,496	306,272	135,337	1,460,519
November	6,473,672	1,522,321	247,907	139,232	1,711,986
December	4,552,164	1,191,595	225,138	124,409	1,747,553
January, 1938	4,137,413	1,088,788	222,147	108,179	1,578,220
TOTAL	32,921,118	7,059,805	1,452,949	723,694	8,453,487
TOTAL LAST YEAR	36,849,704	6,930,001	1,546,710	625,052	8,608,998

SUMMARY OF MILL PRODUCTION

The following table summarizes the production of wheat flour, oatmeal, rolled oats and corn flour and meal for the first six months of the crop year 1937-38, including percentage of operation and wheat flour exports, with comparative figures for 1936-37:-

Months	Wheat Flour		Oatmeal Pounds	Rolled Oats Pounds	Corn Flour and Meal Pounds	Wheat Flour Exported Barrels
	Percentage of Operation	Quantity Barrels				
August, 1937	44.0	1,042,949	473,546	10,219,290	1,993,480	288,608
September	61.5	1,437,586	838,850	13,546,438	2,128,854	306,655
October	63.9	1,489,185	688,108	15,747,667	2,476,304	336,478
November	62.2	1,449,419	1,039,574	17,451,906	2,292,148	405,921
December	42.1	1,010,971	1,085,780	13,627,225	1,738,544	337,678
January, 1938	38.7	921,285	830,502	11,770,834	2,214,502	295,776
TOTAL		7,351,395	4,956,360	82,363,360	12,843,832	1,971,116
TOTAL LAST YEAR		8,138,479	4,695,651	80,871,378	14,584,520	2,427,917

The following table shows the manufacture of corn flour and meal in Canada, calendar years 1932 to 1937:-

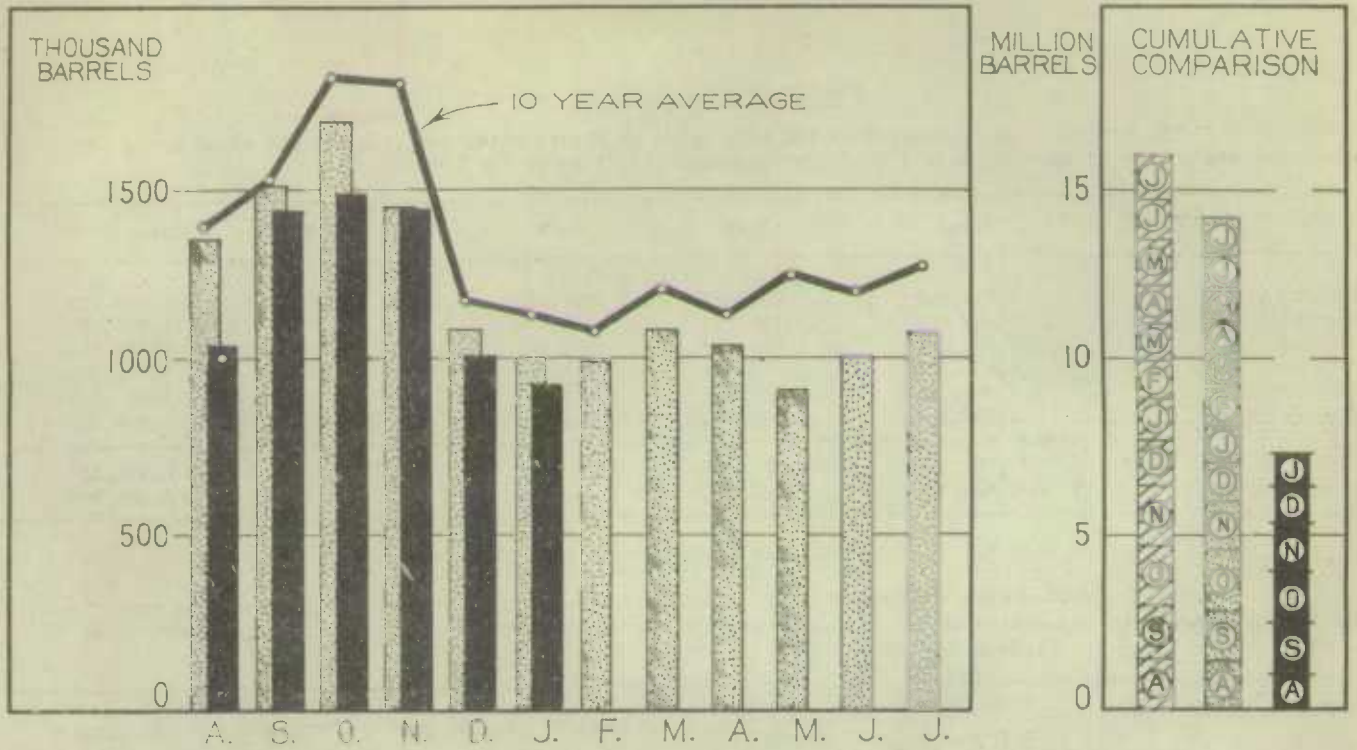
Months	1932	1933	1934	1935	1936	1937*
(Bushels)						
January	1,248,105	759,972	1,428,968	894,306	1,722,118	1,620,204
February	1,632,260	1,042,878	1,447,127	1,491,528	1,607,494	2,093,048
March	1,446,422	2,196,044	1,181,990	1,560,504	2,304,980	2,391,456
April	1,572,116	1,983,520	1,141,966	1,500,040	2,119,274	1,923,176
May	1,130,970	2,248,758	1,398,166	2,013,508	1,845,144	1,767,724
June	1,468,628	1,266,352	1,726,506	1,914,815	2,398,522	1,902,575
July	1,731,709	1,633,596	1,746,106	2,182,370	2,037,400	2,244,240
August	1,611,076	1,514,590	2,215,458	2,321,082	3,018,322	1,993,480
September	1,325,254	1,320,404	1,894,880	2,312,180	3,100,740	2,128,854
October	1,294,032	2,153,041	1,725,600	2,842,570	2,641,308	2,476,304
November	1,887,653	2,109,060	1,570,810	1,944,746	2,230,422	2,292,148
December	1,520,080	1,347,928	1,036,210	1,543,590	1,973,524	1,738,544
T O T A L	17,868,305	19,576,143	18,515,787	22,521,239	26,999,248	24,571,853

* Preliminary from August to December.

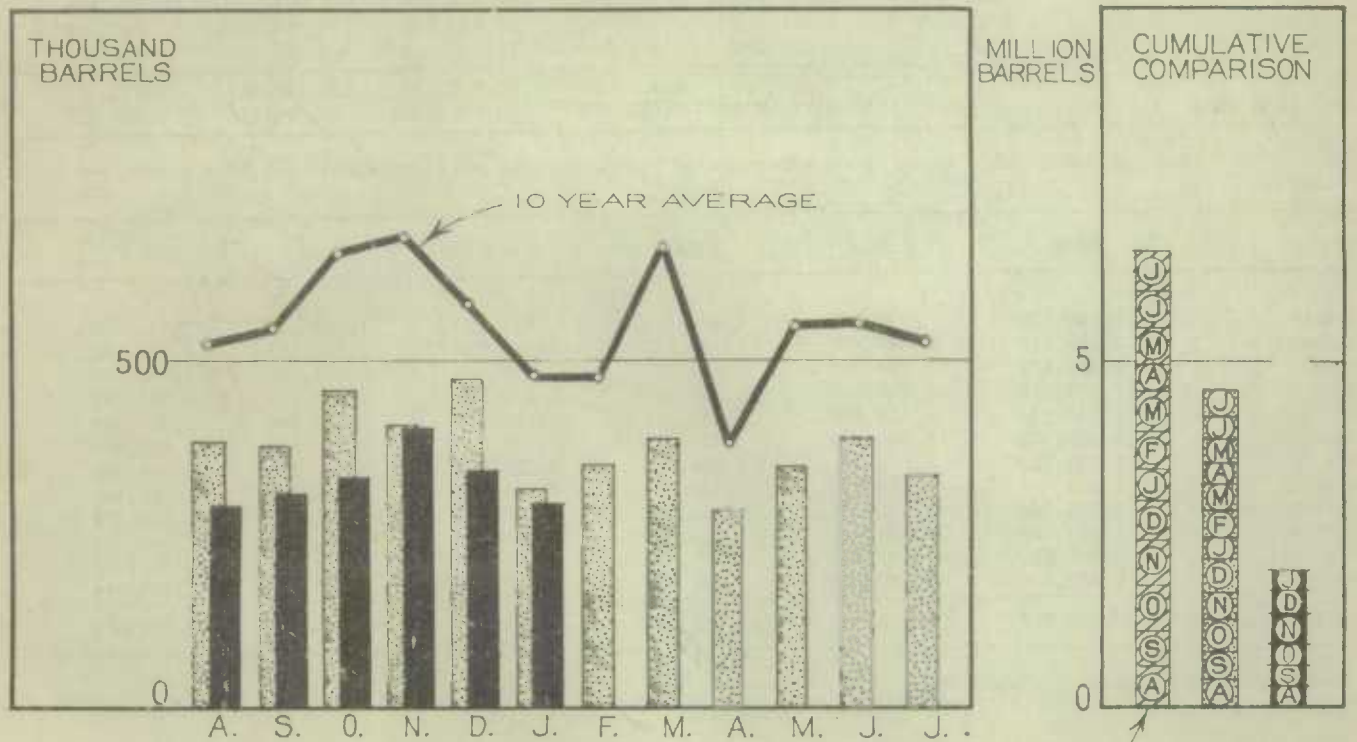


1010633773

WHEAT FLOUR PRODUCTION



WHEAT FLOUR EXPORT



LEGEND

