

Published by Authority of the HON. W. D. EULER, M.P.
Minister of Trade and Commerce

DOMINION BUREAU OF STATISTICS - CANADA
AGRICULTURAL BRANCH

Dominion Statistician:
Chief, Agricultural Branch:

R. H. Coats, LL.D., F.R.S.C., F.S.S. (Hon.)
T. W. Grindley, Ph.D.

CANADIAN MILLING STATISTICS

March, 1938.

Ottawa, Canada, May 5, 1938.- The Dominion Bureau of Statistics publishes, herewith, preliminary statistics of grains ground and products for March, 1938, with comparisons for the previous year, inventory for the month and wheat flour exports.

The daily capacity reporting for March, 1938 amounted to 93,781 barrels.

SUMMARY

During the month of March, 1938, 4,498,940 bushels of wheat were ground in Canadian mills compared with 4,940,114 bushels for the corresponding month of the previous year. With the exception of corn and buckwheat, coarse grains were higher than for March 1937.

Grains ground for the month of March, 1938 are shown in bushels with comparative figures for the same month of the previous year in brackets: Wheat 4,498,940 (4,940,114); Oats 945,541 (649,288); Corn 279,028 (384,744); Barley 115,917 (70,022); Buckwheat 6,951 (7,305); and Mixed Grain 1,610,123 (1,216,850).

Mill stocks of wheat on March 31, 1938 amounted to 3,590,551 bushels, while for the same month in 1937 the amount was 6,100,645 bushels.

Flour production in March, 1938 amounted to 999,387 barrels compared with 1,098,544 barrels for the same month last year. Exports of flour in March, 1938 amounted to 301,735 barrels compared with 390,315 barrels in March, 1937.

MILL GRINDINGS

The following table shows the amount of wheat, oats, corn, barley, buckwheat and mixed grain milled for the month of March, 1938, by merchant and custom mills in Canada according to divisions, with comparative totals for the same month last year and stocks on hand at March 31, 1938 (in bushels):-

Grain	Quantities Ground				Stocks on Hand, March 31, 1938		
	Merchant Mills	Custom Mills	Total March, 1938	Total March, 1937	Merchant Mills	Custom Mills	Total March 31, 1938
<u>EASTERN DIVISION</u>							
Wheat	2,273,720	94,105	2,367,825	2,431,642	1,217,586	106,674	1,324,260
Oats	376,628	164,519	541,147	355,188	552,201	47,595	599,796
Corn	119,099	157,365	276,464	382,242	240,448	62,018	302,466
Barley	32,798	39,865	72,663	42,596	47,414	22,483	69,897
Buckwheat	-	6,951	6,951	7,305	7,749	3,626	11,375
Mixed Grain	46,490	1,499,127	1,545,617	1,166,964	4,176	38,006	42,182
<u>WESTERN DIVISION</u>							
Wheat	2,061,249	69,866	2,131,115	2,508,472	2,106,827	159,464	2,266,291
Oats	343,808	60,586	404,394	314,100	535,356	7,460	542,816
Corn	2,404	160	2,564	2,502	10,754	100	10,854
Barley	19,211	24,043	43,254	27,426	21,831	9,355	31,186
Buckwheat	-	-	-	-	-	-	-
Mixed Grain	18	64,488	64,506	49,886	114	560	674
<u>DOMINION OF CANADA</u>							
Wheat	4,334,969	163,971	4,498,940	4,940,114	3,324,413	266,138	3,590,551
Oats	720,436	225,105	945,541	649,288	1,087,557	55,055	1,142,612
Corn	121,503	157,525	279,028	384,744	251,202	62,118	313,320
Barley	52,009	63,908	115,917	70,022	69,245	31,838	101,083
Buckwheat	-	6,951	6,951	7,305	7,749	3,626	11,375
Mixed Grain	46,508	1,565,615	1,610,123	1,216,850	4,290	38,566	42,856

MILLINGS

The following table shows the production from wheat and coarse grains ground in merchant and custom mills in Canada for the month of March, 1938, according to divisions, with comparative totals for the same month last year and stocks on hand at March 31, 1938:-

Products	Unit of Measure	Production from Grindings				Stocks on hand March 31, 1938
		Eastern Division	Western Division	Total March, 1938	Total March, 1937	
<u>Wheat Flour</u>						
Manitoba Sp. P. No. 1	Barrels	180,621	158,286	338,907	354,137	286,254
Manitoba Sp. P. No. 2	"	144,964	121,244	266,208	319,216	208,715
Ontario Winter Straight	"	66,082	-	66,082	53,247	20,532
All other	"	121,149	177,549	298,698	331,981	542,372
Total Flour	"	512,816	457,079	969,895	1,058,581	1,057,873
<u>Sundry Cereals</u>						
Low Grade or Feed Flour	Barrels	14,881	14,611	29,492	39,963	24,834
Bran	Tons	8,260	6,723	14,983	17,374	2,623
Shorts	"	7,665	6,890	14,555	17,447	4,043
Middlings	"	2,794	1,825	4,619	4,614	2,811
All Other Offal*	"	4,554	2,281	6,835	5,613	2,466
Oatmeal	Pounds	285,604	294,146	579,750	611,187	1,296,316
Rolled Oats	"	5,191,920	4,803,482	9,995,402	6,537,309	5,816,314
Corn Flour and Meal	"	2,208,412	-	2,208,412	2,391,456	750,080
Barley, Pot and Pearl	"	201,762	145,040	346,802	302,190	324,400
Buckwheat Flour	"	112,447	-	112,447	128,916	24,455
<u>Ground Feed</u>						
Ground Oats	Pounds	6,235,613	3,105,422	9,341,035	9,182,142	1,263,210
Cracked Corn	"	8,284,132	143,600	8,427,732	13,434,697	700,074
Ground Barley	"	3,012,979	1,756,218	4,769,197	2,776,036	378,495
Mixed Grain	"	68,876,803	2,903,546	71,780,349	54,238,399	493,419

* Including Coarse Grain Offal

Flour production for the month of March, 1938 amounted to 999,387 barrels. This was an increase over the previous month's grind of 849,228 barrels but fell below the same month last year when 1,068,544 barrels were manufactured. Wheat offal followed the downward trend of flour with bran 14,983 (17,374) tons, shorts 14,555 (17,447) tons and middlings 4,619 (4,614) tons.

Cereal production for March, 1938 was as follows with figures for the same month last year in brackets and the quantities in pounds: Oatmeal, 579,750 (611,187); Rolled Oats, 9,995,402 (6,537,309); Corn Flour and Meal, 2,208,412 (2,391,456); Pot and Pearl Barley, 346,802 (302,190); Buckwheat Flour 112,447 (128,916).

In the animal feed group, ground barley and mixed grain were much higher than for the same month in 1937. The four items compared as follows: Ground Oats, 9,341,035 (9,182,142) pounds; Cracked Corn, 8,427,732 (13,434,697) pounds; Ground Barley, 4,769,197 (2,776,036) pounds; and Mixed Grain, 71,780,349 (54,238,399) pounds.

Total flour stocks amounted to 1,082,707 barrels compared with 1,127,949 barrels for the same month last year and 1,103,597 barrels for the previous month.

SUMMARY OF MILL GRINDINGS

The following table summarizes the mill grind of wheat, oats, corn, barley and mixed grain for the first eight months of the crop year 1937-38, with comparative figures for 1936-37:-

Months	Wheat	Oats	Corn	Barley	Mixed Grain
			(Bushels)		
August, 1937	4,712,746	837,433	231,643	85,601	714,113
September	6,418,235	1,128,172	219,842	130,936	1,241,096
October	6,626,888	1,291,496	306,272	135,337	1,460,519
November	6,473,672	1,322,321	247,907	139,232	1,711,986
December	4,552,164	1,191,595	225,138	124,409	1,747,553
January, 1938	4,137,413	1,088,788	222,147	106,179	1,578,220
February	3,819,153	1,042,447	233,305	133,310	1,828,161
March	4,498,940	945,541	279,028	115,917	1,610,123
TOTAL	41,239,211	9,047,793	1,967,282	972,921	11,891,771
TOTAL LAST YEAR	46,304,932	8,379,415	2,276,917	766,188	11,155,531

SUMMARY OF MILL PRODUCTION

The following table summarizes the production of wheat flour, oatmeal, rolled oats and corn flour and meal for the first eight months of the crop year 1937-38, including percentage of operation and wheat flour exports, with comparative figures for 1936-37:

Months	Wheat Flour		Oatmeal	Rolled Oats	Corn Flour and Meal	Wheat Flour Exported
	Percentage of Operation	Quantity Barrels	Pounds	Pounds	Pounds	Barrels
August, 1937	44.0	1,042,949	473,546	10,219,290	1,993,480	288,608
September	61.5	1,437,586	838,850	13,546,438	2,128,854	306,655
October	63.9	1,489,185	688,108	15,747,667	2,476,304	336,478
November	62.2	1,449,419	1,039,574	17,451,906	2,292,148	405,921
December	42.1	1,010,971	1,085,780	13,627,225	1,738,544	337,678
January, 1938	38.7	921,285	830,502	11,770,834	2,214,502	295,776
February	38.4	849,228	723,038	10,731,207	1,729,202	272,488
March	41.1	999,387	579,750	9,995,402	2,208,412	301,735
TOTAL		9,200,010	6,259,148	103,089,969	16,781,446	2,545,339
TOTAL LAST YEAR		10,236,717	5,726,870	96,060,495	19,069,024	3,166,116

The following table shows the production of mixed grain feed for the calendar years 1932 - 1937:

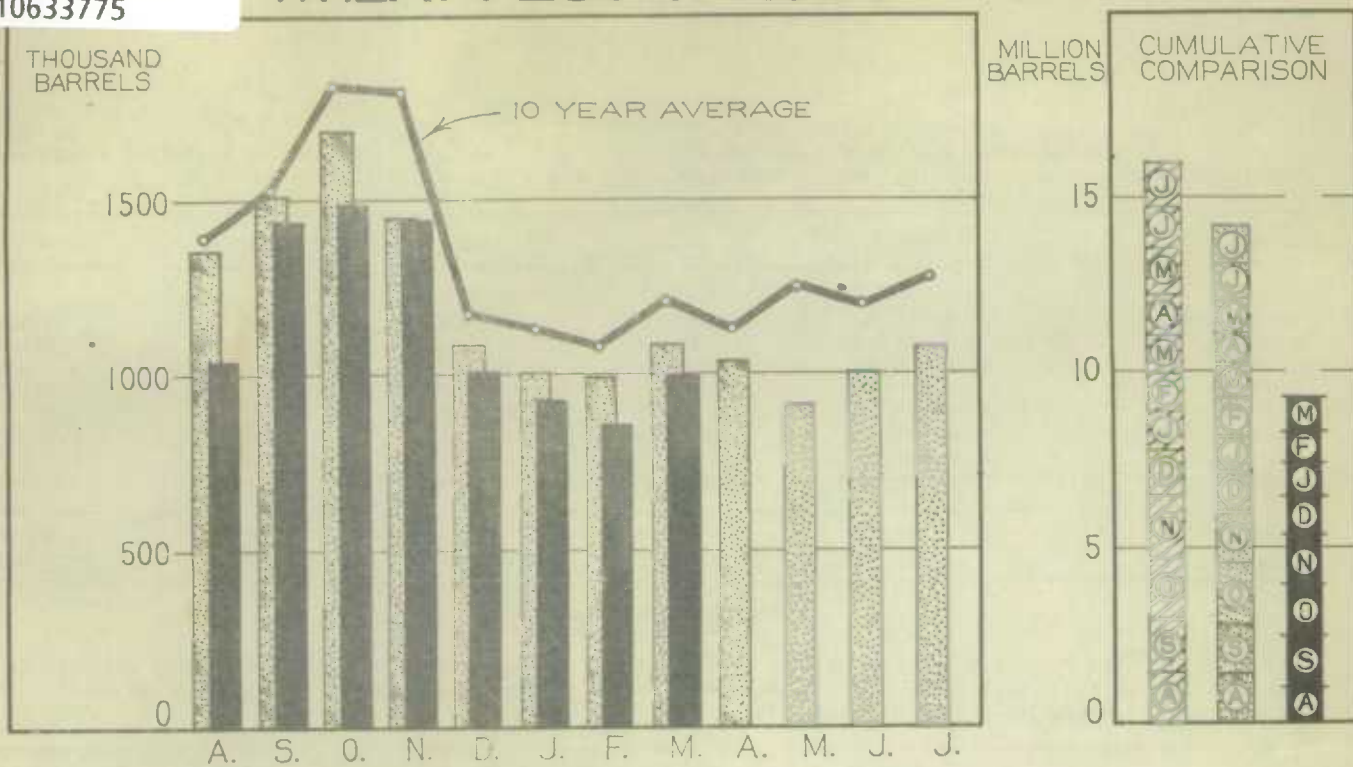
Months	1932	1933	1934	1935	1936	1937*
				(Pounds)		
January	79,900,991	69,927,317	59,059,082	67,978,754	81,458,096	61,762,151
February	75,604,830	61,880,472	54,323,344	63,144,493	75,688,182	53,820,274
March	77,276,545	66,094,109	56,402,138	64,289,632	74,310,851	55,735,540
April	65,339,521	57,966,341	46,790,899	61,904,803	71,102,911	49,111,858
May	47,205,512	43,379,872	33,266,941	49,511,622	44,433,778	35,302,814
June	34,394,075	29,732,188	23,964,527	35,098,461	39,704,002	27,615,874
July	31,636,332	25,620,167	21,287,295	30,740,782	38,438,622	24,064,111
August	39,240,440	37,530,786	33,150,561	39,668,027	46,872,567	31,714,436
September	55,642,854	50,935,256	46,936,030	54,434,034	58,975,481	55,433,704
October	69,346,574	61,727,024	59,338,377	71,403,856	70,002,354	65,419,388
November	87,604,619	71,626,598	69,969,546	82,367,560	74,980,042	76,689,145
December	80,422,034	62,712,646	72,700,946	85,518,493	73,634,964	77,855,742
T O T A L	743,614,327	639,132,776	577,189,686	706,060,517	749,601,850	614,525,035

* Preliminary from August to December, 1937.

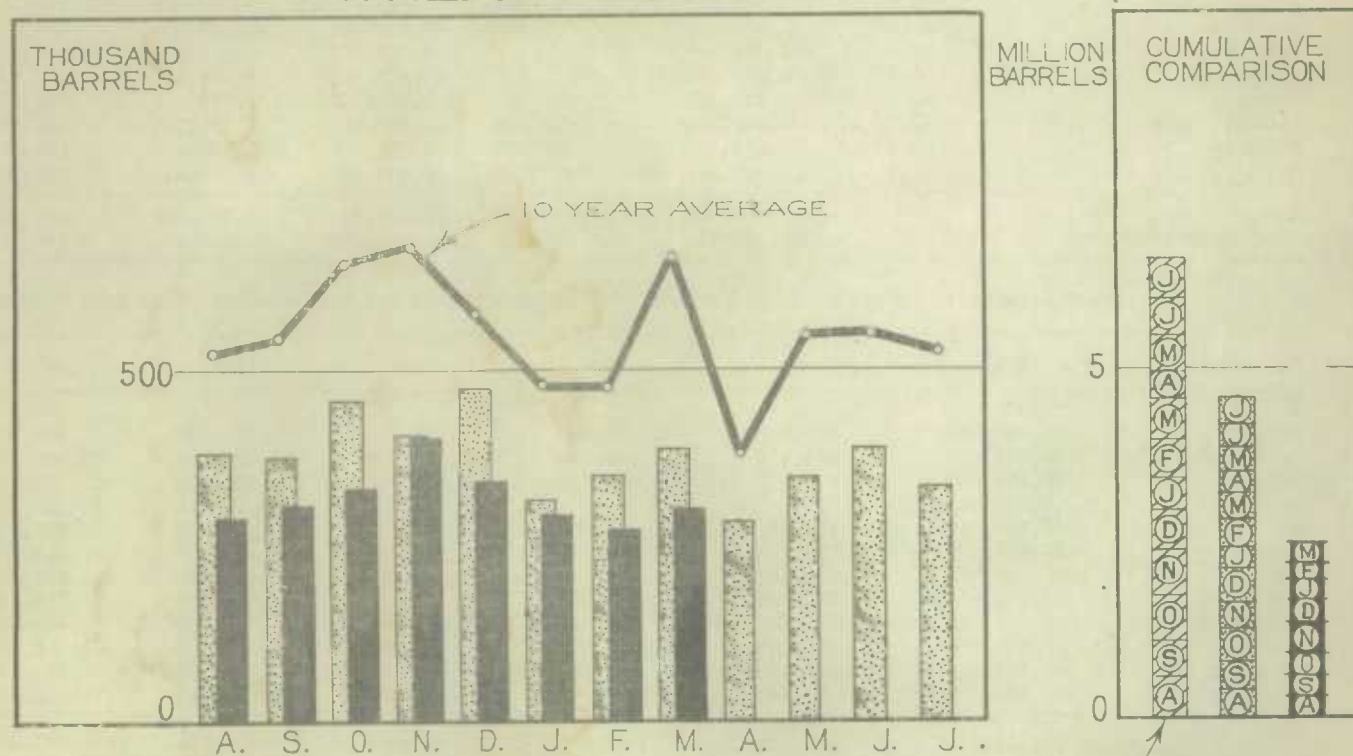


1010633775

WHEAT FLOUR PRODUCTION



WHEAT FLOUR EXPORT



LEGEND

