

Published by Authority of the HON. W. D. EULER, M.P.,
Minister of Trade and Commerce

DOMINION BUREAU OF STATISTICS - CANADA
AGRICULTURAL BRANCH



Dominion Statistician:
Chief, Agricultural Branch:

R. H. Coats, LL.D., F.R.S.C., F.S.S.(Hon.)
T. W. Grindley, Ph.D.

CANADIAN MILLING STATISTICS

April, 1938.

Ottawa, Canada, June 2, 1938.- The Dominion Bureau of Statistics publishes, herewith, preliminary statistics of grains ground and products for April, 1938, with comparisons for the previous year, inventory for the month and wheat flour exports.

The daily capacity reporting for April, 1938 amounted to 93,275 barrels.

SUMMARY

During the month of April, 1938, 3,591,547 bushels of wheat were ground in Canadian mills compared with 4,750,994 bushels for the corresponding month of the previous year. In the coarse grain group, barley, buckwheat and mixed grain were higher than for April, 1937, while oats and corn were lower.

Grains ground for the month of April, 1938 are shown in bushels with comparative figures for the same month of the previous year in brackets: Wheat 3,591,547 (4,750,994); Oats 714,122 (822,207); Corn 259,819 (313,495); Barley 98,958 (68,408); Buckwheat 6,711 (5,574); and Mixed Grain 1,651,833 (1,112,439).

Mill stocks of wheat on April 30, 1938 amounted to 3,711,332 bushels, while for the same month in 1937 the amount was 6,029,642 bushels.

Flour production in April, 1938 amounted to 794,282 barrels compared with 1,051,564 barrels for the same month last year. Exports of flour in April, 1938 amounted to 184,703 barrels compared with 285,724 barrels in April 1937.

MILL GRINDINGS

The following table shows the amount of wheat, oats, corn, barley, buckwheat and mixed grain milled for the month of April, 1938, by merchant and custom mills in Canada according to divisions, with comparative totals for the same month last year and stocks on hand at April 30, 1938 (in bushels):

Grain	Quantities Ground				Stocks on hand, April 30, 1938		
	Merchant Mills	Custom Mills	Total April, 1938	Total April, 1937	Merchant Mills	Custom Mills	Total April 30, 1938
<u>EASTERN DIVISION</u>							
Wheat	1,893,029	113,479	2,006,508	2,545,244	1,655,159	79,303	1,734,462
Oats	286,398	150,629	437,017	384,339	532,031	48,343	580,374
Corn	112,783	144,499	257,282	310,787	141,965	43,632	185,597
Barley	28,076	44,726	72,802	36,919	46,173	19,885	66,058
Buckwheat	-	6,711	6,711	5,574	7,493	4,065	11,558
Mixed Grain	43,556	1,506,292	1,549,848	1,063,916	916	27,763	28,679
<u>WESTERN DIVISION</u>							
Wheat	1,512,020	73,019	1,585,039	2,205,750	1,895,622	81,248	1,976,870
Oats	228,603	48,502	277,105	437,868	458,625	3,722	462,347
Corn	2,120	417	2,537	2,708	7,907	1,009	8,916
Barley	10,955	15,201	26,156	31,489	27,560	9,060	36,620
Buckwheat	-	-	-	-	-	-	-
Mixed Grain	9	101,966	101,975	48,523	19	597	616
<u>DOMINION OF CANADA</u>							
Wheat	3,405,049	186,498	3,591,547	4,750,994	3,550,781	160,551	3,711,332
Oats	514,991	199,131	714,122	822,207	990,655	52,065	1,042,721
Corn	114,903	144,916	259,819	313,495	149,872	44,641	194,513
Barley	39,031	59,927	98,958	68,408	73,733	28,945	102,678
Buckwheat	-	6,711	6,711	5,574	7,493	4,065	11,558
Mixed Grain	43,575	1,608,258	1,651,833	1,112,439	935	28,360	29,295

MILLINGS

The following table shows the production from wheat and coarse grains ground in merchant and custom mills in Canada for the month of April, 1938, according to divisions, with comparative totals for the same month last year and stocks on hand at April 30, 1938:-

Products	Unit of Measure	Production from Grindings				Stocks on hand April 30, 1938.
		Eastern Division	Western Division	Total April, 1938	Total April, 1937	
<u>Wheat Flour</u>						
Manitoba Sp. P. No. 1	Barrels	166,965	104,890	271,855	344,765	281,800
Manitoba Sp. P. No. 2	"	98,268	105,960	204,228	331,110	149,107
Ontario Winter Straight	"	63,411	-	63,411	54,089	20,778
All other	"	102,424	128,716	231,140	283,742	486,394
Total Flour	"	431,068	339,566	770,634	1,013,706	938,079
<u>Sundry Cereals</u>						
Low Grade or Feed Flour	Barrels	12,654	10,994	23,648	37,858	29,437
Bran	Tons	7,396	5,126	12,522	16,986	3,398
Shorts	"	6,710	5,169	11,879	17,005	4,563
Middlings	"	1,982	1,359	3,341	4,236	3,010
All Other Offal*	"	4,163	1,445	5,608	5,989	2,024
Oatmeal	Pounds	515,121	204,138	719,259	580,435	929,727
Rolled Oats	"	3,168,600	2,971,323	6,139,923	8,354,544	4,864,087
Corn Flour and Meal	"	2,395,008	-	2,395,008	1,923,176	455,694
Barley, Pot and Pearl	"	110,054	66,444	176,498	213,504	221,535
Buckwheat Flour	"	108,532	-	108,532	90,528	37,387
<u>Ground Feed</u>						
Ground Oats	Pounds	6,477,812	2,616,378	9,094,190	9,198,532	1,089,818
Cracked Corn	"	6,913,962	142,124	7,056,086	10,325,936	675,255
Ground Barley	"	3,184,544	1,113,694	4,298,238	2,786,795	916,230
Mixed Grain	"	68,799,712	4,521,367	73,321,079	49,704,291	358,946

* Including Coarse Grain Offal.

Mill production of flour for the month of April, 1938 amounted to 794,282 barrels, which was the lowest production figure for this month since 1920. The low production recorded for April, 1920 amounted to 372,058 barrels, while the high production for April since that period was in 1929 and amounted to 1,599,331 barrels. The comparative figure for the same month last year was 1,051,564 barrels. Offal production lowered accordingly from April last year with bran 12,522 (16,986) tons, shorts 11,879 (17,005) tons and middlings 3,341 (4,236) tons.

Cereal production for April, 1938 was as follows with figures for the same month last year in brackets and the quantities in pounds: Oatmeal, 719,259 (580,435); Rolled Oats, 6,139,923 (8,354,544); Corn Flour and Meal, 2,395,008 (1,923,176); Pot and Pearl Barley, 176,498 (213,504); and Buckwheat Flour 108,532 (90,528).

Animal feed production for April, 1938 was firm with ground barley and mixed grain increased in volume over the same month a year ago. The items were as follows: Ground Oats, 9,094,190 (9,198,532) pounds; Cracked Corn, 7,056,086 (10,325,936) pounds; Ground Barley, 4,298,238 (2,786,795) pounds; and Mixed Grain, 73,321,079 (49,704,291) pounds.

Total flour stocks for the month of April, 1938 amounted to 967,516 barrels compared with 1,132,746 barrels for the same month last year and 1,082,707 barrels for the previous month.

SUMMARY OF MILL GRINDINGS

The following table summarizes the mill grind of wheat, oats, corn, barley and mixed grain for the first nine months of the crop year 1937-38, with comparative figures for 1936-37:-

Months	Wheat	Oats	Corn	Barley	Mixed Grain
(Bushels)					
August, 1937	4,712,746	837,433	231,643	85,601	714,113
September	6,418,235	1,128,172	219,842	130,936	1,241,096
October	6,626,888	1,291,496	306,272	135,337	1,460,519
November	6,473,672	1,522,321	247,907	139,232	1,711,986
December	4,552,164	1,191,595	225,138	124,409	1,747,553
January, 1938	4,137,413	1,088,788	222,147	108,179	1,578,220
February	3,819,153	1,042,447	235,305	133,310	1,828,161
March	4,498,940	945,541	279,028	115,917	1,610,123
April	3,591,547	714,122	259,819	98,958	1,651,833
TOTAL	44,830,758	9,761,915	2,227,101	1,071,879	13,543,604
TOTAL LAST YEAR	51,055,926	9,201,622	2,590,412	834,596	12,267,970

SUMMARY OF MILL PRODUCTION

The following table summarizes the production of wheat flour, oatmeal, rolled oats and corn flour and meal for the first nine months of the crop year 1937-38, including percentage of operation and wheat flour exports, with comparative figures for 1936-37:

Months	Wheat Flour		Oatmeal	Rollled Oats	Corn Flour and Meal	Wheat Flour Exported
	Percentage of Operation	Quantity Barrels	Pounds	Pounds	Pounds	Barrels
August, 1937	44.0	1,042,949	473,546	10,219,290	1,993,480	288,608
September	61.5	1,437,586	838,850	13,546,438	2,128,854	306,655
October	63.9	1,489,185	688,108	15,747,667	2,476,304	336,478
November	62.2	1,449,419	1,039,574	17,451,906	2,292,148	405,921
December	42.1	1,010,971	1,085,780	13,627,225	1,738,544	337,678
January, 1938	38.7	921,285	830,502	11,770,834	2,214,502	295,776
February	38.4	849,228	723,038	10,731,207	1,729,202	272,488
March	41.1	999,387	579,750	9,995,402	2,208,412	301,735
April	35.5	794,282	719,259	6,139,923	2,395,008	184,703
TOTAL		9,994,292	6,978,407	109,229,892	19,176,454	2,730,042
TOTAL LAST YEAR		11,288,281	6,307,305	104,415,039	20,992,200	3,451,840

The following table shows the manufacture of barley, pot and pearl, and meal for the calendar years 1932 to 1937:

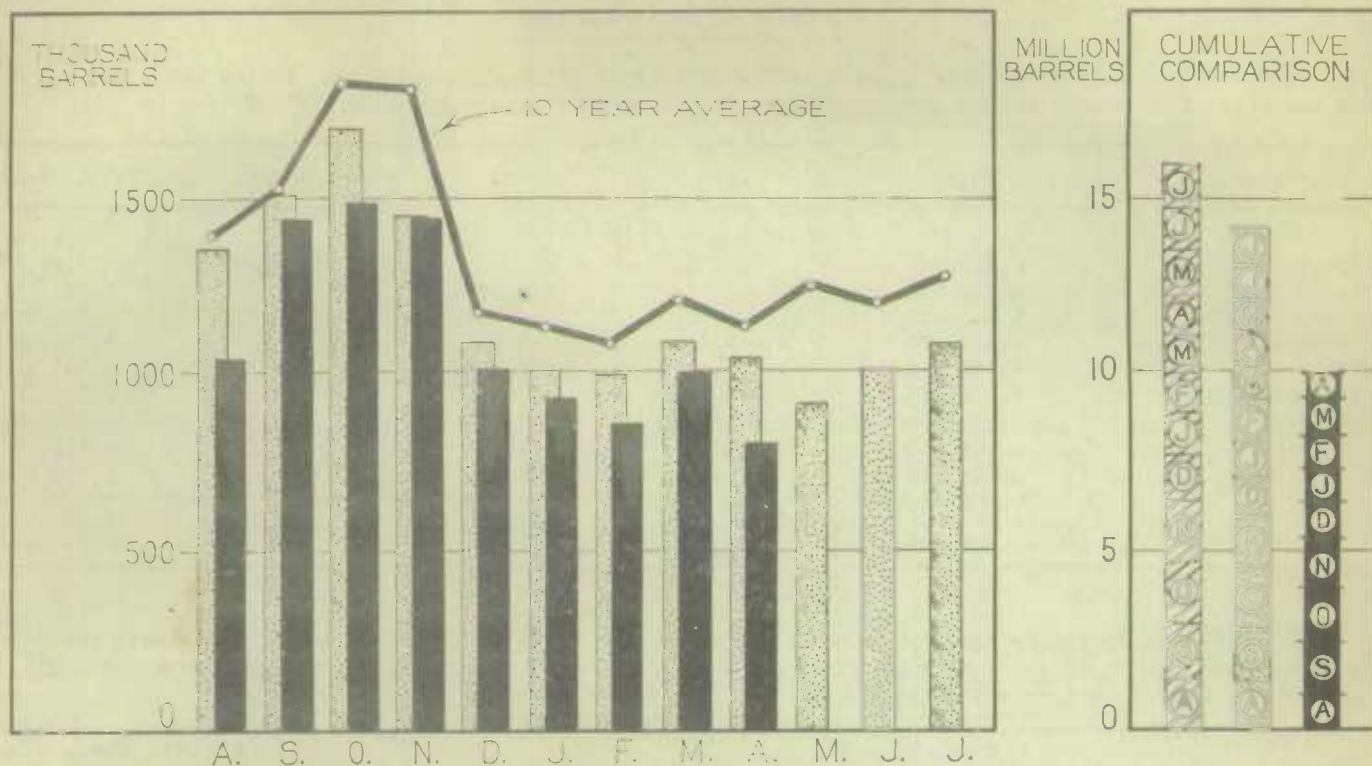
Months	1932	1933	1934	1935	1936	1937*
(Pounds)						
January	300,112	228,858	288,703	226,986	265,697	251,218
February	281,801	251,615	363,630	272,738	266,167	280,288
March	401,274	332,808	141,738	170,270	244,248	302,190
April	244,311	242,228	91,728	110,691	193,633	213,304
May	125,467	191,100	104,860	166,080	87,283	163,278
June	86,182	126,028	40,084	98,931	232,447	90,752
July	133,460	54,537	145,129	121,237	95,070	64,876
August	350,896	119,920	150,381	144,350	229,543	189,140
September	329,123	229,744	206,306	276,110	265,560	451,792
October	404,710	371,841	282,420	389,042	389,492	563,411
November	451,146	328,831	247,165	363,638	301,707	523,859
December	254,357	189,123	140,994	213,490	294,766	387,149
T O T A L	3,362,839	2,666,633	2,203,138	2,553,563	2,865,613	3,481,257

* Preliminary figures from August to December, 1937.

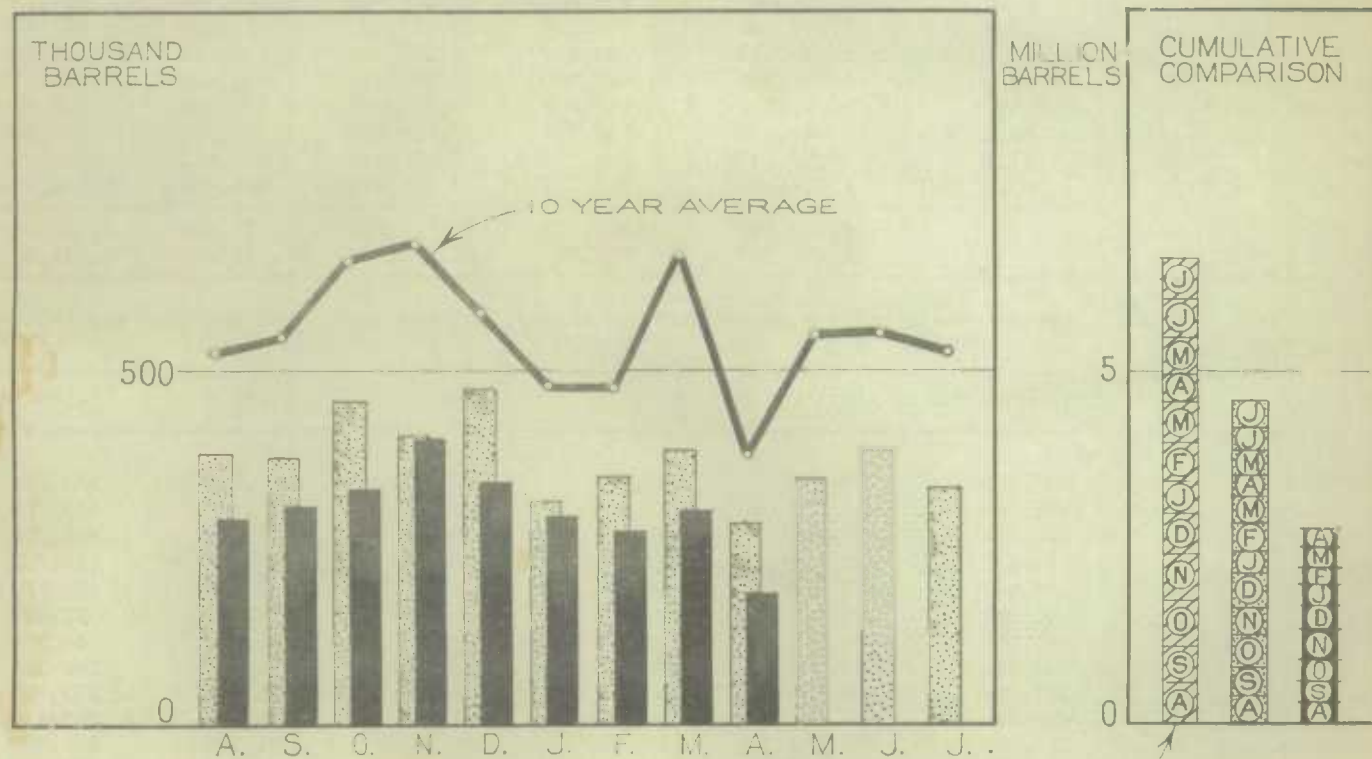


1010633776

WHEAT FLOUR PRODUCTION



WHEAT FLOUR EXPORT



LEGEND

