

Published by Authority of the HON. W. D. EULER,  
Minister of Trade and Commerce

DOMINION BUREAU OF STATISTICS - CANADA  
AGRICULTURAL BRANCH

DOMINION BUREAU OF  
STATISTICS  
FEB 18 1940  
LIBRARY

Dominion Statistician:  
Acting Chief, Agricultural Branch:

R. H. Coats, LL.D., F.R.S.C.  
W. Dougan.

CANADIAN MILLING STATISTICS

December, 1939.

Ottawa, Canada, February 1, 1940.- The Dominion Bureau of Statistics published herewith preliminary statistics of grains ground and products for December, 1939, with comparisons for the previous year, inventory for the month and wheat flour export. The daily capacity reporting for December 1939, amounted to 91,624 barrels.

SUMMARY

During the month of December, 1939, 7,202,927 bushels of wheat were ground in Canadian mills compared with 4,741,974 bushels for the corresponding month of the previous year. Coarse grains were higher than for December 1938.

Grains ground for the month of December, 1939 are shown in bushels with comparative figures for the same month of the previous year in brackets: Wheat 7,202,927 (4,741,974); Oats 1,696,461 (1,088,190); Corn 335,949 (325,933); Barley 168,450 (120,745); Buckwheat 22,448 (19,502); and Mixed Grain 3,078,599 (2,714,619).

Mill stocks of wheat on December 31, 1939 amounted to 6,755,211 bushels, while for the same month in 1938, the amount was 4,893,152 bushels.

Flour production in December, 1939 amounted to 1,599,966 barrels compared with 1,052,002 barrels for the same month last year. Exports of flour in December 1939 amounted to 902,714 barrels compared with 365,085 barrels in December 1938.

MILL GRINDINGS

The following table shows the amount of wheat, oats, corn, barley, buckwheat and mixed grain milled for the month of December 1939, by merchant and custom mills in Canada according to divisions, with comparative totals for the same month last year and stocks on hand at December 31, 1939 (in bushels):-

Grain	Quantities Ground				Stocks on hand, December 31, 1939		
	Merchant Mills	Custom Mills	Total December, 1939	Total December, 1938	Merchant Mills	Custom Mills	Total December 31, 1939
<b>EASTERN DIVISION</b>							
Wheat -							
Manitoba Spring .....	2,913,897	-	2,913,897	1,983,004	1,995,979	-	1,995,979
Ontario Winter .....	375,322	-	375,322	252,648	409,807	-	409,807
Durum .....	107,927	-	107,927	78,051	36,037	-	36,037
Garnet .....	341,332	-	341,332	72,661	169,074	-	169,074
United States and All Other .....	362	152,226	152,588	209,689	7,671	219,922	227,593
Total Wheat .....	3,738,840	152,226	3,891,066	2,596,053	2,618,568	219,922	2,838,490
Oats .....	654,282	259,067	913,349	698,721	607,218	136,381	743,599
Corn .....	89,632	242,717	332,349	323,680	341,202	108,741	449,943
Barley .....	20,073	77,149	97,222	86,286	65,856	34,780	100,636
Buckwheat .....	-	22,448	22,448	19,502	12,700	7,250	19,950
Mixed Grain .....	41,644	2,936,644	2,980,288	2,602,711	5,537	51,599	57,146
<b>WESTERN DIVISION</b>							
Wheat -							
Manitoba Spring .....	3,014,490	-	3,014,490	1,938,524	3,387,081	-	3,387,081
Ontario Winter .....	-	-	-	-	-	-	-
Durum .....	7,280	-	7,280	13,469	2,538	-	2,538
Garnet .....	85,008	-	85,008	49,039	285,035	-	285,035
United States and All Other .....	8,951	196,132	205,083	144,889	26,191	215,876	242,067
Total Wheat .....	3,115,729	196,132	3,311,861	2,145,921	3,700,845	215,876	3,916,721
Oats .....	698,704	84,408	783,112	389,469	578,703	11,878	590,581
Corn .....	2,764	836	3,600	2,253	11,041	1,275	12,316
Barley .....	25,960	45,268	71,228	34,459	63,877	6,903	70,780
Buckwheat .....	-	-	-	-	-	-	-
Mixed Grain .....	-	98,311	98,311	111,906	-	848	848
<b>DOMINION OF CANADA</b>							
Wheat -							
Manitoba Spring .....	5,928,387	-	5,928,387	3,921,528	5,383,060	-	5,383,060
Ontario Winter .....	375,322	-	375,322	252,648	409,807	-	409,807
Durum .....	115,207	-	115,207	91,520	38,575	-	38,575
Garnet .....	426,340	-	426,340	121,700	454,109	-	454,109
United States and All Other .....	9,315	348,358	357,671	354,578	33,862	435,798	469,660
Total Wheat .....	6,854,569	348,358	7,202,927	4,741,974	6,319,413	435,798	6,755,211
Oats .....	1,352,986	343,475	1,696,461	1,088,190	1,185,921	148,259	1,334,180
Corn .....	92,396	243,553	335,949	325,933	353,243	110,016	463,259
Barley .....	46,033	122,417	168,450	120,745	129,733	41,683	171,416
Buckwheat .....	-	22,448	22,448	19,502	12,700	7,250	19,950
Mixed Grain .....	41,644	3,036,955	3,078,599	2,714,619	5,537	52,447	57,984

# MILLINGS

The following table shows the production from wheat and coarse grains ground in merchant and custom mills in Canada for the month of December 1939, according to divisions, with comparative totals for the same month last year and stocks on hand at December 31, 1939:-

Products	Unit of Measure	Production from Grindings				Stocks on hand December 31, 1939
		Eastern Division	Western Division	Total December, 1939	Total December, 1938	
<u>Wheat Flour</u>						
Manitoba Sp. P. No. 1 .....	Barrels	326,812	109,979	436,791	349,416	328,556
Manitoba Sp. P. No. 2 .....	"	171,614	294,908	466,522	290,850	161,865
Ontario Winter Straight .....	"	79,531	-	79,531	67,536	19,622
All other .....	"	274,113	290,005	564,118	298,277	456,194
Total Flour .....	"	852,070	694,892	1,546,962	1,006,079	966,237
<u>Sundry Cereals</u>						
Low Grade Flour .....	Barrels	11,864	18,289	30,153	31,053	15,996
Feed Flour .....	"	9,881	12,970	22,851	14,870	5,280
Bran .....	Tons	13,817	11,398	25,215	16,162	5,543
Shorts .....	"	11,424	13,148	24,572	15,892	8,906
Middlings .....	"	6,020	2,342	8,362	5,725	2,827
All Other Offal* .....	"	6,212	5,163	11,375	6,266	4,321
Oatmeal .....	Pounds	1,606,112	3,232,552	4,838,664	1,953,298	2,067,026
Rolled Oats .....	"	9,395,928	8,199,154	17,595,082	10,570,982	11,271,508
Corn Flour and Meal .....	"	1,240,680	-	1,240,680	1,980,188	562,206
Barley, Pot and Pearl .....	"	101,822	215,257	317,079	291,558	419,897
Buckwheat Flour .....	"	384,258	-	384,258	315,444	59,471
<u>Ground Feed</u>						
Ground Oats .....	Pounds	9,523,866	3,705,865	13,229,731	10,759,748	1,460,257
Cracked Corn .....	"	10,229,196	201,648	10,430,844	13,687,915	757,340
Ground Barley .....	"	4,502,838	2,923,429	7,426,267	4,891,661	556,698
Mixed Grain .....	"	133,018,986	4,266,185	137,285,171	122,762,401	269,357
* Including Coarse Grain Offal						

\* Including Coarse Grain Offal

Flour production for the month of December 1939 amounted to 1,599,966 barrels compared with 1,052,002 barrels for the same month last year. This has been the highest December production since 1928, when the amount was 1,651,319 barrels. Total production for the first five months of the present crop year amounted to 8,959,217 barrels compared with 7,306,212 barrels in the same period last year and 9,442,291 barrels in the five-month period of 1928-29. It is apparent that the Canadian wheat crop of 1939, estimated at 489,623,000 bushels, second largest on record, and exceeded only by the production of 1928, has been the governing factor in the improved flour production of the present crop year. This, rather than the war, has influenced the Canadian flour milling industry although it is interesting to note that exports of flour for December amounted to 902,714 barrels, the highest monthly figure since June 1929.

Millfeeds for December 1939 increased over the previous year with bran 25,215 (16,162) tons, shorts 24,572 (15,892) tons and middlings 8,362 (5,725) tons.

Cereal production for December 1939 was as follows with figures for the same month last year in brackets and the quantities in pounds: Oatmeal, 4,838,664 (1,953,298); Rolled Oats, 17,595,082 (10,570,982); Corn Flour and Meal, 1,240,680 (1,980,188); Pot and Pearl Barley, 317,079 (291,558); and Buckwheat Flour, 384,258 (315,444). Oatmeal and rolled oats show a decided improvement in production over the same month a year ago.

Animal feed production continued firm during December 1939 and compared as follows with the same month in 1938: Ground Oats, 13,229,731 (10,759,748) pounds; Cracked Corn, 10,430,844 (13,687,915) pounds; Ground Barley 7,426,267 (4,891,661) pounds and Mixed Grain, 137,285,171 (122,762,401) pounds.

Total flour stocks for the month of December 1939 amounted to 987,513 barrels compared with 1,147,926 barrels for the same month last year and 1,092,703 barrels for the previous month.



### SUMMARY OF MILL GRINDINGS

The following table summarizes the mill grind of wheat, oats, corn, barley and mixed grain for the first five months of the crop year 1939-40, with comparative figures for 1938-39:-

Months	Wheat	Oats	Corn	Barley	Mixed Grains
(bushels)					
August, 1939 .....	6,383,258	1,095,328	213,394	119,095	1,361,999
September .....	8,894,675	1,795,844	318,184	172,562	1,764,365
October .....	9,383,192	1,683,187	282,950	167,169	2,270,654
November .....	8,855,723	1,658,254	250,074	196,822	2,759,117
December .....	7,202,927	1,696,461	335,949	168,450	3,078,599
T O T A L S .....	40,719,775	7,929,074	1,400,551	824,098	11,234,734
TOTALS LAST YEAR .....	32,657,406	6,787,130	1,328,250	659,010	9,142,469

### SUMMARY OF MILL PRODUCTION

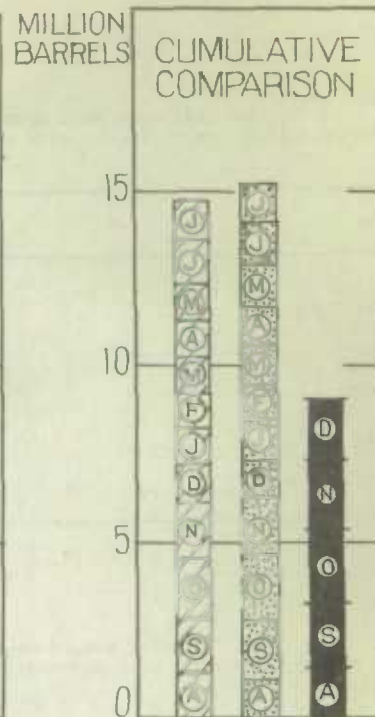
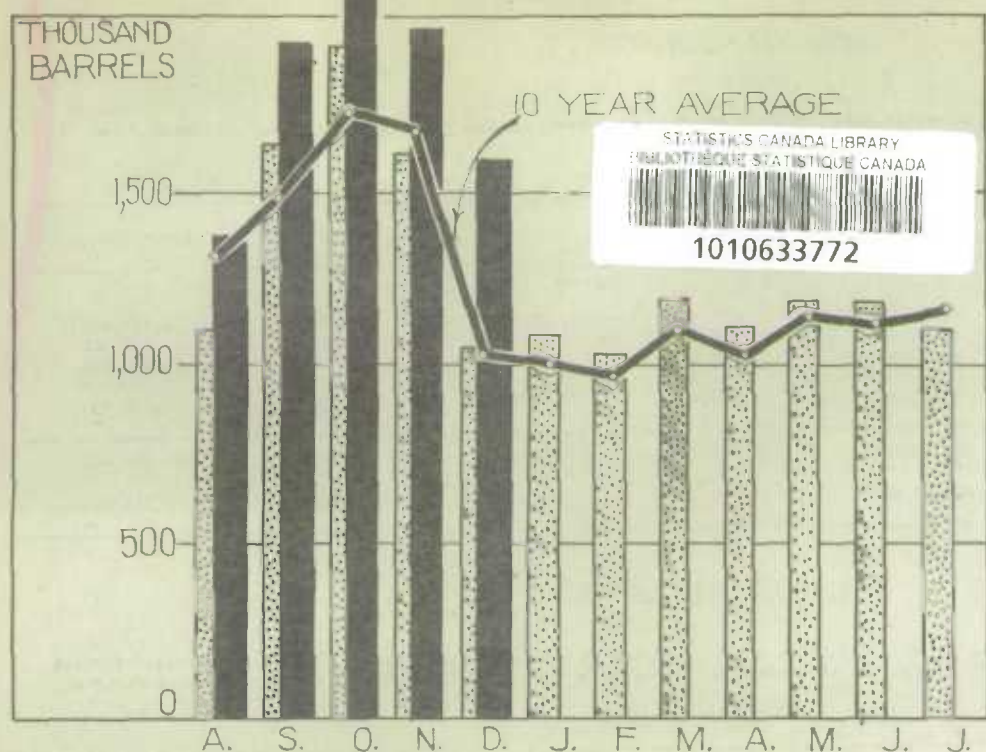
The following table summarizes the production of wheat flour, oatmeal, rolled oats and corn flour and meal for the first five months of the crop year 1939-40, including percentage of operation and wheat flour exports, with comparative figures for 1938-39:-

Months	Wheat Flour		Oatmeal	Rollod Oats	Corn Flour and Meal	Wheat Flour Exported
	Percentage of operation	Quantity Barrels	Pounds	Pounds	Pounds	Barrels
August, 1939 .....	59.7	1,382,158	514,718	13,885,982	2,270,098	379,276
September .....	87.3	1,927,102	803,604	24,276,286	2,980,400	416,553
October .....	94.1	2,089,562	731,379	21,417,018	3,158,488	444,144
November .....	86.6	1,960,429	2,873,646	18,429,532	3,404,476	572,810
December .....	70.8	1,599,966	4,838,664	17,595,082	1,240,680	902,714
T O T A L S .....		8,959,217	9,762,011	95,603,900	13,054,142	2,715,497
TOTALS LAST YEAR .....		7,306,212	7,545,292	79,398,609	13,090,985	1,977,570

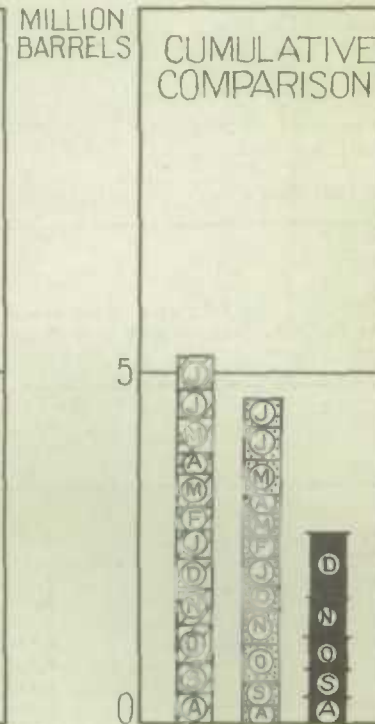
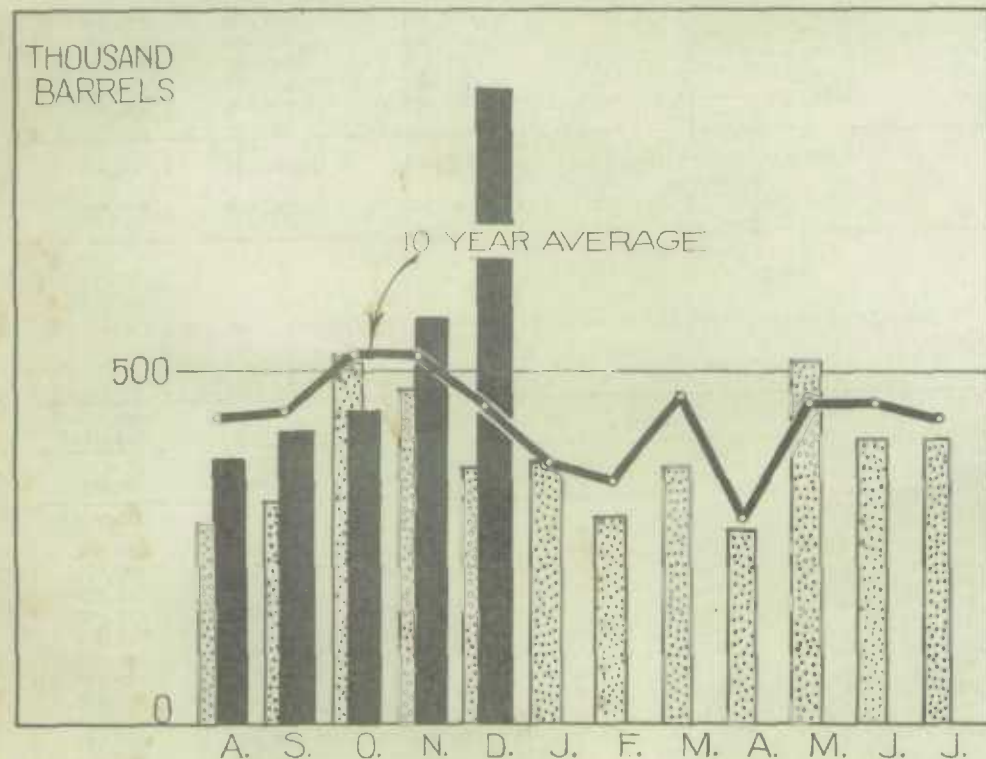
The following table gives the quantity of wheat ground and wheat flour produced, by divisions, and total flour exports for the calendar year 1939 (Preliminary):-

Months	Wheat Ground			Wheat Flour Production			Wheat Flour Exported
	Eastern Division	Western Division	Total Canada	Eastern Division	Western Division	Total Canada	Total Canada
(Bushels)				(Barrels)			(Barrels)
January .....	2,472,586	2,503,639	4,976,225	543,273	554,549	1,097,822	379,538
February .....	2,414,938	2,265,366	4,680,304	532,842	504,624	1,037,466	290,766
March .....	2,874,726	2,537,107	5,411,833	631,951	561,766	1,193,717	360,752
April .....	2,726,270	2,374,648	5,100,918	596,806	516,887	1,113,693	275,275
May .....	2,948,528	2,514,225	5,462,753	644,973	546,805	1,191,778	515,778
June .....	2,798,091	2,684,439	5,482,530	609,719	578,156	1,187,875	401,189
July .....	2,515,789	2,656,112	5,171,901	550,092	555,410	1,105,502	403,377
August .....	3,082,817	3,300,441	6,383,258	673,238	708,920	1,382,158	379,276
September .....	3,934,223	4,960,452	8,894,675	869,363	1,057,739	1,927,102	416,553
October .....	4,666,303	4,716,889	9,383,192	1,046,589	1,042,973	2,089,562	444,144
November .....	4,194,633	4,661,090	8,855,723	943,239	1,017,190	1,960,429	572,810
December .....	3,891,066	3,311,861	7,202,927	873,815	726,151	1,599,966	902,714
TOTAL, 1939 .....	38,519,970	38,486,269	77,006,239	8,515,900	8,371,170	16,887,070	5,342,172
TOTAL, 1938 .....	31,004,267	30,669,507	61,673,774	6,917,920	6,819,745	13,737,665	3,911,886

# WHEAT FLOUR PRODUCTION



# WHEAT FLOUR EXPORT



## LEGEND

