

DOMINION BUREAU OF STATISTICS - CANADA
AGRICULTURAL BRANCHDominion Statistician:
Acting Chief, Agricultural Branch:R. H. Coats, LL.D., F.R.S.C.
W. Dougan.

CANADIAN MILLING STATISTICS

June, 1939

Ottawa, Canada, August 3, 1939.- The Dominion Bureau of Statistics publishes herewith, preliminary statistics of grains ground and products for June, 1939, with comparisons for the previous year, inventory for the month and wheat flour exports.

The daily capacity reporting for June, 1939 amounted to 93,981 barrels.

SUMMARY

During the month of June, 1939 5,482,530 bushels of wheat were ground in Canadian mills compared with 4,397,902 bushels for the corresponding month of the previous year. In the coarse grain group, oats, barley and mixed grain were higher than for June last year, while corn and buckwheat were lower.

Grains ground for the month of June, 1939 are shown in bushels with comparative figures for the same month of the previous year in brackets: Wheat, 5,482,530 (4,397,902); Oats 842,494 (688,291); Corn 238,848 (389,359); Barley 115,462 (77,166); Buckwheat 4,551 (6,228); and Mixed Grain 1,323,440 (861,330).

Mill stocks of wheat on June 30, 1939 amounted to 5,058,809 bushels, while for the same month in 1938 the amount was 1,838,035 bushels.

Flour production in June, 1939 amounted to 1,187,875 barrels compared with 969,207 barrels for the same month last year. Exports of flour in June, 1939 amounted to 401,189 barrels compared with 299,503 barrels in June, 1938.

MILL GRINDINGS

The following table shows the amount of wheat, oats, corn, barley, buckwheat and mixed grain milled for the month of June, 1939, by merchant and custom mills in Canada according to divisions, with comparative totals for the same month last year and stocks on hand at June 30, 1939 (in bushels):-

Grain	Quantities Ground				Stocks on hand, June 30, 1939		
	Merchant Mills	Custom Mills	Total June, 1939	Total June, 1938	Merchant Mills	Custom Mills	Total June 30, 1939
EASTERN DIVISION							
Wheat -							
Manitoba Spring.....	2,259,275	-	2,259,275	Grades	928,957	-	928,957
Ontario Winter.....	201,868	-	201,868		213,159	-	213,159
Durum.....	32,175	-	32,175	Not	36,768	-	36,768
Garnet.....	27,111	-	27,111		7,993	-	7,993
United States and All Other.....	136,154	141,508	277,662	Available	47,984	188,847	236,831
Total Wheat.....	2,656,583	141,508	2,798,091	2,363,715	1,234,861	188,847	1,423,708
Oats.....	330,940	121,147	452,087	367,638	560,774	67,571	628,345
Corn.....	111,831	123,212	235,043	386,790	359,807	90,339	450,146
Barley.....	30,056	45,120	75,176	49,313	59,446	23,355	82,801
Buckwheat.....	-	4,551	4,551	6,228	7,765	4,826	12,591
Mixed Grain.....	26,592	1,240,943	1,267,535	804,912	1,816	14,470	16,286
WESTERN DIVISION							
Wheat -							
Manitoba Spring.....	2,331,864	-	2,331,864	Grades	3,260,715	-	3,260,715
Ontario Winter.....	-	-	-		-	-	-
Durum.....	19,520	-	19,520	Not	34,285	-	34,285
Garnet.....	237,382	-	237,382		240,542	-	240,542
United States and All Other.....	10,049	85,624	95,673	Available	10,676	88,883	99,559
Total Wheat.....	2,598,815	85,624	2,684,439	2,034,186	3,546,218	88,883	3,635,101
Oats.....	321,171	69,236	390,407	320,653	645,130	6,593	651,723
Corn.....	2,990	815	3,805	2,569	24,569	504	25,073
Barley.....	14,167	26,119	40,286	27,853	37,972	3,803	41,775
Buckwheat.....	-	-	-	-	-	-	-
Mixed Grain.....	-	55,905	55,905	56,418	-	958	958
DOMINION OF CANADA							
Wheat -							
Manitoba Spring.....	4,591,139	-	4,591,139	Grades	4,189,672	-	4,189,672
Ontario Winter.....	201,868	-	201,868		213,159	-	213,159
Durum.....	51,695	-	51,695	Not	71,053	-	71,053
Garnet.....	264,493	-	264,493		248,535	-	248,535
United States and All Other.....	146,203	227,132	373,335	Available	58,660	277,730	336,390
Total Wheat.....	5,255,398	227,132	5,482,530	4,397,902	4,781,079	277,730	5,058,809
Oats.....	652,111	190,383	842,494	688,291	1,205,904	74,164	1,280,068
Corn.....	114,821	124,027	238,848	389,359	364,376	90,843	475,219
Barley.....	44,223	71,239	115,462	77,166	97,418	27,158	124,576
Buckwheat.....	-	4,551	4,551	6,228	7,765	4,826	12,591
Mixed Grain.....	26,592	1,296,848	1,323,440	861,330	1,816	15,428	17,244

MILLINGS

The following table shows the production from wheat and coarse grains ground in merchant and custom mills in Canada for the month of June, 1939, according to divisions, with comparative totals for the same month last year and stocks on hand at June 30, 1939:-

Products	Unit of Measure	Production from Grindings				Stocks on hand June 30, 1939
		Eastern Division	Western Division	Total June, 1939	Total June, 1938	
<u>Wheat Flour</u>						
Manitoba Sp. P. No. 1	Barrels	208,331	161,743	370,074	373,419	379,332
Manitoba Sp. P. No. 2	"	168,138	179,733	347,871	247,067	188,121
Ontario Winter Straight...	"	66,441	-	66,441	69,369	28,096
All Other.....	"	128,444	206,508	334,952	236,275	445,756
Total Flour.....	"	571,354	547,984	1,119,338	926,130	1,041,305
<u>Sundry Cereals</u>						
Low Grade Flour.....	Barrels	27,862	10,697	38,559	(43,077	16,312
Feed Flour.....	"	10,503	19,475	29,978	(18,287
Bran.....	Tons	9,590	8,143	17,733	14,843	4,348
Shorts.....	"	9,993	9,591	19,584	14,819	4,768
Middlings.....	"	4,265	4,452	8,717	5,160	3,381
All Other Offal*.....	"	3,923	1,900	5,823	6,653	2,686
Oatmeal.....	Pounds	134,148	260,442	394,590	628,374	688,565
Rolled Oats	"	4,331,150	4,495,858	8,827,008	7,220,012	5,662,318
Corn Flour and Meal.....	"	2,518,412	-	2,518,412	3,753,470	555,197
Barley, Pot and Pearl.....	"	239,912	33,026	272,938	152,292	260,240
Buckwheat Flour.....	"	73,036	-	73,036	100,106	2,898
<u>Ground Feed</u>						
Ground Oats.....	Pounds	5,811,235	3,518,451	9,329,686	6,300,653	638,270
Cracked Corn.....	"	6,585,727	213,091	6,798,818	8,905,375	971,901
Ground Barley.....	"	2,890,699	1,862,323	4,753,022	3,228,092	494,600
Mixed Grain.....	"	56,847,226	2,506,121	59,353,347	38,261,695	298,697

* Including Coarse Grain Offal

* Including Coarse Grain Offal

Flour production for the month of June, 1939 amounted to 1,187,875 barrels, well above the amount in June last year when 969,207 barrels were produced. In the eleven months of the crop year ending with June, Canadian mills produced 14,128,563 barrels of flour compared with 11,941,239 barrels in the corresponding period of the previous year.

Export shipments of flour for June advanced to 401,189 barrels compared with 299,503 barrels for the same month last year, with total shipments for the eleven months amounting to 4,200,868 barrels as against 3,326,671 barrels.

Wheat offal for June, 1939 advanced over the same month last year with bran 17,733 (14,843) tons, shorts 19,584 (14,819) tons, and middlings, 8,717 (5,160) tons.

Cereal production for June, 1939 was as follows with figures for the same month last year in brackets and the quantities in pounds: Oatmeal, 394,590 (628,374); Rolled Oats, 8,827,008 (7,220,012); Corn Flour and Meal, 2,518,412 (3,753,470); Pot and Pearl Barley, 272,938 (152,292); and Buckwheat Flour, 73,036 (100,106).

Animal feed products for June, 1939 recorded increases over the same month a year ago in all except cracked corn, comparing as follows: Ground Oats, 9,329,686 (6,300,653) pounds; Cracked Corn, 6,798,818 (8,905,375) pounds; Ground Barley, 4,753,022 (3,228,092) pounds; and Mixed Grain, 59,353,347 (38,261,695) pounds.

Total flour stocks for the month of June, 1939 amounted to 1,075,904 barrels compared with 894,297 barrels for the same month last year and 1,136,224 barrels for the previous month.

- 3 - SUMMARY OF MILL GRINDINGS

The following table summarizes the mill grind of wheat, oats, corn, barley and mixed grain for eleven months of the crop year 1938-39, with comparative figures for 1937-38:

Months	Wheat	Oats	Corn	Barley	Mixed Grains
	(bushels)				
August, 1938.....	4,940,255	959,110	252,749	97,989	1,084,736
September.....	7,266,336	1,271,323	230,597	123,227	1,430,305
October.....	8,531,847	1,851,679	272,930	138,263	1,643,733
November.....	7,176,994	1,616,828	245,941	178,786	2,269,076
December.....	4,741,974	1,088,190	325,933	120,745	2,714,619
January, 1939.....	4,976,225	1,164,676	255,181	128,494	2,248,195
February.....	4,680,304	971,295	228,337	131,048	2,007,207
March.....	5,411,833	1,112,025	252,736	114,985	2,129,586
April.....	5,100,918	842,286	217,332	103,326	1,905,923
May.....	5,462,753	768,935	215,217	99,452	1,653,750
June.....	5,482,530	842,494	238,848	115,462	1,323,440
T O T A L S	63,771,969	12,488,841	2,735,901	1,351,777	20,410,570
TOTALS LAST YEAR.....	53,645,569	11,094,808	2,805,144	1,222,576	15,506,226

SUMMARY OF MILL PRODUCTION

The following table summarizes the production of wheat flour, oatmeal, rolled oats and corn flour and meal for eleven months of the crop year 1938-39, including percentage of operation and wheat flour exports, with comparative figures for 1937-38:-

Months	Wheat Flour		Oatmeal	Rollled Oats	Corn Flour and Meal	Wheat Flour Exported
	Percentage of operation	Quantity Barrels	Pounds	Pounds	Pounds	Barrels
August, 1938.....	45.5	1,103,037	975,578	10,905,829	2,928,338	286,270
September.....	71.7	1,639,231	748,938	15,425,367	2,581,438	319,739
October.....	83.6	1,906,385	1,566,732	23,547,039	3,063,773	528,601
November.....	71.5	1,605,557	2,300,746	18,949,392	2,537,248	477,875
December.....	45.6	1,052,002	1,953,298	10,570,982	1,980,188	365,085
January, 1939.....	50.1	1,097,822	1,961,424	11,875,262	2,945,808	379,538
February.....	49.1	1,037,466	872,808	11,607,414	1,082,798	290,766
March.....	50.1	1,193,717	601,190	11,855,986	2,624,648	360,752
April.....	53.3	1,113,693	480,674	6,999,658	1,949,842	275,275
May.....	54.5	1,191,778	327,371	7,832,407	1,627,538	515,778
June.....	52.5	1,187,875	394,590	8,827,008	2,518,412	401,189
T O T A L S		14,128,563	12,183,349	138,396,344	25,840,031	4,200,868
TOTALS LAST YEAR.....		11,941,239	8,048,242	122,609,271	25,975,826	3,326,671

The following table shows the production of ground oats for the calendar years 1933-38:

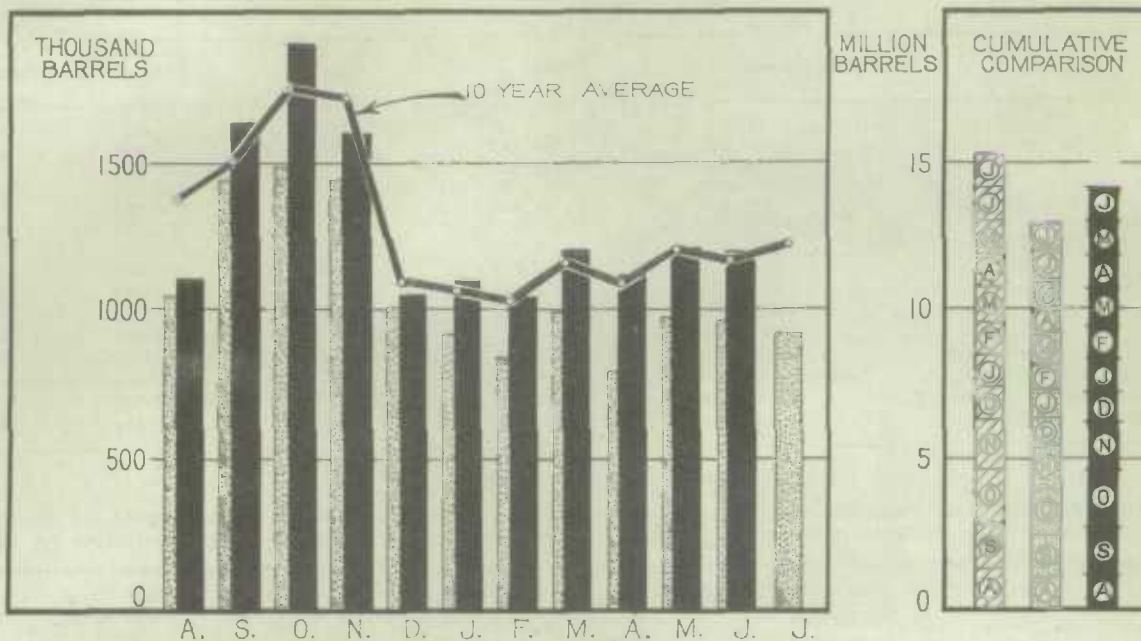
Months	1933	1934	1935	1936	1937	1938*
	(Pounds)					
January.....	7,056,256	7,394,091	7,097,044	8,232,834	9,390,540	9,905,551
February.....	6,557,917	6,819,996	6,844,063	7,650,395	8,549,677	8,709,653
March.....	8,606,818	7,942,004	7,368,595	8,167,014	9,823,046	8,864,979
April.....	7,234,551	6,965,147	7,451,039	7,659,780	8,937,714	8,963,050
May.....	6,782,935	6,617,727	6,998,026	6,057,642	7,810,027	7,288,918
June.....	5,494,107	5,664,907	5,927,378	6,480,628	6,216,677	6,036,871
July.....	4,780,054	5,143,190	5,267,690	6,550,509	5,613,135	5,672,395
August.....	5,683,792	4,784,757	5,079,645	6,693,371	6,465,518	6,510,128
September.....	6,433,728	5,727,054	6,663,434	8,388,158	8,130,560	8,095,416
October.....	8,231,522	7,624,248	8,674,143	11,037,672	10,563,219	9,006,331
November.....	9,484,840	9,084,736	10,385,521	11,681,034	11,616,874	11,576,596
December.....	6,805,018	7,489,505	8,734,270	10,815,220	9,049,416	10,759,748
T O T A L S	83,151,538	81,257,362	86,490,848	99,414,257	102,166,403	101,389,636

* Preliminary from August to December, 1938.

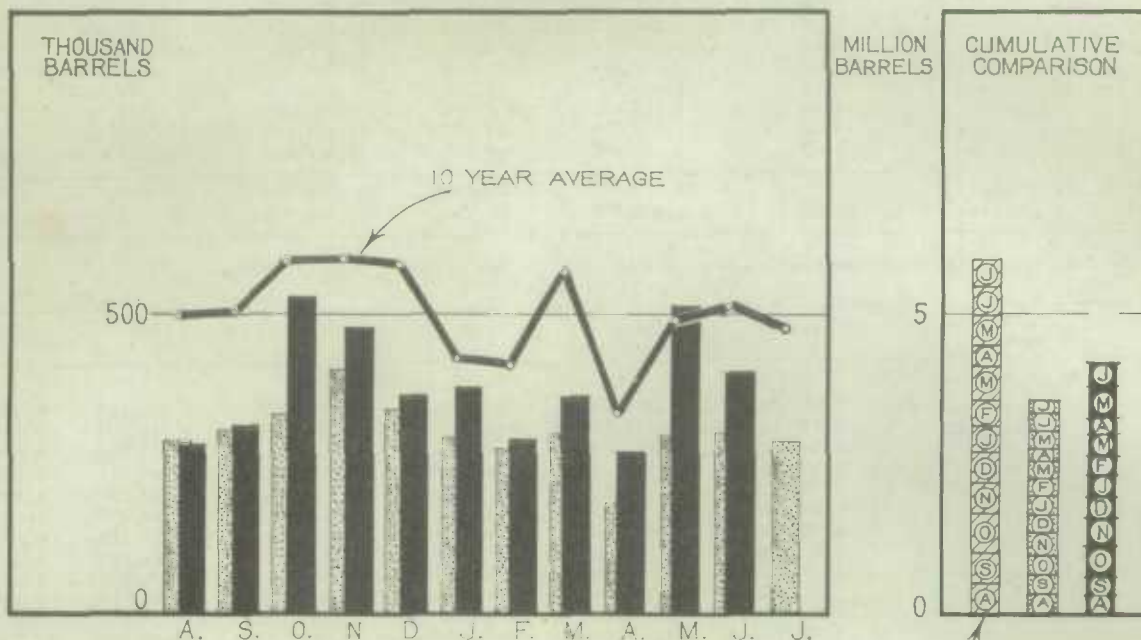


1010633766

WHEAT FLOUR PRODUCTION



WHEAT FLOUR EXPORT



LEGEND

