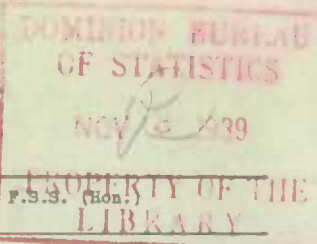


DOMINION BUREAU OF STATISTICS - CANADA
AGRICULTURAL BRANCHDominion Statistician:
Acting Chief, Agricultural Branch:R. H. Coats, LL.D., F.R.S.C., F.S.S. (Hon.)
W. Dougan.

CANADIAN MILLING STATISTICS

September, 1939.

Ottawa, Canada, November 2, 1939. The Dominion Bureau of Statistics publishes, herewith, preliminary statistics of grains ground and products for September, 1939, with comparison for the previous year, inventory for the month and wheat flour exports.

The daily capacity reporting for September, 1939, amounted to 89,506 barrels.

SUMMARY

During the month of September, 1939, 8,894,675 bushels of wheat were ground in Canadian mills compared with 7,266,336 bushels for the corresponding month of the previous year. Oats, corn, barley and mixed grain were higher than for September, 1938, while buckwheat was slightly lower.

Grains ground for the month of September, 1939 are shown in bushels with comparative figures for the same month of the previous year in brackets: Wheat 8,894,675 (7,266,336); Oats 1,795,844 (1,271,323); Corn 318,184 (230,697); Barley 172,562 (123,227) buckwheat, 8,407 (8,764); and Mixed Grain 1,764,365 (1,430,305).

Mill stocks of wheat on September 30, 1939 amounted to 4,976,099 bushels, while for the same month in 1938 the amount was 2,862,473 bushels.

Flour production in September, 1939 amounted to 1,927,102 barrels compared with 1,639,231 barrels for the same month last year. Exports of flour in September, 1939 amounted to 416,553 barrels compared with 319,739 barrels in September, 1938.

MILL GRINDINGS

The following table shows the amount of wheat, oats, corn, barley, buckwheat and mixed grain milled for the month of September, 1939, by merchant and custom mills in Canada according to divisions, with comparative totals for the same month last year and stocks on hand at September 30, 1939 (in bushels):-

Grain	Quantities Ground				Stocks on hand, September 30, 1939		
	Merchant Mills	Custom Mills	Total September, 1939	Total September, 1938	Merchant Mills	Custom Mills	Total September 30, 1939
EASTERN DIVISION							
Wheat -							
Manitoba Spring	2,981,246	-	2,981,246	2,348,549	1,255,506	-	1,255,506
Ontario Winter	558,694	-	558,694	374,670	467,072	-	467,072
Durum	87,188	-	87,188	41,743	45,891	-	45,891
Garnet	93,434	-	93,434	116,066	48,254	-	48,254
United States and All other	12,844	200,817	213,661	212,750	9,642	254,409	264,051
Total Wheat	3,733,406	200,817	3,934,223	3,093,778	1,826,365	254,409	2,080,774
Oats	844,840	195,655	1,040,495	744,811	670,439	103,623	774,062
Corn	138,386	176,180	314,566	228,127	355,711	63,129	418,840
Barley	41,253	46,630	87,883	74,471	16,471	34,875	51,346
Buckwheat	-	8,407	8,407	8,764	2,564	4,090	6,654
Mixed Grain	34,126	1,650,407	1,684,533	1,355,834	3,111	31,839	34,950
WESTERN DIVISION							
Wheat -							
Manitoba Spring	4,476,136	-	4,476,136	3,847,414	2,517,235	-	2,517,235
Ontario Winter	-	-	-	-	-	-	-
Durum	-	-	-	30,936	11,732	-	11,732
Garnet	213,803	-	213,803	65,730	147,496	-	147,496
United States and All other	22,789	247,724	270,513	228,478	17,405	201,457	218,862
Total Wheat	4,712,728	247,724	4,960,452	4,172,558	2,693,868	201,457	2,895,325
Oats	676,089	79,260	755,349	526,512	423,003	9,447	432,450
Corn	2,745	873	3,618	2,570	14,732	1,356	16,088
Barley	38,962	45,717	84,679	48,756	59,082	6,675	65,757
Buckwheat	-	-	-	-	-	-	-
Mixed Grain	14	79,818	79,832	74,471	4	1,362	1,366
DOMINION OF CANADA							
Wheat -							
Manitoba Spring	7,457,382	-	7,457,382	6,195,963	3,772,741	-	3,772,741
Ontario Winter	558,694	-	558,694	374,670	467,072	-	467,072
Durum	87,188	-	87,188	72,679	57,623	-	57,623
Garnet	307,237	-	307,237	181,796	195,750	-	195,750
United States and All other	35,633	448,541	484,174	441,228	27,047	455,866	482,913
Total Wheat	8,446,134	448,541	8,894,675	7,266,336	4,520,233	455,866	4,976,099
Oats	1,520,929	274,915	1,795,844	1,271,323	1,093,442	113,070	1,206,512
Corn	141,131	177,053	318,184	230,697	370,443	64,465	434,908
Barley	80,215	92,347	172,562	123,227	75,553	41,550	117,103
Buckwheat	-	8,407	8,407	8,764	2,564	4,090	6,654
Mixed Grain	34,140	1,730,225	1,764,365	1,430,305	3,115	33,201	36,316

Price: 50 cents a year.

MILLINGS

The following table shows the production from wheat and coarse grains ground in merchant and custom mills in Canada for the month of September, 1939, according to divisions, with comparative totals for the same month last year and stocks on hand at September 30, 1939:-

Products	Unit of Measure	Production from Grindings				Stocks on hand September 30, 1939
		Eastern Division	Western Division	Total Sept. 1939	Total Sept. 1938	
<u>Wheat Flour</u>						
Manitoba Sp. P. No. 1	Barrels	316,620	466,655	783,275	644,564	172,416
Manitoba Sp. P. No. 2	"	212,108	307,269	519,377	469,304	124,659
Ontario Winter Straight	"	119,491	-	119,491	78,272	21,179
All Other	"	187,919	223,991	411,910	376,848	313,428
Total Flour.....	"	836,138	997,915	1,834,053	1,568,988	631,682
<u>Sundry Cereals</u>						
Low Grade Flour	Barrels	20,911	44,814	65,725	54,482	33,066
Feed Flour	"	12,314	15,010	27,324	15,761	13,790
Bran	Tons	12,839	14,441	27,280	23,749	8,098
Shorts	"	12,900	19,540	32,440	23,722	11,545
Middlings	"	6,993	9,880	16,873	8,534	8,354
All Other Offal*.....	"	6,576	4,336	10,912	8,429	3,656
Oatmeal	Pounds	553,644	249,960	803,604	748,938	832,592
Rolled Oats	"	12,960,000	11,316,286	24,276,286	15,425,367	5,987,885
Corn Flour and Meal	"	2,980,400	-	2,980,400	2,581,438	609,309
Barley, Pot and Pearl	"	631,550	275,919	907,469	387,438	382,443
Buckwheat Flour	"	134,112	-	134,112	141,352	8,822
<u>Ground Feed</u>						
Ground Oats	Pounds	7,217,681	3,697,634	10,915,315	8,095,416	1,240,242
Cracked Corn	"	9,792,006	202,729	9,994,735	6,344,888	817,561
Ground Barley	"	2,950,628	3,505,135	6,455,763	4,866,888	737,580
Mixed Grain	"	75,045,321	3,517,632	78,562,953	63,786,768	323,019

* Including Coarse Grain Offal.

Canadian flour mills produced 1,927,102 barrels of flour in the month of September, 1939 compared with 1,639,231 barrels in the same period in 1938. This was the largest September output of flour on record in our mills, exceeding that of September, 1928 when 1,885,007 barrels were manufactured. Since the outbreak of the war there has been an increased demand for flour and a number of the larger mills are working at full capacity. The percentage of output to capacity was 87.3 compared with 71.7 in September, 1938. Exports of flour for the month of September, 1939 amounted to 416,553 barrels compared with 319,739 barrels for the same month last year.

Wheat millfeeds increased over a year ago in the same proportion as flour with bran 27,280 (23,749) tons, shorts 32,440 (23,722) tons and middlings 16,873 (8,534) tons.

The production of rolled oats for September, 1939 amounted to 24,276,286 pounds, the largest amount manufactured in any month during the last twenty years. Cereal production for September, 1939 was as follows with figures for the same month last year in brackets and the quantities in pounds: Oatmeal, 803,604 (748,938); Rolled Oats, 24,276,286 (15,425,367); Corn Flour and Meal, 2,980,400 (2,581,438); Pot and Pearl Barley, 907,469 (387,438); and Buckwheat Flour, 134,112 (141,352).

Animal feed products increased over September a year ago and compared as follows: Ground Oats, 10,915,315 (8,095,416) pounds; Cracked Corn, 9,994,735 (6,344,888) pounds; Ground Barley, 6,455,763 (4,866,888) pounds; and Mixed Grain, 78,562,953 (63,786,768) pounds.

The heavy demand in flour due to increased domestic purchases was reflected in the reduced stock in the mills at the close of the month of September. The amount was 678,538 barrels compared with 890,878 barrels in the same month in 1938 and 916,117 for the previous month.

SUMMARY OF MILL GRINDINGS

The following table summarizes the mill grind of wheat, oats corn, barley and mixed grain for the first two months of the crop year 1939-40, with comparative figures for 1938-39:-

Months	Wheat	Oats	Corn	Barley	Mixed Grain
(bushels)					
August, 1939.....	6,383,258	1,095,328	213,394	119,095	1,361,999
September, 1939.....	8,894,675	1,795,844	318,184	172,562	1,764,365
T O T A L	15,277,933	2,891,172	531,578	291,657	3,126,364
TOTAL LAST YEAR.....	12,206,591	2,230,433	483,446	221,216	2,515,041

SUMMARY OF MILL PRODUCTION

The following table summarizes the production of wheat flour, oatmeal, rolled oats and corn flour and meal for the first two months of the crop year 1939-40, including percentage of operation and wheat flour exports, with comparative figures for 1938-39:-

Months	Wheat Flour		Oatmeal	Rollled Oats	Corn Flour and Meal	Wheat Flour Exported
	Percentage of operation	Quantity Barrels	Pounds	Pounds	Pounds	Barrels
August, 1939.....	59.7	1,382,158	514,718	13,885,982	2,270,098	379,276
September, 1939.....	87.3	1,927,102	803,604	24,276,286	2,980,400	416,553
T O T A L		3,309,260	1,318,322	38,162,268	5,250,498	795,829
TOTAL LAST YEAR.....		2,742,268	1,724,516	26,331,196	5,509,776	606,009

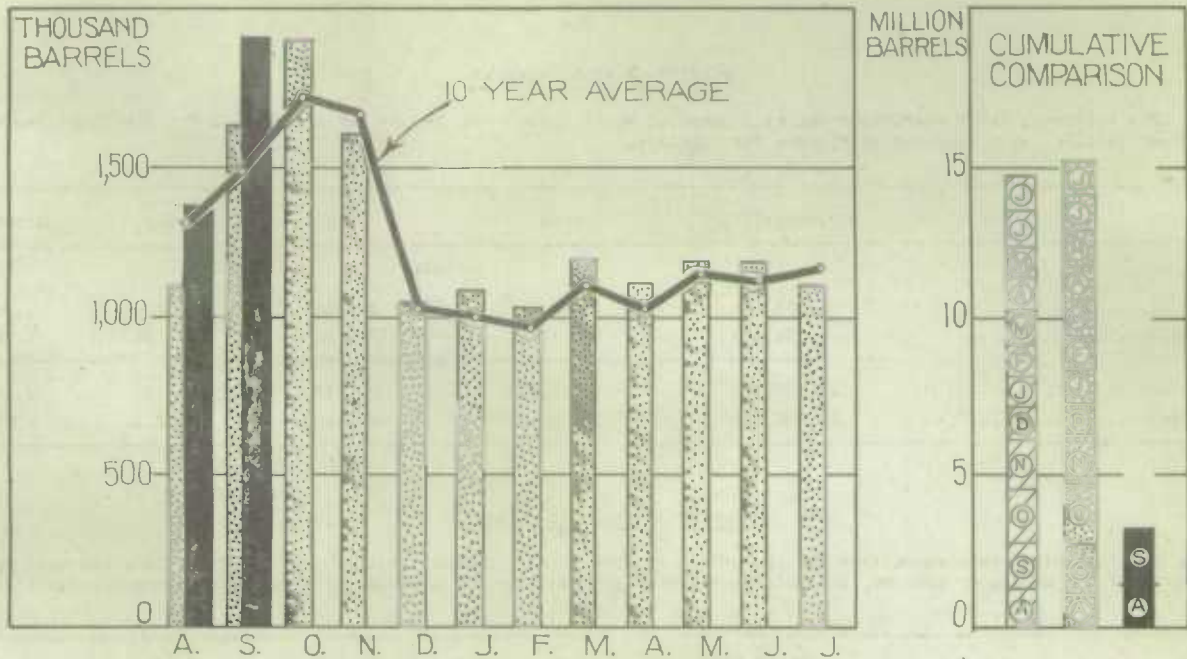
The following table shows exports of wheat flour for the crop years 1932-33 to 1938-39:-

Crop Year	1932-33	1933-34	1934-35	1935-36	1936-37	1937-38	1938-39
(Barrels)							
August	330,382	480,288	412,089	376,562	387,728	288,608	286,270
September	385,113	552,556	369,320	395,640	378,318	306,655	319,739
October	528,794	514,368	485,549	501,442	464,013	336,478	528,601
November	576,864	547,602	504,384	525,368	408,653	405,921	477,875
December	492,033	418,183	340,751	443,828	475,282	337,678	365,085
January	397,304	448,498	346,099	314,311	313,923	295,776	379,538
February	333,114	328,376	309,729	340,102	347,884	272,488	290,766
March	490,270	493,327	497,468	476,773	390,315	301,735	360,752
April	234,387	340,621	276,907	281,162	285,724	184,703	275,275
May	565,080	481,725	383,221	448,653	348,866	297,126	515,778
June	544,507	441,064	429,561	430,171	389,995	299,503	401,189
July	492,765	408,028	395,232	444,905	334,964	282,985	403,377
T O T A L	5,370,613	5,454,636	4,750,310	4,978,917	4,525,665	3,609,656	4,604,245



1010633769

WHEAT FLOUR PRODUCTION



WHEAT FLOUR EXPORT

