

DOMINION BUREAU OF STATISTICS - CANADA
AGRICULTURAL BRANCH

Dominion Statistician:
Acting Chief, Agricultural Branch:

R. H. Coats, LL.D., F.R.S.C.
C. F. Wilson, Ph.D.

CANADIAN MILLING STATISTICS

October, 1940

Ottawa, Canada, December 5, 1940.- The Dominion Bureau of Statistics publishes herewith preliminary statistics of grains ground and products for October, 1940, with comparisons for the previous year, inventory for the month and wheat flour exports. The daily capacity reporting for October, 1940 amounted to 90,784 barrels.

SUMMARY

During the month of October, 1940, 8,430,139 bushels of wheat were ground in Canadian mills compared with 9,383,192 bushels for the corresponding month of the previous year. In the coarse grain group, barley and mixed grain were higher than for October, 1939, while oats, corn and buckwheat were lower.

Grains ground for the month of October, 1940 are shown in bushels with comparative figures for the same month of the previous year in brackets: Wheat 8,430,139 (9,383,192); Oats 1,506,738 (1,683,187); Corn 233,374 (282,950); Barley 268,361 (167,169); Buckwheat 15,987 (20,485); and Mixed Grain 2,570,385 (2,270,654).

Mill stocks of wheat on October 31, 1940 amounted to 5,281,394 bushels, while for the same month in 1939 the amount was 5,514,842 bushels.

Flour production in October, 1940 amounted to 1,872,514 barrels compared with 2,089,562 barrels for the same month last year. Exports of flour in October, 1940 amounted to 750,193 barrels compared with 444,144 barrels in October, 1939.

MILL GRINDINGS

The following table shows the amount of wheat, oats, corn, barley, buckwheat and mixed grain milled for the month of October, 1940, by merchant and custom mills in Canada according to divisions, with comparative totals for the same month last year and stocks on hand at October 31, 1940 (in bushels):-

Grain	Quantities Ground				Stocks on Hand, October 31, 1940		
	Merchant Mills	Custom Mills	Total October, 1940	Total October, 1939	Merchant Mills	Custom Mills	Total October 31, 1940
EASTERN DIVISION							
Wheat -							
Manitoba Spring	3,108,086	-	3,108,086	3,557,182	1,052,727	-	1,052,727
Ontario Winter	479,084	-	479,084	486,044	498,349	-	498,349
Durum	56,063	-	56,063	80,017	8,388	-	8,388
Garnet	126,123	-	126,123	358,479	47,193	-	47,193
United States and All Other	551	152,529	153,080	186,581	9,557	204,349	213,906
Total Wheat	3,769,907	152,529	3,922,436	4,666,303	1,616,214	204,349	1,820,563
Oats	405,965	292,921	698,886	948,626	322,680	73,661	396,341
Corn	78,596	151,222	229,818	279,792	383,398	59,619	443,017
Barley	50,966	101,820	152,786	74,114	66,505	41,509	108,014
Buckwheat	-	15,987	15,987	20,485	5,491	6,239	11,720
Mixed Grain	46,103	2,401,019	2,447,122	2,170,024	3,918	35,888	39,806
WESTERN DIVISION							
Wheat -							
Manitoba Spring	4,079,618	-	4,079,618	4,400,003	3,111,931	-	3,111,931
Ontario Winter	-	-	-	-	-	-	-
Durum	4,318	-	4,318	7,494	7,911	-	7,911
Garnet	75,063	-	75,063	96,858	60,281	-	60,281
United States and All Other	36,227	312,477	348,704	212,534	33,006	247,702	280,708
Total Wheat	4,195,226	312,477	4,507,703	4,716,889	3,213,129	247,702	3,460,831
Oats	714,996	92,856	807,852	734,561	426,866	8,486	435,352
Corn	3,115	441	3,556	3,158	28,818	305	29,123
Barley	62,553	53,022	115,575	93,055	35,871	6,513	40,384
Buckwheat	-	-	-	-	-	-	-
Mixed Grain	-	123,263	123,263	100,630	-	2,537	2,537
DOMINION OF CANADA							
Manitoba Spring	7,187,704	-	7,187,704	7,957,185	4,164,658	-	4,164,658
Ontario Winter	479,084	-	479,084	486,044	498,349	-	498,349
Durum	60,381	-	60,381	87,511	16,299	-	16,299
Garnet	201,186	-	201,186	453,337	107,474	-	107,474
United States and All Other	36,778	465,006	501,784	399,115	42,563	452,051	494,614
Total Wheat	7,965,133	465,006	8,430,139	9,383,192	4,829,343	452,051	5,281,394
Oats	1,120,961	385,777	1,506,738	1,683,187	749,546	82,147	831,693
Corn	81,711	151,663	233,374	282,950	412,216	59,924	472,140
Barley	113,519	154,842	268,361	167,169	100,376	48,022	148,398
Buckwheat	-	15,987	15,987	20,485	5,491	6,239	11,720
Mixed Grain	46,103	2,524,282	2,570,385	2,270,654	3,918	38,425	42,343

Price: 50 cents a year.

MILLINGS

The following table shows the production from wheat and coarse grains ground in merchant and custom mills in Canada for the month of October, 1940, according to divisions, with comparative totals for the same month last year and stocks on hand at October 31, 1940:-

Products	Unit of Measure	Production from Grindings				Stock on hand October 31, 1940
		Eastern Division	Western Division	Total October, 1940	Total October, 1939	
<u>Wheat Flour</u>						
Manitoba Sp. P. No. 1	Barrels	300,644	271,397	572,041	799,665	342,755
Manitoba Sp. P. No. 2	"	213,538	391,654	605,192	544,949	246,189
Ontario Winter Straight	"	97,012	-	97,012	103,037	15,428
All Other	"	226,948	295,876	522,824	550,403	545,953
TOTAL FLOUR	"	838,142	958,927	1,797,069	1,998,054	1,150,325
<u>Sundry Cereals</u>						
Low Grade Flour	Barrels	22,260	28,556	50,816	66,415	25,842
Feed Flour	"	15,002	9,627	24,629	25,092	7,384
Bran	Tons	13,840	15,747	29,587	31,709	5,708
Shorts	"	10,813	15,648	26,461	34,474	6,636
Middlings	"	6,645	4,649	11,294	10,248	3,706
All Other Offal*.....	"	3,335	4,958	8,293	9,609	3,789
Oatmeal	Pounds	1,065,402	1,590,738	2,656,140	731,379	1,262,583
Rolled Oats	"	4,763,410	10,196,780	14,960,190	21,417,018	7,685,425
Corn Flour and Meal	"	1,710,692	-	1,710,692	3,158,488	487,529
Barley, Pot and Pearl	"	270,196	388,031	658,227	388,153	282,894
Buckwheat Flour	"	264,144	-	264,144	330,550	-
<u>Ground Feed</u>						
Ground Oats	Pounds	11,522,947	4,274,246	15,797,193	12,414,382	1,766,660
Cracked Corn	"	9,096,271	199,163	9,295,434	8,112,730	810,770
Ground Barley	"	6,754,507	4,811,554	11,566,061	8,192,194	584,583
Mixed Grain	"	109,705,102	5,528,702	115,233,804	101,337,795	328,189

*Including Coarse Grain Offal.

Flour production for the month of October, 1940 amounted to 1,872,514 barrels compared with 2,089,562 barrels for the same month last year. The percentage of output to capacity was 80.0 compared with 94.1 for October, 1939. Exports of flour for October, 1940 amounted to 750,193 barrels, the highest monthly export for the present crop year.

Total millfeed production was lower than for the same month a year ago with bran 29,587 (31,759) tons, shorts 26,461 (34,474) tons and middlings 11,294 (10,248) tons.

Cereal production for October, 1940 was as follows with figures for the same month last year in brackets and the quantities in pounds: Oatmeal, 2,656,140 (731,379); Rolled Oats, 14,960,190 (21,417,018); Corn Flour and Meal, 1,710,692 (3,158,488); Pot and Pearl Barley, 658,227 (388,153); and Buckwheat Flour, 264,144 (330,550).

Animal feed products showed an improvement over the same month a year ago and compared as follows: Ground Oats, 15,797,193 (12,414,382) pounds; Cracked Corn, 9,295,434 (8,112,730) pounds; Ground Barley, 11,566,061 (8,192,194) pounds; and Mixed Grain, 115,233,804 (101,337,795) pounds.

Total flour stocks amounted to 1,183,551 barrels compared with 940,505 barrels in October, 1939 and 936,413 barrels for the previous month.

SUMMARY OF MILL GRINDINGS

The following table summarizes the mill grind of wheat, oats, corn, barley and mixed grain for three months of the crop year 1940-41, with comparative figures for 1939-40:

Months	Wheat	Oats	Corn	Barley	Mixed Grain
(bushels)					
August, 1940	5,898,846	1,235,109	242,973	297,513	1,754,276
September	7,401,774	1,115,764	196,067	252,786	1,927,293
October	8,430,139	1,506,738	233,374	268,361	2,570,365
T O T A L S	21,730,759	3,857,611	672,414	818,660	6,251,954
TOTALS LAST YEAR.....	24,661,125	4,574,359	814,528	458,826	5,397,018

SUMMARY OF MILL PRODUCTION

The following table summarizes the production of wheat flour, oatmeal, rolled oats and corn flour and meal for three months of the crop year 1940-41, including percentage of operation and wheat flour exports, with comparative figures for 1939-40:

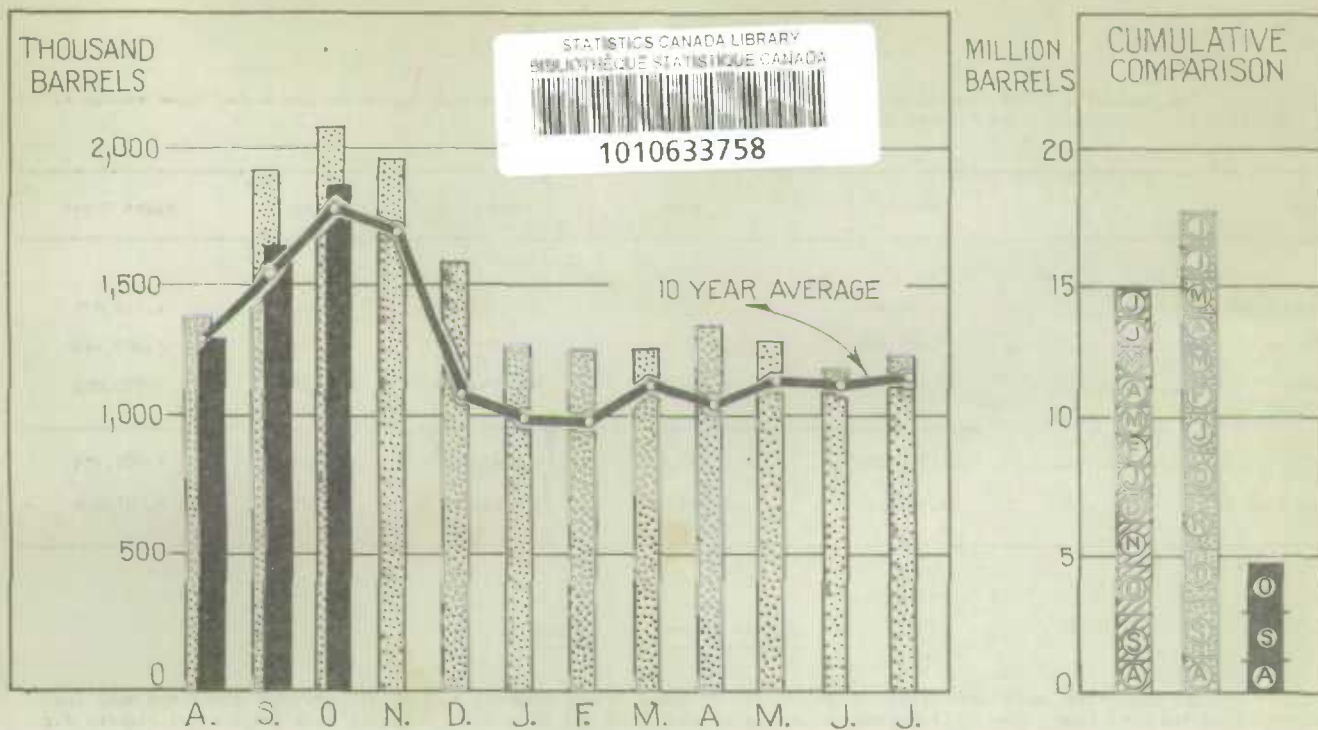
Months	Wheat Flour		Oatmeal	Rolled Oats	Corn Flour and Meal	Wheat Flour Exported
	Percentage of operation	Quantity Barrels	Pounds	Pounds	Pounds	Barrels
August, 1940	53.8	1,291,451	1,072,062	14,135,862	2,165,268	575,756
September	76.2	1,635,849	496,780	12,570,006	2,048,062	550,754
October	80.0	1,872,514	2,656,140	14,960,190	1,710,692	750,193
T O T A L S		4,799,814	4,224,982	41,666,058	5,924,012	1,876,703
TOTALS LAST YEAR		5,398,822	2,049,701	59,579,286	8,408,986	1,239,973

The following table shows the manufacture of oatmeal in Canada for the calendar years 1934 to 1939:-

Months	1934	1935	1936	1937	1938	1939*
(Pounds)						
January	803,504	649,896	652,865	1,026,104	840,002	1,354,397
February	558,853	636,312	495,282	420,032	734,538	872,808
March	569,533	533,056	669,324	611,187	558,750	601,190
April	629,032	480,234	449,317	580,435	719,259	480,674
May	614,693	816,112	433,634	598,640	441,461	327,371
June	319,089	871,222	577,358	401,239	628,374	394,590
July	553,201	491,472	421,804	263,314	682,344	512,732
August	416,383	493,528	561,324	473,546	975,578	514,718
September	717,964	902,388	669,032	838,850	748,938	803,604
October	1,065,990	1,700,720	828,039	688,108	1,566,732	731,379
November	1,119,776	1,549,038	882,480	1,039,574	2,300,746	2,873,646
December	458,890	692,986	728,672	1,085,780	1,953,298	4,838,664
T O T A L S	7,826,908	9,816,964	7,368,531	8,026,809	12,150,020	14,305,773

* Preliminary figures from August to December, 1939.

WHEAT FLOUR PRODUCTION



WHEAT FLOUR EXPORT

