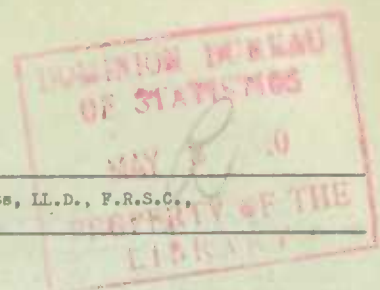


DOMINION BUREAU OF STATISTICS - CANADA  
AGRICULTURAL BRANCH



Dominion Statistician:  
Acting Chief, Agricultural Branch:

R. H. Coats, LL.D., F.R.S.C.,  
W. Dougan.

CANADIAN MILLING STATISTICS

March, 1940.

Ottawa, Canada, May 2, 1940.- The Dominion Bureau of Statistics publishes, herewith, preliminary statistics of grains ground and products for March, 1940, with comparisons for the previous year, inventory for the month and wheat flour exports.

The daily capacity reporting for March, 1940 amounted to 90,943 barrels.

SUMMARY

During the month of March, 1940, 5,632,085 bushels of wheat were ground in Canadian mills compared with 5,411,833 bushels for the corresponding month of the previous year. Oats, barley and mixed grain were higher than for March, 1939, while corn and buckwheat were lower.

Grains ground for the month of March, 1940 are shown in bushels with comparative figures for the same month of the previous year in brackets: Wheat 5,632,085 (5,411,833); Oats 1,264,243 (1,112,025); Corn 197,405 (252,736); Barley 115,875 (114,985); Buckwheat 2,125 (8,074); and Mixed Grain 2,455,550 (2,129,586).

Mill stocks of wheat on March 31, 1940 amounted to 5,849,539 bushels, while for the same month in 1939 the amount was 4,740,755 bushels.

Flour production in March, 1940 amounted to 1,257,034 barrels compared with 1,193,717 barrels for the same month last year. Exports of flour in March, 1940 amounted to 715,579 barrels compared with 360,752 barrels in March, 1939.

MILL GRINDINGS

The following table shows the amount of wheat, oats, corn, barley, buckwheat and mixed grain milled for the month of March, 1940, by merchant and custom mills in Canada according to divisions, with comparative totals for the same month last year and stocks on hand at March 31, 1940 (in bushels):-

Grain	Quantities Ground				Stocks on Hand, March 31, 1940		
	Merchant Mills	Custom Mills	Total March 1940	Total March 1939	Merchant Mills	Custom Mills	Total March 31, 1940
<u>EASTERN DIVISION</u>							
Wheat -							
Manitoba Spring .....	2,145,727	-	2,145,727	2,287,435	1,123,477	-	1,123,477
Ontario Winter .....	339,316	-	339,316	219,031	320,703	-	320,703
Durum .....	91,342	-	91,342	90,041	46,898	-	46,898
Garnet .....	232,256	-	232,256	53,104	125,982	-	125,982
United States and All Other .....	181,111	104,605	285,716	225,115	223,424	158,222	381,646
Total Wheat .....	2,989,752	104,605	3,094,357	2,874,726	1,840,484	158,222	1,998,706
Oats .....	541,662	194,859	736,521	613,859	758,946	110,260	869,206
Corn .....	83,516	110,068	193,584	249,678	259,475	63,629	323,104
Barley .....	22,413	51,916	74,329	75,158	39,501	29,259	68,760
Buckwheat .....	-	2,125	2,125	8,074	11,314	4,717	16,031
Mixed Grain .....	46,405	2,333,413	2,379,818	2,058,253	1,604	28,188	29,792
<u>WESTERN DIVISION</u>							
Wheat -							
Manitoba Spring .....	2,409,802	-	2,409,802	2,365,425	3,457,915	-	3,457,915
Ontario Winter .....	-	-	-	-	-	-	-
Durum .....	5,500	-	5,500	-	148	-	148
Garnet .....	34,316	-	34,316	65,803	273,160	-	273,160
United States and All Other .....	7,801	80,309	88,110	105,879	14,944	104,666	119,610
Total Wheat .....	2,457,419	80,309	2,537,728	2,537,107	3,746,167	104,666	3,850,833
Oats .....	465,919	61,803	527,722	498,166	660,192	10,574	670,766
Corn .....	3,260	561	3,821	3,058	14,427	1,397	15,824
Barley .....	15,804	25,742	41,546	39,827	48,580	6,224	54,804
Buckwheat .....	-	-	-	-	-	-	-
Mixed Grain .....	-	75,732	75,732	71,333	-	816	816
<u>DOMINION OF CANADA</u>							
Wheat -							
Manitoba Spring .....	4,555,529	-	4,555,529	4,652,860	4,581,392	-	4,581,392
Ontario Winter .....	339,316	-	339,316	219,031	320,703	-	320,703
Durum .....	96,842	-	96,842	90,041	47,046	-	47,046
Garnet .....	286,572	-	286,572	118,907	399,142	-	399,142
United States and All Other .....	188,912	184,914	373,826	330,994	238,368	262,888	501,256
Total Wheat .....	5,447,171	184,914	5,632,085	5,411,833	5,586,651	262,888	5,849,539
Oats .....	1,007,581	256,662	1,264,243	1,112,025	1,419,138	120,834	1,539,972
Corn .....	86,776	110,629	197,405	252,736	273,902	65,026	338,928
Barley .....	38,217	77,658	115,875	114,985	88,081	35,483	123,564
Buckwheat .....	-	2,125	2,125	8,074	11,314	4,717	16,031
Mixed Grain .....	46,405	2,409,145	2,455,550	2,129,586	1,604	29,004	30,608

Price: 50 cents a year.

MILLINGS

The following table shows the production from wheat and coarse grains ground in merchant and custom mills in Canada for the month of March, 1940, according to divisions, with comparative totals for the same month last year and stocks on hand at March 31, 1940:-

Products	Unit of Measure	Production from Grindings				Stocks on hand March 31, 1940
		Eastern Division	Western Division	Total March, 1940	Total March, 1939	
<u>Wheat Flour</u>						
Manitoba Sp. P. No. 1 .....	Barrels	301,871	115,492	417,363	398,658	330,099
Manitoba Sp. P. No. 2 .....	"	141,011	201,295	342,306	356,472	225,834
Ontario Winter Straight .....	"	70,951	-	70,951	66,973	33,991
All Other .....	"	160,539	226,466	387,005	308,782	528,521
Total Flour .....	"	674,372	543,253	1,217,625	1,130,885	1,118,445
<u>Sundry Cereals</u>						
Low Grade Flour .....	Barrels	10,536	13,803	24,339	44,651	13,273
Feed Flour .....	"	8,163	6,907	15,070	18,181	12,061
Bran .....	Tons	11,120	9,668	20,788	19,445	2,938
Shorts .....	"	8,410	8,043	16,453	17,472	3,912
Middlings .....	"	5,199	2,307	7,506	7,182	2,090
All Other Offal* .....	"	3,910	3,565	7,475	6,234	2,504
Oatmeal .....	Pounds	236,966	343,940	580,906	601,190	1,875,342
Rolled Oats .....	"	8,394,066	6,922,900	15,316,966	11,855,986	11,793,324
Corn Flour and Meal .....	"	1,588,868	-	1,588,868	2,624,648	781,673
Barley, Pot and Pearl .....	"	185,059	120,638	305,697	351,514	317,886
Buckwheat Flour .....	"	34,000	-	34,000	131,016	9,335
<u>Ground Feed</u>						
Ground Oats .....	Pounds	7,428,491	2,927,499	10,355,990	11,705,420	1,926,689
Cracked Corn .....	"	6,314,856	214,063	6,528,919	8,013,042	729,973
Ground Barley .....	"	3,216,005	1,744,282	4,960,287	4,587,913	722,020
Mixed Grain .....	"	106,582,101	3,376,031	109,958,132	94,617,692	239,597

\* Including Coarse Grain Offal.

Flour production for the month of March, 1940 amounted to 1,257,034 barrels compared with 1,193,717 barrels for the same month last year. Production in Canadian mills has continued at a steady level since January with amounts recorded by months at 1,266,303, 1,246,798 and 1,257,034 barrels. Total flour manufactured for eight months of the present crop year amounted to 12,729,352 barrels compared with 10,635,217 barrels in the same period last year.

Millfeeds for March, 1940 compared with the corresponding month last year were, bran 20,788 (19,445) tons, shorts 16,453 (17,472) tons and middlings 7,506 (7,182) tons.

Cereal production for March, 1940 was as follows with figures for the same month last year in brackets and the quantities in pounds: Oatmeal, 580,906 (601,190); Rolled Oats, 15,316,966 (11,855,986); Corn Flour and Meal, 1,588,868 (2,624,648); Pot and Pearl Barley, 305,697 (351,514); Buckwheat Flour, 34,000 (131,016).

Animal feed products compared as follows: Ground Oats, 10,355,990 (11,705,420) pounds; Cracked Corn, 6,528,919 (8,013,042) pounds; Ground Barley, 4,960,287 (4,587,913) pounds; Mixed Grain, 109,958,132 (94,617,692) pounds.

Total flour stocks for March, 1940 amounted to 1,143,779 barrels compared with 1,233,619 barrels for the same month last year and 1,101,670 barrels for the previous month.



### SUMMARY OF MILL GRINDINGS

The following table summarizes the mill grind of wheat, oats, corn, barley and mixed grain for eight months of the crop year 1939-40, with comparative figures for 1938-39:-

Months	Wheat	Oats	Corn	Barley	Mixed Grains
(bushels)					
August, 1939 .....	6,383,258	1,095,328	213,394	119,095	1,361,999
September .....	8,894,675	1,795,844	318,184	172,562	1,764,365
October .....	9,383,192	1,683,187	282,950	167,169	2,270,654
November .....	8,855,723	1,658,254	250,074	196,822	2,759,117
December .....	7,202,927	1,696,461	335,949	168,450	3,078,599
January, 1940 .....	5,723,460	2,090,244	279,651	158,818	2,943,416
February .....	5,599,574	1,690,868	198,325	134,849	2,415,934
March .....	5,632,085	1,264,243	197,405	115,875	2,455,550
TOTALS .....	57,674,894	12,974,429	2,075,932	1,233,640	19,049,634
TOTALS LAST YEAR .....	47,725,768	10,035,126	2,064,504	1,033,537	15,527,457

### SUMMARY OF MILL PRODUCTION

The following table summarizes the production of wheat flour, oatmeal, rolled oats and corn flour and meal for eight months of the crop year 1939-40, including percentage of operation and wheat flour exports, with comparative figures for 1938-39:

Months	Wheat Flour		Oatmeal Pounds	Rolled Oats Pounds	Corn Flour and Meal Pounds	Wheat Flour Exported Barrels
	Percentage of operation	Quantity Barrels				
August, 1939 .....	59.7	1,382,158	514,718	13,885,982	2,270,098	379,276
September .....	87.3	1,927,102	803,604	24,276,286	2,980,400	416,553
October .....	94.1	2,089,562	731,379	21,417,018	3,158,488	444,144
November .....	86.6	1,960,429	2,873,646	18,429,532	3,404,476	572,610
December .....	70.8	1,599,966	4,838,664	17,595,082	1,240,680	902,714
January, 1940 .....	54.9	1,266,303	3,787,268	23,330,918	1,747,317	725,316
February .....	55.7	1,246,798	969,502	22,804,540	1,439,600	559,338
March .....	57.2	1,257,034	580,906	15,316,966	1,588,868	715,579
TOTALS .....		12,729,352	15,099,687	157,056,324	17,829,927	4,715,730
TOTALS LAST YEAR .....		10,635,217	10,980,714	114,737,271	19,744,239	3,008,626

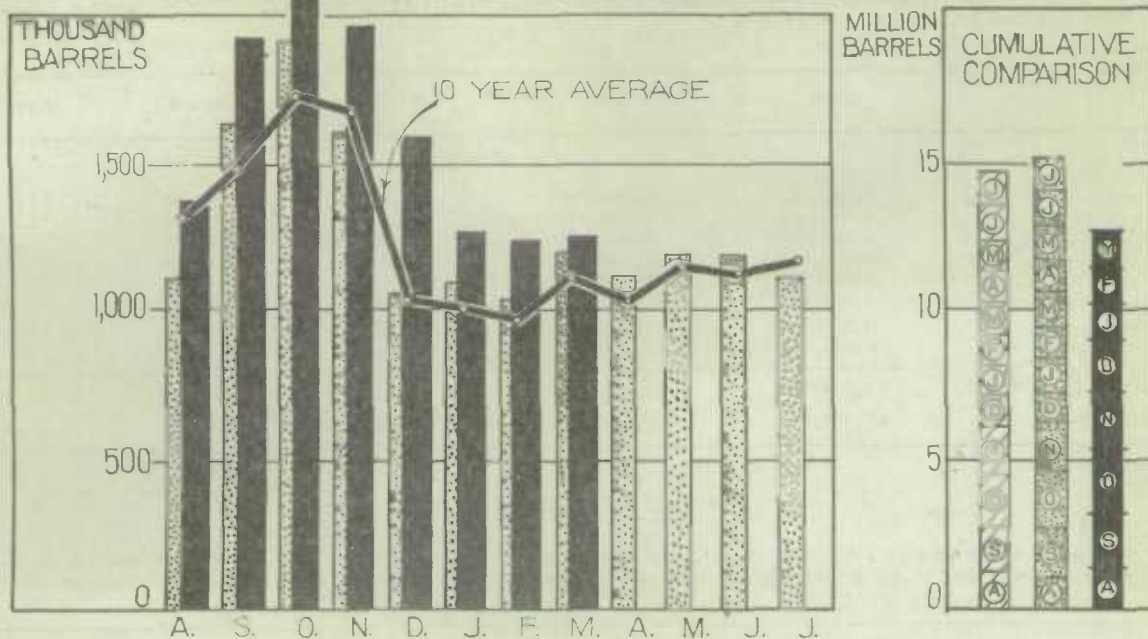
The following table shows the production of mixed grain feed for the calendar years 1934-1939:-

Months	1934	1935	1936	1937	1938	1939*
(pounds)						
January .....	59,059,082	67,978,754	81,458,096	61,762,151	82,815,643	93,943,439
February .....	54,323,344	63,144,493	75,688,182	53,820,274	70,110,379	87,230,781
March .....	56,402,138	64,289,632	74,310,851	55,735,540	74,727,173	98,768,151
April .....	46,790,899	61,904,803	71,102,911	49,111,858	67,389,427	87,828,369
May .....	33,266,941	49,511,622	44,433,778	35,302,814	48,319,140	68,608,792
June .....	23,964,527	35,098,461	39,704,002	27,615,874	36,584,972	58,029,907
July .....	21,287,295	30,740,782	38,438,622	24,064,111	36,178,091	54,239,599
August .....	33,150,561	39,668,027	46,872,567	35,360,675	50,062,127	60,555,429
September .....	46,936,030	54,434,034	58,975,481	56,585,498	67,455,658	78,562,953
October .....	59,338,377	71,403,856	70,002,354	69,125,536	88,907,090	101,337,795
November .....	69,969,546	82,367,560	74,980,042	79,742,431	108,135,892	123,786,567
December .....	72,700,946	85,518,493	73,634,964	79,560,530	103,214,444	137,285,171
TOTAL .....	577,189,686	706,060,517	749,601,850	627,787,292	833,900,036	1,050,176,953



1010633751

## WHEAT FLOUR PRODUCTION



## WHEAT FLOUR EXPORT

