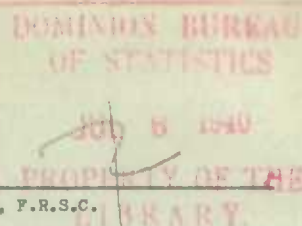


DOMINION BUREAU OF STATISTICS - CANADA
AGRICULTURAL BRANCHDominion Statistician:
Acting Chief, Agricultural Branch:R. H. Coats, LL.D., F.R.S.C.
W. Dougan.

CANADIAN MILLING STATISTICS

May, 1940.

Ottawa, Canada, July 5, 1940.- The Dominion Bureau of Statistics publishes, herewith, preliminary statistics of grains ground and products for May, 1940, with comparisons for the previous year, inventory for the month and wheat flour exports.

The daily capacity reporting for May, 1940 amounted to 92,528 barrels.

SUMMARY

During the month of May, 1940, 5,775,393 bushels of wheat were ground in Canadian mills compared with 5,462,753 bushels for the corresponding month of the previous year. In the coarse grain group, oats, barley and mixed grain were higher than for May last year, while corn and buckwheat were lower.

Grains ground for the month of May, 1940 are shown in bushels with comparative figures for the same month of the previous year in brackets: Wheat 5,775,393 (5,462,753); Oats 1,141,081 (768,935); Corn 195,700 (215,217); Barley 135,647 (99,452); Buckwheat 2,105 (5,450); and Mixed Grain 2,106,434 (1,650,750).

Mill stocks of wheat on May 31, 1940 amounted to 5,795,783 bushels, while for the same month in 1939 the amount was 4,823,465 bushels.

Flour production in May, 1940 amounted to 1,282,906 barrels compared with 1,191,778 barrels for the same month last year. Exports of flour in May, 1940 amounted to 722,595 barrels compared with 515,778 barrels in May, 1939.

MILL GRINDINGS

The following table shows the amount of wheat, oats, corn, barley, buckwheat and mixed grain milled for the month of May, 1940 by merchant and custom mills in Canada according to divisions, with comparative totals for the same month last year and stocks on hand at May 31, 1940 (in bushels):-

Grain	Quantities Ground				Stock on Hand, May 31, 1940		
	Merchant Mills	Custom Mills	Total May, 1940	Total May, 1939	Merchant Mills	Custom Mills	Total May 31, 1940
EASTERN DIVISION							
Wheat-							
Manitoba Spring	1,989,387		1,989,387	2,401,127	951,690		951,690
Ontario Winter	418,354		418,354	198,180	338,479		338,479
Durum	54,341		54,341	38,369	32,279		32,279
Garnet	94,443		94,443	40,318	46,680		46,680
United States and All Other	247,072	129,593	376,665	270,534	339,878	166,030	505,908
Total Wheat	2,803,597	129,593	2,933,190	2,948,528	1,709,006	166,030	1,875,036
Oats	482,006	178,205	660,211	459,755	863,211	72,605	935,816
Corn	98,600	91,851	190,451	211,259	227,263	178,507	405,770
Barley	20,460	55,815	76,275	65,361	50,750	36,020	86,770
Buckwheat	-	2,105	2,105	5,450	9,560	7,425	16,985
Mixed Grain	39,340	1,977,814	2,017,154	1,589,988	2,962	34,132	37,094
WESTERN DIVISION							
Wheat-							
Manitoba Spring	2,699,564		2,699,564	2,297,443	3,459,640		3,459,640
Ontario Winter	-		-	-	-		-
Durum	3,976		3,976	7,255	-		-
Garnet	34,841		34,841	118,705	192,252		192,252
United States and All Other	15,482	88,340	103,822	90,822	17,880	250,975	268,855
Total Wheat	2,753,863	88,340	2,842,203	2,514,225	3,669,772	250,975	3,920,747
Oats	411,893	68,977	480,870	309,180	503,353	6,753	510,105
Corn	4,608	641	5,249	3,958	34,167	1,246	35,413
Barley	21,781	37,591	59,372	34,091	61,677	4,690	66,367
Buckwheat	-	-	-	-	-	-	-
Mixed Grain	-	89,280	89,280	63,762	-	1,447	1,447
DOMINION OF CANADA							
Wheat-							
Manitoba Spring	4,688,951		4,688,951	4,698,570	4,411,330		4,411,330
Ontario Winter	418,354		418,354	198,180	338,479		338,479
Durum	58,317		58,317	45,624	32,279		32,279
Garnet	129,284		129,284	159,023	238,932		238,932
United States and All Other	262,554	217,933	480,487	361,356	357,758	417,005	774,763
Total Wheat	5,557,460	217,933	5,775,393	5,462,753	5,378,778	417,005	5,795,783
Oats	893,899	247,182	1,141,081	768,935	1,366,563	79,358	1,445,921
Corn	103,208	92,492	195,700	215,217	261,430	179,753	441,183
Barley	42,241	93,406	135,647	99,452	112,427	40,710	153,137
Buckwheat	-	2,105	2,105	5,450	9,560	7,425	16,985
Mixed Grain	39,340	2,067,094	2,106,434	1,653,750	2,962	35,579	38,541

Price: 50 cents a year.

MILLINGS

The following table shows the production from wheat and coarse grains ground in merchant and custom mills in Canada for the month of May 1940, according to divisions, with comparative totals for the same month last year and stocks on hand at May 31, 1940.

Products	Unit of Measure	Production from Grindings				Stocks on hand May 31, 1940
		Eastern Division	Western Division	Total May, 1940	Total May, 1939	
<u>Wheat Flour</u>						
Manitoba Sp. P. No. 1	Barrels	209,393	160,593	369,986	422,467	353,183
Manitoba Sp. P. No. 2	"	184,955	219,599	404,554	343,099	204,687
Ontario Winter Straight	"	89,995	-	89,995	68,356	18,154
All Other	"	135,655	222,801	358,456	289,706	497,228
Total Flour	"	619,998	602,993	1,222,991	1,123,628	1,073,252
<u>Sundry Cereals</u>						
Low Grade Flour	Barrels	14,858	16,781	31,639	50,136	13,630
Feed Flour	"	19,420	8,856	28,276	18,014	15,801
Bran	Tons	10,577	9,804	20,381	19,870	3,362
Shorts	"	7,719	10,029	17,748	19,789	2,989
Middlings	"	5,290	2,775	8,065	6,932	1,649
All Other Offal*	"	3,707	3,021	6,728	4,765	3,183
Oatmeal	Pounds	267,772	119,564	387,336	327,371	1,531,375
Rolled Oats	"	7,035,960	5,886,436	12,922,396	7,832,407	8,000,503
Corn Flour and Meal	"	2,052,654	-	2,052,654	1,627,538	570,036
Barley, Pot and Pearl	"	46,156	26,134	72,290	202,272	305,644
Buckwheat Flour	"	33,680	-	33,680	87,200	-
<u>Ground Feed</u>						
Ground Oats	Pounds	7,578,153	3,769,869	11,348,022	9,185,097	1,734,475
Cracked Corn	"	5,850,189	294,035	6,144,224	7,406,694	741,488
Ground Barley	"	3,572,642	2,803,516	6,376,158	4,298,876	411,585
Mixed Grain	"	90,155,057	3,987,000	94,142,057	73,630,772	221,446

* Including Coarse Grain Offal.

Flour production for the month of May, 1940 amounted to 1,282,906 barrels compared with 1,191,778 barrels for the corresponding month last year. Export figures improved with 722,595 barrels against 515,778 barrels. Comparisons for millfeeds were bran 20,381 (19,870) tons, shorts 17,748 (19,789) tons and middlings 8,065 (6,932) tons.

Cereal production for May, 1940 was as follows with figures for the same month last year in brackets and the quantities in pounds: Oatmeal, 387,336 (327,371); Rolled Oats, 12,922,396 (7,832,407); Corn Flour and Meal, 2,052,654 (1,627,538); Pot and Pearl Barley, 72,290 (202,272); and Buckwheat Flour, 33,680 (87,200).

Animal feed products continued firm and compared as follows: Ground Oats, 11,348,022 (9,185,097) pounds; Cracked Corn, 6,144,224 (7,406,694) pounds; Ground Barley, 6,376,158 (4,298,876) pounds; and Mixed Grain, 94,142,057 (73,630,772) pounds.

Total flour stocks for the month of May, 1940 amounted to 1,102,683 barrels compared with 1,136,224 barrels for the same month last year and 1,064,137 barrels for the previous month.

SUMMARY OF MILL GRINDINGS

The following table summarizes the mill grind of wheat, oats, corn, barley and mixed grain for ten months of the crop year 1939-40, with comparative figures for 1938-39:-

Months	Wheat	Oats	Corn	Barley	Mixed Grain
			(bushels)		
August, 1939	6,383,258	1,095,328	213,394	119,095	1,361,999
September	8,894,675	1,795,844	318,184	172,562	1,764,365
October	9,383,192	1,683,187	282,950	167,169	2,270,654
November	8,855,723	1,658,254	250,074	196,822	2,759,117
December	7,202,927	1,696,461	335,949	168,450	3,078,599
January, 1940	5,723,460	2,090,244	279,651	158,818	2,943,416
February	5,599,574	1,690,868	198,325	134,849	2,415,934
March	5,632,085	1,264,243	197,405	115,875	2,455,550
April	6,035,930	817,269	208,677	127,927	2,157,642
May	5,775,393	1,141,081	195,700	135,647	2,106,434
T O T A L S	69,486,217	14,932,779	2,480,309	1,497,214	23,313,710
TOTALS LAST YEAR	58,289,439	11,646,347	2,497,063	1,236,315	19,087,130

SUMMARY OF MILL PRODUCTION

The following table summarizes the production of wheat flour, oatmeal, rolled oats and corn flour and meal for ten months of the crop year 1939-40, including percentage of operation and wheat flour exports, with comparative figures for 1938-39:

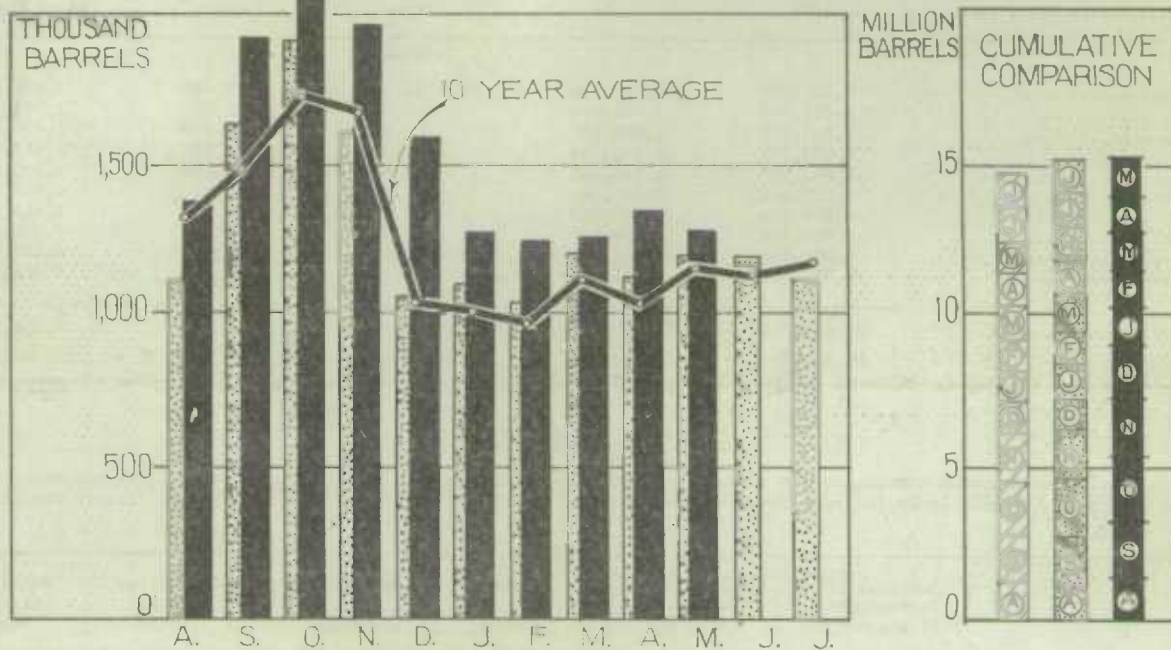
Months	Wheat Flour		Oatmeal	Rolled Oats	Corn Flour and Meal	Wheat Flour Exported
	Percentage of operation	Quantity Barrels	Pounds	Pounds	Pounds	Barrels
August, 1939	59.7	1,382,158	514,718	13,885,982	2,270,098	379,276
September	87.3	1,927,102	803,604	24,276,286	2,980,400	416,553
October	94.1	2,089,562	731,379	21,417,018	3,158,488	444,144
November	86.6	1,960,429	2,873,646	18,429,532	3,404,476	572,810
December	70.8	1,599,966	4,838,664	17,595,082	1,240,680	902,714
January, 1940	54.9	1,266,303	3,787,268	23,330,918	1,747,317	725,316
February	55.7	1,246,798	969,502	22,804,540	1,439,600	559,338
March	57.2	1,257,034	580,906	15,316,966	1,588,868	715,579
April	58.6	1,344,293	310,780	7,882,128	1,850,751	519,870
May	55.5	1,282,906	387,336	12,922,396	2,052,654	722,595
T O T A L S		15,356,551	15,797,803	177,860,848	21,733,332	5,958,195
TOTALS LAST YEAR		12,940,688	11,788,759	129,569,336	23,321,619	3,799,679

The following table shows the production of barley feed for the calendar years 1934-39:-

Months	1934	1935	1936	1937	1938	1939*
						(Pounds)
January	3,006,490	2,572,951	3,827,702	2,961,022	5,467,141	5,111,871
February	3,077,322	2,650,051	3,254,096	2,449,876	4,967,182	4,437,736
March	3,499,543	2,512,629	3,901,761	2,888,708	4,667,897	4,994,421
April	2,427,234	2,325,441	2,936,600	2,701,342	4,099,928	4,481,007
May	2,323,447	1,985,522	2,922,210	2,949,834	3,323,971	4,597,476
June	2,111,692	1,730,676	2,225,436	3,213,950	3,049,922	4,139,650
July	1,960,981	1,631,742	2,979,671	3,282,987	3,482,293	4,704,527
August	2,366,757	2,041,878	3,463,441	4,001,327	4,142,401	5,347,364
September	2,824,495	2,515,995	4,774,849	4,930,150	4,964,930	6,455,763
October	2,697,410	3,794,779	5,066,271	5,799,832	5,926,059	8,192,194
November	3,178,223	4,854,667	4,654,227	5,544,806	6,587,498	8,358,198
December	2,639,451	3,444,817	4,168,746	5,140,309	4,938,833	7,426,267
T O T A L S	32,113,045	32,061,148	44,175,010	45,864,143	55,618,055	68,246,474

* Preliminary from August to December, 1939.

WHEAT FLOUR PRODUCTION



WHEAT FLOUR EXPORT

