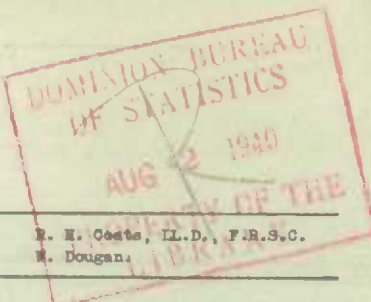


DOMINION BUREAU OF STATISTICS - CANADA  
AGRICULTURAL BRANCHDominion Statistician:  
Acting Chief, Agricultural Branch:R. H. Coats, LL.D., F.R.S.C.  
W. Dougan:

## CANADIAN MILLING STATISTICS

June, 1940

Ottawa, Canada, August 1, 1940.- The Dominion Bureau of Statistics publishes herewith, preliminary statistics of grains ground and products for June, 1940, with comparisons for the previous year, inventory for the month and wheat flour exports.

The daily capacity reporting for June, 1940 amounted to 91,564 barrels.

## SUMMARY

During the month of June, 1940 5,262,534 bushels of wheat were ground in Canadian mills compared with 5,482,530 bushels for the corresponding month of the previous year. In the coarse grain group, oats, barley and mixed grain were higher than for June last year, while corn and buckwheat were lower:

Grains ground for the month of June, 1940 are shown in bushels with comparative figures for the same month of the previous year in brackets: Wheat, 5,262,534 (5,482,530); Oats 964,541 (842,494); Corn 203,573 (238,848); Barley 133,448 (115,462); Buckwheat 2,442 (4,551); and Mixed Grain 1,536,098 (1,323,440).

Mill stocks of wheat on June 30, 1940 amounted to 4,891,831 bushels, while for the same month in 1939 the amount was 5,058,809 bushels.

Flour production in June, 1940 amounted to 1,170,238 barrels compared with 1,187,875 barrels for the same month last year. Exports of flour in June, 1940 amounted to 509,306 barrels compared with 401,189 barrels in June, 1939.

## MILL GRINDINGS

The following table shows the amount of wheat, oats, corn, barley, buckwheat and mixed grain milled for the month of June, 1940, by merchant and custom mills in Canada according to divisions, with comparative totals for the same month last year and stocks on hand at June 30, 1940 (in bushels):-

Grain	Quantities Ground				Stocks on hand, June 30, 1940		
	Merchant Mills	Custom Mills	Total June, 1940	Total June, 1939	Merchant Mills	Custom Mills	Total June 30, 1940
<b>EASTERN DIVISION</b>							
Wheat-							
Manitoba Spring .....	1,925,924	-	1,925,924	2,259,275	654,409	-	654,409
Ontario Winter .....	314,353	-	314,353	201,868	319,968	-	319,968
Durum .....	47,273	-	47,273	32,175	30,487	-	30,487
Garnet .....	66,074	-	66,074	27,111	63,134	-	63,134
United States and All Other .....	175,923	70,232	246,155	277,662	303,385	73,958	377,343
Total Wheat .....	2,529,547	70,232	2,599,779	2,798,091	1,371,383	73,958	1,445,341
Oats .....	406,801	132,712	539,513	452,087	954,988	50,990	1,005,978
Corn .....	84,987	114,687	199,674	235,043	218,733	145,328	364,061
Barley .....	22,963	47,418	70,381	75,176	77,594	29,034	106,628
Buckwheat .....	-	2,442	2,442	4,551	8,735	5,787	14,522
Mixed Grain .....	31,595	1,439,963	1,471,558	1,267,535	2,794	29,598	32,392
<b>WESTERN DIVISION</b>							
Wheat-							
Manitoba Spring .....	2,530,551	-	2,530,551	2,331,864	3,171,553	-	3,171,553
Ontario Winter .....	-	-	-	-	-	-	-
Durum .....	6,547	-	6,547	19,520	1,555	-	1,555
Garnet .....	29,397	-	29,397	237,382	178,088	-	178,088
United States and All Other .....	2,782	93,478	96,260	95,673	13,111	82,183	95,294
Total Wheat .....	2,569,277	93,478	2,662,755	2,684,439	3,364,307	82,183	3,446,490
Oats .....	356,122	68,906	425,028	390,407	469,056	2,663	471,719
Corn .....	3,415	484	3,899	3,805	36,074	444	36,518
Barley .....	28,475	34,592	63,067	40,286	48,813	3,735	52,548
Buckwheat .....	-	-	-	-	-	-	-
Mixed Grain .....	-	64,540	64,540	55,905	-	369	369
<b>DOMINION OF CANADA</b>							
Wheat-							
Manitoba Spring .....	4,456,475	-	4,456,475	4,591,139	3,825,962	-	3,825,962
Ontario Winter .....	314,353	-	314,353	201,868	319,968	-	319,968
Durum .....	53,820	-	53,820	51,695	32,042	-	32,042
Garnet .....	95,471	-	95,471	264,493	241,222	-	241,222
United States and All Other .....	176,705	163,710	342,415	373,335	316,496	156,141	472,637
Total Wheat .....	5,096,824	163,710	5,262,534	5,482,530	4,735,693	156,141	4,891,831
Oats .....	762,923	201,618	964,541	842,494	1,424,044	33,653	1,477,697
Corn .....	88,402	115,171	203,573	238,848	254,807	145,772	400,579
Barley .....	51,438	82,010	133,448	115,462	126,407	32,769	159,176
Buckwheat .....	-	2,442	2,442	4,551	8,735	5,787	14,522
Mixed Grain .....	31,595	1,504,503	1,536,098	1,323,440	2,794	29,967	32,761

MILLINGS

The following table shows the production from wheat and coarse grains ground in merchant and custom mills in Canada for the month of June, 1940, according to divisions, with comparative totals for the same month last year and stocks on hand at June 30, 1940:-

Products	Unit of Measure	Production from Grindings				Stocks on hand June 30, 1940
		Eastern Division	Western Division	Total June, 1940	Total June, 1939	
<u>Wheat Flour</u>						
Manitoba Sp. P. No. 1 .....	Barrels	195,927	129,806	325,733	370,074	350,808
Manitoba Sp. P. No. 2 .....	"	153,148	225,119	378,267	347,871	218,059
Ontario Winter Straight .....	"	64,048	-	64,048	66,441	14,739
All Other .....	"	137,242	214,287	351,529	334,952	471,883
Total Flour .....	"	550,365	569,212	1,119,577	1,119,338	1,055,489
<u>Sundry Cereals</u>						
Low Grade Flour .....	Barrels	18,730	16,135	34,865	38,559	15,851
Feed Flour .....	"	9,947	5,849	15,796	29,978	10,342
Bran .....	Tons	8,277	8,902	17,179	17,733	4,776
Shorts .....	"	7,624	9,250	16,874	19,584	4,326
Middlings .....	"	4,875	3,429	8,304	8,717	2,056
All Other Offal* .....	"	3,612	2,752	6,364	5,823	3,634
Oatmeal .....	Pounds	184,224	39,322	223,546	394,590	1,165,318
Rolled Oats .....	"	6,003,000	5,390,956	11,393,956	8,827,008	5,741,651
Corn Flour and Meal .....	"	1,933,212	-	1,933,212	2,518,412	417,558
Barley, Pot and Pearl .....	"	15,680	111,720	127,400	272,938	213,396
Buckwheat Flour .....	"	40,414	-	40,414	73,036	12,500
<u>Ground Feed</u>						
Ground Oats .....	Pounds	5,825,871	2,953,538	8,779,409	9,329,686	1,637,420
Cracked Corn .....	"	5,705,717	218,319	5,924,036	6,798,818	751,725
Ground Barley .....	"	3,337,736	2,808,261	6,145,997	4,753,022	540,708
Mixed Grain .....	"	65,920,260	2,875,823	68,796,083	59,353,347	432,745

\* Including Coarse Grain Offal

Flour production for the month of June, 1940 amounted to 1,170,238 barrels compared with 1,187,875 barrels for the same month last year, a decrease of 17,637 barrels. Not only did the production fall below the same month last year but was the smallest month's production in the present crop year. However, for the eleven-month period in 1939-40 total production exceeded the same period last year by 2,398,226 barrels. It may be noted here that exports for the same eleven months exceeded the period last year by 2,266,635 barrels. Exports for June, 1940 amounted to 509,308 barrels compared with 401,189 barrels last year.

Following the flour trend, wheat offal was lower in comparison with June a year ago, with bran 17,179 (17,733) tons, shorts 16,874 (19,584) tons, and middlings 8,304 (8,717) tons.

Cereal production for June, 1940 was as follows with figures for the same month last year in brackets and the quantities in pounds: Oatmeal, 223,546 (394,590); Rolled Oats, 11,393,956 (8,827,008); Corn Flour and Meal, 1,933,212 (2,518,412); Pot and Pearl Barley, 127,400 (272,938); and Buckwheat Flour, 40,414 (73,036).

In the animal feed group, ground barley and mixed grain increased over the same month last year while ground oats and cracked corn decreased. The four items compared as follows: Ground Oats, 8,779,409 (9,329,686) pounds; Cracked Corn, 5,924,036 (6,798,818) pounds; Ground Barley, 6,145,997 (4,753,022) pounds; and Mixed Grain, 68,796,083 (59,353,347) pounds.

Total flour stocks for the month of June, 1940 amounted to 1,081,682 barrels compared with 1,075,904 barrels for the same month a year ago and 1,102,683 barrels for the previous month.



### SUMMARY OF MILL GRINDINGS

The following table summarizes the mill grind of wheat, oats, corn, barley and mixed grain for eleven months of the crop year 1939-40, with comparative figures for 1938-39:-

Months	Wheat	Oats	Corn	Barley	Mixed Grain
(bushels)					
August, 1939 .....	6,383,258	1,095,328	213,394	119,095	1,361,999
September .....	8,894,675	1,795,844	318,184	172,562	1,764,365
October .....	9,383,192	1,683,187	282,950	167,169	2,270,654
November .....	8,855,723	1,658,254	250,074	196,822	2,759,117
December .....	7,202,927	1,696,461	335,949	168,450	3,078,599
January, 1940 .....	5,723,460	2,090,244	279,651	158,818	2,943,416
February .....	5,599,574	1,690,868	198,325	134,849	2,415,934
March .....	5,632,085	1,264,243	197,405	115,875	2,455,550
April .....	6,035,930	817,269	208,677	127,927	2,157,642
May .....	5,775,393	1,141,081	195,700	135,647	2,106,434
June .....	5,262,534	964,541	203,573	133,448	1,536,098
T O T A L S .....	74,748,751	15,897,320	2,683,882	1,630,662	24,849,808
TOTALS LAST YEAR .....	63,771,969	12,488,841	2,735,901	1,351,777	20,410,570

### SUMMARY OF MILL PRODUCTION

The following table summarizes the production of wheat flour, oatmeal, rolled oats and corn flour and meal for eleven months of the crop year 1939-40, including percentage of operation and wheat flour exports, with comparative figures for 1938-39:

Months	Wheat Flour		Oatmeal Pounds	Rolled Oats Pounds	Corn Flour and Meal Pounds	Wheat Flour Exported Barrels
	Percentage of operation	Quantity Barrels				
August, 1939 .....	59.7	1,382,158	514,718	13,885,982	2,270,098	379,276
September .....	87.3	1,927,102	803,604	24,276,286	2,980,400	416,553
October .....	94.1	2,089,562	731,379	21,417,018	3,158,488	444,144
November .....	86.6	1,960,429	2,873,646	18,429,532	3,404,476	572,810
December .....	70.8	1,599,966	4,838,664	17,595,082	1,240,680	902,714
January, 1940 .....	54.9	1,266,303	3,787,268	23,330,918	1,747,317	725,316
February .....	55.7	1,246,798	969,502	22,804,540	1,439,600	559,338
March .....	57.2	1,257,034	580,906	15,316,966	1,588,868	715,579
April .....	58.6	1,344,293	310,780	7,882,128	1,850,751	519,870
May .....	55.5	1,282,906	387,336	12,922,396	2,052,654	722,595
June .....	55.3	1,170,238	223,546	11,393,956	1,933,212	509,308
T O T A L S .....		16,526,789	16,021,349	189,254,804	23,666,544	6,467,503
TOTALS LAST YEAR .....		14,128,563	12,183,349	138,396,344	25,840,031	4,200,868

The following table shows the production of ground oats for the calendar years 1934-39:

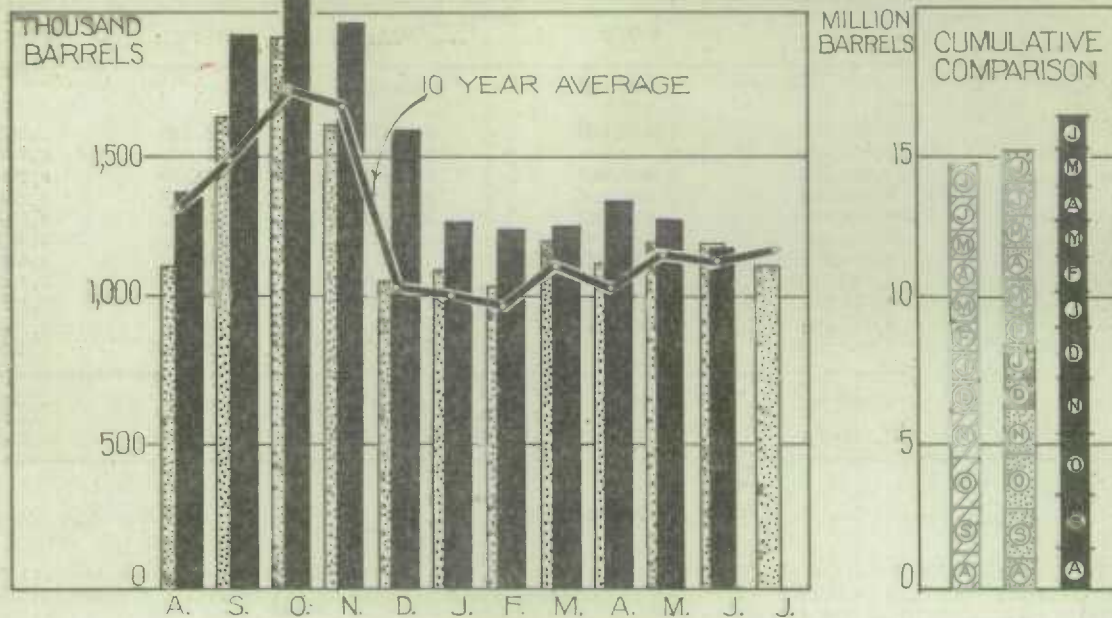
Months	1934	1935	1936	1937	1938	1939*
(pounds)						
January .....	7,394,091	7,097,044	8,232,834	9,390,540	9,905,551	9,330,160
February .....	6,819,996	6,844,063	7,650,395	8,549,677	8,709,653	9,944,119
March .....	7,942,004	7,368,595	8,167,014	9,823,045	8,864,979	11,872,433
April .....	6,965,147	7,451,039	7,659,780	8,937,714	8,963,050	10,651,669
May .....	6,617,727	6,998,026	6,057,642	7,810,027	7,288,018	9,229,825
June .....	5,664,907	5,927,378	6,480,628	6,216,677	6,036,871	8,121,362
July .....	5,143,190	5,267,690	6,550,509	5,613,135	5,672,395	7,929,362
August .....	4,784,757	5,079,645	6,693,371	6,465,518	6,611,409	7,719,250
September .....	5,727,054	6,663,434	8,388,158	8,130,560	8,392,745	10,915,315
October .....	7,624,248	8,674,143	11,037,672	10,563,219	11,350,499	12,414,382
November .....	9,084,736	10,385,521	11,681,034	11,616,874	11,729,567	14,082,098
December .....	7,489,505	8,734,270	10,815,220	9,049,416	10,202,217	13,229,731
T O T A L S .....	81,257,362	86,490,848	99,414,257	102,166,403	103,727,854	125,439,706

\* Preliminary from August to December, 1939.

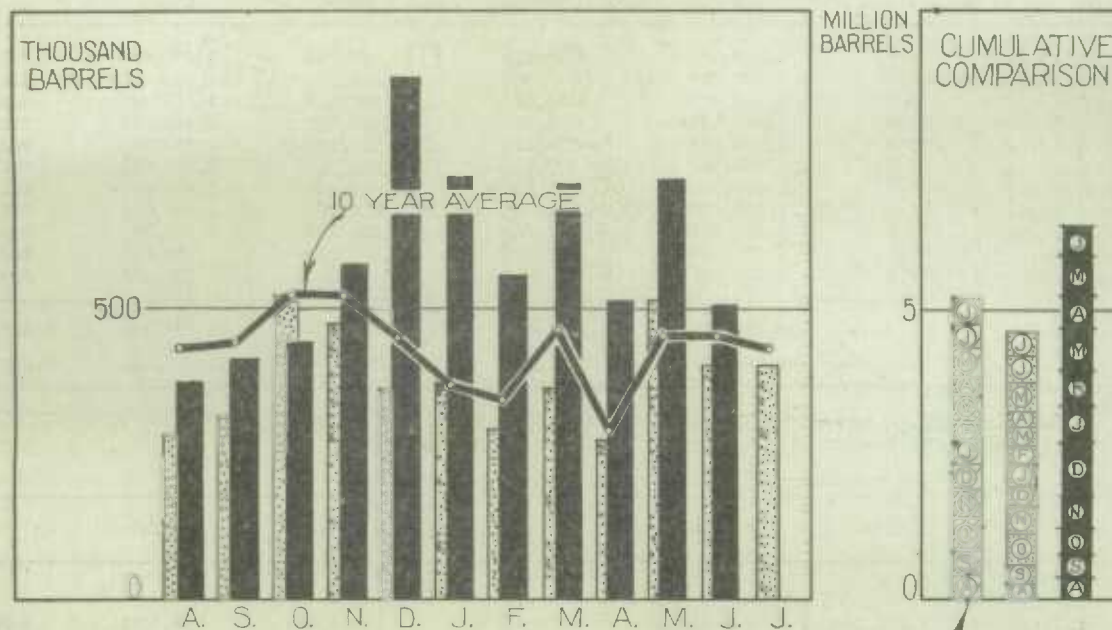


1010633754

## WHEAT FLOUR PRODUCTION



## WHEAT FLOUR EXPORT



### LEGEND

