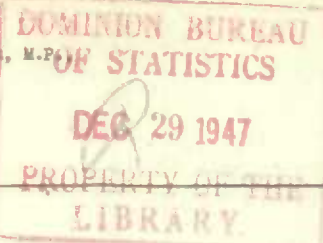


C1

Published by Authority of the Hon. James A. MacKinnon, M.P.
Minister of Trade and Commerce

DOMINION BUREAU OF STATISTICS - CANADA
AGRICULTURAL DIVISION

Dominion Statistician: Herbert Marshall
Director, Agricultural Division: C. V. Parker
Chief, Crop Branch: W. D. Porter



CANADIAN MILLING STATISTICS

NOVEMBER 1947

Ottawa, December 26, 1947.- Flour production in Canadian mills for the month of November amounted to 2,159,483 barrels compared with 2,518,555 barrels for the same month a year ago. The smaller wheat crop of 1947 has already begun to reflect itself in the volume of output of flour mills, and although production for the first four months of the current crop year amounting to 9,584,170 barrels exceeded the same period in 1946-47 by 246,365 barrels, it is not felt that production for succeeding months will measure up so well.

Mills reporting November operations had a total milling capacity of 97,130 barrels per 24-hour day and over a 26-day working period in the month 85.5 per cent of this was effective. Mills reporting for October operated 99.6 per cent of their combined rated capacity.

Wheat milled into flour for November was 9,795,662 bushels as against 11,239,067 bushels in the same month last year. Total wheat used for flour in the four months ending with November amounted to 43,378,380 bushels compared with 41,558,918 bushels for the same period in 1946-47.

Stocks of wheat in flour mills at the end of November 1947 amounted to 6,664,400 bushels while at the end of October the stocks were 6,181,413 bushels.

MILL GRINDINGS

The following table shows the amount of wheat, oats, corn, barley, buckwheat and mixed grain milled for the month of November, 1947, by merchant and custom mills in Canada according to divisions, with comparative totals for the same month last year and stocks on hand at November 30, 1947 (in bushels):

| Grain | Quantities Ground | | | | Stocks on Hand November 30, 1947 | | |
|---------------------------|-------------------|--------------|---------------------|---------------------|----------------------------------|--------------|-------------------------|
| | Merchant Mills | Custom Mills | Total November 1947 | Total November 1946 | Merchant Mills | Custom Mills | Total November 30, 1947 |
| EASTERN DIVISION | | | | | | | |
| Wheat - | | | | | | | |
| Manitoba Spring | 4,202,967 | - | 4,202,967 | 4,923,462 | 2,826,046 | - | 2,826,046 |
| Ontario Winter | 328,035 | - | 328,035 | 261,389 | 1,280,659 | - | 1,280,659 |
| Durum | 78,250 | - | 78,250 | 64,991 | 131,968 | - | 131,968 |
| Garnet | - | - | - | - | - | - | - |
| All Other | 81,526 | 205,532 | 287,058 | 296,224 | 134,016 | 228,777 | 362,793 |
| Total Wheat | 4,690,778 | 205,532 | 4,896,310 | 5,546,066 | 4,372,689 | 228,777 | 4,601,466 |
| Feed Wheat | 111,282 | 160,653 | 271,935 | 184,702 | 309,885 | 16,800 | 326,685 |
| Oats | 577,846 | 561,498 | 1,139,344 | 1,361,921 | 664,856 | 239,990 | 904,846 |
| Corn | 42,372 | 57,871 | 100,243 | 194,469 | 179,217 | 23,745 | 202,962 |
| Barley | 183,417 | 316,637 | 500,054 | 670,808 | 291,145 | 188,580 | 479,725 |
| Buckwheat | 1,780 | 7,620 | 9,400 | 15,799 | 28,857 | 9,126 | 37,983 |
| Mixed Grain | 110,393 | 1,473,867 | 1,584,260 | 2,224,181 | 350 | 31,809 | 32,159 |
| WESTERN DIVISION | | | | | | | |
| Wheat - | | | | | | | |
| Manitoba Spring | 4,361,040 | - | 4,361,040 | 5,216,853 | 1,646,641 | - | 1,646,641 |
| Ontario Winter | - | - | - | - | - | - | - |
| Durum | 12,705 | - | 12,705 | 6,765 | - | - | - |
| Garnet | - | - | - | 5,000 | - | - | - |
| All Other | 49,637 | 475,970 | 525,607 | 464,383 | 249,284 | 167,009 | 416,293 |
| Total Wheat | 4,423,382 | 475,970 | 4,899,352 | 5,693,001 | 1,895,925 | 167,009 | 2,062,934 |
| Feed Wheat | 66,249 | 6,444 | 72,693 | 114,567 | 124,573 | - | 124,573 |
| Oats | 1,119,656 | 89,385 | 1,209,041 | 1,338,167 | 875,087 | 24,524 | 899,611 |
| Corn | 625 | 17 | 642 | 14,553 | 5,612 | 10 | 5,622 |
| Barley | 242,745 | 110,426 | 353,171 | 339,332 | 304,734 | 35,557 | 340,291 |
| Buckwheat | - | - | - | - | 2,717 | - | 2,717 |
| Mixed Grain | 138,039 | 105,156 | 243,195 | 229,659 | 3,822 | 275 | 4,097 |
| DOMINION OF CANADA | | | | | | | |
| Wheat - | | | | | | | |
| Manitoba Spring | 8,564,007 | - | 8,564,007 | 10,140,315 | 4,472,687 | - | 4,472,687 |
| Ontario Winter | 328,035 | - | 328,035 | 261,389 | 1,280,659 | - | 1,280,659 |
| Durum | 90,955 | - | 90,955 | 71,756 | 131,968 | - | 131,968 |
| Garnet | - | - | - | 5,000 | - | - | - |
| All Other | 131,163 | 681,502 | 812,665 | 760,607 | 383,300 | 395,786 | 779,086 |
| Total Wheat | 9,114,160 | 681,502 | 9,795,662 | 11,239,067 | 6,268,614 | 395,786 | 6,664,400 |
| Feed Wheat | 177,531 | 167,097 | 344,628 | 299,269 | 434,458 | 16,800 | 451,258 |
| Oats | 1,697,502 | 650,883 | 2,348,385 | 2,700,088 | 1,539,943 | 264,514 | 1,804,457 |
| Corn | 42,997 | 57,888 | 100,885 | 209,022 | 184,829 | 23,755 | 208,584 |
| Barley | 428,162 | 427,063 | 855,225 | 1,010,140 | 595,879 | 224,137 | 820,016 |
| Buckwheat | 1,780 | 7,620 | 9,400 | 15,799 | 31,574 | 9,126 | 40,700 |
| Mixed Grain | 248,432 | 1,579,023 | 1,827,455 | 2,453,840 | 4,172 | 32,084 | 36,256 |

Price: 50 cents a year.

MILLING

The following table shows the production from wheat and coarse grains ground in merchant and custom mills in Canada for the month of November 1947, according to divisions, with comparative totals for the same month last year and stocks on hand at November 30, 1947:

| Products | Unit of Measure | Production from Grindings | | | | Stocks on Hand November 30, 1947 |
|---|----------------------|---------------------------|---------------------|------------------------|------------------------|-------------------------------------|
| | | Eastern Division | Western Division | Total November 1947 | Total November 1946 | |
| <hr/> | | | | | | |
| | Barrels (196 lb.) | WHEAT FLOUR | | | | |
| Spring No. 1 or Top Patent, including Semolina | " | 168,793 | 238,089 | 406,882 | 509,750 | 138,192 |
| Spring No. 2 Patent | " | 177,886 | 215,486 | 393,372 | 588,517 | 113,543 |
| Spring No. 3 Patent (Strong Bakers or Export Patent) | " | 542,886 | 462,679 | 1,005,565 | 1,036,179 | 213,141 |
| Whole Wheat and Graham Flour | " | 7,005 | 9,856 | 16,861 | 19,646 | 10,398 |
| Ontario Winter Wheat Flour | " | 72,989 | - | 72,989 | 64,913 | 18,651 |
| Durum Semolina and Flour | " | 18,648 | - | 18,648 | 16,310 | 1,039 |
| Lower Grades of Flour | " | 26,646 | 16,369 | 43,015 | 71,537 | 29,767 |
| All Other | " | 72,746 | 129,405 | 202,151 | 211,703 | 170,729 |
| <hr/> | | | | | | |
| Total Flour | " | 1,087,599 | 1,071,884 | 2,159,483 | 2,518,555 | 695,460 |
| <hr/> | | | | | | |
| | Pounds | SUNDRY CEREALS | | | | |
| Oatmeal | " | 72,716 | 359,814 | 432,530 | 1,592,524 | 281,577 |
| Rolled Oats | " | 7,346,144 | 9,260,298 | 16,606,442 | 21,266,177 | 9,618,751 |
| Corn Flour and Meal | " | 1,045,720 | - | 1,045,720 | 1,853,564 | 467,547 |
| Barley, Pot and Pearl | " | 332,433 | 337,610 | 670,043 | 1,040,809 | 403,051 |
| Buckwheat Flour | " | 241,300 | - | 241,300 | 393,808 | 83,100 |
| <hr/> | | | | | | |
| | | GROUND FEED | | | | |
| Feed Wheat | " | 16,313,454 | 4,344,660 | 20,658,114 | 17,937,535 | 688,715 |
| Ground Oats | " | 26,841,240 | 21,041,650 | 47,882,890 | 48,403,507 | 4,473,036 |
| Cracked Corn | " | 2,576,761 | 35,952 | 2,612,713 | 4,639,929 | 116,978 |
| Ground Barley | " | 23,200,036 | 16,163,540 | 39,363,576 | 46,356,889 | 1,341,092 |
| Mixed Grain | " | 71,018,920 | 10,851,942 | 81,870,862 | 109,107,708 | 1,961,856 |
| <hr/> | | | | | | |
| | Tons | MILLFEEDS | | | | |
| Bran | " | 17,356 | 15,288 | 32,644 | 37,876 | 6,670 |
| Shorts | " | 13,770 | 16,898 | 30,668 | 34,260 | 4,091 |
| Middlings | " | 6,712 | 6,503 | 13,215 | 13,572 | 3,765 |
| <hr/> | | | | | | |
| T o t a l | " | 37,838 | 38,689 | 76,527 | 85,708 | 14,526 |
| <hr/> | | | | | | |
| All Other Offal* | " | 3,181 | 4,278 | 7,459 | 11,278 | 2,028 |
| <hr/> | | | | | | |
| Total Offal | " | 41,019 | 42,967 | 83,986 | 96,986 | 16,554 |

* Including Coarse Grain Offal.

Ontario winter wheat flour production for November 1947 amounted to 72,989 barrels, while for the same month last year the amount was 64,913 barrels. Total production for the four months of this crop year ending with November amounted to 278,565 barrels compared with 311,549 barrels for the same period in 1946-47.

Wheat flour exported for the month under review amounted to 1,197,155 barrels, bringing the total exported for four months of this crop year to 5,618,473 barrels against 5,566,919 barrels for the same four months a year ago.

Millfeed production for November followed the lower trend of flour amounting to 76,527 tons compared with 85,708 tons for the same month of 1946. This was comprised of bran 32,644 (37,876) tons, shorts 30,668 (34,260) tons, and middlings 13,215 (13,572) tons. Millfeed total for the first four months of the current crop year was 338,515 tons while for the same period of 1946-47 the total was 318,991 tons.

Total ground feeds for the month of November were lower than for the same month in 1946 amounting to 192,388,155 pounds against 225,445,568 pounds. The items in this group were as follows with the comparative figures in brackets and the quantities in pounds: Feed Wheat 20,658,114 (17,937,535); Ground Oats 47,882,890 (48,403,507); Cracked Corn 2,612,713 (4,639,929); Ground Barley 39,363,576 (45,356,889); and Mixed Grain 81,870,862 (109,107,708).

SUMMARY OF MILL GRINDINGS

The following table summarizes the mill grind of wheat, oats, corn, barley, buckwheat, rye and mixed grain for the first four months of the crop year 1947-48, with comparative figures for 1946-47:

| Months | Wheat for Flour | Feed Wheat | Oats | Corn | Barley | Buckwheat | Rye | Mixed Grain |
|------------------------|-----------------|------------|-----------|---------|-----------|-----------|--------|-------------|
| - bushels - | | | | | | | | |
| August, 1947 | 10,950,530 | 321,677 | 2,266,393 | 164,976 | 844,173 | 750 | - | 1,322,035 |
| September | 11,199,740 | 315,896 | 2,388,779 | 176,866 | 772,155 | 327 | 1,497 | 1,499,891 |
| October | 11,432,448 | 348,131 | 2,611,175 | 135,643 | 945,755 | 8,127 | 1,144 | 1,799,120 |
| November | 9,795,662 | 344,628 | 2,348,385 | 100,885 | 853,225 | 9,400 | 690 | 1,827,455 |
| TOTALS | 43,378,380 | 1,328,332 | 9,614,732 | 578,370 | 3,415,308 | 18,604 | 3,331 | 6,448,501 |
| TOTALS LAST YEAR | 41,588,918 | 933,331 | 9,776,779 | 776,146 | 3,509,961 | 27,239 | 31,896 | 8,122,456 |

SUMMARY OF MILL PRODUCTION

The following table summarizes the production of wheat flour, oatmeal, rolled oats, corn flour and meal and millfeeds for the first four months of the crop year 1947-48, including percentage of operation and wheat flour exports with comparative figures for 1946-47:

| | Wheat Flour | | Oatmeal | Rolled Oats | Corn Flour and Meal | Millfeeds | Wheat Flour Exports |
|------------------------|-------------------------|----------------------------|-----------|-------------|---------------------|-----------|---------------------|
| | Percentage of Operation | Quantity Barrels (196 lb.) | Pounds | Pounds | Pounds | Tons | Barrels (196 lb.) |
| August, 1947 | 96.2 | 2,412,394 | 306,920 | 13,571,132 | 775,180 | 85,648 | 1,545,784 |
| September | 103.2 | 2,481,189 | 235,864 | 14,173,910 | 1,148,972 | 87,393 | 1,292,628 |
| October | 99.6 | 2,531,104 | 442,332 | 18,392,316 | 1,226,848 | 88,947 | 1,582,906 |
| November | 85.5 | 2,159,483 | 432,530 | 16,606,442 | 1,045,720 | 76,527 | 1,197,155 |
| TOTALS | | 9,584,170 | 1,417,646 | 62,743,800 | 4,196,720 | 338,515 | 5,618,473 |
| TOTALS LAST YEAR | | 9,337,805 | 4,408,713 | 82,421,487 | 6,673,480 | 318,991 | 5,566,919 |

WHEAT FLOUR EXPORTS

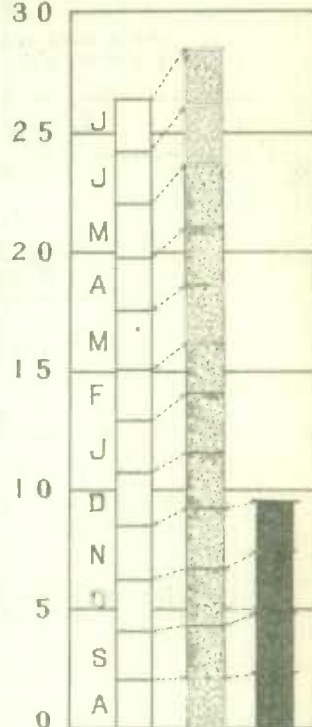
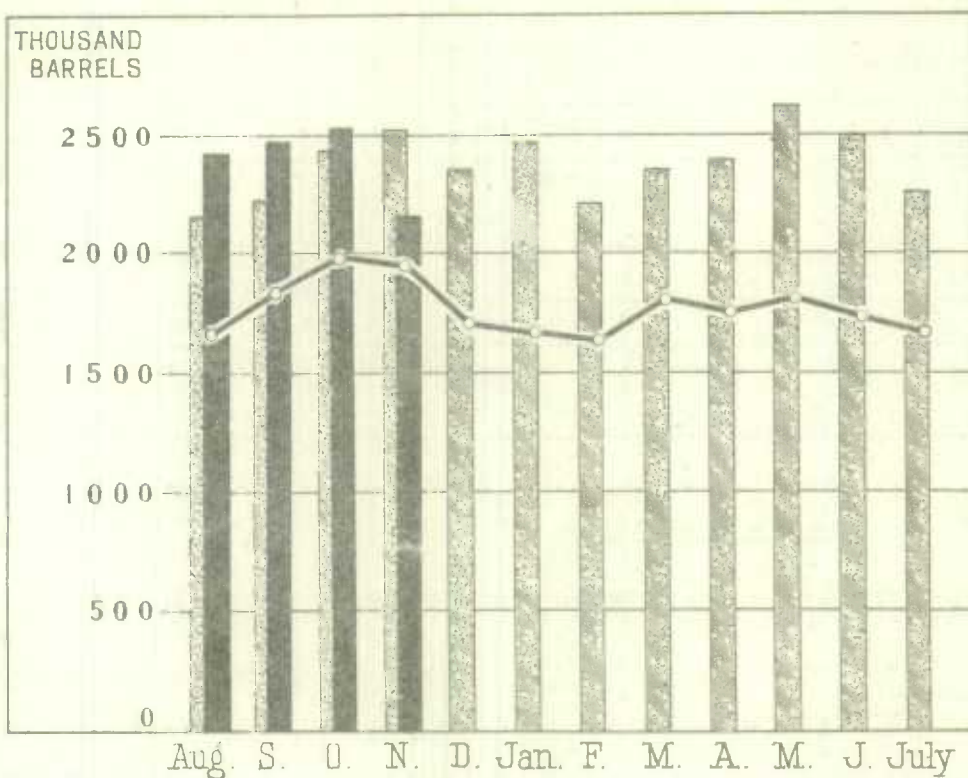
| Months | 1943 | 1944 | 1945 | 1946 | 1947 |
|-----------------|------------|------------|------------|------------|-----------|
| - barrels - | | | | | |
| January | 1,075,778 | 1,125,034 | 840,280 | 1,577,690 | 1,388,126 |
| February | 933,552 | 854,272 | 1,031,670 | 783,979 | 1,244,597 |
| March | 1,290,999 | 1,226,281 | 1,237,966 | 1,612,545 | 1,380,314 |
| April | 1,218,925 | 1,542,830 | 1,367,550 | 1,500,079 | 1,580,686 |
| May | 1,210,414 | 1,575,589 | 1,401,502 | 1,744,477 | 2,307,812 |
| June | 1,149,452 | 1,333,069 | 1,612,599 | 1,314,018 | 2,341,605 |
| July | 1,208,334 | 997,755 | 1,148,464 | 1,316,074 | 1,641,321 |
| August | 1,121,568 | 753,462 | 947,729 | 1,401,378 | 1,545,784 |
| September | 873,817 | 1,215,683 | 722,926 | 906,762 | 1,292,628 |
| October | 849,886 | 1,090,666 | 1,163,414 | 1,282,535 | 1,582,906 |
| November | 857,691 | 981,620 | 1,124,976 | 1,277,268 | 1,197,155 |
| December | 1,106,479 | 1,242,370 | 662,270 | 800,943 | |
| TOTALS | 12,896,995 | 13,938,631 | 13,261,346 | 15,517,748 | |



1010633687

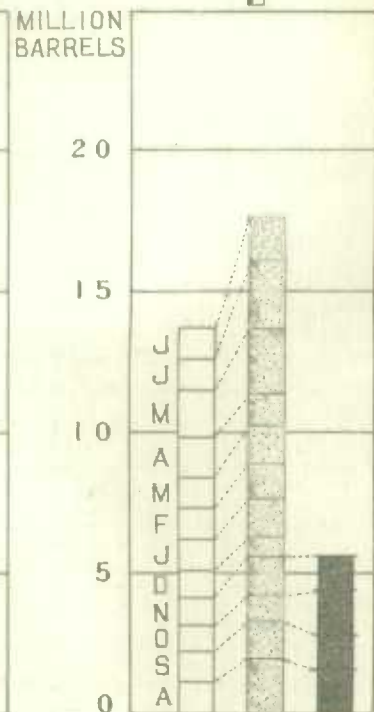
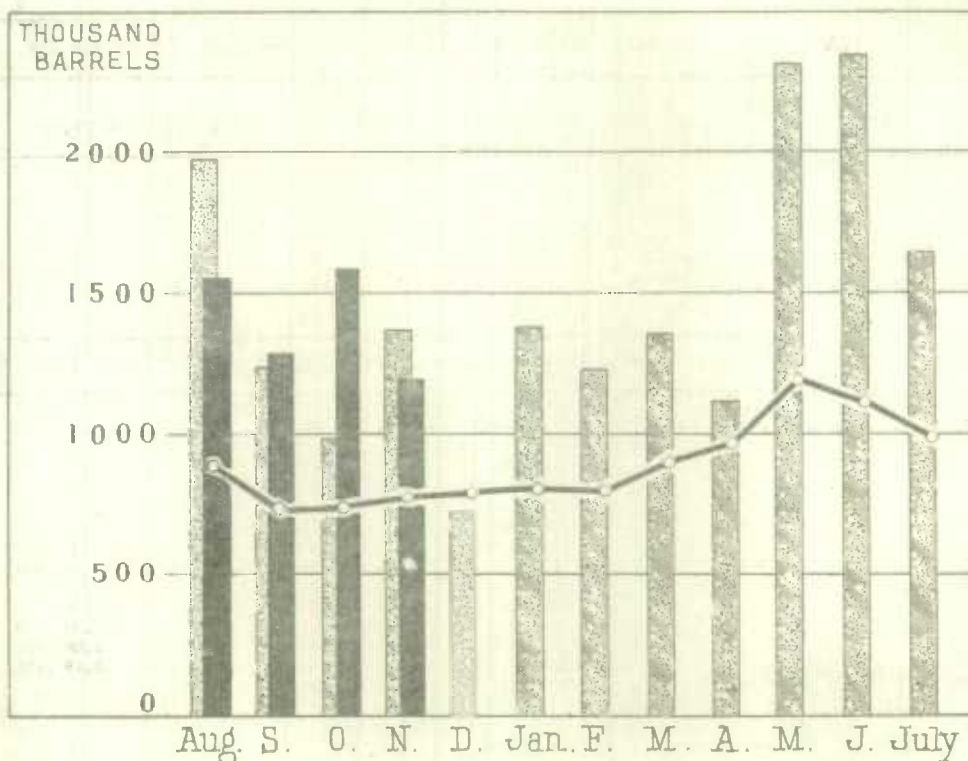
WHEAT FLOUR PRODUCTION

MILLION
BARRELS
30



↓
CUMULATIVE
COMPARISON
↑

WHEAT FLOUR EXPORTS



LEGEND

