

DOMINION BUREAU OF STATISTICS - CANADA
AGRICULTURAL DIVISIONDominion Statistician: Herbert Marshall
Director, Agricultural Division: C. V. Parker
Chief, Crop Branch: W. D. Porter

CANADIAN MILLING STATISTICS

JULY 1947

Ottawa, August 28, 1947.- Wheat flour production for Canadian mills for the month of July amounted to 2,264,983 barrels compared with 2,164,145 barrels for the same month last year. Monthly production exceeded the 2 1/2 million mark twice during the current crop year, in November and May. Total flour production for this crop year topped all previous records, amounting to 28,518,602 barrels compared with 26,435,341 barrels for 1945-46, an increase of 2,083,261 barrels in the yearly output.

Mills reporting July operations had a total milling capacity of 94,730 barrels per 24-hour day, and over a 26-day working period in the month 92.0 per cent of this was effective. Mills reporting in June operated at 108.4 per cent of their combined rated capacity. The weighted average of working capacity for the current crop year was 100.8 per cent compared with 96.5 per cent for 1945-46.

Wheat used in the manufacture of flour for July amounted to 10,188,983 bushels compared with 9,625,556 bushels for the corresponding month last year. This brought the total wheat milled for flour for the current crop year ending July to 127,484,924 bushels as against 117,609,336 bushels for 1945-46. Ontario winter wheat milled for the year and included in the total amounted to 3,155,560 bushels while for 1945-46 the amount was 4,654,458 bushels.

Stocks of wheat in flour mills at the close of July 1947 amounted to 5,816,973 bushels, together with 565,694 bushels of feed wheat.

MILL GRINDINGS

The following table shows the amount of wheat, oats, corn, barley, buckwheat and mixed grain milled for the month of July 1947, by merchant and custom mills in Canada according to divisions, with comparative totals for the same month last year and stocks on hand at July 31, 1947 (in bushels):

Grain	Quantities Ground				Stocks on Hand, July 31, 1947		
	Merchant Mills	Custom Mills	Total July 1947	Total July 1946	Merchant Mills	Custom Mills	Total July 31, 1947
EASTERN DIVISION							
Wheat -							
Manitoba Spring	4,684,974	-	4,684,974	4,238,531	2,233,789	-	2,233,789
Ontario Winter	155,972	-	155,972	282,694	416,050	-	416,050
Durum	55,700	-	55,700	-	13,281	-	13,281
Garnet	-	-	-	-	-	-	-
All Other	36,368	193,157	229,525	176,528	134,301	207,134	341,435
Total Wheat	4,933,014	193,157	5,126,171	4,697,753	2,797,421	207,134	3,004,555
Feed Wheat	115,870	155,599	271,469	-	327,485	4,247	331,732
Oats	457,906	673,583	1,131,489	1,032,575	414,829	208,723	623,552
Corn	34,036	113,225	147,261	139,407	160,606	26,306	186,912
Barley	158,716	320,462	479,178	494,895	270,888	123,409	394,297
Buckwheat	1,200	-	1,200	250	5,882	66	5,948
Mixed Grain	98,898	1,057,491	1,156,389	1,302,336	600	21,260	21,860
WESTERN DIVISION							
Wheat -							
Manitoba Spring	4,586,635	-	4,586,635	4,515,579	2,584,964	-	2,584,964
Ontario Winter	-	-	-	-	-	-	-
Durum	8,082	-	8,082	9,272	-	-	-
Garnet	-	-	-	-	-	-	-
All Other	19,746	448,349	468,095	402,952	91,825	135,629	227,454
Total Wheat	4,614,643	448,349	5,062,812	4,927,803	2,676,789	135,629	2,812,418
Feed Wheat	55,860	8,964	64,824	-	233,962	-	233,962
Oats	808,051	100,047	908,098	1,103,977	1,084,492	18,804	1,103,296
Corn	1,348	48	1,396	829	8,093	37	8,130
Barley	163,612	101,909	264,521	178,542	249,388	16,869	266,257
Buckwheat	-	-	-	-	1,967	-	1,967
Mixed Grain	157,054	74,929	231,983	355,945	31,511	264	31,775
DOMINION OF CANADA							
Wheat -							
Manitoba Spring	9,271,609	-	9,271,609	8,754,110	4,818,753	-	4,818,753
Ontario Winter	155,972	-	155,972	282,694	416,050	-	416,050
Durum	63,782	-	63,782	9,272	13,281	-	13,281
Garnet	-	-	-	-	-	-	-
All Other	56,114	641,506	697,620	579,480	226,126	342,763	568,889
Total Wheat	9,547,477	641,506	10,188,983	9,625,556	5,474,210	342,763	5,816,973
Feed Wheat	171,730	164,563	336,293	-	561,447	4,247	565,694
Oats	1,265,957	773,630	2,039,587	2,126,552	1,499,321	227,527	1,726,848
Corn	35,384	113,273	148,657	140,236	168,699	26,343	195,042
Barley	321,328	422,371	743,699	673,437	520,276	140,278	660,554
Buckwheat	1,200	-	1,200	250	7,849	66	7,915
Mixed Grain	255,952	1,132,420	1,388,372	1,658,281	32,111	21,524	53,635

Price: 50 cents a year.

Products	Unit of Measure	Production from Grindings				Stocks on Hand July 31, 1947
		Eastern Division	Western Division	Total July 1947	Total July 1946	
	Barrels (196 lb.)			<u>WHEAT FLOUR</u>		
Spring No. 1 or Top Patent, including Semolina	"	105,658	190,181	295,839	320,271	78,432
Spring No. 2 Patent	"	204,889	220,792	425,681	555,258	61,629
Spring No. 3 Patent (Strong Bakers or Export Patent)	"	681,960	541,262	1,223,222	-	266,486
Whole Wheat and Graham Flour	"	12,079	8,943	21,022	-	7,015
Ontario Winter Wheat Flour	"	37,479	-	37,479	63,358	16,277
Durum Semolina and Flour	"	13,385	-	13,385	-	92
Lower Grades of Flour	"	39,206	43,215	82,421	41,234	14,244
All Other	"	51,331	114,603	165,934	1,184,024	131,353
TOTAL FLOUR	"	1,145,987	1,118,996	2,264,983	2,164,145	575,528

	Pounds			GROUND FEED	
Feed Wheat	"	16,288,116	3,880,040	20,168,156	-
Ground Oats	"	32,396,071	17,252,030	49,648,101	33,289,265
Cracked Corn	"	4,177,160	78,176	4,255,336	3,996,903
Ground Barley	"	22,719,697	12,254,121	34,973,818	31,192,757
Mixed Grain	"	51,405,929	10,410,872	61,816,801	77,589,757

	<u>Tons</u>	<u>MILLFEEDS</u>				
Bran	"	17,925	16,256	34,181	31,891	4,756
Shorts	"	14,080	17,126	31,206	28,616	4,292
Middlings	"	6,803	6,019	12,822	11,657	2,610
T o t a l	"	38,808	39,401	78,209	72,164	11,658
All Other Offal*	"	2,850	3,011	5,861	9,080	1,378
TOTAL OFFAL	"	41,658	42,412	84,070	81,244	13,036

Ground feeds for July 1947 were as follows with the quantities in pounds and the comparative figures for last year in brackets: Feed Wheat 20,168,156 (no comparable figure); Ground Oats 49,648,101 (33,289,265); Cracked Corn 4,255,336 (3,996,903); Ground Barley 34,973,818 (31,192,757); and Mixed Grain 61,816,801 (77,589,757).

SUMMARY OF MILL GRINDINGS

The following table summarizes the mill grind of wheat, oats, corn, barley, buckwheat, rye and mixed grain for the crop year 1946-47, with comparative figures for 1945-46:

Months	Wheat for Flour	Feed Wheat	Oats	Corn	Barley	Buckwheat	Rye	Mixed Grain
- bushels -								
August, 1946 ..	9,564,998	212,429	2,229,085	188,886	769,723	750	5,847	1,576,209
September	9,938,159	179,775	2,291,403	165,460	805,802	1,100	4,615	1,895,341
October	10,846,694	241,858	2,556,203	212,778	924,296	9,590	5,302	2,197,066
November	11,239,067	299,269	2,700,088	209,022	1,010,140	15,799	12,132	2,453,840
December	10,498,514	295,389	2,350,179	224,513	869,540	8,953	2,563	2,402,315
January, 1947 ..	11,077,206	323,937	2,370,934	237,628	732,068	3,455	5,009	2,225,871
February	9,917,926	291,189	2,108,168	245,277	587,449	4,472	5,216	2,307,109
March	10,492,910	281,245	2,513,830	262,715	530,504	490	4,285	2,276,615
April	10,790,154	326,990	2,507,175	162,284	581,867	-	6,319	2,080,910
May	11,742,167	308,645	2,785,306	145,914	771,844	-	7,407	1,941,934
June	11,188,146	343,191	2,612,573	147,771	712,347	450	8,568	1,559,249
July	10,188,983	336,293	2,039,587	148,657	743,699	1,200	11,413	1,588,372
T o t a l s	127,484,924	3,440,210	29,064,531	2,350,905	9,039,279	46,259	82,676	24,304,831
Totals Last Year	117,609,336	-	25,959,046	2,019,614	8,046,155	29,994	109,719	26,519,091

SUMMARY OF MILL PRODUCTION

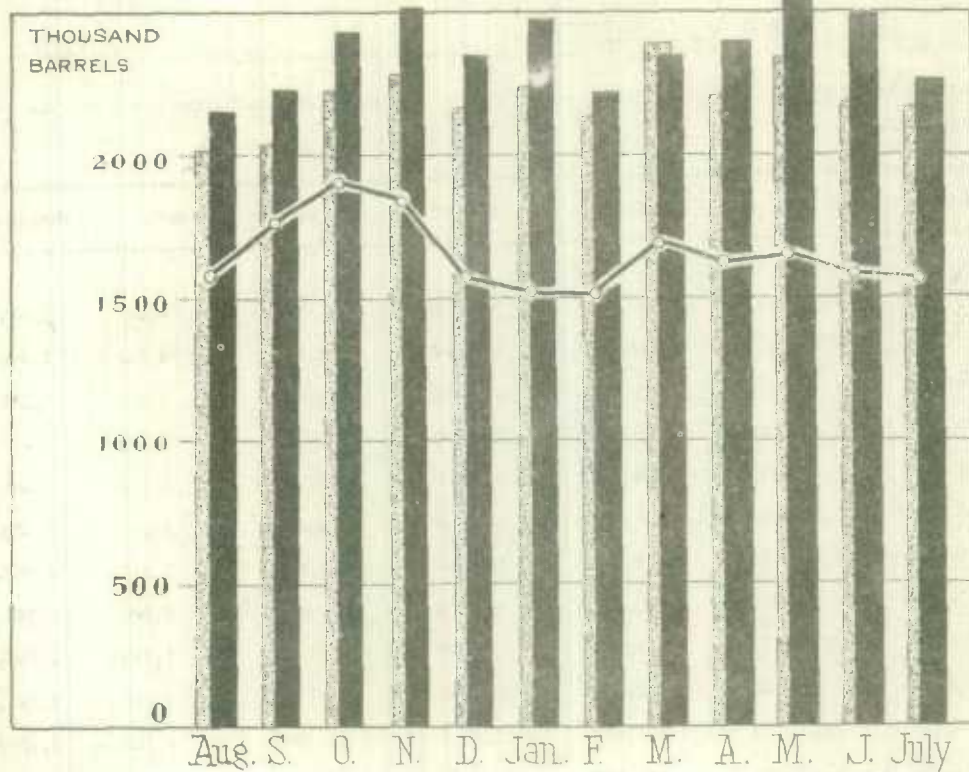
The following table summarizes the production of wheat flour, oatmeal, rolled oats, corn flour and meal and millfeeds for the crop year 1946-47, including percentage of operation and wheat flour exports with comparative figures for 1945-46:

Months	Wheat Flour		Oatmeal	Rolled Oats	Corn Flour and Meal	Millfeeds	Wheat Flour Exports
	Percentage of Operation	Quantity Barrels (196 lb.)	Pounds	Pounds	Pounds	tons	Barrels (196 lb.)
August, 1946 ..	86.5	2,158,627	1,069,198	18,873,790	1,754,984	72,320	1,977,008
September	100.6	2,227,748	866,084	20,010,688	1,161,104	77,376	1,236,125
October	101.4	2,432,875	880,907	22,270,832	1,903,828	83,587	985,736
November	103.9	2,518,555	1,592,524	21,266,177	1,853,564	85,708	1,368,060
December	101.2	2,350,040	931,222	17,681,431	3,388,626	80,577	721,744
January, 1947 .	103.1	2,477,865	593,203	17,041,208	3,633,456	83,543	1,379,676
February	99.6	2,212,207	675,860	12,649,031	3,271,392	73,874	1,230,635
March	99.9	2,354,128	975,172	16,687,556	2,935,982	79,671	1,356,020
April	105.6	2,399,074	915,262	14,072,832	842,804	81,179	1,114,377
May	108.8	2,625,176	786,862	14,415,797	507,358	89,825	2,307,812
June	108.4	2,497,324	737,600	14,919,878	614,072	84,783	2,341,605
July	92.0	2,264,983	213,682	10,133,684	679,156	78,209	1,641,321
T o t a l s ...	100.8	28,518,602	10,236,576	200,022,904	22,546,306	970,652	17,660,109
Totals Last Year	96.5	26,435,341	23,439,925	199,396,374	20,443,213	881,844	13,786,177



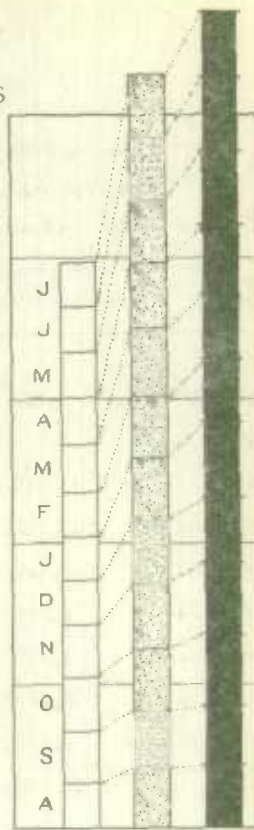
1010633683

WHEAT FLOUR PRODUCTION



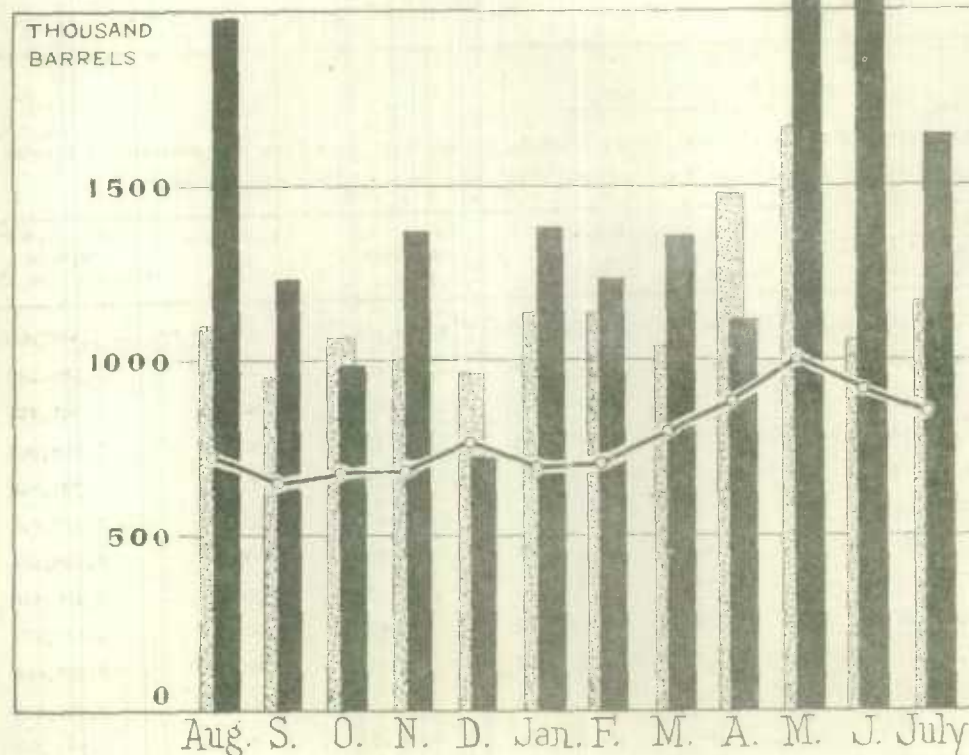
MILLION BARRELS
25

20
15
10
5
0



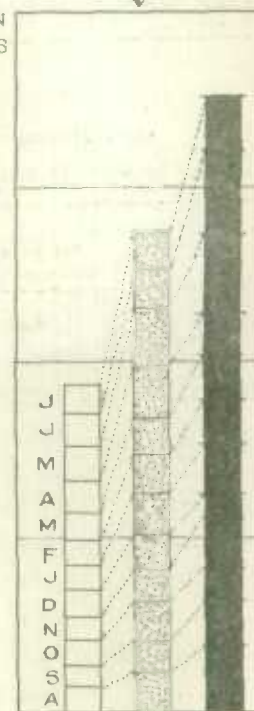
↑
CUMULATIVE
COMPARISON
↓

WHEAT FLOUR EXPORTS



MILLION BARRELS

15
10
5
0



LEGEND

