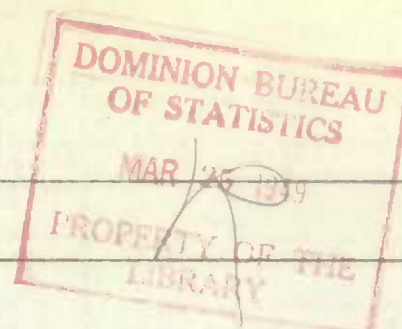


DOMINION BUREAU OF STATISTICS
AGRICULTURE DIVISION
OTTAWA, CANADA

Published by Authority of the Rt. Hon. C. D. Howe, M.P.,
Minister of Trade and Commerce

Dominion Statistician: Herbert Marshall
Director, Agriculture Division: C. V. Parker
Chief, Crops Section: W. D. Porter



CANADIAN MILLING STATISTICS

February 1949

Ottawa, March 24, 1949 - Wheat flour output from Canadian mills reporting for the month of February was 1,462,175 barrels against 1,793,017 barrels for the same month in 1948. This was the lowest monthly production during the current crop year, due in part to a shorter working period in the month. Flour production for the first seven months of 1948-49 amounted to 12,348,298 barrels, while for the same period in the previous crop year the amount was 14,908,592 barrels.

Mills reporting February operations had a total milling capacity of 98,230 barrels per 24-hour day and over a 24-day working period in the month 62.0 per cent of this was effective. Mills reporting in January operated 60.1 per cent of their combined rated capacity over a 25-day working period.

Wheat milled for flour in February amounted to 6,499,288 bushels compared with 8,132,337 bushels milled for the same month last year. Total wheat processed into flour for seven months of the current crop year ending with February was 55,304,129 bushels, while for a like period in 1947-48 the amount was 67,559,111 bushels.

Stocks of wheat in mill bins at the close of February 1949 amounted to 3,568,579 bushels for flour and 159,508 bushels of feed wheat.

MILL GRINDINGS

The following table shows the amount of wheat, oats, corn, barley, buckwheat and mixed grain milled for the month of February 1949, by merchant and custom mills in Canada according to divisions, with comparative totals for the same month last year and stocks on hand at February 28, 1949.

Grain	Quantities Ground				Stocks on Hand February 28, 1949		
	Merchant Mills	Custom Mills	Total February 1949	Total February 1948	Merchant Mills	Custom Mills	Total Feb. 28, 1949
EASTERN DIVISION							
Wheat -							
Manitoba Spring	2,787,625	-	2,787,625	3,124,778	2,289,772	-	2,289,772
Ontario Winter	220,377	-	220,377	235,224	664,701	-	664,701
Durum	93,545	-	93,545	101,457	26,536	-	26,536
Garnet	-	-	-	-	-	-	-
United States	-	-	-	164,084	-	-	-
All Other	49,900	144,560	194,460	255,478	113,844	230,969	344,813
Total Wheat	3,151,447	144,560	3,296,007	3,881,021	3,094,853	230,969	3,325,822
Feed Wheat	31,036	60,202	91,238	166,564	73,465	8,243	81,708
Oats	246,572	557,747	804,319	1,030,564	647,147	357,513	1,004,660
Corn	68,891	110,374	179,265	123,274	59,615	78,773	138,288
Barley	165,222	351,406	516,628	589,415	100,610	255,103	355,713
Buckwheat	2,380	943	3,323	1,130	15,520	5,785	21,305
Mixed Grain	92,398	1,474,892	1,567,290	1,334,605	1,140	15,217	16,357
WESTERN DIVISION							
Wheat -							
Manitoba Spring	3,022,409	-	3,022,409	3,744,471	141,372	-	141,372
Ontario Winter	-	-	-	-	-	-	-
Durum	26,422	-	26,422	14,628	3,940	-	3,940
Garnet	-	-	-	-	-	-	-
United States	-	-	-	-	-	-	-
All Other	85,230	69,220	154,450	492,017	-	97,545	97,545
Total Wheat	3,134,061	69,220	3,203,281	4,251,316	145,312	97,545	242,857
Feed Wheat	17,226	9,024	26,250	100,219	77,800	-	77,800
Oats	458,271	130,883	589,154	796,963	280,708	14,980	295,688
Corn	2,205	1,930	4,135	683	44,254	460	44,714
Barley	82,059	110,791	192,850	219,244	135,045	11,473	146,518
Buckwheat	-	-	-	-	2,810	-	2,810
Mixed Grain	84,816	97,512	182,328	200,561	36,133	50	36,183
DOMINION OF CANADA							
Wheat -							
Manitoba Spring	5,810,034	-	5,810,034	6,869,249	2,431,144	-	2,431,144
Ontario Winter	220,377	-	220,377	235,224	664,701	-	664,701
Durum	119,967	-	119,967	116,285	30,476	-	30,476
Garnet	-	-	-	-	-	-	-
United States	-	-	-	164,084	-	-	-
All Other	135,130	213,780	348,910	747,495	113,844	328,514	442,358
Total Wheat	6,285,508	213,780	6,499,288	8,132,337	3,240,165	328,514	3,568,679
Feed Wheat	48,282	69,226	117,488	266,783	151,265	8,243	159,508
Oats	704,843	688,630	1,393,473	1,827,527	927,855	372,493	1,300,348
Corn	71,096	112,304	183,400	123,957	103,769	79,233	183,002
Barley	247,281	462,197	709,478	808,659	235,655	266,576	502,231
Buckwheat	2,380	943	3,323	1,130	18,330	5,785	24,115
Mixed Grain	177,214	1,572,404	1,749,618	1,534,966	39,273	15,267	54,540

Price: 50 cents a year.

MILLING

The following table shows the production from wheat and coarse grains ground in merchant and custom mills in Canada for the month of February 1949, according to divisions, with comparative totals for the same month last year and stocks on hand at February 28, 1949:

Products	Unit of Measure	Production from Grindings				Stocks on Hand February 28, 1949
		Eastern Division	Western Division	Total February 1949	Total February 1948	
	Barrels (196 lb.)					
<u>WHEAT FLOUR</u>						
Spring No. 1 or Top Patent, including Semolina	"	75,117	177,830	252,947	264,921	143,886
Spring No. 2 Patent	"	155,957	184,687	340,644	335,653	120,129
Spring No. 3 Patent (Strong Bakers or Export Patent)	"	368,364	262,461	630,825	877,119	207,093
Whole Wheat and Graham Flour ..	"	7,857	10,837	18,694	17,290	12,502
Ontario Winter Wheat Flour	"	56,137	-	56,137	61,847	23,103
Durum Semolina and Flour	"	21,244	4,905	26,149	23,263	12,262
Lower Grades of Flour	"	18,650	24,455	43,105	42,388	50,014
All Other	"	42,519	51,155	93,674	170,536	170,868
TOTAL FLOUR	"	745,845	716,330	1,462,175	1,793,017	739,857
<u>SUNDRY CEREALS</u>						
	Pounds					
Oatmeal	"	286,748	262,838	549,586	372,636	349,147
Rollod Oats	"	994,513	4,680,226	5,674,739	12,987,844	8,100,687
Corn Flour and Meal	"	582,296	-	582,296	821,740	402,600
Barley, Pot and Pearl	"	84,888	186,396	271,284	1,029,620	379,566
Buckwheat Flour	"	104,711	-	104,711	32,971	87,050
<u>GROUND FEED</u>						
	Pounds					
Feed Wheat	"	5,474,280	1,575,480	7,049,760	15,974,550	264,070
Ground Oats	"	25,239,553	10,657,032	35,896,585	37,159,792	1,283,457
Cracked Corn	"	5,811,691	231,568	6,043,259	3,391,536	304,510
Ground Barley	"	24,537,699	8,810,552	33,348,251	36,458,079	1,036,015
Mixed Grain	"	70,854,901	8,125,594	78,980,495	68,496,648	3,155,325
<u>MILLFEEDS</u>						
	Tons					
Bran	"	10,800	10,197	20,997	25,976	4,932
Shorts	"	9,309	9,653	18,962	26,129	5,087
Middlings	"	4,648	4,360	9,008	11,118	4,498
T o t a l	"	24,757	24,210	48,967	63,223	14,517
All Other Offal*	"	1,841	1,897	3,738	6,636	1,514
TOTAL OFFAL	"	26,598	26,107	52,705	69,859	16,031

* Including Coarse Grain Offal.

Winter wheat flour production for February 1949 amounted to 56,137 barrels compared with 61,847 barrels for the same month last year. Total winter wheat flour for the seven months under review to the close of February amounted to 949,718 barrels, while for the same period a year ago the amount was 464,310 barrels.

Wheat flour exports dropped to a low of 644,590 barrels for February. Total flour exported from the commencement of the crop year to the end of February amounted to 7,093,672 barrels compared with 8,571,681 barrels for the same period in 1947-48.

Millfeed production for February 1949 amounted to 48,967 tons, while for the same month last year the amount was 63,223 tons. This was comprised of bran 20,997 (25,976) tons, shorts 18,962 (26,129) tons, and middlings 9,008 (11,118) tons. Total millfeed production to the end of February of this crop year was 425,378 tons compared with 528,390 tons for the same period in 1947-48.

Total ground feeds amounting to 161,318,350 pounds for the month under review showed only a slight drop in volume from the comparative figure of 161,480,605 pounds produced in February 1948. The items in the total were as follows with the comparative figures in brackets and the quantities in pounds: Feed Wheat 7,049,760 (15,974,550); Ground Oats 35,896,585 (37,159,792); Cracked Corn 6,043,259 (3,391,536); Ground Barley 33,348,251 (36,458,079); and Mixed Grain 78,980,495 (68,496,648).

SUMMARY OF MILL GRINDINGS

The following table summarizes the mill grind of wheat, oats, corn, barley, buckwheat, rye and mixed grain for seven months of the crop year 1948-49, with comparative figures for 1947-48:

Months	Wheat for Flour	Feed Wheat	Oats	Corn	Barley	Buckwheat	Rye	Mixed Grain
- bushels -								
August, 1948	7,353,897	187,023	1,711,837	131,521	671,037	136	3,434	1,397,866
September	9,811,562	162,334	1,902,373	124,471	673,167	3,923	8,276	1,589,495
October	8,807,711	164,384	1,803,899	123,770	786,903	6,984	5,031	1,849,439
November	8,616,578	173,209	1,987,979	146,281	920,945	7,530	6,663	2,057,602
December	7,691,131	140,607	1,710,345	136,723	752,036	5,497	4,872	2,010,452
January 1949	6,523,962	141,139	1,415,700	207,454	734,815	2,318	6,766	1,796,786
February	6,499,288	117,488	1,393,473	183,400	709,478	3,323	5,425	1,749,618
T o t a l s	55,304,129	1,086,184	11,925,606	1,053,620	5,238,381	29,711	40,467	12,451,258
TOTALS LAST YEAR	67,559,111	2,153,920	15,131,298	915,946	5,686,579	26,953	5,986	11,684,220

SUMMARY OF MILL PRODUCTION

The following table summarizes the production of wheat flour, oatmeal, rolled oats, corn flour and meal and millfeeds for seven months of the crop year 1948-49, including percentage of operation and wheat flour exports with comparative figures for 1947-48:

	Wheat Flour		Oatmeal	Rolled Oats	Corn Flour and Meal	Millfeeds	Wheat Flour Exports
	Percentage of Operation	Quantity Barrels (196 lb.)	Pounds	Pounds	Pounds	Tons	Barrels (196 lb.)
August, 1948	62.8	1,619,752	292,058	13,563,560	1,090,192	57,100	943,152
September	87.5	2,174,417	430,688	15,921,873	797,964	75,395	815,658
October	76.8	1,959,206	399,620	11,790,909	1,079,832	69,131	1,446,462
November	75.8	1,936,427	426,298	12,559,610	1,027,040	67,023	1,212,229
December	67.8	1,727,899	317,164	10,495,518	927,128	56,348	1,027,688
January, 1949	60.1	1,468,422	516,682	5,729,729	579,768	49,614	1,003,893
February	62.0	1,462,175	549,586	5,674,739	582,296	48,967	644,590
T o t a l s		12,348,298	2,932,096	75,735,938	6,084,220	425,578	7,093,672
TOTALS LAST YEAR		14,908,592	2,333,522	100,724,498	6,560,916	528,390	8,571,681

The following table shows the manufacture of buckwheat flour for the calendar years 1943 to 1948:-

Months	1943	1944	1945	1946	1947	1948*
- pounds -						
January	62,744	78,544	224,860	80,504	62,192	63,594
February	32,048	230,864	8,656	-	129,716	32,971
March	23,672	34,140	7,776	50,256	23,520	26,996
April	22,708	35,224	6,528	14,700	-	55,075
May	15,920	19,680	22,072	19,600	-	16,278
June	31,684	30,092	22,576	22,540	14,112	21,756
July	12,112	12,384	16,912	8,820	42,140	4,191
August	27,648	13,968	42,268	33,124	26,852	4,340
September	98,908	20,016	8,084	34,104	10,496	128,782
October	293,456	206,216	77,710	200,232	207,822	185,448
November	337,864	249,496	312,556	417,024	244,430	186,587
December	139,572	115,520	128,224	213,916	137,416	169,628
T o t a l s	1,098,336	1,046,144	880,222	1,054,820	898,696	895,646

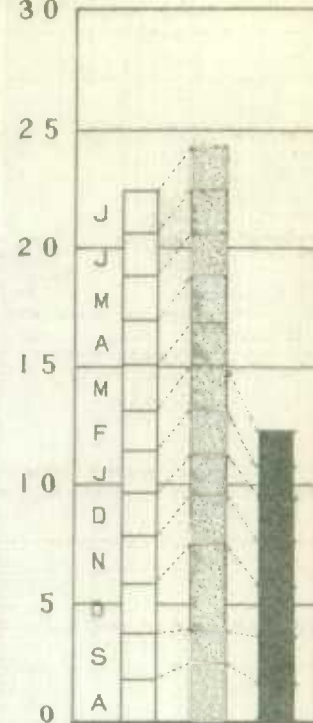
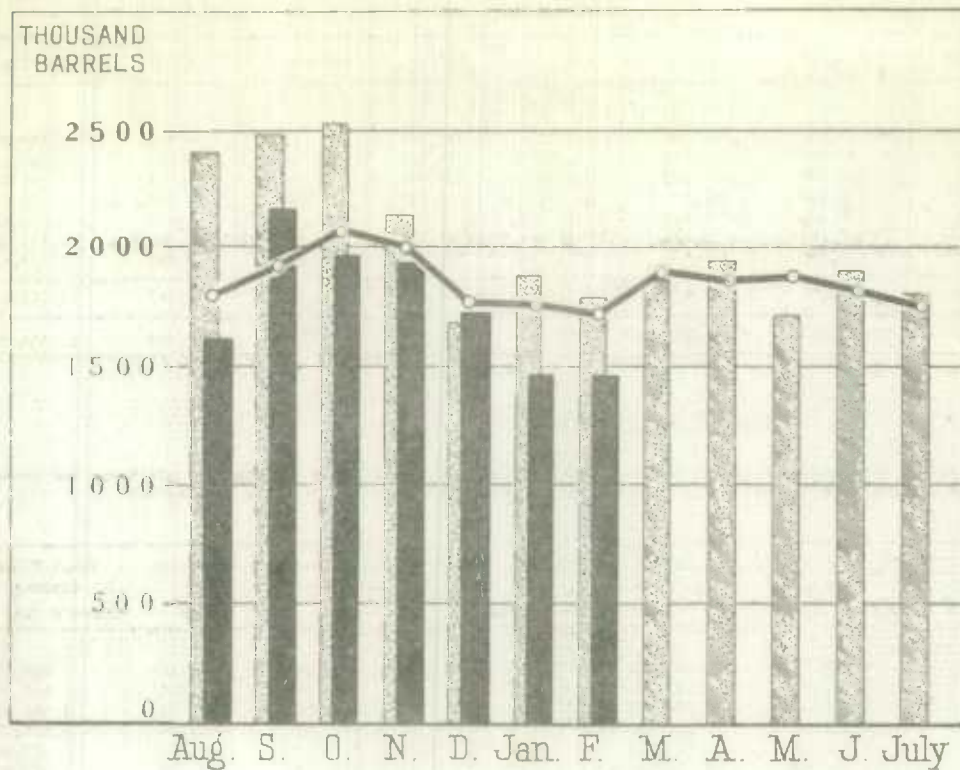
* Preliminary figures from August to December 1948.



1010633642

WHEAT FLOUR PRODUCTION

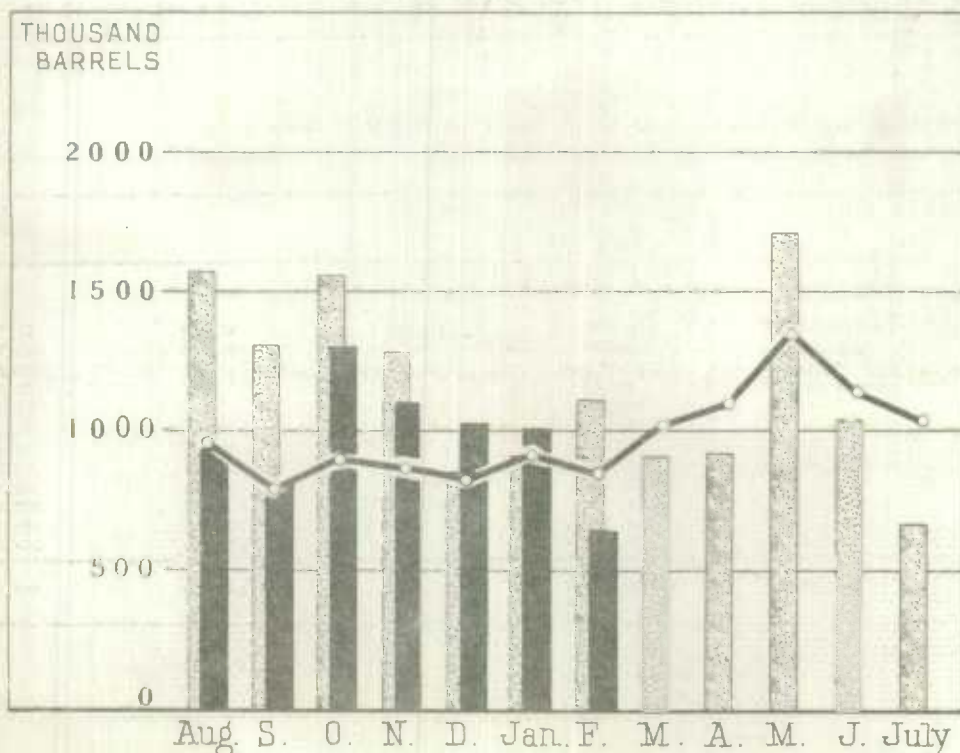
MILLION
BARRELS



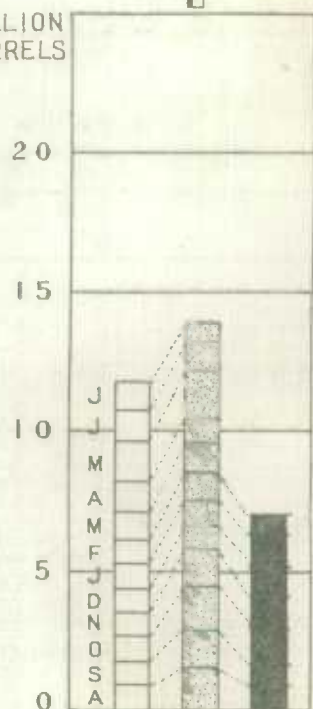
CUMULATIVE
COMPARISON



WHEAT FLOUR EXPORTS



MILLION
BARRELS



LEGEND

