

DOMINION BUREAU OF STATISTICS
AGRICULTURE DIVISION
OTTAWA, CANADA

Published by Authority of the Rt. Hon. C. D. Howe, M.P.,
Minister of Trade and Commerce

DOMINION BUREAU
OF STATISTICS

MAY 27 1949

PROPERTY OF THE
LIBRARY

Dominion Statistician: Herbert Marshall
Director, Agriculture Division: C. V. Parker
Chief, Crops Section: W. D. Porter

CANADIAN MILLING STATISTICS

APRIL 1949

Ottawa, May 26, 1949.- Wheat flour production for Canadian mills for the month of April fell below the previous month's output as well as that of the corresponding month last year. For the month under review 1,586,961 barrels were milled against 1,952,464 barrels in April last year. Total production for three-quarters of the crop year ending with April was 15,650,942 barrels while for the same period in 1947-48 the total was 18,729,893 barrels.

Mills reporting April operations had a total milling capacity of 100,106 barrels per 24-hour day and over a 25-day working period in the month 63.4 per cent of this was in effect. Mills reporting in March operated 63.9 per cent of their combined rated capacity for 27 days.

Wheat processed into flour for April amounted to 7,027,908 bushels compared with 8,910,232 bushels for the same month a year ago. Total wheat milled for flour for three-quarters of 1948-49 ending with April amounted to 69,905,623 bushels compared with 84,950,195 bushels for the same period of the previous crop year.

Stocks of wheat in mill bins at the end of April amounted to 2,025,740 bushels for flour and 120,729 bushels of feed wheat.

MILL GRINDINGS

The following table shows the amount of wheat, oats, corn, barley, buckwheat and mixed grain milled for the month of April 1949, by merchant and custom mills in Canada according to divisions, with comparative totals for the same month last year and stocks on hand at April 30, 1949. (in bushels)

Grain	Quantities Ground				Stocks on Hand April 30, 1949		
	Merchant Mills	Custom Mills	Total April 1949	Total April 1948	Merchant Mills	Custom Mills	Total April 30, 1949
EASTERN DIVISION							
Wheat -							
Manitoba Spring	2,930,908	-	2,930,908	3,540,815	1,166,041	-	1,166,041
Ontario Winter	301,392	-	301,392	249,886	424,454	-	424,454
Durum	79,864	-	79,864	172,853	26,802	-	26,802
Garnet	-	-	-	-	-	-	-
United States	-	-	-	63,560	-	-	-
All Other	36,123	158,067	196,190	273,983	105,346	135,918	241,264
Total Wheat	3,350,287	158,067	3,508,354	4,301,097	1,722,643	135,918	1,858,561
Feed Wheat	38,344	62,567	100,911	175,301	52,897	4,291	57,188
Oats	372,937	602,467	975,404	1,187,891	501,123	157,847	658,970
Corn	115,944	146,561	262,505	102,056	73,094	70,260	143,354
Barley	193,222	336,412	529,634	666,264	64,122	121,945	186,067
Buckwheat	-	304	304	1,446	15,232	5,023	20,255
Mixed Grain	98,883	1,305,764	1,404,647	1,301,759	850	48,052	48,902
WESTERN DIVISION							
Wheat -							
Manitoba Spring	3,366,433	-	3,366,433	4,111,631	129,652	-	129,652
Ontario Winter	-	-	-	-	-	-	-
Durum	21,442	-	21,442	64,607	5,134	-	5,134
Garnet	-	-	-	-	-	-	-
United States	-	-	-	-	-	-	-
All Other	33,056	78,623	131,679	432,897	-	32,393	32,393
Total Wheat	3,440,931	78,623	3,519,554	4,609,135	134,786	32,393	167,179
Feed Wheat	27,117	9,332	36,449	77,869	63,541	-	63,541
Oats	522,096	122,456	644,552	582,658	320,850	12,526	333,376
Corn	7,635	3,868	11,503	1,182	30,204	589	30,793
Barley	98,744	82,515	181,259	176,218	107,608	10,807	118,415
Buckwheat	-	-	-	-	2,036	-	2,036
Mixed Grain	95,707	101,967	197,674	194,705	21,956	263	22,219
DOMINION OF CANADA							
Wheat -							
Manitoba Spring	6,297,341	-	6,297,341	7,652,446	1,295,693	-	1,295,693
Ontario Winter	301,392	-	301,392	249,886	424,454	-	424,454
Durum	101,306	-	101,306	237,460	31,936	-	31,936
Garnet	-	-	-	-	-	-	-
United States	-	-	-	63,560	-	-	-
All Other	91,179	236,690	327,869	706,880	105,346	168,311	273,657
Total Wheat	6,791,218	236,690	7,027,908	8,910,232	1,857,429	168,311	2,025,740
Feed Wheat	65,461	71,899	137,360	253,170	116,438	4,291	120,729
Oats	895,033	724,923	1,619,956	1,770,549	821,973	170,373	992,346
Corn	123,579	150,429	274,008	103,238	103,298	70,249	174,147
Barley	291,966	418,927	710,893	864,482	171,730	132,752	304,482
Buckwheat	-	304	304	1,446	17,268	5,023	22,291
Mixed Grain	193,990	1,407,731	1,601,721	1,496,464	22,806	48,315	71,121

Price: 50 cents a year.

The following table shows the production from wheat and coarse grains ground in merchant and custom mills in Canada for the month of April 1949, according to divisions, with comparative totals for the same month last year and stocks on hand at April 30, 1949.

Products	Unit of Measure	Production from Grindings				Stocks on Hand April 30, 1949
		Eastern Division	Western Division	Total April 1949	Total April 1948	
	<u>Barrels (196 lb.)</u>					
<u>WHEAT FLOUR</u>						
Spring No. 1 or Top Patent, including Semolina	"	87,519	205,917	293,436	336,876	134,962
Spring No. 2 Patent	"	157,113	200,219	357,332	343,053	130,150
Spring No. 3 Patent (Strong Bakers or Export Patent)	"	389,051	301,026	690,077	931,515	185,514
Whole Wheat and Graham Flour ..	"	5,888	14,357	20,245	17,704	10,431
Ontario Winter Wheat Flour	"	72,100	-	72,100	70,338	25,332
Durum Semolina and Flour	"	18,288	3,812	22,100	49,286	7,838
Lower Grades of Flour	"	19,187	21,913	41,100	53,491	49,017
All Other	"	43,655	46,916	90,571	150,201	158,848
TOTAL FLOUR	"	792,801	794,160	1,586,961	1,952,464	702,092
<u>SUNDRY CEREALS</u>						
	<u>Pounds</u>					
Oatmeal	"	518,224	172,212	690,436	316,360	343,512
Rolled Oats	"	2,359,460	4,218,136	6,577,596	11,230,151	7,112,862
Corn Flour and Meal	"	1,249,544	-	1,249,544	480,300	972,538
Barley, Pot and Pearl	"	149,852	189,042	338,894	2,557,203	337,225
Buckwheat Flour	"	8,388	-	8,388	58,075	73,127
<u>GROUND FEED</u>						
	<u>Pounds</u>					
Feed Wheat	"	6,054,610	2,168,160	8,222,770	15,169,441	221,850
Ground Oats	"	28,190,137	13,816,773	42,006,910	40,152,907	1,190,285
Cracked Corn	"	8,572,943	644,176	9,217,119	2,812,177	340,310
Ground Barley	"	25,070,509	8,369,600	33,440,109	36,806,416	647,753
Mixed Grain	"	62,708,064	8,799,620	71,507,684	66,558,921	3,610,220
<u>MILLFEEDS</u>						
	<u>Tons</u>					
Bran	"	11,937	13,555	25,492	28,758	2,730
Shorts	"	9,119	9,201	18,320	26,459	3,027
Middlings	"	5,084	4,827	9,911	16,006	2,577
T o t a l	"	26,140	27,583	53,723	71,223	8,334
All Other Offal*	"	2,903	1,629	4,532	5,569	1,561
TOTAL OFFAL	"	29,043	29,212	58,255	76,792	9,895

* Including Coarse Grain Offal.

The production of winter wheat flour for April 1949 was 72,100 barrels, while for the same month last year the amount was 70,338 barrels. Total winter wheat flour manufactured for nine months of the present crop year amounted to 1,088,836 barrels against 605,871 barrels in the three-quarter period of 1947-48.

Exports of wheat flour for April amounted to 871,271 barrels compared with 1,285,050 barrels for the corresponding month last year. This brought the total exported for three-quarters of the current crop year to 8,323,235 barrels against 10,763,920 barrels for a similar period in 1947-48.

Millfeed production for April, in line with the lower trend in flour, amounted to 53,723 tons compared with 71,223 tons for April last year. This was comprised of bran 25,492 (28,758) tons, shorts 18,320 (26,459) tons, and middlings 9,911 (16,006) tons. Total millfeeds manufactured for the three-quarter period of this crop year amounted to 535,730 tons, while for a like period in 1947-48 the amount was 666,398 tons.

Total ground feeds for April amounted to 164,394,592 pounds against 161,499,862 pounds for the same month in 1948. The items covered by these totals were as follows with the quantities in pounds and the comparative figures in brackets: Feed Wheat 8,222,770 (15,169,441); Ground Oats 42,006,910 (40,152,907); Cracked Corn 9,217,119 (2,812,177); Ground Barley 33,440,109 (36,806,416); and Mixed Grain 71,507,684 (66,558,921).

SUMMARY OF MILL GRINDINGS

The following table summarizes the mill grind of wheat, oats, corn, barley, buckwheat, rye and mixed grain for nine months of the crop year 1948-49, with comparative figures for 1947-48:

Months	Wheat for Flour	Feed Wheat	Oats	Corn	Barley	Buckwheat	Rye	Mixed Grain
- bushels -								
August, 1948	7,353,897	187,023	1,711,837	131,521	671,037	136	3,434	1,397,866
September	9,811,562	162,334	1,902,373	124,471	673,167	3,923	8,276	1,589,495
October	8,807,711	164,384	1,803,899	123,770	786,903	6,984	5,031	1,849,439
November	6,616,578	173,209	1,987,979	146,281	920,945	7,530	6,663	2,057,602
December	7,691,131	140,607	1,710,345	136,723	752,036	5,497	4,872	2,010,452
January, 1949	6,523,962	141,139	1,415,700	207,454	784,815	2,318	6,766	1,796,786
February	6,499,288	117,488	1,393,473	183,400	709,478	3,323	5,425	1,749,618
March	7,573,586	156,408	1,578,173	226,077	682,890	2,360	7,627	1,745,547
April	7,027,908	137,360	1,619,956	274,008	710,893	304	4,513	1,601,721
Totals	69,905,623	1,379,952	15,123,735	1,553,705	6,692,164	32,375	52,607	15,798,526
TOTALS LAST YEAR	64,950,195	2,694,293	18,697,388	1,111,943	7,331,911	39,281	7,011	14,783,213

SUMMARY OF MILL PRODUCTION

The following table summarizes the production of wheat flour, oatmeal, rolled oats, corn flour and meal and millfeeds for nine months of the crop year 1948-49, including percentage of operation and wheat flour exports with comparative figures for 1947-48:

Months	Wheat Flour		Oatmeal	Rollled Oats	Corn Flour and Meal	Millfeeds	Wheat Flour Exports
	Percentage of Operation	Quantity Barrels (196 lb.)	Pounds	Pounds	Pounds	Tons	Barrels (196 lb.)
August, 1948	62.8	1,619,752	292,058	13,563,560	1,090,192	57,100	943,158
September	87.5	2,174,417	430,688	15,921,873	797,964	75,395	815,658
October	76.8	1,959,206	399,620	11,790,909	1,079,832	69,131	1,446,462
November	75.8	1,936,427	426,298	12,559,610	1,027,040	67,023	1,212,229
December	67.8	1,727,899	317,164	10,495,518	927,128	58,348	845,172
January, 1949	60.1	1,468,422	516,682	5,729,729	579,768	49,614	854,741
February	62.0	1,462,175	549,586	5,674,739	582,296	48,967	644,590
March	63.9	1,715,683	792,442	8,390,602	1,134,248	56,429	709,960
April	63.4	1,586,961	690,436	6,577,596	1,249,544	53,723	871,271
Totals		15,650,942	4,414,974	90,704,136	8,488,012	535,730	8,323,235
TOTALS LAST YEAR		18,729,893	3,003,126	121,707,937	8,519,704	666,398	10,763,920

The following table shows the manufacture of barley, pot and pearl, and meal for the calendar years 1943 to 1948:-

Months	1943	1944	1945	1946	1947	1948*
- pounds -						
January	303,395	613,103	589,764	1,287,539	525,730	539,591
February	536,938	185,434	262,787	951,917	534,831	1,029,620
March	828,436	284,788	350,139	914,846	750,075	1,546,897
April	304,682	341,917	316,206	545,983	507,337	2,557,203
May	198,793	330,260	336,942	297,095	313,396	2,986,390
June	329,967	365,932	416,445	380,997	242,013	3,120,648
July	190,463	171,794	278,810	535,766	227,848	1,947,080
August	324,874	399,448	580,062	743,281	651,259	741,161
September	471,681	615,857	720,643	682,074	563,936	570,865
October	775,826	469,420	1,125,530	1,023,537	1,017,948	830,874
November	1,967,440	702,464	980,205	1,040,809	657,783	775,265
December	662,049	429,167	1,016,425	829,372	723,568	547,428
Totals	6,894,544	4,909,584	6,973,958	9,233,216	6,715,726	17,192,422

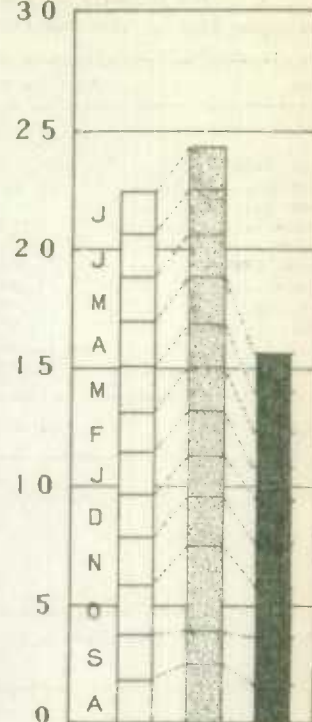
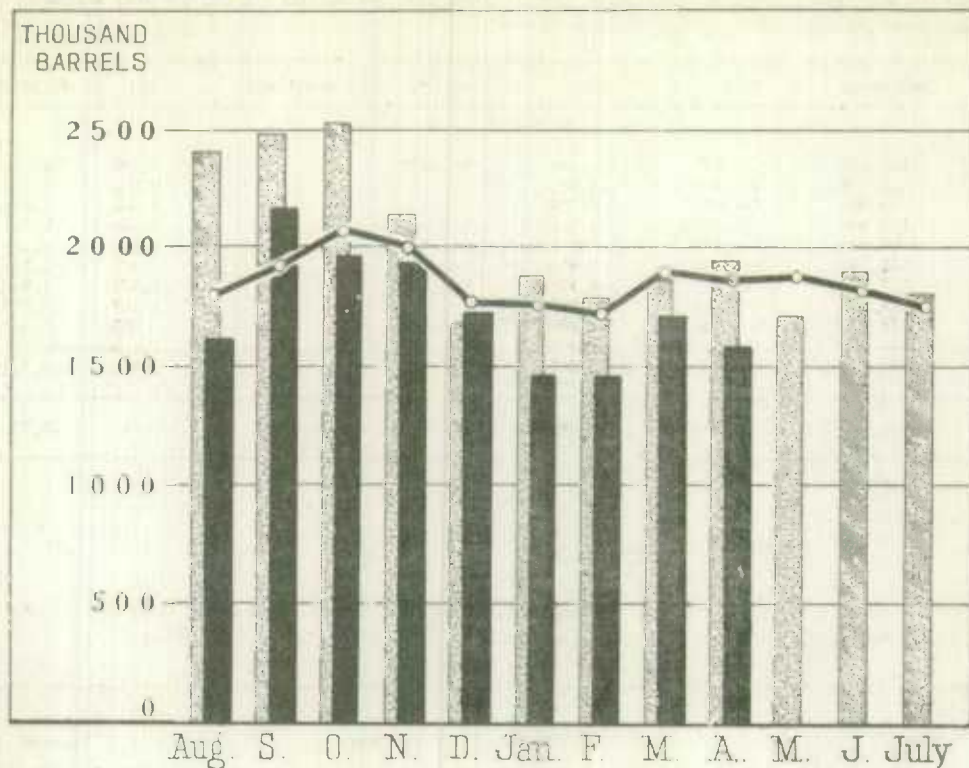
* Preliminary figures from August to December 1948.



1010633644

WHEAT FLOUR PRODUCTION

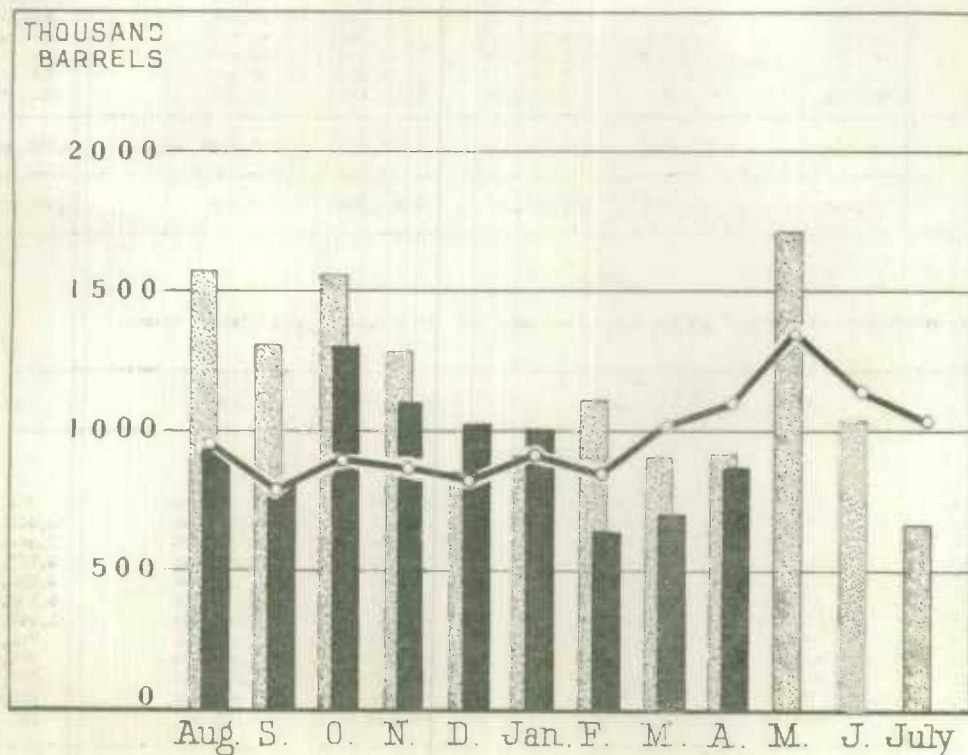
MILLION
BARRELS
30



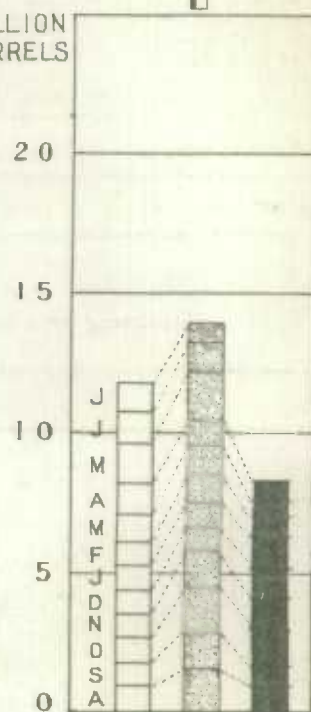
CUMULATIVE
COMPARISON



WHEAT FLOUR EXPORTS



MILLION
BARRELS



LEGEND

