

DOMINION BUREAU OF STATISTICS - CANADA  
AGRICULTURAL BRANCH

(ISSUED OCTOBER 11, 1938 AT 4 p.m.)

DOMINION BUREAU  
OF STATISTICS

Dominion Statistician: R. H. Coats, LL.D., F.R.S.C., F.S.S. (Hon.)  
In Charge Cold Storage Statistics: J. K. Finlayson, B.S.A.

STOCKS OF CANADIAN FRUIT, AND VEGETABLES, OCTOBER 1, 1938.

Canadian apples held in Cold and Common Storage at distributing points are compiled by provinces and by principal cities. At October 1, 1938 in Canada there were 62,098 barrels, 1,445,522 boxes and 154,539 bushels in other containers. Converting all containers to bushels the combined figures are 1,786,355 bushels, compared with 20,997 bushels at September 1, 1938, which is an increase of 1,765 thousand bushels.

Canadian pears reached a total of 116,402 bushels compared with 37,033 at September 1, 1938, an increase of 79,369 bushels.

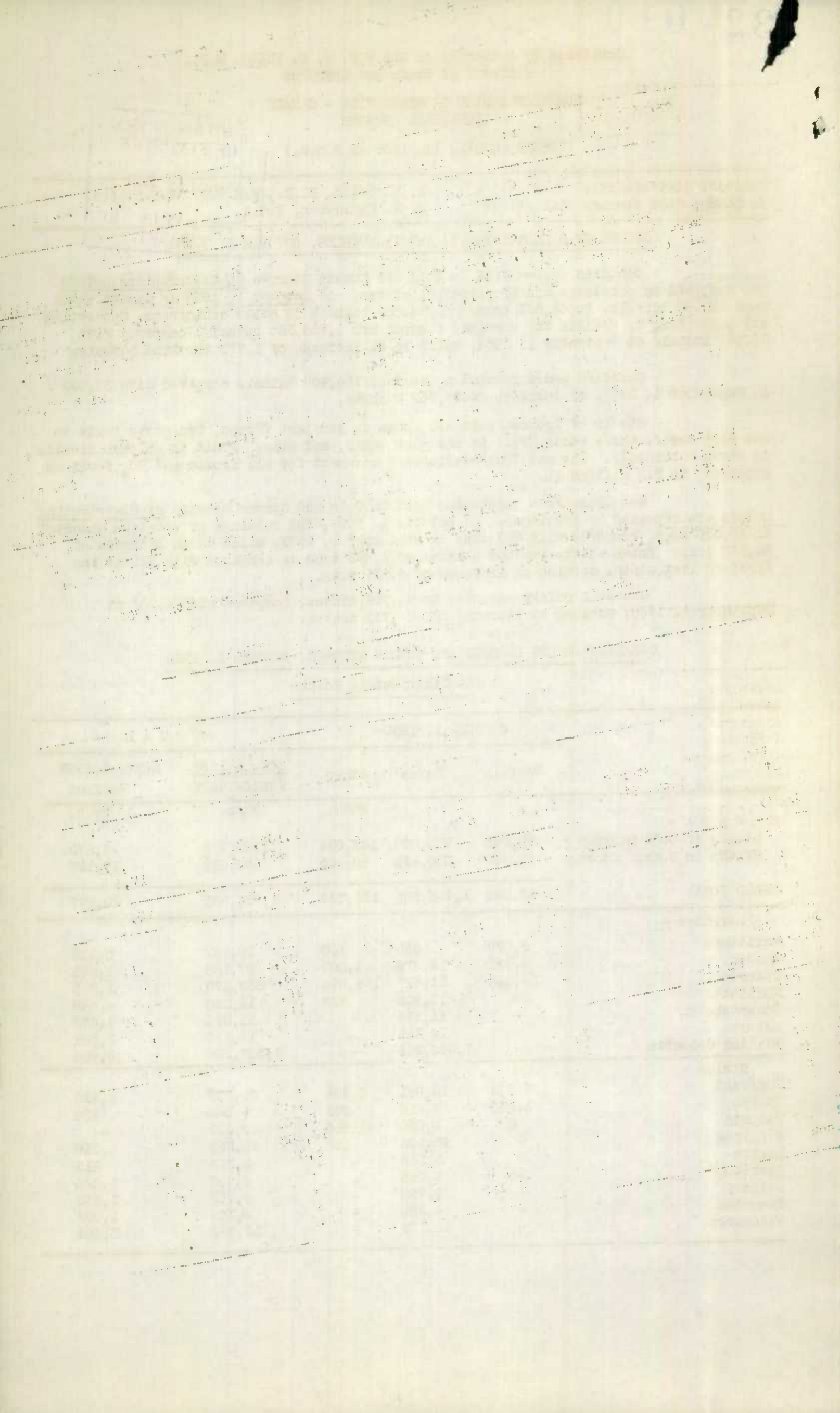
Stocks of frozen fruit are shown as straight frozen, two parts fruit to one part sugar, three parts fruit to one part sugar, and pulp. Fruit in sulphur dioxide is shown separately. The net "Out-of-Storage" movement for all frozen and SO<sub>2</sub> fruit as reported, is 3.8 million lb.

Canadian-grown vegetables held in Cold and Common Storage at distributing points are reported by provinces. At October 1, 1938, the holdings of potatoes amounted to 25,339 tons, compared with 787 tons at September 1, 1938, which is an increase of 24,552 tons. Onion stocks reached a total of 4,898 tons as compared with 347 at the first of last month, showing an increase of 4,551 tons.

Canadian celery amounted to 94,459 crates, compared with 4,707 at September 1, 1938, showing an increase of 89,752 crates.

CANADIAN APPLES IN COLD AND COMMON STORAGE, OCTOBER 1, 1938At Distributing Points

	OCTOBER 1, 1938			T O T A L	
	Barrels	Boxes	Other bush.	OCT. 1, 1938 PRELIMINARY bush.	Sept. 1, 1938 Revised bush.
C A N A D A -					
Stocks in Cold Storage	32,291	915,029	144,034	1,155,936	3,870
Stocks in Common Storage	29,807	530,493	10,505	630,419	17,127
GRAND TOTAL	62,098	1,445,522	154,539	1,786,355	20,997
Provinces -					
Maritimes	3,079	830	100	10,167	5,112
Quebec	4,925	18,376	4,007	37,158	1,321
Ontario	54,094	21,619	149,974	333,875	1,983
Manitoba	-	15,905	458	16,363	4,648
Saskatchewan	-	11,294	-	11,294	1,478
Alberta	-	14,112	-	14,112	2,551
British Columbia	-	1,363,386	-	1,363,386	3,904
Cities -					
Montreal	3,642	16,681	3,166	30,773	1,215
Quebec	1,283	1,695	841	6,385	106
Toronto	671	1,050	21,986	25,049	-
Winnipeg	-	15,905	458	16,363	4,648
Regina	-	3,363	-	3,363	215
Saskatoon	-	3,995	-	3,995	1,028
Calgary	-	9,753	-	9,753	1,548
Edmonton	-	4,359	-	4,359	1,003
Vancouver	-	12,123	-	12,123	3,404





## CANADIAN FRUIT IN COLD AND COMMON STORAGE, OCTOBER 1, 1938

	OCT. 1, 1938 PRELIMINARY	Sept. 1, 1938 Revised	OCT. 1, 1938 PRELIMINARY	Sept. 1, 1938 Revised	OCT. 1, 1938 PRELIMINARY	Sept. 1, 1938 Revised
	lb.	lb.	lb.	lb.	lb.	lb.
	RASPBERRIES		STRAWBERRIES		OTHER FRUIT	
F R O Z E N						
Straight	954,274	1,408,432	523,435	1,107,169	1,974,371	2,943,078
2 + 1	330,591	322,888	2,193,698	2,159,376	300,469	366,771
3 + 1	(x)	-	659,108	683,010	164,420	26,300
Pulp	(x)	(x)	134,145	142,245	432,077	435,884
T O T A L	1,284,865	1,731,320	3,510,386	4,091,800	2,871,337	3,772,033
	STRAWBERRIES		CHERRIES		OTHER FRUIT	
In SO <sub>2</sub>	818,996	1,746,765	1,122,386	1,737,255	1,841,772	2,143,940

## CANADIAN PEARS IN COLD AND COMMON STORAGE, OCTOBER 1, 1938

## At Distributing Centres

	OCTOBER 1, 1938		T O T A L	
	Cold Storage	Common Storage	OCTOBER 1, 1938 PRELIMINARY	September 1, 1938 Revised
	bush.	bush.	bush.	bush.
C A N A D A	111,774	4,628	116,402	37,033
Maritimes	237	100	337	1,843
Quebec	2,681	1,317	3,998	-
Ontario	18,221	1,111	19,332	18,903
Manitoba	2,387	211	2,598	2,314
Saskatchewan	1,235	"	1,235	2,833
Alberta	2,093	580	2,673	4,952
British Columbia	84,920	1,309	86,229	6,188

## CANADIAN VEGETABLES IN COLD AND COMMON STORAGE, OCTOBER 1, 1938.

## At Distributing Centres

	POTATOES		ONIONS		CELERY	
	OCT. 1, 1938 PRELIMINARY	Sept. 1, 1938 Revised	OCT. 1, 1938 PRELIMINARY	Sept. 1, 1938 Revised	OCT. 1, 1938 PRELIMINARY	Sept. 1, 1938 Revised
	tons	tons	tons	tons	crates	crates
C A N A D A	25,339	787	4,898	347	94,459	4,707
Maritimes	140	129	75	50	88	50
Quebec	12,647	150	575	44	8,916	357
Ontario	11,782	139	1,439	112	74,078	1,633
Manitoba	137	35	200	24	8,543	2,417
Saskatchewan	91	41	144	15	555	202
Alberta	14	42	191	23	1,709	48
Br. Columbia	528	251	2,274	79	570	-

(x) Less than three reports received, but included in "Other Fruit".



1010672917