

32 013



CANADA
DEPARTMENT OF TRADE AND COMMERCE
DOMINION BUREAU OF STATISTICS
AGRICULTURAL BRANCH

Vol. 10

No. 11

CANADIAN SUGAR STATISTICS

for the four weeks period ended

NOVEMBER 1, 1930

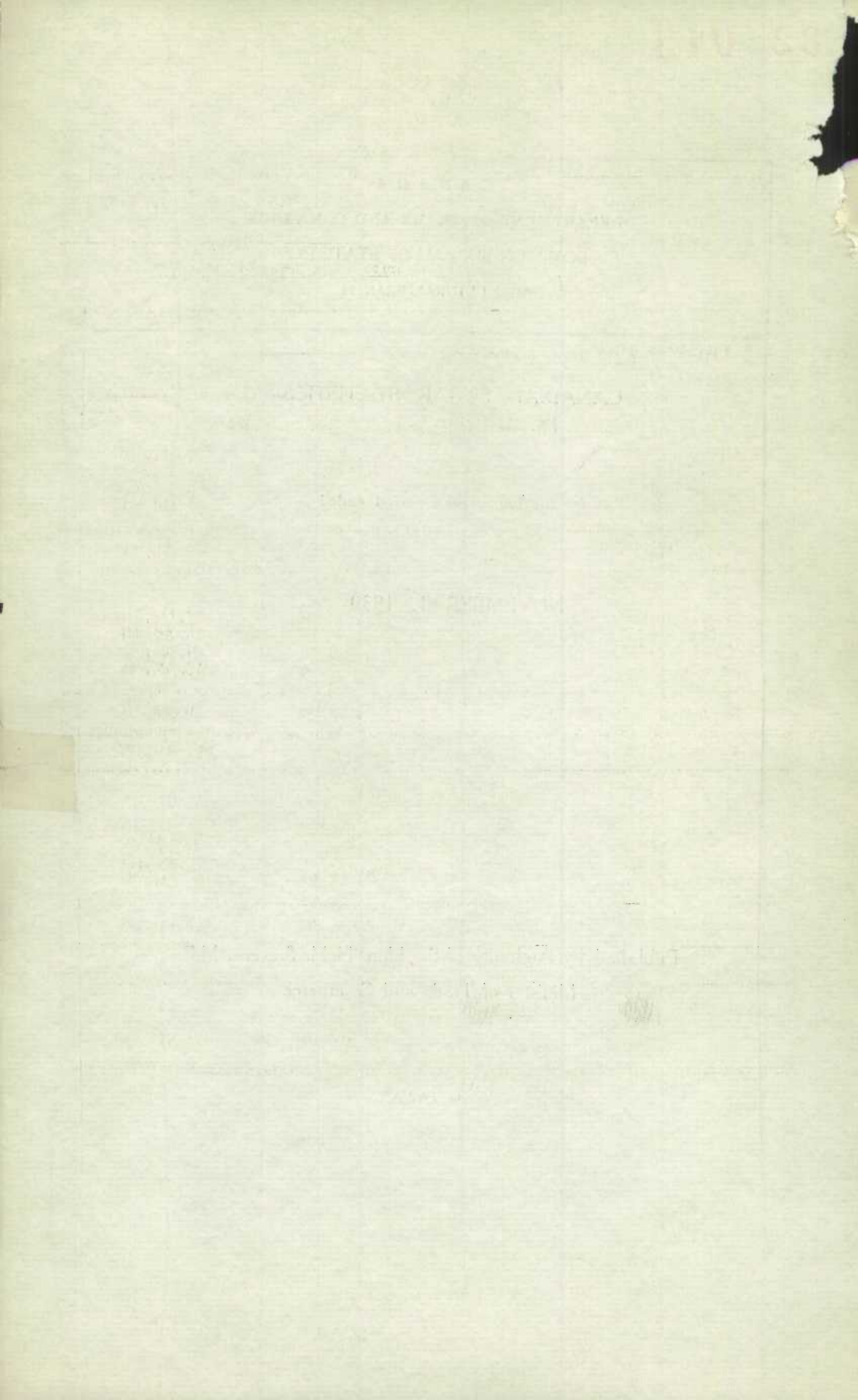


Published by Authority of the Hon. H. H. Stevens, M.P.,
Minister of Trade and Commerce



OTTAWA

1930



DEPARTMENT OF TRADE AND COMMERCE
DOMINION BUREAU OF STATISTICS
AGRICULTURAL BRANCH
OTTAWA.

(Issued November 27, 1930)

Dominion Statistician: R. H. Coats, B.A.; F.S.S. (Hon.); F.R.S.C.
Chief, Agricultural Branch: T. W. Grindley, Ph.D.

Sugar Report for Four Week's Period Ended November 1st. 1930

RAW SUGAR

Week ended	1930	1929
<u>Stock on Hand at Beginning of Period - Pounds</u>		
October 11th.	53,544,470	39,310,670
" 18th.	46,749,656	45,260,053
" 25th.	43,176,124	42,789,600
November 1st.	64,197,200	51,810,151
January 1st.	82,707,260	39,785,728
<u>Receipts - Pounds</u>		
October 11th.	5,593,510	27,732,611
" 18th.	9,335,960	19,220,331
" 25th.	39,958,306	29,220,678
November 1st.	20,893,646	15,524,875
Total Four Weeks Period	75,781,422	91,698,495
January 1st. to November 1st.	742,854,566	791,404,228
<u>Meltings and Shipments - Pounds</u>		
October 11th.	12,388,324	21,783,228
" 18th.	12,909,492	21,690,784
" 25th.	18,937,230	20,200,127
November 1st.	24,311,765	20,732,174
Total Four Weeks Period	68,546,811	84,406,313
January 1st. to November 1st.	764,782,745	784,587,104
<u>Stock on Hand at End of Period - Pounds</u>		
	60,779,081	46,602,852.

THE UNIVERSITY OF CHICAGO
DEPARTMENT OF CHEMISTRY
5800 S. UNIVERSITY AVENUE
CHICAGO, ILL. 60637

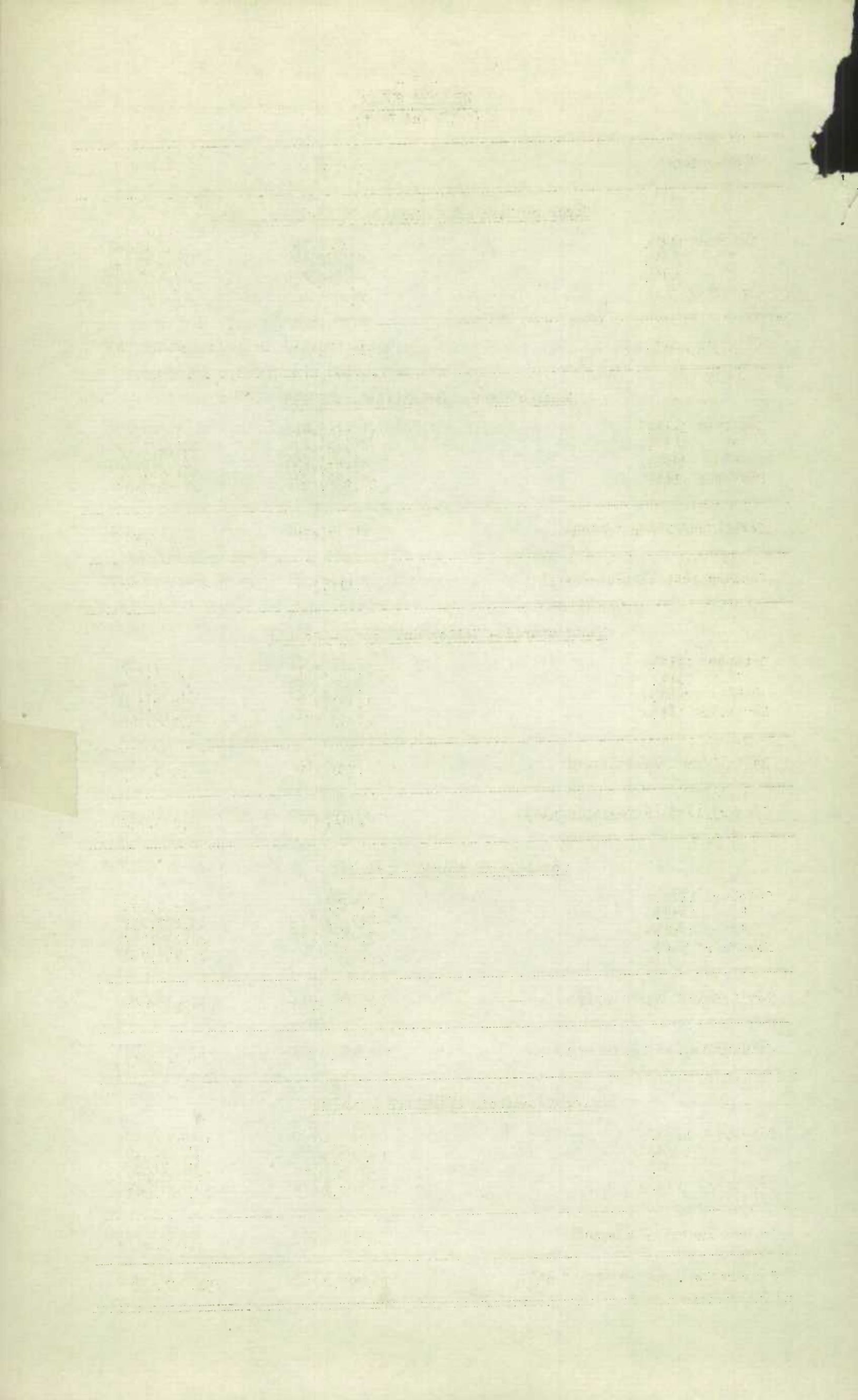
1. The first part of the report describes the experimental
method used for the determination of the rate constants
of the reaction between the radical and the substrate.
The reaction was studied in a flow system at various
temperatures and concentrations of the reactants.
The rate constants were determined from the initial
rates of the reaction and compared with the values
obtained from the integrated rate law. The results
showed that the rate constants are independent of
the concentration of the substrate and increase
with increasing temperature. The activation energy
of the reaction was calculated from the Arrhenius
plot and found to be 12.5 kJ/mol.

2. The second part of the report describes the
study of the effect of the solvent on the rate
constants of the reaction.

The reaction was studied in various solvents
including water, methanol, and acetonitrile.
The rate constants were found to be higher in
acetonitrile than in water and methanol.
This is due to the higher dielectric constant
of acetonitrile, which stabilizes the radical
intermediate.

- 2 -
REFINED SUGAR
(Cane and Beet)

Week ended	1930	1929
<u>Stock on Hand at Beginning of Period - Pounds</u>		
October 11th.	89,320,905	69,840,007
" 18th.	85,482,942	70,860,031
" 25th.	88,960,730	77,476,631
November 1st.	96,024,654	87,994,080
January 1st.	131,833,217	102,862,903
<u>Manufactured - Granulated - Pounds</u>		
October 11th.	15,713,017	18,749,429
" 18th.	21,444,274	22,671,290
" 25th.	25,833,950	27,341,680
November 1st.	28,965,826	27,412,925
Total Four Weeks Period	91,957,067	96,175,324
January 1st. to November 1st.	638,518,324	697,472,077
<u>Manufactured - Yellow and Brown - Pounds</u>		
October 11th.	2,828,381	2,671,216
" 18th.	1,348,829	2,448,841
" 25th.	1,640,563	1,757,307
November 1st.	1,913,078	2,106,819
Total Four Weeks Period	7,730,851	8,984,133
January 1st. to November 1st.	79,741,497	78,045,952
<u>Total Manufactured - Pounds</u>		
October 11th.	18,541,398	21,420,645
" 18th.	22,793,103	25,120,131
" 25th.	27,474,513	29,098,987
November 1st.	30,878,904	29,519,744
Total Four Weeks Period	99,687,918	105,159,507
January 1st. to November 1st.	768,259,821	775,518,029
<u>Total Domestic Shipments - Pounds</u>		
October 11th.	22,049,430	18,795,639
" 18th.	18,624,354	17,952,878
" 25th.	19,685,067	16,660,179
November 1st.	24,027,172	15,476,953
Total Four Weeks Period	84,386,003	68,885,649
January 1st. to November 1st.	776,793,257	751,927,990



Week ended	1930	1929
<u>Total Export Shipments - Pounds</u>		
October 11th.	329,931	1,504,982
" 18th.	690,981	650,653
" 25th.	725,522	1,921,359
November 1st.	754,318	706,706
Total Four Weeks Period	2,500,752	4,783,700
January 1st. to November 1st.	21,227,713	25,122,777
<u>Shipments - Granulated - Pounds</u>		
October 11th.	20,089,022	18,208,042
" 18th.	16,415,464	16,497,979
" 25th.	18,456,089	16,747,998
November 1st.	22,241,442	14,493,631
Total Four Weeks Period	77,202,017	65,947,650
January 1st. to November 1st.	717,985,711	699,792,533
<u>Shipments - Yellow and Brown - Pounds</u>		
October 11th.	2,290,339	2,092,579
" 18th.	2,899,851	2,105,552
" 25th.	1,954,500	1,833,540
November 1st.	2,540,048	1,690,028
Total Four Weeks Period	9,684,738	7,721,699
January 1st. to November 1st.	80,035,259	77,258,234
<u>Total Shipments - Pounds</u>		
October 11th.	22,379,361	20,300,621
" 18th.	19,315,315	18,603,531
" 25th.	20,410,589	18,581,538
November 1st.	24,781,490	16,183,659
Total Four Weeks Period	86,886,755	73,669,349
January 1st. to November 1st.	798,020,970	777,050,767
<u>Stock on Hand at End of Period - Pounds</u>		
	102,122,068	101,330,165

1917

1918

1919

1920

1921

1922

1923 - 1924

1923

1924

1925

1926

1927

1928

1929

1930

1931

1932 - 1933

1932

1933

1934

1935

1936

1937

1938

1939

1940

1941 - 1942

1941

1942

1943

1944

1945

1946

1947

1948

1949

1950 - 1951

1950

1951

IMPORTS OF RAW AND REFINED SUGAR, OCTOBER, 1930
(Compiled by External Trade Branch)

RAW SUGAR

Countries Whence Imported	Quantity i .	Value \$
British Guiana	10,522,600	218,619
British South Africa	14,913,000	335,673
British West Indies		
Barbados	4,677,000	106,915
Jamaica	3,092,100	63,481
Trinidad	868,100	20,323
Other British West Indies	13,707,800	382,286
Cuba	11,102,000	115,104
Fiji	4,640,000	146,720
San Domingo	4,256,000	42,145
Total October, 1930	67,778,600	1,431,266
Total October, 1929	92,403,300	2,140,222
Ten Months ended October, 1930	707,347,200	16,975,595
Ten Months ended October, 1929	710,225,900	17,961,735

REFINED SUGAR

United States	148,700	5,833
Belgium	194,100	5,706
Cuba	980,000	24,557
Hong Kong	100	4
Total October, 1930	1,322,900	36,150
Total October, 1929	8,125,300	245,960
Ten Months ended October, 1930	48,762,300	1,348,687
Ten Months ended October, 1929	35,926,700	1,080,208

Handwritten text at the top of the page, possibly a date or header.



Faint, illegible handwritten text in the middle section of the page.

Faint, illegible handwritten text at the bottom of the page.

EXPORTS OF CANADIAN REFINED SUGAR

Countries of destination of Canadian Refined Sugar
exported during October, 1930.

(Compiled by the External Trade Branch)

Countries of Destination	October, 1930.	
	Quantity Lb.	Value \$
Bermuda	1,700	93
British Guiana	12,800	668
British Honduras	194,100	9,263
British West Indies		
Barbados	3,800	239
Jamaica	59,900	3,054
Trinidad	5,700	344
Other British West Indies	195,000	9,807
Japan	200	10
Newfoundland	1,325,800	66,732
St. Pierre & Miquelon	38,100	1,939
Total October, 1930	1,837,100	92,149
Total October, 1929	4,970,000	260,001
Ten Months ended October, 1930	18,036,900	836,513
Ten Months ended October, 1929	21,199,600	1,033,031

STATISTICS CANADA LIBRARY
BIBLIOTHÈQUE STATISTIQUE CANADA



1010682558