

MAY 1 1947

32-013

c. 2

Published by Authority of the Hon. James A. MacKinnon, M.P.,  
Minister of Trade and Commerce

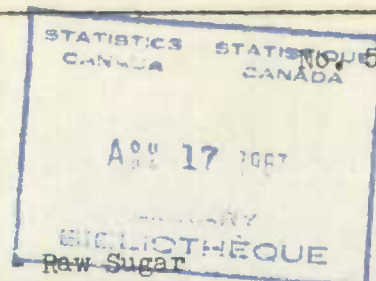
DOMINION BUREAU OF STATISTICS  
AGRICULTURAL DIVISION

Price: \$1.00 per year

(Issued May 30, 1947)

Dominion Statistician: Herbert Marshall.  
Director, Agricultural Division: J. B. Rutherford.  
Statistician: R. E. Johnson.

Vol. 27

SUGAR REPORT APRIL 26 TO MAY 17, 1947Stocks, Receipts, Meltings, Manufactures and SalesP O U N D S

Week ending	1 9 4 7	1 9 4 6
-------------	---------	---------

Stock on Hand at Beginning of Period

April 26	81,312,446	85,988,723
May 3	80,693,348	100,598,844
May 10	78,784,938	120,646,125
May 17	78,957,343	123,474,855
January 1	111,413,636	90,333,091

Receipts

April 26	18,099,595	20,201,564
May 3	18,159,225	33,623,924
May 10	16,926,634	30,629,592
May 17	25,636,714	
Total Four Weeks	78,822,168	84,455,080
January 1 to May 17		278,331,393

Meltings and Sales

April 26	18,718,693	19,168,086
May 3	20,067,635	
May 10	16,754,229	15,665,303
May 17	20,532,759	15,939,969
Total Four Weeks	76,073,316	50,773,358
January 1 to May 17		248,994,039

Adjustments for Period

-

-

Adjustments since January 1

- 541

-

Stock on Hand at End of Period

84,061,298

119,670,445





REFINED SUGAR

P O U N D S

	1947 Beet & Cane	1946 Beet & Cane
Stock on hand at beginning of Period	162,969,267	173,273,570
Stock on hand at January 1	204,108,252	183,232,368
Manufactured during Period	70,422,698	46,891,134
Manufactured since January 1	266,702,413	257,477,139
Total Sales + Exports during Period	70,234,681	67,291,616
Total Sales + Exports since January 1	307,383,305	287,852,954
Adjustments during Period	- 15,554	- 25,619
Adjustments since January 1	-285,630	- 9,084
Stock on hand at end of Period	163,141,730	152,847,469

Item	Date	1 9 4 7		1 9 4 6	
		Beet	Cane	Beet	Cane
Stock on hand at beginning of Period	April 26	98,060,195	64,909,072	75,686,425	97,587,145
	May 3	92,989,243	70,025,221	72,846,360	89,982,055
	May 10	88,250,198	74,453,014	69,453,230	90,308,310
	May 17	85,369,201	78,499,787	66,741,795	89,862,744
January 1		132,748,385	71,359,867	111,527,325	71,705,043
Manufactured Granulated -	April 26	-	14,487,918	-	3,809,352
	May 3	-	15,939,676	-	11,289,764
	May 10	-	14,441,639	-	12,993,618
	May 17	-	16,093,981	-	13,262,317
Total Four Weeks		-	60,963,214	-	41,355,051
January 1 to May 17		28,469,000	204,308,776	19,408,770	209,074,135
Manufactured Yellow and Brown	April 26	-	2,132,300	-	725,726
	May 3	-	2,687,334	-	1,340,653
	May 10	-	2,306,450	-	1,631,833
	May 17	-	2,333,400	-	1,837,871
Total Four Weeks		-	9,459,484	-	5,536,083
January 1 to May 17			33,924,637	-	28,994,234
Total Manufactured -	April 26	-	16,620,218	-	4,535,078
	May 3	-	18,627,010	-	12,630,417
	May 10	-	16,748,089	-	14,625,451
	May 17	-	18,427,381	-	15,100,188
Total Four Weeks		-	70,422,698	-	46,891,134
January 1 to May 17		28,469,000	238,233,413	19,408,770	238,068,369
Total Sales Domestic -	April 26	5,070,952	11,478,744	2,837,465	11,926,693
	May 3	4,725,745	14,186,363	3,393,130	12,314,383
	May 10	2,880,997	12,698,741	2,711,435	15,059,517
	May 17	3,640,142	15,505,972	3,052,285	15,803,173
Total Four Weeks		16,317,836	53,869,820	11,994,315	55,103,766
January 1 to May 17		79,445,726	227,288,405	67,244,185	219,408,807
Sales Granulated Domestic + Exports	April 26	5,070,952	9,602,019	2,837,465	10,558,313
	May 3	4,725,745	12,304,249	3,393,130	10,861,893
	May 10	2,880,997	11,010,756	2,711,435	13,309,427
	May 17	3,640,142	13,695,538	3,052,285	14,110,713
Total Four Weeks		16,317,836	46,612,562	11,994,315	48,840,346
January 1 to May 17		79,445,726	193,731,000	67,244,185	189,759,997





REFINED SUGAR - Cont'd.

Item	Date	1 9 4 7		1 9 4 6	
		Beet	Cane	Beet	Cane
Sales Yellow	April 26	-	1,902,050	-	1,544,905
and	May 3	-	1,892,714	-	1,456,200
Brown	May 10	-	1,690,560	-	1,761,590
	May 17	-	1,818,959	-	1,694,260
Total Four Weeks		-	7,304,283	-	6,456,955
January 1 to May 17		-	34,206,579	-	30,848,772
Total Sales	April 26	5,070,952	11,504,069	2,837,465	12,103,218
Domestic + Exports	May 3	4,725,745	14,196,963	3,393,130	12,318,093
	May 10	2,880,997	12,701,316	2,711,435	15,071,017
	May 17	3,640,142	15,514,497	3,052,285	15,804,973
Total Four Weeks		16,317,836	53,916,845	11,994,315	55,297,301
January 1 to May 17		79,445,726	227,937,579	67,244,185	220,608,769
Adjustments for Period		-13,300	- 2,254	-2,600	-23,019
Adjustments since January 1		-42,600	-243,030	-2,400	- 6,684

Stock on Hand at End of Period

81,729,059      81,412,671      63,689,510      89,157,959

EXPORTS OF CANADIAN REFINED SUGAR - 1947

(Compiled by External Trade Branch)

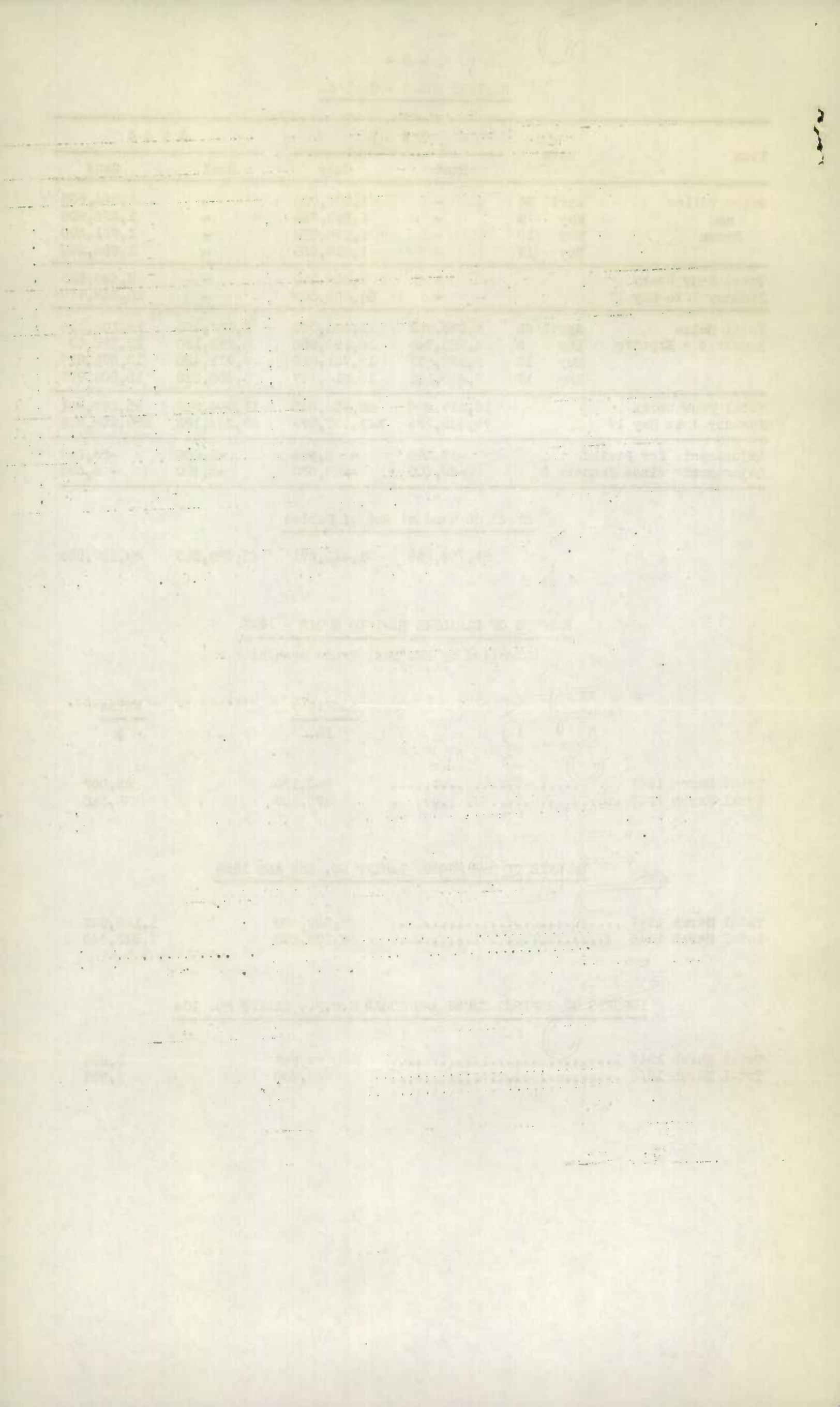
	Quantity	Value
	lb.	\$
Total March 1947 .....	500,100	35,007
Total March 1946 .....	472,100	28,580

IMPORTS OF RAW SUGAR, TARIFF NO. 135 AND 135B

Total March 1947 .....	28,309,400	1,128,047
Total March 1946 .....	69,273,100	2,543,640

IMPORTS OF REFINED SUGAR AND SUGAR N.O.P., TARIFF NO. 134

Total March 1947 .....	98,900	3,876
Total March 1946 .....	49,700	1,922





WORLD SUGAR PRODUCTION SHOWS INCREASE\*

World production of beet and cane sugar for the 1946-47 season is now estimated at 30,646,000 short tons (raw value), compared with 26,304,000 tons in 1945-46 and the 5-year (1935-39) average of 34,783,000 tons. The largest increase was in North America, including the West Indies, and in Europe. Modest increases are reported for South America, Oceania, and Africa. Asia is the only Continent showing a decline, and it is slight. The return to more normal conditions in Europe made possible a larger sugar-beet output. In North America and the West Indies, growing conditions for production of both cane and beet sugar have continued favorable.

The anticipated 16-per cent increase in production this season is not expected to provide sufficient sugar to meet total world requirements but generally will provide somewhat more for consumption than in last season.

In North and Central America including the West Indies, the present outlook is for a production of 10,897,000 tons, compared with 8,939,000 tons in 1945-46 and 7,945,000 in 1944-45. The largest increases are reported in Cuba, the United States, and Puerto Rico; however, nearly all countries reported slight increases. The near-record Cuban crop of 6,000,000 tons is above that reported in December 1946, and reflects the favorable harvesting season which is just drawing to a close. In 1945-46, 4,476,000 tons were produced in Cuba.

The recovery of the European sugar-beet industry has been substantial with production now expected to total 5,484,000 tons, compared with 3,852,000 tons in 1945-46 and a prewar (1935-39) average of 7,408,000 tons. German production will be near 50 per cent of the prewar average, while Belgium and the Netherlands are back to normal. In the United Kingdom, production is expected to exceed the prewar average by 25 per cent.

Production in all South American countries, except in Surinam and Uruguay, which are very minor producers, output is reported larger than in last year. The entire Continent is now expected to produce 3,073,000 tons, compared with 2,621,000 in 1945-46 and a prewar average (1935-39) of 2,410,000 tons. Brazil, historically the largest producer, reports a probable production of 1,520,000 tons, compared with 1,320,000 last season.

Production data thus far available on Asia indicates a decided drop from prewar and a small decline from that of a year ago. The present estimate is 6,569,000 tons, compared with 6,722,000 tons last season and the 5-year (1935-39) average of 10,890,000 tons. Recovery of Asia's sugar productive capacity is expected to be slow. War damage in the Netherlands Indies Philippines, Formosa, and Japan has reduced production in these areas to a small percentage of prewar. .... India reports a drop to 5,900,000 tons, compared with 6,033,000 tons last season.

---

\* Source: Foreign Crops and Markets,  
Volume 54, No. 20,  
Office of Foreign Agricultural Relations,  
United States Department of Agriculture,  
Washington, D.C.



1010766668

