

32 013

PROPERTY OF THE LIBRARY
No. 1
R
DOMINION BUREAU OF STATISTICS

CANADA
DEPARTMENT OF TRADE AND COMMERCE
DOMINION BUREAU OF STATISTICS
AGRICULTURAL BRANCH

Vol. 9

No. 11

CANADIAN SUGAR STATISTICS

for the four weeks period ended

NOVEMBER 2, 1929

Published by Authority of the Hon. James Malcolm, M.P.,
Minister of Trade and Commerce

♦ ♦ ♦

OTTAWA

1929

THE UNIVERSITY OF CHICAGO
LIBRARY

1911

1911

1911

1911

THE UNIVERSITY OF CHICAGO

LIBRARY

DEPARTMENT OF TRADE AND COMMERCE
DOMINION BUREAU OF STATISTICS
AGRICULTURAL BRANCH
OTTAWA

(Issued November 30th. 1929)

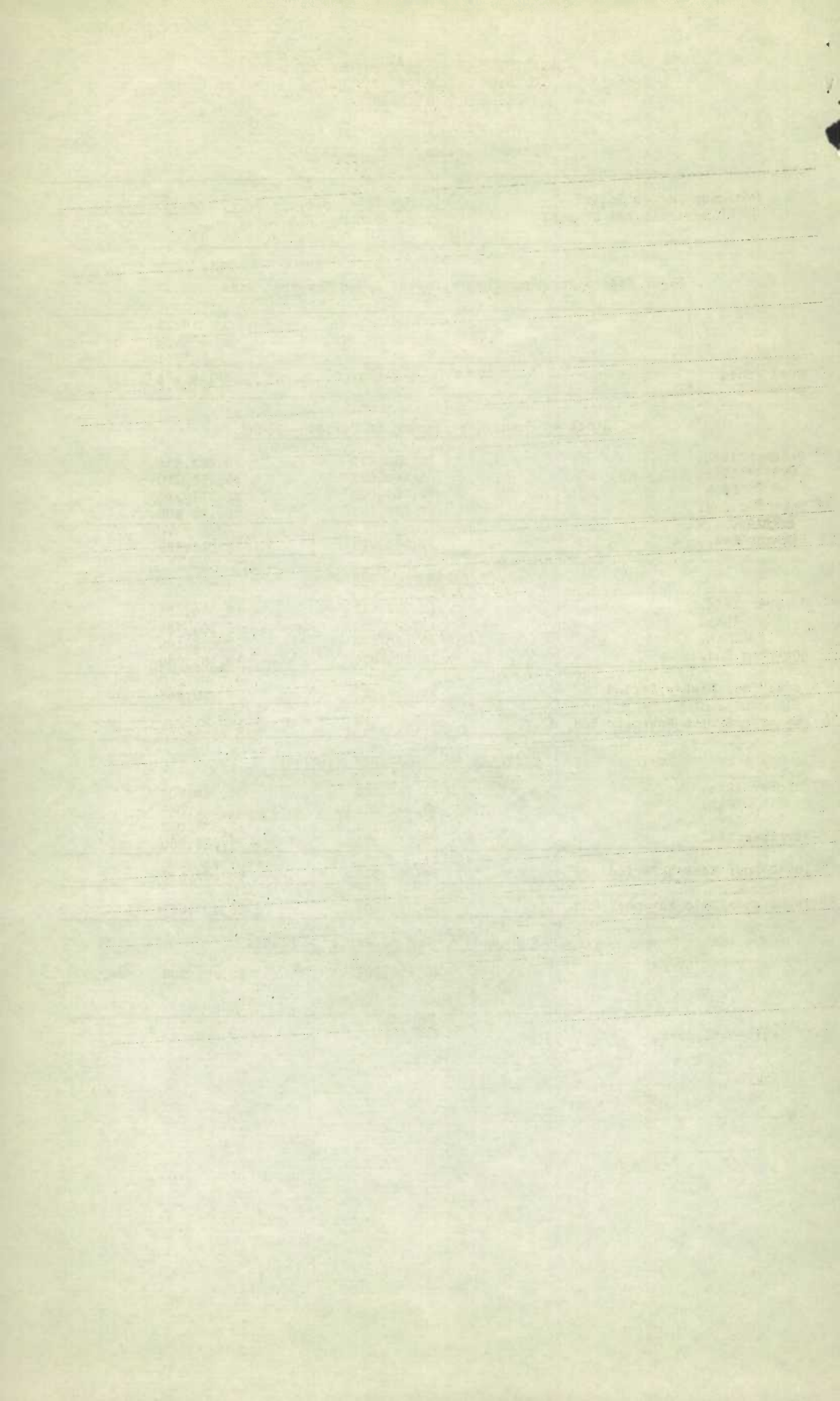
Dominion Statistician: R. H. Coats, B.A., F.S.S., (Hon.), F.R.S.C.
Chief, Agricultural Branch: F. J. Harding, B.A., F.S.S.

Sugar Report for Four Week's Period Ended November 2nd. 1929.

RAW SUGAR

Week ended	1 9 2 9	1 9 2 8
<u>Stock on Hand at Beginning of Period - Pounds</u>		
October 12th.	59,310,670	39,665,578
" 19th.	45,260,053	31,755,720
" 26th.	42,789,600	35,911,393
November 2nd.	51,810,151	30,108,803
January 1st.	39,785,728	59,011,455
<u>Receipts - Pounds</u>		
October 12th.	27,732,611	13,838,651
" 19th.	19,220,551	25,704,739
" 26th.	29,220,678	7,773,468
November 2nd.	18,524,875	17,101,779
Total Four Week's Period	91,698,495	64,418,637
January 1st. to November 2nd. 1/	791,404,228	761,918,569
<u>Meltings and Shipments - Pounds</u>		
October 12th.	21,733,228	21,748,509
" 19th.	21,690,784	21,549,066
" 26th.	20,300,127	13,576,058
November 2nd.	20,732,174	11,688,880
Total Four Week's Period	84,406,313	68,562,513
January 1st. to November 2nd. 1/	784,587,104	785,408,322
<u>Stock on Hand at End of Period - Pounds</u>		
	46,602,352	35,521,702

1/ Revised figures.



REFINED SUGAR
(Cane and Beet)

Week ended	1929	1928
<u>Stock on Hand at Beginning of Period - Pounds</u>		
October 12th	69,840,007	63,174,264
" 19th	70,960,031	67,255,624
" 26th	77,476,631	74,127,510
November 2nd	87,994,080	76,980,512
January 1st	102,862,903	98,930,220
<u>Manufactured - Granulated - Pounds</u>		
October 12th	18,749,429	21,114,094
" 19th	22,671,290	24,198,218
" 26th	27,341,680	21,181,907
November 2nd	27,412,925	21,089,029
Total Four Week's Period	96,175,324	87,583,248
January 1st to November 2nd	697,472,077	702,679,998
<u>Manufactured - Yellow & Brown - Pounds</u>		
October 12th	2,671,216	2,740,306
" 19th	2,448,841	2,917,325
" 26th	1,757,307	1,569,055
November 2nd	2,106,819	2,126,775
Total Four Week's Period	8,984,183	9,353,461
January 1st to November 2nd	78,045,952	80,335,497
<u>Total Manufactured - Pounds</u>		
October 12th	21,420,645	23,854,400
" 19th	25,120,131	27,115,543
" 26th	29,098,987	22,750,962
November 2nd	29,519,744	23,215,804
Total Four Week's Period	105,159,507	96,936,709
January 1st to November 2nd	775,518,029	783,015,495
<u>Total Domestic Shipments - Pounds</u>		
October 12th	18,795,639	19,159,660
" 19th	17,952,878	19,458,222
" 26th	16,660,179	19,389,959
November 2nd	15,476,953	16,859,748
Total Four Week's Period	68,885,649	74,867,589
January 1st to November 2nd	751,927,986	751,271,833



Faint header text, possibly a title or page number, located at the top of the page.

Faint section header or title text, centered on the page.

First block of faint, illegible text, appearing as a paragraph or list of items.

Second faint section header or title text, centered on the page.

Second block of faint, illegible text, continuing the content from the first block.

Third faint section header or title text, centered on the page.

Third block of faint, illegible text, continuing the content from the second block.

Fourth faint section header or title text, centered on the page.

Fourth block of faint, illegible text, continuing the content from the third block.

Fifth faint section header or title text, centered on the page.

Fifth block of faint, illegible text, continuing the content from the fourth block.

Week Ended	1929	1928
<u>Total Export Shipments - Pounds</u>		
October 12th	1,504,982	613,380
" 19th	650,653	785,435
" 26th	1,921,359	508,001
November 2nd.	706,706	488,936
Total Four Week's Period	4,783,700	2,395,752
January 1st. to November 2nd.	25,122,777	47,826,250
<u>Shipments - Granulated - Pounds</u>		
October 12th	18,208,042	17,881,489
" 19th	16,497,979	18,184,585
" 26th.	16,747,398	17,295,758
November 2nd.	14,493,631	15,284,466
Total Four Week's Period	65,947,650	68,646,298
January 1st. to November 2nd.	699,792,533	719,545,754
<u>Shipments - Yellow & Brown - Pounds</u>		
October 12th	2,092,579	1,891,551
" 19th	2,105,552	2,059,072
" 26th	1,833,540	2,502,202
November 2nd	1,690,028	2,064,218
Total Four Week's Period	7,721,699	8,617,043
January 1st. to November 2nd.	77,258,234	79,552,329
<u>Total Shipments - Pounds</u>		
October 12th	20,300,621	19,773,040
" 19th	18,603,531	20,243,657
" 26th	18,581,538	19,897,960
November 2nd.	16,183,659	17,348,684
Total Four Week's Period	73,669,349	77,263,341
January 1st. to November 2nd.	777,050,767	799,098,083
<u>Stock on Hand at End of Period - Pounds</u>		
	101,330,165	82,847,632

TABLE OF CONTENTS

Page
Introduction 1
Chapter I 10
Chapter II 20
Chapter III 30
Chapter IV 40
Chapter V 50
Chapter VI 60
Chapter VII 70
Chapter VIII 80
Chapter IX 90
Chapter X 100

INDEX

Page
Introduction 1
Chapter I 10
Chapter II 20
Chapter III 30
Chapter IV 40
Chapter V 50
Chapter VI 60
Chapter VII 70
Chapter VIII 80
Chapter IX 90
Chapter X 100

APPENDIX

Page
Appendix A 110
Appendix B 120
Appendix C 130
Appendix D 140
Appendix E 150
Appendix F 160
Appendix G 170
Appendix H 180
Appendix I 190
Appendix J 200

BIBLIOGRAPHY

Page
Bibliography 210
Bibliography 220
Bibliography 230
Bibliography 240
Bibliography 250
Bibliography 260
Bibliography 270
Bibliography 280
Bibliography 290
Bibliography 300

NOTES

Page
Notes 310
Notes 320
Notes 330
Notes 340
Notes 350
Notes 360
Notes 370
Notes 380
Notes 390
Notes 400

IMPORTS OF RAW AND REFINED SUGAR, SEPTEMBER, 1929

(Compiled by the External Trade Branch)

RAW SUGAR

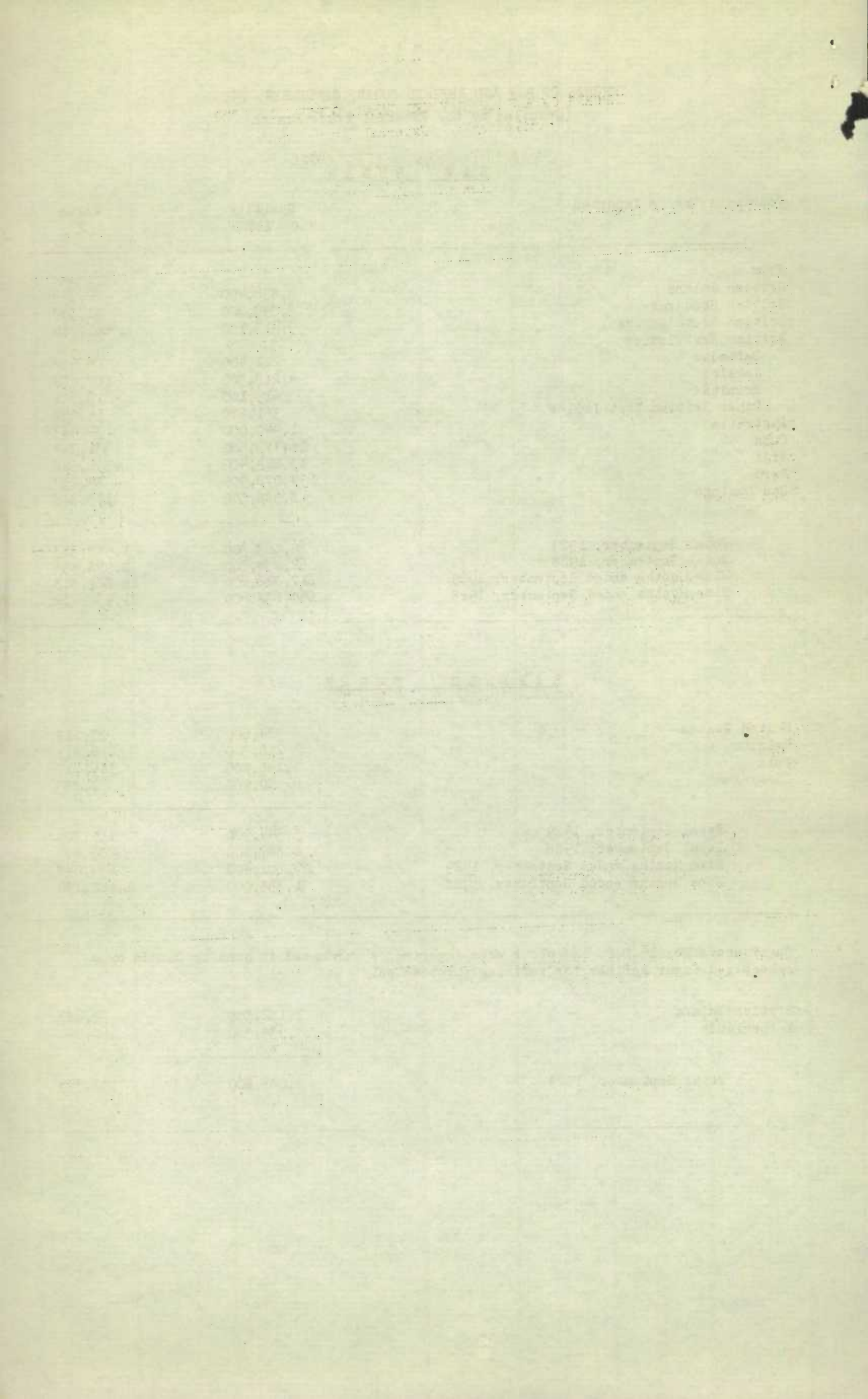
Countries Whence Imported	Quantity Lbs.	Value \$
From		
British Guiana	2,896,400	82,349
British Honduras	3,092,300	51,340
British South Africa	9,413,100	261,216
British West Indies		
Barbados	221,400	6,602
Jamaica	4,268,500	107,659
Trinidad	615,100	15,151
Other British West Indies	551,200	14,057
Australia	1,440,000	34,443
Cuba	16,779,500	331,358
Fiji	13,224,400	392,528
Peru	4,072,900	89,232
San Domingo	8,988,500	173,378
Total September, 1929	65,563,300	1,559,313
Total September, 1928	62,434,300	1,998,556
Nine Months ended September, 1929	617,822,600	15,821,513
Nine Months ended September, 1928	660,638,600	21,932,292

REFINED SUGAR

United States	924,600	27,717
Belgium	210,300	6,817
Cuba	4,140,000	114,317
Hicaragua	70,000	1,855
Total September, 1929	5,344,900	150,706
Total September, 1928	4,887,000	203,892
Nine Months ended September, 1929	27,801,400	834,248
Nine Months ended September, 1928	31,395,000	1,222,182

Sugar above No. 16 D.S. in colour when imported or purchased in bond in Canada by a recognized Sugar Refiner for refining purposes only.

British Guiana	1,152,500	32,283
Netherlands	7,935,300	160,690
Total September, 1929	9,087,800	192,973



EXPORTS OF CANADIAN REFINED SUGAR

Countries of Destination of Canadian Refined Sugar
exported during October, 1929.

(Compiled by the External Trade Branch)

Countries of Destination	October, 1929	
	Quantity Lbs.	Value \$
United States	300,000	14,055
British Guiana	27,100	1,514
British Honduras	135,400	7,057
British South Africa	1,238,000	68,709
British West Indies		
Barbados	4,200	257
Jamaica	210,700	9,792
Trinidad	137,800	7,369
Other British West Indies	71,100	3,189
Bermuda	112,300	4,868
French West Indies	300	10
Japan	500	27
Newfoundland	2,586,300	138,026
St. Pierre and Miquelon	132,800	4,366
Virgin Islands	13,500	754

Total October, 1929	4,970,000	260,001
Total October, 1928	3,400,500	198,191
Ten Months ended October, 1929	21,199,600	1,033,031
Ten Months ended October, 1928	43,524,500	2,211,744



1010682546

STATISTICAL INFORMATION
STATISTIQUES

Code	Year	Description
1010682546	1980	STATISTICAL INFORMATION
1010682546	1981	STATISTICAL INFORMATION
1010682546	1982	STATISTICAL INFORMATION
1010682546	1983	STATISTICAL INFORMATION
1010682546	1984	STATISTICAL INFORMATION
1010682546	1985	STATISTICAL INFORMATION
1010682546	1986	STATISTICAL INFORMATION
1010682546	1987	STATISTICAL INFORMATION
1010682546	1988	STATISTICAL INFORMATION
1010682546	1989	STATISTICAL INFORMATION
1010682546	1990	STATISTICAL INFORMATION
1010682546	1991	STATISTICAL INFORMATION
1010682546	1992	STATISTICAL INFORMATION
1010682546	1993	STATISTICAL INFORMATION
1010682546	1994	STATISTICAL INFORMATION
1010682546	1995	STATISTICAL INFORMATION
1010682546	1996	STATISTICAL INFORMATION
1010682546	1997	STATISTICAL INFORMATION
1010682546	1998	STATISTICAL INFORMATION
1010682546	1999	STATISTICAL INFORMATION
1010682546	2000	STATISTICAL INFORMATION
1010682546	2001	STATISTICAL INFORMATION
1010682546	2002	STATISTICAL INFORMATION
1010682546	2003	STATISTICAL INFORMATION
1010682546	2004	STATISTICAL INFORMATION
1010682546	2005	STATISTICAL INFORMATION
1010682546	2006	STATISTICAL INFORMATION
1010682546	2007	STATISTICAL INFORMATION
1010682546	2008	STATISTICAL INFORMATION
1010682546	2009	STATISTICAL INFORMATION
1010682546	2010	STATISTICAL INFORMATION
1010682546	2011	STATISTICAL INFORMATION
1010682546	2012	STATISTICAL INFORMATION
1010682546	2013	STATISTICAL INFORMATION
1010682546	2014	STATISTICAL INFORMATION
1010682546	2015	STATISTICAL INFORMATION
1010682546	2016	STATISTICAL INFORMATION
1010682546	2017	STATISTICAL INFORMATION
1010682546	2018	STATISTICAL INFORMATION
1010682546	2019	STATISTICAL INFORMATION
1010682546	2020	STATISTICAL INFORMATION
1010682546	2021	STATISTICAL INFORMATION
1010682546	2022	STATISTICAL INFORMATION