

32 013

PROPERTY OF THE LIBRARY

RECEIVED 25 10 1929

DOMINION BUREAU OF STATISTICS

c-1

CANADA
DEPARTMENT OF TRADE AND COMMERCE
DOMINION BUREAU OF STATISTICS
AGRICULTURAL BRANCH

Vol. 9

No. 8

CANADIAN SUGAR STATISTICS

for the four weeks period ended

AUGUST 10, 1929

Published by Authority of the Hon. James Malcolm, M.P.,
Minister of Trade and Commerce

...

OTTAWA

1929

1912

DEPARTMENT OF COMMERCE AND LABOR
BUREAU OF STATISTICS
MONTHLY REPORT

STATISTICS OF FOREIGN TRADE

EXPORTS OF MANUFACTURES

1912

Published by the Bureau of Statistics, Department of Commerce and Labor

1912

DEPARTMENT OF TRADE AND COMMERCE
DOMINION BUREAU OF STATISTICS
AGRICULTURAL BRANCH
OTTAWA

(Issued September 14th, 1929)

Dominion Statistician: R.H. Coats, B.A., F.S.S. (Hon.), F.R.S.C.
Chief, Agricultural Branch: F.J. Horning, B.A., F.S.S.

Sugar Report for Four Week's Period Ended March 23rd, 1929.

RAW SUGAR

Week ended 1 9 2 9 1 9 2 8

Stocks on Hand at Beginning of Period - Pounds

July 20th	90,614,898	80,163,734
" 27th	99,507,573	92,467,147
Aug. 3rd	90,897,213	81,878,978
" 10th	70,649,836	59,434,928

January 1st 39,785,728 59,011,455

Receipts - Pounds

July 20th	32,469,205	32,792,753
" 27th	15,715,045	7,940,356
Aug. 3rd	4,284,589	1,202
" 10th	7,249,576	8,509,811

Total Four Weeks' Period 59,718,415 49,244,122

January 1st to August 10th 476,027,864 545,284,627

Meltings and Shipments - Pounds

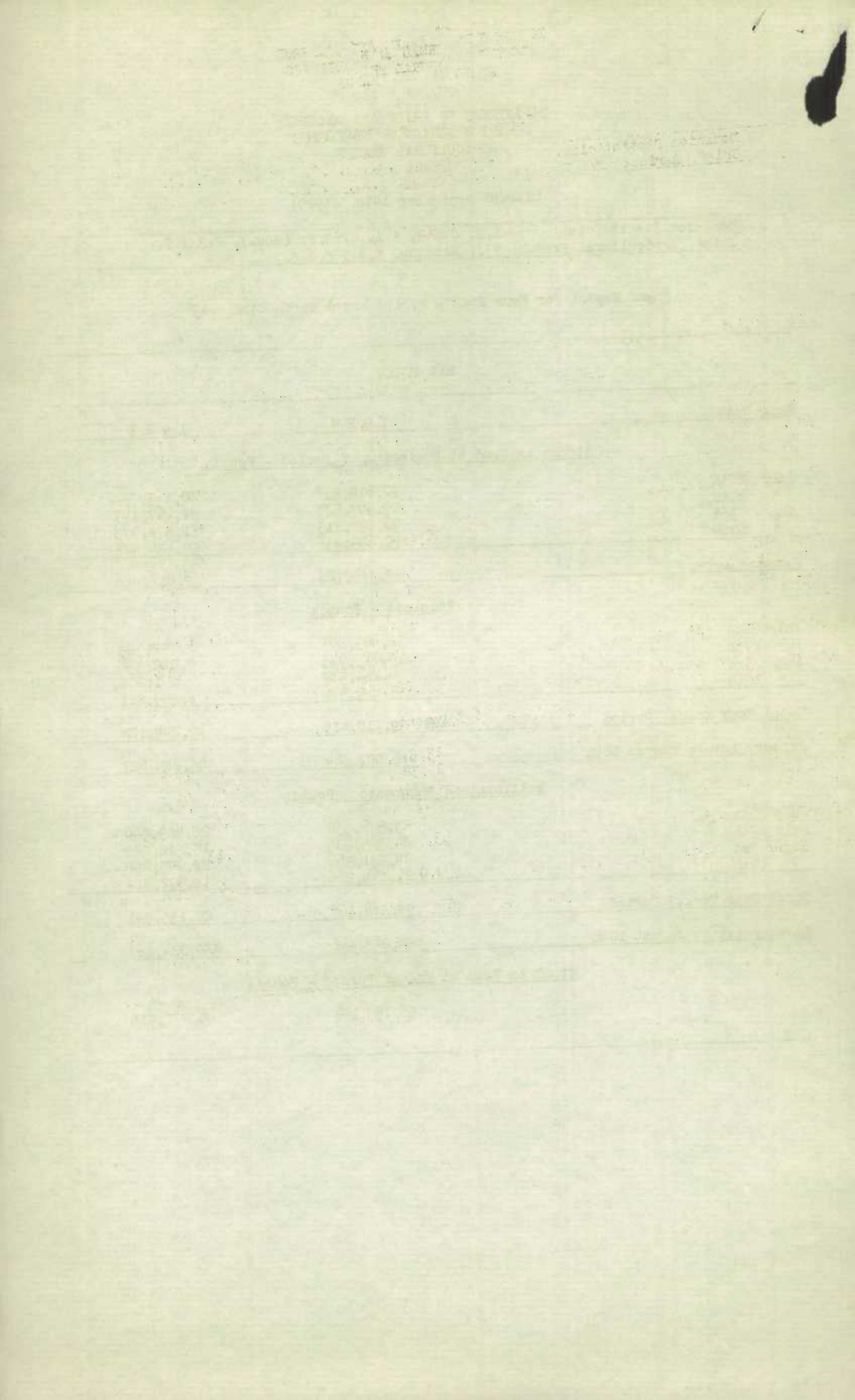
July 20th	23,576,530	20,489,340
July 27th	24,325,405	18,528,525
Aug. 3rd	24,531,966	22,445,252
" 10th	21,144,266	18,672,824

Total Four Weeks' Period 93,578,167 80,135,941

January 1st to August 10th 459,058,446 555,024,167

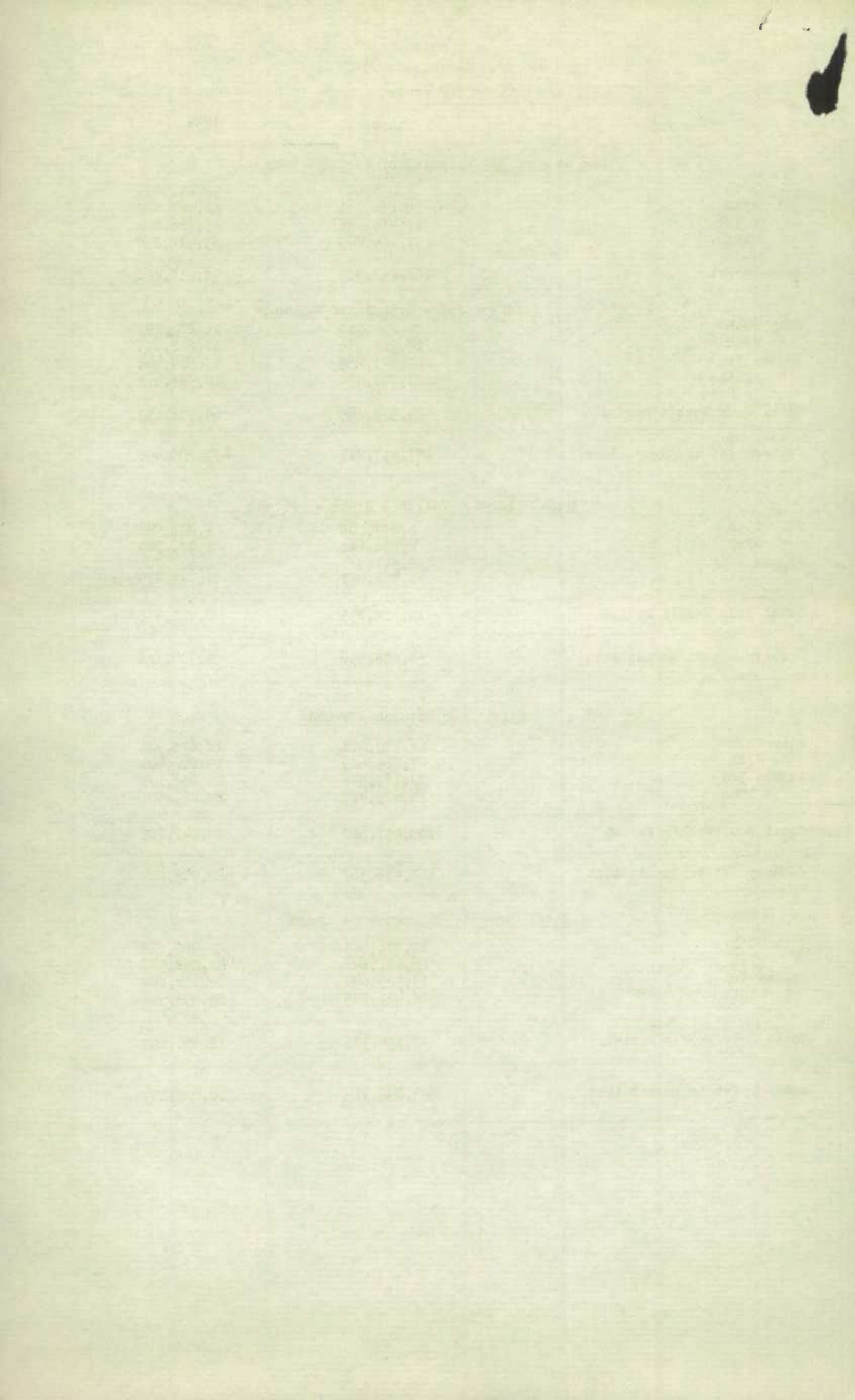
Stock on Hand at End of Period - Pounds

56,755,146 49,271,915

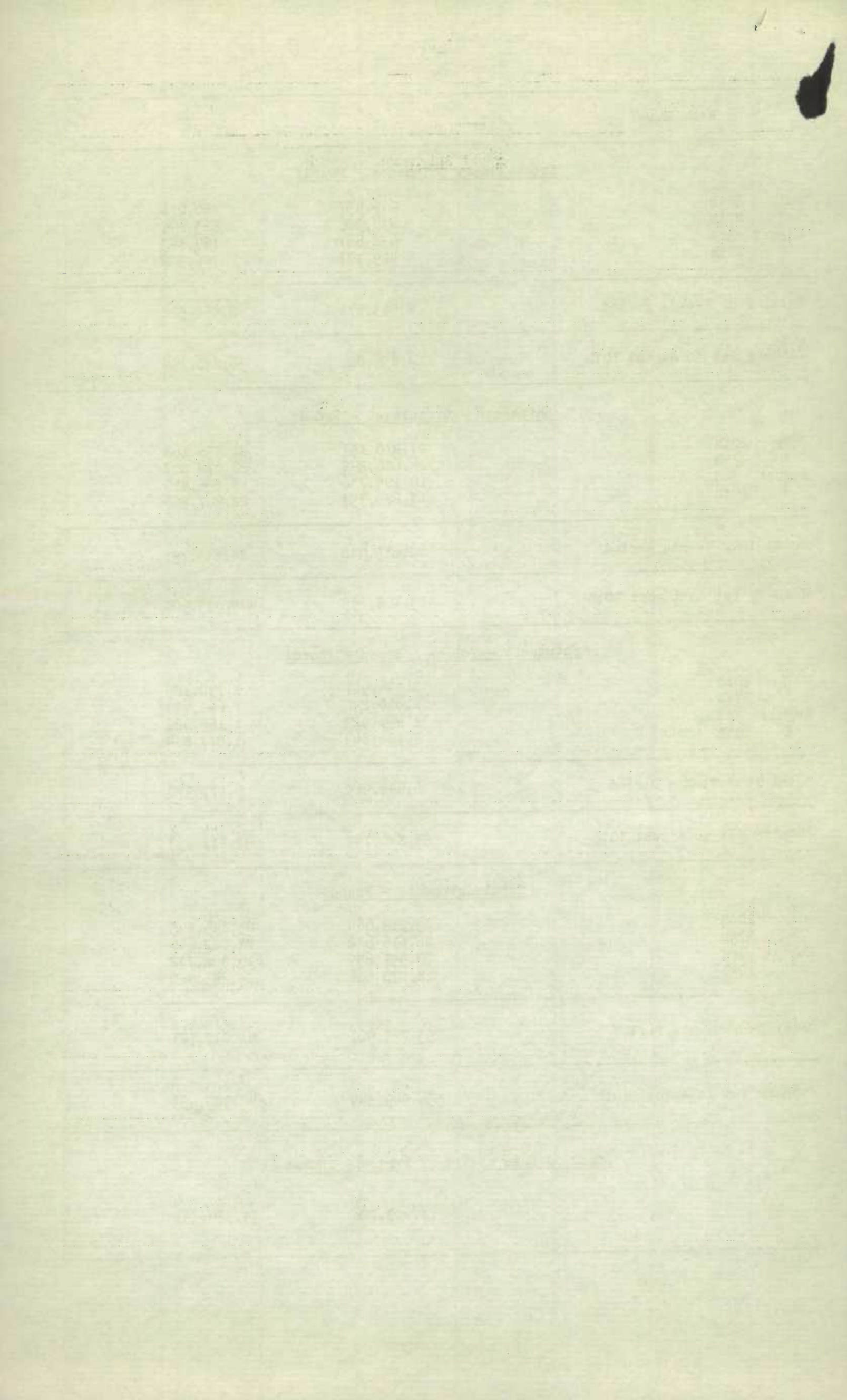


REFINED SUGAR
(Cane and Beet)

Week Ended	1929	1928
<u>Stock at Hand at Beginning of Period - Pounds</u>		
July 20th	73,076,007	92,811,004
" 27th	66,832,961	88,287,092
August 3rd	67,480,958	83,766,848
" 10th	71,106,845	83,916,290
January 1st	102,862,903	98,930,220
<u>Manufactured - Granulated - Pounds</u>		
July 20th	20,292,810	16,801,399
" 27th	24,303,936	17,222,653
August 3rd	21,641,665	17,524,409
" 10th	23,740,434	18,389,672
Total Four Week's Period	89,978,845	69,938,133
January 1st to August 10th	457,437,811	474,205,498
<u>Manufactured - Yellow & Brown - Pounds</u>		
July 20th	2,677,208	1,821,582
" 27th	2,960,693	1,979,749
August 3rd	2,541,881	2,527,765
" 10th	1,933,053	1,873,879
Total Four Week's Period	10,112,835	8,202,975
January 1st to August 10th	54,558,556	55,704,326
<u>Total Manufactured - Pounds</u>		
July 20th	22,970,018	18,622,981
" 27th	27,264,629	19,202,401
August 3rd	24,183,546	20,052,174
" 10th	25,673,487	20,263,551
Total Four Week's Period	100,091,680	78,141,108
January 1st to August 10th	511,996,367	529,909,824
<u>Total Domestic Shipments - Pounds</u>		
July 20th	28,236,403	22,960,822
" 27th	26,141,646	22,358,947
August 3rd	19,925,032	19,132,889
" 10th	18,451,305	23,498,541
Total Four Week's Period	92,754,386	88,451,199
January 1st to August 10th	523,092,714	510,025,259



Week Ended	1929	1928
<u>Total Export Shipments - Pounds</u>		
July 20th	976,657	186,071
" 27th	474,986	863,699
August 3rd	632,627	769,843
" 10th	419,301	746,909
Total Four Week's Period	2,503,571	2,566,522
January 1st to August 10th	13,856,826	38,880,394
<u>Shipments - Granulated - Pounds</u>		
July 20th	27,218,157	21,356,168
" 27th	24,606,342	22,079,207
August 3rd	19,105,736	18,736,810
" 10th	17,685,757	22,667,566
Total Four Week's Period	88,615,992	84,839,751
January 1st to August 10th	483,108,795	495,093,900
<u>Shipments - Yellow & Brown - Pounds</u>		
July 20th	1,994,907	1,790,725
" 27th	2,010,290	1,643,439
August 3rd	1,451,923	1,165,922
" 10th	1,184,849	1,577,884
Total Four Week's Period	6,641,969	6,177,970
January 1st to August 10th	53,840,749	53,811,753
<u>Total Shipments - Pounds</u>		
July 20th	29,213,064	23,146,893
" 27th	26,616,632	23,722,646
August 3rd	20,557,659	19,902,732
" 10th	18,870,606	24,245,450
Total Four Week's Period	95,257,961	91,017,721
January 1st to August 10th	536,949,544	548,905,653
<u>Stock on Hand at End of Period - Pounds.</u>		
	77,909,726	79,934,391



IMPORTS OF RAW AND REFINED SUGAR, JULY, 1929.
(Compiled by the External Trade Branch)

RAW SUGAR

Countries Whence Imported	Quantity Lbs.	Value \$
From:		
British Guiana	5,560,000	145,854
British West Indies		
Barbados	21,262,100	568,118
Jamaica	14,156,400	380,538
Trinidad	31,121,700	810,236
Other British West Indies	3,778,900	100,356
Cuba	11,972,900	207,303
Fiji	2,708,100	88,258
Hayti	423,000	8,524
Honduras	1,896,000	29,388
Peru	2,688,000	45,696
San Domingo	2,642,800	51,537
Total July, 1929	98,209,900	2,435,808
Total July, 1928	79,769,600	2,708,350
Seven Months ended July 1929	451,038,600	11,601,421
Seven Months ended July 1928	501,110,600	16,811,178

REFINED SUGAR

From		
United States	504,200	15,224
Belgium	276,000	8,509
Cuba	940,000	27,073
Hong Kong	100	6
Jamaica	500	15
Netherlands	170,000	6,191
Nicaragua	300,000	7,950
Total July 1929	2,190,800	64,968
Total July 1928	6,894,100	226,764
Seven Months ended July, 1929	17,159,000	528,198
Seven Months ended July, 1928	20,991,100	823,806

Sugar above No. 16 in colour when imported or purchased in bond in Canada by a recognized Sugar Refiner for refining purposes only.

British Guiana	674,900	20,247
Barbados	673,300	16,991
Total July 1929	1,348,200	37,238

Handwritten text at the top of the page, possibly a title or header.



Handwritten text on the first line of the page.

Handwritten text on the second line of the page.

Handwritten text on the third line of the page.

Handwritten text on the fourth line of the page.

Handwritten text on the fifth line of the page.

Handwritten text on the sixth line of the page.

Handwritten text on the seventh line of the page.

Handwritten text on the eighth line of the page.

Handwritten text on the ninth line of the page.

Handwritten text on the tenth line of the page.

Handwritten text on the eleventh line of the page.

Handwritten text on the twelfth line of the page.

Handwritten text on the thirteenth line of the page.

Handwritten text on the fourteenth line of the page.

EXPORTS OF CANADIAN REFINED SUGAR

Countries of Destination of Canadian Refined Sugar
exported during July, 1929.

(Compiled by the External Trade Branch)

Countries of Destination	July, 1929	
	Quantity Lbs.	Value \$
British Guiana	76,800	3,369
British Honduras	194,700	8,766
British West Indies		
Barbados	70,300	2,691
Jamaica	161,700	8,549
Trinidad	125,700	6,707
Other British West Indies	97,100	4,947
Bermuda	27,100	611
Newfoundland	1,272,200	50,578
French West Indies	600	35
St. Pierre and Miquelon	200	11
Virgin Islands	10,000	282
Total July, 1929	2,036,400	86,546
Total July, 1928	4,264,800	250,296
Seven Months ended July, 1929	12,184,400	574,849
Seven Months ended July, 1928	34,451,500	1,693,928

STATISTICS CANADA LIBRARY
BIBLIOTHÈQUE STATISTIQUE CANADA



1010682543