

32-202

NOT FOR LOAN
NE S'EMPRUNTE PAS

CANADA
DEPARTMENT OF TRADE AND COMMERCE
DOMINION BUREAU OF STATISTICS
CENSUS OF INDUSTRY

STATISTICS STATISTIQUE
CANADA CANADA

AUG 16 2010
ADUT

REPORT
on the

LIBRARY
BIBLIOTHÈQUE

BISCUIT & CONFECTIONERY INDUSTRY

in
CANADA
1925

+++

Published by authority of the Hon. James Malcolm, M. P.,
Minister of Trade and Commerce

OTTAWA
1927

NOT FOR LOAN
NE 2 EMPLOYEE PAS

82-202

LIBRARY
BIBLIOTHEQUE

NOTE.- The statistics published in the present statement include only the statistics of such manufacturing establishments as make Biscuits and confectionery as their principal products. The statistics relating to specific products are therefore not to be regarded as comprehensive, as products like, Biscuits and confectionery are also found as secondary products of the following industries:-

1. Bread and other bakery products
2. Cocoa and chocolate
3. Coffee and spices
4. Medicinal and pharmaceutical preparations

DEPARTMENT OF TRADE AND COMMERCE

DOMINION BUREAU OF STATISTICS

CENSUS OF INDUSTRY

OTTAWA - CANADA

Dominion Statistician: R. H. Coats, B.A., F.S.S. (Hon.), F.R.S.C.
 Chief, Census of Industry: J. C. Macpherson.

THE BISCUIT AND CONFECTIONERY INDUSTRY IN CANADA, 1925

Ottawa, Aug., 1927.- A report on the Biscuit and Confectionery Industry in Canada is herewith presented for the calendar year 1925. The number of individual plants reported to the Bureau in 1925 totalled 320 being a decrease of 1 from the preceding year. The provinces of Nova Scotia, Quebec and British Columbia show increases in the number of operating plants, whilst the remaining provinces show decreases.

The distribution of plants by provinces for each of the years 1924 and 1925 was as follows:

| Provinces | 1924 | 1925 |
|----------------------|------|------|
| Prince Edward Island | 3 | 1 |
| Nova Scotia | 11 | 13 |
| New Brunswick | 12 | 11 |
| Quebec | 42 | 46 |
| Ontario | 171 | 169 |
| Manitoba | 20 | 19 |
| Saskatchewan | 7 | 5 |
| Alberta | 15 | 13 |
| British Columbia | 40 | 43 |
| Totals, Canada | 321 | 320 |

Of the total factories reporting in 1925, the number making biscuits only was 19, biscuits and confectionery 20, ice cream only 29 and confectionery only 252. Statistics of the chewing gum industry are included in the confectionery section of this report.

COMPARATIVE STATISTICS

The principal statistics of the industry are compared by provinces in Table 1 for the calendar years 1924 and 1925. Increases appear in capital invested amounting to \$2,212,979 or 5.74 per cent, in the value of production of \$1,621,726 or 3.6 per cent and in the number of persons employed of 72. Decreases are shown in the amount paid for salaries and wages of \$1,613,931 or 13.3 per cent, in the cost of materials of \$155,658 or .67 per cent.

Table 1.- Principal Statistics compared by provinces 1924 and 1925.

| | Estab-lish-ments | Capital employed | Em-ploy-ees | Salaries and wages | Cost of Materials | Value of products |
|------------------|------------------|------------------|-------------|--------------------|-------------------|-------------------|
| 1924 | No. | \$ | No. | \$ | \$ | \$ |
| Canada | 321 | 38,557,117 | 11,886 | 12,126,701 | 23,383,625 | 45,123,629 |
| P. E. Island | 3 | 13,600 | 5 | 4,238 | 20,855 | 28,193 |
| Nova Scotia | 11 | 1,935,245 | 1,116 | 752,452 | 1,694,418 | 3,159,883 |
| New Brunswick | 12 | 2,043,149 | 668 | 536,919 | 1,403,368 | 2,562,383 |
| Quebec | 42 | 8,102,957 | 2,309 | 1,898,399 | 5,350,876 | 9,657,295 |
| Ontario | 171 | 23,059,279 | 6,194 | 7,839,133 | 12,556,004 | 24,785,238 |
| Manitoba | 20 | 1,171,359 | 476 | 468,774 | 1,009,099 | 2,125,035 |
| Saskatchewan | 7 | 78,638 | 21 | 18,393 | 24,010 | 56,893 |
| Alberta | 15 | 636,678 | 176 | 183,192 | 466,708 | 1,022,891 |
| British Columbia | 40 | 1,515,712 | 421 | 425,201 | 858,287 | 1,725,818 |
| 1925 | | | | | | |
| Canada | 320 | 40,770,096 | 11,958 | 10,512,770 | 23,227,967 | 46,745,355 |
| P. E. Island) | 14 | 3,634,745 | 1,157 | 759,438 | 1,529,937 | 3,246,004 |
| Nova Scotia) | 11 | 2,020,451 | 693 | 535,936 | 1,403,439 | 2,560,171 |
| New Brunswick | 46 | 8,078,459 | 2,911 | 2,174,106 | 5,164,207 | 9,197,134 |
| Quebec | 169 | 23,688,367 | 6,067 | 5,899,026 | 12,597,770 | 26,383,977 |
| Ontario | 19 | 1,130,864 | 483 | 472,036 | 1,056,263 | 2,301,894 |
| Manitoba | 5 | 34,040 | 18 | 17,180 | 32,779 | 54,248 |
| Saskatchewan | 13 | 605,008 | 158 | 170,762 | 463,995 | 1,067,752 |
| Alberta | 43 | 1,528,162 | 471 | 484,286 | 979,577 | 1,934,175 |
| British Columbia | | | | | | |

Date: _____
 Page: _____

The following is a list of the items received from the _____
 on the _____ day of _____, 19____.

| No. | Description | Quantity | Unit | Value |
|-----|-------------|----------|------|-------|
| 1 | ... | ... | ... | ... |
| 2 | ... | ... | ... | ... |
| 3 | ... | ... | ... | ... |
| 4 | ... | ... | ... | ... |
| 5 | ... | ... | ... | ... |
| 6 | ... | ... | ... | ... |
| 7 | ... | ... | ... | ... |
| 8 | ... | ... | ... | ... |
| 9 | ... | ... | ... | ... |
| 10 | ... | ... | ... | ... |

Total value of items received: \$ _____

This receipt is valid for the purpose of _____
 and is subject to the terms and conditions of the _____

| No. | Description | Quantity | Unit | Value |
|-----|-------------|----------|------|-------|
| 11 | ... | ... | ... | ... |
| 12 | ... | ... | ... | ... |
| 13 | ... | ... | ... | ... |
| 14 | ... | ... | ... | ... |
| 15 | ... | ... | ... | ... |
| 16 | ... | ... | ... | ... |
| 17 | ... | ... | ... | ... |
| 18 | ... | ... | ... | ... |
| 19 | ... | ... | ... | ... |
| 20 | ... | ... | ... | ... |

Total value of items received: \$ _____

Received by: _____
 Signature: _____
 Date: _____

-2-

THE BISCUIT AND CONFECTIONERY INDUSTRY IN CANADA, 1925

PRINCIPAL STATISTICS

Table 2 presents the principal statistics of the industry in the Dominion for the calendar years 1924 and 1925. A column showing the increase or decrease of each particular item by amount and approximate percentage is added to complete the table.

Table 2.- Principal Statistics Compared 1924-1925.

| Principal Statistics | 1925 | 1924 | (+Increase or Decrease (-)) | |
|------------------------------|------------|------------|-----------------------------|----------|
| | | | Amount | Per cent |
| Establishments reporting No. | 320 | 321 | - | 1 |
| Capital invested \$ | 40,770,096 | 38,557,117 | + 2,212,979 | + 5.74 |
| Employees on salaries - | | | | |
| Male No. | 1,471 | 1,356 | + 115 | + 8.50 |
| Female No. | 502 | 496 | + 6 | + 1.21 |
| Total salaries \$ | 3,461,480 | 3,286,807 | + 174,673 | + 5.31 |
| Employees on wages- | | | | |
| Male No. | 4,385 | 4,355 | + 50 | + 1.15 |
| Female No. | 5,600 | 5,679 | - 79 | - 1.39 |
| Total wages \$ | 7,051,290 | 8,839,894 | - 1,788,604 | - 20.23 |
| Cost of fuel \$ | 577,256 | 599,058 | - 21,792 | - 3.64 |
| Power employed - | | | | |
| Units No. | 1,885 | 1,720 | + 165 | + 9.60 |
| Capacity H.P. | 17,438 | 17,754 | - 316 | - 1.79 |
| Cost of materials \$ | 23,227,967 | 23,383,625 | - 155,658 | - .67 |
| Gross value of products \$ | 46,745,355 | 45,123,629 | + 1,621,726 | + 3.60 |
| Net value of products \$ | 23,517,388 | 21,740,004 | + 1,777,384 | + 8.18 |

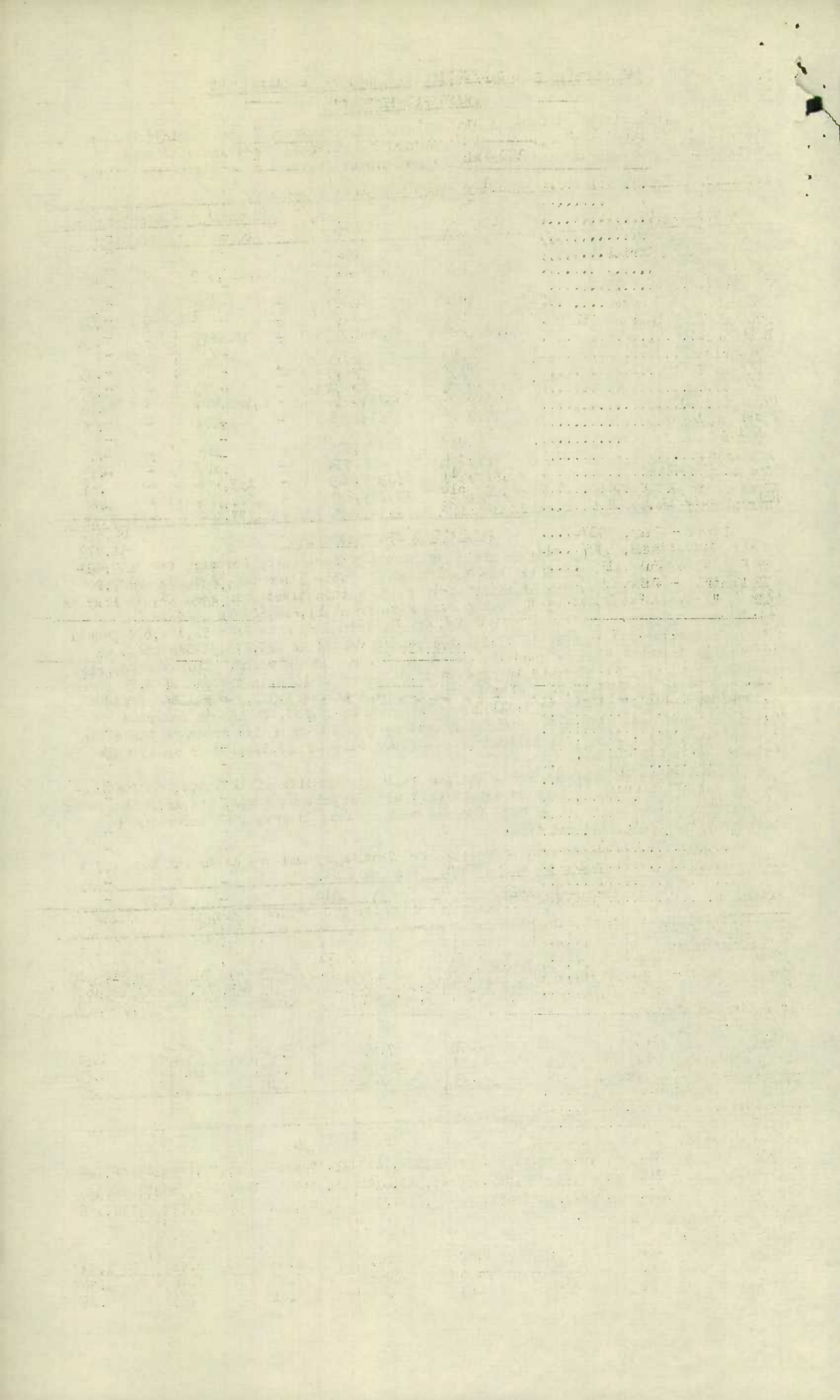
PRODUCTION STATISTICS 1925

The statistics of production in the biscuit and confectionery industry for the calendar year 1925 are presented by principal items in Table 3 for the Dominion and for each province separately. The quantity of biscuits manufactured rose from 36,215 tons in 1924 to 38,323 in 1925, whilst the value also rose from \$13,216,605 in 1924 to \$13,877,199 in 1925. The total production of confectionery rose from 91,182,874 pounds valued at \$24,771,237 in 1924 to 97,696,203 pounds valued at \$25,278,522 in 1925, an increase of 7.14 per cent in quantity and of 2.05 per cent in value. The average price per pound fell from 27.16 cents in 1924 to 25.87 cents in 1925, a decline of 4.75 per cent. Ice cream production in confectionery plants totalled 1,911,458 gallons worth \$2,674,726, in dairy plants to 3,911,305 gallons worth \$5,188,426 and in bakeries 72,931 gallons worth \$110,956. The total factory production of ice cream in Canada in 1925 was, therefore, 5,895,694 gallons of a selling value of \$7,974,108 or an average price of \$1.35 per gallon.

A summary table showing the total and per capita production of biscuits, confectionery and ice cream from all sources except that made in private homes, hotels, restaurants and boarding houses where it is made for own consumption, is presented below for the calendar years 1923, 1924 and 1925.

Per Capita production of biscuits, confectionery and ice cream for the calendar years 1923, 1924 and 1925.

| Articles | 1923 | | 1924 | | 1925 | |
|----------------------------------|------------|------------|------------|------------|-------------|------------|
| | Quantity | Value | Quantity | Value | Quantity | Value |
| Total production:- | | | | | | |
| Biscuits, plain, etc. ton | 36,397 | 13,603,037 | 36,533 | 13,352,659 | 38,572 | 13,988,175 |
| Confectionery lb. | 97,769,129 | 27,447,918 | 95,949,432 | 26,087,789 | 103,799,327 | 27,083,076 |
| Ice Cream gal. | 5,608,100 | 7,473,144 | 5,494,827 | 7,405,822 | 5,895,694 | 7,974,108 |
| Per Capita Production | | | | | | |
| Biscuits, plain, etc. lb. | 8.06 | 1.51 | 7.99 | 1.46 | 8.32 | 1.51 |
| Confectionery lb. | 10.83 | 3.04 | 10.48 | 2.85 | 11.20 | 2.92 |
| Ice Cream gal. | .62 | .83 | .60 | .81 | .63 | .86 |
| Total and per capita consumption | | | | | | |
| Totals- | | | | | | |
| Biscuits, plain, etc. lb. | 73,479,407 | 13,706,246 | 73,991,020 | 13,496,670 | 78,927,665 | 14,226,228 |
| Confectionery lb. | 98,770,637 | 28,819,950 | 97,530,430 | 26,296,889 | 106,240,956 | 27,436,356 |
| Ice Cream gal. | 5,608,100 | 7,473,144 | 5,494,827 | 7,405,822 | 5,895,694 | 7,974,108 |
| Per Capita Consumption | | | | | | |
| Biscuits, plain, etc. lb. | 8.14 | 1.52 | 8.09 | 1.47 | 8.51 | 1.53 |
| Confectionery lb. | 10.94 | 3.05 | 10.66 | 2.87 | 11.46 | 2.96 |
| Ice cream gal. | .62 | .83 | .60 | .81 | .63 | .86 |



THE BISCUIT AND CONFECTIONERY INDUSTRY IN CANADA, 1925.

PRODUCTION STATISTICS (contd)

Table 3.- Production by items for Canada and Provinces, 1925.

| Items of Production | Canada | | P. E. Island | | Nova Scotia | | New Brunswick | | Quebec | |
|-------------------------------|------------|---------------|--------------|---------------|-------------|---------------|---------------|---------------|------------|---------------|
| | Quantity | Selling Value | Quantity | Selling Value | Quantity | Selling Value | Quantity | Selling Value | Quantity | Selling Value |
| Bread Lb. | 4,973,583 | 311,569 | - | - | 4,743,571 | 293,469 | - | - | - | - |
| Buns - | - | 62,347 | - | - | - | - | - | - | - | 950 |
| Pies, cakes, etc. - | - | 592,995 | - | - | - | 169,491 | - | 28,005 | - | 104,900 |
| Puddings - | - | 19,187 | - | - | - | - | - | - | - | 62 |
| Biscuits, plain and fancy ton | 38,323 | 13,877,199 | - | - | 864 | 297,518 | 2,370 | 743,428 | 12,828 | 3,321,599 |
| Chocolate confectionery lb. | 61,362,689 | 17,343,447 | - | - | 4,473,719 | 1,612,355 | 5,677,558 | 1,164,632 | 12,985,734 | 3,711,794 |
| Sugar confectionery lb. | 36,333,514 | 7,935,075 | 6,000 | 1,500 | 1,946,059 | 606,148 | 2,846,420 | 532,538 | 10,699,832 | 1,950,936 |
| Cocoa lb. | - | - | - | - | - | - | - | - | - | - |
| Ice Cream gal. | 1,911,458 | 2,674,726 | 2,412 | 4,824 | 106,811 | 179,237 | 17,841 | 31,568 | 7,323 | 14,664 |
| Popcorn - | - | 13,599 | - | - | - | - | - | - | - | - |
| All other products - | - | 3,915,211 | - | - | - | 81,462 | - | 60,000 | - | 92,229 |
| Total Value - | - | 46,745,355 | - | 6,324 | - | 3,239,680 | - | 2,560,171 | - | 9,197,134 |

| Items of Production | Ontario | | Manitoba | | Saskatchewan | | Alberta | | British Columbia | |
|-------------------------------|------------|---------------|-----------|---------------|--------------|---------------|----------|---------------|------------------|---------------|
| | Quantity | Selling Value | Quantity | Selling Value | Quantity | Selling Value | Quantity | Selling Value | Quantity | Selling Value |
| Bread lb. | 105,012 | 7,300 | 80,000 | 7,200 | 45,000 | 3,600 | - | - | - | - |
| Buns - | - | 34,847 | - | 24,550 | - | 2,000 | - | - | - | - |
| Pies, cakes, etc. - | - | 195,899 | - | 76,400 | - | 14,400 | - | - | - | 3,900 |
| Puddings - | - | 13,785 | - | 5,130 | - | 210 | - | - | - | - |
| Biscuits, plain and fancy ton | 17,382 | 7,483,203 | 1,570 | 580,762 | - | - | 1,871 | 907,851 | 1,438 | 542,888 |
| Chocolate confectionery lb. | 33,748,189 | 9,341,523 | 2,524,695 | 978,072 | 5,654 | 2,161 | 125,514 | 44,985 | 1,823,626 | 487,925 |
| Sugar Confectionery lb. | 16,252,959 | 3,789,051 | 2,023,104 | 440,324 | 41,208 | 12,835 | 441,604 | 112,342 | 2,070,328 | 489,401 |
| Cocoa lb. | - | - | - | - | - | - | - | - | - | - |
| Ice Cream gal. | 1,456,696 | 1,978,141 | 119,105 | 156,456 | 7,045 | 11,542 | - | - | 194,225 | 298,294 |
| Popcorn - | - | 7,812 | - | 5,500 | - | - | - | 275 | - | 12 |
| All other products - | - | 3,532,416 | - | 27,500 | - | 7,500 | - | 2,299 | - | 111,805 |
| Total Value - | - | 26,383,977 | - | 2,301,894 | - | 54,248 | - | 1,067,752 | - | 1,934,175 |

THE BISCUIT AND CONFECTIONERY INDUSTRY IN CANADA 1925

CAPITAL INVESTMENT

The amount of capital invested in the industry in 1925 is shown by provinces in table 4, under two heads: (1) fixed capital represented by land, buildings, machinery and tools and (2) working capital by stocks of materials and supplies on hand, finished products on hand, and cash, trading and operating accounts and bills receivable. All of the provinces but Prince Edward Island, New Brunswick, Alberta and Manitoba show increases in total investment ranging from \$1,594,849 in Nova Scotia to \$5,402 in Saskatchewan. The total increase for the Dominion being \$2,212,973.

Table 4.— Capital Investment by Provinces, 1925

| | No. of plants reporting | Fixed Capital | | Working Capital | | Total Capital |
|------------------|-------------------------|--|--|---|---------------------------------------|---------------|
| | | Land, buildings, fixtures, machinery & tools | | Materials & supplies on hand, finished products, etc. | Cash, trading & operating accts. etc. | |
| | No. | \$ | | \$ | | \$ |
| Canada | 320 | 24,923,724 | | 6,726,871 | 9,119,501 | 40,770,096 |
| P. E. Island | 1 | 4,103 | | 397 | 146 | 4,651 |
| Nova Scotia | 13 | 2,177,790 | | 684,639 | 767,615 | 3,630,094 |
| New Brunswick | 11 | 367,288 | | 541,609 | 611,554 | 2,020,451 |
| Quebec | 46 | 5,066,945 | | 1,225,316 | 1,736,193 | 8,078,459 |
| Ontario | 169 | 14,721,868 | | 3,593,758 | 5,372,741 | 23,688,367 |
| Manitoba | 19 | 665,194 | | 227,661 | 238,009 | 1,130,864 |
| Saskatchewan | 5 | 60,939 | | 15,373 | 7,728 | 84,040 |
| Alberta | 13 | 415,943 | | 116,999 | 72,061 | 605,003 |
| British Columbia | 43 | 943,644 | | 321,069 | 263,449 | 1,528,162 |

EMPLOYMENT STATISTICS.

Statistics of employment in the biscuit and confectionery industry during the calendar year 1925 are presented in the following series of tables:—

Table 5. Employees by number, sex and remuneration.

Table 6. Employees by months.

Table 7. (a,b,c) Working time of plants and employees.

The total number of persons at employment whether on salary or wage payments is shown by sex and remuneration for the Dominion and the provinces in table 5. There was an increase in 1925 of 72 in the total number of persons employed whether on salaries or wages whilst the annual payroll decreased by \$1,613,931.

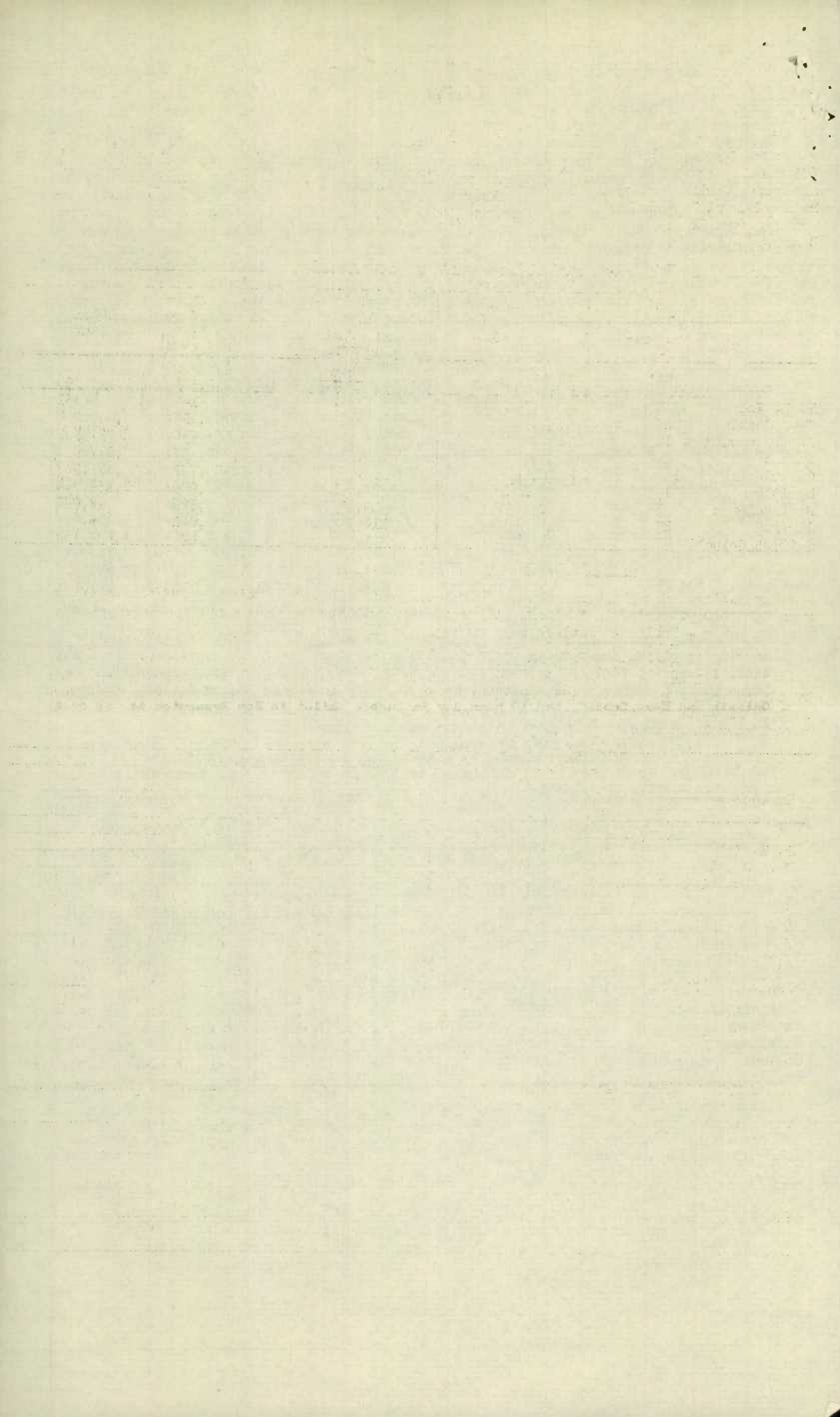
Table 5.— Employees, Salaries and Wages by Provinces, 1925.

| Provinces | Employees on Salaries | | | Employees on Wages | | |
|------------------|-----------------------|--------|-----------|--------------------|--------|-----------|
| | Male | Female | Salaries | Male | Female | Wages |
| | No. | No. | \$ | No. | No. | \$ |
| Canada | 1,171 | 522 | 3,461,450 | 1,365 | 5,600 | 7,051,290 |
| P. E. Island | — | — | — | 1 | 1 | 1,312 |
| Nova Scotia | 41 | 50 | 123,303 | 439 | 575 | 634,323 |
| New Brunswick | 70 | 35 | 187,365 | 217 | 368 | 343,571 |
| Quebec | 377 | 51 | 715,953 | 1,103 | 1,383 | 1,460,153 |
| Ontario | 316 | 333 | 2,091,368 | 2,149 | 2,769 | 3,807,633 |
| Manitoba | 59 | 10 | 132,628 | 177 | 237 | 339,343 |
| Saskatchewan | 2 | — | 3,300 | 12 | — | 13,330 |
| Alberta | 21 | 3 | 50,124 | 57 | 77 | 120,638 |
| British Columbia | 35 | 17 | 152,359 | 140 | 169 | 325,427 |

The number of wage earners employed during each month of the year is shown by sex in table 6. The months of highest employment were September and October whilst those of lowest employment were January and February. The average number employed monthly was 9,985 of whom 4,385 were males and 5,600 were females.

Table 6.— Number and sex of Employees by months, 1925

| Months | Male | Female | Total | Months | Male | Female | Total |
|---------------------------|-------|--------|--------|-----------|-------|--------|--------|
| | No. | No. | No. | | No. | No. | No. |
| January | 4,117 | 4,966 | 9,083 | July | 4,477 | 5,411 | 9,888 |
| February | 4,175 | 5,416 | 9,591 | August | 4,439 | 5,562 | 10,001 |
| March | 4,295 | 5,707 | 10,002 | September | 4,569 | 6,211 | 10,780 |
| April | 4,213 | 5,231 | 9,444 | October | 4,598 | 6,157 | 10,755 |
| May | 4,214 | 5,497 | 9,711 | November | 4,520 | 6,248 | 10,768 |
| June | 4,430 | 5,312 | 9,742 | December | 4,462 | 5,873 | 10,335 |
| Total employees in year | | | | 32,623 | | | |
| Average monthly employees | | | | 4,385 | | | |
| | | | | 5,600 | | | |
| | | | | 9,985 | | | |



Working time of plants and employees is presented in tables 7(a), 7(b) and 7(c) for the calendar year 1925 for the provinces and the Dominion. Full time operation of plants was 33.68 per cent of the total possible working time estimated by the Census of Industry at 304 days, part time 6.68 per cent while idle hours represented 9.64 per cent. In average full time operation New Brunswick ranked first with 274 days per plant. Manitoba being second with 273.79 days per plant and British Columbia third with 271.12 days. In part time operation Prince Edward Island was highest with 77 days per plant, Saskatchewan next with 60 days and Nova Scotia third with 37.23 days. Time lost through idleness was highest in Nova Scotia with 49.38 days per plant followed in order by Alberta with 39.53 days, Quebec with 38 days and Prince Edward Island with 35 days.

7(a) Working time of plants, 1925 by provinces.

| Province | No. of Plants | Days in Operation | | | Average time worked per Plant | | |
|----------------------|---------------|-------------------|--------------|-------|-------------------------------|--------------|-------|
| | | On full time | On part time | Idle | On full time | On part time | Idle |
| | | No. | No. | No. | No. | No. | No. |
| Canada | 320 | 31,402 | 6,495 | 9,383 | 254.38 | 20.30 | 29.32 |
| Prince Edward Island | 1 | 192 | 77 | 35 | 192.00 | 77.00 | 35.00 |
| Nova Scotia | 13 | 2,826 | 484 | 642 | 217.39 | 37.23 | 49.38 |
| New Brunswick | 11 | 3,014 | 15 | 315 | 274.00 | 1.36 | 28.64 |
| Quebec | 46 | 11,084 | 1,152 | 1,748 | 240.96 | 25.04 | 38.00 |
| Ontario | 169 | 43,227 | 3,599 | 4,550 | 255.78 | 21.30 | 26.92 |
| Manitoba | 19 | 5,202 | 108 | 466 | 273.79 | 5.68 | 24.53 |
| Saskatchewan | 5 | 1,161 | 300 | 59 | 232.20 | 60.00 | 11.80 |
| Alberta | 13 | 3,038 | 400 | 514 | 233.70 | 30.77 | 39.53 |
| British Columbia | 43 | 11,658 | 360 | 1,054 | 271.12 | 8.37 | 24.51 |

The number and percentage of wage-earners in month of highest employment working specified hours is shown in table 7(b) for Canada and the provinces. From this table it appears that the provinces in which the 8 hour day prevails were British Columbia, Saskatchewan and Manitoba, the 9 hour day in Prince Edward Island, Alberta, Ontario and Nova Scotia, the 10 hour day in Quebec whilst in New Brunswick it was over 10 hours per day.

7(b) Hours worked by wage-earners in month of Highest Employment, 1925.

| Provinces | Wage-earners In month of highest employment working per day of- | | | | Percentage of wage-earners working- | | | |
|----------------------|--|---------|----------|---------------|-------------------------------------|---------|----------|---------------|
| | 8 hours or less | 9 hours | 10 hours | over 10 hours | 8 hours or less | 9 hours | 10 hours | over 10 hours |
| | No. | No. | No. | No. | p.c. | p.c. | p.c. | p.c. |
| Canada | 2,315 | 5,529 | 2,927 | 683 | 23.55 | 45.25 | 24.48 | 5.72 |
| Prince Edward Island | - | 2 | - | - | - | 100.00 | - | - |
| Nova Scotia | 23 | 668 | 575 | 2 | 1.81 | 52.68 | 45.35 | .16 |
| New Brunswick | 10 | 254 | 145 | 310 | 1.39 | 35.33 | 20.17 | 43.11 |
| Quebec | 429 | 953 | 1,244 | 219 | 15.08 | 33.49 | 43.73 | 7.70 |
| Ontario | 1,535 | 3,329 | 961 | 152 | 25.68 | 55.70 | 16.08 | 2.54 |
| Manitoba | 327 | 187 | - | - | 63.62 | 36.38 | - | - |
| Saskatchewan | 14 | 3 | - | - | 82.35 | 17.65 | - | - |
| Alberta | 49 | 110 | - | - | 30.82 | 69.18 | - | - |
| British Columbia | 428 | 23 | 2 | - | 94.48 | 5.08 | .44 | - |

The hours worked per day in month of highest employment and the standard working hours per week are shown by provinces in table 7a. It should be noted that the statistics relating to hours of labour in columns 1, 2 and 3 are based on figures compiled for the month of highest employment whilst those in columns 4 and 5 represent the total standard weekly hours of labour for the number of establishments reporting to the Bureau. On this account and because of a considerable number of the smaller craft and factory plants working less than 8 hours per day, the relationships between daily and weekly hours of labour is to some extent impaired. The average daily hours of labour computed on the above basis was 9.10 for the Dominion 8.16 whilst the average weekly hours worked out at 49.44 per plant.

Table 7a.- Hours of Labour, per/and per week, 1925.

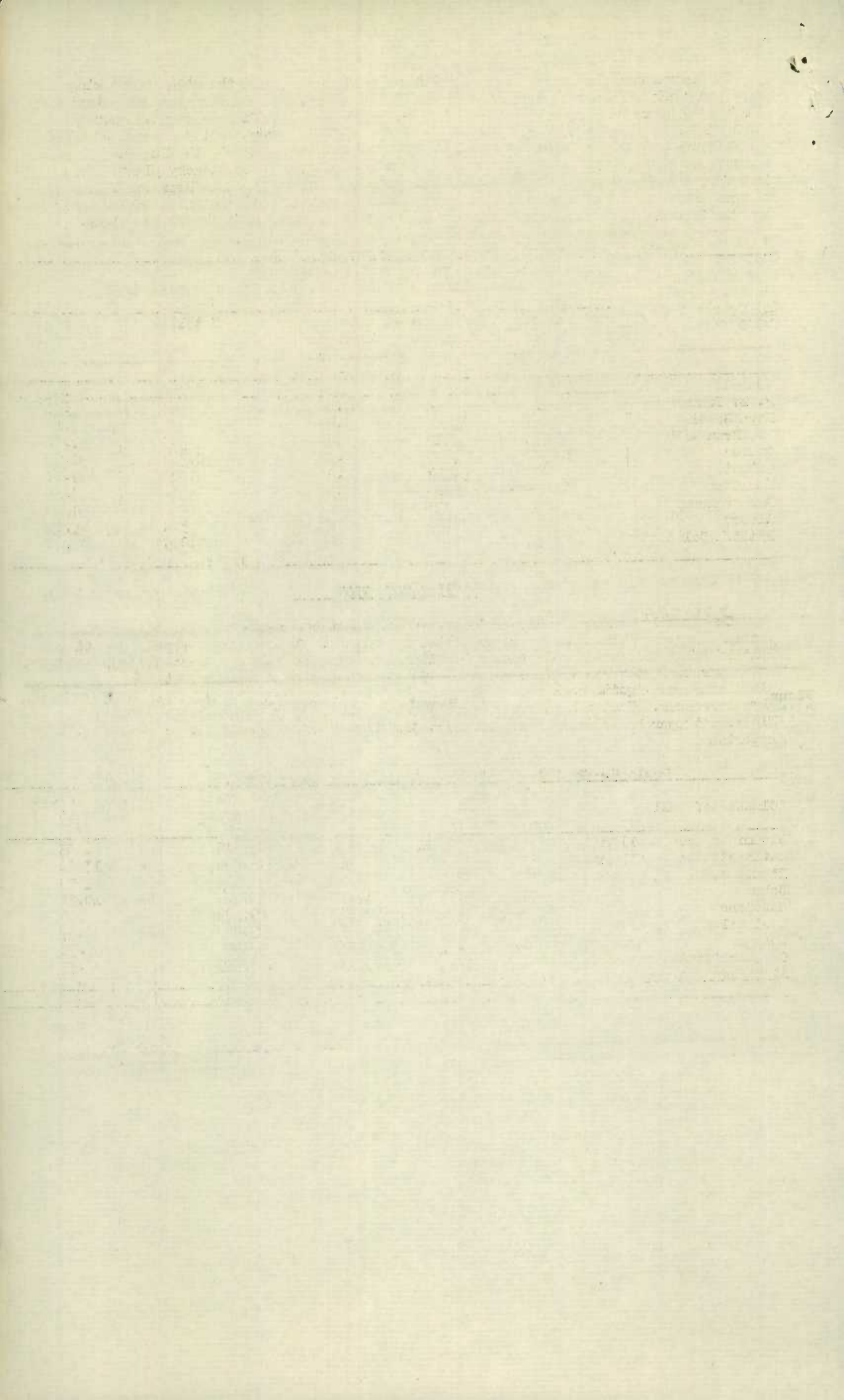
| Province | Total hours worked per day and number of wage earners in month of highest employment. | | | Standard working hours per week. | |
|------------------|---|--------------------|--|----------------------------------|---------|
| | Total hours | Total wage earners | Average hours per day per wage-earners | Total | Average |
| Canada | 108,722 | 11,954 | 9.10 | 15,822 | 49.44 |
| P. E. Island | 13 | 2 | 9.00 | 54 | 54.00 |
| Nova Scotia | 11,967 | 1,268 | 9.44 | 678 | 52.15 |
| New Brunswick | 7,071 | 719 | 9.86 | 553 | 50.27 |
| Quebec | 26,748 | 2,845 | 9.40 | 2,344 | 50.95 |
| Ontario | 53,447 | 5,977 | 8.94 | 8,406 | 49.74 |
| Manitoba | 4,299 | 514 | 8.36 | 916 | 48.21 |
| Saskatchewan | 139 | 17 | 8.18 | 250 | 50.00 |
| Alberta | 1,382 | 139 | 8.70 | 562 | 43.23 |
| British Columbia | 3,651 | 453 | 8.06 | 2,059 | 47.63 |

FUEL CONSUMPTION

The quantity and cost value delivered at the factory or works during 1925 of the various classes of fuel used, are presented in table 8. Coal and coke represented 71 per cent of the total cost of all fuel. Gasoline and fuel oils 8.68 per cent and gas, artificial and natural, 19 per cent. Compared with 1924 the average cost price per ton of bituminous and lignite coal show decreases while on the other hand anthracite coal and coke show increases. Fuel oils increased by 145,654 gallons and in value by \$11,317. Electricity purchased during the year cost \$202,108 or an average of 1.4 cents per k.w.h. reported.

Table 8.- Fuel Consumption in Canada by classes, 1925.

| Classes of fuel | Units of measure | Quantity | Cost value at factory or work \$ | Average cost per unit \$ |
|--------------------------------|------------------|----------|----------------------------------|--------------------------|
| Bituminous coal, all grades | tons of 2000 lb. | 59,357 | 269,515 | 5.85 |
| Anthracite coal, all grades | " " | 9,725 | 118,294 | 13.56 |
| Lignite coal, all grades | " " | 660 | 7,755 | 11.75 |
| Coke | " " | 1,248 | 13,174 | 10.56 |
| Gasoline | Imp. gals. | 69,970 | 20,129 | .29 |
| Fuel oils | " " | 416,168 | 29,352 | .07 |
| Wood | Cord | 797 | 5,406 | 6.78 |
| Gas, artificial and natural | 1000 cu. ft. | 145,592 | 109,735 | .75 |
| All other fuel (not specified) | - | - | 4,289 | - |
| | | | 577,259 | |



7
POWER INSTALLATION

The classes of power installed in the industry in 1925 are shown in table 9 by number of units installed and by horsepower according to manufacturer's rating. The horsepower used for manufacturing purposes is found by the addition of items 1, 2, 3 and 4a and totalled 17,436 h.p. of which 13,711 h.p. or 78.6 per cent was of electrical origin.

Table 9.- Power Installation, 1925.

| Classes of power | Number of units | Horsepower according to manufacturer's rating |
|--|-----------------|---|
| 1. Steam engines and turbines | 47 | 3,440 |
| 2. Oil, gas and gasoline engines | 8 | 35 |
| 3. Hydraulic turbines or water wheels | 3 | 252 |
| 4. Electric motors:- | | |
| (a) Operated by purchased power | 11,817 | 13,711 |
| (b) Operated by power generated by establishment | 115 | 902 |
| Total power for manufacturing purposes | 1,875 | 17,436 |
| Total electric motor installation | 1,932 | 14,613 |

COST OF MATERIALS USED.

The quantity and cost value at the factory or works of the various materials used in the biscuit and confectionery industry in 1925 is shown in table 10. The total cost of such materials for the year was \$23,227,967, a decrease of \$155,658 from 1924. The reduction in the cost of materials is due principally to the decrease in the market price of sugar which fell from an average price of 8.523 cents per lb. in 1924 to 6.25 cents per lb in 1925.

Table 10.- Materials used by quantity and cost value, 1925.

| Classes of materials | Unit of measure | Quantity | Cost value at factory \$ |
|----------------------------------|-----------------|------------|--------------------------|
| Flour | Barrels | 294,404 | 2,125,149 |
| Salt | " | 13,015 | 28,376 |
| Sugar | Pound | 64,271,273 | 4,182,664 |
| Butter | " | 1,373,459 | 467,250 |
| Cooking oils | " | 444,794 | 64,142 |
| Lard | " | 2,262,451 | 372,844 |
| Shortening | " | 5,457,109 | 827,474 |
| Cream | Gallon | 657,150 | 860,635 |
| Milk, fresh & skim | " | 929,164 | 220,231 |
| Milk, condensed | pound | 2,668,947 | 246,207 |
| Milk, powdered | " | 1,701,432 | 237,931 |
| Eggs | dozen | 499,544 | 147,809 |
| Fruits | pounds | 2,801,466 | 465,522 |
| Nuts | " | 6,052,254 | 1,104,466 |
| Glucose | " | 24,369,326 | 1,107,710 |
| Chocolate | " | 7,807,045 | 1,563,723 |
| Coconut | " | 1,674,332 | 256,234 |
| Cocoa beans | " | 4,172,140 | 574,020 |
| Cocoa Butter | " | 4,079,333 | 1,171,640 |
| All other materials (value only) | - | - | 4,592,444 |
| Containers of all kinds | - | - | 2,611,226 |
| Total cost of materials | | | 23,227,967 |

THE BISCUIT AND CONFECTIONERY INDUSTRY IN CANADA, 1925

IMPORTS AND EXPORTS

Table 11 presents the imports for consumption and the exports of Canadian produce for the calendar year 1925 by commodities and countries. Including imports of chicle the total value in 1924 of imports was \$1,305,408 while in 1925 the total value was \$1,623,684 being an increase during the year of \$318,276. The value of Canadian goods exported during the year 1925 was \$685,343 as against \$559,446 in 1924 or an increase of \$125,897. Of the total value of goods imported 51.3 per cent came from Britain and her colonies, whilst the percentage of Canadian produce exported to Britain and her colonies was approximately 80 per cent.

Table 11.- Imports and Exports of Biscuits, Confectionery, etc., during the calendar year 1925.

| I M P O R T S | | | E X P O R T S | | |
|--|------------------|------------------|---|------------------|----------------|
| Articles by countries | Quantity | Value | Articles by countries | Quantity | Value |
| | Lb. | \$ | | Cwt. | \$ |
| Biscuits, not sweetened | | | Biscuits and bread | | |
| United Kingdom | 756,415 | 73,177 | United States | 1,917 | 17,465 |
| United States | 659,908 | 81,890 | Br. Guiana | 1,612 | 17,990 |
| Other Countries | 37,615 | 5,656 | Br. Honduras | 247 | 4,077 |
| Totals | <u>1,453,938</u> | <u>160,723</u> | Bermuda | 511 | 6,805 |
| Biscuits, sweetened | | | Barbados | 286 | 5,213 |
| United Kingdom | 162,695 | 50,492 | Jamaica | 1,445 | 13,467 |
| United States | 946,093 | 118,248 | Other B.W. Indies | 1,598 | 22,331 |
| Other Countries | 40,939 | 7,475 | Other Countries | 584 | 11,537 |
| Totals | <u>1,149,727</u> | <u>176,215</u> | Totals | <u>8,200</u> | <u>98,885</u> |
| Confectionery, coated with or containing chocolate | | | Candy | Lb. | |
| United Kingdom | 184,378 | 87,538 | United Kingdom | 31,699 | 14,176 |
| United States | 92,484 | 25,140 | United States | 22,440 | 4,666 |
| Other Countries | 334,524 | 90,137 | Br. South Africa | 283,963 | 75,223 |
| Totals | <u>611,386</u> | <u>203,815</u> | Newfoundland | 426,768 | 149,418 |
| Sugar candy and confectionery of all kinds, n. o. p. | | | New Zealand | 494,883 | 161,866 |
| United Kingdom | 2,338,563 | 532,610 | Australia | 26,837 | 11,527 |
| United States | 954,476 | 127,527 | Bermuda | 18,354 | 5,627 |
| Other Countries | 211,597 | 38,273 | Other B.W. Indies | 50,639 | 16,282 |
| Totals | <u>3,504,636</u> | <u>698,410</u> | Other countries | 102,644 | 38,663 |
| Chicle or sappato gum, crude | | | Totals | <u>1,458,227</u> | <u>477,448</u> |
| United States | 681,320 | 295,430 | Confectionery, n. o. p. (value only) | | |
| British Honduras | 185,294 | 89,091 | United Kingdom | - | 21,932 |
| Totals | <u>866,614</u> | <u>384,521</u> | United States | - | 5,127 |
| Total imports by countries (value only) | | | Other Countries | - | 44,438 |
| United Kingdom | - | 743,217 | Totals | - | <u>71,497</u> |
| United States | - | 649,235 | Chewing gum (value only) | | |
| Br. Honduras | - | 89,091 | United Kingdom | - | 20,392 |
| Other Countries | - | 141,541 | Other Countries | - | 17,121 |
| Grand Total Imports | - | <u>1,623,684</u> | Totals | - | <u>37,513</u> |
| | | | Total Exports by Countries (value only) | | |
| | | | United Kingdom | - | 56,500 |
| | | | United States | - | 27,258 |
| | | | Br. S. Africa | - | 75,223 |
| | | | Newfoundland | - | 149,418 |
| | | | New Zealand | - | 161,866 |
| | | | Australia | - | 11,527 |
| | | | Br. Possessions | - | 22,067 |
| | | | Br. W. Indies | - | 69,725 |
| | | | Other Countries | - | 111,759 |
| | | | Grand Total Exports | - | <u>685,343</u> |



1010712136

Faint, illegible text at the top of the page, possibly a title or introductory paragraph.

TABLE

| Year | ... | ... | ... | ... |
|------|-----|-----|-----|-----|
| 1960 | ... | ... | ... | ... |
| 1961 | ... | ... | ... | ... |
| 1962 | ... | ... | ... | ... |
| 1963 | ... | ... | ... | ... |
| 1964 | ... | ... | ... | ... |
| 1965 | ... | ... | ... | ... |
| 1966 | ... | ... | ... | ... |
| 1967 | ... | ... | ... | ... |
| 1968 | ... | ... | ... | ... |
| 1969 | ... | ... | ... | ... |
| 1970 | ... | ... | ... | ... |
| 1971 | ... | ... | ... | ... |
| 1972 | ... | ... | ... | ... |
| 1973 | ... | ... | ... | ... |
| 1974 | ... | ... | ... | ... |
| 1975 | ... | ... | ... | ... |
| 1976 | ... | ... | ... | ... |
| 1977 | ... | ... | ... | ... |
| 1978 | ... | ... | ... | ... |
| 1979 | ... | ... | ... | ... |
| 1980 | ... | ... | ... | ... |
| 1981 | ... | ... | ... | ... |
| 1982 | ... | ... | ... | ... |
| 1983 | ... | ... | ... | ... |
| 1984 | ... | ... | ... | ... |
| 1985 | ... | ... | ... | ... |
| 1986 | ... | ... | ... | ... |
| 1987 | ... | ... | ... | ... |
| 1988 | ... | ... | ... | ... |
| 1989 | ... | ... | ... | ... |
| 1990 | ... | ... | ... | ... |
| 1991 | ... | ... | ... | ... |
| 1992 | ... | ... | ... | ... |
| 1993 | ... | ... | ... | ... |
| 1994 | ... | ... | ... | ... |
| 1995 | ... | ... | ... | ... |
| 1996 | ... | ... | ... | ... |
| 1997 | ... | ... | ... | ... |
| 1998 | ... | ... | ... | ... |
| 1999 | ... | ... | ... | ... |
| 2000 | ... | ... | ... | ... |
| 2001 | ... | ... | ... | ... |
| 2002 | ... | ... | ... | ... |
| 2003 | ... | ... | ... | ... |
| 2004 | ... | ... | ... | ... |
| 2005 | ... | ... | ... | ... |
| 2006 | ... | ... | ... | ... |
| 2007 | ... | ... | ... | ... |
| 2008 | ... | ... | ... | ... |
| 2009 | ... | ... | ... | ... |
| 2010 | ... | ... | ... | ... |
| 2011 | ... | ... | ... | ... |
| 2012 | ... | ... | ... | ... |
| 2013 | ... | ... | ... | ... |
| 2014 | ... | ... | ... | ... |
| 2015 | ... | ... | ... | ... |
| 2016 | ... | ... | ... | ... |
| 2017 | ... | ... | ... | ... |
| 2018 | ... | ... | ... | ... |
| 2019 | ... | ... | ... | ... |
| 2020 | ... | ... | ... | ... |
| 2021 | ... | ... | ... | ... |
| 2022 | ... | ... | ... | ... |