

32-202

NOT FOR LOAN
NE S'EMPRUNTE PAS

STATISTICS / STATISTIQUE
CANADA / CANADA
APR 6 2010
LIBRARY
BIBLIOTHÈQUE

CANADA
DEPARTMENT OF TRADE AND COMMERCE
DOMINION BUREAU OF STATISTICS
CENSUS OF INDUSTRY

REPORT
on the
BISCUIT & CONFECTIONERY INDUSTRY
in
CANADA
1926

+++

Published by authority of the Hon. James Malcolm, M. P.,
Minister of Trade and Commerce

+++

OTTAWA

1928

52-202

NOT FOR COPIES
BE REPRODUCED

STATISTICS
CANTON
1923
BUREAU OF
STATISTICS

NOTE.- The statistics published in the present statement include only the statistics of such manufacturing establishments as make Biscuits and confectionery as their principal products. The statistics relating to specific products are therefore not to be regarded as comprehensive, as products like, Biscuits and confectionery are also found as secondary products of the following industries:-

1. Bread and other bakery products
2. Cocoa and chocolate
3. Coffee and spices
4. Medicinal and pharmaceutical preparations

DEPARTMENT OF TRADE AND COMMERCE
DOMINION BUREAU OF STATISTICS
CENSUS OF INDUSTRY
OTTAWA-CANADA

Dominion Statistician: R.H. Coats, B.A., F.S.S. (Hon.), F.R.S.C.
Chief, Census of Industry: J.C. Macpherson.

THE BISCUIT AND CONFECTIONERY INDUSTRY IN CANADA, 1926

Ottawa, March, 1928.- A report on the Biscuit and Confectionery Industry in Canada is herewith presented for the calendar year 1926. The number of individual plants reported to the Bureau in 1926 totalled 315 being a decrease of 5 from the preceding year. The provinces of Nova Scotia, Quebec and Saskatchewan show increases in the number of operating plants, whilst the remaining provinces show decreases.

The distribution of plants by provinces for each of the years 1925 and 1926 was as follows:

Provinces	1925	1926
Prince Edward Island	1	2
Nova Scotia	13	14
New Brunswick	11	11
Quebec	46	48
Ontario	169	161
Manitoba	19	18
Saskatchewan	5	6
Alberta	13	12
British Columbia	43	43
Total, CANADA	320	315

Of the total factories reporting in 1926, the number making biscuits only was 18, biscuits and confectionery 20, ice cream only 33 and confectionery only 244. Statistics of the chewing gum industry are included in the confectionery section of this report.

Comparative Statistics

The principal statistics of the industry are compared by provinces in Table 1 for the calendar years 1925 and 1926. Increases appear in capital invested amounting to \$1,652,282 or 4.05 per cent, in the value of production of \$2,433,481 or 4.95 per cent and in the number of persons employed of 18. Increases are also shown in the amount paid for salaries and wages of \$242,780 or 2.30 per cent, in the cost of materials of \$416,288 or 1.76 per cent.

Table 1.- Principal Statistics compared by provinces 1925 and 1926.

	Estab- lish- ments	Capital employed	Employees	Salaries and wages	Cost of materials	Value of products
1925	No.	\$	No.	\$	\$	\$
CANADA	320	40,770,096	11,958	10,512,770	23,227,967	46,745,355
P. E. Island)						
Nova Scotia)	14	3,634,745	1,157	759,438	1,529,937	3,246,004
New Brunswick	11	2,020,451	693	535,936	1,403,439	2,560,171
Quebec	46	8,078,459	2,911	2,174,106	5,164,207	9,197,134
Ontario	169	23,688,367	6,067	5,899,026	12,597,770	26,383,977
Manitoba	19	1,130,864	483	472,036	1,056,263	2,301,894
Saskatchewan	5	84,040	18	17,180	32,779	54,248
Alberta	13	605,008	158	170,762	463,995	1,067,752
British Columbia	43	1,528,162	471	484,286	979,577	1,934,175
1926						
CANADA	315	42,422,378	11,976	10,755,550	23,644,255	49,178,836
P. E. Island	2	6,628	4	2,460	3,471	8,911
Nova Scotia	14	3,570,307	1,264	988,219	1,662,672	3,110,847
New Brunswick	11	2,271,931	669	509,528	1,474,529	2,474,799
Quebec	48	8,823,632	3,105	2,430,238	5,794,842	10,660,803
Ontario	161	24,645,729	5,734	5,622,227	12,071,190	27,298,584
Manitoba	18	1,286,668	531	506,459	1,147,643	2,377,661
Saskatchewan	6	79,422	12	14,130	17,666	40,005
Alberta	12	612,232	186	174,736	483,564	1,023,194
British Columbia	43	1,125,829	471	507,503	988,678	2,184,032

Faint, illegible text at the top of the page, possibly a header or introductory paragraph.

Second section of faint, illegible text, appearing as several lines of a list or report.

Third section of faint, illegible text, continuing the list or report.

Fourth section of faint, illegible text, possibly a concluding paragraph or signature area.

Faint, illegible text at the bottom of the page, possibly a footer or additional notes.

Size of Establishments

In view of the tendency towards concentration in industrial enterprises, a series of tables has been prepared presenting in a threefold way the size of establishments in the Biscuit and Confectionery industry measured by (a) capital investment, (b) gross value of production and (c) employment, all within certain specified groups or limitations for the calendar years 1925 and 1926. The tables further indicate the movement of capital, production and employment within the industry.

In 1925, the number of establishments reporting was 320 with a total capital investment of \$40,770,096, a total gross value of production of \$46,745,355 and a total employment of 11,983. Of the total number of establishments 35 had a capital investment of \$33,327,201 or 81.75 per cent of the total investment and an average investment of \$952,205 per establishment; 41 establishments had a gross value of production amounting to \$38,900,509 or 83.22 per cent of the total production and an average production of \$948,793 per establishment. In employment 29 establishments had 8,864 persons on their payroll or 74 per cent of the total number employed and an average employment of 306 per establishment.

In 1926, the number of establishments reporting was 315 with a total capital investment of \$42,422,378, a total gross value of production of \$49,178,836 and a total employment of 11,976. Of the total number of establishments 34 had a capital investment of \$34,817,156 or 82.07 per cent of the total investment with an average investment of \$1,024,034 per establishment. In gross value of production 46 establishments had a total production of \$42,137,643 or 85.68 per cent of the total for the industry and an average production of \$916,036 per establishment. In employment 27 establishments had a total payroll of 8,475 or 70.77 per cent of the total number employed and an average employment of 314 per establishment.

(a) Capital invested in establishments grouped according to value, 1925 and 1926.

Groups of value of capital	1925			1926		
	Estab- lish- ments	Capital invested	Average capital	Estab- lish- ments	Capital invested	Average Capital
		\$	\$		\$	\$
Under \$50,000	239	2,523,534	10,559	233	2,575,920	11,056
\$50,000 to under \$100,000	23	1,577,436	68,584	23	1,577,273	68,577
\$100,000 to under \$200,000	23	3,341,925	145,301	25	3,452,029	138,081
\$200,000 to under \$500,000	17	5,688,372	334,610	16	5,384,153	336,510
\$500,000 to under \$1,000,000	7	4,285,632	612,233	8	5,441,539	680,192
\$1,000,000 and over	11	23,353,197	2,123,198	10	23,991,464	2,399,146
Total	320	40,770,096	127,406	315	42,422,378	134,674

(b) Gross value of production in establishments grouped according to value, 1925 and 1926.

Groups of value of production	1925			1926		
	Estab- lish- ments	Gross Value of Production	Average Value of Produc.	Estab- lish- ments	Gross Value of Production	Average Value of Produc.
		\$	\$		\$	\$
Under \$50,000	232	2,709,373	11,678	226	2,519,800	11,150
\$50,000 to under \$100,000	25	1,835,965	73,438	24	1,764,367	73,016
\$100,000 to under \$200,000	22	3,299,508	159,069	19	2,757,026	145,107
\$200,000 to under \$500,000	18	5,712,695	317,372	21	6,568,285	312,775
\$500,000 to under \$1,000,000	11	7,790,158	708,196	12	7,998,069	666,506
\$1,000,000 and over	12	25,397,656	2,124,805	13	27,571,289	2,120,868
Total	320	46,745,355	146,079	315	49,178,836	156,123

(c) Employees in establishments grouped by number, 1925 and 1926

Groups of employees	1925			1926		
	Estab- lish- ments	Total Employees No.	Average Employees No.	Estab- lish- ments	Total Employees No.	Average Employees No.
Under 20 employees	240	928	4	234	908	4
20 to under 50 employees	33	973	29	32	935	29
50 to under 100 "	18	1,218	68	22	1,658	75
100 to under 200 "	14	1,989	142	13	1,904	146
200 to under 500 "	9	2,687	298	7	2,029	290
500 employees and over	6	4,188	698	7	4,542	649
Total	320	11,983	37	315	11,976	38

Table of Contents

Table of Contents

Chapter I. Introduction

Chapter II. Theoretical Foundations

Chapter III. Experimental Methods

Chapter IV. Results and Discussion

Chapter V. Conclusions

Appendix A. Data Tables

Appendix B. Mathematical Derivations

Appendix C. Bibliography

Appendix D. Index

Principal Statistics

Table 2 presents the principal statistics of the industry in the Dominion for the calendar years 1925 and 1926. A column showing the increase or decrease of each particular item by amount and approximate percentage is added to complete the table.

Table 2.- Principal Statistics Compared, 1925-1926.

Principal Statistics		1925	1926	(+/-) Increase or Decrease (-)	
				Amount	Per cent
Establishments reporting	No.	320	315	- 5	- 1.6
Capital invested	\$	40,170,095	42,422,378	+ 1,652,282	+ 4.05
Employees on salaries					
Male	No.	1,471	1,383	- 88	- 6.00
Female	No.	802	452	- 350	- 43.75
Total salaries	\$	3,461,430	3,466,128	+ 4,648	+ .13
Employees on wages					
Male	No.	4,585	4,473	- 112	- 2.44
Female	No.	5,600	5,668	+ 68	+ 1.20
Total wages	\$	7,051,290	7,289,422	+ 238,132	+ 3.38
Cost of fuel	\$	577,256	560,364	- 16,892	- 2.93
Cost of electricity	\$	202,108	182,932	- 19,176	- 9.49
Power employed - Units	No.	1,285	1,877	+ 592	+ 46.07
Capacity	H.P.	17,438	16,827	- 611	- 3.50
Cost of materials	\$	23,227,967	23,644,255	+ 416,288	+ 1.79
Gross value of products	\$	46,745,355	49,178,836	+ 2,433,481	+ 5.21
Net value of products	\$	23,517,383	25,534,581	+ 2,017,193	+ 8.58

Production Statistics 1926

The statistics of production in the biscuit and confectionery industry for the calendar year 1926 are presented by principal items in Table 3 for the Dominion and for each province separately. The quantity of biscuits manufactured rose from 38,323 tons in 1925 to 42,289 in 1926, whilst the value also rose from \$13,877,199 in 1925 to \$14,802,404 in 1926. The total production of confectionery rose from 97,696,203 pounds valued at \$25,278,522 in 1925 to 100,610,748 pounds valued at \$26,265,309 in 1926, an increase of 3 per cent in quantity and of 3.9 per cent in value. The average price per pound rose from 25.87 cents in 1925 to 26.10 cents in 1926, an increase of less than 1/10 per cent. Ice cream production in confectionery plants totalled 2,130,281 gallons worth \$3,035,486, in dairy plants to 4,709,641 gallons worth \$6,268,588 and in bakeries 57,888 gallons worth \$90,348. The total factory production of ice cream in Canada in 1926, was, therefore, 6,897,810 gallons of a selling value of \$9,394,422 or an average price of \$1.36 per gallon.

A summary table showing the total and per capita production and consumption of biscuits, confectionery and ice cream from all sources except that made in private homes, hotels, restaurants and boarding houses where it is made for own consumption, is presented below for the calendar years 1924, 1925 and 1926.

Per Capita production of biscuits, confectionery and ice cream for the calendar years 1924, 1925 and 1926.

Articles	1924		1925		1926		
	Quantity	Value \$	Quantity	Value \$	Quantity	Value \$	
Total production -							
Biscuits, plain, etc.	ton	36,533	13,352,659	38,572	13,988,175	42,527	14,909,828
Confectionery	lb.	95,949,432	26,037,739	103,799,327	27,083,076	105,297,615	27,646,451
Ice Cream	gal.	5,494,827	7,405,822	5,895,694	7,974,108	6,897,810	9,394,422
Per Capita Production							
Biscuits, plain, etc.	lb.	7.99	1.46	8.32	1.51	9.06	1.58
Confectionery	lb.	10.48	2.85	11.20	2.92	11.21	2.94
Ice cream	gal.	.60	.81	.63	.86	.72	1.00

Total and per capita consumption being production plus imports less exports, 1924, 1925, 1926.

Totals -							
Biscuits, plain, etc.	lb.	73,991,020	13,496,670	78,927,665	14,226,228	87,037,581	15,158,463
Confectionery	lb.	97,530,430	25,295,839	106,240,956	27,436,356	108,599,298	28,357,836
Ice cream	gal.	5,494,827	7,405,822	5,895,694	7,974,108	6,897,810	9,394,422
Per Capita Consumption							
Biscuits, plain, etc.	lb.	8.09	1.47	8.51	1.53	9.27	1.60
Confectionery	lb.	10.65	2.87	11.46	2.96	11.56	3.02
Ice cream	gal.	.60	.81	.63	.86	.72	1.00

Industries in the Territory
of Alaska, 1900

Industry	Value
Alaska	1,000,000
...	...
...	...
...	...
...	...

Summary

The total value of the industries in the Territory of Alaska in 1900 was \$1,000,000. This represents a significant increase from the previous year...

...

...

...

...

...

...

...

...

...

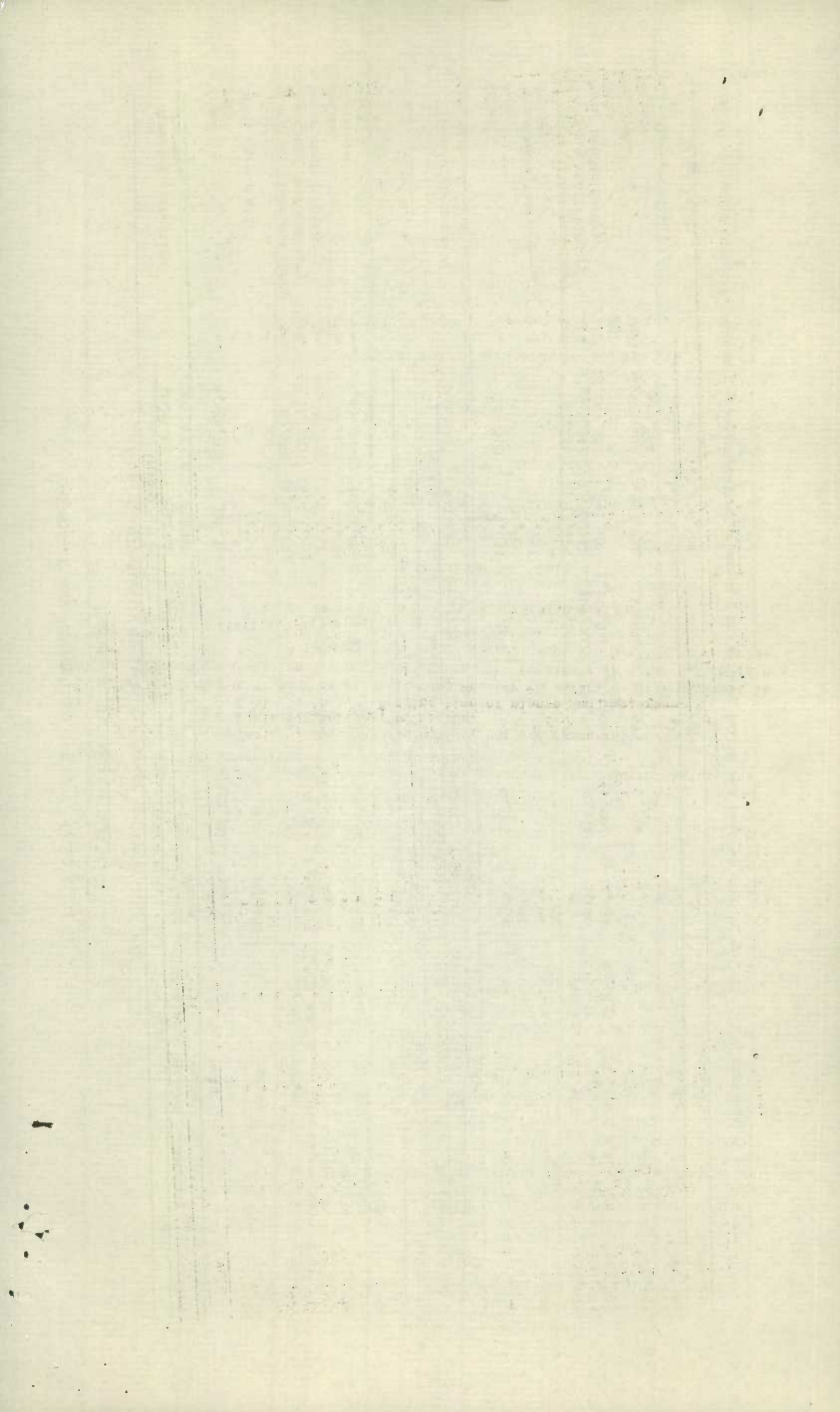
THE BISCUIT AND CONFECTIONERY INDUSTRY IN CANADA, 1926.

Production Statistics - Cont'd.

Table 3.- Production by items for Canada and Provinces, 1926

Items of production		CANADA		P.E. Island		Nova Scotia		New Brunswick		Quebec	
		Quantity	Selling Value	Quantity	Selling Value	Quantity	Selling Value	Quantity	Selling Value	Quantity	Selling Value
Bread	lb.	4,526,708	328,964	-	-	4,352,748	315,330	-	-	-	-
Buns	-	-	76,125	-	-	-	-	-	-	-	625
Pies, cakes, etc.	-	-	664,269	-	-	-	168,488	-	46,250	-	129,480
Puddings	-	-	19,716	-	-	-	-	-	-	-	275
Biscuits, plain and fancy	ton	42,289	14,802,404	-	-	1,148	299,227	2,205	689,445	15,266	3,955,165
Chocolate confectionery	lb.	55,764,909	16,413,133	-	-	2,721,906	1,301,917	5,668,246	1,124,993	12,576,690	3,931,641
Sugar confectionery	lb.	44,845,839	9,852,176	15,553	2,602	4,231,469	783,085	2,996,705	552,179	10,781,427	2,308,605
Cocoa	lb.	46,234	15,794	-	-	-	-	-	-	46,234	15,794
Ice cream	gal.	2,130,281	3,035,486	3,780	5,859	134,652	220,681	7,405	10,932	13,823	19,296
Popcorn	-	420,114	116,393	-	-	-	-	-	-	800	96
All other products 1/	-	-	3,854,376	-	450	-	22,119	-	51,000	-	299,826
Total Value	-	-	49,178,836	-	8,911	-	3,110,847	-	2,474,799	-	10,660,303
Items of Production		Ontario		Manitoba		Saskatchewan		Alberta		British Columbia	
		Quantity	Selling Value	Quantity	Selling Value	Quantity	Selling Value	Quantity	Selling Value	Quantity	Selling Value
Bread	lb.	105,960	7,634	26,000	2,600	42,000	3,400	-	-	-	-
Buns	-	-	34,600	-	38,600	-	2,300	-	-	-	-
Pies, cakes, etc.	-	-	219,751	-	81,700	-	11,100	-	-	-	7,500
Puddings	-	-	19,016	-	225	-	200	-	-	-	-
Biscuits, plain and fancy	ton	17,146	7,673,773	2,622	656,587	-	-	2,071	869,360	1,831	658,847
Chocolate confectionery	lb.	33,515,347	9,590,941	705,580	229,532	2,334	1,060	135,637	52,256	439,169	180,793
Sugar confectionery	lb.	18,263,186	4,291,106	5,349,086	1,216,024	60,802	14,494	463,833	100,376	2,683,778	583,705
Cocoa	lb.	-	-	-	-	-	-	-	-	-	-
Ice cream	gal.	1,409,105	1,953,891	118,840	151,993	2,744	6,351	-	-	439,932	666,483
Popcorn	-	415,564	115,577	-	-	-	-	-	-	3,750	720
All other products 1/	-	-	3,392,295	-	400	-	1,100	-	1,202	-	85,984
Total Value	-	-	27,298,584	-	2,377,661	-	40,005	-	1,023,194	-	2,184,032

1/ Includes macaroni, mincemeat, peanut butter, chewing gum, syrups, salted and roasted peanuts and chocolate coatings.



THE BISCUITS AND CONFECTIONERY INDUSTRY IN CANADA, 1926.

CAPITAL INVESTMENT

The amount of capital invested in the industry in 1926 is shown by provinces in table 4, under two heads: (1) fixed capital represented by land, buildings, machinery and tools and (2) working capital by stocks of materials and supplies on hand, finished products on hand, and cash, trading and operating accounts and bills receivable. All of the provinces but Nova Scotia, Saskatchewan and British Columbia show increases in total investment ranging from \$957,362 in Ontario to \$1,977 in Prince Edward Island, the total increase for the Dominion being \$1,652,282.

Table 4.- Capital Investment by Provinces, 1926.

Provinces	No. of plants reporting	Fixed Capital		Working Capital		Total Capital
		Land, buildings, fixtures, machinery & tools	Materials & supplies on hand, finished products, etc.	Cash trading & operating accts. etc.		
Canada	No. 315	\$ 27,016,666	\$ 6,770,258	\$ 8,635,454	\$ 42,422,378	
P. E. Island	2	5,000	705	923	6,628	
Nova Scotia	14	2,176,916	606,198	787,193	3,570,307	
New Brunswick	11	1,014,344	573,751	683,836	2,271,931	
Quebec	48	5,739,694	1,474,254	1,609,684	8,823,632	
Ontario	161	16,230,846	3,422,125	4,992,758	24,645,729	
Manitoba	18	729,362	312,092	245,214	1,286,668	
Saskatchewan	6	69,034	9,200	1,188	79,422	
Alberta	12	435,605	111,230	65,397	612,232	
Br. Columbia	43	615,865	260,703	249,261	1,125,829	

EMPLOYMENT STATISTICS

Statistics of employment in the biscuit and confectionery industry during the calendar year 1926 are presented in the following series of tables:-

Table 5. Employees by number, sex and remuneration.

Table 6. Employees by months.

Table 7. (a,b,c) Working time of plants and employees.

The total number of persons at employment whether on salary or wage payments is shown by sex and remuneration for the Dominion and the provinces in table 5. There was an increase in 1926 of 18 in the total number of persons employed whether on salaries or wages, whilst the annual payroll increased by \$242,780.

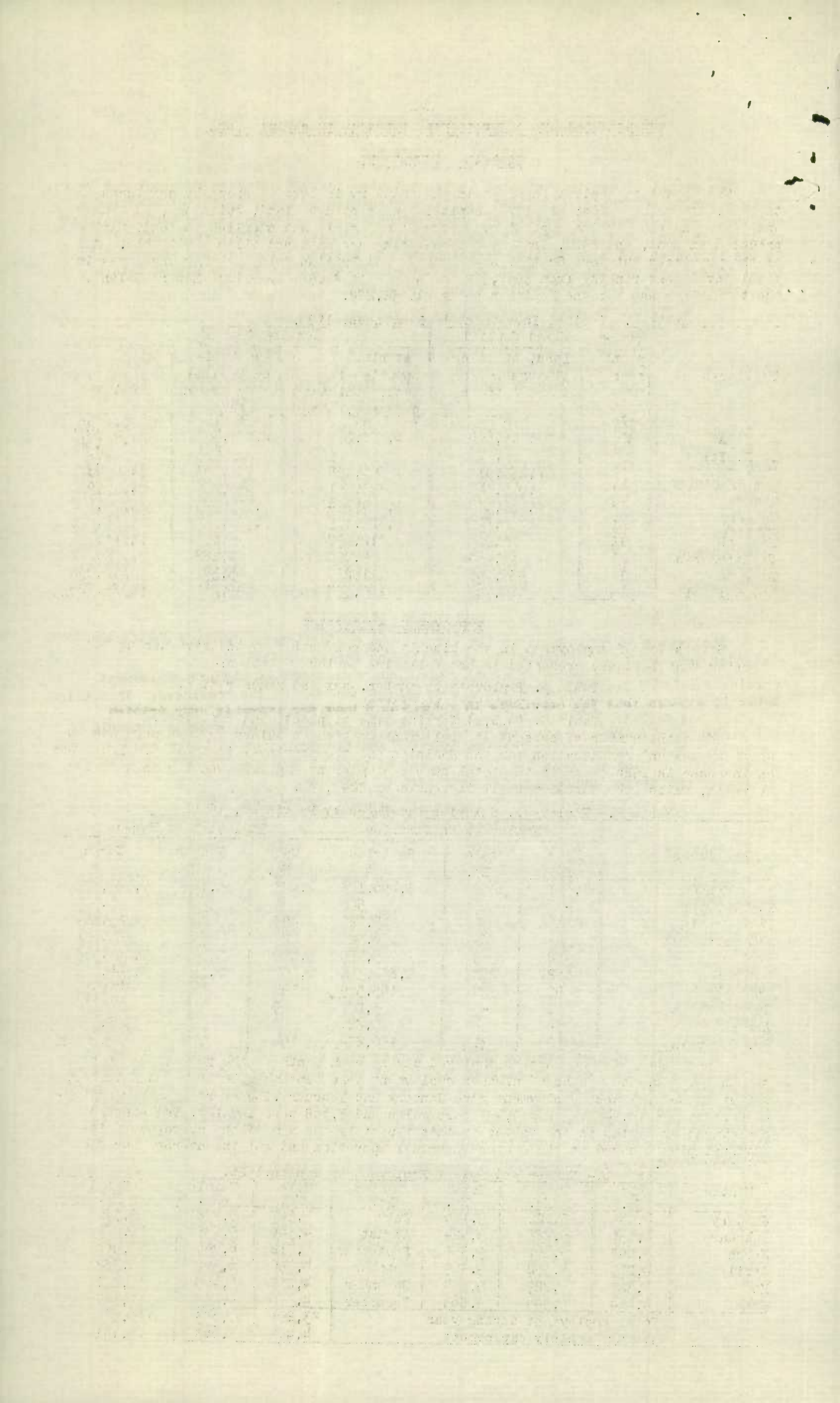
Table 5.- Employees, Salaries and Wages by Provinces, 1926.

Provinces	Employees on Salaries			Employees on Wages		
	Male	Female	Salaries	Male	Female	Wages
	No.	No.	\$	No.	No.	\$
Canada	1,383	452	3,466,128	4,473	5,668	7,289,422
P. E. Island	-	1	500	2	1	1,960
Nova Scotia	116	51	265,025	493	604	723,194
New Brunswick	57	24	156,620	224	364	352,908
Quebec	362	59	775,155	1,227	1,457	1,655,133
Ontario	642	272	1,877,349	2,057	2,763	3,744,878
Manitoba	90	20	165,979	197	224	340,480
Saskatchewan	2	-	3,800	9	1	10,330
Alberta	34	4	70,826	70	78	103,910
Br. Columbia	80	31	150,874	194	176	356,629

The number of wage earners employed during each month of the year is shown by sex in table 6. The months of highest employment were September, October and November, whilst those of lowest employment were January and February. The average number employed monthly was 10,141 of whom 4,473 were males and 5,668 were females. The average employment by months in the tables of this report is the sum of the averages of individual plants based on the months in actual operation and not the average for the calendar year.

Table 6.- Number and Sex of Employees by months, 1926.

Months	Male No.	Female No.	Total No.	Months	Male No.	Female No.	Total No.
January	4,040	5,120	9,160	July	4,507	5,428	9,935
February	4,136	5,288	9,424	August	4,546	5,735	10,281
March	4,098	5,261	9,359	September	4,712	6,254	10,966
April	4,217	5,092	9,309	October	4,790	6,592	11,382
May	4,325	5,229	9,554	November	4,803	6,468	11,271
June	4,464	5,399	9,863	December	4,570	5,787	10,357
Total employment during year					53,208	67,653	120,861
Average monthly employment					4,473	5,668	10,141



Working time of plants and employees is presented in tables 7(a), 7(b) and 7(c) for the calendar year 1926 for the provinces and the Dominion. Full time operation of plants was 84.73 per cent of the total possible working time estimated by the Census of Industry at 304 days, part time 7.19 per cent while idle hours represented 8.08 per cent. In average full time operation Manitoba ranked first with 286 days per plant, New Brunswick being second with 264.55 days per plant and Nova Scotia third with 261.07 days. In part time operation Saskatchewan was highest with 100.66 days per plant, Alberta next with 38.34 days and British Columbia third with 34.86 days. Time lost through idleness was highest in Prince Edward Island with 50.0 days per plant followed in order by Alberta with 32.08 days, Quebec with 30.23 days and Nova Scotia with 29.50 days.

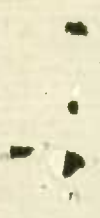
7(a) Working time of plants, 1926 by provinces.

Province	No. of Plants	Days in Operation			Average time worked per Plant		
		On full time	On part time	Idle	On full time	On part time	Idle
		No.	No.	No.	No.	No.	No.
Canada	315	81,136	6,883	7,741	257.57	21.85	24.58
Prince Edward Island	2	508	-	100	254.00	-	50.00
Nova Scotia	14	3,655	188	413	261.07	13.43	29.50
New Brunswick	11	2,910	185	249	264.55	16.82	22.63
Quebec	48	12,274	867	1,451	255.71	18.06	30.23
Ontario	161	41,844	3,038	4,062	259.90	18.87	25.23
Manitoba	18	5,148	42	282	286.00	2.33	15.67
Saskatchewan	6	1,056	604	164	176.00	100.66	27.34
Alberta	12	2,803	460	385	233.58	38.34	32.08
British Columbia	43	10,938	1,499	635	254.37	34.86	14.77

The number and percentage of wage-earners in month of highest employment working specified hours is shown in table 7(b) for Canada and the provinces. From this table it appears that the provinces in which the 8 hour day prevails were British Columbia and Saskatchewan, the 9 hour day in Prince Edward Island, Alberta, Ontario and Manitoba, the 10 hour day in Quebec and New Brunswick.

7(b) Hours worked by wage-earners in month of Highest Employment, 1926.

Provinces	Number of Wage-earners in month of highest employment working per day of -				Percentage of wage-earners working -			
	8 hours or less	9 hours	10 hours	over 10 hours	8 hours or less	9 hours	10 hours	Over 10 hours
	Canada	2,896	4,975	2,959	1,170	24.13	41.46	24.66
Prince Edward Island	1	1	-	-	50.00	50.00	-	-
Nova Scotia	8	269	1,063	3	.60	20.03	79.15	.22
New Brunswick	13	425	1	298	2.42	57.28	.14	40.16
Quebec	322	1,347	1,439	156	9.37	41.27	44.03	4.73
Ontario	1,936	2,418	453	712	35.08	43.81	8.21	12.90
Manitoba	226	230	-	-	44.67	55.33	-	-
Saskatchewan	8	1	-	1	30.00	10.00	-	10.00
Alberta	44	126	3	-	25.43	72.83	1.74	-
British Columbia	333	103	-	-	75.51	24.49	-	-



The first part of the report is a general statement of the work done during the year. It is followed by a detailed account of the various projects and the results obtained. The report concludes with a summary of the work done and a list of the publications resulting therefrom.

The hours worked per day in month of highest employment and the standard working hours per week are shown by provinces in table 7c. It should be noted that the statistics relating to hours of labour in columns 1, 2 and 3 are based on figures compiled for the month of highest employment whilst those in columns 4 and 5 represent the total standard weekly hours of labour for the number of establishments reporting to the Bureau. On this account and because of a considerable number of the smaller Confectionery plants working less than 8 hours per day, the relationship between daily and weekly hours of labour is to some extent impaired. The average daily hours of labour computed on the above basis was for the Dominion 9.20 whilst the average weekly hours worked out at 50.78 per plant.

Table 7c.- Hours of Labour, per day and per week, 1926

Province	Total hours worked per day and number of wage earners in month of highest employment.			Standard working hours per week	
	Total hours	Total wage-earners	Average hours per day per wage-earners	Total	Average
Canada	110,403	12,000	9.20	15,995	50.78
P. E. Island	17	2	8.50	102	51.00
Nova Scotia	13,148	1,343	9.79	758	54.14
New Brunswick	7,257	742	9.78	560	50.91
Quebec	30,805	3,264	9.44	2,536	52.83
Ontario	49,612	5,519	9.00	8,142	50.57
Manitoba	4,328	506	8.55	900	50.00
Saskatchewan	84	10	8.40	309	51.50
Alberta	1,516	173	8.76	608	50.67
British Columbia	3,636	441	8.24	2,080	48.37

FUEL CONSUMPTION

The quantity and cost value delivered at the factory or works during 1926 of the various classes of fuel used, are presented in table 8. Coal and coke represented 70.55 per cent of the total cost of all fuel. Gasoline and fuel oils 8.66 per cent and gas, artificial and natural, 18.99 per cent. Compared with 1925 the average cost price of all classes of fuel except oils show decreased ranging from \$2.12 per ton for lignite coal to one cent per gallon for gasoline. Fuel oils decreased by 23,627 gallons but increased in value by \$1,921. Electricity purchased during the year cost \$182,932 or an average of 1.54 cents per k.w.h.

Table 8.- Fuel Consumption in Canada by Classes, 1925.

Classes of fuel	Units of Measure	Quantity	Cost value at factory or works \$	Average cost per unit \$
Bituminous coal, all grades	tons of 2000 lb.	39,248	257,374	6.56
Anthracite coal, all grades	" "	8,826	118,488	13.43
Lignite coal, all grades	" "	223	2,148	9.63
Coke	" "	1,673	17,309	10.35
Gasoline	Imp. gals.	59,008	16,673	.28
Fuel oils	" "	392,561	31,883	.081
Wood	Cord	1,109	7,115	6.41
Gas, artificial and natural	1000 cu. ft.	232,283	106,430	.46
All other fuel (not specified)	-	-	2,944	-
			560,364	-

The first section of the report is devoted to a general description of the work done during the year. It is followed by a detailed account of the various experiments conducted, and the results obtained. The report concludes with a summary of the work done, and a list of references.

Experiment	Temperature	Pressure	Volume	Weight
1	20	1.0	100	1.0
2	25	1.0	100	1.0
3	30	1.0	100	1.0
4	35	1.0	100	1.0
5	40	1.0	100	1.0
6	45	1.0	100	1.0
7	50	1.0	100	1.0
8	55	1.0	100	1.0
9	60	1.0	100	1.0
10	65	1.0	100	1.0

DISCUSSION

The results of the experiments show that the volume of the gas increases with temperature, and that the pressure remains constant. This is in accordance with the law of Charles, which states that the volume of a gas is directly proportional to its absolute temperature, provided the pressure remains constant.

Temperature	Volume	Pressure	Weight
20	100	1.0	1.0
25	112.5	1.0	1.0
30	125	1.0	1.0
35	137.5	1.0	1.0
40	150	1.0	1.0
45	162.5	1.0	1.0
50	175	1.0	1.0
55	187.5	1.0	1.0
60	200	1.0	1.0
65	212.5	1.0	1.0

POWER INSTALLATION

The classes of power installed in the industry in 1926 are shown in table 9 by number of units installed and by horsepower according to manufacturer's rating. The horsepower used for manufacturing purposes is found by the addition of items 1, 2, 3 and 4a and totalled 16,050 h.p. of which 12,591 h.p. or 78.4 per cent was of electrical origin.

Table 9.- Power Installation, 1926.

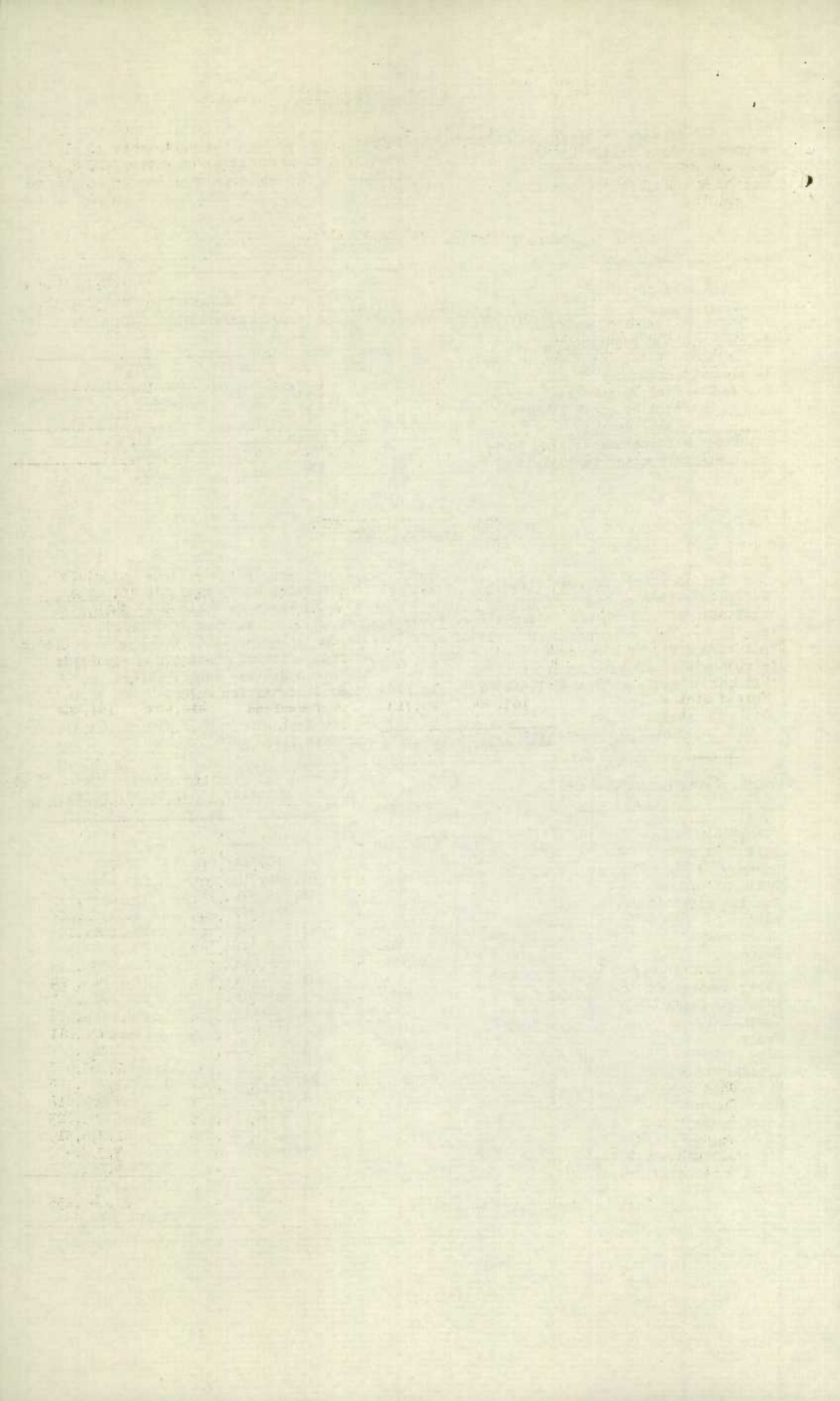
Classes of power	Number of Units	Horsepower according to manufacturer's rating
1. Steam engines and turbines	43	3,175
2. Oil, gas and gasoline engines	8	34
3. Hydraulic turbines or water wheels	2	250
4. Electric motors:-		
(a) Operated by purchased power	1,729	12,591
(b) Operated by power generated by establishment	95	777
Total power for manufacturing purposes	1,782	16,050
Total electric motor installation	1,824	13,368

COST OF MATERIALS USED.

The quantity and cost value at the factory or works of the various materials used in the biscuit and confectionery industry in 1926 is shown in table 10. The total cost of such materials for the year was \$23,644,255, an increase of \$416,288 from 1925. The increase in the cost of materials is due principally to the increase in the quantity of flour and of sugar used. The average price of these two commodities in 1925 was \$7.22 per barrel of flour, and 6.5 cents per pound for sugar, whilst in 1926 the prices were respectively \$6.56 for flour and 6.2 cents for sugar.

Table 10.- Materials used by quantity and cost value, 1926.

Classes of materials	Unit of Measure	Quantity	Cost value at the factory \$
Flour	Barrels	339,755	2,227,177
Salt	"	10,024	29,251
Sugar	Pound	67,901,714	4,189,247
Butter	"	1,342,791	479,034
Cooking oils	"	474,467	67,493
Lard	"	1,780,246	274,818
Shortening	"	6,060,397	906,166
Cream	Gallon	654,243	845,523
Milk, fresh & skim	"	1,166,308	235,574
Milk, condensed	Pound	3,283,748	306,069
Milk, powdered	"	1,654,361	232,191
Eggs	dozen	437,954	134,986
Fruits	pounds	3,007,975	496,611
Nuts	"	6,560,167	1,162,508
Glucose	"	25,461,040	1,067,467
Chocolate	"	8,063,727	1,706,779
Cocconut	"	1,390,038	229,012
Cocoa beans	"	4,155,526	598,023
Cocoa butter	"	4,561,870	1,296,819
All other materials (value only)	-	-	3,798,400
Containers of all kinds	-	-	3,361,107
Total cost of materials	-	-	23,644,255



THE BISCUIT AND CONFECTIONERY INDUSTRY IN CANADA, 1926

IMPORTS AND EXPORTS

Table 11 presents the imports for consumption and the exports of Canadian produce for the calendar year 1926 by commodities and countries. Including imports of chiclé the total value in 1925 of imports was \$1,623,624 while in 1926 the total value was \$2,273,071 being an increase during the year of \$649,367. The value of Canadian goods exported during the year 1926 was \$901,347 as against \$635,343 in 1925 or an increase of \$216,004. Of the total value of goods imported 62.6 per cent came from Britain and her colonies, whilst the percentage of Canadian produce exported to the same was approximately 80 per cent.

Table 11. - Imports and Exports of Biscuits, Confectionery, etc. during the calendar year 1926.

I M P O R T S			E X P O R T S		
Articles by countries	Quantity	Value	Articles by countries	Quantity	Value
		\$			\$
Biscuits, not sweetened	lb.		Biscuits & bread	cwt.	
United Kingdom	276,970	31,833	United States	1,104	10,667
United States	752,161	33,821	Br. Guiana	2,207	20,939
Other countries	41,684	6,360	Br. Honduras	309	4,420
Totals	<u>1,671,835</u>	<u>177,514</u>	Bermuda	470	6,248
			Barbados	396	6,396
Biscuits, sweetened	lb.		Jamaica	2,027	19,984
United Kingdom	161,944	52,359	Other B.W. Indies	1,407	20,910
United States	1,062,563	125,094	Other countries	1,579	25,026
Other countries	37,139	6,228	Totals	<u>9,489</u>	<u>115,590</u>
Totals	<u>1,261,646</u>	<u>136,711</u>			
Confectionery, coated with or containing chocolate	lb.		Candy	lb.	
United Kingdom	1,561,515	513,148	United Kingdom	15,705	6,737
United States	103,664	26,713	United States	17,774	6,399
Other countries	258,182	67,759	Br. South Africa	370,544	98,167
Totals	<u>1,923,361</u>	<u>609,620</u>	Newfoundland	422,653	141,562
			New Zealand	562,415	163,345
Sugar candy and confectionery of all kinds, n.o.p.	lb.		Australia	12,438	4,840
United Kingdom	2,313,410	505,028	Bermuda	34,148	9,839
United States	776,383	139,602	Other B.W. Indies	17,256	5,407
Other Countries	225,992	39,220	Other countries	154,320	62,644
Totals	<u>3,315,785</u>	<u>683,850</u>	Total	<u>1,607,283</u>	<u>499,490</u>
Chiclé or sorgho gum, crude	lb.		Confectionery, n.o.p. (value only)		
United States	593,817	343,923	United Kingdom	-	13,377
British Honduras	550,430	271,448	United States	-	1,028
Totals	<u>1,244,297</u>	<u>615,376</u>	Other Countries	-	63,190
			Totals	-	<u>82,595</u>
Total imports by countries (value only)			Chewing gum (value only)		
United Kingdom	-	1,152,398	United Kingdom	-	138,298
United States	-	729,153	Other countries	-	15,374
Br. Honduras	-	271,443	Totals	-	<u>203,672</u>
Other countries	-	120,067	Total Exports by countries (value only)		
Total Imports	-	<u>2,273,071</u>	United Kingdom	-	213,412
			United States	-	18,594
			Br. S. Africa	-	98,167
			Newfoundland	-	141,562
			New Zealand	-	163,345
			Australia	-	4,840
			Br. Possessions	-	67,876
			Br. W. Indies	-	26,317
			Other countries	-	167,224
			Grand Total	-	<u>901,347</u>

Firms Manufacturing Biscuits, Confectionery and Ice Cream, 1926.Prince Edward IslandNameAddress

A. Livingstone 162 Queen St., Charlottetown.
Thos. F. White 109 Grafton St., Charlottetown

Nova Scotia

Eastern Ice Cream Co. Ltd. 14 Townsend St., Sydney
J. E. Cann Hebron
Messrs. G. Deveau & F. Annis Box 922, Yarmouth
Halifax Creamery 257 Brunswick Ave., Halifax
G. I. Hamilton & Sons Commercial St., Pictou
J. M. Horton Box 827, Yarmouth
P. J. Lynch 164 Prince St., Sydney
Moirs Limited 128 Argyle St., Halifax
W. B. Murphy 935 Prince St., Truro
Geo. A. Morgan 500 Prince St., Truro
The Phillip Candy Co. B.F.Trask Hebron
Miss Vera Porter Yarmouth
Geo. H. Yeaton & Sons Ltd. Hantsport
Thos. P. DeWolfe Yarmouth

New Brunswick

Corona Company Ltd. 277 Union St., St. John
Mrs. L. M. Downing 99 Prince Edward St., St. John
Ganong Brothers Ltd. Water St., St. Stephen
W. H. Golden 374 Queen St., Fredericton
M. C. Mailhot Caraquet
Canada Biscuit Co. Ltd. Moncton
Marvon Plant Edmunston
A. Bezile & Fils
Peter Pappadakas
Olympia Confectionery Campbellton
T. Rankine & Sons Ltd. 10-14 Mill St., St. John
A. K. Currie Woodstock
Frank White 239 Wentworth St., St. John

Quebec

Acton Biscuit Co. Ltd. Acton Vale
Compagnie de Biscuit Aetna 1801 Avenue Delormier, Montreal
L. H. Belanger 209 rue Ash, Montreal
S. & I. Berman (Confectioners Ltd.) 2052 St. Lawrence Blvd. Montreal
Bonbons Candiac (Canada) Ltee. 128 rue St. Dominique, Quebec
Biscuiterie Jeanne d'Arc Ltee 1380 Gilford St., Montreal
Louis Boulais 7 rue Champlain, St. Jean
T. H. Boulanger en emrg. 126 - 2e1 rue (Limouilou) Quebec
Phileas Bussiere 7148 Boyer St., Montreal
Federal Confectionery
A. Cohen & L. Light 49 des Carrieres, Montreal
Confiserie Feuille d'Erable 1289 Maisonneuve, Montreal
Charbonneau Limitee 1800 Nicolet, Montreal
Antonic Cote 215 Commercial, La Tuque
David & Frere 1930 rue Champlain, Montreal
Viau Biscuits Corporation Ltd. 3401 Ontario est, Montreal
Robert Gibson & Sons (Canada) Ltd. 34 St. Gabriel St., Montreal
J. F. Gervais 553 Mont Royal Est., Montreal
J. N. Godin Ltd. 224-226 Notre Dame St., Three Rivers
A. F. Haddad 1963 Mt. Royal Ave. E., Montreal
Joliette Biscuit Co. Joliette
T. Labbe Emrg. 187 Notre Dame, Thetford Mines
Avila Lachapelle St. Esprit
Lalumiere & Frere 1227 St. Catharine E., Montreal
Wilfred Charest 160 rue Sauvageau, Quebec
Laura Secord Candy Shops
Plant - 507 Place Viger H. O. 60 Bathurst St., Toronto
Frs. Leclerc 163 rue Arago, Quebec
Walter M. Lowney 169 William St., Montreal
La Manufacture de Biscuits et Confiseries
de Scott Ltee. Scott Junction
L. Martineau Limitee 1691 rue Dorion, Montreal

Firms Manufacturing Biscuits, Confectionery & Ice Cream, 1926 - Cont'd.

Quebec - Cont'd.

<u>Name</u>	<u>Address</u>	
Elzeor Martell & Cie		Joliette
Masson & St. Germain	10 Ave. Morin,	Montreal
Canada Biscuit Co. Ltd.		
Montreal Biscuit Co. Plant	100 Brewster Ave.,	Montreal
O-Pee-Choc-Co. Ltd.	4856 St. Lawrence Blvd.,	Montreal
National Licorice Co. Ltd.	4211 Rouen St.,	Montreal
Page & Shaw (Canada Ltd.)	165 St. James St.,	Montreal
James Pascall (Canada) Ltd.	2025 Masson St.,	Montreal
G. W. Pichet	2572 Ontario Est.,	Montreal
J. Maniatis & J. Mechas		
Regina Candy Co.	6533 St. Lawrence Blvd.,	Montreal
Standard Confectionery Co.,	761 Notre Dame Est.,	Montreal
Sacharen Bros.	1023 Gadioux St.,	Montreal
Compagnie de Biscuit Stuart	171 Laurier Ouest,	Montreal
La Sucrierie Canadienne Ltee	108 - liere Ave.,	Limoilou, Quebec
Pepin & St. Germain	4058 Parthenais,	Montreal
Macjeb Thoun	789 St. Catharine St.,	Montreal
Viau Biscuit Corp. Ltee.	3401 Est Ontario,	Montreal
Delphis Verdun	230 rue St. Helene,	Quebec
R. J. Winfield, Reg'd.	124 St. John St.,	Quebec
The Gandy Gum Co. of Canada Ltd.	356 St. Antoine St.,	Montreal

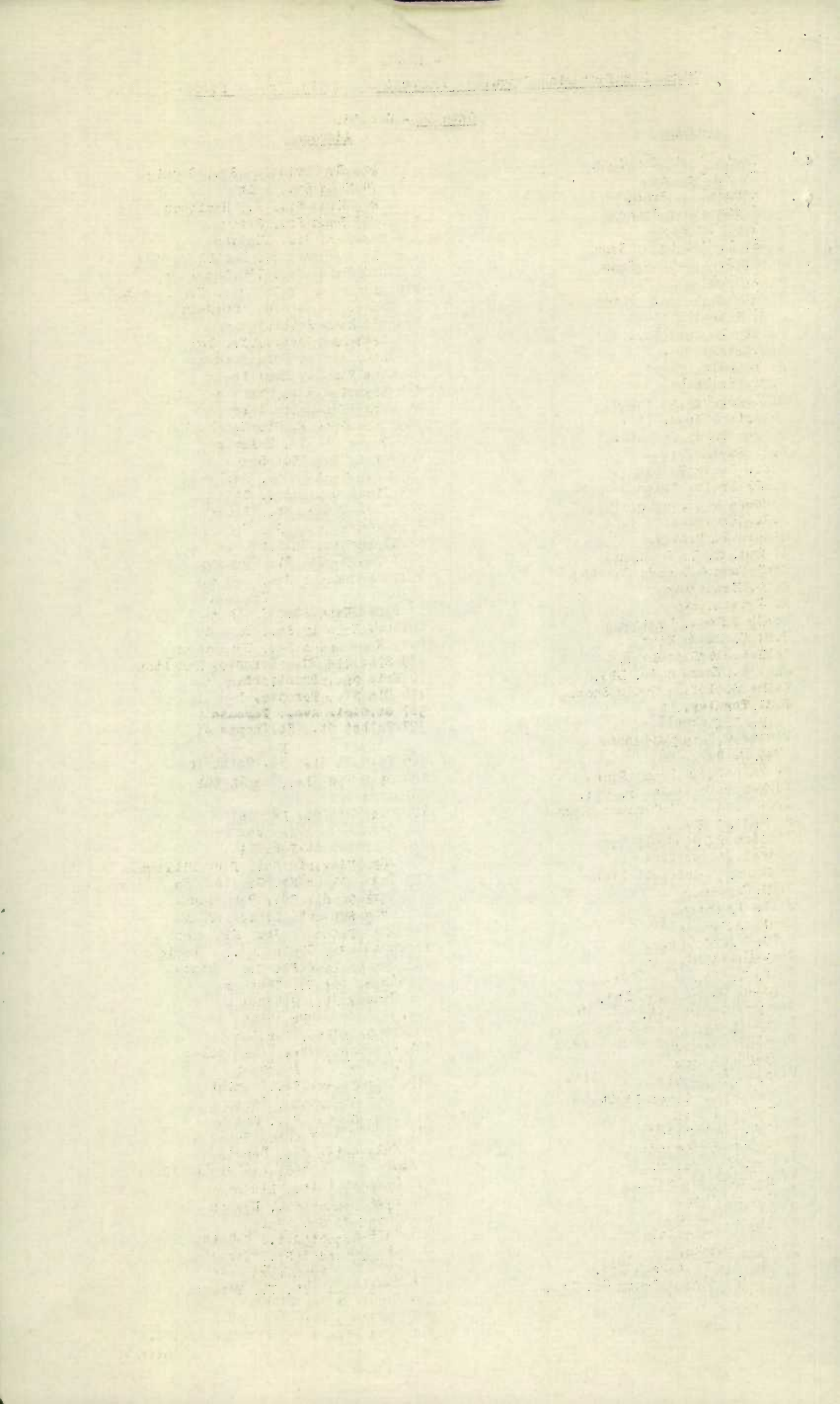
Ontario

W. R. Alchin	26 Simcoe St.,	Oshawa
Adolph B. Ames	53 Queen St., S.,	Kitchener
Chas. E. Armstrong	Pitt St.,	Cornwall
Artomis Sweets Ltd.	156 Colborne St.,	Brantford
Geo. Baker	164 King St., East,	Hamilton
H. B. Balmer	22 Geary Ave.,	Toronto
H. D. Beach		Iroquois
Bean & Westlake Ltd.	37 1/2 Dundas St.,	Woodstock
W. L. Beaton	1097 Wellington St.,	Ottawa
L. E. T. Berberick	329 King St., W.,	Kitchener
Betty Brown Candy Co. Ltd.	62 1/2 King St., W.,	Toronto
Richards Limited		Ingersoll
Bingham's Limited	146 Yonge St.,	Toronto
C. J. Bodley	99 Ontario St.,	Toronto
H. E. Boomer	181 Dundas St.,	London
Alexander Brace		Petrolia
Bunnell Bros.	294 Eissar St.,	Ottawa
Burgess Limited	92 Yonge St.,	Toronto
T. A. Burke	129 Mulberry St.,	Hamilton
Fred M. Cairns Co. Ltd.	535 Simcoe St.,	Niagara Falls
Candyland Company	116 Wyncham St.,	Guelph
Candy Specialties Ltd.	155-157 Catherine St.,	Hamilton
Wm. P. Georgas	72 King St.,	Chatham
Christie Brown & Co. Ltd.	202 King St., E.,	Toronto
Christophers Limited	5 King St., E.,	Hamilton
Edwin A. Clements		Arnrior
S. A. Coates		Collingwood
W. H. Cross	107 St. Catharine St., N.,	Hamilton
W. J. Crothers Co. Ltd.	209 Wellington St.,	Kingston
P. Lazarou	Esplanade St.,	Collingwood
W. D. Crump	146 King St.,	Chatham
Chas. A. Cunningham	56 Bay St.,	Kingston
Dainty Confections Ltd.	107 Atlantic Ave.,	Toronto
Hyman Danziger	123 Denison Ave.,	Toronto
George Danas	475 Dundas St.,	Woodstock
A. Denison	151 1/2 Dundas St.,	Toronto
Chas. Hopkins		
Devonshire Mfg. Co.	159 Mindall Ave.,	Toronto
J. Deemant		Hanover
Diana Sweets	33 Britain St.,	Toronto
E. F. Dickens & Son	215 Front St.,	Belleville
C. H. Doerr Co. Ltd.	123 West Weber St.,	Kitchener
Dunlop Candy Co.	1951 Dundas St. W.,	Toronto
The T. Eaton Co. Ltd.	190 Yonge St.,	Toronto
F. Enid	130 Queen St. E.,	Toronto
Huyler's	36 Sydenham St.,	Toronto
Imperial Biscuit Co.	Wilson St.,	Guelph

Firms Manufacturing Biscuits, Confectionery & Ice Cream, 1926 - Cont'd.

Ontario - Cont'd.

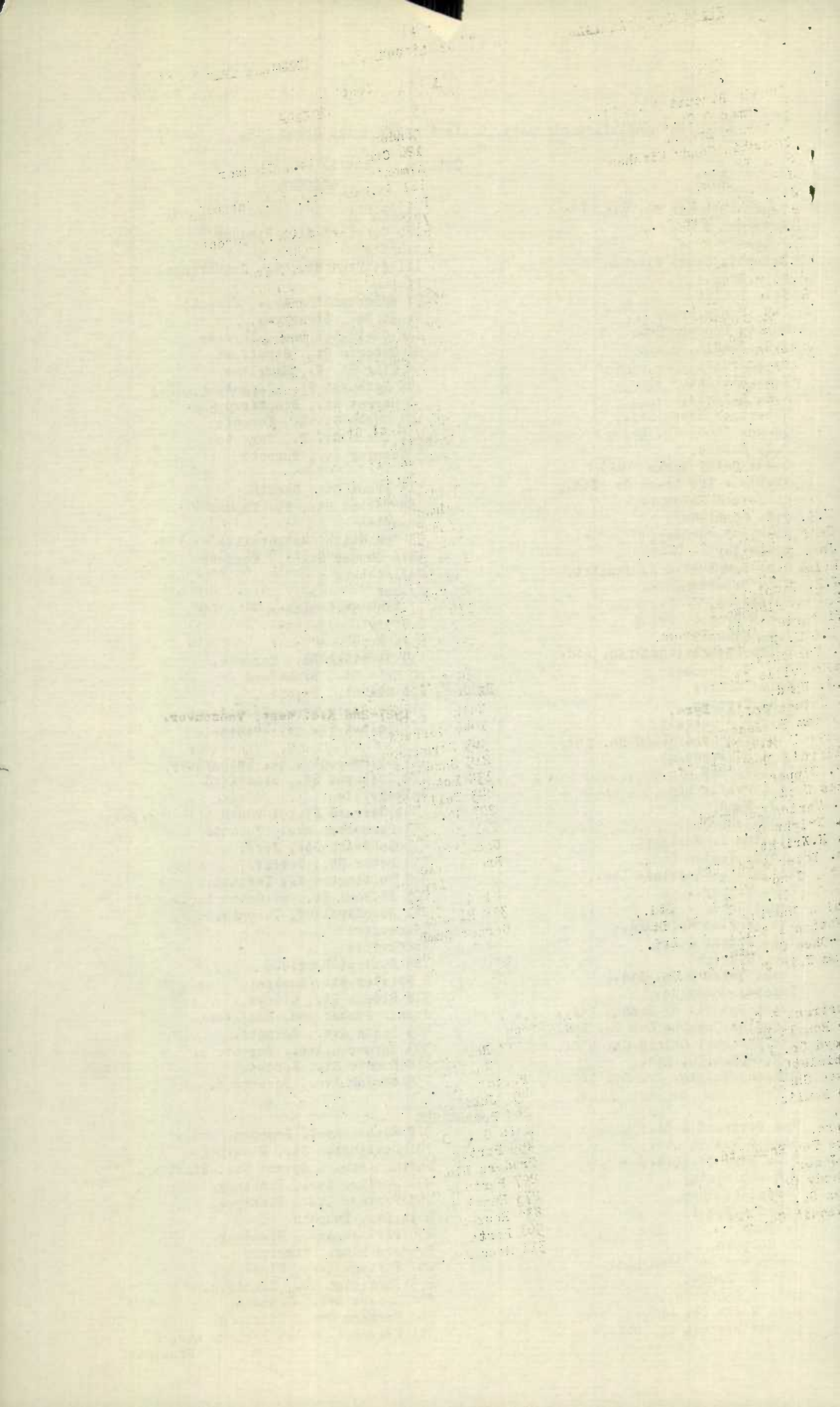
<u>Name</u>	<u>Address</u>
David Craig Jameison	106 S. Christina St., Sarnia
W. F. Jameson	74 Main St., Galt
Horncastle Bros.	209 King St., E., Hamilton
Christopher Janos	287 Bank St., Ottawa
Geo. Economy	Kenora
S. D. Eplett & Sons	Lake Shore Rd., New Liskeard
S. D. Eplett & Sons	77 Cedar St., Timmins
S. Evison	1750 St. Clair Ave., W., Toronto
S. Gallo & A. Gibbetts	Fort Frances
Michael Georgas	20 Kent St., Lindsay
G. H. Foster	1595 Dundas St. W., Toronto
Gettas Bros.	Tillsonburg
Geo. P. Gettas	44 Norfolk St., Simcoe
F. W. Gills	232 King St., W., Brockville
T. D. Grant Limited	107 Wyndham, Guelph
C. Grierson	313 Ottawa St. N., Hamilton
H. E. Haack	Elmira
George Heller	156 King St., Chatham
M. E. Hendershott	647 Barden St., Hamilton
J. E. Hodgson	190 Sparks St., Ottawa
Messrs. M. & H. Hook	2506 Yonge St., Toronto
A. E. Hunt	86 Pembroke St. W., Pembroke
Hunts Limited	62 Alcorn Ave., Toronto
Mrs. M. L. Johnson	559 Dundas St., Woodstock
Yeates & Thomas	27 Wyndham St., Guelph
G. Kammacher	Preston
James Karry	168 King St., Chatham
Korr Bros. Limited	54 Wolsely St., Toronto
Mrs. Edith King	377 Dundas St., Woodstock
Laing & Sons Ltd.,	169 King William St., Hamilton
Chas. Lauder Co. Ltd.	97 Ontario St., Toronto
Laura Secord Candy Shops	60 Bathurst St., Toronto
J. T. Legault	4 Bridge St., Belleville
F. F. Long	Campbellford
William E. Lyons	Newmarket
M. Lyriotakis	
Royal Candy Store	122 King St., Brockville
Canada Biscuit Co. Ltd.	
McCormick plant	Dundas St., London
D. M. McInnes	Kenora
Norman W. McLachlan	Petrolia
John Makris	600 Victoria St., Fort William
Thos. Manjuris	1306 Bloor St. W., Toronto
N. G. Donkas	331 George St., Peterboro
R. J. Watson	363 Sorauren Ave., Toronto
Geo. Masoud	238 Princess St., Kingston
W. R. Matheson	1386 St. Clair Ave., Toronto
Philip Matthews	2344 Bloor St. W., Toronto
J. X. Mays	216 King W., Chatham
Hamblin-Metcalf Ltd.	Weber St., Kitchener
Life Savers Ltd.	Prescott
Chas. Jentsch	Essex St., Toronto
Peter Moores	260 Front St., Belleville
James Maskos	Arnprior
J. M. Hoffatt	260 Ottawa St., Hamilton
William Neilson Limited	277 Gladstone, Toronto
Walter Nixon	118 Slater St., Ottawa
Mrs. W. Northey	Fenelon Falls
George Bakageorge	34 Dunlop St., Barrie
Jas. V. Laskarus	Carleton Place
Smorneos & Tozias	106 Kent St., Lindsay
Mandos Bros.	186 Dundas St., London
N. E. Palmer	61 Main St., Galt
Geroge Panaritis	9 Prospect Ave., Cobalt
Max Hanzakos	2861 Dundas St., Toronto
William Patterson Ltd.	Brantford
The Patterson Candy Co. Ltd.	951 Queen St. W., Toronto



Firms Manufacturing Biscuits, Confectionery & Ice Cream, 1926 - Cont'd.

Ontario - Cont'd.

<u>Name</u>	<u>Address</u>
Canada Biscuit Co. Ltd.,	London
Peterman & Co.,	126 Crawford St., Windsor
Peterson Bros.,	Almonte
Columbia Candy Kitchen,	111 St. Paul St., St. Catharines,
Pope Bros.,	Picton
John Poulas,	77 Roncesvalles Ave., Toronto
J.W. Prangley,	Front St., Strathroy,
Purity Popcorn Co.,	148 Ossington Ave., Toronto
H.G. Rankin,	81 Ontario St., Stratford
H. McArdle,	54 King St. W., Hamilton
W.S. Hazlitt,	362 Bathurst St., Toronto
A.K. Roberts,	50 Market St., Brantford
Robertson Bros. Ltd.,	103 Queen St. E., Toronto
Quaker Candy Co. Ltd.,	422 Queen St. E., Toronto
F.J. Sabine,	5 Fenning St., Toronto
Queen Candy Works	
St. Clair Ice Cream Co. Ltd.,	313 Front St., Sarnia.
Sanders & Holcombe,	389 Talbot St., St. Thomas
J.H. Schnieder,	Brampton
Minnie E. Sedley,	58 Wyandotte, Walkerville
A. Smiley,	3018 Dundas St. W., Toronto
Clay Campbell & J. Janetos,	Wallaceburg
H.L. Stratton,	Aylmer
R. Steven,	77 Bank St., Ottawa
Booth Bros.,	Sudbury
W.P. Tickell,	Port Hope
Telfer Biscuit Co. Ltd.,	139 Sterling Rd., Toronto.
Jno. W. Thomas,	70 Erie St., Brantford
Kalma Schiff,	176 Elm St., Toronto.
J.R. Townley,	517 St. Clair Ave., Toronto
Vair & Blackwell,	323 Talbot St., St. Thomas
Victoria Candy Kitchen,	
W. & N. Batcules,	165 St. Paul St., St. Catharines.
J. Valachos,	120 Colborne St., Brantford
Walkerville Ltd.,	Walkerville
J.J. Ward,	1046 Gerrard St., Toronto
R. Watson Co.,	363 Soraureen Ave., Toronto
William T. Westgate,	215 Sandwich St., Ford,
George Weston Ltd.,	134 Peter St., Toronto
Willard's Chocolate Ltd.,	443 Wellington W., Toronto.
D.P. Wipper,	207 St. Paul St., St. Catharines.
James Wood,	281 Roncesvalles, Toronto.
Mrs. Marion Woodward,	Cannington
H.B. Wright Co.,	Brockville
Geo. H. Wright,	185 Dunlop, Barrie.
Chas. Yates & Co. Ltd.,	8 Paisley St., Guelph.
Capital Candy Co.,	318 Rideau St., Ottawa.
Beech-Nut Co. of Canada Ltd.,	Corner Cumberland, Hamilton.
Canadian Chewing Gum Co. Ltd.,	405 Logan Ave., Toronto.
The National Chicle Co. Ltd.,	365 Sorauren Ave., Toronto 3.
O-Pee-Chee Co. Ltd.,	618 Dundas St., London.
William Wrigley Jr. Co. Ltd.,	235 Carlaw Ave., Toronto 8.
<u>Manitoba</u>	
Wm. Bertrand & Co.,	918 Rosser Ave., Brandon.
Bond & Ronald Ltd.,	701 Wellington St., Winnipeg.
W.J. Boyd Co. Ltd.,	Portage Ave. & Spence St., Winnipeg.
H.W. Chislett,	491 Jubilee Ave., Winnipeg.
Chocolate Shop,	268 Portage Ave., Winnipeg.
Brown & Boullis,	Main St., Dauphin.
J. Emma,	455 Portage Ave., Winnipeg.
L. Galpern,	Traders Bldg., Winnipeg,
Commodore Tea Room Ltd.,	297 Portage Ave., Winnipeg.
Geo. W. Jones,	273 Huntleigh St., Winnipeg.
Mitrou Candy Co.,	836 Rosser Ave., Brandon.
A.L. Moran Co. Ltd.,	561 Portage Ave., Winnipeg.
Canada Biscuit Co. Ltd.,	311 Rose Ave. & 143 Portage Ave. E., Winnipeg.



Firms Manufacturing Biscuits, Confectionery & Ice Cream, 1926 - Cont'd.

Manitoba - Cont'd

<u>Name</u>	<u>Address</u>
Picardy Candy Ltd.,	690 McGee St., Winnipeg.
Purity Ice Cream Co. Ltd.,	234 Pritchard Ave., Winnipeg.
Samuel Shore,	243 Jarvis Ave., Winnipeg.
P. Simonot,	254 Main St., Winnipeg.
Andrew Vlassie	124 Osborne St., Winnipeg.

Saskatchewan

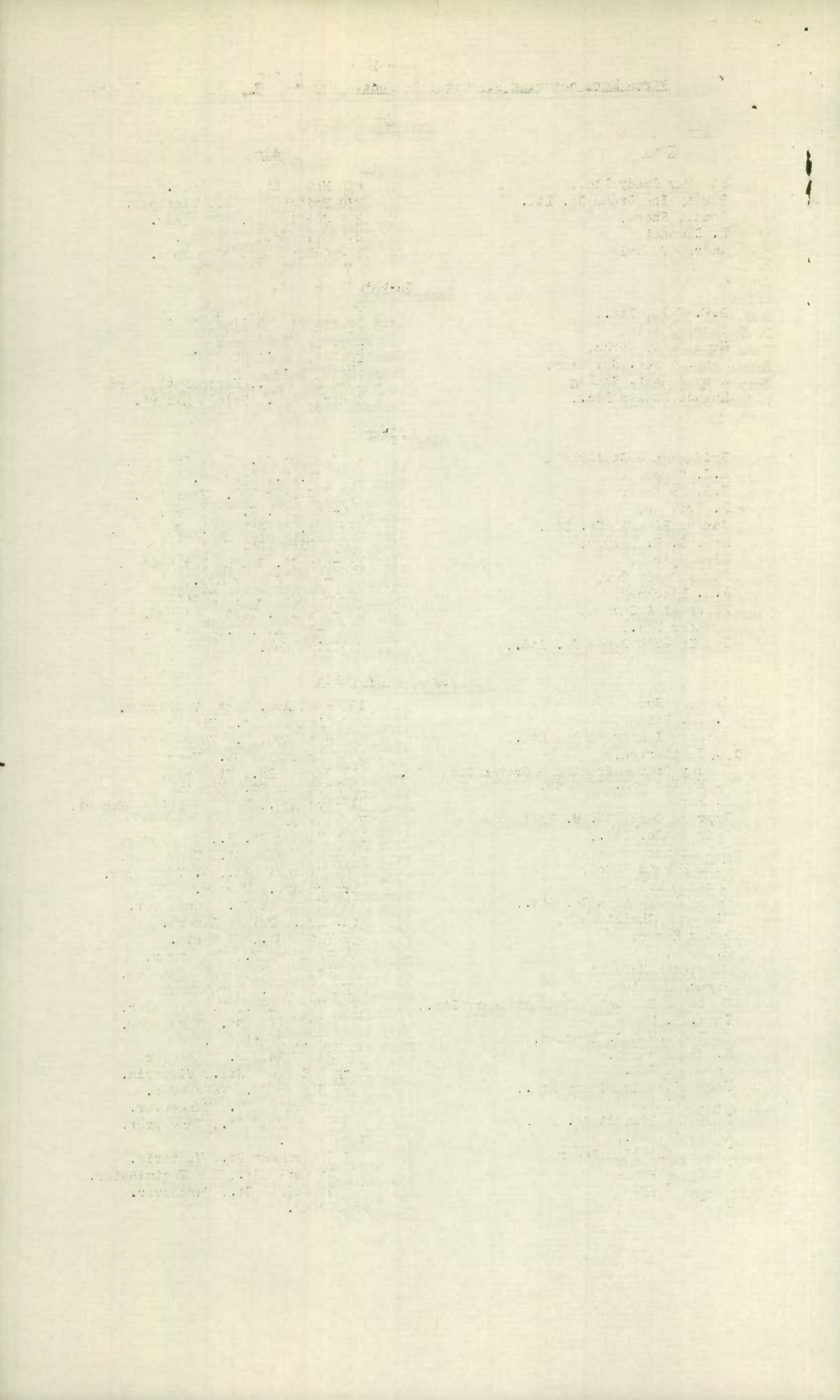
B.F. Fell, Ltd.,	1865 Scarth St., Regina.
Oscar Faille,	630 Broadway, Saskatoon
Home Candy Works,	Hamilton St., Regina.
Mena. & Leo. Shindler,	Third Ave., Kamsack.
Mary & Robt. Shabag,	1042 King St., North Battleford.
Palace Sweets Ltd.,	Central Ave., Prince Albert.

Alberta

Bridgeman & Stallworthy	1217 - 1st St., West Calgary.
A.J. Campbell,	14th St. W., Calgary.
W.R. Hartley,	10428 Jasper Ave., Edmonton.
P. Triffen,	140-8th Ave. E., Calgary.
Canada Biscuit Co. Ltd.,	83rd St. & 14th Ave., Edmonton.
Mrs. S. H. Oliver,	1005A First St. West, Calgary.
Nick Spirow,	333-5th St. South, Lethbridge.
Pavey Candy Co.,	9939-9945 Jasper Ave., Edmonton.
A.A. Pinckney,	10444 Whyte Ave., Edmonton.
Plunkett & Savage,	224-9th Ave. West, Calgary.
Rochons Ltd.,	122A -8th Ave. W., Calgary.
The Taberta Candy Co. Ltd.,	Medicine Hat.

British Columbia

Charles Eyre,	1927-2nd Ave. West, Vancouver.
F.J.H. Baines,	1409 Douglas St., Victoria
Barland Ice Cream Co. Ltd.,	1520-6th Ave. W., Vancouver
C.A. Chatterton,	3047 Granville St., Vancouver.
Hedley Craven Trading & Craven Candy Co.,	507 George Rd., Victoria.
F. Maffeo & M. Galasso,	24 Prideaux St., Nanaimo
E. Emad,	317-3rd Ave., Box 729 Prince Rupert.
Empress Candy Co., M. Tselentis,	Vancouver.
Leigh & Co. Ltd.,	1006 Pender St. E., Vancouver.
Bob Gionnone,	2343 Granville St., Vancouver.
W.H. Harris & Son,	5704 Victoria Rd., S. Vancouver.
Haros & Mellos,	Barnard Ave., Vernon.
Kelly Confection Co. Ltd.,	1106 Mainland St., Vancouver.
Killas & Christopher,	3rd. Ave., Prince Rupert.
Peter Karas,	652 Yates St., Victoria.
H. Lyle,	864 Broadway E., Vancouver.
Henrietta McKenzie,	33 Victoria Crescent, Nanaimo.
Horace Manning,	McKenzie Ave., Revelatone
National Biscuit & Confectionery Ltd.,	1706 First Ave., W. Vancouver.
Thos. S. Mayson,	1037 Granville St., Vancouver.
G. Drossos & S. Drossos,	Main St., Penticton.
E. Mickleburgh,	403 Joyce Rd., S. Vancouver.
Ormonds, Ltd.,	Mary & Russell Sts., Victoria.
Port C'Van Ice Cream Ltd.,	1170 Hornby St., Vancouver.
F.A. Keill,	675 Granville St., Vancouver.
Dominion Biscuit Co. Ltd.,	990-999 Powell St., Vancouver.
Rochon's Ltd.,	Saanichton.
Charles William Rogers,	913 Government St., Victoria.
George Pappas,	654 Columbia St., New Westminster.
Robert Sapp,	767 Granville St., Vancouver.
W. Sawyer,	Armstrong.

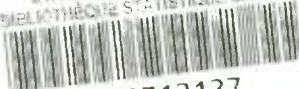


Firms Manufacturing Biscuits, Confectionery & Ice Cream, 1926 - Cont'd.

British Columbia

<u>Name</u>	<u>Address</u>
Sinclair Bros.,	310 Cordova St., Vancouver.
Garret Smith,	1237 Rudlin St., Victoria.
H. S. Stevenson,	725 Yates St., Victoria.
Mrs. K. Suzuki,	345 Powell St., Vancouver.
Wallace S. Terry,	P.O. Box 1200, Victoria
L.H. & S. E. Turner,	207 Kingsway, Vancouver.
L. Tsintilos,	610 Yates St., Victoria
J.C. Watkins,	716 Davie St., Vancouver,
Whites Ltd.,	Qualicum Beach.
Ernest Wiper,	726½ Yates St., Victoria.
A. Worsley,	Vancouver
Wanda Ziegler,	1472-12th Ave., W., Vancouver.

STATISTICS CANADA LIBRARY
BIBLIOTHÈQUE STATISTIQUE CANADA



1010712137

1010712137

1010712137

1010712137