

32-202

NOT FOR LOAN
NE S'EMPRUNTE PAS

STATISTICS STATISTIQUE
CANADA CANADA
PROPERTY OF THE
AUG 16 2010
LIBRARY
BIBLIOTHEQUE

CANADA

DEPARTMENT OF TRADE AND COMMERCE

DOMINION BUREAU OF STATISTICS

CENSUS OF INDUSTRY

REPORT

on the

BISCUIT, CONFECTIONERY, COCOA

and

CHOCOLATE INDUSTRIES

in

CANADA

1928

Published by Authority of the Hon. James Malcolm, M.P.,

Minister of Trade and Commerce

OTTAWA

1930

STATE LIBRARY
CALIFORNIA
1911-12
BIBLIOTHEQUE
LIBRARY

NOT FOR CIRCULATION
NE SEPARATEMENT PAS

32-202

NOTE.- The statistics published in the present statement include only the statistics of such manufacturing establishments as make Biscuits and confectionery as their principal product. Statistics relating to specific products are therefore not to be regarded as comprehensive, as products like, Biscuits and confectionery are also found as secondary products of the following industries:-

1. Bread and other bakery products
2. Coffee and spices
3. Medicinal and pharmaceutical preparations

DEPARTMENT OF TRADE AND COMMERCE
DOMINION BUREAU OF STATISTICS
CENSUS OF INDUSTRY
OTTAWA-CANADA

Dominion Statistician: R.H. Coats, B.A., F.S.S.(Hon.), F.R.S.C.
Chief, Census of Industry: J.C. Macpherson

THE BISCUIT, CONFECTIONERY, COCOA AND CHOCOLATE INDUSTRIES IN CANADA, 1928.

Ottawa, January, 1930.- A report on the Biscuit, Confectionery, Cocoa and Chocolate Industries in Canada is herewith presented for the calendar year 1928. The number of individual plants reported to the Bureau in 1928 totalled 283, being a decrease of 15 from the preceding year. The provinces of Prince Edward Island, New Brunswick, Manitoba and Saskatchewan remained stationary in the number of operating plants, whilst Ontario and Quebec show decreases, Ontario having a decrease of 17 and Nova Scotia and Quebec 2 each. Alberta and British Columbia alone show increases of 2 and 4 respectively.

The distribution of plants by provinces for each of the years 1927 and 1928 was as follows:

Provinces	1927	1928
Prince Edward Island	3	3
Nova Scotia	13	11
New Brunswick	8	8
Quebec	51	49
Ontario	146	129
Manitoba	19	19
Saskatchewan	5	5
Alberta	13	15
British Columbia	40	44
Total, CANADA	298	283

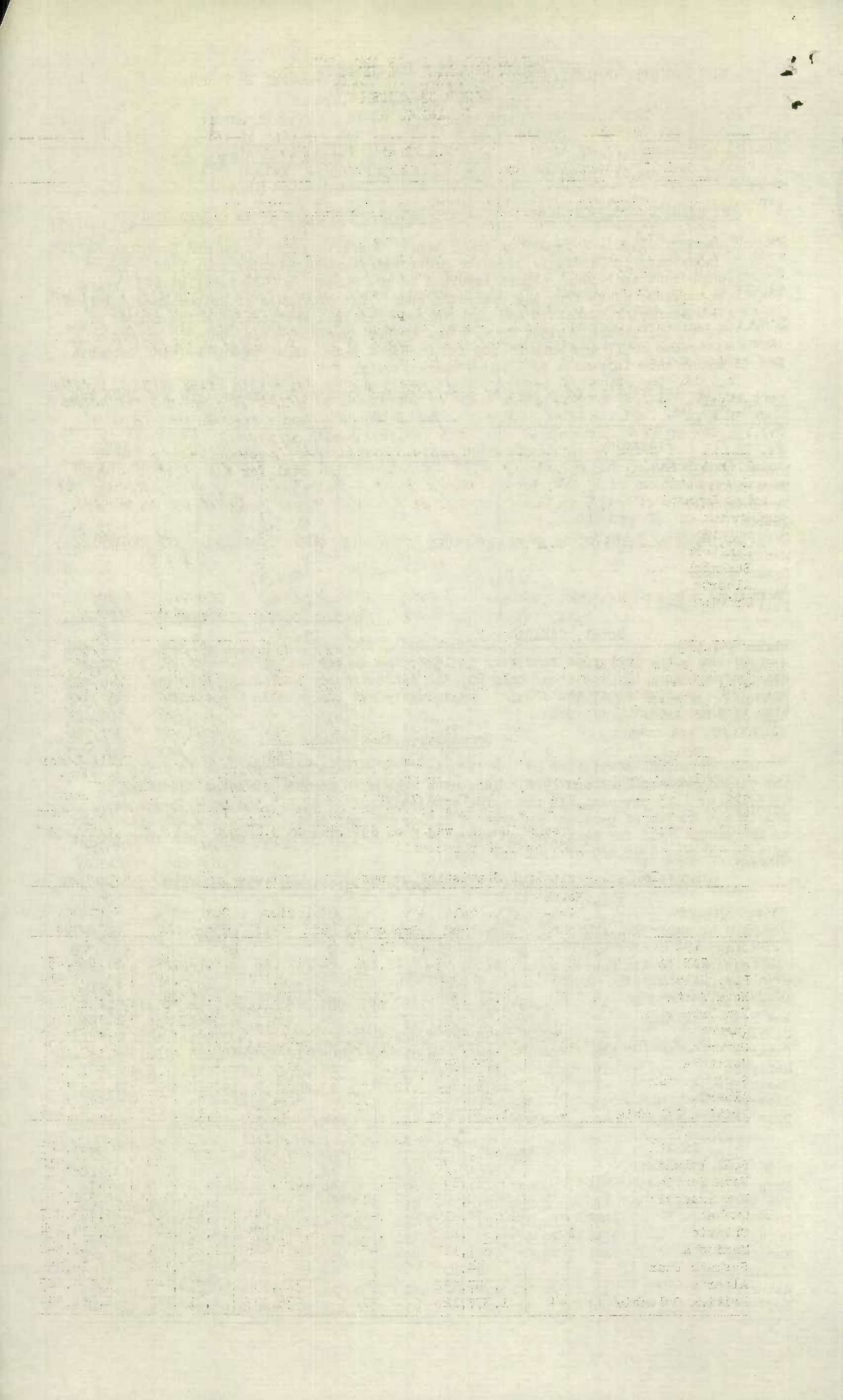
Of the total factories reporting in 1928, the number making ^{biscuits} only was 22, biscuits and confectionery 18, ice cream only 20, and confectionery including cocoa and chocolate only 223. Statistics of the chewing gum industry are included in the confectionery section of this report.

Comparative Statistics.

The principal statistics of the industry are compared by provinces in Table 1 for the calendar years 1927 and 1928. Increases appear in capital invested amounting to \$585,119 or 1.13 per cent, in the value of production of \$2,517,366 or 4.35 per cent and in the number of persons employed of 113 or .86 per cent. Increases are also shown in the amount paid for salaries and wages of \$374,443 or 3.08 per cent, and in the cost of materials of \$398,889 or 1.42 per cent.

Table 1.-Principal Statistics compared by provinces 1927 and 1928.

	Estab- lish- ments	Capital employed	Employees	Salaries and wages	Cost of materials	Value of products
	No.	\$	No.	\$	\$	\$
1927						
CANADA	298	51,767,963	13,161	12,160,186	28,081,341	57,886,857
P.E. Island	3	6,394	4	2,170	4,593	8,914
Nova Scotia	13	4,194,394	1,087	937,083	1,652,898	3,295,299
New Brunswick	8	2,269,655	672	524,214	1,302,769	2,531,796
Quebec	51	12,240,938	3,582	2,851,128	7,477,956	13,834,021
Ontario	146	29,134,999	6,618	6,705,713	14,666,054	32,329,136
Manitoba	19	1,741,397	452	399,632	1,299,017	2,402,521
Saskatchewan	5	75,633	12	13,826	19,912	37,188
Alberta	13	968,851	253	201,086	465,443	1,100,686
British Columbia	40	1,135,702	481	525,334	1,192,699	2,347,296
1928						
CANADA	283	52,353,082	13,274	12,534,629	28,480,230	60,404,223
P.E. Island	3	7,736	5	2,980	6,748	13,912
Nova Scotia	11	4,437,146	1,270	1,094,236	1,620,205	3,439,530
New Brunswick	8	2,209,423	714	558,815	1,500,368	2,901,756
Quebec	49	11,874,419	3,461	2,846,248	7,580,505	14,743,227
Ontario	129	29,657,262	6,510	6,713,379	14,555,946	33,219,234
Manitoba	19	1,687,117	474	467,726	1,237,561	2,348,842
Saskatchewan	5	44,995	5	3,360	7,195	16,150
Alberta	15	1,057,858	323	311,790	554,445	1,154,623
British Columbia	44	1,377,126	512	536,097	1,417,257	2,566,949



In view of the tendency towards concentration in industrial enterprises, a series of tables has been prepared presenting in a threefold way the size of establishments in the Biscuit and Confectionery industry measured by (a) capital investment, (b) gross value of production and (c) employment, all within certain specified groups or limitations for the calendar years 1927 and 1928. The tables further indicate the movement of capital, production and employment within the industry.

In 1927, the number of establishments reporting was 298 with a total capital investment of \$51,767,963, a total gross value of production of \$57,886,857 and a total employment of 13,161. Of the total number of establishments 44 had a capital investment of \$44,783,789 or 92.30 per cent of the total investment and an average investment of \$1,017,813 per establishment; 54 establishments had a gross value of production amounting to \$50,874,536 or 87.86 per cent of the total production and an average production of \$942,121 per establishment. In employment 35 establishments had 9,910 persons on their payroll or 75.3 per cent of the total number employed and an average employment of 283 per establishment.

In 1928, the number of establishments reporting was 283 with a total capital investment of \$52,353,082, a total gross value of production of \$60,404,223 and a total employment of 13,274. Of the total number of establishments 44 had a capital investment of \$47,152,206 or 90.06 per cent of the total investment with an average investment of \$1,071,641 per establishment. In gross value of production 53 establishments had a total production of \$53,259,189 or 88.17 per cent of the total for the industry and an average production of \$1,004,890 per establishment. In employment 33 establishments had a total payroll of 9,857 or 74.26 per cent of the total number employed and an average employment of 299 per establishment.

(a) Capital invested in establishments grouped according to value, 1927 and 1928.

Groups of value of capital	1927			1928		
	Estab-lish-ments	Capital invested	Average capital	Estab-lish-ments	Capital invested	Average capital
	No.	\$	\$	No.	\$	\$
Under \$50,000	213	2,602,777	12,219	203	895,687	4,412
\$50,000 to under \$100,000	20	1,365,062	68,253	13	937,606	72,123
\$100,000 to under \$200,000	21	3,016,335	143,635	23	3,367,583	146,417
\$200,000 to under \$500,000	20	6,105,382	305,269	21	6,874,806	327,372
\$500,000 to under \$1,000,000	11	8,287,580	753,416	9	6,845,592	760,621
\$1,000,000 and over	13	30,390,827	2,337,756	14	33,431,808	2,387,986
Total	298	51,767,963	173,718	283	52,353,082	184,993

(b) Gross value of production in establishments grouped according to value, 1927 and 1928.

Groups of value of production	1927			1928		
	Estab-lish-ments	Gross Value of Production	Average Value of Production	Estab-lish-ments	Gross Value of Production	Average Value of Production
	No.	\$	\$	No.	\$	\$
Under \$50,000	196	2,290,542	11,686	176	2,010,867	11,425
\$50,000 to under \$100,000	31	2,272,297	73,299	35	2,390,770	68,308
\$100,000 to under \$200,000	17	2,449,482	144,087	19	2,743,397	144,389
\$200,000 to under \$500,000	25	7,883,124	315,325	25	8,587,064	343,483
\$500,000 to under \$1,000,000	11	7,015,346	637,759	11	7,614,601	692,236
\$1,000,000 and over	18	35,976,066	1,998,670	17	37,057,524	2,179,838
Total	298	57,886,857	194,251	283	60,404,223	213,442

(c) Employees in establishments grouped by number, 1927 and 1928.

Groups of employees	1927			1928		
	Estab-lish-ments	Total Employees	Average Employees	Estab-lish-ments	Total Employees	Average Employees
	No.	No.	No.	No.	No.	No.
Under 20 employees	208	872	4.20	197	937	4.76
20 to under 50 employees	36	1,088	29.23	32	948	29.62
50 to under 100 employees	19	1,291	67.95	21	1,532	73.00
100 to under 200 employees	18	2,476	137.56	15	2,042	136.13
200 to under 500 employees	8	2,291	286.37	12	3,672	306.00
500 employees and over	9	5,143	571.44	6	4,143	690.50
Total	298	13,161	44.16	283	13,274	46.90

Principal Statistics.

Table 2 presents the principal statistics of the industry in the Dominion for the calendar years 1927 and 1928. A column showing the increase or decrease of each particular item by amount and approximate percentage is added to complete the table.

Table 2.- Principal Statistics Compared, 1927-1928.

Principal Statistics	1927	1928	(/) Increase or Decrease (-)			
			Amount	Per cent		
Establishments reporting No.	298	283	-	15	-	5.00
Capital invested \$	51,767,963	52,353,082	+	585,119	+	1.13
Employees on salaries-						
Male No.	1,682	1,810	+	128	+	7.61
Female No.	596	697	+	101	+	16.94
Total salaries \$	4,237,839	4,571,812	+	333,973	+	7.88
Employees on wages-						
Male No.	4,682	4,554	-	128	-	2.73
Female No.	6,201	6,213	+	12	+	.19
Total wages \$	7,922,347	7,962,817	+	40,470	+	.51
Cost of fuel \$	591,974	658,856	+	66,882	+	11.30
Cost of electricity \$	239,582	184,739	-	54,843	-	22.85
Power employed - Units No.	2,317	2,346	+	19	+	.82
Capacity H.P.	21,786	19,854	-	1,932	-	8.87
Cost of materials \$	28,081,341	28,480,230	+	398,889	+	1.42
Gross value of products \$	57,886,857	60,404,223	+	2,517,366	+	4.35
Net value of products \$	29,805,516	31,923,993	+	2,118,477	+	7.11

Production Statistics 1928.

The statistics of production in the biscuit, confectionery, cocoa and chocolate industries for the calendar year 1928 are presented by principal items in Table 3 for the Dominion and for each province separately. The quantity of biscuits manufactured fell from 50,473 tons in 1927 to 49,003 in 1928, whilst the value rose from \$16,338,476 in 1927 to \$17,391,482 in 1928. The total production of confectionery rose from 105,432,771 pounds valued at \$27,854,984 in 1927 to 117,757,077 pounds valued at \$30,921,398 in 1928, an increase of 11.7 per cent in quantity and of 11 per cent in value. The average price per pound fell from 26.26 cents in 1927 to 26 cents in 1928, a decrease of 1/6 of one per cent. Ice cream production in confectionery plants totalled 2,130,554 gallons worth \$2,978,723 in dairy plants to 6,353,077 gallons worth \$8,560,391 and in bakeries 32,031 gallons worth \$81,857. The total production of ice cream in Canada in 1928 was, therefore, 8,515,662 gallons of a selling value of \$11,620,971 or an average price of \$1.36 per gallon.

A summary table showing the total and per capita production and consumption of biscuits, confectionery and ice cream from all sources except that made in private homes, hotels, restaurants and boarding houses where it is made for own consumption, is presented below for the calendar years 1926, 1927 and 1928.

Per Capita production of biscuits, confectionery and ice cream for the calendar years 1926, 1927 and 1928.

Articles	1926		1927		1928	
	Quantity	Value \$	Quantity	Value \$	Quantity	Value \$
Total production-						
Biscuits, plain, etc. ton	42,527	14,909,828	50,813	16,465,732	49,380	17,531,019
Confectionery lb.	105,297,615	27,646,451	111,525,857	29,947,638	119,473,312	31,355,172
Ice Cream gal.	6,897,810	9,394,422	7,466,346	10,301,217	8,515,662	11,620,971
Per Capita Production						
Biscuits, plain etc. lb.	9.06	1.58	10.68	1.73	10.23	1.82
Confectionery lb.	11.21	2.94	11.72	3.15	12.37	3.25
Ice Cream gal.	.72	1.00	.78	1.08	.88	1.20

Total and per capita consumption being production plus imports less exports, 1926, 1927, 1928.

Totals -						
Biscuits, plain, etc. lb.	87,037,581	15,158,463	104,172,142	16,783,439	100,980,635	17,755,838
Confectionery lb.	108,599,298	28,357,836	114,606,036	30,476,078	122,131,246	31,699,063
Ice Cream gal.	6,897,810	9,394,422	7,466,346	10,301,217	8,515,662	11,620,971
Per Capita Consumption						
Biscuits, plain, etc. lb.	9.27	1.60	10.94	1.77	10.46	1.84
Confectionery lb.	11.56	3.02	12.04	3.20	12.64	3.28
Ice Cream gal.	.72	1.00	.78	1.08	.88	1.20

Experimental Observations

This experiment was conducted to determine the effect of temperature on the rate of reaction between hydrogen peroxide and potassium iodide. The reaction is exothermic and produces iodine and water. The rate of reaction was measured by the time taken for a fixed volume of iodine to be produced. The results are shown in the table below.

Date: _____

(A) _____

Temperature (°C)	Time taken for iodine to appear (s)
20	120
30	60
40	30
50	15

33

The results show that the rate of reaction increases as the temperature increases. This is because the molecules have more kinetic energy and are more likely to collide with sufficient energy to overcome the activation energy barrier. The rate of reaction is directly proportional to the temperature.

Temperature (°C)	Time taken for iodine to appear (s)
60	8
70	4
80	2

THE BISCUIT, CONFECTIONERY, COCOA AND CHOCOLATE INDUSTRIES IN CANADA, 1928.

Production Statistics - Cont'd.

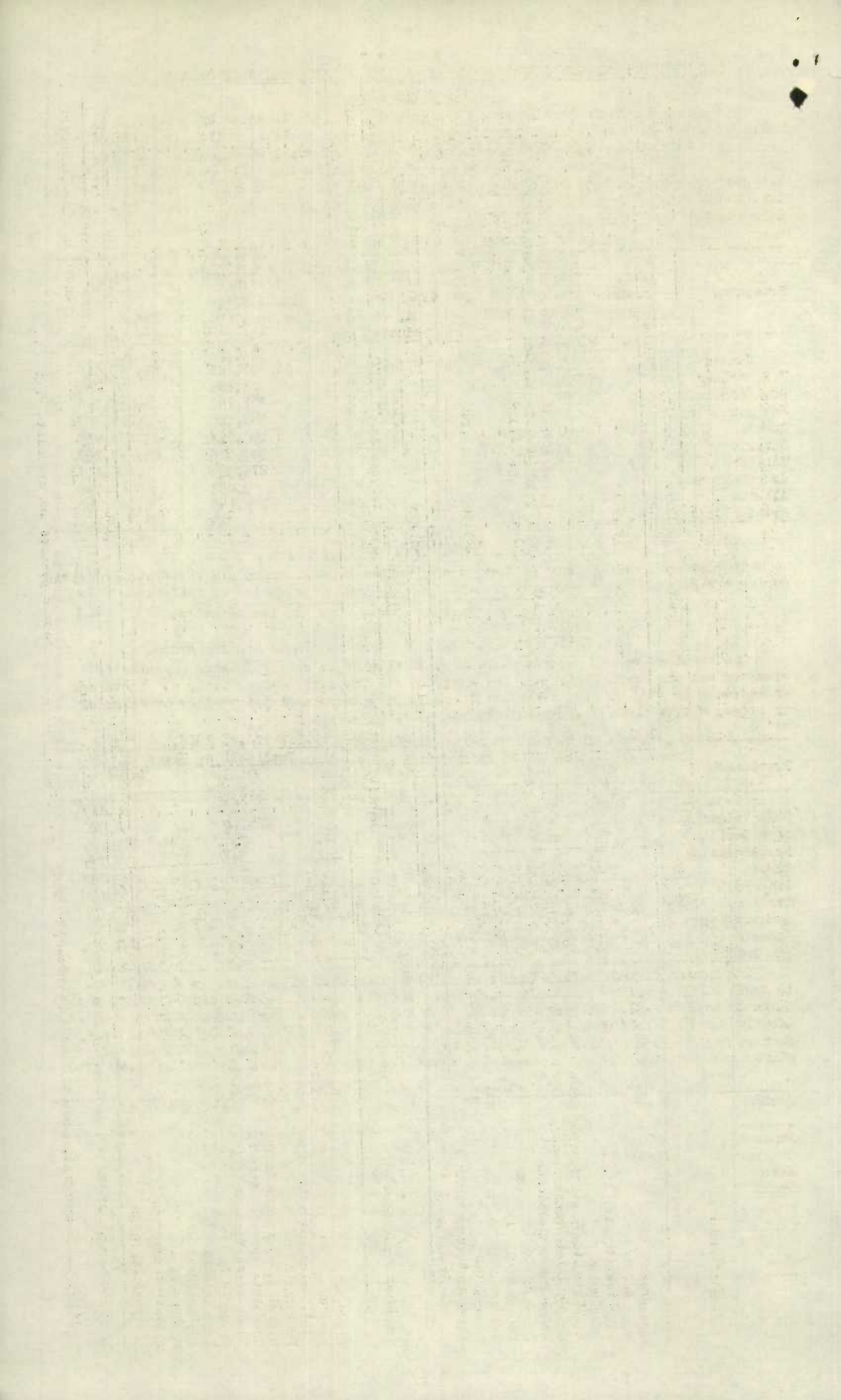
Table 3.- Production by Items for Canada and Provinces, 1928.

Items of Production	CANADA		P.E. ISLAND		NOVA SCOTIA		NEW BRUNSWICK		QUEBEC	
	Quantity	Selling Value	Quantity	Selling Value	Quantity	Selling Value	Quantity	Selling Value	Quantity	Selling Value
Bread 1/ lb.	4,885,076	356,687	-	-	4,592,376	330,571	-	-	-	-
Buns 1/ -	-	70,340	-	-	-	-	-	-	-	-
Pies, cakes, etc. 1/ -	-	814,348	-	-	-	163,081	-	56,874	-	258,000
Puddings -	-	25,421	-	-	-	-	-	3,329	-	-
Biscuits, plain and fancy 1/ ton	49,003	17,391,482	-	-	1,222	339,792	2,369	933,768	17,388	4,516,673
Chocolate confectionery 1/ lb.	66,716,949	20,077,457	8,469	5,469	2,846,138	1,391,856	6,145,589	1,319,518	17,586,684	5,035,669
Sugar confectionery 1/ lb.	51,040,128	10,843,941	16,540	3,880	4,109,558	910,908	2,781,354	571,591	12,394,499	2,329,531
Cocoa 1/ lb.	2,985,887	973,429	-	-	-	-	-	-	2,476,887	838,035
Chocolate 1/ lb.	4,258,003	1,081,453	-	-	-	-	-	-	3,807,503	996,152
Ice cream 1/ gal.	2,130,554	2,978,723	2,660	4,113	175,224	289,707	13,140	16,676	950	1,662
Popcorn 1/ lb.	4,768,740	1,192,718	-	-	-	-	-	-	325,395	82,706
All other products 2/ -	-	4,598,224	-	450	-	13,615	-	-	-	684,799
Total Value -	-	60,404,223	-	13,912	-	3,439,530	-	2,901,756	-	14,743,227

Items of Production	ONTARIO		MANITOBA		SASKATCHEWAN		ALBERTA		BRITISH COLUMBIA	
	Quantity	Selling Value	Quantity	Selling Value	Quantity	Selling Value	Quantity	Selling Value	Quantity	Selling Value
Bread 1/ lb.	92,700	6,116	200,000	20,000	-	-	-	-	-	-
Buns 1/ -	-	36,340	-	34,000	-	-	-	-	-	-
Pies, cakes, etc. 1/ -	-	195,893	-	140,500	-	-	-	-	-	-
Puddings 1/ -	-	21,942	-	150	-	-	-	-	-	-
Biscuits, plain and fancy 1/ ton	21,487	9,373,281	1,850	491,500	-	-	2,694	949,598	1,993	786,870
Chocolate confectionery 1/ lb.	34,853,094	11,053,659	4,132,200	897,255	6,730	2,776	184,641	61,980	953,404	309,275
Sugar confectionery 1/ lb.	24,775,707	5,505,325	3,050,324	578,513	16,300	4,570	691,923	141,720	3,203,923	797,903
Cocoa 1/ lb.	509,000	135,394	-	-	-	-	-	-	-	-
Chocolate 1/ lb.	450,500	85,301	-	-	-	-	-	-	-	-
Ice cream 1/ gal.	1,375,389	1,940,662	176,750	186,924	3,840	8,804	600	1,200	382,001	528,975
Popcorn 1/ -	4,430,715	1,107,808	-	-	-	-	500	125	12,130	2,079
All other products 2/ -	-	3,757,513	-	-	-	1	-	-	-	141,847
Total Value -	-	33,219,234	-	2,348,842	-	16,150	-	1,154,623	-	2,566,949

1/ Data here given do not necessarily represent the total Canadian production of these commodities since they are also produced in other industries.

2/ Includes macaroni, mincemeat, peanut butter, chewing gum, syrups, salted and roasted peanuts and chocolate coatings.



THE BISCUIT, CONFECTIONERY, COCOA AND CHOCOLATE INDUSTRIES IN CANADA, 1928.

CAPITAL INVESTMENT

The amount of capital invested in the industry in 1928 is shown by provinces in table 4, under two heads: (1) fixed capital represented by land, buildings, machinery and tools and (2) working capital by stocks, or materials and supplies on hand, finished products on hand, and cash, trading and operating accounts and bills receivable. All of the provinces but Quebec, New Brunswick, Manitoba and Saskatchewan show increases in total investment ranging from \$522,263 in Ontario to \$1,342 in Prince Edward Island, the total increase for the Dominion being \$585,119.

Table 4.- Capital Investment by Provinces, 1928.

Provinces	No. of plants reporting	Fixed Capital		Working Capital		Total Capital
		Land, buildings, fixtures, machinery & Tools	Materials & supplies on hand, finished products, etc.	Cash trading & operating accts. etc.		
	No.	\$	\$	\$	\$	\$
Canada	283	32,140,436	8,744,965	11,467,681		52,353,082
P.E. Island	3	5,187	650	1,899		7,736
Nova Scotia	11	2,780,285	795,701	861,160		4,437,146
New Brunswick	8	927,227	539,501	742,695		2,209,423
Quebec	49	7,463,067	2,221,136	2,190,216		11,874,419
Ontario	129	18,276,307	4,433,877	6,947,078		29,657,262
Manitoba	19	1,153,134	258,619	275,364		1,687,117
Saskatchewan	5	31,000	4,900	9,095		44,995
Alberta	15	733,419	205,294	119,145		1,057,858
British Columbia	44	770,810	285,287	321,029		1,377,126

EMPLOYMENT STATISTICS

Statistics of employment in the biscuit, confectionery, cocoa and chocolate industries during the calendar year 1928 are presented in the following series of tables:-

Table 5. Employees by number, sex and remuneration.

Table 6. Employees by months.

Table 7. (a,b,c) Working time of plants and employees.

The total number of persons at employment whether on salary or wage payments is shown by sex and remuneration for the Dominion and the provinces in table 5. There was an increase in 1928 of 113 in the total number of persons employed whether on salaries or wages, whilst the annual payroll increased by \$374,443.

Table 5.- Employees, Salaries and Wages by Provinces, 1928.

Provinces	Employees on Salaries			Employees on Wages		
	Male No.	Female No.	Salaries \$	Male No.	Female No.	Wages \$
Canada	1,810	697	4,571,812	4,554	6,213	7,962,817
P.E. Island	-	-	-	2	3	2,980
Nova Scotia	163	61	345,107	443	603	749,129
New Brunswick	71	39	189,679	228	376	369,134
Quebec	491	114	1,007,190	1,237	1,619	1,839,058
Ontario	868	390	2,575,181	2,175	3,077	4,138,198
Manitoba	50	19	120,220	194	211	347,506
Saskatchewan	-	-	-	5	-	3,360
Alberta	78	56	156,931	84	105	154,859
Br. Columbia	89	18	177,504	186	219	358,593

The number of wage earners employed during each month of the year is shown by sex in table 6. The months of highest employment were September, October and November, whilst those of lowest employment were January, February and April. The average number employed monthly was 10,767 of whom 4,554 were males and 6,213 were females. The average employment by months in the tables of this report is the sum of the averages of individual plants based on the months in actual operation and not the average for the calendar year.

Table 6.-Number and Sex of Employees by months, 1928.

Months	Male No.	Female No.	Total No.	Months	Male No.	Female No.	Total No.
January	4,250	5,528	9,778	July	4,598	5,969	10,567
February	4,354	5,733	10,087	August	4,599	6,279	10,878
March	4,336	5,818	10,154	September	4,774	6,929	11,703
April	4,363	5,643	10,006	October	4,864	7,240	12,104
May	4,375	5,863	10,238	November	4,850	7,082	11,932
June	4,518	5,921	10,439	December	4,690	6,557	11,247
Total employment during year					54,571	74,562	129,133
Average monthly employment					4,554	6,213	10,767

RECEIVED
JAN 15 1954
LIBRARY

Author	Title	Year	Volume	Page	Notes
...
...

...

...

...

Author	Title	Year	Volume	Page	Notes
...
...

...

...

...

Author	Title	Year	Volume	Page	Notes
...
...

Working time of plants and employees is presented in tables 7(a), 7(b) and 7(c) for the calendar year 1928 for the provinces and the Dominion. Full time operation of plants in the Dominion was 82.56 per cent of the total possible working time estimated by the Census of Industry at 304 days, part time 7.92 per cent while idle time represented 9.52 per cent. In average full time operation, New Brunswick ranked first with 290.13 days per plant, Quebec being second with 264.86 days per plant and Saskatchewan third with 262.40 days. In part time operation Prince Edward Island was highest with 83.33 days per plant, Alberta next with 61.60 days and Nova Scotia third with 37.09 days. Time lost through idleness was highest in Manitoba with 41.15 days per plant followed in order by Ontario with 33.89 days, Alberta with 30.60 days and British Columbia and Nova Scotia equal with 23.27 days.

7(a) Working time of plants, 1928 by provinces.

Provinces	Number of Plants	Days in Operation			Average time worked per plant		
		On full time	On part time	Idle	On full time	On part time	Idle
		No.	No.	No.	No.	No.	No.
Canada	283	71,024	6,817	3,191	250.97	24.09	28.94
Prince Edward Island	3	608	250	54	202.67	83.33	18.00
Nova Scotia	11	2,680	408	256	243.64	37.09	23.27
New Brunswick	8	2,321	53	58	290.13	6.62	7.25
Quebec	49	12,978	790	1,128	264.86	16.12	23.02
Ontario	129	32,066	2,778	4,372	248.57	21.54	33.89
Manitoba	19	4,403	591	782	231.74	31.11	41.15
Saskatchewan	5	1,312	150	58	262.40	30.00	11.60
Alberta	15	3,177	924	459	211.80	61.60	30.60
British Columbia	44	11,479	873	1,024	260.39	19.84	23.27

The number and percentage of wage-earners in month of highest employment working specified hours is shown in table 7(b) for Canada and the provinces. From this table it appears that the provinces in which the 8 hour day prevails were British Columbia, and Manitoba, the 9 hour day in Prince Edward Island, New Brunswick, Nova Scotia, Ontario, Saskatchewan and Alberta, the 10 hour day in Quebec, whilst New Brunswick showed nearly 45 per cent working over 10 hours per day.

7(b) Hours worked by wage-earners in month of Highest Employment, 1928.

Provinces	Number of Wage-earners in month of highest employment working per day of -				Percentage of wage-earners working -			
	8 hours or less	9 hours	10 hours	Over 10 hours	8 hours or less	9 hours	10 hours	Over 10 hours
Canada	3,050	6,507	2,776	715	23.31	49.87	21.28	5.48
Prince Edward Is.	-	5	-	-	-	100.00	-	-
Nova Scotia	13	755	452	109	.98	56.81	34.01	8.20
New Brunswick	-	427	-	349	-	55.03	-	44.97
Quebec	615	1,212	1,462	147	17.90	35.27	42.55	4.28
Ontario	1,641	3,685	856	109	26.09	58.58	13.60	1.73
Manitoba	285	215	-	-	57.00	43.00	-	-
Saskatchewan	1	4	-	-	20.00	80.00	-	-
Alberta	33	184	-	-	15.21	84.79	-	-
British Columbia	462	20	6	1	94.48	4.09	1.23	.20

London, 12th Dec 1944
Dear Mr. [Name]
I have your letter of the 10th and am glad to hear that you are well.
I am writing to you to say that I have received your letter of the 10th and am glad to hear that you are well.
I am writing to you to say that I have received your letter of the 10th and am glad to hear that you are well.
I am writing to you to say that I have received your letter of the 10th and am glad to hear that you are well.

[Header 1]	[Header 2]	[Header 3]	[Header 4]	[Header 5]
[Data 1.1]	[Data 1.2]	[Data 1.3]	[Data 1.4]	[Data 1.5]
[Data 2.1]	[Data 2.2]	[Data 2.3]	[Data 2.4]	[Data 2.5]
[Data 3.1]	[Data 3.2]	[Data 3.3]	[Data 3.4]	[Data 3.5]
[Data 4.1]	[Data 4.2]	[Data 4.3]	[Data 4.4]	[Data 4.5]
[Data 5.1]	[Data 5.2]	[Data 5.3]	[Data 5.4]	[Data 5.5]
[Data 6.1]	[Data 6.2]	[Data 6.3]	[Data 6.4]	[Data 6.5]
[Data 7.1]	[Data 7.2]	[Data 7.3]	[Data 7.4]	[Data 7.5]
[Data 8.1]	[Data 8.2]	[Data 8.3]	[Data 8.4]	[Data 8.5]
[Data 9.1]	[Data 9.2]	[Data 9.3]	[Data 9.4]	[Data 9.5]
[Data 10.1]	[Data 10.2]	[Data 10.3]	[Data 10.4]	[Data 10.5]

I am writing to you to say that I have received your letter of the 10th and am glad to hear that you are well.
I am writing to you to say that I have received your letter of the 10th and am glad to hear that you are well.
I am writing to you to say that I have received your letter of the 10th and am glad to hear that you are well.
I am writing to you to say that I have received your letter of the 10th and am glad to hear that you are well.

[Header 1]	[Header 2]	[Header 3]	[Header 4]	[Header 5]
[Data 1.1]	[Data 1.2]	[Data 1.3]	[Data 1.4]	[Data 1.5]
[Data 2.1]	[Data 2.2]	[Data 2.3]	[Data 2.4]	[Data 2.5]
[Data 3.1]	[Data 3.2]	[Data 3.3]	[Data 3.4]	[Data 3.5]
[Data 4.1]	[Data 4.2]	[Data 4.3]	[Data 4.4]	[Data 4.5]
[Data 5.1]	[Data 5.2]	[Data 5.3]	[Data 5.4]	[Data 5.5]
[Data 6.1]	[Data 6.2]	[Data 6.3]	[Data 6.4]	[Data 6.5]
[Data 7.1]	[Data 7.2]	[Data 7.3]	[Data 7.4]	[Data 7.5]
[Data 8.1]	[Data 8.2]	[Data 8.3]	[Data 8.4]	[Data 8.5]
[Data 9.1]	[Data 9.2]	[Data 9.3]	[Data 9.4]	[Data 9.5]
[Data 10.1]	[Data 10.2]	[Data 10.3]	[Data 10.4]	[Data 10.5]

The hours worked per day in month of highest employment and the standard working hours per week are shown by provinces in table 7(c). It should be noted that the statistics relating to hours of labour in columns 1, 2 and 3 are based on figures compiled for the month of highest employment, whilst those in columns 4 and 5 represent the total standard weekly hours of labour for the number of establishments reporting to the Bureau. On this account and because of a considerable number of the smaller confectionery plants working less than 8 hours per day, the relationship between daily and weekly hours of labour computed on the above basis was for the Dominion 9.06 whilst the average weekly hours worked out at 48.00 per plant.

Table 7(c).- Hours of Labour, per day and per week, 1928.

Province	Total hours worked per day and number of wage earners in month of highest employment			Standard working hours per week	
	Total hours	Total Wage-earners	Average hours per day per wage-earners	Total	Average
Canada	118,230	13,048	9.06	13,584	48.00
P.E. Island	5	45	9.00	158	52.66
Nova Scotia	12,563	1,329	9.45	607	55.18
New Brunswick	7,508	776	9.68	423	52.87
Quebec	31,991	3,436	9.31	2,581	52.67
Ontario	55,997	6,291	8.90	6,093	47.23
Manitoba	4,215	500	8.43	854	44.95
Saskatchewan	44	5	8.80	264	52.80
Alberta	1,920	217	8.85	643	42.87
British Columbia	3,946	489	8.07	1,961	44.57

FUEL CONSUMPTION

The quantity and cost value delivered at the factory or works during 1928 of the various classes of fuel used, are presented in table 8. Coal and coke represented 47.5 per cent of the total cost of all fuel, gasoline and fuel oils 4.5 per cent and gas, artificial and natural, 15.2 per cent. Compared with 1927 the average cost price of all classes of fuel except oils show variations ranging from \$1.86 per ton for lignite coal to .002 cents per gallon for fuel oils. Gas, artificial and natural, decreased by 17,922 M cu. ft. but increased in value by \$9,635. Electricity purchased during the year cost \$252,894 or an average of 1.34 cents per k.w.h., and contributed almost 30 per cent of the total cost of power used.

Table 8.-Fuel Consumption in Canada by Classes, 1928.

Classes of fuel	Units of Measure	Quantity	Cost value at factory or works	Average cost per unit
Bituminous coal, all grades	tons of 2,000 lb.	46,981	\$ 296,665	\$ 6.31
Anthracite coal, all grades	" "	6,342	77,799	12.26
Lignite coal, all grades	" "	273	2,896	10.61
Coke	" "	2,674	23,736	8.88
Gasoline	Imp. gals.	12,048	3,132	.26
Fuel oils	" "	396,684	35,366	.089
Wood	Cord	855	5,498	6.43
Gas, artificial and natural	1,000 cu. ft.	176,502	129,048	.73
Electricity purchased for power only	k.w.h.	18,818,623	252,894	.0134
All other fuel(not specified)	-	-	16,561	-
Total cost of fuel and electricity	-	-	\$ 843,595	-

Faint header text at the top of the page, possibly including a title or date.

Section of text located below the first table, containing several lines of faint, illegible text.

Faint footer text at the bottom of the page, possibly including a signature or reference.

POWER INSTALLATION

The classes of power installed in the industry in 1928 are shown in table 9 by number of units installed and by horsepower according to manufacturer's rating. The horsepower used for manufacturing purposes is found by the addition of items 1, 2, 3 and 4a and totalled 19,854 h.p. of which 16,469 h.p. or 82.9 per cent was of electrical origin. Boilers installed numbered 119 with a boiler h.p. capacity of 9,862.

Table 9.- Power Installation, 1928.

Classes of power	Number of Units	Horsepower according to manufacturer's rating
1. Steam engines and turbines	45	3,105
2. Oil, gas and gasoline engines	3	30
3. Hydraulic turbines or water wheels	2	250
4. Electric motors:-		
(a) Operated by purchased power	2,296	16,469
(b) Operated by power generated by establishment	26	85
Total power for manufacturing purposes	2,346	19,854
Total electric motor installation	2,322	16,544

COST OF MATERIALS USED

The quantity and cost value at the factory or works of the various materials used in the biscuit, confectionery, cocoa and chocolate industry in 1928 is shown in table 10. The total cost of such materials for the year was \$28,480,230, an increase of \$398,889 from 1927. The increase in the cost of materials is due principally to the increase in the quantity of flour and of sugar used. The average price of these two commodities in 1927 was \$6.26 per barrel of flour, and 6.38 cents per pound for sugar, whilst in 1928 the prices were respectively \$6.21 for flour and 5.82 cents for sugar.

Table 10.- Materials used by quantity and cost value, 1928.

Classes of materials	Unit of Measure	Quantity	Cost value at the factory
			\$
Flour	Barrels	381,656	2,370,769
Salt	"	9,614	27,127
Sugar	Pound	85,814,373	4,996,694
Butter	"	1,179,477	445,753
Cooking oils	"	475,199	61,349
Lard	"	2,205,831	312,912
Shortening	"	7,007,967	986,087
Cream	Gallon	611,705	822,632
Milk, fresh & Skim	"	933,513	246,882
Milk, condensed	Pound	3,846,335	348,662
Milk, powdered	"	2,364,458	356,121
Eggs	Dozen	508,912	155,675
Fruits	Pound	3,179,495	534,041
Nuts	"	7,110,747	1,265,324
Glucose	"	27,863,641	1,234,618
Chocolate and cocoa	"	9,425,004	2,042,556
Cocconut	"	1,718,291	260,365
Cocoa beans	"	13,936,910	2,080,837
Cocoa butter	"	6,672,596	2,265,040
All other materials (value only)	-	-	3,497,292
Containers of all kinds	-	-	4,169,494
Total cost of materials	-	-	28,480,230

FORM NO. 10

STATE OF TEXAS, COUNTY OF ...

Know all men by these presents that ...

WITNESSETH that the above and foregoing is the true and correct copy of the original as the same appears from the records of the County Clerk of the County of ...

IN WITNESS WHEREOF, I have hereunto set my hand and the seal of said County at the City of ... this ... day of ... 19...

County Clerk of ...

THE BISCUIT, CONFECTIONERY, COCOA AND CHOCOLATE INDUSTRIES IN CANADA, 1928.

IMPORTS AND EXPORTS

Table 11 presents the imports for consumption and the exports of Canadian produce for the calendar year 1928 by commodities and countries. Including imports of chicle, cocoa and chocolate, the total value in 1927 of imports was \$6,485,164 while in 1928 the total value was \$6,253,352, being a decrease during the year of \$231,812. The value of Canadian goods exported during the year 1927 was \$1,047,152 as against \$1,024,375 in 1928 or a decrease of \$22,777. Of the total value of goods imported in 1928 23.2 per cent came from Britain and her colonies, 33.7 per cent from the United States and 43.1 per cent from other countries, whilst the percentage of Canadian produce exported to Britain and her colonies was approximately 73.1 per cent.

Table 11.-Imports and Exports of Biscuits, Confectionery, etc. during the calendar year 1928.

I M P O R T S			I M P O R T S		
Articles by countries	Quantity	Value	Articles by countries	Quantity	Value
Biscuits, not sweetened	lb.	\$	Cocoa butter lb.		\$
United Kingdom	2,249,332	261,473	United Kingdom	5,218,989	1,712,292
United States	1,267,561	119,579	United States	172,323	63,380
Other countries	903,497	127,055	Germany	2,087,443	681,749
	78,274	14,839	Netherlands	72,755	23,722
Biscuits, sweetened	lb.		Other Countries	2,852,457	932,355
United Kingdom	1,561,803	251,404		34,011	11,086
United States	270,072	87,377	Cocca paste or liquor, not sweetened	lb.	
Other Countries	1,176,112	144,652	United Kingdom	106,012	23,367
Confectionery, coated with or containing chocolate	lb.		United States	7,800	412
United Kingdom	685,403	209,835	United States	89,960	20,789
United States	221,088	79,132	Other Countries	8,252	2,166
Other Countries	207,255	54,764	Cocoa paste or liquor sweetened	lb.	
Sugar candy and confectionery of all kinds, n.o.p.	lb.		United Kingdom	153,476	39,850
United Kingdom	4,063,996	721,085	United States	10,322	2,284
United States	2,915,270	518,920	Other Countries	118,841	31,199
Other Countries	899,763	159,109		24,313	6,367
	248,963	43,056	Cocoa or chocolate in powdered form	lb.	
Chicle or sappato gum, crude	lb.		United Kingdom	1,760,233	145,102
United States	1,310,268	586,164	United States	79,283	9,197
British Honduras	885,991	374,856	United States	651,429	71,857
Other Countries	422,827	210,927	Netherlands	1,002,761	61,062
	1,450	381	Other Countries	26,760	2,986
Total imports by Countries (value only)			Cocoa or chocolate n.o.p.	lb.	
United Kingdom	-	1,239,674	United Kingdom	195,124	88,070
United States	-	2,105,580	United States	108,691	72,885
Br. Honduras	-	210,927	United States	77,953	12,521
Netherlands	-	993,417	Other Countries	8,480	2,664
Other Countries	-	1,703,754			
Total Imports	-	6,253,352	E X P O R T S		
Cocoa beans, not roasted or ground	cwt.		Biscuits & bread cwt.		
United Kingdom	167,735	2,214,710	United States	978,400	200,064
United States	22,691	286,127	Br. Guiana	63,700	8,525
British South Africa	29,993	427,029	Trinidad and Tobago		
Jamaica	27,403	349,901	Tobago	125,700	20,497
Trinidad and Tobago	12,863	172,298	Jamaica	80,800	9,497
Other Br. West Indies	49,083	664,160	Other B.W. Indies	121,600	17,428
Other Countries	19,650	210,937	Other Countries	220,300	32,047
	6,052	104,258	Totals	1,590,500	288,058

Table 11.-Imports and Exports of Biscuits, Confectionery, etc.
during the calendar year 1928(Cont'd)

EXPORTS (Cont'd)

Articles by countries	Quantity	Value
		\$
Candy lb.		
United Kingdom	8,662	3,762
United States	10,909	4,759
Br.South Africa	532,655	144,385
Newfoundland	438,937	141,197
New Zealand	410,336	122,121
Other Countries	240,551	81,192
Totals	1,642,050	497,416
Confectionery, n.o.p. (Value only)		
United Kingdom	-	78
United States	-	5,684
Other Countries	-	54,121
Totals	-	89,883
Chewing gum (Value only)		
United Kingdom	-	117,608
Other Countries	-	31,410
Totals	-	149,018
Total Exports by Countries (Value only)		
United Kingdom	-	121,448
United States	-	210,507
Australia	-	32,110
British Guiana	-	11,716
British South Africa	-	148,379
China	-	27,594
Trinidad and Tobago	-	27,799
Jamaica	-	11,477
Bermuda	-	18,193
Other Br.West Indies	-	35,010
Netherlands	-	6,039
Newfoundland	-	212,249
New Zealand	-	130,922
Other Countries	-	30,932
Total Exports	-	1,024,375

THE UNIVERSITY OF CHICAGO
LIBRARY

- 24 -

THE UNIVERSITY OF CHICAGO
LIBRARY

UNIVERSITY OF CHICAGO
LIBRARY

Firms Manufacturing Biscuits, Confectionery and Ice Cream, 1928.
Including Cocoa & Chocolate
Prince Edward Island.

<u>Name</u>	<u>Address</u>
A. Livingstone	162 Queen St., Charlottetown
Thos. F. White	109 Grafton St., Charlottetown
Annie L. Hunter	Summerside

Nova Scotia

Antigonish Ice Cream Mfg. Co. Ltd.	Antigonish
Eastern Ice Cream Co. Ltd.	14 Townsend St., Sydney
Halifax Creamery, Reginald Hart	257 Brunswick Ave., Halifax
G.I. Hamilton & Sons	Commercial St., Pictou
J.M. Horton	Box 827, Yarmouth
P.J. Lynch	164 Prince St., Sydney
Moirs Limited	128 Argyle St., Halifax
W.B. Murphy	935 Prince St., Truro
Geo. H. Yeaton & Sons Ltd.	Hantsport
Geo. Deveau & A. Cann	Yarmouth
James Reid	Amherst
Eastern Ice Cream	Hebron
Philips Candy Co., Raymond Titus	Yarmouth

New Brunswick

Corona Company Ltd.	277 Union St., St. John
Ganong Brothers Ltd.	Water St., St. Stephen
W.H. Golden	374 Queen St., Fredericton
Canada Biscuit Co. Ltd. (Marven Plant)	Moncton
Peter Pappadakas Olympia Confectionery	Campbellton
T. Rankine & Sons Ltd.	10-14 Mill St., St. John
A.K. Currie	Woodstock
Frank White	239 Wentworth St., St. John

Quebec

Acton Biscuit Co. Ltd.	Acton Vale
Compagnie de Biscuit Aetna	1801 Avenue Delormier, Montreal
L.H. Belanger	209 rue Ash, Montreal
S. & I. Berman (Confectioners Ltd.)	2052 St. Lawrence Blvd., Montreal
Bonbons Candiak (Canada) Ltee.	128 rue St. Dominique, Quebec
Biscuiterie Jeanne d'Arc Ltee.	1380 Gilford St., Montreal
Louis Boulais	7 rue Champlain, St. Jean
Phileas Bussiere	7148 Boyer St., Montreal
Federal Confectionery, A. Cohen & L. Light	49 des Carrieres, Montreal
Charbonneau Limitee	1800 Nicolet, Montreal
David & Frere	1930 rue Champlain, Montreal
Viau Biscuits Corporation Ltd.	3401 Ontario est, Montreal
Robert Gibson & Sons (Canada) Ltd.	34 St. Gabriel St. Montreal
J.F. Gervais	353 Mont Royal Est., Montreal
J.N. Godin Ltd.	224-226 Notre Dame St., Three Rivers
A.F. Haddad	1963 Mt. Royal Ave. E., Montreal
Joliette Biscuit Co.	Joliette
Ovila Lachapelle	St. Esprit
Lalumiere & Frere	1227 St. Catharine E., Montreal
Laura Secord Candy Shops, Plant - 507 Place Viger	H.O. 60 Bathurst St., Toronto
Frs. Leclerc	163 rue Arago, Quebec
Walter M. Lowney Co. of Canada, Ltd.	169 William St., Montreal
La Manufacture de Biscuits et Confiseries de Scott Ltee.	Scott Junction
Molasses Crispetts Co. Ltd.	107 Lagauchetiere St. W., Montreal
Elzear Martell & Cie	Joliette
Masson & St. Germain	10 Ave. Morin, Montreal
Canada Biscuits Co. Ltd. Montreal Biscuit Co. Plant	100 Brewster Ave., Montreal
O'Pee-Chee-Co. Ltd.	4866 St. Lawrence Blvd., Montreal
Walter Baker & Co. Ltd. of Canada	1000 Albert St. Montreal
J.S. Fry & Sons (Canada) Ltd.	2025 Masson St., Montreal
H. Dufresne Co. Ltd.	577 St. Dominique St., Montreal
W.J. Boyd Chocolate Ltd.	3081 Ontario St. E., Montreal
S.A. Allen Co. Ltd.	776 Chatham St., Montreal

Firms Manufacturing Biscuits, Confectionery & Ice Cream, 1928 - Cont'd.
Including Cocoa & Chocolate
Quebec - Cont'd.

Jule Caron
National Licorice Co. Ltd.
Page & Shaw (Canada Ltd.)
G.N. Pichet
J. Maniatis & J. Mechas, Regina Candy Co.
Standard Confectionery Co.
Sacharen Bros.
Compagnie de Biscuit Stuart
La Sucrierie Canadienne Ltee.
Pepin & St. Germain
Nacjeb Thoun
Viau Biscuit Corp. Ltee.
Delphis Verdun
The Gandy Gum Co. of Canada, Ltd.
Vaillancourt Limitee
St. Lawrence Candy Co. (J. Kruichansky)

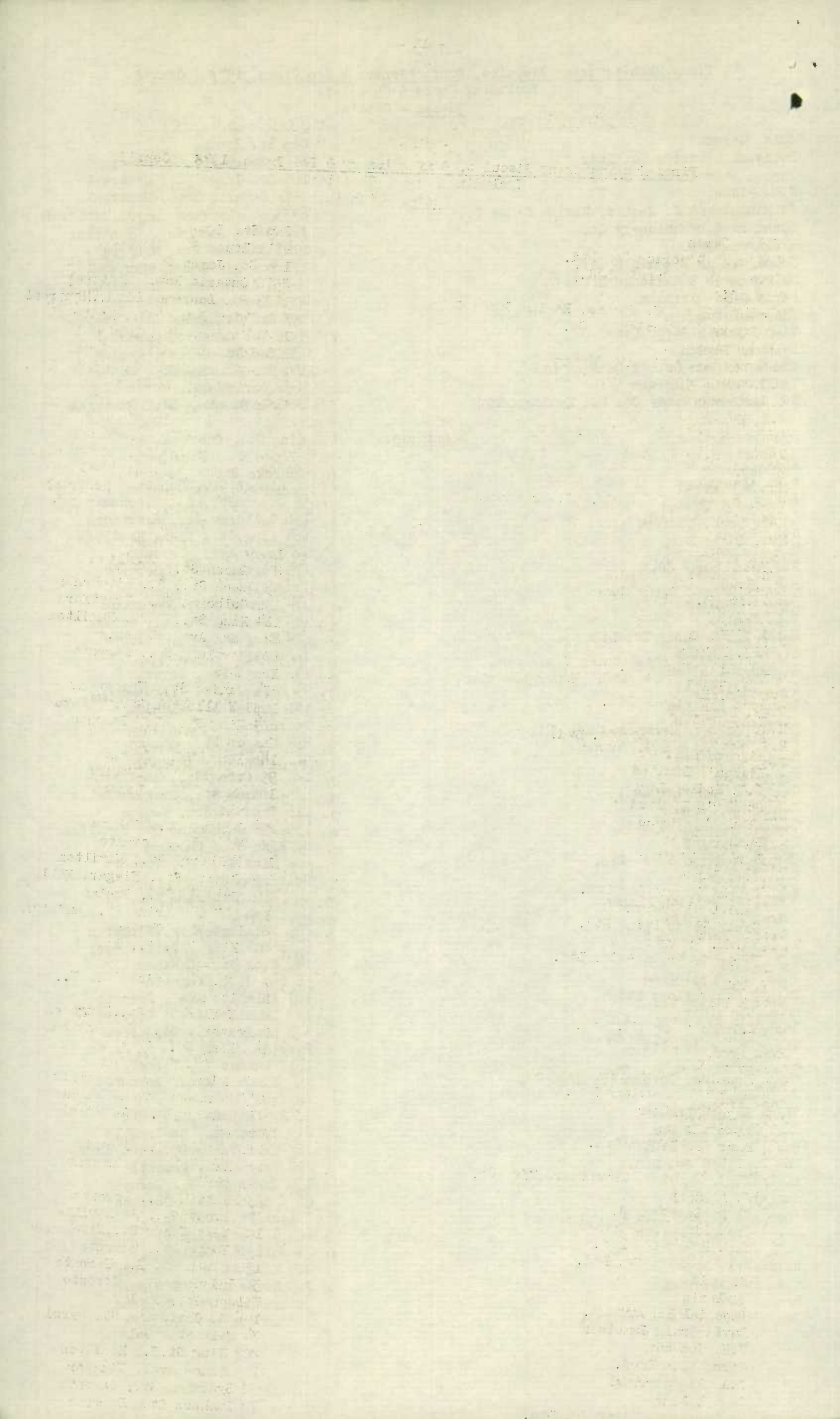
Cap St. Ignace
4211 Rouen St., Montreal
165 St. James St., Montreal
2572 Ontario Est., Montreal
6533 St. Lawrence Blvd., Montreal
761 Notre Dame Est., Montreal
1023 Cadieux St., Montreal
171 Laurier Ouest, Montreal
108 - liere Ave., Limoilou, Que.
4058 Parthenias, Montreal
789 St. Catharine St., Montreal
3401 Est Ontario, Montreal
230 rue St. Helene, Quebec
356 St. Antoine St., Montreal
1691 Dorion St., Montreal
1463 Parthenais St., Montreal

Ontario.

Abdallah, Alex
W.R. Alchin
Adolph B. Amis
Artemis Sweets Ltd.
Geo. Baker
H.B. Balmer
Bee Hive Candy Co.
H.B. Beach
Bean & Westlake Ltd.
W.L. Beaton
Betty Brown Candy Co. Ltd.
Bighams Limited
Bigham's Limited
C.J. Bodley Ltd.
Boomer's Limited
Alexander Brace
Bunnell Bros.
Burgers Limited
T.A. Burke
Cairns Creameries Ltd.
Candyland Company
Candy Specialties Ltd.
Wm. P. Georgas
Christie Brown & Co. Ltd.
S.O. Coates
W.H. Cross

W.J. Crothers Co. Ltd.
P. Lazarou
W.E. Crump
Chas. A. Cunningham
Dainty Confections Ltd.
Hyman Danziger
George Danos
Harry F. Delion Ltd.
A. Denison
Chas. Hopkins, Devonshire Mfg. Co.
J. Diamant
Diana Sweets Ltd.
E.F. Dickens & Son
C.H. Doerr Co. Ltd.
The T. Eaton Co. Ltd.
F. Emid
Huyler's
Imperial Biscuit Co.
David Craig Jameison
W.F. Jameson
Horncastle Bros.
C.A. Buckberrrough
Samuel Lent
Dominion Chocolate Co. Ltd.

London
26 Simcoe St., Oshawa
53 Queen St., S., Kitchener
156 Colborne St., Brantford
164 King St., East, Hamilton
22 Geary Ave., Toronto
170 Portland St., Toronto
Iroquois
374 Dundas St., Woodstock
1097 Wellington St., Ottawa
624 King St., W., Toronto
Ingersoll
146 Yonge St., Toronto
99 Ontario St., Toronto
181 Dundas St., London
Petrolia
294 Lisgar St., Ottawa
92 Yonge St., Toronto
129 Mulberry St., Hamilton
535 Simcoe St., Niagara Falls
116 Wyndham St., Guelph
155-157 Catherine St., Hamilton
82 King St., Chatham
202 King St., E., Toronto
Collingwood
107 St. Catharine St., W.,
Hamilton
209 Wellington St., Kingston
Huronario St., Collingwood
146 King St., Chatham
56 Bay St., Kingston
107 Atlantic Ave., Toronto
123 Dennison Ave., Toronto
475 Dundas St., Woodstock
Preston
1514 Dundas W., Toronto
159 Kindall Ave., Toronto
Hanover
33 Britain St., Toronto
215 Front St., Belleville
128 West Weber St., Kitchener
190 Yonge St., Toronto
130 Queen St. E., Toronto
36 Sydenham St., Toronto
Wilson St., Guelph
106 S. Christina St., Sarnia
74 Main St., Galt
209 King St. E., Hamilton
705 Bruce Ave., Windsor
38 Sydenham St., Toronto
72 Duchess St., Toronto



Firms Manufacturing Biscuits, Confectionery & Ice Cream, 1928 - Cont'd.
 Including Cocoa & Chocolate
Ontario - Cont'd.

<u>Name</u>	<u>Address</u>
W. Simpson	Ridgetown
Christopher Janos	287 Bank St., Ottawa
Geo. Economy	Kenora
S.D. Eplett & Sons	Lake Shore Rd., New Liskeard
S. Evison	1750 St. Clair Ave., W., Toronto
S. Gallo	Fort Frances
Michael Georgas	20 Kent St., Lindsay
G.H. Foster	1595 Dundas St. W., Toronto
Gettas Bros.	Tillsonburg
Geo. P. Gettas	44 Norfolk St., Simcoe
T.D. Grant Limited	107 Wyndham, Guelph
C. Grierson	313 Ottawa St. N., Hamilton
H.E. Haack	Elmira
George Heller	156 King St., Chatham
Messrs. M. & H. Hock	2506 Yonge St., Toronto
E. Hunt	86 Pembroke St. W., Pembroke
Hunts Limited	62 Alcorn Ave., Toronto
Yeates & Thomas	27 Wyndham St., Guelph
Kerr Bros. Limited	54 Wolsely St., Toronto
Mrs. Edith King	377 Dundas St., Woodstock
Laing & Sons, Ltd.	169 King William St., Hamilton
Chas. Lauder Co. Ltd.	97 Ontario St., Toronto
Laura Secord Candy Shops	60 Bathurst St., Toronto
J.T. Legault	4 Bridge St., Belleville
F.F. Long	Campbellford
William E. Lyons	Newmarket
M. Lyriotakis Royal Candy Store	122 King St., Brockville
Canada Biscuit Co. Ltd., McCormick plant	Dundas St., London
John Makris	600 Victoria St., Fort William
Thos. Manjuris	1306 Bloor St. W., Toronto
N.G. Donkas, Marathon Candy Kitchen	331 George St., Peterboro
R.J. Watson & R.G. Watson	363 Sorouren Ave., Toronto
Geo. Masoud	238 Princess St., Kingston
J.X. Mays	216 King W., Chatham
Hamblin-Metcalf Ltd.	Weber St., Kitchener
Life Savers Ltd.	Prescott
Chas. Jentsch	Essex St., Toronto
Peter Moores	260 Front St., Belleville
James Maskos	Arnprior
J.M. Moffatt	260 Ottawa St., Hamilton
William Neilson Limited	277 Gladstone, Toronto
Mrs. W. Northey	Fenelon Falls
George Bakageorge	34 Dunlop St., Barrie
Tozias, Chris.	106 Kent St., Lindsay
Palmer's	186 Dundas St., London
N.E. Palmer	61 Main St., Galt
George Panaritis	9 Prospect Ave., Cobalt
William Patterson Ltd.	Brantford
The Patterson Candy Co. Ltd.	951 Queen St. W., Toronto
Ryan Bros.	769 Dovercourt Rd., Toronto
Canada Biscuit Co. Ltd.	London
Peterson Bros.	Almonte
Pope Bros.	Picton
J.W. Prangley	Front St., Strathroy
Purity Popcorn Co.	148 Ossington Ave., Toronto
H.G. Rankin	81 Ontario St., Stratford
H. McArdle	54 King St. W., Hamilton
W.S. Hazlitt	362 Bathurst St., Toronto
Rowntree Co. Ltd.	72 Sterling Rd., Toronto
Golden Hours Candy Studio	1086 Bathurst St., Toronto
M. Loeb Limited	429 Sussex St., Ottawa
Roy Candy Co.	38 Sydenham St., Toronto

Firms Manufacturing Biscuits, Confectionery & Ice Cream, 1928 - Cont'd.
 Including Cocoa & Chocolate
Ontario - Cont'd.

<u>Name</u>	<u>Address</u>
A.K. Roberts	50 Market St., Brantford
Robertson Bros. Ltd.	103 Queen St. E., Toronto
Quaker Candy Co. Ltd.	422 Queen St. E., Toronto
F.J. Sabine, Queen Candy Works	5 Fenning St., Toronto
J.H. Schnieder	Brampton
Minnie E. Sedley	58 Wyandotte, Walkerville
Clay Campbell & J. Janetos	Wallaceburg
Booth Bros.	Sudbury
W.P. Tickell	Port Hope
National Biscuit Co.	139 Sterling Rd., Toronto
Jno. W. Thomas	70 Erie St., Brantford
Kalma Schiff	176 Elm St., Toronto
J.R. Townley	517 St. Clair Ave., Toronto
Vair & Blackwell	323 Talbot St., St. Thomas
Victoria Candy Kitchen W. & N. Batcules	165 St. Paul Street, St. Catharines
J.J. Ward	1046 Gerrard St., Toronto
R. Watson Co.	363 Soraureen Ave., Toronto
William T. Westgate	215 Sandwich St., Ford
George Weston Ltd.	134 Peter St., Toronto
Williard's Chocolate Ltd.	443 Wellington W., Toronto
D.P. Wipper	207 St. Paul St., St. Catharines
James Wood	281 Roncesvalles, Toronto
H.B. Wright Co.	Brockville
Chas. Yates & Co. Ltd.	8 Paisley St., Guelph
Capital Candy Co.	318 Rideau St., Ottawa
Beech-Nut Co. of Canada Ltd.	Corner Cumberland, Hamilton
Canadian Chewing Gum Co. Ltd.	405 Logan Ave., Toronto
The National Chicle Co. Ltd.	365 Sorauren Ave., Toronto 3.
O-Pee-Chee Co. Ltd.	420 Adelaide St., London
William Wrigley Jr. Co. Ltd.	235 Carlaw Ave., Toronto 8.

Manitoba

Wm. Bertrand & Co.	918 Rosser Ave., Brandon
Bond & Ronald Ltd.	701 Wellington St., Winnipeg
W.J. Boyd Co. Ltd.	Portage Ave. & Spence St., Winnipeg
H.W. Chislett	491 Jubilee Ave., Winnipeg
Chocolate Shop	268 Portage Ave., Winnipeg
Brown & Boullis	Main St., Dauphin
J. Emma	455 Portage Ave., Winnipeg
L. Galpern	Traders Bldg., Winnipeg
Hyde-Robertson	170 Isabel St., Winnipeg
Geo. W. Jones	273 Huntleigh St., Winnipeg
Mitrou Candy Co.	836 Rosser Ave., Brandon
A.L. Moran Co. Ltd.	561 Portage Ave., Winnipeg
Canada Biscuit Co. Ltd.	311 Rose Ave. & 143 Portage Ave. E., Winnipeg
Holland Ice Cream Co. Ltd.	234 Pritchard Ave., Winnipeg
Picardy Candy Ltd.	690 McGee St., Winnipeg
Purity Ice Cream Co. Ltd.	234 Pritchard Ave., Winnipeg
Samuel Shore	243 Jarvis Ave., Winnipeg
P. Simonot	254 Main St., Winnipeg
Andrew Vlassie	124 Osborne St., Winnipeg
Ernest Barber	564 Arlington St., Winnipeg

Saskatchewan

Oscar Faillie	630 Broadway, Saskatoon
Home Candy Works	Hamilton St., Regina
Miss Mena Shindler	Third Ave., Kamsack
Robt. Shabeg	1042 King St., North Battleford
James Endicott	Moosomin

Author: [Faint text]

[Faint text]

[Faint text]

[Faint text]

[Faint text, left column]

[Faint text, right column]

[Faint text]

[Faint text]

Firms Manufacturing Biscuits, Confectionery & Ice Cream, 1928 - Cont'd.
Including Cocoa & Chocolate

<u>Name</u>	<u>Alberta</u>	<u>Address</u>
Bridgeman & Stallworthy		1217 - 1st St., West, Calgary
A. J. Campbell		14th St. W., Calgary
W. R. Hartley		10428 Jasper Ave., Edmonton
P. Griffen, John Fee & A. Zarkas		140 - 8th Ave. E., Calgary
Canada Biscuit Co. Ltd.		83rd St. & 114th Ave., Edmonton
Mrs. S. H. Oliver		1005A First St. West, Calgary
Nick Spirow		333 - 5th St. South, Lethbridge
Pavey Candy Co.		9939 - 9945 Jasper Ave., Edmonton
A. A. Pinckney		10444 Whyte Ave., Edmonton
Plunkett & Savage		224 - 9th Ave. West, Calgary
Rochons Ltd.		122A - 8th Ave. W., Calgary
The Taberta Candy Co. Ltd.		Medicine Hat
Independent Biscuit Co. Ltd.		Cor. 11th & 4th Sts. E., Calgary
Alberta Candy Co.		9684 Jasper Ave., Edmonton
W. H. Lively		Wetaskiwin

British Columbia

Charles Eyre		1927 - 2nd Ave. West, Vancouver
F. J. H. Baines		1409 Douglas St., Victoria
Borland Ice Cream Co. Ltd.		1520 - 6th Ave. W., Vancouver
C. A. Chatterton		3047 Granville St., Vancouver
Hedley Craven Trading & Craven Candy Co.		507 George Rd., Victoria
P. Maffeo & M. Galasso		24 Prideaux St., Nanaimo
E. Emad		317 - 3rd Ave., Box 729, Prince Rupert
Empress Candy Co., N. Tselentis		Vancouver
Leigh & Cuthbertson		1006 Pender St. E., Vancouver
W. H. Harris & Son.		5704 Victoria Rd., S. Vancouver
Kelly Confection Co. Ltd.		1106 Mainland St., Vancouver
Peter Karas		652 Yates St., Victoria
Henrietta McKenzie		33 Victoria Crescent, Nanaimo
Horace Manning		McKenzie Ave., Revelstoke
National Biscuit & Confectionery Ltd.		1706 First Ave., W. Vancouver
Thos. S. Mayson		1037 Granville St., Vancouver
Ormonds, Ltd.		Main & Russell Sts., Victoria
Port O'Van Ice Cream Ltd.		1170 Hornby St., Vancouver
Dominion Biscuit Co. Ltd.		990 - 999 Powell St., Vancouver
Rochon's Ltd.		Saanichton
Rogger's Chocolates		913 Government St., Victoria
George Pappas		654 Columbia St., New Westminster
Robert Sapp		767 Granville St., Vancouver
W. Sawyer		Armstrong
Irving, Fred.		568 Broadway, Vancouver
Sinclair Bros.		310 Cordova St., Vancouver
Garret Smith		1237 Rudlin St., Victoria
H. S. Stevenson		725 Yates St., Victoria
L. H. & S. E. Turner		207 Kingsway, Vancouver
J. C. Watkins		716 Davie St., Vancouver
Whites Ltd.		Qualicum Beach
Ernest Wiper		726½ Yates St., Victoria
A. Worsley		Vancouver
Wanda Ziegler		1472 - 12th Ave. W., Vancouver
Velvet Ice Cream Co.		Prince Rupert
Pauline Johnson Candy Shop		Vancouver
Mrs. Levonie Weedon		1032 Robson St., Vancouver
The Dot Candy Co. Ltd.		1729 Albert St., Vancouver
Henrietta Owen		708 Robson St., Vancouver
Hazelwood Creamery Ltd.		351 Keefer St., Vancouver
R. C. Purdy Ltd.		675 Granville St., Vancouver
K. C. M. Killop		2060 Trafalgar, Vancouver
W. H. Rutter		835 Commercial, Vancouver
Welch's Ltd.		814 Robson St., Vancouver
Mrs. M. Payne		2641 - 4th Ave. W., Vancouver.

STATISTICS CANADA LIBRARY
BIBLIOTHÈQUE STATISTIQUE CANADA



1010712139