

32-202

NOT FOR LOAN
NE S'EMPRUNTE PAS

DOMINION BUREAU
OF STATISTICS
FEB 17 1931
PROPERTY OF THE
LIBRARY

CANADA
DEPARTMENT OF TRADE AND COMMERCE
DOMINION BUREAU OF STATISTICS
CENSUS OF INDUSTRY

REPORT
on the
BISCUIT, CONFECTIONERY, COCOA
and
CHOCOLATE INDUSTRIES
in
CANADA
1929

-----+ + +-----

Published by Authority of the Hon. H. H. Stevens, M.P.,
Minister of Trade and Commerce

+ + +

OTTAWA

1931

208-20

NOT FOR CIRCULATION
STATISTICAL SECTION

DEPARTMENT OF TRADE AND COMMERCE
COMMONWEALTH OF AUSTRALIA
BUREAU OF STATISTICS
INDUSTRY DIVISION

NOTE.- The statistics published in the present statement include only the statistics of such manufacturing establishments as make Biscuits and confectionery as their principal product. Statistics relating to specific products are therefore not to be regarded as comprehensive, as products like, Biscuits and confectionery are also found as secondary products of the following industries:-

1. Bread and other bakery products
2. Coffee and spices
3. Medicinal and pharmaceutical preparations

1939

Published by Authority of the Hon. J. H. Scullion, M.P.
Minister of Trade and Commerce

1939

1939

DEPARTMENT OF TRADE AND COMMERCE
DOMINION BUREAU OF STATISTICS
CENSUS OF INDUSTRY
OTTAWA-CANADA

Dominion Statistician: R. H. Coats, B.A., F.S.S. (Hon.), F.R.S.C.
Chief, Census of Industry: J. C. Macpherson

THE BISCUIT, CONFECTIONERY, COCOA AND CHOCOLATE INDUSTRIES IN CANADA, 1929.

Ottawa, December, 1930.- A report on the Biscuit, Confectionery, Cocoa and Chocolate Industries in Canada is herewith presented for the calendar year 1929. The number of individual plants reported to the Bureau in 1929 totalled 281, being a decrease of 2 from the preceding year. The provinces of Nova Scotia, New Brunswick and Manitoba remained stationary in the number of operating plants, whilst Ontario, Saskatchewan and Alberta show decreases, Ontario having a decrease of 5 Saskatchewan 3 and Alberta 2. Quebec, British Columbia and Prince Edward Island show increases of 5, 2 and 1 respectively.

The distribution of plants by provinces for each of the years 1928 and 1929 was as follows:

Provinces	1929	1928
Prince Edward Island	4	3
Nova Scotia	11	11
New Brunswick	8	8
Quebec	54	49
Ontario	124	129
Manitoba	19	19
Saskatchewan	2	5
Alberta	13	15
British Columbia	46	44
Total, CANADA	281	283

Of the total factories reporting in 1929, the number making biscuits only was 17, biscuits and confectionery 18, ice cream only 19, and confectionery including cocoa and chocolate only 227. Statistics of the chewing gum industry are included in the confectionery section of this report.

Comparative Statistics.

The principal statistics of the industry are compared by provinces in Table 1 for the calendar years 1928 and 1929. Increases appear in capital invested amounting to \$2,967,820 or 5.67 per cent, in the value of production of \$2,088,578 or 3.46 per cent and in the cost of salaries and wages of \$231,247 or 1.84 per cent. Decreases are shown in the number of persons employed of 201 or 1.51 per cent, and in the cost of materials of \$762,341 or 2.68 per cent.

Table 1.- Principal Statistics compared by provinces 1928 and 1929.

	Estab- lish- ments	Capital employed	Employees	Salaries and wages	Cost of materials	Value of products
1929	No.	\$	No.	\$	\$	\$
CANADA	281	55,320,902	13,073	12,765,876	27,717,889	62,492,801
P. E. Island	4	11,070	8	4,663	15,251	32,471
Nova Scotia	11	4,684,463	1,233	1,111,542	1,534,703	3,588,769
New Brunswick	8	2,282,364	684	556,265	1,343,458	2,746,065
Quebec	54	12,115,138	3,609	2,967,460	7,766,807	15,450,474
Ontario	124	31,253,372	6,294	6,798,724	14,303,333	34,357,397
Manitoba	19	2,321,172	483	488,730	1,102,305	2,450,345
Saskatchewan	2	6,908	2	1,570	2,921	6,590
Alberta	13	1,188,329	269	320,401	516,851	1,359,892
British Columbia	46	1,458,086	491	516,521	1,131,660	2,500,798
1928						
CANADA	283	52,353,082	13,274	12,534,629	28,480,230	60,404,223
P. E. Island	3	7,736	5	2,980	6,748	13,912
Nova Scotia	11	4,437,146	1,270	1,094,236	1,620,205	3,439,530
New Brunswick	8	2,209,423	714	558,813	1,500,368	2,901,756
Quebec	49	11,874,419	3,461	2,846,248	7,580,505	14,743,227
Ontario	129	29,657,262	6,510	6,713,379	14,555,946	33,219,234
Manitoba	19	1,687,117	474	467,726	1,237,561	2,348,842
Saskatchewan	5	44,995	5	3,360	7,195	16,150
Alberta	15	1,057,858	323	311,790	554,445	1,154,623
British Columbia	44	1,377,126	512	536,097	1,417,257	2,566,949

STATEMENT OF CURRENT FINANCIAL POSITION

The accompanying notes are an integral part of these financial statements.

The amounts shown in this statement are in thousands of dollars.

Assets	1987	1986
Current assets	1,234	1,100
Property, plant and equipment	567	540
Intangible assets	123	110
Other assets	89	75
Total assets	2,013	1,825
Liabilities		
Current liabilities	789	750
Long-term liabilities	1,224	1,075
Total liabilities	1,993	1,825
Equity		
Common stock	100	100
Retained earnings	1,913	1,725
Total equity	2,013	1,825

The accompanying notes are an integral part of these financial statements.

The amounts shown in this statement are in thousands of dollars.

Assets	1987	1986	1985	1984	1983
Current assets	1,234	1,100	1,050	980	920
Property, plant and equipment	567	540	520	500	480
Intangible assets	123	110	100	90	80
Other assets	89	75	70	65	60
Total assets	2,013	1,825	1,740	1,635	1,540
Liabilities					
Current liabilities	789	750	720	700	680
Long-term liabilities	1,224	1,075	1,020	935	860
Total liabilities	1,993	1,825	1,740	1,635	1,540
Equity					
Common stock	100	100	100	100	100
Retained earnings	1,913	1,725	1,640	1,535	1,440
Total equity	2,013	1,825	1,740	1,635	1,540

THE BISCUIT, CONFECTIONERY, COCOA AND CHOCOLATE INDUSTRY IN CANADA, 1929
Size of Establishments.

In view of the tendency towards concentration in industrial enterprises, a series of tables has been prepared presenting in a three fold way the size of establishments in the Biscuit and Confectionery industry measured by (a) capital investment, (b) gross value of production and (c) employment, all within certain specified groups or limitations for the calendar years 1928 and 1929. The tables further indicate the movement of capital, production and employment within the industry.

In 1929, the number of establishments reporting was 281 with a total capital investment of \$55,320,902, a total gross value of production of \$62,492,801 and a total employment of 13,073. Of the total number of establishments 48 had a capital investment of \$49,719,620 or 89.9 per cent of the total investment and an average investment of \$1,035,826 per establishment; 54 establishments had a gross value of production amounting to \$55,573,412 or 88.9 per cent of the total production and an average production of \$1,029,137 per establishment. In employment 33 establishments had 9,702 persons on their payroll or 74.2 per cent of the total number employed and an average employment of 294 per establishment.

In 1928, the number of establishments reporting was 283 with a total capital investment of \$52,353,082, a total gross value of production of \$60,404,223 and a total employment of 13,274. Of the total number of establishments 44 had a capital investment of \$47,152,206 or 90.06 per cent of the total investment with an average investment of \$1,071,641 per establishment. In gross value of production 53 establishments had a total production of \$53,259,189 or 88.17 per cent of the total for the industry and an average production of \$1,004,890 per establishment. In employment 33 establishments had a total payroll of 9,857 or 74.26 per cent of the total number employed and an average employment of 299 per establishment.

(a) Capital invested in establishments grouped according to value, 1928 and 1929.

Groups of value of capital	1929			1928		
	Estab-lish-ments	Capital invested	Average capital	Estab-lish-ments	Capital invested	Average capital
	No.	\$	\$	No.	\$	\$
Under \$50,000	200	2,227,817	11,139	203	895,687	4,412
\$50,000 to under \$100,000	19	1,379,090	72,588	13	937,606	72,123
\$100,000 to under \$200,000	14	1,994,375	142,455	23	3,367,583	146,417
\$200,000 to under \$500,000	24	7,503,910	312,663	21	6,874,806	327,372
\$500,000 to under \$1,000,000	10	7,445,488	744,548	9	6,845,592	760,621
\$1,000,000 and over	14	34,770,222	2,483,587	14	33,431,808	2,387,986
Total	281	55,320,902	196,872	283	52,353,082	184,993

(b) Gross value of production in establishments grouped according to value, 1928 and 1929.

Groups of value of production	1929			1928		
	Estab-lish-ments	Gross Value of Production	Average Value of Production	Estab-lish-ments	Gross Value of Production	Average Value of Production
	No.	\$	\$	No.	\$	\$
Under \$50,000	178	2,129,200	11,962	176	2,010,867	11,425
\$50,000 to under \$100,000	31	2,228,008	71,871	35	2,390,770	68,308
\$100,000 to under \$200,000	18	2,562,181	142,343	19	2,743,397	144,389
\$200,000 to under \$500,000	22	7,115,210	323,414	25	8,587,064	343,483
\$500,000 to under \$1,000,000	15	10,284,639	685,643	11	7,614,601	692,236
\$1,000,000 and over	17	38,173,563	2,245,504	17	37,057,524	2,179,838
Total	281	62,492,801	222,394	283	60,404,223	213,442

(c) Employees in establishments grouped by number, 1928 and 1929.

Groups of employees	1929			1928		
	Estab-lish-ments	Total Employees	Average Employees	Estab-lish-ments	Total Employees	Average Employees
	No.	No.	No.	No.	No.	No.
Under 20 employees	200	1,006	5.03	197	937	4.76
20 to under 50 employees	28	863	30.82	32	948	29.62
50 to under 100 employees	20	1,502	75.10	21	1,532	73.00
100 to under 200 employees	18	2,536	140.88	15	2,042	136.13
200 to under 500 employees	10	3,473	347.30	12	3,672	306.00
500 employees and over	5	3,693	739.00	6	4,143	690.50
Total	281	13,073	46.52	283	13,274	46.90

THE UNIVERSITY OF CHICAGO

Department of Chemistry
Chicago, Illinois

Received of _____
the sum of _____
for _____

This receipt is valid only if countersigned by the Treasurer of the University of Chicago.

Treasurer

Date

Name

Principal Statistics.

Table 2 presents the principal statistics of the industry in the Dominion for the calendar years 1928 and 1929. A column showing the increase or decrease of each particular item by amount and approximate percentage is added to complete the table.

Table 2.- Principal Statistics Compared, 1928-1929.

Principal Statistics		1929	1928	(% Increase or Decrease (-))	
				Amount	Per cent
Establishments reporting	No.	281	283	-	2
Capital Invested	\$	55,320,902	52,353,082	+	2,967,820
Employees on salaries-					
Male	No.	1,723	1,810	-	87
Female	No.	624	697	-	73
Total salaries	\$	4,603,754	4,571,812	+	31,942
Employees on wages-					
Male	No.	4,653	4,554	+	99
Female	No.	6,073	6,213	-	140
Total wages	\$	8,162,122	7,962,817	+	199,305
Cost of fuel	\$	650,713	658,856	+	1,857
Cost of electricity	\$	204,761	184,739	+	20,022
Power employed - Units	No.	2,636	2,346	+	290
Capacity	H.P.	23,247	19,854	+	3,393
Cost of materials	\$	27,717,889	28,480,230	-	762,341
Gross value of products	\$	62,492,801	60,404,223	+	2,088,578
Net value of products	\$	34,774,912	31,923,993	+	2,850,919

Production Statistics 1929.

The statistics of production in the biscuit, confectionery, cocoa and chocolate industries for the calendar year 1929 are presented by principal items in Table 3 for the Dominion and for each province separately. The quantity of biscuits manufactured rose from 49,003 tons in 1928 to 54,723 in 1929, whilst the value rose from \$17,791,482 in 1928 to \$18,412,708 in 1929. The total production of confectionery rose from 117,757,077 pounds valued at \$30,921,398 in 1928 to 124,560,295 pounds valued at \$32,093,415 in 1929, an increase of 5.73 per cent in quantity and of 3.79 per cent in value. The average price per pound fell from 26 cents in 1928 to 25.76 cents in 1929, a decrease of 1/10 of one per cent. Ice cream production in confectionery plants totalled 2,609,551 gallons worth \$3,792,247 in dairy plants to 7,149,947 gallons worth \$9,737,020 and in bakeries 37,938 gallons worth \$750,442. The total production of ice cream in Canada in 1929 was, therefore, 9,797,436 gallons of a selling value of \$13,604,709 or an average price of \$1.39 per gallon.

A summary table showing the total and per capita production and consumption of biscuits, confectionery and ice cream from all sources except that made in private homes, hotels, restaurants and boarding houses where it is made for own consumption, is presented below for the calendar years 1927, 1928 and 1929.

Per Capita production of biscuits, confectionery and ice cream for the calendar years 1927, 1928 and 1929.

Articles	1927		1928		1929		
	Quantity	Value \$	Quantity	Value \$	Quantity	Value \$	
Total production-							
Biscuits, plain, etc.	ton	50,813	16,465,732	49,380	17,531,019	55,010	18,526,332
Confectionery	lb.	111,525,857	29,947,638	119,473,312	31,355,172	126,913,568	32,739,425
Ice Cream	gal.	7,466,346	10,301,217	8,515,662	11,620,971	9,797,436	13,604,709
Per Capita Production							
Biscuits, plain, etc.	lb.	10.68	1.73	10.23	1.82	11.23	1.89
Confectionery	lb.	11.72	3.15	12.37	3.25	12.96	3.34
Ice Cream	gal.	.78	1.08	.88	1.20	1.00	1.39
Total and per capita consumption being production plus imports less exports, 1927, 1928, 1929.							
Totals -							
Biscuits, plain, etc.	lb.	104,172,142	16,783,439	100,980,635	17,755,838	112,978,543	18,924,160
Confectionery	lb.	114,606,036	30,476,078	122,131,246	31,699,063	129,822,974	33,086,457
Ice Cream	gal.	7,466,346	10,301,217	8,515,662	11,620,971	9,797,436	13,604,709
Per Capita Consumption							
Biscuits, plain, etc.	lb.	10.94	1.77	10.46	1.84	11.53	1.93
Confectionery	lb.	12.04	3.20	12.64	3.28	13.25	3.38
Ice Cream	gal.	.78	1.03	.88	1.20	1.00	1.39

THE STATE OF TEXAS

County of _____ State of Texas

Know all men by these presents that _____

of the County of _____ State of Texas

do hereby certify that _____

is the true and correct copy of _____

as the same appears from the _____

records of the _____

County of _____ State of Texas

in and to which _____

has been duly recorded _____

and the same is hereby _____

certified to be the true and correct _____

copy of the same as the same _____

appears from the _____

records of the _____

County of _____ State of Texas

in and to which _____

has been duly recorded _____

and the same is hereby _____

certified to be the true and correct _____

copy of the same as the same _____

appears from the _____

records of the _____

County of _____ State of Texas

in and to which _____

has been duly recorded _____

and the same is hereby _____

certified to be the true and correct _____

copy of the same as the same _____

appears from the _____

records of the _____

County of _____ State of Texas

in and to which _____

has been duly recorded _____

and the same is hereby _____

certified to be the true and correct _____

THE BISCUIT, CONFECTIONERY, COCOA AND CHOCOLATE INDUSTRIES IN CANADA, 1929

Production Statistics - Cont'd.

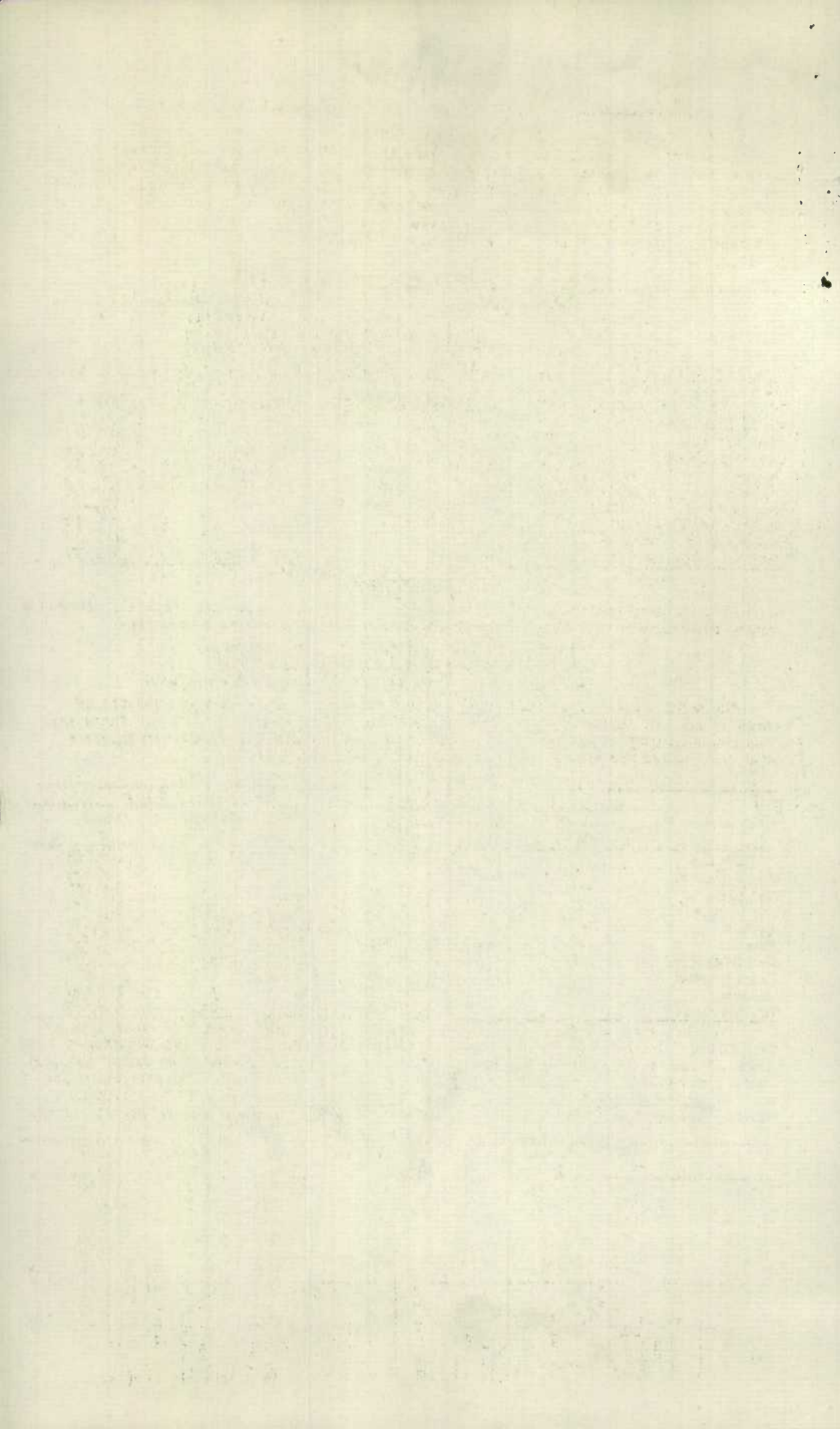
Table 2.- Production by Items for Canada and Provinces, 1929

Items of Production	CANADA		P. E. ISLAND		NOVA SCOTIA		NEW BRUNSWICK		QUEBEC	
	Quantity	Selling Value	Quantity	Selling Value	Quantity	Selling Value	Quantity	Selling Value	Quantity	Selling Value
Bread 1/	lb. 5,003,288	357,098	-	-	5,003,288	357,098	-	-	-	-
Buns 1/	-	-	-	-	-	-	-	-	-	-
Pies, cakes, etc. 1/	-	695,489	-	-	-	165,588	-	-	-	79,639
Puddings	-	18,652	-	-	-	-	-	6,177	-	-
Biscuits, plain and fancy 1/	ton 54,723	18,412,708	-	-	1,317	334,630	2,527	999,192	17,316	4,665,193
Chocolate confectionery 1/	lb. 62,397,327	19,499,126	5,964	4,473	3,587,967	1,754,829	5,528,160	1,171,049	19,901,782	5,791,895
Sugar confectionery 1/	lb. 62,162,968	12,594,209	14,300	3,484	3,605,636	645,561	2,700,175	552,512	14,952,866	2,604,914
Cocoa 1/	lb. 3,122,935	689,205	-	-	-	-	-	-	2,537,975	548,815
Chocolate including coatings	lb. 5,284,932	1,248,193	-	-	-	-	-	-	1,510,894	421,546
Ice cream 1/	gal. 2,609,551	3,792,247	16,280	24,514	212,079	341,566	11,625	16,635	352,302	551,308
Popcorn 1/	lb. 1,483,506	560,571	-	-	-	-	-	-	362,607	96,615
All other products 2/	-	4,625,223	-	-	-	9,497	-	500	-	690,499
Total Value	-	62,492,801	-	32,471	-	3,588,769	-	2,746,065	-	15,450,474

Items of Production	ONTARIO		MANITOBA		SASKATCHEWAN		ALBERTA		BRITISH COLUMBIA	
	Quantity	Selling Value	Quantity	Selling Value	Quantity	Selling Value	Quantity	Selling Value	Quantity	Selling Value
Bread 1/	Lb. -	-	-	-	-	-	-	-	-	-
Buns 1/	-	-	-	-	-	-	-	-	-	-
Pies, cakes, etc. 1/	-	232,982	-	217,230	-	-	-	-	-	-
Puddings 1/	-	12,375	-	100	-	-	-	-	-	-
Biscuits, plain and fancy 1/	ton 26,331	10,018,381	1,900	500,078	-	-	3,548	1,187,540	1,784	707,694
Chocolate confectionery 1/	lb. 30,350,812	9,919,945	1,857,894	419,068	2,000	640	111,926	41,088	1,050,822	416,139
Sugar confectionery 1/	lb. 31,346,144	6,871,637	6,132,079	1,107,777	26,000	5,950	628,935	128,210	2,724,833	674,044
Cocoa 1/	lb. 584,960	140,390	-	-	-	-	-	-	-	-
Chocolate including coatings	lb. 3,774,646	826,647	-	-	-	-	-	-	-	-
Ice cream 1/	gal. 1,474,119	2,093,935	147,018	206,092	-	-	600	1,200	395,528	556,997
Popcorn 1/	-	460,953	-	-	-	-	-	-	19,025	3,003
All other products 2/	-	3,779,952	-	-	-	-	-	1,854	-	142,921
Total Value	-	34,357,397	-	2,450,345	-	6,590	-	1,359,892	-	2,500,798

1/ Data here given do not necessarily represent the total Canadian production of these commodities since they are also produced in other industries

2/ Includes macaroni, mincemeat, cocoa butter, peanut butter, chewing gum, syrups, salted and roasted peanuts.



CAPITAL INVESTMENT

The amount of capital invested in the industry in 1929 is shown by provinces in table 4, under two heads: (1) fixed capital represented by land, buildings, machinery and tools and (2) working capital by stocks, or materials and supplies on hand, finished products on hand, and cash, trading and operating accounts and bills receivable. All of the provinces but Saskatchewan show increases in total investment ranging from \$1,596,110 in Ontario to \$3,334 in Prince Edward Island, the total increase for the Dominion being \$2,967,820.

Table 4.- Capital Investment by Provinces, 1929.

Provinces	No. of plants reporting	Fixed Capital		Working Capital		Total Capital
		Land, buildings, fixtures, machinery & Tools	Materials & supplies on hand, finished products, etc.	Cash trading & operating accts. etc.		
	No.	\$	\$	\$	\$	
Canada	281	32,276,540	9,715,298	13,329,064	55,320,902	
P. E. Island	4	9,214	1,176	720	11,070	
Nova Scotia	11	2,935,097	922,667	826,399	4,684,163	
New Brunswick	8	974,932	521,107	786,315	2,282,354	
Quebec	54	7,378,098	2,256,923	2,480,117	12,115,138	
Ontario	124	18,205,985	4,283,888	8,163,501	31,253,372	
Manitoba	19	1,289,665	543,538	487,969	2,321,172	
Saskatchewan	2	6,500	216	192	6,908	
Alberta	13	765,905	279,029	143,395	1,188,329	
British Columbia	46	711,146	306,784	440,156	1,458,086	

EMPLOYMENT STATISTICS

Statistics of employment in the biscuit, confectionery, cocoa and chocolate industries during the calendar year 1929 are presented in the following series of tables:-

Table 5. Employees by number, sex and remuneration.

Table 6. Employees by months.

Table 7. (a,b,c) Working time of plants and employees.

The total number of persons at employment whether on salary or wage payments is shown by sex and remuneration for the Dominion and the provinces in table 5. There was a decrease in 1929 of 201 in the total number of persons employed whether on salaries or wages, whilst the annual payroll increased by \$231,247.

Table 5.- Employees, Salaries and Wages by Provinces, 1929.

Provinces	Employees on Salaries			Employees on Wages		
	Male No.	Female No.	Salaries \$	Male No.	Female No.	Wages \$
Canada	1,723	624	4,603,754	4,653	6,073	8,162,122
P. E. Island	-	-	-	6	2	4,663
Nova Scotia	144	53	371,648	505	531	739,894
New Brunswick	73	39	190,989	234	338	365,276
Quebec	487	115	993,652	1,523	1,684	1,973,828
Ontario	827	371	2,631,427	2,129	2,967	4,167,297
Manitoba	41	21	112,756	201	220	375,974
Saskatchewan	-	-	-	1	1	1,570
Alberta	68	11	155,396	87	103	165,011
Br. Columbia	83	14	147,912	167	227	368,609

The number of wage earners employed during each month of the year is shown by sex in table 6. The months of highest employment were September, October and November, whilst those of lowest employment were January, February and April. The average number employed monthly was 10,726 of whom 4,653 were males and 6,073 were females. The average employment by months in the tables of this report is the sum of the averages of individual plants based on the months in actual operation and not the average for the calendar year.

Table 6.- Number and Sex of Employees by months, 1929.

Months	Male No.	Female No.	Total No.	Months	Male No.	Female No.	Total No.
January	4,357	5,579	9,936	July	4,783	6,127	10,910
February	4,353	5,695	10,048	August	4,838	6,399	11,237
March	4,418	5,755	10,173	September	4,998	6,725	11,723
April	4,361	5,550	9,911	October	4,985	6,750	11,735
May	4,486	5,616	10,102	November	4,883	6,695	11,579
June	4,600	5,854	10,454	December	4,638	6,059	10,697
Total employment during year					55,760	72,805	128,565
Average monthly employment					4,653	6,073	10,726

The undersigned hereby certifies that the within copy is a true and correct copy of the original as the same appears on the records of the Board of Health of the City of New York.

Mayor

Health Officer

City of New York

Received of the City of New York the sum of \$100.00 for the purpose of the purchase of the land for the establishment of a public health building.

City of New York

Health Officer

City of New York

Working time of plants and employees is presented in tables 7(a), 7(b) and 7(c) for the calendar year 1929 for the provinces and the Dominion. Full time operation of plants in the Dominion was 82.09 per cent of the total possible working time estimated by the Census of Industry at 304 days, part time 7.66 per cent while idle time represented 10.25 per cent. In average full time operation, Prince Edward Island ranked first with 293.00 days per plant, New Brunswick being second with 266.62 days per plant and Nova Scotia third with 261.54 days. In part time operation Saskatchewan was highest with 75 days per plant, British Columbia next with 37.48 days and Alberta third with 33.77 days. Time lost through idleness was highest in Manitoba with 48.84 days per plant followed in order by Ontario with 34.52 days, Alberta with 31.31 days and Quebec and Saskatchewan with 27.24 and 27 days respectively.

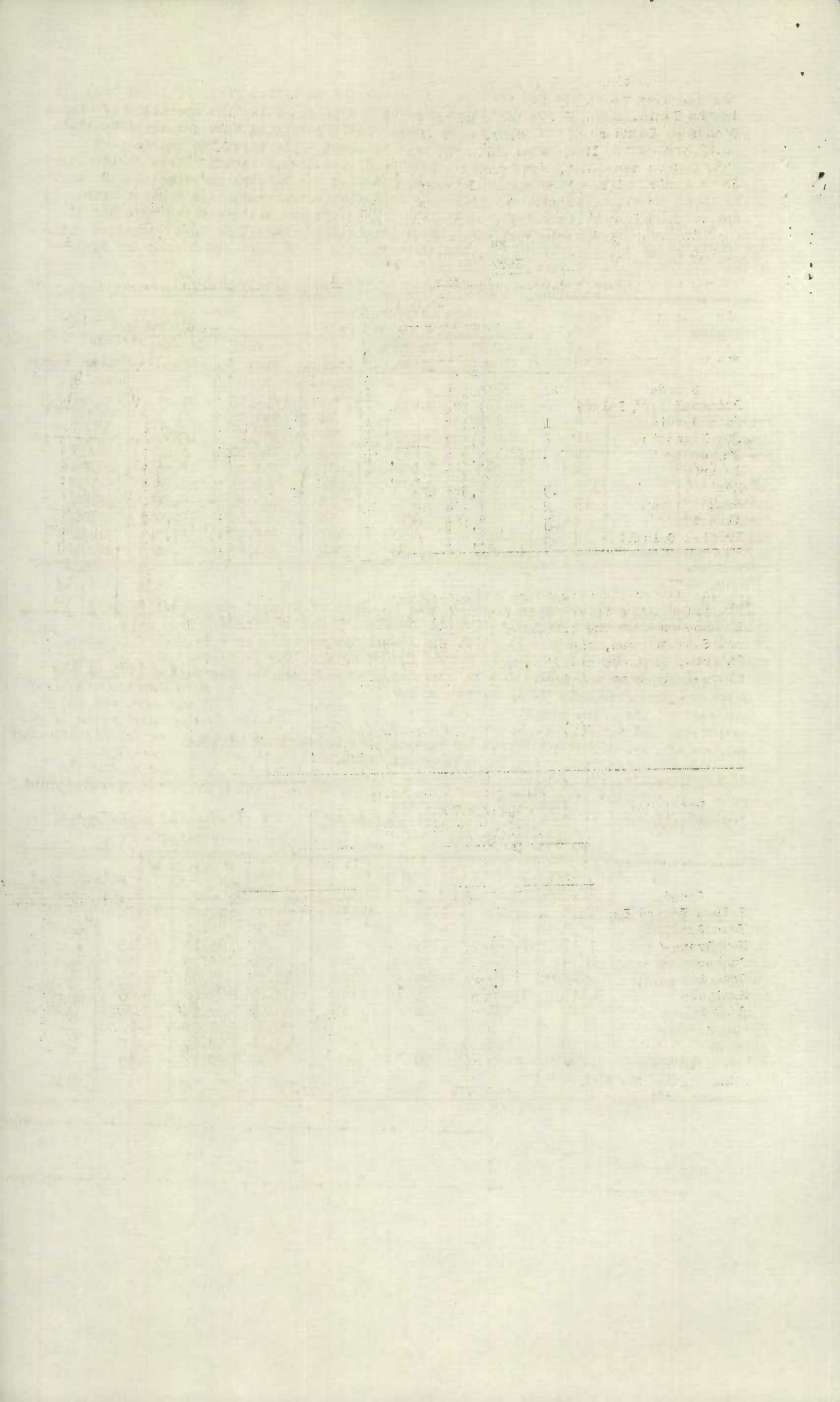
7(a) Working time of plants, 1929 by provinces.

Provinces	Number of Plants	Days in Operation			Average time worked per plant		
		On full time	On part time	Idle	On full time	On part time	Idle
		No.	No.	No.	No.	No.	No.
Canada	281	70,125	6,539	8,759	249.56	23.27	31.17
Prince Edward Island	4	1,172	-	44	293.00	-	11.00
Nova Scotia	11	2,877	183	284	261.54	16.64	25.82
New Brunswick	8	2,133	53	246	266.62	6.63	30.75
Quebec	54	13,943	1,002	1,471	258.20	18.56	27.24
Ontario	124	30,907	2,508	4,281	249.25	20.23	34.52
Manitoba	19	4,368	480	928	229.90	25.26	48.84
Saskatchewan	2	404	150	54	202.00	75.00	27.00
Alberta	13	3,106	430	407	238.92	33.77	31.31
British Columbia	46	11,216	1,724	1,044	243.82	37.48	22.70

The number and percentage of wage-earners in month of highest employment working specified hours is shown in table 7(b) for Canada and the provinces. From this table it appears that the provinces in which the 8 hour day prevails were British Columbia, and Saskatchewan, the 9 hour day in Prince Edward Island, New Brunswick, Nova Scotia, Ontario, Manitoba and Alberta, the 10 hour day in Quebec, whilst New Brunswick showed over 48 per cent working over 10 hours per day.

7(b) Hours worked by wage-earners in month of Highest Employment, 1929.

Provinces	Number of Wage-earners in month of highest employment working per day of -				Percentage of wage-earners working -			
	8 hours or less	9 hours	10 hours	Over 10 hours	8 hours or less	9 hours	10 hours	Over 10 hours
Canada	3,418	6,116	2,145	1,156	26.63	47.65	16.71	9.01
Prince Edward Is.	3	4	-	2	33.33	44.45	-	22.22
Nova Scotia	7	1,041	173	2	.57	85.12	14.15	.16
New Brunswick	4	354	7	346	.56	49.79	.98	48.67
Quebec	648	1,079	1,649	152	18.37	30.58	46.74	4.31
Ontario	2,185	3,023	285	642	35.61	49.28	4.65	10.46
Manitoba	180	331	21	12	33.09	60.84	3.86	2.21
Saskatchewan	1	1	-	-	50.00	50.00	-	-
Alberta	29	188	-	-	13.36	86.64	-	-
British Columbia	361	95	10	-	77.47	20.39	2.14	-



The hours worked per day in month of highest employment and the standard working hours per week are shown by provinces in table 7(c). It should be noted that the statistics relating to hours of labour in columns 1, 2 and 3 are based on figures compiled for the month of highest employment, whilst those in columns 4 and 5 represent the total standard weekly hours of labour for the number of establishments reporting to the Bureau. On this account and because of a considerable number of the smaller confectionery plants working less than 8 hours per day, the relationship between daily and weekly hours of labour computed on the above basis was for the Dominion 9.04 whilst the average weekly hours worked out at 46.66 per plant.

Table 7(c).- Hours of Labour, per day and per week, 1929.

Province	Total hours worked per day and number of wage earners in month of highest employment			Standard working hours per week per plant	
	Total hours	Total Wage-earners	Average hours per day per wage-earners	Total	Average per plant
Canada	115,976	12,835	9.04	13,112	46.66
P. E. Island	81	9	9.00	208	52.00
Nova Scotia	11,176	1,223	9.14	619	56.27
New Brunswick	6,921	711	9.73	450	56.25
Quebec	32,981	3,528	9.35	2,808	52.00
Ontario	54,278	6,135	8.85	5,565	44.88
Manitoba	4,755	544	8.74	852	44.84
Saskatchewan	17	2	8.50	96	48.00
Alberta	1,924	217	8.87	536	41.23
British Columbia	3,843	466	8.25	1,978	43.00

FUEL CONSUMPTION

The quantity and cost value delivered at the factory or works during 1929 of the various classes of fuel used, are presented in table 8. Coal and coke represented 68.04 per cent of the total cost of all fuel, gasoline and fuel oils 6.47 per cent and gas, artificial and natural, 21.99 per cent. Compared with 1928 the average cost price of all classes of fuel except gasoline show variations ranging from 3.39 per ton for lignite coal to .008 cents per gallon for fuel oils. Gas, artificial and natural, increased by 32,856 M cu. ft. but decreased in value by \$1,442. Electricity purchased during the year cost \$285,363 or an average of 1.30 cents per k.w.h., and contributed almost 33 per cent of the total cost of power used.

Table 8.- Fuel Consumption in Canada by Classes, 1929.

Classes of fuel	Units of Measure	Quantity	Cost value at factory or works	Average cost per unit
Bituminous coal, all grades	tons of 2,000 lb.	47,380	\$ 284,461	\$ 6.00
Anthracite coal, all grades	" "	7,457	84,617	11.34
Lignite coal, all grades	" "	868	6,268	7.22
Coke	" "	2,226	19,363	8.71
Gasoline	Imp. gals.	770	214	.278
Fuel oils	" "	460,712	37,363	.081
Wood	Cord	873	5,227	5.99
Gas, artificial and natural	1,000 cu. ft.	209,358	127,606	.61
Electricity purchased for power only	k.w.h.	21,865,449	285,363	.0130
All other fuel (not specified)	-	-	14,992	-
Total cost of fuel and electricity	-	-	865,474	-

Faint text at the top left corner, possibly a header or title, which is mostly illegible due to fading.

A large table with multiple columns and rows, containing very faint data. The table structure is visible but the content is illegible.

Faint text at the bottom of the page, possibly a footer or concluding remarks, which is mostly illegible.

POWER INSTALLATION

The classes of power installed in the industry in 1929 are shown in table 9 by number of units installed and by horsepower according to manufacturer's rating. The horsepower used for manufacturing purposes is found by the addition of items 1, 2, 3 and 4a and totalled 23,247 h.p. of which 20,169 h.p. or 86.7 per cent was of electrical origin. Boilers installed numbered 110 with a boiler h.p. capacity of 9,145.

Table 9.- Power Installation, 1929.

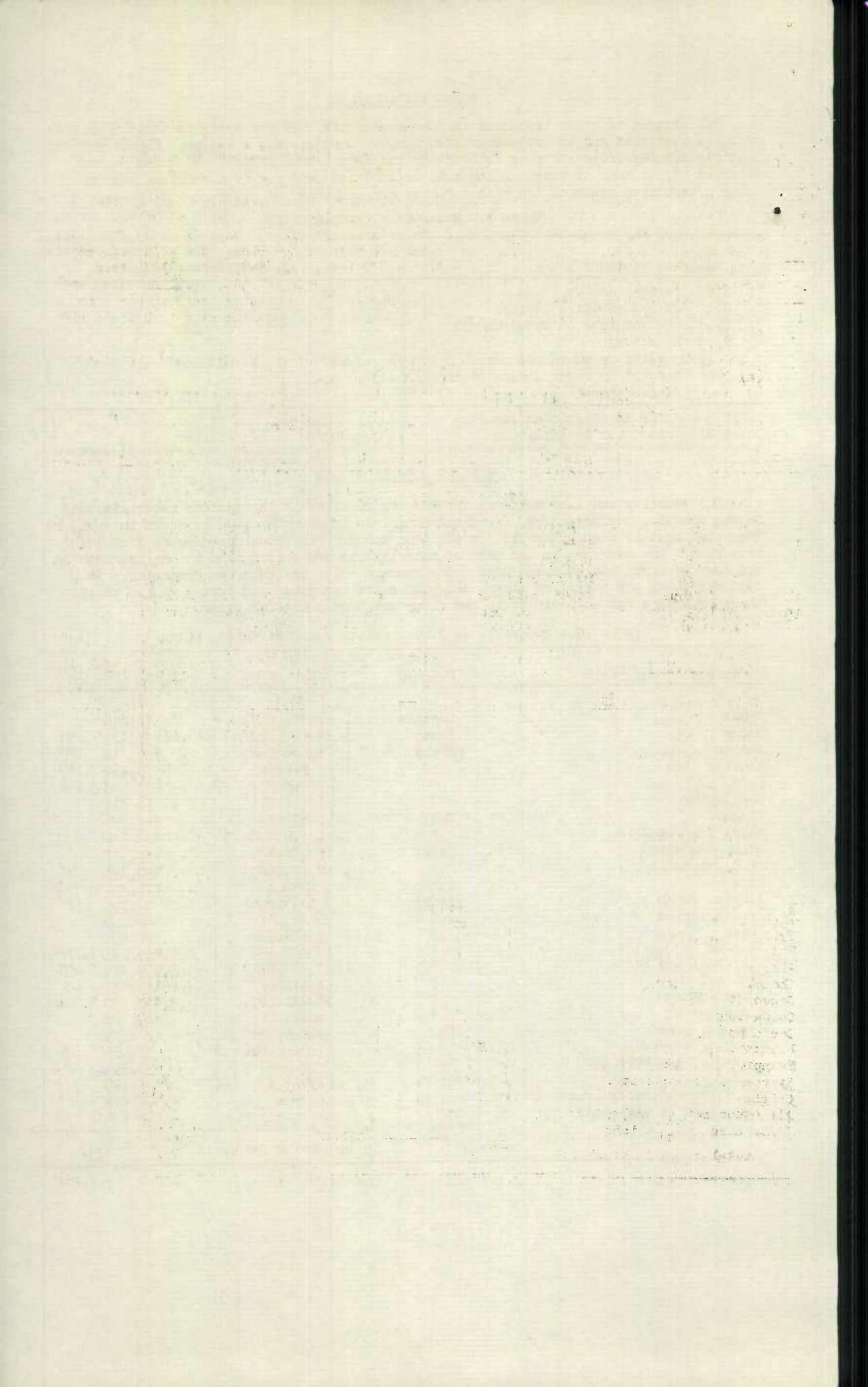
Classes of power	Number of Units	Horsepower according to manufacturer's rating
1. Steam engines and turbines	42	2,770
2. Oil, gas and gasoline engines	2	28
3. Hydraulic turbines or water wheels	2	280
4. Electric motors:-		
(a) Operated by purchased power	2,590	20,169
(b) Operated by power generated by establishment	113	871
Total power for manufacturing purposes	2,636	23,247
Total electric motor installation	2,703	21,040

COST OF MATERIALS USED

The quantity and cost value at the factory or works of the various materials used in the biscuit, confectionery, cocoa and chocolate industry in 1929 is shown in table 10. The total cost of such materials for the year was \$27,717,889 a decrease of \$762,341 from 1928. The decrease in the cost of materials is due principally to the decrease in the cost of flour and of sugar used. The average price of these two commodities in 1928 was \$6.21 per barrel of flour, and 5.82 cents per pound for sugar, whilst in 1929 the prices were respectively \$6.18 for flour and 5.25 cents for sugar.

Table 10.- Materials used by quantity and cost value, 1929.

Classes of materials	Unit of Measure	Quantity	Cost value at the factory
			\$
Flour	Barrels	384,337	2,377,295
Sugar	Pound	89,503,218	4,697,327
Butter	Pound	1,626,869	659,310
Cooking oils	"	542,385	70,862
Lard	"	1,559,357	207,128
Shortening	"	8,166,116	1,114,817
Cream	Gallon	650,274	842,324
Milk, fresh & Skim	"	1,105,106	307,522
Milk, condensed	Pound	5,176,483	485,407
Milk, powdered	"	2,692,683	390,396
Eggs	Dozen	452,642	171,397
Fruits, fresh	Pound	496,248	90,195
Fruits, dried	"	3,259,141	460,556
Nuts	"	3,035,934	910,654
Glucose	"	28,652,398	1,239,191
Chocolate and cocoa	"	7,747,672	1,530,476
Cocoonut	"	1,512,163	181,632
Cocoa beans	"	15,731,163	2,031,532
Cocoa butter	"	6,813,717	1,929,728
Peanuts, green	Lb.	4,846,034	426,329
Peanuts, roasted	"	384,789	39,155
Extracts, essences etc.	-	-	439,794
Chicle	Lb.	1,027,881	565,140
All other materials (value only)	-	-	2,302,846
Containers of all kinds	-	-	4,246,876
Total cost of materials	-	-	27,717,889



THE BISCUIT, CONFECTIONERY, COCOA AND CHOCOLATE INDUSTRIES IN CANADA, 1929.

IMPORTS AND EXPORTS

Table 11 presents the imports for consumption and the exports of Canadian produce for the calendar year 1929 by commodities and countries. Including imports of chicle, cocoa and chocolate, the total value in 1928 of imports was \$6,253,352 while in 1929 the total value was \$5,848,230, being a decrease during the year of \$405,122. The value of Canadian goods exported during the year 1928 was \$1,024,375 as against \$993,668 in 1929 or a decrease of \$30,707. Of the total value of goods imported in 1929, 49.6 per cent came from Britain and her colonies, 23.5 per cent from the United States and 26.9 per cent from other countries, whilst the percentage of Canadian produce exported to Britain and her colonies was approximately 83.3 per cent.

Table 11.- Imports and Exports of Biscuits, Confectionery, Cocoa and Chocolate during the calendar year 1929.

I M P O R T S			I M P O R T S		
Articles by countries	Quantity	Value	Articles by countries	Quantity	Value
Biscuits, not sweetened		\$	Cocoa butter lb.		\$
Lb.	2,280,277	272,475	lb.	5,882,939	1,536,864
United Kingdom	1,340,157	139,743	United Kingdom	449,572	138,556
United States	876,777	121,925	United States	309,145	84,072
Other countries	63,343	10,807	Germany	118,296	33,819
Biscuits, sweetened lb.	1,320,466	221,480	Netherlands	4,967,879	1,271,519
United Kingdom	261,264	85,002	Other Countries	38,047	8,788
United States	977,283	119,925	Cocoa paste of		
Other Countries	81,919	16,553	liquid, not sweetened		
Confectionery, coated with or containing chocolate			lb.	23,006	5,420
lb.	794,067	218,741	United Kingdom	112	28
United Kingdom	174,011	66,206	United States	9,456	1,938
United States	248,890	51,539	Other Countries	13,438	3,454
Netherlands	135,366	32,693	Cocoa paste or liquid		
Other Countries	235,800	68,303	sweetened		
Sugar candy and confectionery of all kinds, n.o.p.			lb.	225,622	51,491
lb.	4,583,655	811,226	United Kingdom	1,008	243
United Kingdom	3,397,476	599,852	United States	157,198	38,104
United States	891,918	162,033	Other Countries	67,416	13,144
Other Countries	294,261	49,341	Cocoa or chocolate		
Chicle or sappato gum, crude			in powdered form		
lb.	1,213,867	544,053	lb.	1,358,910	117,702
United States	819,619	350,092	United Kingdom	37,719	7,057
British Honduras	394,248	193,961	United States	526,575	64,219
Other Countries	-	-	Netherlands	791,820	45,910
Cocoa beans, not roasted or ground cwt.			Other Countries	2,796	516
cwt.	188,539	2,046,514	Cocoa or chocolate		
United Kingdom	14,603	170,796	n.o.p.		
United States	30,961	372,248	lb.	98,954	22,264
British West Africa	45,595	474,551	United Kingdom	19,866	5,891
Jamaica	30,864	285,948	United States	44,885	7,037
Trinidad and Tobago	40,385	450,780	Other Countries	34,203	9,336
Other Br. West Indies	19,530	197,925	Total imports by		
Other Countries	6,601	94,266	Countries (value only)	-	5,848,230
			United Kingdom	-	1,213,384
			United States	-	1,373,132
			Br. Honduras	-	193,961
			British West Africa	-	474,551
			Jamaica	-	285,948
			Trinidad and Tobago	-	450,780
			Netherlands	-	1,350,222
			Other Countries	-	506,252

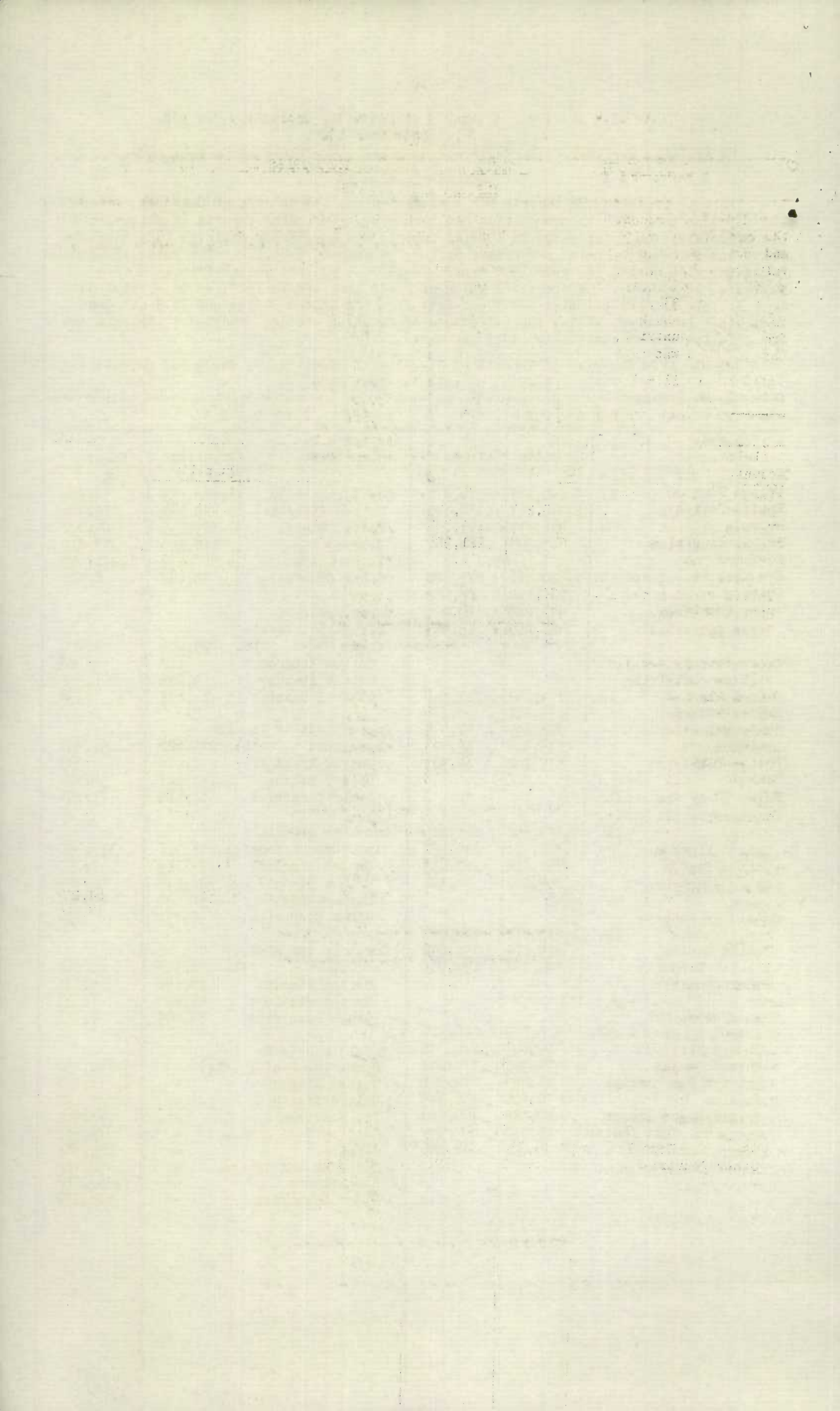


Table 11.- Imports and Exports of Biscuits, Confectionery, etc.
during the calendar year 1929.

E X P O R T S		
Articles by countries	Quantity	Value
		\$
Biscuits & bread cwt.		
United States	6,423	96,127
Bermuda	573	7,869
Br. Guiana	486	6,231
Newfoundland	1,142	17,435
Trinidad and Tobago	954	16,663
Jamaica	457	5,756
Other B. W. Indies	1,352	19,064
Other Countries	695	14,122
Totals	12,281	183,267
Candy Lb.		
United Kingdom	5,532	2,735
United States	1,932	597
Bermuda	41,160	12,831
Br. South Africa	551,049	149,395
Newfoundland	429,164	130,720
New Zealand	602,645	168,557
China	121,988	33,896
Other Countries	184,690	51,655
Totals	1,938,160	550,386
Confectionery, n.o.p. (Value only)		
United Kingdom	-	1,098
United States	-	5,181
Newfoundland	-	67,158
Australia	-	14,629
New Zealand	-	17,653
Bermuda	-	159
Other Countries	-	26,656
Totals	-	132,539
Chewing gum (Value only)		
United Kingdom	-	99,943
Newfoundland	-	19,759
Bermuda	-	6,249
Other Countries	-	1,525
Totals	-	127,476
Total Exports by Countries (Value only)		
United Kingdom	-	103,776
United States	-	101,905
Australia	-	14,629
British Guiana	-	6,231
British South Africa	-	149,395
China	-	33,896
Trinidad and Tobago	-	16,663
Jamaica	-	5,756
Bermuda	-	27,108
Other Br. West Indies	-	19,064
Newfoundland	-	235,072
New Zealand	-	186,215
Other Countries	-	93,958
Total Exports	-	993,668

Firms Manufacturing Biscuits, Confectionery and Ice Cream, 1929.
Including Cocoa & Chocolate
Prince Edward Island.

<u>Name</u>	<u>Address</u>
A. Livingstone	162 Queen St., Charlottetown
Thos. F. White	109 Grafton St., Charlottetown
Annie L. Hunter	Summerside
J. Henry Gaudet	Water St., Summerside

Nova Scotia

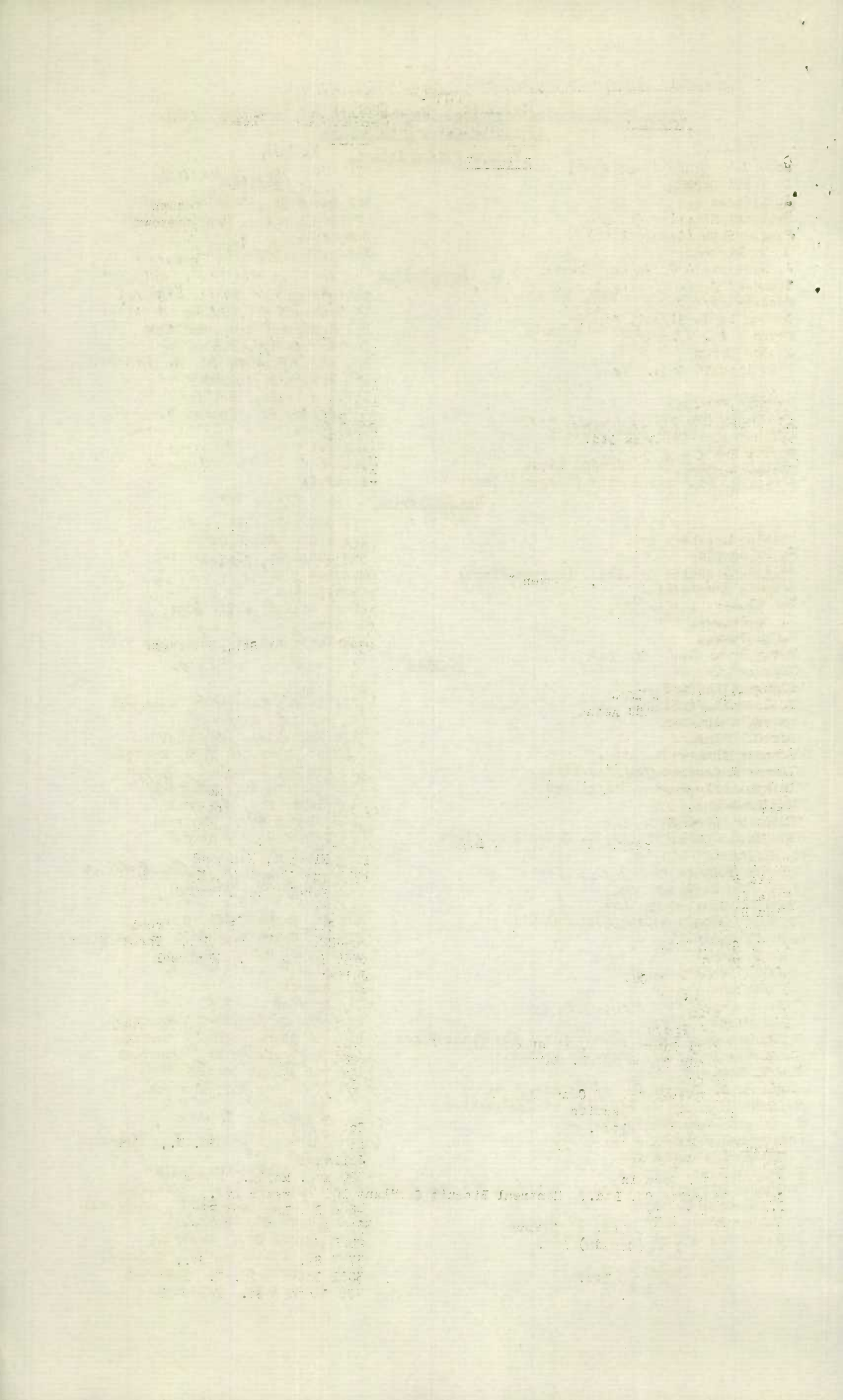
Antigonish Ice Cream Mfg. Co. Ltd.,	Antigonish
Eastern Ice Cream Co. Ltd.,	14 Townsend St., Sydney
Halifax Creamery, Reginald Hart	257 Brunswick Ave., Halifax
G. I. Hamilton & Sons	Commercial St., Pictou
J. M. Horton	Box 327, Yarmouth
P. J. Lynch	164 Prince St., Sydney
Moirs Limited	128 Argyle St., Halifax
W. B. Murphy	935 Prince St., Truro
Geo. H. Yeaton & Sons Ltd.	Hantsport
James Reid	Amherst
Philips Candy Co., Raymond Titus	Hebron
Thos. P. De Wolfe & Sons (Deveau & Carr)	Yarmouth

New Brunswick

Corona Company Ltd.,	277 Union St., St. John
Ganong Brothers Ltd.	Water St., St. Stephen
W. H. Golden	374 Queen St., Fredericton
Canada Biscuits Co. Ltd., (Marven Plant)	Moncton
Legges & Marsosis	Cambellton
T. Rankine & Sons Ltd.	10-14 Mill St., St. John
A. K. Currie	Woodstock
Frank White	239 Wentworth St., St. John

Quebec

Acton Biscuit Co. Ltd.	Acton Vale
Compagnie de Biscuit Aetna	1801 Avenue Delormier, Montreal
L. H. Belanger	591 rue Ash, Montreal
J. C. Belanger	3920 Hochelaga, Montreal
Confectioners Co. Ltd.,	2052 St. Lawrence Blvd, Montreal
Bonbons Candiac (Canada) Ltee.	128 rue St. Dominique, Quebec
Biscuiterie Jeanne D'Arc Ltee.	1380 Gilford St., Montreal
Phileas Bussiere	7148 Boyer St., Montreal
Geo. P. Crethan	1108 Clarke St., Montreal
Federal Confectionery, A. Cohen & L. Light	524 Duluth St., Montreal
Charbonneau Limitee	1800 Nicolet, Montreal
David & Frere	1930 rue Champlain, Montreal
Ella Dells Candy	4061 Ethel St., Montreal
Viau Biscuit Corp. Ltd.	Joliette
Robert Gibson & Sons (Canada) Ltd.	442 St. Gabriel St., Montreal
J. N. Godin Ltd.	224-226 Notre Dame St., Three Rivers
L. G. Hamel	6756 Blvd. Monk. Montreal
Joliette Biscuit Co.	Joliette
Ovila Lachapelle	St. Esprit
J. A. Laurin	St. Therese
Lalumiere & Frere	2229 St. Catharine E., Montreal
Laura Secord Candy Shops, Plant 869 Place Wiger	H.O. 60 Bathurst St., Toronto
Laurier Candy Co. Mrs. N. Ratner	1289 Maisonneuve St., Montreal
Frs. Leclerc	163 rue Arago, Quebec
Walter M. Lowney Co. of Canada, Ltd.	350 Inspector St., Montreal
La Manufacture de Biscuits et Confiseries de Scott Ltee.	Scott Junction
Molasses Orispetts Co. Ltd.,	157 Lagachetiere St. W., Montreal
Elzear Martell & Cie	Joliette
Masson & St. Germain	720 Ave. Morin, Montreal
Canada Biscuits Co. Ltd., Montreal Biscuit Co. Plant	100 Brewster Ave., Montreal
O'Pee-Chee-Co. Ltd.	4866 St. Lawrence Plvd., Montreal
Walter Baker & Co. Ltd. of Canada	3510 Albert St., Montreal
J. S. Fry & Sons (Canada) Ltd.	2025 Masson St., Montreal
H. Dufresne Co. Ltd.	5777 St. Dominique St., Montreal
W. J. Boyd Chocolate Ltd.	3081 Ontario St. E. Montreal
S. A. Allen Co. Ltd.	776 Chatham St. Montreal



Firms Manufacturing Biscuits, Confectionery & Ice Cream, 1929 -

Including Cocoa & Chocolate

Quebec - Cont'd.

<u>Name</u>	<u>Address</u>
Home Made Candy Store Reg'd.	1327 Mont Royal, Montreal
C. Henri Gagnon	21 Cote Labodie, Levis
Jule Caron	Cap St. Ignace
National Licorice Co. Ltd.	4211 Rouen St., Montreal
Page & Shaw (Canada Ltd.)	3187 St. James St., Montreal
G. N. Pichet	4028 Ontario East., Montreal
J. Maniatis & J. Mechas, Regina Candy Co.	6523 St. Lawrence Blvd. Montreal
Standard Confectionery Co. J. B. Jodoin	1351 Notre Dame Est., Montreal
Sacharon Bros.	5364 St. Lawrence Blvd. Montreal
Compagnie de Biscuit Stuart	255 Laurier Ouest, Montreal
Pepin & St. Germain	4058 Parthenias, Montreal
Nacjeb Thoun	1339 St. Catharine St. E. Montreal
Viau Biscuit Corp. Ltee.	4951 Est Ontario, Montreal
Delphis Verdun	230 rue St. Helene, Quebec
The Goudy Gum Co. of Canada, Ltd.	1910 St. Antoine St. Montreal
Vaillancourt Limitee	1691 Dorion St. Montreal
Purity Ice Cream Co. Ltd.	1076 Mountain St. Montreal
Elzear Routhier	Mistasini
T. Labbe	Thetford Mines, Que.

Ontario

Abdallah, Alex.	London
W. R. Alchin	26 Simcoe St., Oshawa
Adolph B. Amis	53 Queen St., S. Kitchener
Artemis Sweets Ltd.	156 Colborne St., Brantford
Geo. Baker	164 King St., East, Hamilton
H. B. Balmer	22 Geary Ave., Toronto
W. L. Beaton	1097 Wellington St., Ottawa
Betty Brown Candy Co. Ltd.	624 King St., W. Toronto
Bighams Limited	Ingersoll
Bigham's Limited	146 Yonge St., Toronto
C. J. Bodley Ltd.	99 Ontario St., Toronto
Boomer's Limited	181 Dundas St., London
Bunnell Bros.	294 Lisgar St., Ottawa
Burgers Limited	92 Yonge St., Toronto
Cairns Creameries Ltd.	535 Simcoe St., Niagara Falls
Candyland Company	116 Wyndham St., Guelph
Wm. P. Georges	82 King St., Chatham
Christie Brown & Co. Ltd.	202 King St., E. Toronto
The Coates Candy Co.	Collingwood
W. H. Cross	107 St. Catharine St., W. Hamilton
Crone's Coating Co. of Canada	100 Sterling Rd. Toronto
W. J. Crothers Co. Ltd.	209 Wellington St., Kingston
Chas. A. Cunningham	56 Bay St., Kingston
Dainty Confections Ltd.	107 Atlantic Ave. Toronto
Hymen Danziger	123 Dennison Ave., Toronto
George Danos	475 Dundas St., Woodstock
Harry F. Delion Ltd.	Preston
A. Denison	1514 Dundas W. Toronto
Chas. Hopkins, Devonshire Mfg. Co.	159 Kindall Ave., Toronto
Diana Sweets Ltd.	33 Britain St., Toronto
E. F. Dickens & Son	215 Front St., Belleville
C. H. Doerr Co. Ltd.,	128 West Weber St., Kitchener
The T. Eaton Co. Ltd.,	190 Yonge St., Toronto
Fenny J. W. Candy Co.	369 Soreuren Ave. Toronto
F. Emid	130 Queen St. E. Toronto
O. S. Griesback Confectionery	Collingwood
Imperial Biscuit Co.	Wilson St. Guelph
David Craig Jameison	106 S. Christina St., Sarnia
W. F. Jameson	74 Main St., Galt
Horncastle Bros.	209 King St. E. Hamilton
C. A. Buckberrough	705 Bruce Ave., Windsor
T. J. Marsh	65 Campbell Ave., Windsor
Masson Botorie	442 Spadina Ave. Toronto

Original Articles

1. The Effect of the Diet on the Blood Sugar in Normal and Diabetic Subjects
2. The Effect of the Diet on the Blood Sugar in Normal and Diabetic Subjects
3. The Effect of the Diet on the Blood Sugar in Normal and Diabetic Subjects

4. The Effect of the Diet on the Blood Sugar in Normal and Diabetic Subjects
5. The Effect of the Diet on the Blood Sugar in Normal and Diabetic Subjects
6. The Effect of the Diet on the Blood Sugar in Normal and Diabetic Subjects

7. The Effect of the Diet on the Blood Sugar in Normal and Diabetic Subjects
8. The Effect of the Diet on the Blood Sugar in Normal and Diabetic Subjects
9. The Effect of the Diet on the Blood Sugar in Normal and Diabetic Subjects

10. The Effect of the Diet on the Blood Sugar in Normal and Diabetic Subjects
11. The Effect of the Diet on the Blood Sugar in Normal and Diabetic Subjects
12. The Effect of the Diet on the Blood Sugar in Normal and Diabetic Subjects

13. The Effect of the Diet on the Blood Sugar in Normal and Diabetic Subjects
14. The Effect of the Diet on the Blood Sugar in Normal and Diabetic Subjects
15. The Effect of the Diet on the Blood Sugar in Normal and Diabetic Subjects

16. The Effect of the Diet on the Blood Sugar in Normal and Diabetic Subjects
17. The Effect of the Diet on the Blood Sugar in Normal and Diabetic Subjects
18. The Effect of the Diet on the Blood Sugar in Normal and Diabetic Subjects

19. The Effect of the Diet on the Blood Sugar in Normal and Diabetic Subjects

Firms Manufacturing Biscuits, Confectionery & Ice Cream, 1929
Including Cocoa & Chocolate
Ontario - Cont'd.

<u>Name</u>	<u>Address</u>
W. Simpson	Ridgetown
Geo. Economy	Kenora
S. D. Eplett & Sons	Lake Shore Rd., New Liskeard
S. Evison	1750 St. Clair Ave., W. Toronto
S. Gallo	Fort Frances
Michael Georges	20 Kent St., Lindsay
G. H. Foster	1595 Dundas St. W. Toronto
Geo. P. Gattas	44 Norfolk St., Simcoe
T. D. Grant Limited	107 Wyndham, Guelph
C. Grierson	313 Ottawa St., N. Hamilton
George Heller	156 King St., Chatham
The Harry Hook Co.	50 Rosetown Ave. Toronto
Hunts Limited	62 Alcorn Ave., Toronto
Kerr Bros. Limited	54 Wolsely St., Toronto
Mrs. Edith King	377 Dundas St. Woodstock
Laing & Sons, Ltd.	169 King William St., Hamilton
Chas. Lauder Co. Ltd.	97 Ontario St., Toronto
Laura Secord Candy Shops	60 Bathurst St., Toronto
J. T. Legault	4 Bridge St., Belleville
F. F. Long	Campbellford
William E. Lyons	Newmarket
M. Lyriotakis Royal Candy Store	122 King St., Brockville
Canada Biscuit Co. Ltd., McCormick Plant	Dundas St., London
Thos. Manjuris (Paris Candy Works)	1306 Bloor St. W. Toronto
N. G. Donkas, Marathon Candy Kitchen	331 George St., Peterboro
R. J. Watson & R. G. Watson	363 Sorabren Ave., Toronto
Geo. Masoud	238 Princess St., Kingston
J. X. Mays	216 King W., Chatham
Hemlin-Metcalf Ltd.	Weber St., Kitchener
Life Savers Ltd.	Prescott
Peter Moores	260 Front St., Belleville
James Moskos	Arnprior
J. M. Moffatt	260 Ottawa St., Hamilton
William Neilson Limited	277 Gladstone, Toronto
Mrs. W. Northey	Fenelon Falls
Tozias, Chris.	106 Kent St., Lindsay
Palmer's	186 Dundas St., London
N. E. Palmer	61 Main St., Galt
George Panaritis	9 Prospect Ave. Cobalt
William Patterson Ltd.	Brantford
The Patterson Candy Co. Ltd.	951 Queen St. W. Toronto
Ryan Bros.	769 Dovercourt Rd., Toronto
Canada Biscuit Co. Ltd.,	London
Peterson Bros.	Almonte
Pope Bros.	Picton
J. W. Pringley	Front St., Strathroy
Purity Popcorn Co. (H. C. Crocker)	148 Ossington Ave., Toronto
H. G. Rankin	81 Ontario St., Stratford
H. McArdle	54 King St., W. Hamilton
W. S. Hazlitt	362 Bathurst St., Toronto
Rowntree Co. Ltd.	72 Sterling Rd., Toronto
M. Loeb Limited	429 Sussex St., Ottawa
Roy Candy Co. (Roynance Vince)	38 Sydenham St., Toronto
Toronto Creamy Toffee Co.	859 Lansdowne Ave. Toronto
Sanders & Holcombe	389 Talbot St., St. Thomas

1874

IN THE MATTER OF THE ESTATE OF
JAMES M. SMITH, DECEASED

JAMES M. SMITH, DECEASED

BY _____

ADMINISTRATOR

IN SENATE CHAMBERS

JANUARY 15, 1874

NEW YORK

CLERK OF THE SENATE

Firms Manufacturing Biscuits, Confectionery & Ice Cream, 1929

Including Cocoa & Chocolate

Ontario - Cont'd.

<u>Name</u>	<u>Address</u>
A. K. Roberts	50 Market St., Brantford
Robertson Bros. Ltd.	103 Queen St. E. Toronto
F. J. Sabine, (Queen Candy Works)	5 Fenning St., Toronto
J. H. Schnieder	Brampton
Minnie E. Sedley	58 Wyandotte, Walkerville
Clay Campbell & J. Janetos	Wallaceburg
Booth Bros.	Sudbury
W. P. Tickell	Port Hope
Christie Brown & Co. Ltd.	139 Sterling Rd., Toronto
Jno. W. Thomas	70 Erie St., Brantford
Kalma Schiff	176 Elm St., Toronto
J. R. Townley	517 St. Clair Ave., Toronto
Vair & Blackwell	323 Talbot St., St. Thomas
Victoria Candy Kitchen	
W. & N. Batcules	165 St. Paul Street, St. Catharines
J. J. Ward	1046 Gerrard St., Toronto
R. Watson Co.	363 Soraureen Ave., Toronto
William T. Westgate	215 Sandwich St., Ford
George Weston Ltd.	134 Peter St., Toronto
Williard's Chocolate Ltd.	443 Wellington W., Toronto
D. P. Wipper	207 St. Paul St., St. Catharines
James Wood	281 Roncesvalles, Toronto
H. B. Wright Co.	Brockville
Chas. Yates & Co. Ltd.	8 Paisley St., Guelph
Beech-Nut Co. of Canada Ltd.	Corner Cumberland, Hamilton
Canadian Chewing Gum Co. Ltd.	405 Logan Ave., Toronto
O-Pee-Chee Co. Ltd.	420 Adelaide St., London
William Wrigley Jr. Co. Ltd.	235 Carlaw Ave., Toronto &
J. & J. Walker	Brockville

Manitoba

Wm. Bertrand & Co.	918 Rosser Ave., Brandon
Bond & Ronald Ltd.	701 Wellington St., Winnipeg
W. J. Boyd Co. Ltd.	Portage Ave. & Spence St., Winnipeg
H. W. Chislett	491 Jubilee Ave., Winnipeg
Chocolate Shop	268 Portage Ave., Winnipeg
City Candy Kitchen, Ed. Haller	Dauphin
J. Emma	455 Portage Ave., Winnipeg
L. Galpern	Traders Bldg., Winnipeg
Geo. W. Jones	273 Huntleigh St., Winnipeg
Mitrou Candy Co.	836 Rosser Ave., Brandon
A. L. Moran Co. Ltd.,	561 Portage Ave., Winnipeg
Canada Biscuit Co. Ltd., (Paulin Chambers Plant)	311 Rose Ave. & 143 Portage Ave. E. Winnipeg
Picardy Candy Ltd.	690 McGee St., Winnipeg
Purity Ice Cream Co. Ltd.	234 Pritchard Ave. Winnipeg
Samuel Shore	243 Jarvis Ave. Winnipeg
P. Simonot	254 Main St., Winnipeg
Andrew Vlassie	124 Osborne St., Winnipeg
Ernest Barter	564 Arlington St., Winnipeg
W. W. Shaw Co. Ltd.	545 Logan Ave. Winnipeg

Saskatchewan

Oscar Faille	630 Broadway, Saskatoon
Home Candy Works	Hamilton, St., Regina

1875

1875

1875

Firms Manufacturing Biscuits, Confectionery & Ice Cream, 1929

Including Cocoa & Chocolate

Alberta

<u>Name</u>	<u>Address</u>
Bridgeman James	1217 - 1st St., West, Calgary
A. J. Campbell	14th St. W., Calgary
P. Griffin, John Fee & A. Zarkas	140 - 8th Ave. E. Calgary
Canada Biscuit Co. Ltd.	83rd St., & 11th Ave. Edmonton
Mrs. S. H. Oliver	1005A First St., West, Calgary
Nick Spirow	333-5th St. South, Lethbridge
Pavey Candy Co.	9939 - 9945 Jasper Ave., Edmonton
Pinckney's Limited	10444 Whyte Ave. Edmonton
Plunkett & Savage	224 - 9th Ave. West, Calgary
Rochons Ltd.	122A -8th Ave. W. Calgary
The Taberta Candy Co. Ltd.,	Medicine Hat
Independent Biscuit Co. Ltd.	Cor. 11th & 4th Sts. E. Calgary
W. H. Lively	Wetaskiwin

British Columbia

Charles Eyre	1927 - 2nd Ave. West, Vancouver
F. J. H. Baines	1409 Douglas St., Victoria
Borland Ice Cream Co. Ltd.	1520 - 6th Ave. W., Vancouver
C. A. Chatterton	3047 Granville St., Vancouver
Hedley Craven Trading & Craven Candy Co.	507 George Rd., Victoria
P. Maffeo & M. Galasso	24 Prideaux St., Nanaimo
E. Enad	317 - 3rd Ave., Box 729, Prince Rupert
Empress Candy Co. N. Tselentis	Vancouver
Leigh & Cuthbertson	1006 Pender St. E. Vancouver
W. H. Harris & Son	5704 Victoria Rd., S. Vancouver
Kelly Confection Co. Ltd.	1106 Mainland St., Vancouver
Peter Karas Liberty Candy Kitchen	652 Yates St., Victoria
Korn Confectionery	763 Broadway, Vancouver
Henrietta McKenzie	33 Victoria Crescent, Nanaimo
Horace Manning	McKenzie Ave., Revelstoke
National Biscuit & Confectionery Ltd.	1706 First Ave., W. Vancouver
Thos. S. Mayson	1037 Granville St., Vancouver
Ormonds, Ltd.	Main & Russell Sts., Victoria
Port O'Van Ice Cream Ltd.	1170 Hornby St., Vancouver
Dominion Biscuit Co. Ltd.	990-999 Powell St., Vancouver
Rochon's B. C. Ltd.,	685 Alpha St., Victoria
Rogers Chocolates	913 Government St., Victoria
George Pappas	654 Columbia St., New Westminster
Robert Sapp	767 Granville St., Vancouver
Irving, Fred.	568 Broadway, Vancouver
Sinclair Bros.	310 Cordova St., Vancouver
Garret Smith	1237 Rudlin St., Victoria
H. S. Stevenson	725 Yates St., Victoria
L. H. & S. E. Turner	207 Kingsway, Vancouver
J. C. Watkins Frisco Candy Co. Ltd.	716 Davie St., Vancouver
Whites Ltd.	Qualicum Beach
Ernest Wiper	726 1/2 Yates St., Victoria
A. Worsley	Vancouver
Wanda Ziegler	977 Granville, Vancouver
Pauline Johnson Candy Shop	Vancouver
Mrs. Levonie Weedon	1032 Robson St., Vancouver
The Dot Candy Co. Ltd.	1729 Albert St., Vancouver
Henrietta Owen	708 Robson St., Vancouver
Hazelwood Creamery Ltd.	351 Keefer St., Vancouver
R. C. Purdy Ltd.,	675 Granville St., Vancouver
K. G. McKillop	2060 Trafalgar, Vancouver
W. H. Hutter	835 Commercial, Vancouver
Welch's Ltd.	814 Robson St., Vancouver
Mrs. M. Payne	2641 - 4th Ave. W. Vancouver
C. T. Remmer	1080 Hamilton St., Vancouver
Aaron Wolfe	Fernie

STATISTICS CANADA LIBRARY
BIBLIOTHÈQUE STATISTIQUE CANADA



1010712140